



COURISTAN®

January-April
2022

Couri-er

IMPALA

BRAND: Creations™, **PILE:** 70% Heat-Set Courtron™ Polypropylene and 30% Shrink Polyester

WEAVE: Face-To-Face Woven Wilton High/Low Cut-Pile, **WIDTH:** 13'2" (4 Meters)

Available in: Dark Grey (shown), Dark Blue, Light Grey, Light Blue and Beige





OUTDOOR/INDOOR BROADLOOM

CREATIONS™ BRAND INTRODUCTIONS

CEDAR ISLAND



CBCI/0004 Aqua



CBCI/0001 Sand



CBCI/0002 Black



CBCI/0003 Blue



CBCI/0005 Grey



CBCI/0006 Coral



CBCI/0007 Beige

BRAND: Creations™, **PILE:** 100% Courtron™ Polypropylene
WEAVE: Hand-Loomed Flatweave, **WIDTH:** 16'4" (5 Meters)

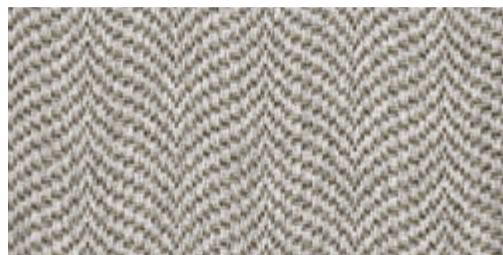
Available in: Sand, Black, Blue, Aqua (shown),
Grey, Coral and Beige



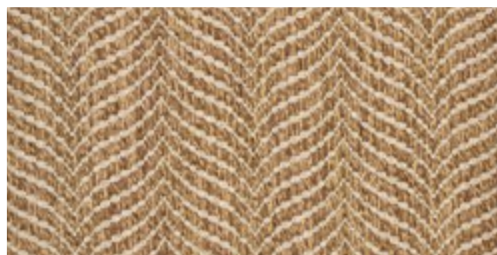
CBSB/0001 Dune



CBSB/0002 Cobblestone



CBSB/0003 Pewter



CBSB/0004 Bronze

BRAND: Creations™, **PILE:** 100% Courtron™ Polypropylene
WEAVE: Structured Flatwoven, **WIDTH:** 13'2" (4 Meters)

Available in: Dune, Cobblestone, Pewter,
Bronze and Frost (shown)

ST. BARTS



CBSB/0005 Frost



SIENA COLLECTION

NEW INTRODUCTIONS

85% Viscose and 15% Shrink Acrylic, Hand-Washed for a Soft, Luxurious Finish, Featuring Two Million Points of Yarn Per Square Meter, Modern-Transitional Designs Enhanced with Multi-Dimensional Hues in Engaging Natural and Vibrant Colors, Designed to add Visual Drama to Bedrooms, Living Rooms and Family Rooms

Pile Height: .314" | Power-Loomed in Turkey | *Available in 6 Area Rugs*

SIZES : 5'3" x 7'2", 6'6" x 9'6", 7'10" x 10'5", 10'5" x 15'8" and a 2'7" x 7'2" Runner
with fringe



3223/0506 - Serpentine/Steel-Ivory



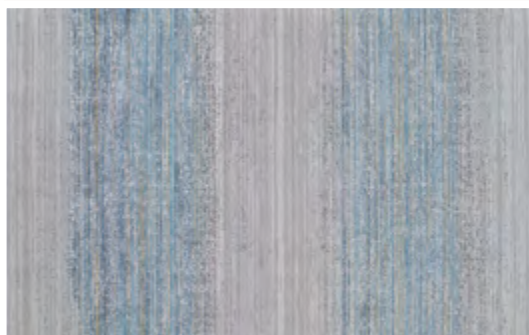
3225/0497 - Grandeur/Gold



3226/0507 - Inverno/Grey-Ivory



3227/0497 - Ombré/Multi-Ivory

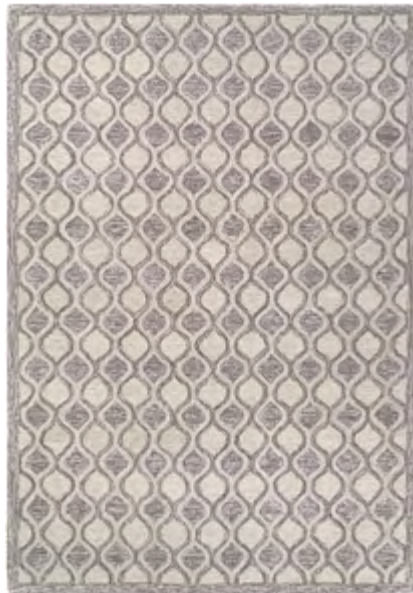
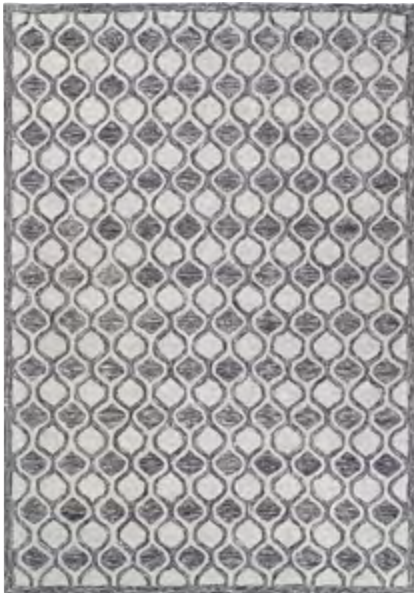
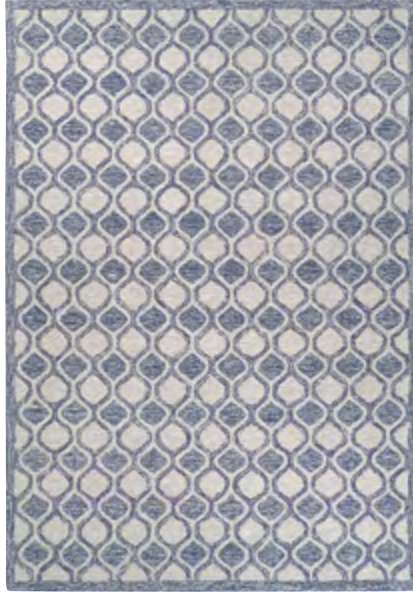


3227/0579 - Ombré/Blue-Gold-Ivory



3228/0430 - Tessera/Blue-Gold-Steel (Shown)

NEW AREA RUG INTRODUCTIONS



SILVERTHORNE COLLECTION

100% PURE WOOL

HAND-TUFTED LOOP PILE

FEATURING A CASUAL OGEE PATTERN ENHANCED IN
A PALETTE OF STRONG PRIMARY COLORS

PERFECT FOR CASUAL DENS, FAMILY ROOMS AND BEDROOMS

PILE HEIGHT: .314" | HAND-CRAFTED IN INDIA

Available in 4 Area Rugs

SIZES | 5' x 8', 6' x 9', 8' x 10', 9' x 12'



DOLCE COLLECTION

100% FIBER-ENHANCED COURTRON™ POLYPROPYLENE WITH DURABLE
POLYESTER, FEATURING A STRUCTURED TAPESTRY CONSTRUCTION
SUITABLE FOR OUTDOOR/INDOOR USE
UV STABILIZED, MOLD/MILDEW/WATER RESISTANT



ASPEN COLLECTION

100% PURE WOOL

FEATURING A HAND-LOOMED LOOP PILE

TEXTURED LINEAR STRIPED PATTERN
IN A SOOTHING PALETTE OF
TRANSITIONAL COLORS

PILE HEIGHT: .314"

HAND-LOOMED IN INDIA

Available in 4 Area Rugs

SIZES | 5'x 8', 6'x 9', 8'x 10', 9'x 12'



MARINA COLLECTION

100% HEAT-SET COURTRON™ POLYPROPYLENE, FACE-TO-FACE WILTON WOVEN
DESIGNS ARE CREATED USING A DROP STITCH AND DOUBLE POINT WEAVING TECHNIQUE
SOFT, LUXURIOUS FINISH IN EXCESS OF A MILLION POINTS OF YARN PER SQUARE METER
PILE HEIGHT: .393" | POWER-LOOMED IN BELGIUM | *Available in 21 Area Rugs*

SIZES | 2' x 3'11", 3'11" x 5'6", 5'3" x 7'6", 6'6" x 9'6", 7'10" x 10'9",
9'2" x 12'9", 2'2" x 7'10" Runner



OLD WORLD CLASSICS COLLECTION

SEMI-WORSTED NEW ZEALAND WOOL, FACE-TO-FACE WILTON WOVEN,
LOCKED-IN-WEAVE AND CRYSTAL-POINT FINISH, REPLICAS OF ANCIENT HISTORIC PATTERNS,
RICH COLOR SPECTRUM IN RUSTIC HUES
PILE HEIGHT: .28" | POWER-LOOMED IN BELGIUM | *Available in 11 Area Rugs*

SIZES | 4'6" x 6'6", 5'3" x 7'6", 6'6" x 9'10", 7'10" x 11'2",
9'10" x 13'9", 2'2" x 8'11" Runner



PILE HEIGHT: NO PILE (FLAT WEAVE)
POWER-LOOMED IN BELGIUM

Available in 24 Area Rugs

SIZES | 2'3" x 3'11", 4' x 5'10", 5'3" x 7'6", 8'1" x 11'2",
2'3" x 7'10" Runner

NEW BROADLOOM INTRODUCTIONS

WELLINGTON



BRAND:
Creations™

Available in:
Light Grey, Navy Blue,
Fawn, Light Beige,
Mint Green (shown)
and Desert



PILE	100% PET
WEAVE	Hand-Loomed Flatweave
WIDTH	15'

NOTE

RESIDENTIAL BROADLOOM

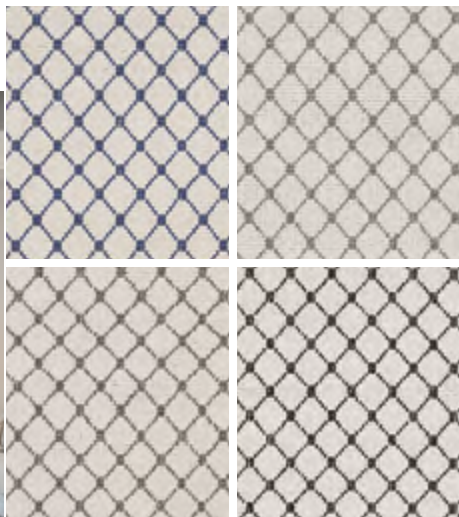
These products can be fabricated into a Custom Size Rug.

Finishing options include the following bindings: Chenille, Cotton Fabric, Linen and Courtron™ Polypropylene, 3/8" Synthetic Binding (For Outdoor/Indoor Usage). Programmed Borders, Wool and Synthetic Serging and 2" Length Wool Fringe are also available.

Applied Backing Options Include:
Outdoor Living, Non-Skid and Felt (*Standard*)

Contact your Couristan Territory Manager today in regard to our Custom Rug Online Calculator, Boards and Program.

BELMARRA



BRAND	Premiere
PILE	100% Pure Wool
WEAVE	Hand-Loomed Loop Pile
WIDTH	15'

Available in: Indigo (shown), Granite, Coal and Onyx



NEWTOWN SQUARE

BRAND	Premiere
PILE	100% Pure Wool
WEAVE	Hand-Loomed Cut and Loop Pile
WIDTH	15'

Available in: Taupe, Beige, Grey, Ivory and Blue (shown)



MANHATTAN BEACH

BRAND	Premiere
PILE	100% Pure Wool
WEAVE	Hand-Loomed Cut and Loop Pile
WIDTH	15'

Available in: Anthracite, Multi, Navy (shown), Teal and Sandstone



HEAVENLY II

Available in: Bone, Pink, Lilac, Sterling, Platinum, Moss, Teal, Powder Blue (shown) and Navy

BRAND	Creations™
PILE	100% Nylon
CONSTRUCTION	Tufted Cut-Pile
WIDTH	13'2" (4 Meters)



NEW MERCHANDISING DISPLAYS



CREATIONS™ TWO-TIER OUTDOOR/INDOOR DISPLAY UNIT

DISPLAY: (48) – 13.5" x 18" PRODUCT BOARDS
(2) – OUTDOOR CUSTOM RUG BOARDS
DIMENSIONS: 66.5" H x 52.5" W x 21" D

CONTACT YOUR TERRITORY MANAGER
FOR MORE INFORMATION



SIGNATURE AREA RUG COLLECTIONS DISPLAY UNIT

DISPLAY: (40) – 18" x 18" SAMPLE SWATCHES
DIMENSIONS: 77" H x 47" W x 27" D

CONTACT YOUR TERRITORY MANAGER
FOR MORE INFORMATION

