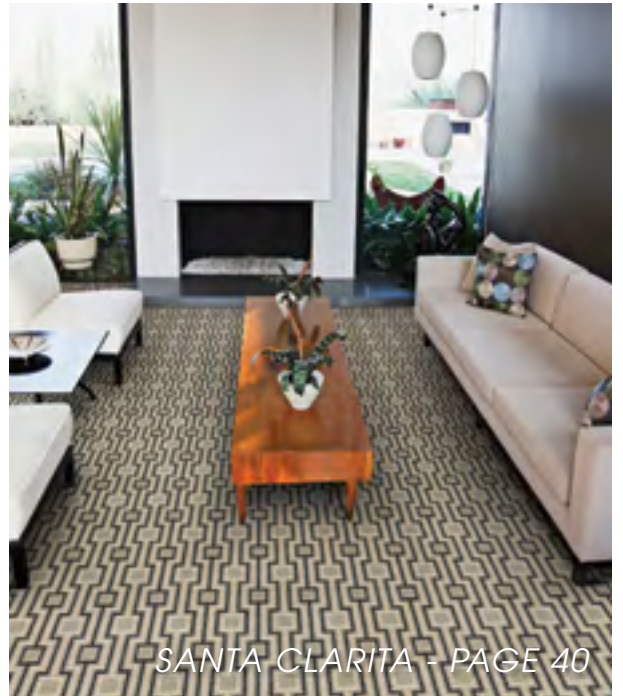


2021 - 2022

# BROADLOOM SPECIAL BUYS

PREMIERE  
CREATIONS™  
PURITY®





# BROADLOOM SPECIAL BUYS

---

PREMIERE	11	MATRIX	22	TROPICAL PARADISE	
2	COPENHAGEN	12	MAXIMILLIAN		
3	ENCHANTED	13	MILAN	CREATIONS™	
4	EVEREST	14	MISSION BEND	24	BERKSHIRE
5	FLORENCE	15	ROYAL LUXURY	25	CASA LINDA
6	FRITZ STRIPE	16	ROYAL VELOUR	26	CASA MARIA
7	HERMOSA BEACH	17	SABRINA	27	CASTLE HILL
8	LOFT	18	SAMANTHA	28	CHARISMA
9	MACKENNA	19	SHIMMER	29	GLACIER BAY
10	MARQUISE DIAMOND	20	TAJ MAHAL	30	LA SCALA
		21	TERRA FIRMA	31	MALIA



## BROADLOOM SPECIAL BUYS

---

32	MASQUE	41	SANTA MONICA	51	MELIA
33	PALLADINO	42	SANTA ROSA	52	MOSAIC
34	PALOS VERDES	43	STOCKBRIDGE	53	PAPYRUS
35	QUINCY	44	VIENNA	54	POPLAR
36	RAELYN	45	WILD PLAINS	55	SEQUOIA
37	ROYAL TARTAN	PURITY®	56	VELVET	
38	SALEM	48	ALDER		
39	SANTA BARBARA	49	BIRCH		
40	SANTA CLARITA	50	HAZEL		

# PREMIERE

---



# COPENHAGEN

---

**BRAND**

*Premiere*

**PILE**

*100% Pure Wool*

**WEAVE**

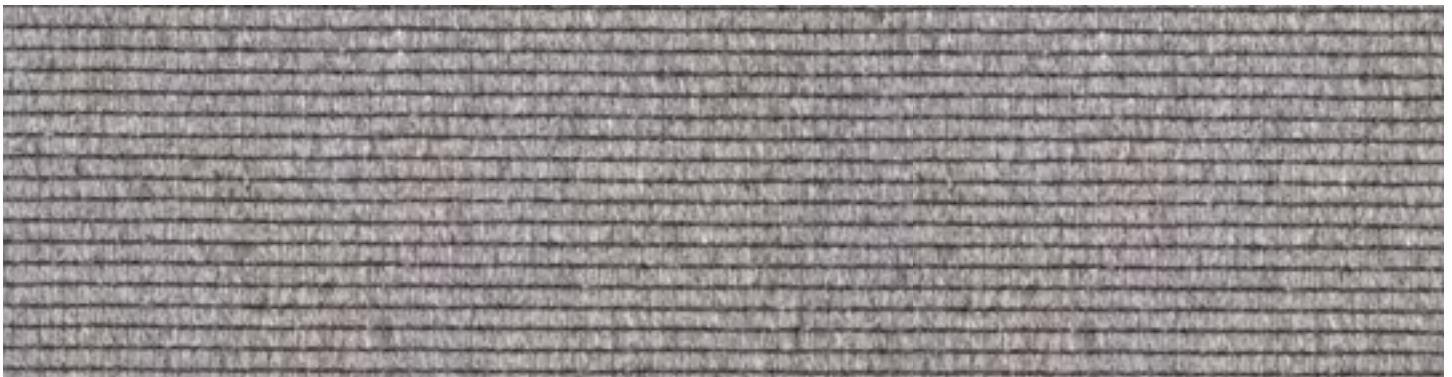
*Structured Flatwoven*

**PATTERN REPEAT**

*No Repeat*

**WIDTH**

*13'2" (4 Meters)*



**9201/0001**

Dark Grey

# ENCHANTED

**BRAND**

*Premiere*

**PILE**

*100% Pure Wool*

**CONSTRUCTION**

*Hand-Tufted Cut and Loop Pile*

**PATTERN REPEAT**

*9" W x 8" L (Straight Match)*

**WIDTH**

*15'*



**6012/0001**

Vanilla



**6012/0002**

Heather



**6012/0003**

Sky



**6012/0004**

Navy



**6012/0005**

Sterling

# EVEREST

---

## BRAND

Premiere

## PILE

100% Heat-Set Courtron™ Polypropylene

## WEAVE

Face-to-Face Woven Wilton Featuring  
One Million Points Per Square Meter

## PATTERN REPEAT

Royal Scroll - 19.75" W x 19.75" L (Half-Drop Match)

Gridiron - 39.37" W x 39.37" L (Half-Drop Match)

Isfahan - 39.37" W x 39.37" L (Straight Match)

## WIDTH

13'2" (4 Meters)



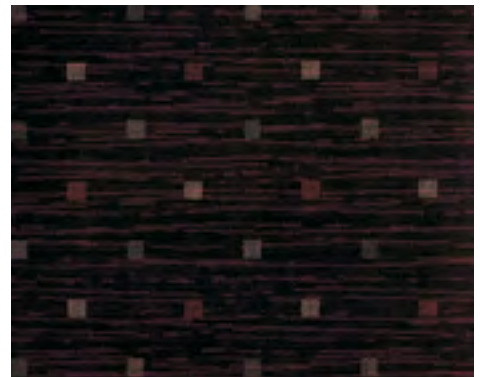
**3318/4840**

Royal Scroll/Tan



**3323/4873**

Gridiron/Tan



**3323/4879**

Gridiron/Black



**3323/4883**

Gridiron/Sage Green



**3351/4876**

Isfahan/Midnight

# FLORENCE

---

**BRAND**

*Premiere*

**PILE**

*100% Pure Wool*

**WEAVE**

*Woven Wilton Loop Pile*

**PATTERN REPEAT**

*10.39" W x 9.45" L (Straight Match)*

**WIDTH**

*13'*



**6018/0001**

Blue-White



**6018/0002**

Sage-White



**6018/0003**

Sand-White



**6018/0004**

Grey-White



# FRITZ STRIPE

---

**BRAND**

*Premiere*

**PILE**

*100% Pure Wool*

**WEAVE**

*Wilton Woven Flatweave*

**PATTERN REPEAT**

*15.50" W x .75" L (Straight Match)*

**WIDTH**

*13'2" (4 Meters)*



**2243/0004**

Cranberry

# HERMOSA BEACH

---

**BRAND**

*Premiere*

**PILE**

*100% Pure Wool*

**WEAVE**

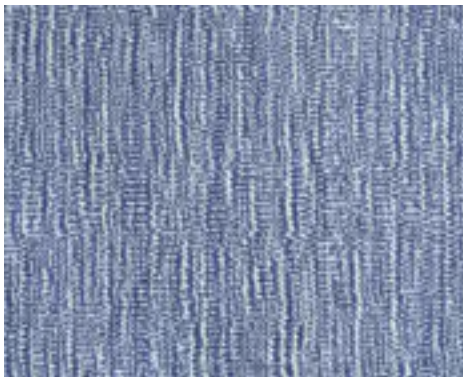
*Hand-Loomed Loop Pile*

**PATTERN REPEAT**

*No Repeat*

**WIDTH**

*15'*



**6703/0001**

Blue-White



**6703/0002**

Charcoal-White



**6703/0003**

Grey-White



**6703/0004**

Almond-White



**6703/0005**

Taupe-White



**6703/0006**

Light Green-White

# LOFT

---

**BRAND**

*Premiere*

**PILE**

*100% Pure Wool*

**WEAVE**

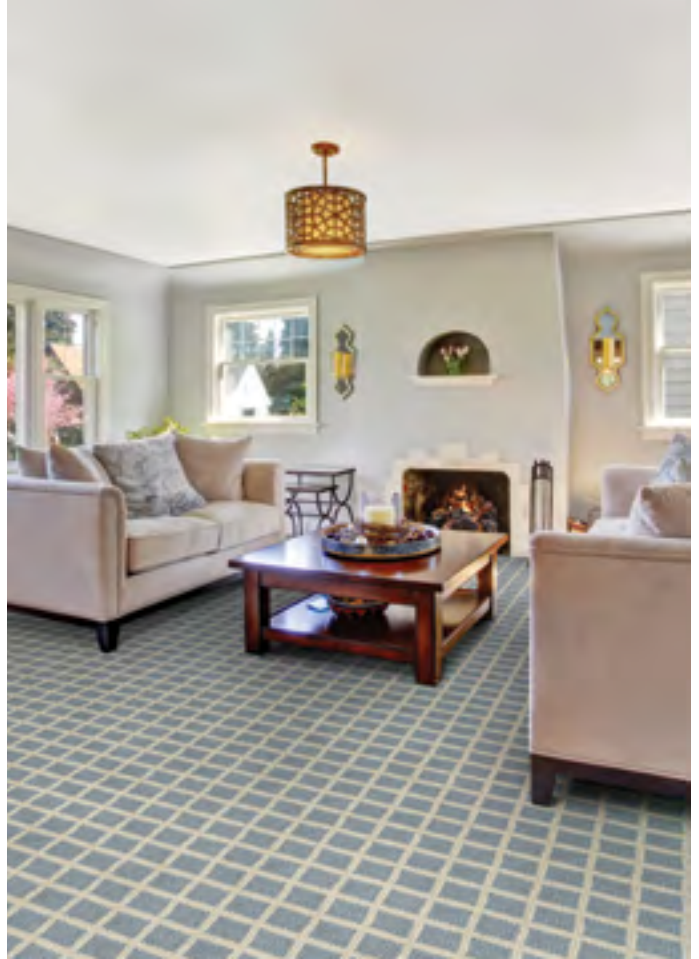
*Hand-Loomed Loop Pile*

**PATTERN REPEAT**

*3" W x 3" L (Straight Match)*

**WIDTH**

*15'*



**2910/0001**

Sandalwood



**2910/0002**

Jade



**2910/0004**

Cement



**2910/0005**

Pepper

# MACKENNA

---

**BRAND**

*Premiere*

**PILE**

*72% Wool / 28% Jute*

**WEAVE**

*Hand-Loomed Flatweave*

**PATTERN REPEAT**

*.36" W x .36" L (Straight Match)*

**WIDTH**

*15'*



**8822/0001**

Linen



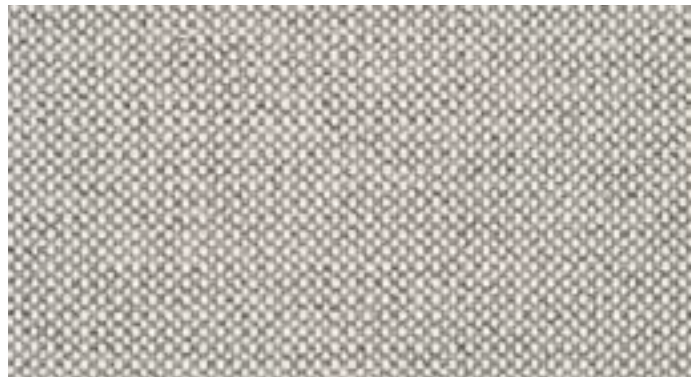
**8822/0002**

Driftwood



**8822/0004**

Sky Blue



**8822/0005**

Flint Grey

# MARQUISE DIAMOND

**BRAND**

*Premiere*

**PILE**

*100% Pure Wool*

**WEAVE**

*Hand-Loomed Loop Pile*

**PATTERN REPEAT**

*2.5" W x 2.5" L (Straight Match)*

**WIDTH**

*15'*



**6901/0001**

Navy



**6901/0002**

Nutmeg



**6901/0003**

Smoke



**6901/0004**

Mint



**6901/0005**

Mocha

# MATRIX

---

**BRAND**

*Premiere*

**PILE**

*60% Wool / 40% Viscose*

**WEAVE**

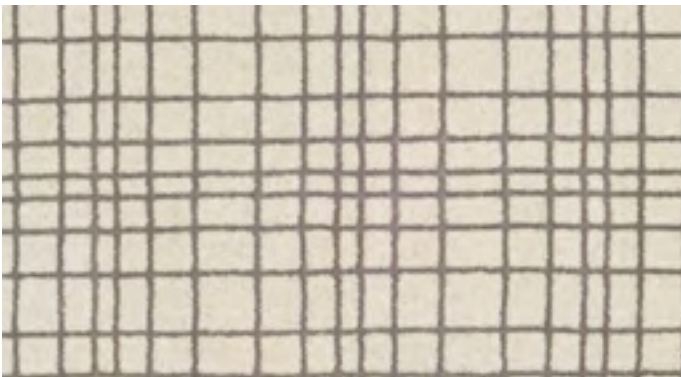
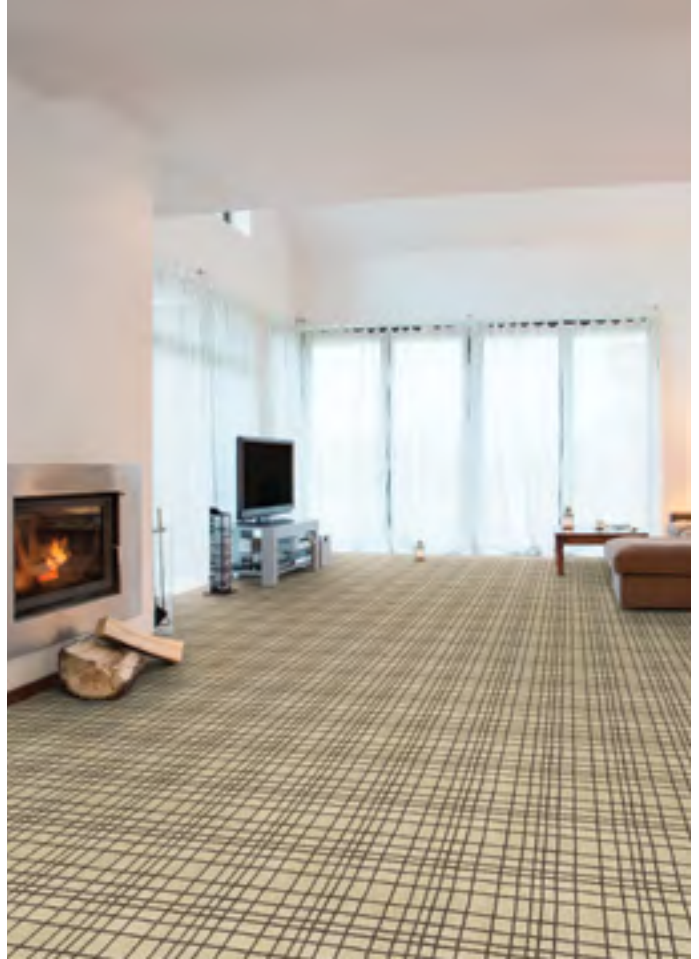
*Hand-Loomed Loop Pile*

**PATTERN REPEAT**

*8.85" W x 8.66" L (Straight Match)*

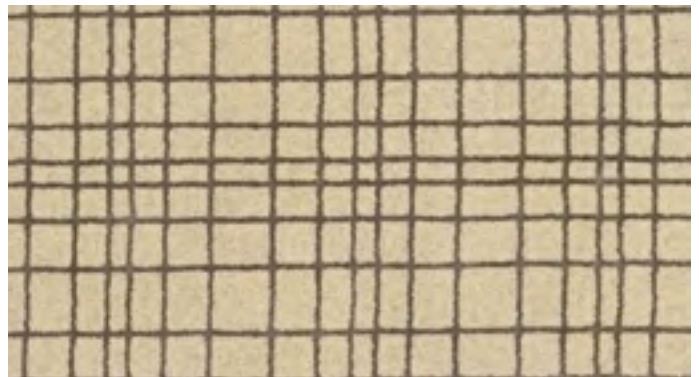
**WIDTH**

*15'*



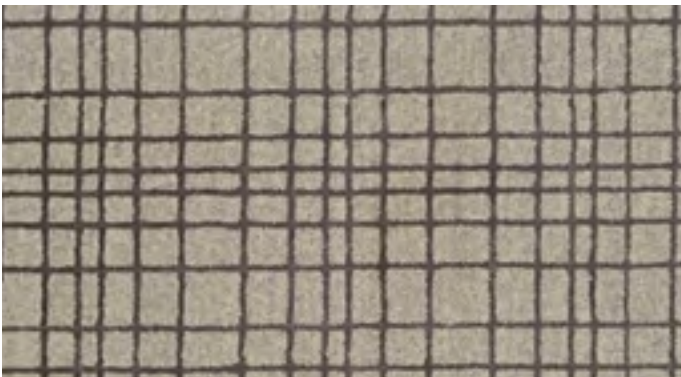
**4015/0001**

Nickel



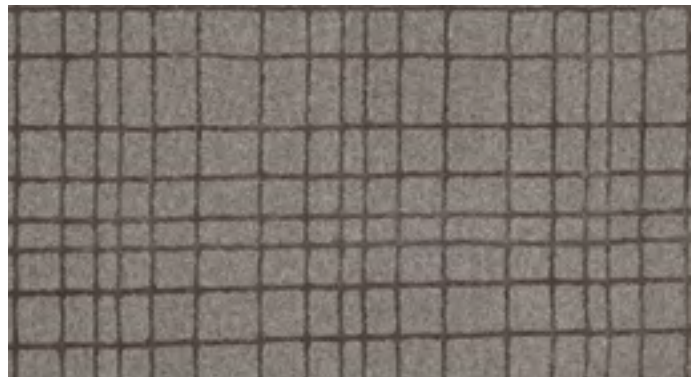
**4015/0002**

Mineral



**4015/0004**

Steel



**4015/0005**

Pewter

# MAXIMILLIAN

---

**BRAND**

*Premiere*

**PILE**

*60% Wool / 40% Tencel®*

**CONSTRUCTION**

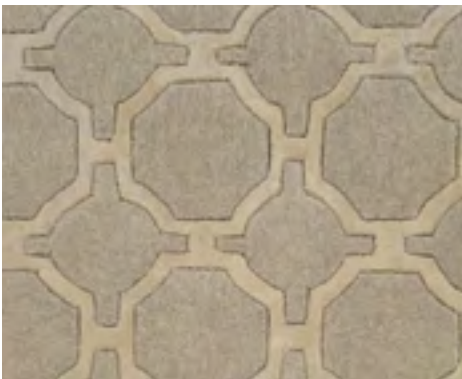
*Hand-Tufted, Hand-Carved*

**PATTERN REPEAT**

*6" W x 6" L (Straight Match)*

**WIDTH**

*15'*



**2900/0001**

Oatmeal



**2900/0002**

Smoke



**2900/0003**

Pewter



**2900/0004**

Taupe



**2900/0005**

Charcoal

# MILAN

---

**BRAND**

*Premiere*

**PILE**

*100% Pure Wool*

**WEAVE**

*Woven Wilton Loop Pile*

**PATTERN REPEAT**

*5.20" W x 5.90" L (Straight Match)*

**WIDTH**

*13'*



**6019/0001**

Blue-White



**6019/0002**

Sage-White



**6019/0004**

Sand-White



**6019/0005**

Grey-White



# MISSION BEND

---

**BRAND**

*Premiere*

**PILE**

*100% Pure Wool*

**WEAVE**

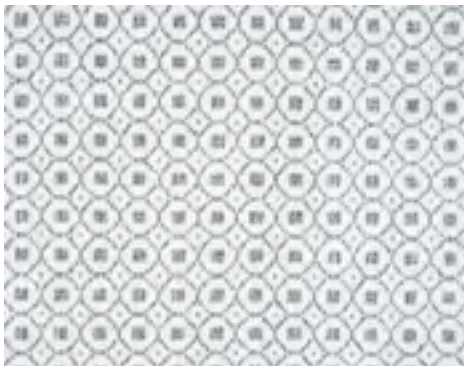
*Hand-Loomed Loop Pile*

**PATTERN REPEAT**

*5.5" W x 5.5" L (Straight Match)*

**WIDTH**

*15'*



**7180/0001**  
Medium Grey



**7180/0002**  
Light Blue



**7180/0003**  
Blue



**7180/0004**  
Light Grey



**7180/0005**  
Beige

# ROYAL LUXURY

## BRAND

Premiere

## PILE

100% Pure New Zealand Wool

## WEAVE

Face-to-Face Woven Wilton, Hand-Carved and Space Dyed

## PATTERN REPEAT

Brentwood - 39.37" W x 39.37" L (Half-Drop Match)

Woodland Trellis - 13" W x 13" L (Straight Match)

Winslow - 39.37" W x 39.37" L (Half-Drop Match)

## WIDTH

13'2" (4 Meters)



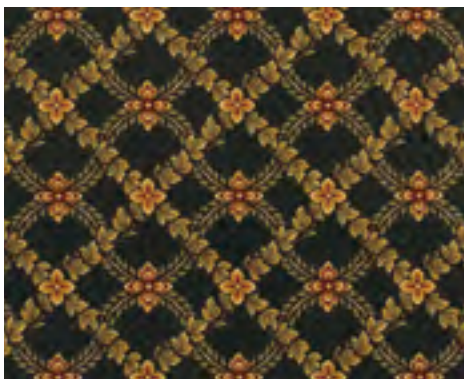
**1323/0003**  
Brentwood/Ebony



**1325/0001**  
Woodland Trellis/Linen-Beige



**1325/0002**  
Woodland Trellis/Bordeaux



**1325/0003**  
Woodland Trellis/Ebony



**1327/0001**  
Winslow/Linen-Beige



**1327/0003**  
Winslow/Ebony

# ROYAL VELOUR

---

**BRAND**

*Premiere*

**PILE**

*100% Pure Wool*

**WEAVE**

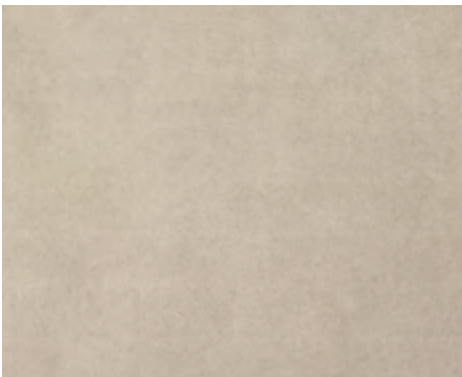
*Hand-Loomed Cut-Pile*

**PATTERN REPEAT**

*No Repeat*

**WIDTH**

*13'2" (4 Meters)*



**7780/0001**

Latté



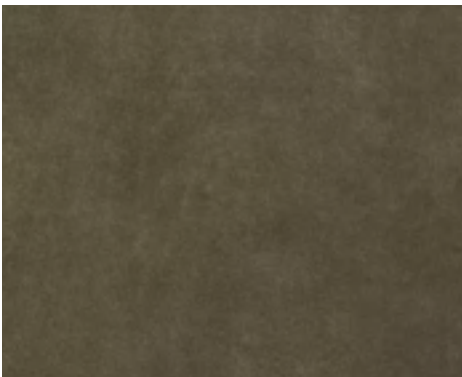
**7780/0002**

Sand



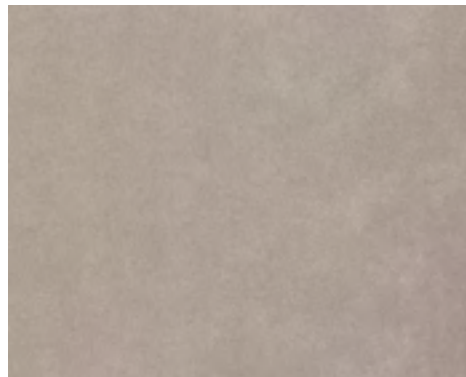
**7780/0003**

Mushroom



**7780/0004**

Tusk



**7780/0005**

Silver

# SABRINA

---

**BRAND**

*Premiere*

**PILE**

*100% Pure Wool*

**WEAVE**

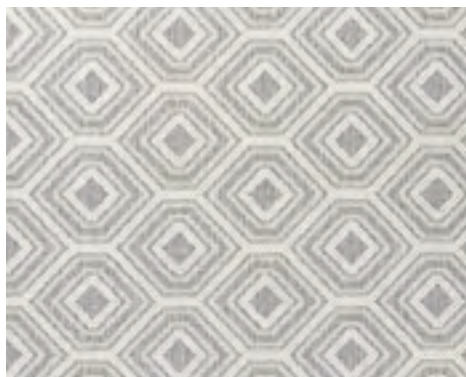
*Woven Wilton Loop Pile*

**PATTERN REPEAT**

*8" W x 5" L (Straight Match)*

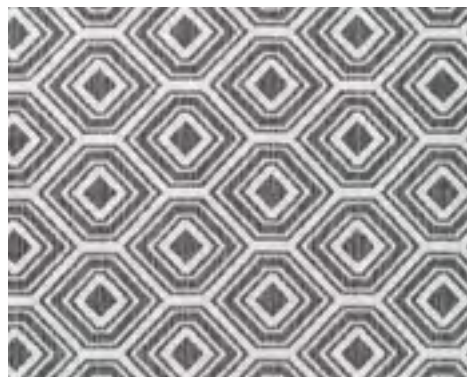
**WIDTH**

*13'*



**3811/0001**

Mist



**3811/0002**

Onyx



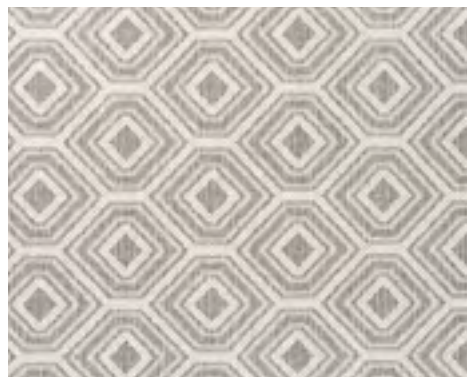
**3811/0003**

Sky



**3811/0004**

Bisque



**3811/0005**

Mushroom

# SAMANTHA

---

**BRAND**

*Premiere*

**PILE**

*100% Pure Wool*

**WEAVE**

*Woven Wilton Loop Pile*

**PATTERN REPEAT**

*5" W x 5" L (Straight Match)*

**WIDTH**

*13'*



**3812/0001**

Mist



**3812/0002**

Onyx



**3812/0003**

Sky



**3812/0004**

Bisque



**3812/0005**

Mushroom

# SHIMMER

---

**BRAND**

*Premiere*

**PILE**

*60% Wool / 30% Cotton / 10% Tencel®*

**WEAVE**

*Hand-Loomed Loop Pile*

**PATTERN REPEAT**

*No Repeat*

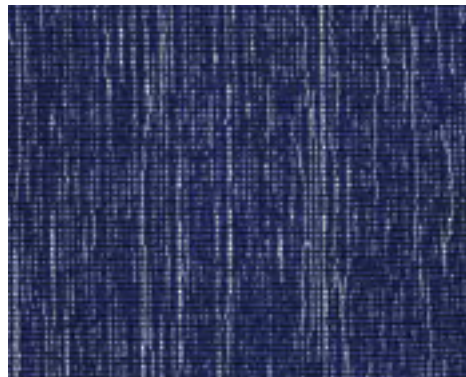
**WIDTH**

*15'*



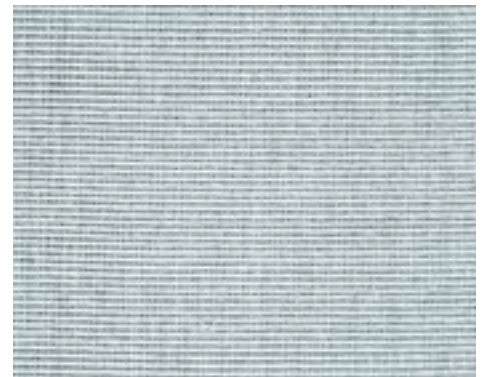
**6001/0001**

Khaki



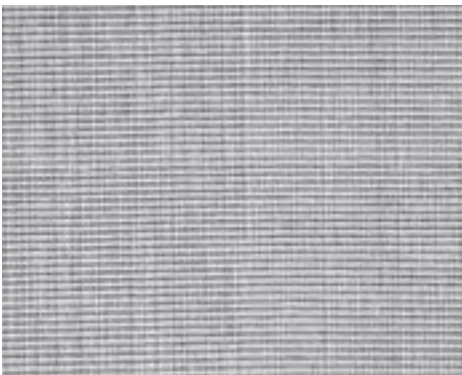
**6001/0002**

Denim



**6001/0003**

Mist



**6001/0004**

Cadet



**6001/0005**

Midnight



**6001/0006**

Burl

# TAJ MAHAL

---

**BRAND**

*Premiere*

**PILE**

*100% Pure Wool*

**CONSTRUCTION**

*Tufted Loop Pile Berber*

**PATTERN REPEAT**

*No Repeat*

**WIDTH**

*13'2" (4 Meters)*



**2000/0003**

Dark Beige

# TERRA FIRMA

---

**BRAND**

*Premiere*

**PILE**

*100% Pure Wool*

**WEAVE**

*Hand-Loomed Loop Pile*

**PATTERN REPEAT**

*No Repeat*

**WIDTH**

*15'*



**6401/0001**

Gypsum



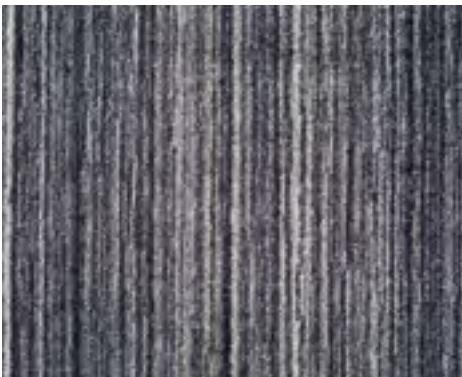
**6401/0002**

Mica



**6401/0003**

Quartz



**6401/0004**

Iron Ore



**6401/0005**

Calcite



# TROPICAL PARADISE

---

**BRAND**

*Premiere*

**PILE**

*100% Pure Wool*

**WEAVE**

*Hand-Loomed Loop Pile*

**PATTERN REPEAT**

*4" W x 5.5" L (Straight Match)*

**WIDTH**

*15'*



**6107/0001**  
Tidal Lagoon



**6107/0002**  
Winter Chill



**6107/0003**  
Ocean Drive



**6107/0004**  
River Wild



**6107/0005**  
Beach Walk

# CREATIONS™

---



# BERKSHIRE

---

**BRAND**

*Creations™*

**PILE**

*100% Heat-Set Courtron™ Polypropylene*

**WEAVE**

*Woven Wilton Loop Pile*

**PATTERN REPEAT**

*24" W x 6" L (Straight Match)*

**WIDTH**

*12'*



**CBB1/0004**

Harvest Green

# CASA LINDA

---

**BRAND**

*Creations™*

**PILE**

*100% PET (High Content Recycled Materials Used)*

**WEAVE**

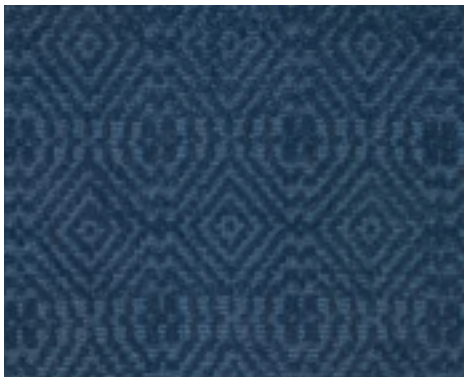
*Hand-Loomed Cut and Loop Pile*

**PATTERN REPEAT**

*5" W x 6.5" L (Straight Match)*

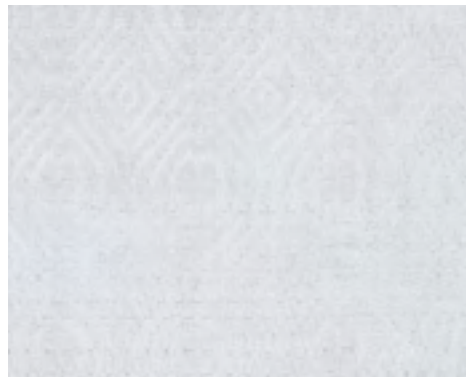
**WIDTH**

*15'*



**CBCL/0001**

Navy



**CBCL/0002**

Ivory



**CBCL/0003**

Green



**CBCL/0005**

Grey



**CBCL/0006**

Taupe

# CASA MARIA

---

**BRAND**

*Creations™*

**PILE**

*100% PET (High Content Recycled Materials Used)*

**WEAVE**

*Hand-Loomed Cut and Loop Pile*

**PATTERN REPEAT**

*6" W x 4.5" L (Straight Match)*

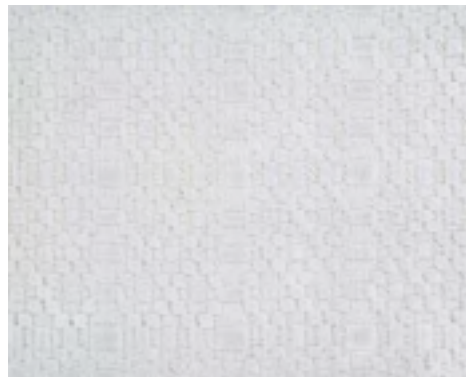
**WIDTH**

*15'*



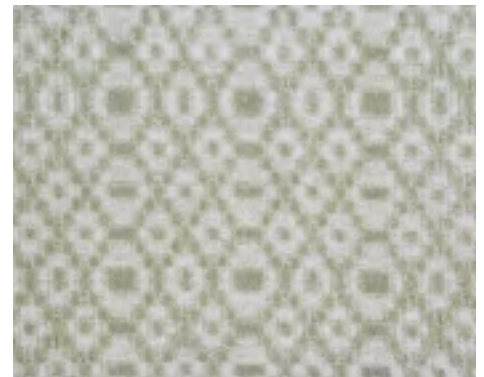
**CBCM/0001**

Navy



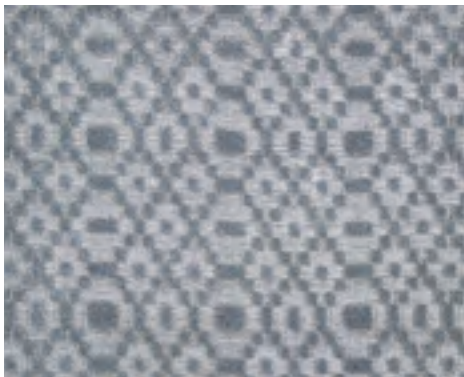
**CBCM/0002**

Ivory



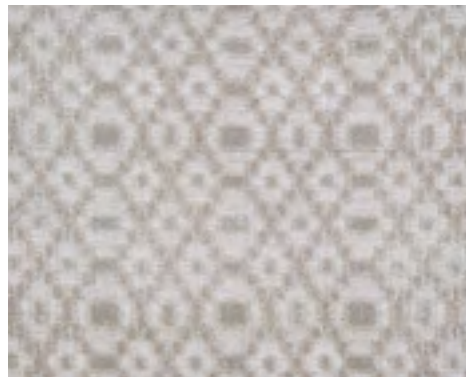
**CBCM/0003**

Green



**CBCM/0005**

Grey



**CBCM/0006**

Taupe

# CASTLE HILL

---

**BRAND**

*Creations™*

**PILE**

*100% Heat-Set Courtron™ Polypropylene*

**WEAVE**

*Woven Wilton Loop Pile*

**PATTERN REPEAT**

*8" W x 4.5" L (Straight Match)*

**WIDTH**

*12'*



**CBL6/0003**

Spruce Green

# CHARISMA

---

## BRAND

*Creations™*

## PILE

*100% Courtron™ Polypropylene*

## WEAVE

*Face-to-Face Woven Wilton Featuring  
One Million Points Per Square Meter*

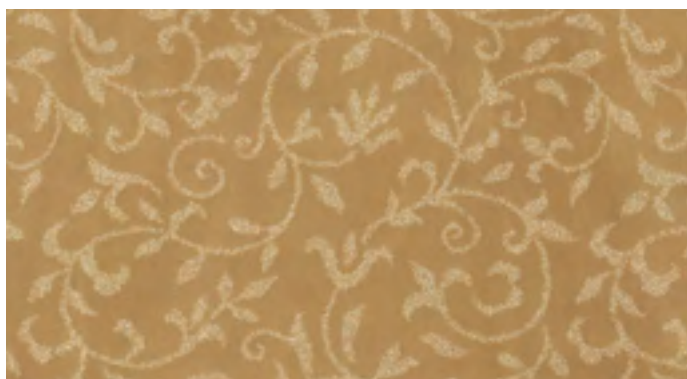
## PATTERN REPEAT

*Jacobean Vine - 19.75" W x 19.75" L (Straight Match)*

*Antique Damask - 6.5" W x 9.5" L (Straight Match)*

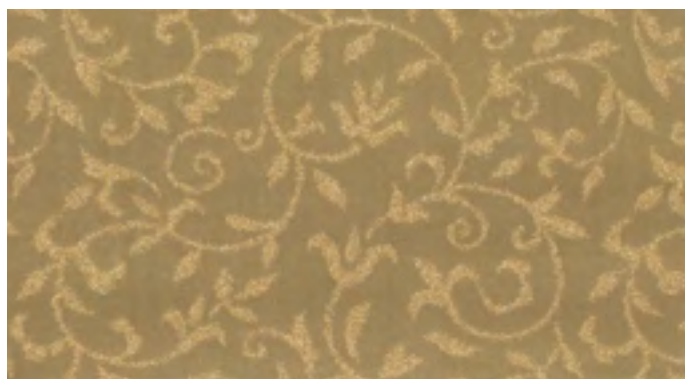
## WIDTH

*13'2" (4 Meters)*



### **CB68/0002**

Jacobean Vine/Beige



### **CB68/0003**

Jacobean Vine/Sage Green



### **CB69/0001**

Antique Damask/Ivory-Beige



### **CB69/0003**

Antique Damask/Sage Green

# GLACIER BAY

---

**BRAND**

*Creations™*

**PILE**

*80% PET / 20% Wool*

**WEAVE**

*Hand-Loomed Loop Pile*

**PATTERN REPEAT**

*Random Repeat*

**WIDTH**

*15'*



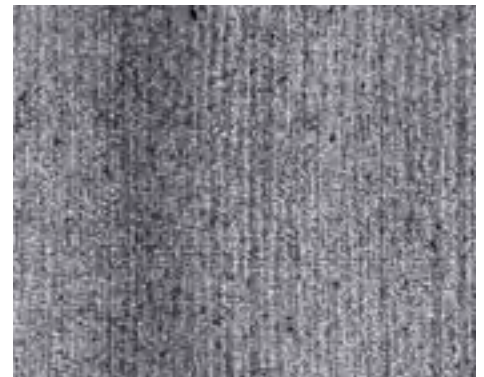
**CBG8/0001**

Bone



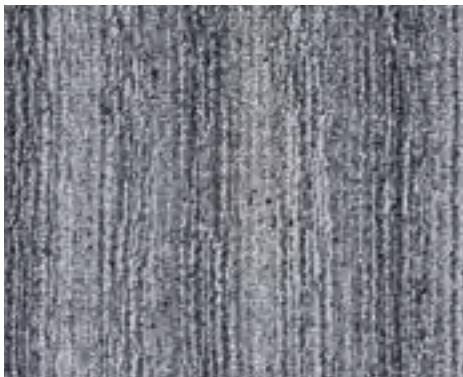
**CBG8/0002**

Clay



**CBG8/0003**

Stone



**CBG8/0005**

Fossil



**CBG8/0006**

Granite



# LA SCALA

---

**BRAND**

*Creations™*

**PILE**

*100% Heat-Set Courtron™ Polypropylene*

**WEAVE**

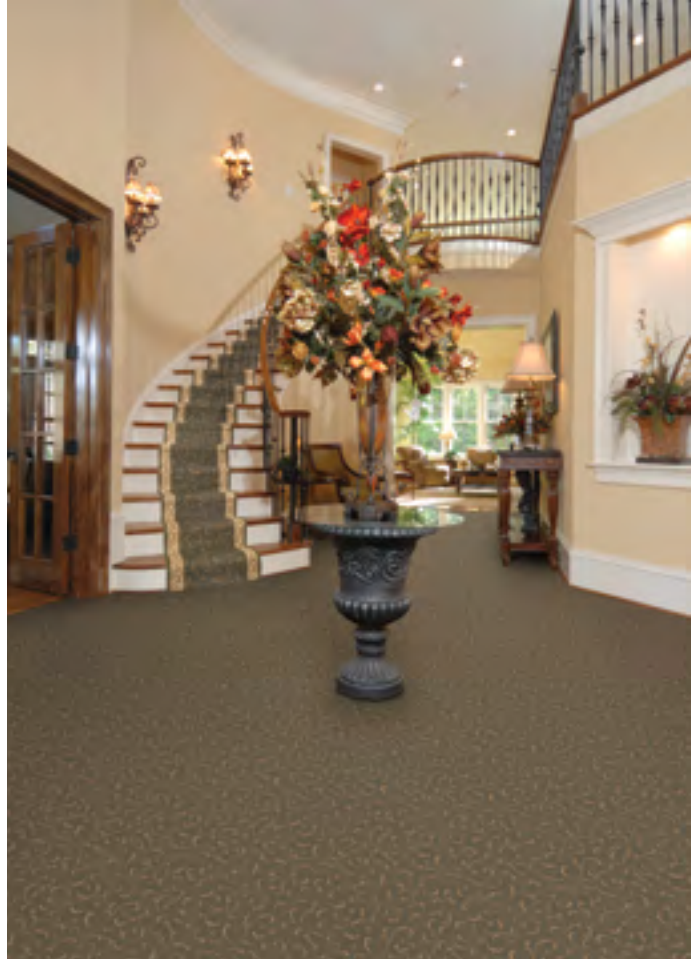
*Face-to-Face Woven Wilton Featuring  
A Unique Two Color, Two-Ply Twist*

**PATTERN REPEAT**

*19.68" W x 19.68" L (Half-Drop Match)*

**WIDTH**

*13'2" (4 Meters)*



**CBB2/0001**

Ivory



**CBB2/0002**

Moss



**CBB2/0005**

Chocolate

# MALIA

---

**BRAND**

*Creations™*

**PILE**

*100% Courtron™ Polypropylene*

**WEAVE**

*Structured Flatwoven*

**PATTERN REPEAT**

*1.50" W x 2.94" L (Straight Match)*

**WIDTH**

*13'2" (4 Meters)*



**CB12/0005**

Surf

# MASQUE

---

**BRAND**

*Creations™*

**PILE**

*100% Heat-Set Courtron™ Polypropylene*

**WEAVE**

*Woven Wilton Loop Pile*

**PATTERN REPEAT**

*48" W x 24" L (Straight Match)*

**WIDTH**

*12'*



**CBM1/0003**

Carnevale Green

# PALLADINO

## BRAND

Creations™

## PILE

100% Heat-Set Courtron™ Polypropylene

## WEAVE

Face-to-Face Woven Wilton Featuring  
A Unique Two Color, Two-Ply Twist

## PATTERN REPEAT

Arezzo - 13.25" W x 25" L (Straight Match)

Basilica - 31.50" W x 39.75" L (Straight Match)

Genoa - 3.94" W x 3.94" L (Straight Match)

Sorano - 13.25" W x 25" L (Straight Match)

## WIDTH

13'2" (4 Meters)



**CBD6/0001**

Arezzo/Ivory



**CBD6/0003**

Arezzo/Steel Blue



**CBD8/0002**

Genoa/Chocolate



**CBD9/0001**

Sorano/Caramel



**CBD9/0003**

Sorano/Chocolate

# PALOS VERDES

---

**BRAND**

*Creations™*

**PILE**

*100% Premium Nylon – Type 6,6*

**CONSTRUCTION**

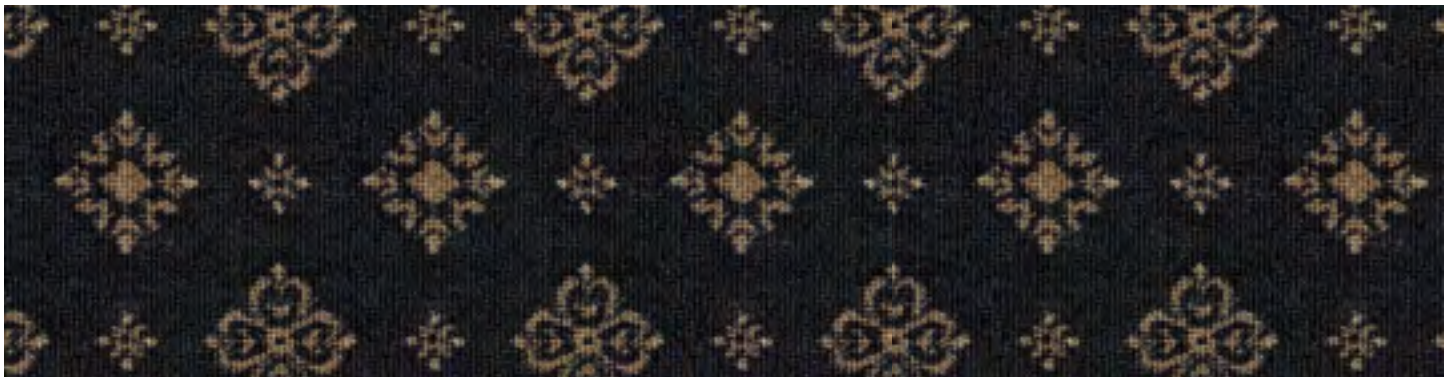
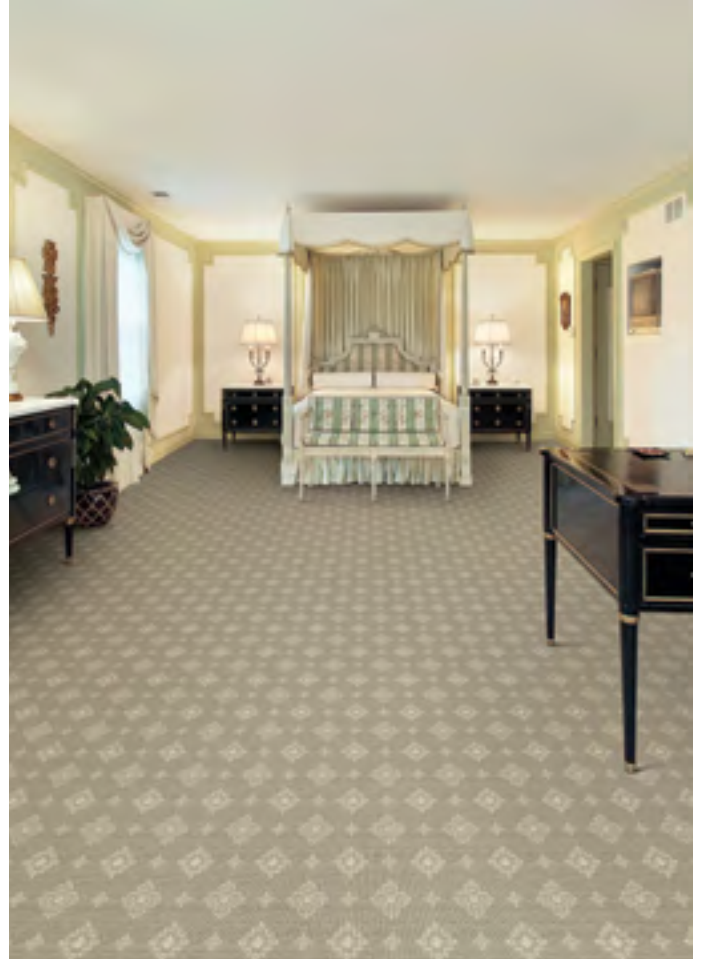
*Tufted Loop Pile Print*

**PATTERN REPEAT**

*6.37" W x 6.5" L (Straight Match)*

**WIDTH**

*13'2" (4 Meters)*



**CBH7/0005**

Midnight

# QUINCY

---

**BRAND**

*Creations™*

**PILE**

*60% Heat-Set Courtron™ Polypropylene /  
40% Polyester*

**WEAVE**

*Face-to-Face Woven Wilton*

**PATTERN REPEAT**

*80" W x 157.48" L (Straight Match)*

**WIDTH**

*13'2" (4 Meters)*



**CBQ1/0003**

Goldenrod

# RAELYN

---

## BRAND

*Creations™*

## PILE

*100% Heat-Set Courtron™ Polypropylene*

## WEAVE

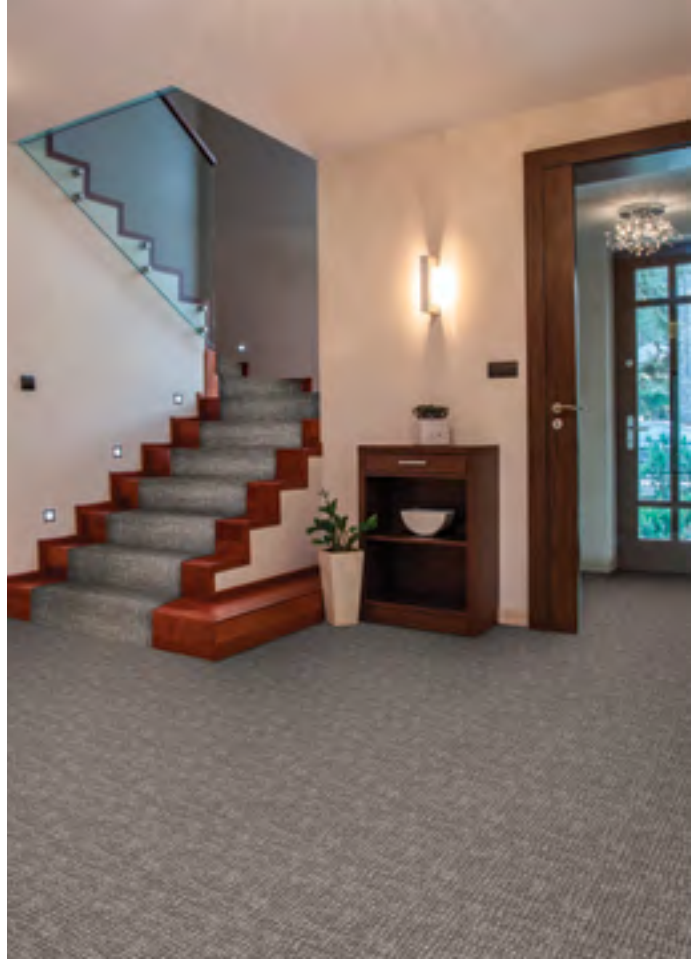
*Face-to-Face Woven Wilton Featuring  
One Million Points Per Square Meter*

## PATTERN REPEAT

*39.37" W x 39.68" L (Straight Match)*

## WIDTH

*13'2" (4 Meters)*



**CBK3/0002**

Tusk

# ROYAL TARTAN

---

**BRAND**

*Creations™*

**PILE**

*100% Heat-Set Courtron™ Polypropylene*

**WEAVE**

*Face-to-Face Woven Wilton Featuring  
One Million Points Per Square Meter*

**PATTERN REPEAT**

*9.84" W x 9.84" L (Straight Match)*

**WIDTH**

*13'2" (4 Meters)*



**CB38/0504**

Onyx



# SALEM

---

**BRAND**

*Creations™*

**PILE**

*60% Heat-Set Courtron™ Polypropylene /  
40% Polyester*

**WEAVE**

*Face-to-Face Woven Wilton*

**PATTERN REPEAT**

*40.94" W x 78.74" L (Straight Match)*

**WIDTH**

*13'2" (4 Meters)*



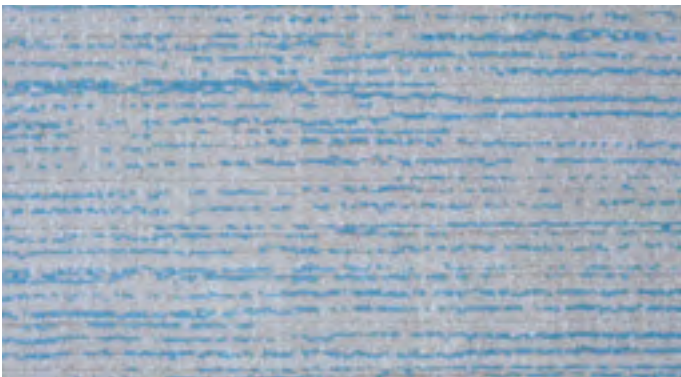
**CBS8/0001**

Harbor Mist



**CBS8/0003**

Goldenrod



**CBS8/0005**

Cerulean

# SANTA BARBARA

---

**BRAND**

*Creations™*

**PILE**

*100% Nylon*

**CONSTRUCTION**

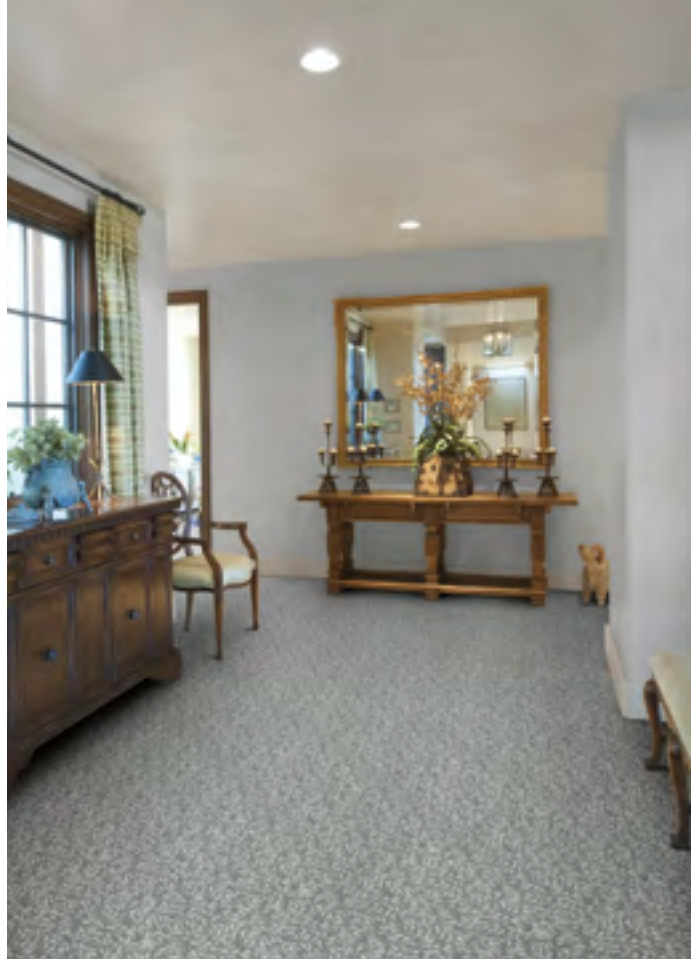
*Tufted Cut-Pile Print*

**PATTERN REPEAT**

*17.48" W x 15.32" L (Straight Match)*

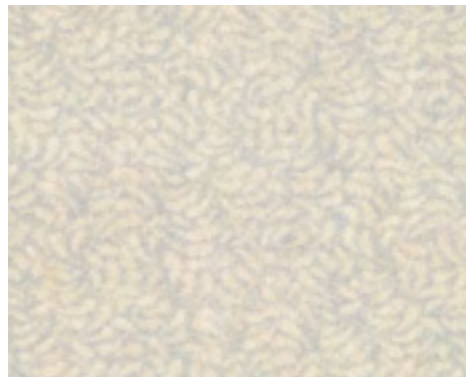
**WIDTH**

*13'2" (4 Meters)*



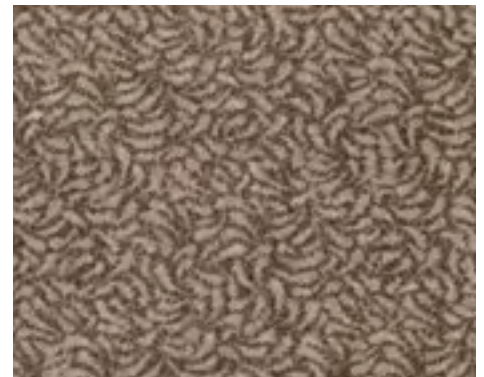
**CBI7/0001**

Grey



**CBI7/0002**

Soft Grey



**CBI7/0003**

Chocolate



**CBI7/0005**

Midnight



**CBI7/0006**

Toffee

# SANTA CLARITA

---

## BRAND

*Creations™*

## PILE

*100% Premium Nylon – Type 6,6*

## CONSTRUCTION

*Tufted Loop Pile Print*

## PATTERN REPEAT

*5.62" W x 6.87" L (Straight Match)*

## WIDTH

*13'2" (4 Meters)*



### **CBH5/0001**

Beige



### **CBH5/0002**

Goldenrod



### **CBH5/0007**

Midnight

# SANTA MONICA

---

## BRAND

Creations™

## PILE

100% Premium Nylon – Type 6,6

## CONSTRUCTION

Tufted Loop Pile Print

## PATTERN REPEAT

8.5" W x 10.5" L (Half-Drop Match)

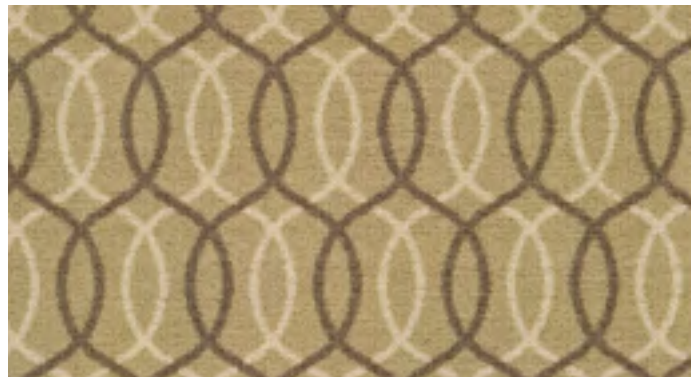
## WIDTH

13'2" (4 Meters)



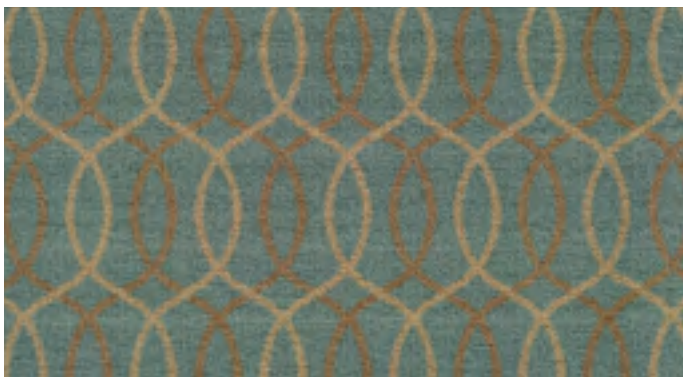
### **CBH4/0001**

Beige



### **CBH4/0002**

Goldenrod



### **CBH4/0006**

Aqua

# SANTA ROSA

---

**BRAND**

*Creations™*

**PILE**

*100% Nylon*

**CONSTRUCTION**

*Tufted Cut-Pile Print*

**PATTERN REPEAT**

*13.11" W x 14.37" L (Straight Match)*

**WIDTH**

*13'2" (4 Meters)*



**CBI6/0005**

Midnight



**CBI6/0006**

Storm

# STOCKBRIDGE

---

**BRAND**

*Creations™*

**PILE**

*100% Heat-Set Courtron™ Polypropylene*

**WEAVE**

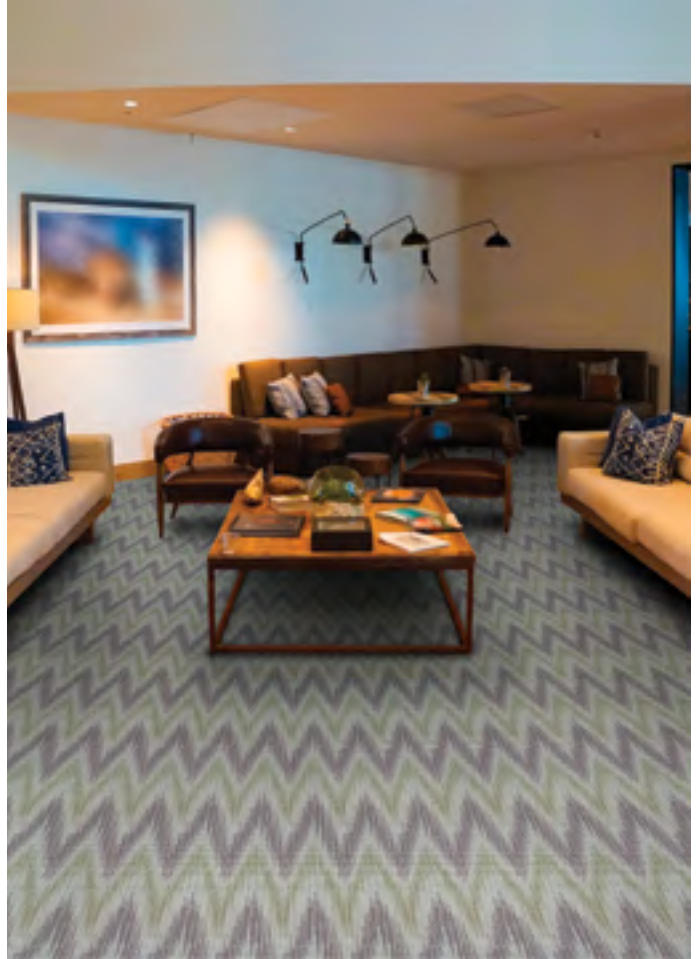
*Woven Wilton Loop Pile*

**PATTERN REPEAT**

*24" W x 36" L (Straight Match)*

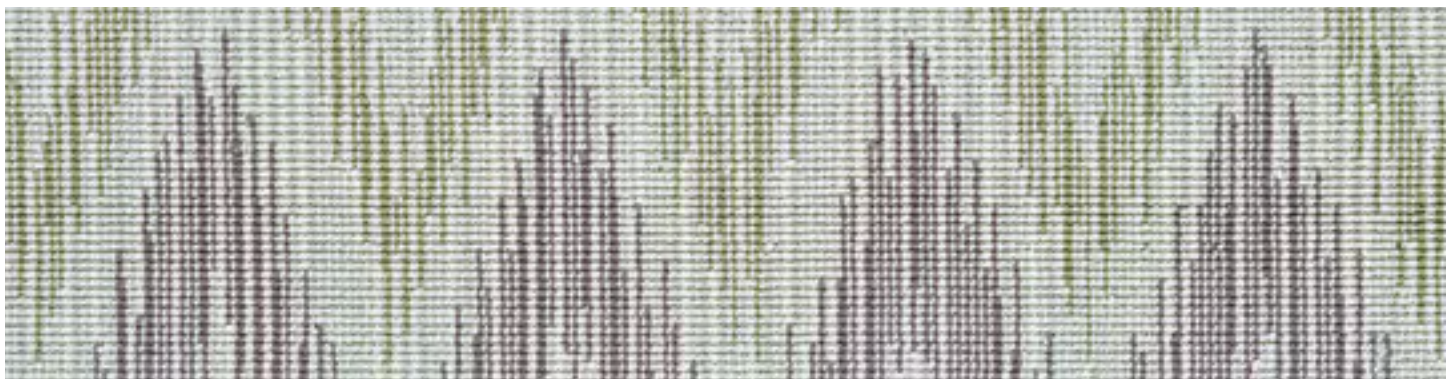
**WIDTH**

*12'*



**CBS1/0003**

Thicket Brown



**CBS1/0004**

Harvest Green

# VIENNA

---

**BRAND**

*Creations™*

**PILE**

*100% Heat-Set Courtron™ Polypropylene*

**WEAVE**

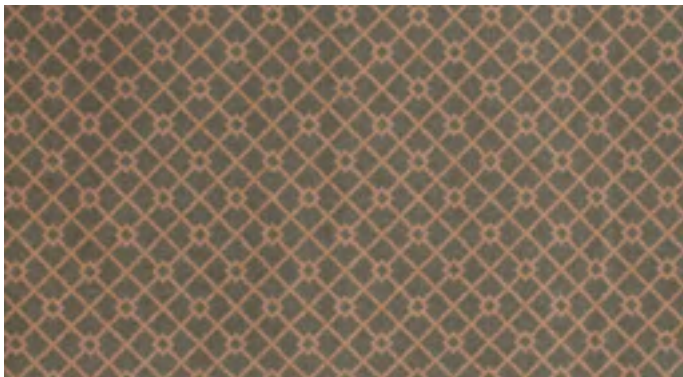
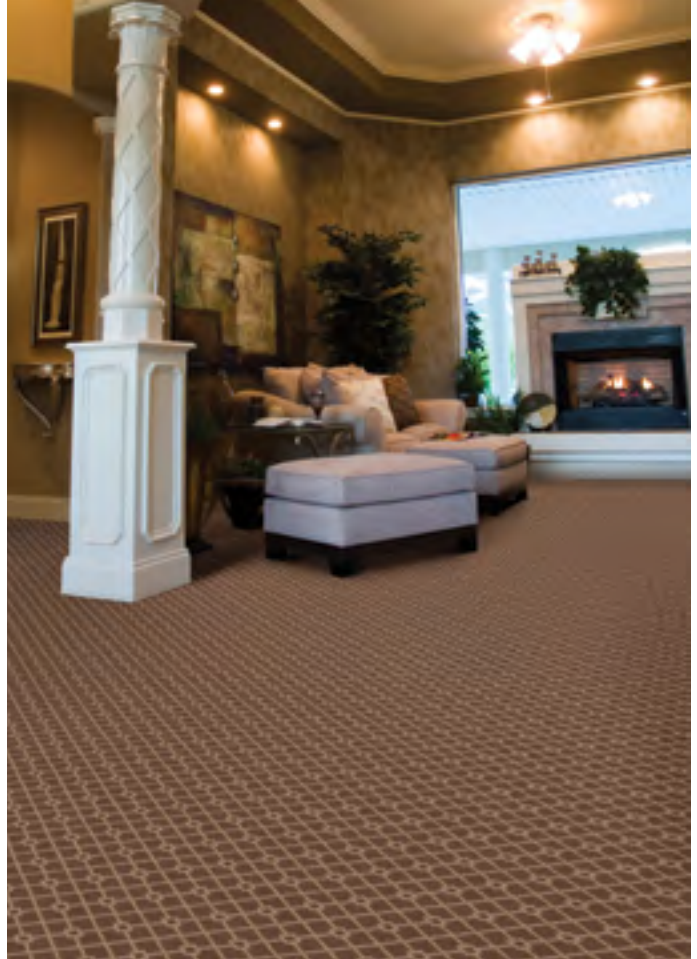
*Face-to-Face Woven Wilton Featuring  
A Unique Two Color, Two-Ply Twist*

**PATTERN REPEAT**

*1.57" W x 3.14" L (Half-Drop Match)*

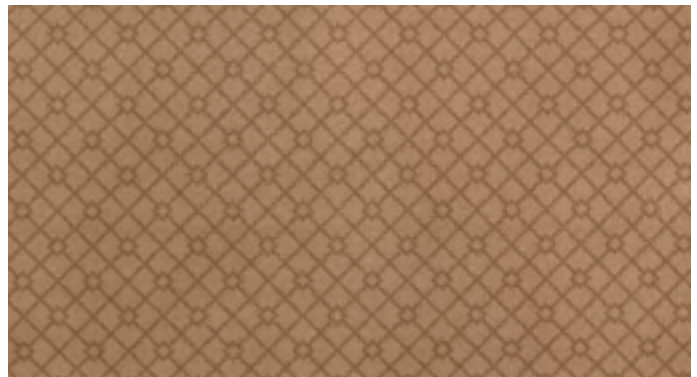
**WIDTH**

*13'2" (4 Meters)*



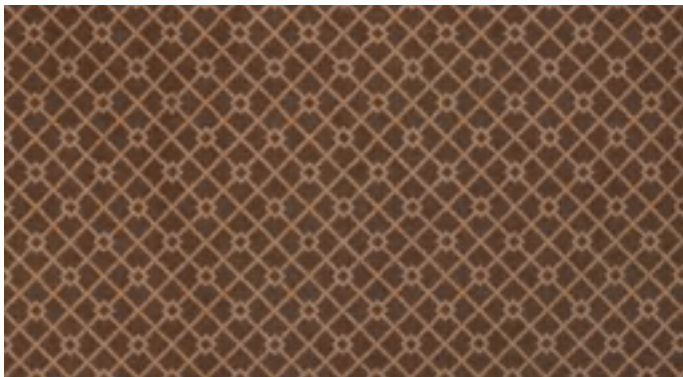
**CBB4/0002**

Pistachio/Camel



**CBB4/0003**

Camel/Brown



**CBB4/0004**

Chocolate/Camel

# WILD PLAINS

---

## BRAND

*Creations™*

## PILE

*100% Heat-Set Courtron™ Polypropylene*

## WEAVE

*Face-to-Face Woven Wilton Featuring  
One Million Points Per Square Meter*

## PATTERN REPEAT

*Namibia - 22.50" W x 31.50" L (Straight Match)*

## WIDTH

*13'2" (4 Meters)*



**CBE3/0001**

Doeskin





# PURITY®

---



# ALDER

---

**BRAND**

*Purity®*

**PILE**

*100% Undyed Natural Wool*

**WEAVE**

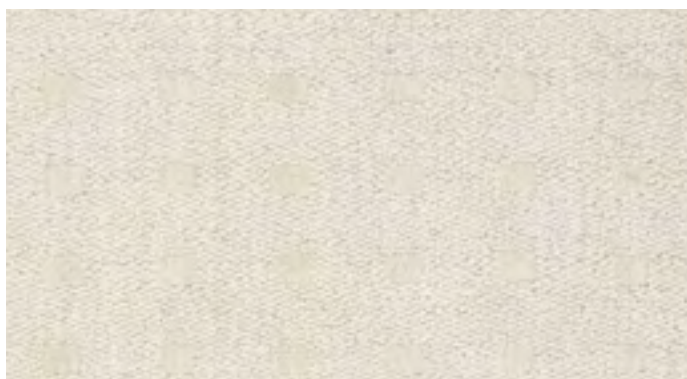
*Hand-Loomed Cut and Loop Pile*

**PATTERN REPEAT**

*3" W x 2.6" L (Straight Match)*

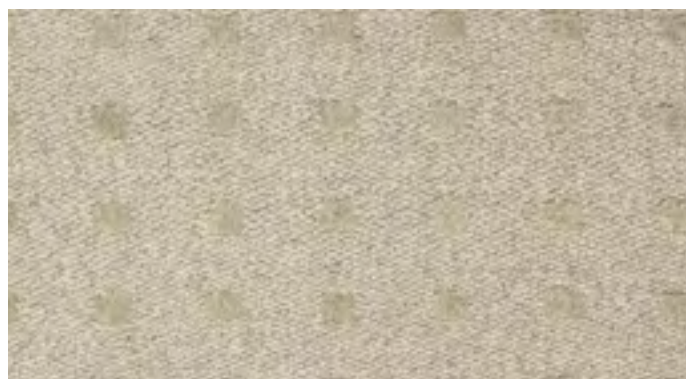
**WIDTH**

*15'*



**PT70/0001**

Ivory



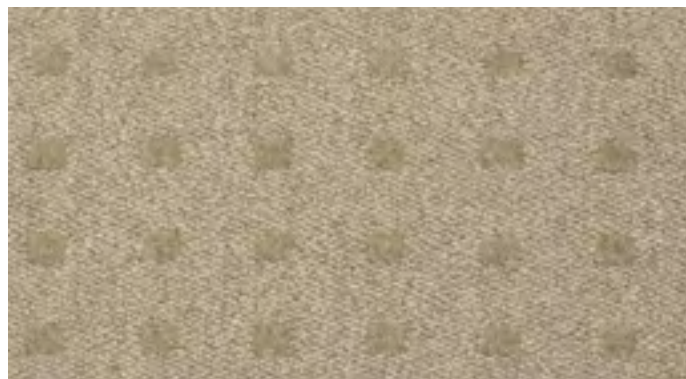
**PT70/0002**

Oatmeal



**PT70/0003**

Steel Grey



**PT70/0005**

Barley

# BIRCH

---

**BRAND**

Purity®

**PILE**

100% Undyed Natural Wool

**WEAVE**

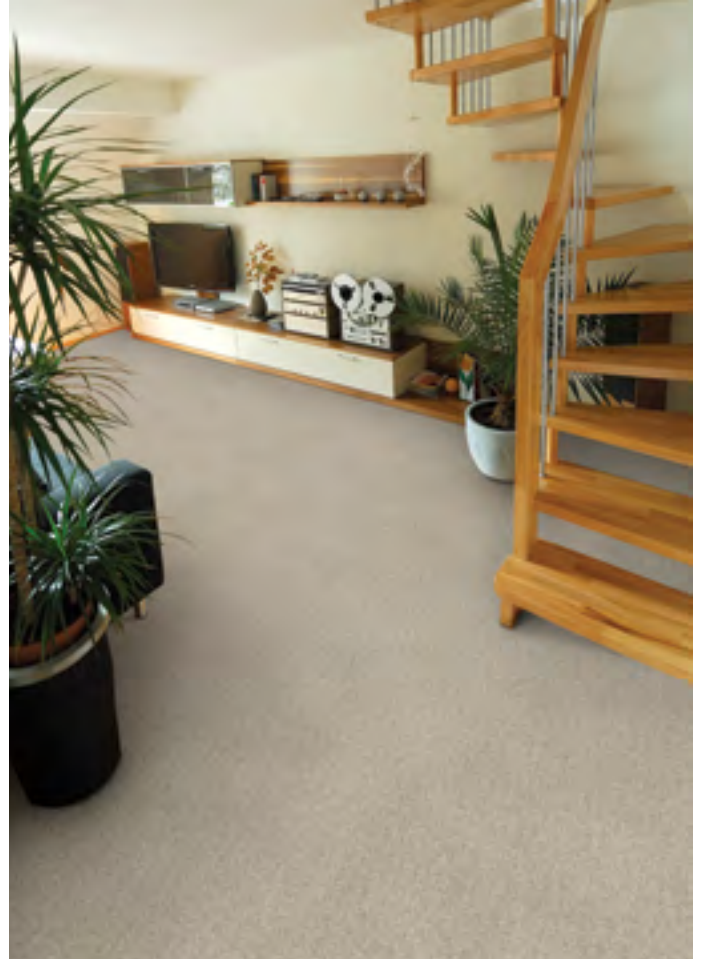
Hand-Loomed Cut Loop Pile, Tip-Sheared

**PATTERN REPEAT**

Random Repeat in Both Width and Length

**WIDTH**

15'



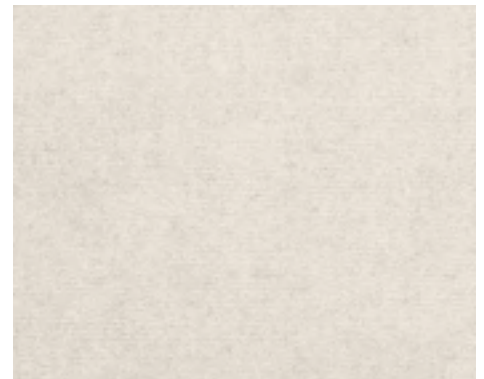
**PT16/0001**

Oatmeal



**PT16/0002**

Beige



**PT16/0003**

Ivory



**PT16/0004**

Taupe



**PT16/0005**

Steel Grey

# HAZEL

---

**BRAND**

*Purity®*

**PILE**

*100% Undyed Natural Wool*

**WEAVE**

*Hand-Loomed Flatweave*

**PATTERN REPEAT**

*3.74" W x 7.87" L (Straight Match)*

**WIDTH**

*15'*



**PT35/0001**

Fawn



**PT35/0002**

Buff



**PT35/0003**

Driftwood



**PT35/0004**

Linen



**PT35/0005**

Flint Grey

# MELIA

---

**BRAND**

*Purity®*

**PILE**

*100% Pure Wool*

**WEAVE**

*Hand-Loomed Loop Pile. Tip-Sheared*

**PATTERN REPEAT**

*Random Repeat in Both Width and Length*

**WIDTH**

*15'*



**PT60/0001**

Smoke



**PT60/0002**

Tidewater



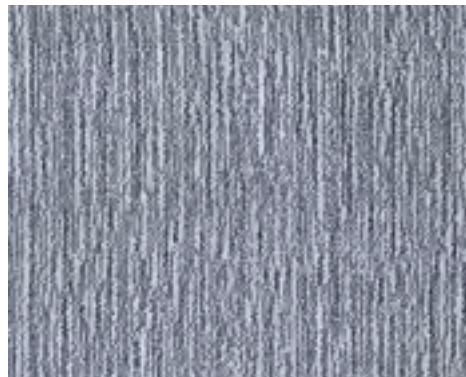
**PT60/0003**

Sand Bar



**PT60/0004**

Oyster



**PT60/0005**

Moondust

# MOSAIC

---

**BRAND**

Purity®

**PILE**

100% Pure Wool

**CONSTRUCTION**

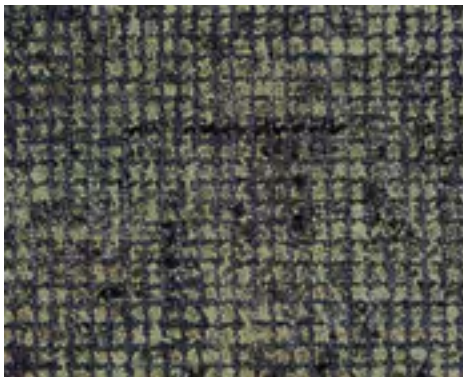
Hand-Tufted Loop Pile

**PATTERN REPEAT**

Random Repeat in Both Width and Length

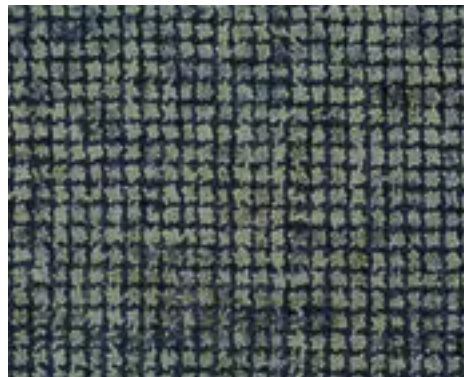
**WIDTH**

15'



**PT51/0001**

Topaz



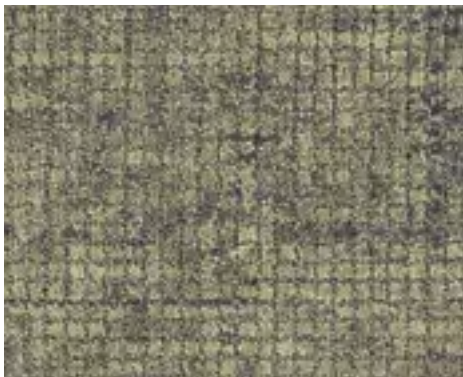
**PT51/0002**

Gemstone



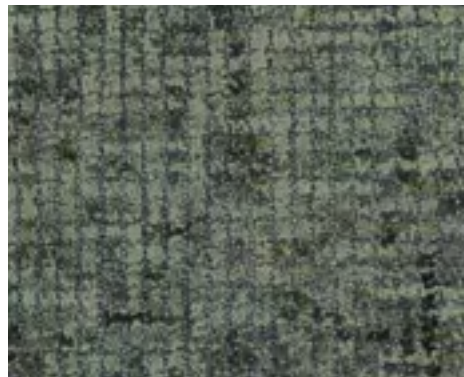
**PT51/0003**

Wheatfield



**PT51/0004**

Moondust



**PT51/0005**

Forest

# PAPYRUS

---

**BRAND**

*Purity®*

**PILE**

*100% Undyed Natural Wool*

**WEAVE**

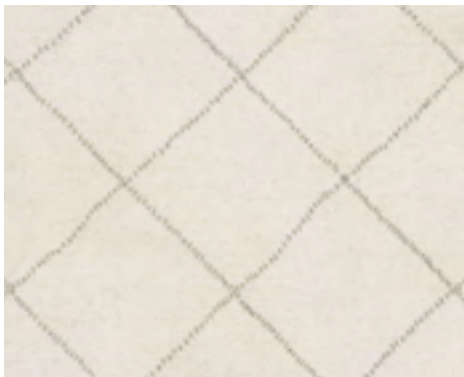
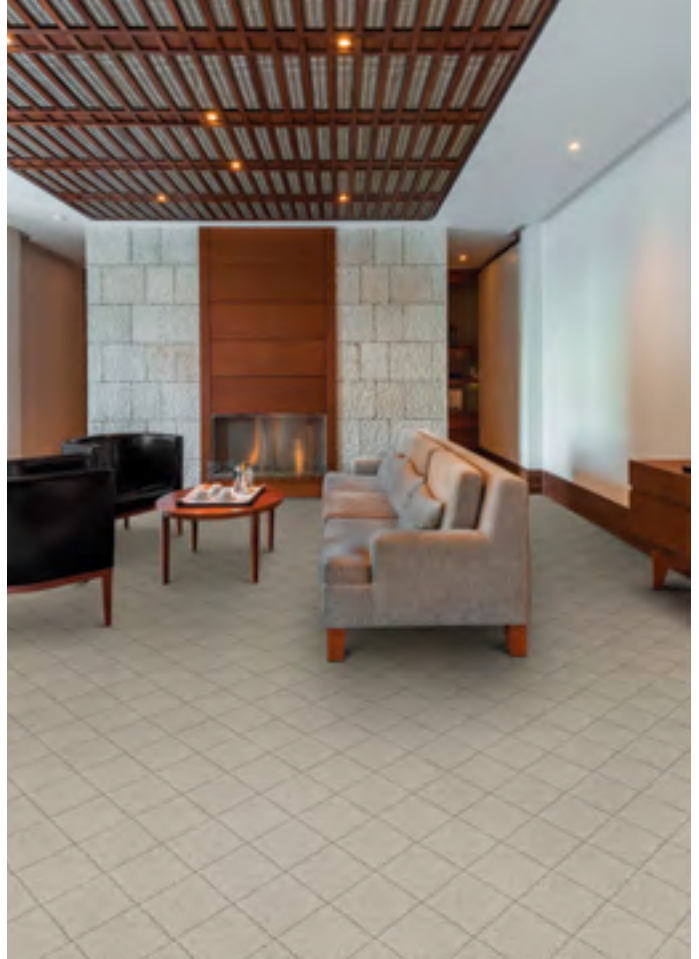
*Hand-Loomed Cut-Pile*

**PATTERN REPEAT**

*10.28" W x 10.28" L (Straight Match)*

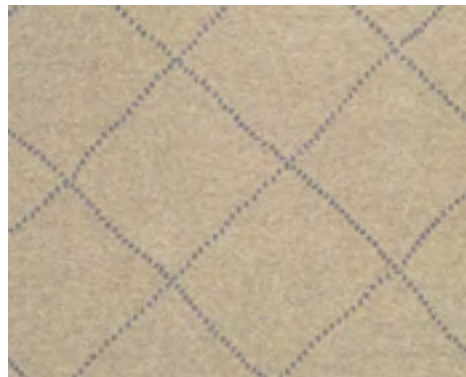
**WIDTH**

*15'*



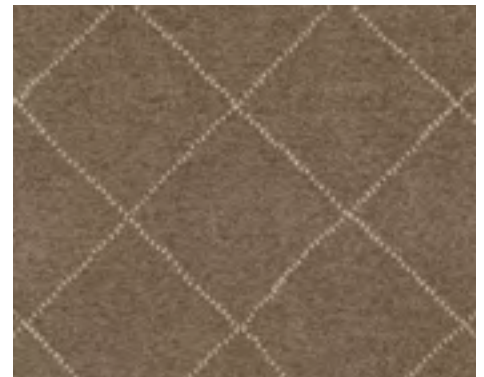
**PT34/0001**

Ivory



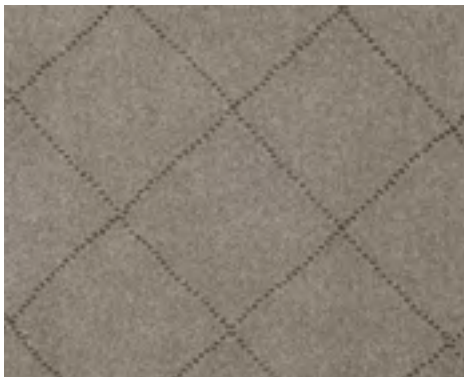
**PT34/0002**

Beige



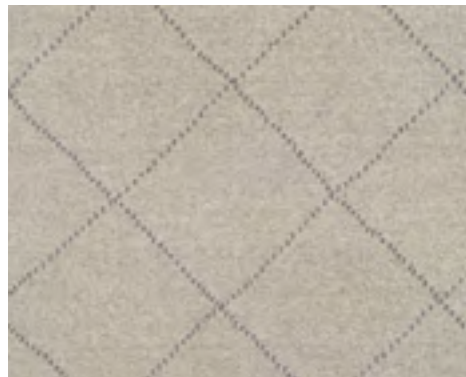
**PT34/0003**

Mink



**PT34/0004**

Pewter



**PT34/0005**

Steel



# POPLAR

---

**BRAND**

*Purity®*

**PILE**

*100% Pure New Zealand Wool*

**WEAVE**

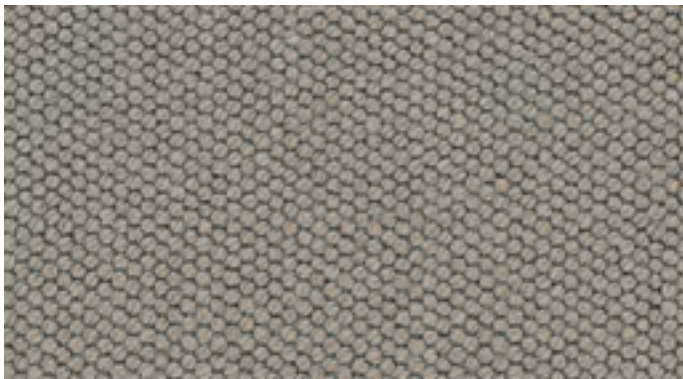
*Hand-Loomed Loop Pile*

**PATTERN REPEAT**

*No Repeat*

**WIDTH**

*15'*



**PT37/0001**

Cocoa Nib



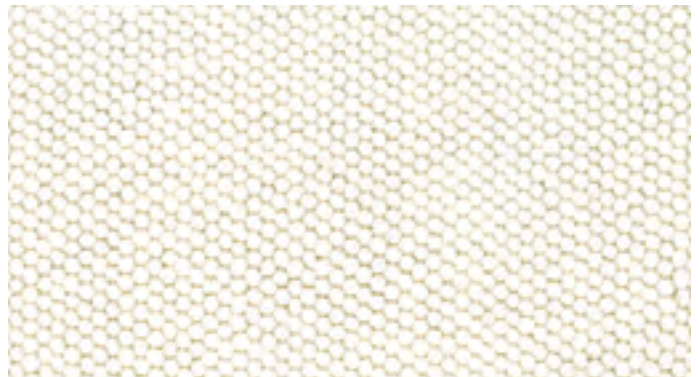
**PT37/0002**

Latté



**PT37/0003**

Almond Brittle



**PT37/0004**

Marshmallow

# SEQUOIA

---

**BRAND**

*Purity®*

**PILE**

*100% Pure New Zealand Wool*

**WEAVE**

*Hand-Loomed Loop Pile*

**PATTERN REPEAT**

*No Repeat*

**WIDTH**

*15'*



**PT36/0001**

Cocoa Nib



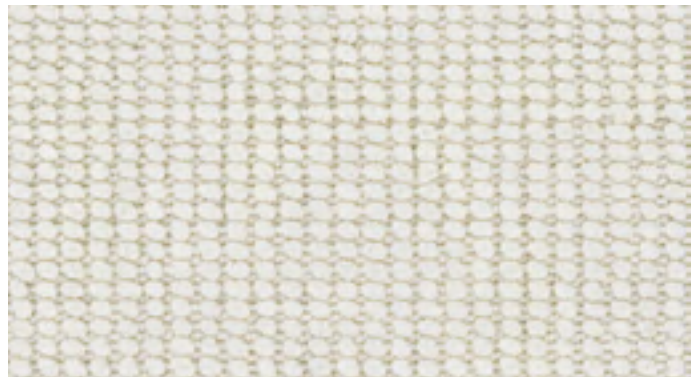
**PT36/0002**

Latté



**PT36/0003**

Almond Brittle



**PT36/0004**

Marshmallow

# VELVET

---

**BRAND**

*Purity®*

**PILE**

*100% Pure Wool*

**WEAVE**

*Hand-Loomed Cut-Pile*

**PATTERN REPEAT**

*No Repeat*

**WIDTH**

*13'2" (4 Meters)*



**2650/0001**

Oatmeal



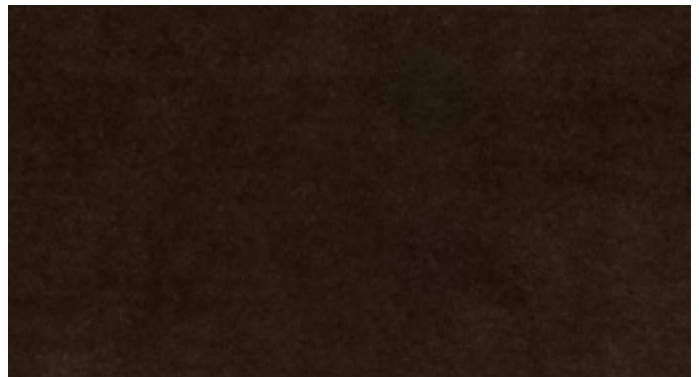
**2650/0002**

Barley



**2650/0003**

Steel Grey



**2650/0004**

Chocolate



---

**BROADLOOM SPECIAL BUYS**

TWO EXECUTIVE DRIVE, FORT LEE, NEW JERSEY 07024 • 800.223.6186 • COURISTAN.COM

---

WALL-TO-WALL CARPET • AREA RUGS • ROLL RUNNERS • CUSTOM RUGS



6/23/22