



COURISTAN®

July-October  
2022

Couri-er

## MOUNT KENYA

**BRAND:** Creations™, **PILE:** 65% Heat-Set Courtron™ Polypropylene and 35% Shrink Polyester

**WEAVE:** Face-To-Face Woven Wilton High/Low Cut-Pile, **WIDTH:** 13'2" (4 Meters)

*Available in:* Blue/Ivory (shown), Grey/Ivory and Beige/Ivory





# OUTDOOR/INDOOR BROADLOOM

CREATIONS™ BRAND INTRODUCTIONS

## NEVIS



CBN5/0008 Coastal Breeze



CBN5/0001 Tidal Lagoon



CBN5/0002 Sea Oats



CBN5/0006 Harbor Lights

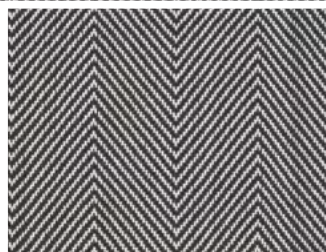


CBN5/0007 Morning Sun

**BRAND:** Creations™, **PILE:** 100% Courtron™ Polypropylene

**WEAVE:** Structured Flatwoven, **WIDTH:** 13'2" (4 Meters)

*Available in:* Tidal Lagoon, Sea Oats, Harbor Lights, Morning Sun and Coastal Breeze (shown)



CBLB/0001 Black



CBLB/0002 Navy



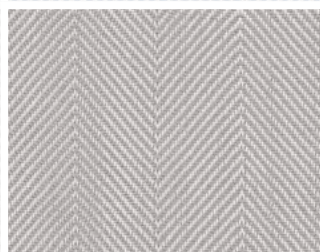
CBLB/0003 Blue



CBLB/0004 Terra-Cotta



CBLB/0006 Beige



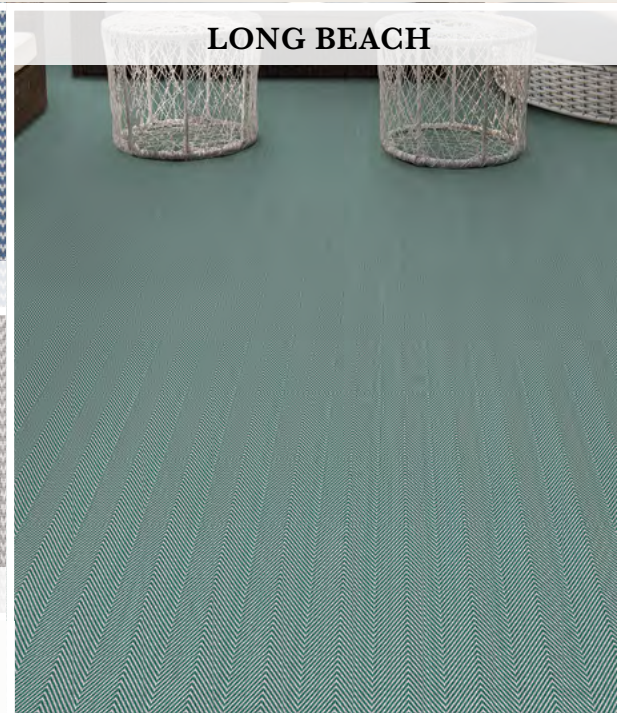
CBLB/0007 Grey

**BRAND:** Creations™, **PILE:** 100% Courtron™ Polypropylene

**WEAVE:** Hand-Loomed Flatweave, **WIDTH:** 16'4" (5 Meters)

*Available in:* Black, Navy, Blue, Terra-Cotta, Teal (shown), Beige and Grey

## LONG BEACH



CBLB/0005 Teal



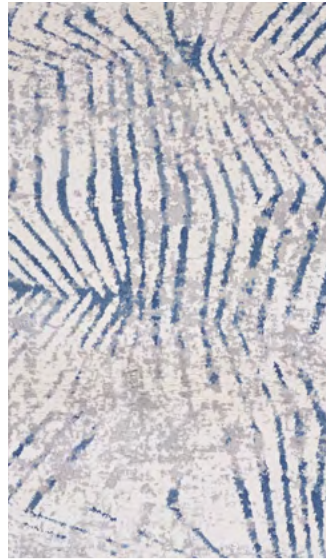
# RESIDENTIAL BROADLOOM

CREATIONS™ BRAND INTRODUCTIONS

## MOUNT FUJI



CBMF/0003 Beige/Ivory



CBMF/0001 Blue/Ivory



CBMF/0002 Grey/Ivory



CBMF/0003 Beige/Ivory

**BRAND:** Creations™

**PILE:** 65% Heat-Set Courtron™ Polypropylene and 35% Shrink Polyester

**WEAVE:** Face-To-Face Woven Wilton High/Low Cut-Pile **WIDTH:** 13'2" (4 Meters)



CBME/0001 Blue/Ivory



CBME/0002 Grey/Ivory



CBME/0003 Gold/Ivory

**BRAND:** Creations™

**PILE:** 65% Heat-Set Courtron™ Polypropylene and 35% Shrink Polyester

**WEAVE:** Face-To-Face Woven Wilton High/Low Cut-Pile **WIDTH:** 13'2" (4 Meters)

## MOUNT ETNA

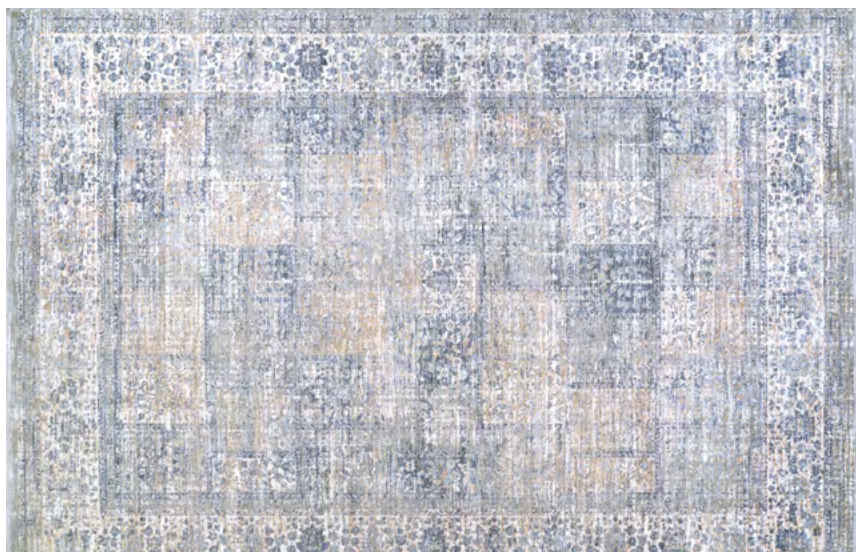


CBME/0002 Grey/Ivory

# NEW AREA RUG INTRODUCTIONS



6797/7194 PERSIAN TILES/PEWTER-MODERN BEIGE



6798/6491 PERSIAN GARDEN/PEWTER-MODERN BEIGE

## COUTURE COLLECTION

100% SPACE-DYED POLYESTER

CROSS-WOVEN ON WILTON LOOMS FOR A FULL RANGE OF COLORS AND A UNIQUE ABRASH EFFECT

TRADITIONAL CHOBI-INSPIRED DESIGNS ELEGANTLY COLORED IN A SOFT, YET VIBRANT PALETTE

PILE HEIGHT: .275" | POWER-LOOMED IN TURKEY

*Available in 7 Area Rugs*

**SIZES** | 2' x 3'7", 3'9" x 5'5", 5'3" x 7'6",  
7'10" x 10'9", 9'10" x 13'9",  
2'2" x 8'11" Runner, 2'7" x 12' Runner



## HALLI COLLECTION

100% MODIFIED POLYESTER, CROSS-WOVEN ON WILTON LOOMS ALLOWING FOR UP TO 72 COLORS PER DESIGN

500,000 POINTS OF YARN PER SQUARE METER

MODERN CLASSIC DESIGNS IN A MULTITUDE OF COLORS, COTTON BACKING



H840/1102 MODERN EDGE/SKY BLUE-MULTI

## SCANDIA COLLECTION

100% PURE WOOL

FEATURING A CASUAL, TEXTURED STRIPED PATTERN ENHANCED IN AN EARTH-ENRICHED COLOR PALETTE

ALL LOOP PILE PROVIDES ADDED COMFORT AND WARMTH

PERFECT FOR DENS, HOME OFFICES AND CASUAL LIVING ROOMS

PILE HEIGHT: .31"

HAND-CRAFTED IN INDIA

*Available in 3 Area Rugs*

**SIZES** | 5'x 8', 6'x 9', 8'x 10', 9'x 12'



## MARBLEHEAD COLLECTION

80% HEAT-SET COURTRON™ POLYPROPYLENE / 20% SHRINK POLYESTER

EMULATING BEAUTIFUL, YET BOLD MARBLE FLOOR DESIGNS

SHARP APPEAL WILL PROVIDE A FOCAL POINT TO ANY SETTING

PILE HEIGHT: .354" | POWER-LOOMED IN TURKEY | *Available in 11 Area Rugs*

**SIZES** | 3'11" x 5'11", 5'3" x 7'6", 7'10" x 10'3", 9' x 13', 2'6" x 7'10" Runner



## KASHIMAR COLLECTION

SEMI-WORSTED NEW ZEALAND WOOL, FACE-TO-FACE WILTON WOVEN,

LOCKED-IN-WEAVE AND CRYSTAL-POINT FINISH, 25-YEAR LIMITED WARRANTY

PILE HEIGHT: .28" | POWER-LOOMED IN BELGIUM | *Available in 4 Area Rugs*

**SIZES** with fringe | 2'2" x 4'9", 4'6" x 6'9", 5'3" x 7'9", 6'6" x 10'1", 7'10" x 11'2", 9'10" x 14'1", 2'2" x 9'3" Runner



PILE HEIGHT: .236"  
POWER-LOOMED IN TURKEY

*Available in 8 Area Rugs*

**SIZES** with fringe | 5'3" x 7'6", 8' x 10', 8'6" x 13'6", 9' x 12', 2'6" x 8' Runner



# NEW BROADLOOM INTRODUCTIONS

## SAVANNA



**BRAND:**  
Creations™

**Available in:**  
Beige (shown),  
Blue and Grey

**PILE** | 55% Heat-Set Courtron™ Polypropylene / 45% Shrink Polyester  
**WEAVE** | Face-To-Face Woven Wilton High/Low Cut-Pile  
**WIDTH** | 13'2" (4 Meters)

## NOTE RESIDENTIAL BROADLOOM

*These products can be fabricated  
into a Custom Size Rug.*

Finishing options include the following bindings: Chenille, Cotton Fabric, Linen and Courtron™ Polypropylene, 3/8" Synthetic Binding (For Outdoor/Indoor Usage). Programmed Borders, Wool and Synthetic Serging and 2" Length Wool Fringe are also available.

Applied Backing Options Include:  
Outdoor Living, Non-Skid and Felt (Standard)

Contact your Couristan Territory Manager today in regard to our Custom Rug Online Calculator, Boards and Program.

## CASTLE ROCK



**BRAND** | Creations™  
**PILE** | 100% Heat-Set Courtron™ Polypropylene  
**WEAVE** | Face-To-Face Woven Wilton  
**WIDTH** | 13'2" (4 Meters)

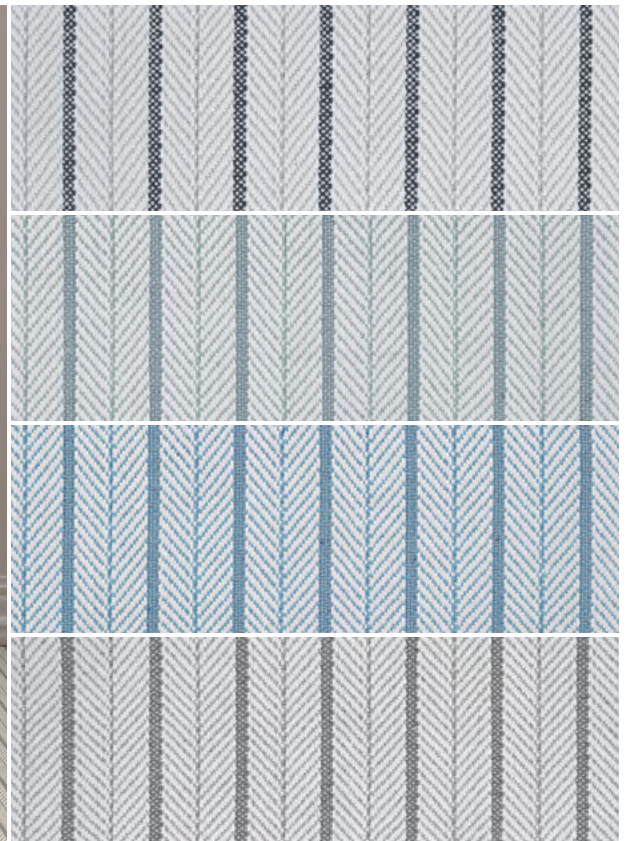
**Available in:** Slate, Marble, Flint (shown), Graphite and Sandstone



## MUSTIQUE

**BRAND** Creations™  
**PILE** 100% PET  
**WEAVE** Hand-Loomed Loop Pile  
**WIDTH** 15'

*Available in:* Sand (shown), Mineral, Surf, Teal and Grey



## KEY LARGO

**BRAND** Premiere  
**PILE** 100% Pure Wool  
**CONSTRUCTION** Hand-Tufted Loop Pile  
**WIDTH** 15'

*Available in:* Charcoal, Sandstone, Green, Sky Blue and Beige (shown)



## PALMETTO

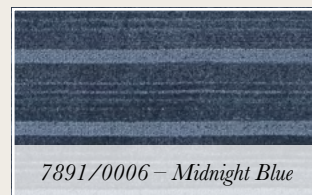
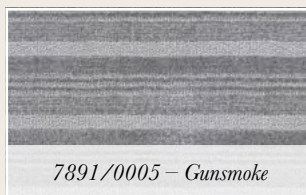
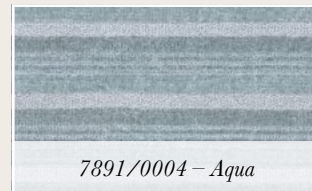
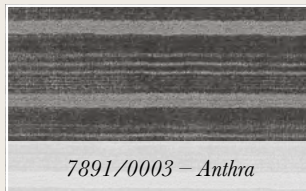
*Available in:* Silver, Blue, Seaweed (shown), Aqua, Green, Ecru and Slate

**BRAND** Premiere  
**PILE** 60% Wool / 40% ECONYL® Nylon  
**WEAVE** Hand-Loomed Loop Pile  
**WIDTH** 15'



## OAK ISLAND

**Brand: Premiere, Pile: 100% ECONYL® Nylon, Weave: Hand-Loomed Cut and Loop Pile**  
**Width: 15', Available in 7 Colors**



## EMERALD ISLE

**Brand: Premiere, Pile: 60% Wool and 40% ECONYL® Nylon, Weave: Hand-Loomed Loop Pile**  
**Width: 15', Available in 5 Colors**

