



COURISTAN®

January-April
2023

Couri-er

ZAMBIA

BRAND: Creations™, **PILE:** 100% Solution Dyed, Heat-Set Courtron™ Polypropylene

WEAVE: Woven Wilton Loop Pile, **WIDTH:** 12'

Available in: Beige, Blue, Grey, Steel and Green (shown)





AREA RUG COLLECTIONS

NEW INTRODUCTIONS

NOSTALGIA COLLECTION

100% Polyester, Cross-Woven on Wilton Looms For a Unique Appearance of Multi-Colors and a Dense Pile Over 500,000 Points Of Yarn Per Square Meter, Watercolor and Persian-Inspired Transitional Designs
Pile Height: .354" | Power-Loomed in Turkey | *Available in 6 Area Rugs*
SIZES: 5'3" x 7'6", 6'6" x 9'6", 7'10" x 10'9" and a 9'10" x 13'1"



NS01/1301 - Persian Tabriz/Antique Cream



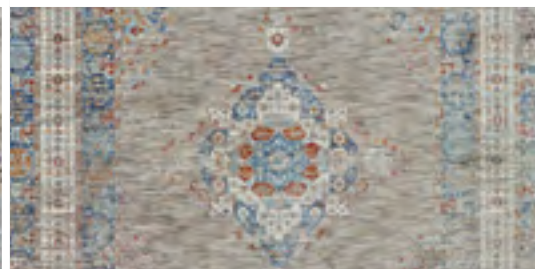
NS02/1401 - Antique Oushak/Denim



NS04/1405 - Mystic/Denim-Tawny



NS05/1405 - Serapi/Denim-Tawny



NS06/0514 - Hamadan/Tawny-Denim

NATURALISTIC™ COLLECTION

90% Courtron™ Polypropylene and 10% Polyester, Structured Flatwoven Construction, Suitable For Outdoor/Indoor Use
Tribal Patterns Enhanced in Natural Tones, Fringe Incorporated in Each Area Rug
Pile Height: No Pile (Flat Weave) | Power-Loomed in Turkey | *Available in 4 Area Rugs*
SIZES: 5'3" x 7'6", 6'6" x 9', 7'10" x 10', 5'3" & 7'10" Rounds and a 2'7" x 9'10" Runner



3701/1001 - Moroccan/Natural-Brown



3702/1002 - Sonoran/Natural-Charcoal



3703/1003 - Rattan/Natural-Cream



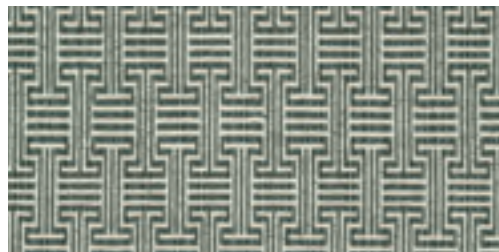
3704/1001 - Adobe/Natural-Brown





RESIDENTIAL BROADLOOM

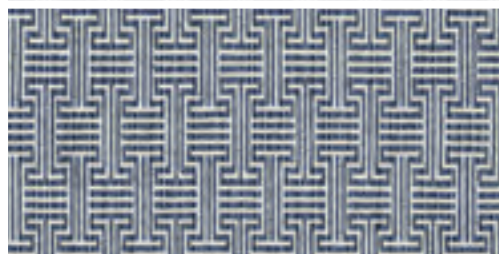
PREMIERE BRAND INTRODUCTIONS



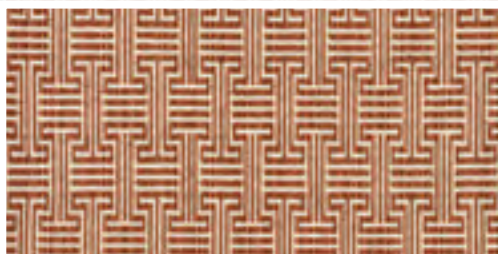
VILLA CARLOTTA - *Forest*



VILLA CARLOTTA - *Blue Stone*



VILLA CARLOTTA - *Navy*

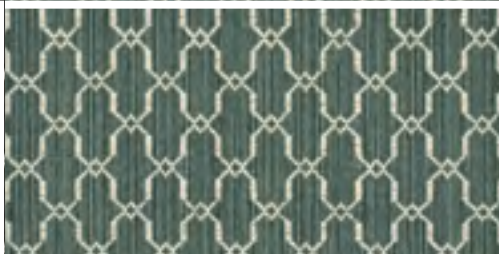


VILLA CARLOTTA - *Rust*

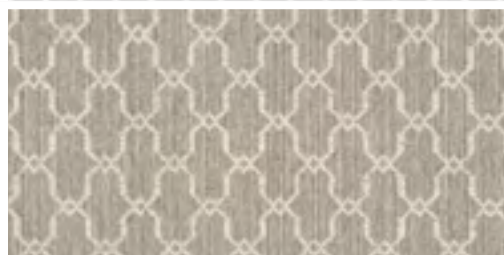
BRAND: Premiere, **PILE:** 100% Pure Wool
WEAVE: Hand-Loomed Loop Pile, **WIDTH:** 15'
Available in: Onyx (shown), Forest, Taupe, Blue Stone,
Spruce, Aqua, Granite, Navy and Rust



VILLA D'ESTE - *Onyx*



VILLA D'ESTE - *Forest*



VILLA D'ESTE - *Taupe*

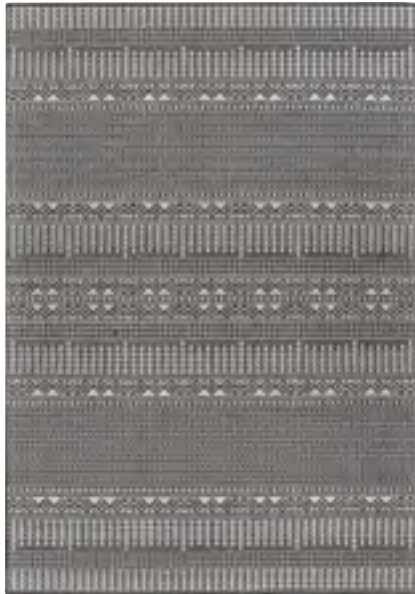
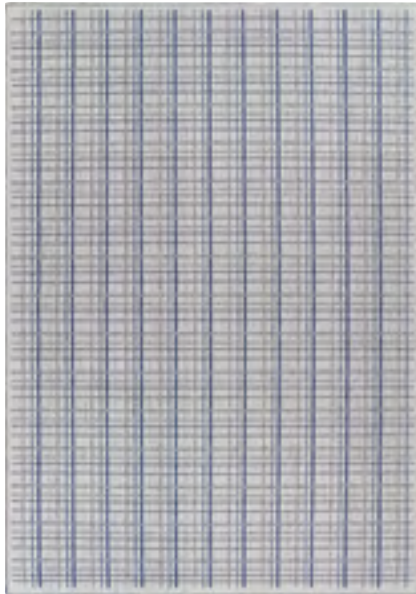


VILLA D'ESTE - *Spruce*

BRAND: Premiere, **PILE:** 100% Pure Wool
WEAVE: Hand-Loomed Loop Pile, **WIDTH:** 15'
Available in: Onyx, Forest, Taupe, Spruce, Aqua,
Blue Stone, Granite, Navy (shown) and Rust



NEW AREA RUG INTRODUCTIONS



EVERHOME™ COLLECTION

100% COURTRON™ POLYPROPYLENE
STRUCTURED FLATWOVEN CONSTRUCTION SUITABLE FOR OUTDOOR/INDOOR USE
UV STABILIZED; MOLD/MILDEW/WATER RESISTANT
GEOMETRIC, TROPICAL AND TRANSITIONAL DESIGNS
PILE HEIGHT: NO PILE (FLAT WEAVE) | POWER-LOOMED IN TURKEY

Available in 5 Area Rugs

SIZES | 5'3" x 7'6", 6'6" x 9'6", 7'10" x 10'9" and a 9'2" x 12'5"



DOLCE COLLECTION

100% FIBER-ENHANCED COURTRON™ POLYPROPYLENE WITH DURABLE POLYESTER, A STRUCTURED TAPESTRY CONSTRUCTION
SUITABLE FOR OUTDOOR/INDOOR USE
UV STABILIZED; MOLD/MILDEW/WATER RESISTANT



DREAMSCAPE COLLECTION

100% POLYESTER, MACHINE WOVEN BASE

FAUX RABBIT FUR SOFTNESS

DIGITALLY PRINTED ABSTRACT AND WATERCOLOR DESIGNS

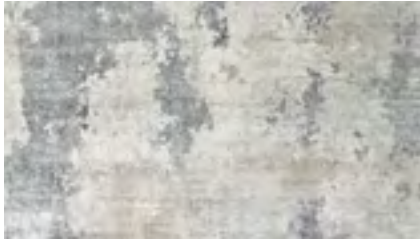
HIGHLIGHTED IN A COMBINATION OF FRESH AND SOOTHING COLORS

PILE HEIGHT: .275"

MADE IN CHINA

Available in 4 Area Rugs

SIZES | 5' x 8'
8' x 11'
2'6" x 8' Runner



GYPSY COLLECTION

100% HEAT-SET COURTRON™ POLYPROPYLENE, SOFT, LOW PILE

CROSS-WOVEN ON WILTON LOOMS

EACH TRADITIONAL AND CONTEMPORARY DESIGN IS HARMONIZED IN A CAREFULLY SEQUENCED PALETTE OF UP TO 48 MODERN HUES

PILE HEIGHT: .354" | POWER-LOOMED IN TURKEY | *Available in 14 Area Rugs*

SIZES | 3'6" x 5'6", 5'3" x 7'6", 8' x 10'9", 2'3" x 7'6" Runner



EASTON COLLECTION

100% HEAT-SET COURTRON™ ULTRA-FINE POLYPROPYLENE

FACE-TO-FACE WILTON WOVEN

DESIGNS ARE CREATED USING A MULTI POINT AND LOOM-CARVED TECHNIQUE

SOFT LUXURIOUS FINISH IN EXCESS OF A MILLION POINTS OF YARN PER SQUARE METER

PILE HEIGHT: .35" | POWER-LOOMED IN BELGIUM | *Available in 27 Area Rugs*

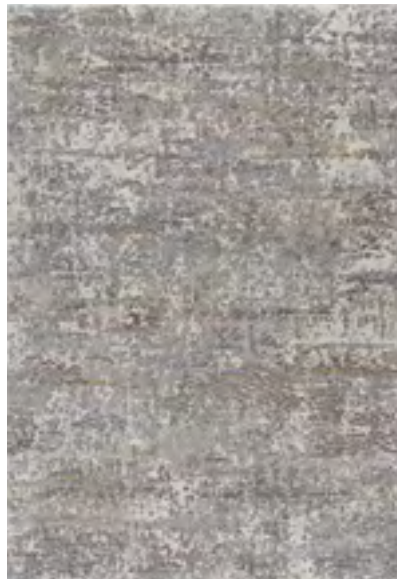
SIZES | 2' x 3'7", 3'11" x 5'3", 5'3" x 7'6", 6'6" x 9'6",
7'10" x 11'2", 9'2" x 12'5", 2'7" x 7'10" Runner



PILE HEIGHT: NO PILE (FLAT WEAVE)
POWER-LOOMED IN BELGIUM

Available in 24 Area Rugs

SIZES | 2'3" x 3'11", 4' x 5'10", 5'3" x 7'6", 8'1" x 11'2",
2'3" x 7'10" Runner



NEW BROADLOOM INTRODUCTIONS

PINEAPPLE GROVE



BRAND:
Premiere

Available in:
Grey,
Multi (shown),
Platinum, Blue,
and Graphite

PILE | 100% Pure Wool
WEAVE | Hand-Loomed Loop Pile
WIDTH | 15'

NOTE

RESIDENTIAL BROADLOOM

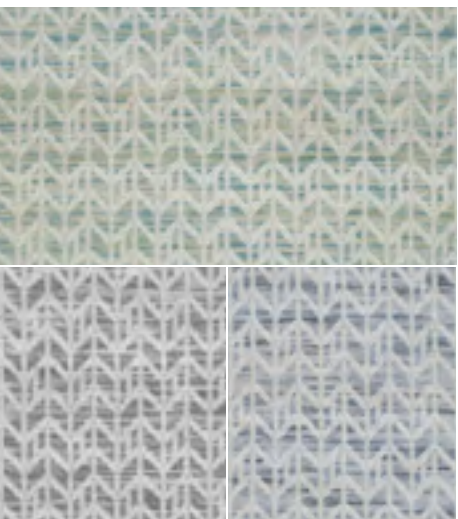
These products can be fabricated into a Custom Size Rug.

Finishing options include the following bindings: Chenille, Cotton Fabric, Linen and Courtron™ Polypropylene (For Outdoor/Indoor Usage), 3/8" Synthetic Binding (For Outdoor/Indoor Usage), Wool and Synthetic Serging, and 2" Length Fringe are also available.

Applied Backing Options Include: Outdoor Living, Non-Skid and Felt (Standard)

Contact your Couristan Territory Manager today in regard to our Custom Rug Online Calculator, Boards and Program.

PALM SPRINGS



BRAND | Premiere
PILE | 100% Pure Wool
WEAVE | Hand-Loomed Loop Pile
WIDTH | 15'

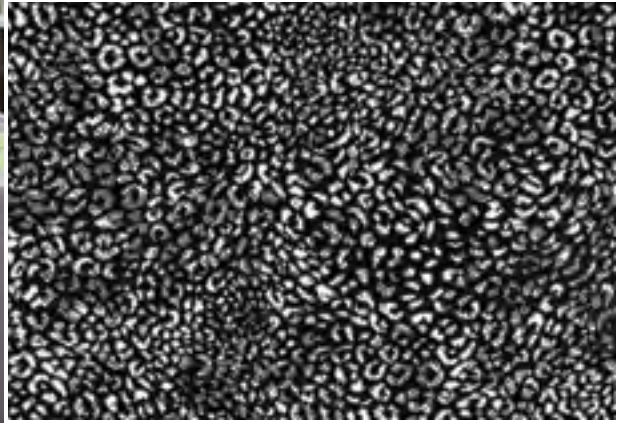
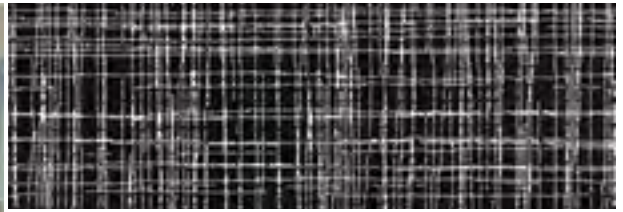
Available in: Taupe, Green and Ivory/Blue (shown)



BLACK & WHITE II

BRAND Creations™
PILE 100% Heat-Set Courtron™ Polypropylene
WEAVE Face-To-Face Woven Wilton
WIDTH 13'2" (4 Meters)

Available in: Leopard/Ebony, Scroll/Ebony and Matrix/Ebony (shown)



OLDE CHATHAM

BRAND Creations™
PILE 100% Heat-Set Courtron™ Polypropylene
WEAVE Face-To-Face Woven Wilton
WIDTH 13'2" (4 Meters)

Available in: Navy (shown), Platinum, Charcoal and Sky



LUGANO

Available in: Sage, Cream, Beige, Black and Navy

BRAND Premiere
PILE 100% Pure Wool
WEAVE Hand-Loomed Cut and Loop Pile
WIDTH 15'



SPRING HILL

*Brand: Premiere, Pile: 100% Pure Wool, Weave: Hand-Loomed Loop Pile
Width: 15', Available in 3 Colors*



6952/0002 – Ivory/Multi



6952/0001 – Ivory/Brown



6952/0003 – Ivory/Blue

VISIT US

UPCOMING MARKETS

Las Vegas Market

January 29 – February 2, 2023

World Market Center, Las Vegas
Building B, **Showroom B360, 3rd Floor**

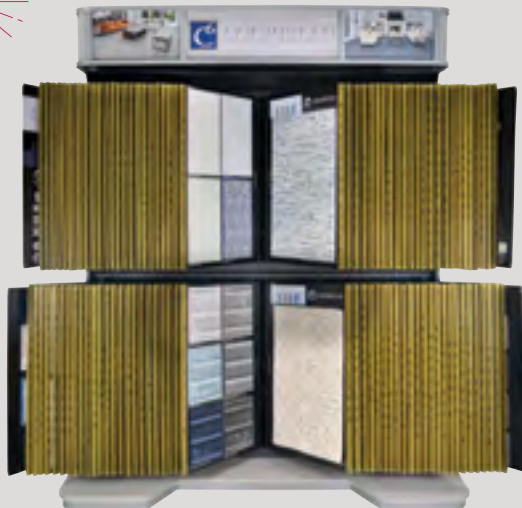
The International Surface Event

January 31 – February 2, 2023

Mandalay Bay Convention Center, Las Vegas
Booth #2823

STUDIO C UNIVERSAL II

DISPLAY: 96 – 24" x 36" Product Boards



UNIVERSAL BOUTIQUE

DISPLAY: 40 – 24" x 36" Product Boards

