

Premiere Brand

NOVELLA - YAKIMA

Volume 2 of 2

2023



COURISTAN[®]
Wall-to-Wall Carpet • Custom Area Rugs



PALM SPRINGS 6158/0001 Indigo - Featured on Page 7



Honoring our 97-year old heritage in the floor covering industry, the Premiere brand represents the pinnacle in residential carpeting and custom area rugs, appealing to a broad spectrum of lifestyles. Predominantly showcasing wool, blends containing natural and synthetic fibers, nylon and heat-set Courtron™ polypropylene products, the hallmark of this brand is its innovation within traditional, transitional, contemporary and casual appearances. This designer-driven product line is built on quality, superior comfort, durability and fashion, and is one of the most recognizable product lines in the industry. Offering a world of decorative fashions, textures and color options for the floor, Premiere's decorative patterns are enhanced through Axminster, Wilton, flatwoven, hand-loomed and tufted constructions that feature loop, cut and loop, multi-level loop and cut-pile appearances. Offering a world of decorating options and flexibility, there is no other brand in today's carpet industry that meets the consumer demand for high-quality, durable products.



CUSTOM RUG
PROGRAM

** Note: These Products can be fabricated into Custom Size Rugs. Available Finishing Options include, Wool Serging, Synthetic Serging, Chenille Bindings, Cotton Fabric Bindings, Linen Bindings, Courtron™ Polypropylene Bindings (For Outdoor/Indoor Usage) and 3/8" Synthetic Binding (For Outdoor/Indoor Usage).*

Available applied Backing Options include, Non-Skid, Felt, Outdoor Living Cushion (For Outdoor/Indoor Usage), No Backing (Must Be Specified).





Table of Contents

1	Novella	21	Rainier	45	Somersworth
2	Oak Island <i>New</i>	22	Razzle	46	Spring Hill <i>New</i>
3	Ocean Ridge <i>New</i>	23	Recoleta	47	Stone Harbor
4	Ogee	24	Redondo Beach	48	Stone Harbor II <i>New</i>
5	Okavango	25	Regal Elegance	49	Sweet Treats
6	Osborne	26	Regal Estate	50	Teton
7	Palm Springs <i>New</i>	27	Regal Palace	51	Textured Weave
8	Palmetto <i>New</i>	28	Ridge View	52	Tibet
9	Paloma II	29	Riley	53	Times Square
10	Patra	30	Royalax II® Collection	54	Tropic Isle <i>New</i>
11	Pensacola <i>New</i>	31	Royalax II® Blue Collection	55	Tully
12	Peyton	32	Royalax II® Cumberland Falls	56	Victoria Falls
13	Phoenician II Collection Leaf Trellis II	33	Royalax II® New Keshan	57	Villa Carlotta <i>New</i>
14	Phoenician II Collection French Knot II	34	Royalax II® Scroll Stria	58	Villa D'Este <i>New</i>
15	Phoenician II Collection Double Lattice	35	Royalax II® Tartan	59	White Oak
16	Phoenician Stria Collection Double Lattice Stria	36	San Onofre <i>New</i>	60	Willowbrook
17	Phoenician Stria Collection Leaf Trellis Stria	37	Sandal Cove <i>New</i>	61	Wilton White Collection Corinthian
18	Pia	38	Sanibel	62	Wilton White Collection Maze
19	Pikes Peak <i>New</i>	39	Sarah	63	Wilton White Collection Diamond Weave
20	Prague	40	Sarasota	64	Wilton White Collection Basketweave
		41	Saybrook	65	Wilton White Collection Fret
		42	Seychelles	66	Yakima
		43	Sierra Madre		
		44	Siesta Key		



Novella

FIBER
73% New Zealand Wool/
27% Nylon

WEAVE
Wilton Woven Loop Pile

WIDTH
13'2" (4 Meters)

REPEAT
2" W x 2" L
(Straight Match)



SHOWN IN SETTING - 8321/0007 GRANITE



8321/0002 Ice Blue



8321/0003 Sky



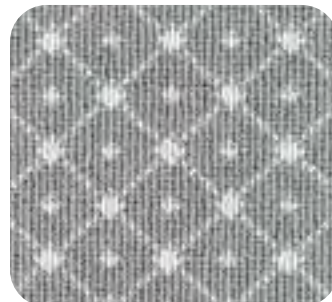
8321/0004 Blonde



8321/0005 Fog



8321/0006 Honey



8321/0007 Granite



8321/0008 Delft



8321/0009 Navy



Oak Island

FIBER
100% ECONYL® Nylon

WEAVE
Hand-Loomed
Cut and Loop Pile

WIDTH
15'

REPEAT
4" Length



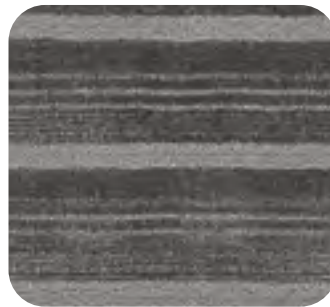
SHOWN IN SETTING - 7891/0007 CREAM



7891/0001 Silver



7891/0002 Steel



7891/0003 Anthra



7891/0004 Aqua



7891/0005 Gunsmoke



7891/0006 Midnight Blue



7891/0007 Cream



Ocean Ridge

FIBER
100% Pure Wool

CONSTRUCTION
Hand-Tufted Loop Pile

WIDTH
15'

REPEAT
26" W x 23" L
(Straight Match)



SHOWN IN SETTING - 5590/0001 CHARCOAL



5590/0001 Charcoal



5590/0002 Sandstone



5590/0003 Green



5590/0004 Sky Blue



5590/0005 Multi



Ogee

FIBER
100% Pure Wool

CONSTRUCTION
Hand-Tufted Loop Pile

WIDTH
15'

REPEAT
7" W x 9" L
(Straight Match)



SHOWN IN SETTING - 7230/0002 INDIGO



7230/0001 Cornflower



7230/0002 Indigo



7230/0003 Musk



Okavango

FIBER
100% Pure Wool

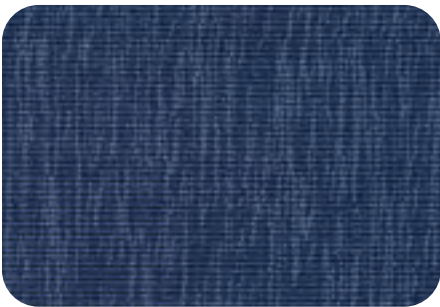
WEAVE
Woven Wilton Loop Pile

WIDTH
12'

REPEAT
No Repeat



SHOWN IN SETTING - 6701/0004 GABORONE



6701/0001 Chobe River



6701/0002 Kruger Park



6701/0003 Zambezi River



6701/0004 Gaborone



6701/0005 Kasane



Osborne

FIBER
100% Pure Wool

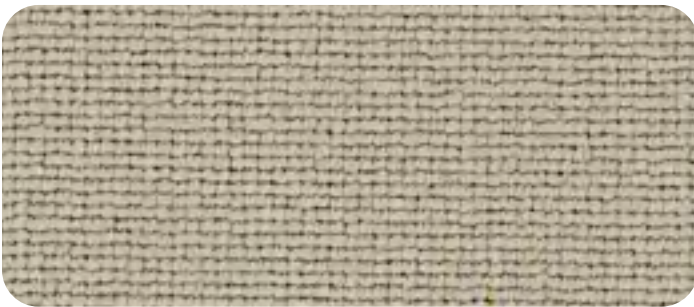
CONSTRUCTION
Tufted Loop Pile

WIDTH
13'2" (4 Meters)

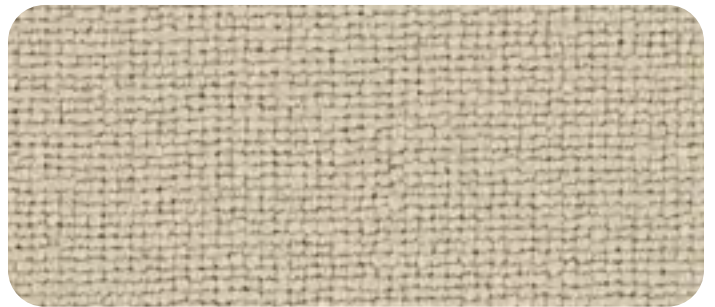
REPEAT
No Repeat



SHOWN IN SETTING - 2260/0001 PUTTY



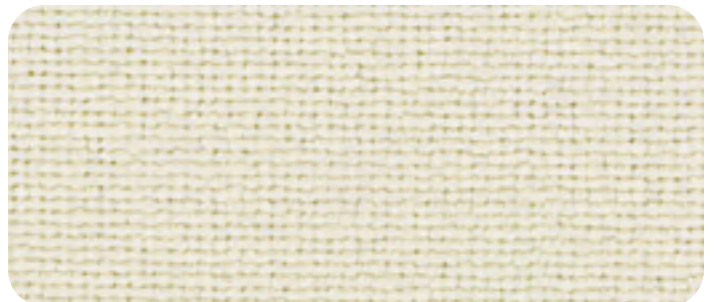
2260/0001 Putty



2260/0002 Mineral



2260/0003 Sesame



2260/0004 Alabaster



Palm Springs

FIBER
100% Pure Wool

WEAVE
Hand-Loomed Loop Pile

WIDTH
15'

REPEAT
2" W x 3" L
(Straight Match)



SHOWN IN SETTING - 6580/0003 IVORY/BLUE



6580/0001 Taupe



6580/0002 Green



6580/0003 Ivory/Blue



Palmetto

FIBER
60% Wool /
40% ECONYL® Nylon

WEAVE
Hand-Loomed Loop Pile

WIDTH
15'

REPEAT
4" W x 4" L
(Straight Match)



SHOWN IN SETTING - 6526/0003 SEAWEED



6526/0001 Silver



6526/0002 Blue



6526/0003 Seaweed



6526/0004 Aqua



6526/0005 Green



6526/0006 Ecru



6526/0007 Slate



Paloma II

FIBER
100% Pure Wool

WEAVE
Woven Wilton Loop Pile

WIDTH
13'2" (4 Meters)

REPEAT
5.86" W x 11.50" L
(Half-Drop Match)



SHOWN IN SETTING - 2901/0001 BLUE HORIZON



2901/0001 Blue Horizon



2901/0002 Sea Mist



2901/0003 Green Meadows



2901/0004 Morning Dew



Patra

FIBER
100% Pure Wool

CONSTRUCTION
Tufted Loop Pile

WIDTH
13'2" (4 Meters)

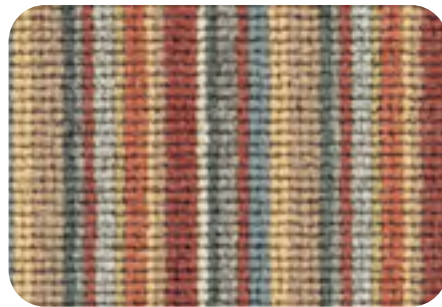
REPEAT
4" Wide



SHOWN IN SETTING - 4450/0211 NORTHERN LIGHTS



4450/0210 Quasar



4450/0211 Northern Lights



4450/0212 Peacock Plume



4450/0213 Pale Coral



4450/0215 Pulsar



Pensacola

FIBER
70% Wool/30% Polyester

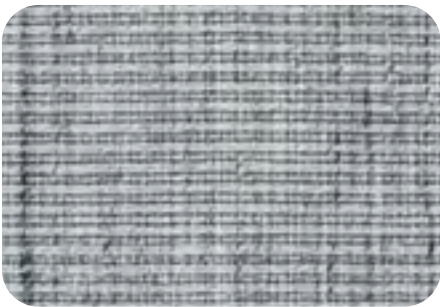
WEAVE
Hand-Loomed Loop Pile

WIDTH
15'

REPEAT
Random Repeat in
Both Width and Length



SHOWN IN SETTING - 7918/0002 MUSHROOM



7918/0001 Grey



7918/0002 Mushroom



7918/0003 Canvas



7918/0004 Beige



7918/0005 Charcoal



Peyton

FIBER
85% New Zealand Wool/
15% Nylon

WEAVE
Woven Wilton Loop Pile

WIDTH
12'6"

REPEAT
9" W x 9" L
(Straight Match)



SHOWN IN SETTING - 8227/0005 INDIGO



8227/0001 Tawny



8227/0002 Pewter



8227/0003 Mushroom



8227/0004 Cornflower



8227/0005 Indigo



8227/0006 Pepper



Phoenician II Collection | *LeafTrellis II*

FIBER
100% Pure New Zealand Wool

WEAVE
Woven Wilton Loop Pile

WIDTH
13'2" (4 Meters)

REPEAT
4.37" W x 5" L
(Half-Drop Match)



SHOWN IN SETTING - 2610/0001 ALMOND



2610/0001
Almond



2610/0002
Silver Grey



2610/0003
Butternut



2610/0004
Sea Green



2610/0005
Sea Green on White



2610/0006
Manila



2610/0007
Desert Sand



2610/0008
Wedgewood Blue



Phoenician II Collection | *French Knot II*

FIBER
100% Pure New Zealand Wool

WEAVE
Woven Wilton Loop Pile

WIDTH
13'2" (4 Meters)

REPEAT
.375" W x .5" L
(Half-Drop Match)



SHOWN IN SETTING - 2612/0007 DESERT SAND



2612/0001
Almond



2612/0002
Silver Grey



2612/0003
Butternut



2612/0004
Sea Green



2612/0005
Sea Green on White



2612/0006
Manila



2612/0007
Desert Sand



2612/0008
Wedgewood Blue



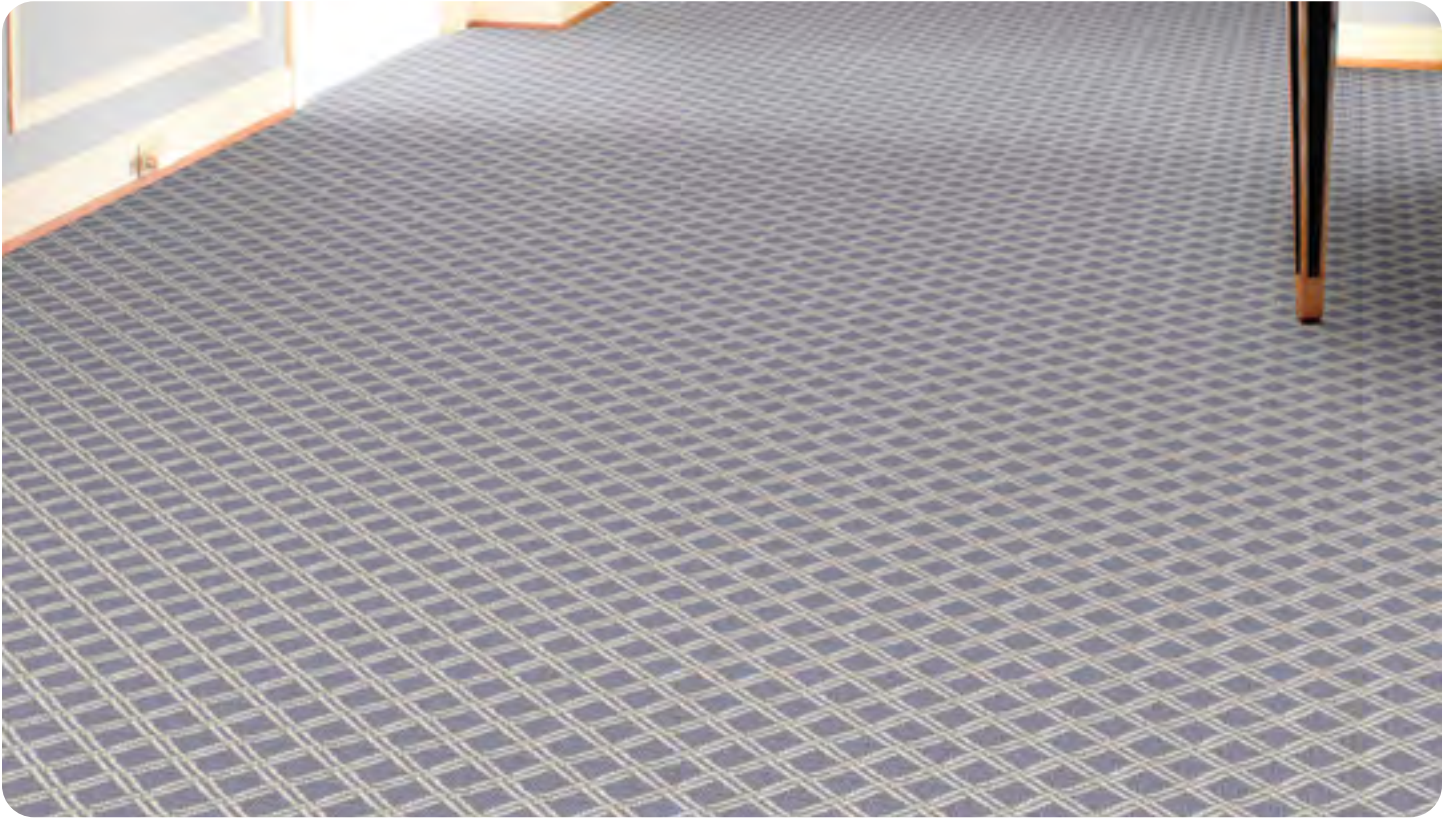
Phoenician II Collection | *Double Lattice*

FIBER
100% Pure New Zealand Wool

WEAVE
Woven Wilton Loop Pile

WIDTH
13'2" (4 Meters)

REPEAT
2.5" W x 2.75" L
(Half-Drop Match)



SHOWN IN SETTING - 2614/0008 WEDGEWOOD BLUE



2614/0001
Almond



2614/0002
Silver Grey



2614/0003
Butternut



2614/0004
Sea Green



2614/0005
Sea Green on White



2614/0006
Manila



2614/0007
Desert Sand



2614/0008
Wedgewood Blue



Phoenician Stria Collection

Double Lattice Stria

FIBER
100% Pure New Zealand Wool

WEAVE
Woven Wilton Loop Pile

WIDTH
13'2" (4 Meters)

REPEAT
2.44" W x 5.43" L
(Straight Match)



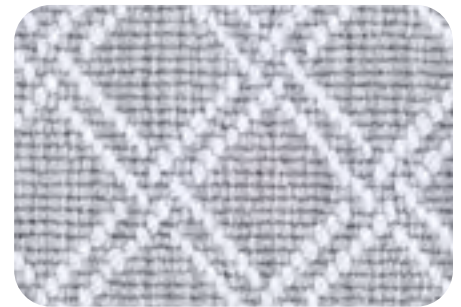
SHOWN IN SETTING - 3615/0005 DENIM



3615/0001 Pistachio



3615/0002 Ice



3615/0003 Platinum



3615/0004 Sunburst



3615/0005 Denim



3615/0006 Charcoal



Phoenician Stria Collection

Leaf Trellis Stria

FIBER
100% Pure New Zealand Wool

WEAVE
Woven Wilton Loop Pile

WIDTH
13'2" (4 Meters)

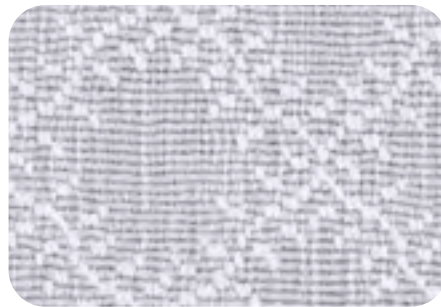
REPEAT
4.40" W x 4.88" L
(Straight Match)



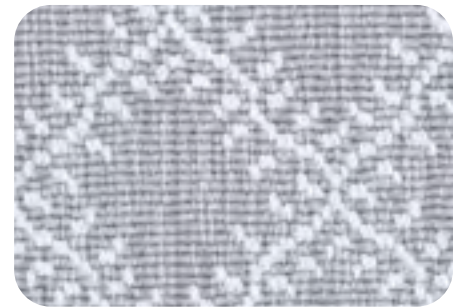
SHOWN IN SETTING - 3613/0005 DENIM



3613/0001 Pistachio



3613/0002 Ice



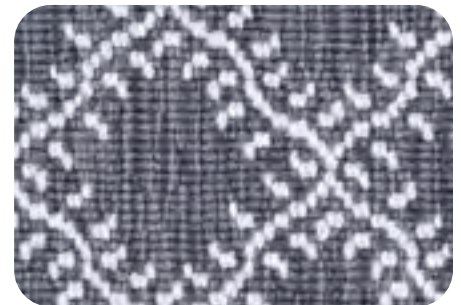
3613/0003 Platinum



3613/0004 Sunburst



3613/0005 Denim



3613/0006 Charcoal



Pia

FIBER
100% Pure New Zealand Wool

WEAVE
Woven Wilton Loop Pile

WIDTH
13'

REPEAT
5.20" W x 11.81" L
(Straight Match)



SHOWN IN SETTING - 8813/0004 POWDER BLUE



8813/0001 Almond



8813/0002 Sandlewood



8813/0003 Light Cocoa



8813/0004 Powder Blue



8813/0005 Moondust



Pikes Peak

FIBER
100% Pure Wool

CONSTRUCTION
Hand-Tufted Loop Pile

WIDTH
15'

REPEAT
8" W x 11" L
(Straight Match)



SHOWN IN SETTING - 6935/0004 POWDER BLUE



6935/0001 Brown



6935/0002 Navy



6935/0003 Green



6935/0004 Powder Blue



6935/0005 Charcoal



Prague

FIBER
100% Nylon

WEAVE
Hand-Loomed Loop Pile,
Tip-Sheared

WIDTH
15'

REPEAT
No Repeat



SHOWN IN SETTING - 9301/0006 CLAY



9301/0001
Navy



9301/0002
Taupe



9301/0003
Grey



9301/0004
Cloud



9301/0005
Celery



9301/0006
Clay



9301/0007
Wheat



Rainier

FIBER
100% Pure Wool

WEAVE
Hand-Loomed Loop Pile

WIDTH
15'

REPEAT
7" W x 7" L
(Straight Match)



SHOWN IN SETTING - 7150/0001 DENIM



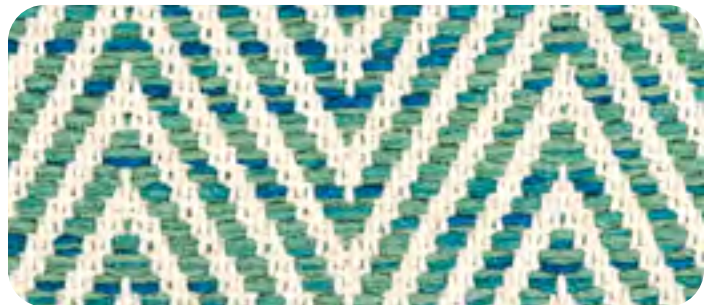
7150/0001 Denim



7150/0002 Mist



7150/0003 Fog



7150/0004 Emerald



Razzle

FIBER
100% Pure Wool

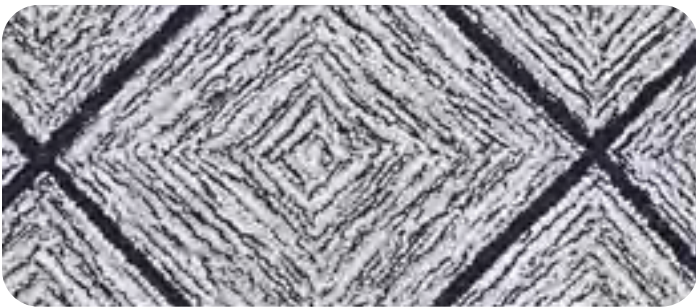
CONSTRUCTION
Hand-Tufted Loop Pile

WIDTH
15'

REPEAT
11" W x 11" L
(Straight Match)



SHOWN IN SETTING - 9104/0001 IVORY



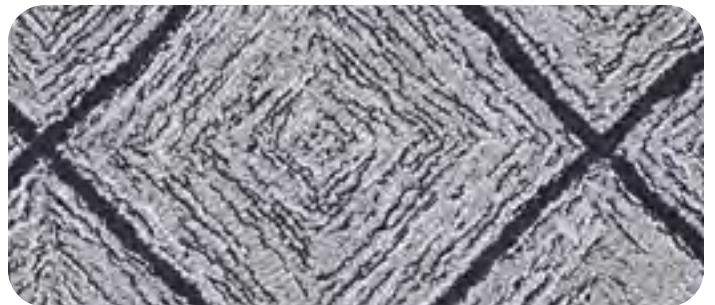
9104/0001 Ivory



9104/0002 Silver



9104/0003 Gold



9104/0004 Gray



Recoleta

FIBER
100% Pure Wool

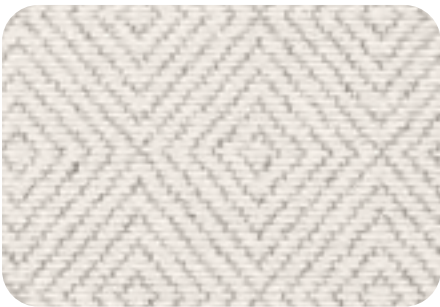
WEAVE
Hand-Loomed Loop Pile

WIDTH
15'

REPEAT
6" W x 7" L
(Straight Match)



SHOWN IN SETTING - 6730/0005 LIGHT BLUE



6730/0001 Light Grey



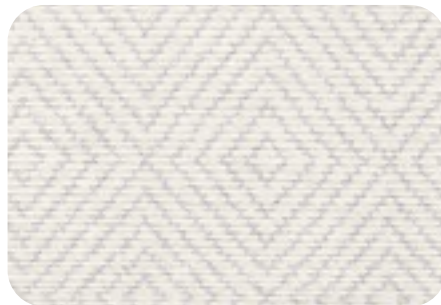
6730/0002 Onyx



6730/0003 Dark Grey



6730/0004 Sky



6730/0005 Light Blue



Redondo Beach

FIBER
100% Pure Wool

WEAVE
Hand-Loomed Loop Pile

WIDTH
15'

REPEAT
No Repeat



SHOWN IN SETTING - 6203/0001 IVORY/BLUE



6203/0001 Ivory/Blue



6203/0002 Ivory/Multi



6203/0003 Ivory/Brown



Regal Elegance

FIBER
100% ECONYL® Nylon

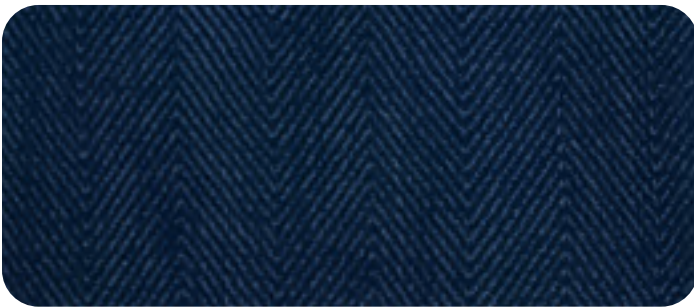
WEAVE
Hand-Loomed
Cut and Loop Pile

WIDTH
15'

REPEAT
3.1" W x 6.5" L
(Straight Match)



SHOWN IN SETTING - 6242/0004 GREY



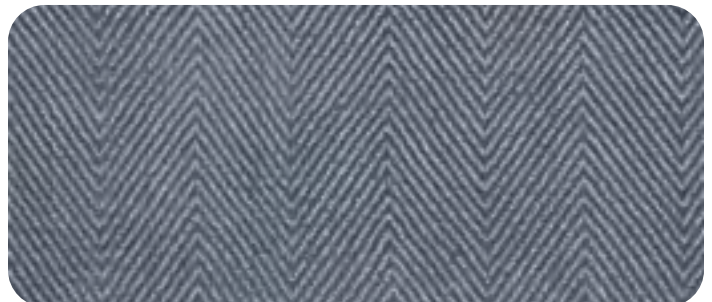
6242/0001 Sky



6242/0002 Bisque



6242/0003 Snow



6242/0004 Grey



Regal Estate

FIBER
100% ECONYL® Nylon

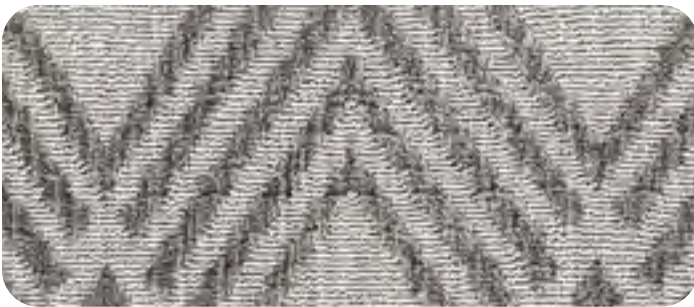
WEAVE
Hand-Loomed
Cut and Loop Pile

WIDTH
15'

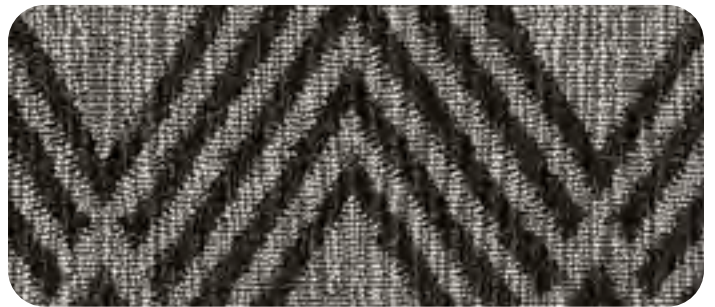
REPEAT
8" W x 14" L
(Straight Match)



SHOWN IN SETTING - 6199/0003 DARK GREY



6199/0002 Platinum



6199/0003 Dark Grey



6199/0004 Navy



Regal Palace

FIBER
100% ECONYL® Nylon

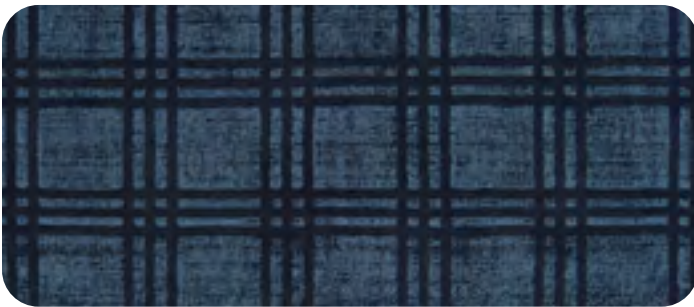
WEAVE
Hand-Loomed
Cut and Loop Pile

WIDTH
15'

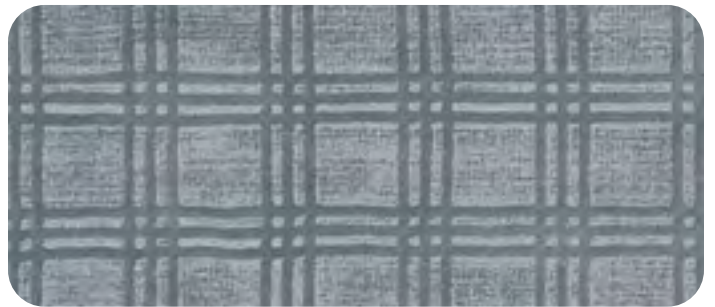
REPEAT
4.1" W x 4.1" L
(Straight Match)



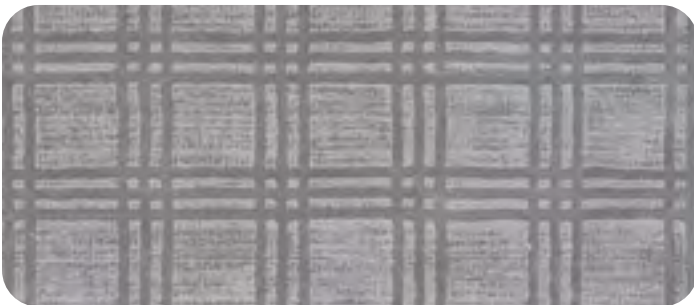
SHOWN IN SETTING - 6240/0003 GRAPHITE



6240/0001 Sky



6240/0002 Grey



6240/0003 Graphite



6240/0004 Bisque



Ridge View

FIBER
100% Pure Wool

CONSTRUCTION
Hand-Tufted Loop Pile

WIDTH
15'

REPEAT
10" W x 10" L
(Straight Match)



SHOWN IN SETTING - 3859/0005 DENIM



3859/0001 Charcoal



3859/0002 Sage



3859/0003 Ice



3859/0004 Platinum



3859/0005 Denim



Riley

FIBER
100% Pure New Zealand Wool

WEAVE
Woven Wilton Loop Pile

WIDTH
13'

REPEAT
6.22" W x 9.84" L
(Straight Match)



SHOWN IN SETTING - 8819/0003 LIGHT COCOA



8819/0001 Almond



8819/0002 Sandlewood



8819/0003 Light Cocoa



8819/0004 Powder Blue



8819/0005 Moondust



Royalax II® Collection

FIBER
80% Wool/20% Nylon

WEAVE
9-Row Axminster Cut-Pile

WIDTH
13'6"

REPEAT
Antelope-Ax 27" W x 36" L (Straight Match)
Leopard-Ax 27" W x 23.33" L (Straight Match)
Zebra-Ax 27" W x 24" L (Straight Match)
Wildcat-Ax 40.43" W x 45.56" L (Straight Match)



SHOWN IN SETTING - 8201/0002 LEOPARD-AX NATURAL



Antelope-Ax
8101/0001 Grey



Antelope-Ax
8101/0002 Natural



Leopard-Ax
8201/0001 Grey



Leopard-Ax
8201/0002 Natural



Zebra-Ax
8301/0001 Chocolate



Zebra-Ax
8301/0002 Black



Wildcat-Ax
8401/0001 Grey



Wildcat-Ax
8401/0002 Natural



Royalax II[®] Blue Collection

FIBER
80% Wool/20% Nylon

WEAVE
9-Row Axminster Cut-Pile

WIDTH
13'6"

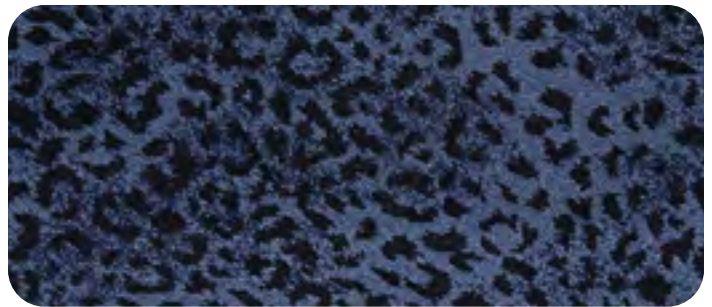
REPEAT
Antelope-Ax 27" W x 36" L (Straight Match)
Leopard-Ax 27" W x 23.33" L (Straight Match)
Zebra-Ax 27" W x 24" L (Straight Match)
Wildcat-Ax 40.43" W x 45.56" L (Straight Match)



SHOWN IN SETTING - 8101/0003 ANTELOPE-AX BLUE



Antelope-Ax
8101/0003 Blue



Leopard-Ax
8201/0003 Blue



Zebra-Ax
8301/0003 Blue



Wildcat-Ax
8401/0003 Blue



Royalax II[®] Cumberland Falls

FIBER
80% Wool/20% Nylon

WEAVE
9-Row Axminster Cut-Pile

WIDTH
13'2" (4 Meters)

REPEAT
39" W x 39" L
(Half-Drop Match)



SHOWN IN SETTING - 8570/0003 DENIM



8570/0001 Onyx



8570/0002 Shale



8570/0003 Denim



Royalax II[®] New Keshan

FIBER
80% Wool/20% Nylon

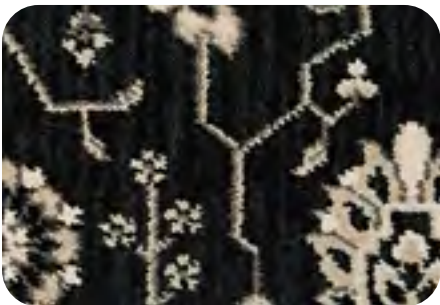
WEAVE
9-Row Axminster Cut-Pile

WIDTH
13'2" (4 Meters)

REPEAT
20" W x 38" L
(Straight Match)



SHOWN IN SETTING - 8650/0001 EBONY SKY



8650/0001 Ebony Sky



8650/0002 Robin's Egg



8650/0003 Royal Blue



8650/0004 Green Leaf



8650/0005 London Fog



Royalax II[®] Scroll Stria

FIBER
80% Wool/20% Nylon

WEAVE
9-Row Axminster Cut-Pile

WIDTH
13'2" (4 Meters)

REPEAT
39" W x 39" L
(Straight Match)



SHOWN IN SETTING - 8850/0002 ROBIN'S EGG



8850/0001 Ebony Sky



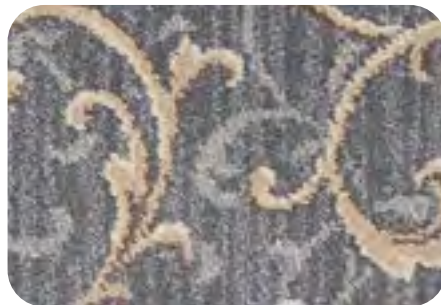
8850/0002 Robin's Egg



8850/0003 Royal Blue



8850/0004 Green Leaf



8850/0005 London Fog



Royalax II[®] Tartan

FIBER
80% Wool/20% Nylon

WEAVE
9-Row Axminster Cut-Pile

WIDTH
13'2" (4 Meters)

REPEAT
19.7" W x 19.6" L
(Straight Match)



SHOWN IN SETTING - 8501/0004 CAPE BLUE



8501/0001 Scottish Red



8501/0002 Scottish Green



8501/0003 Driftwood



8501/0004 Cape Blue



8501/0005 Winter Fog



San Onofre

FIBER
100% Pure Wool

WEAVE
Hand-Loomed Loop Pile

WIDTH
15'

REPEAT
5.5" Wide



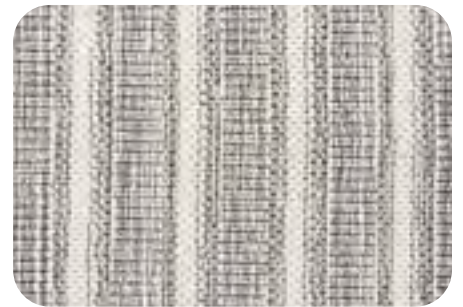
SHOWN IN SETTING - 5720/0004 SILVER



5720/0001 Denim



5720/0002 Forest



5720/0003 Granite



5720/0004 Silver



5720/0005 Natural



Sandal Cove

FIBER
100% Pure New Zealand Wool

CONSTRUCTION
Tufted Loop Pile

WIDTH
13'2" (4 Meters)

REPEAT
No Repeat



SHOWN IN SETTING - 3942/0002 CHALK



3942/0001 Sand



3942/0002 Chalk



3942/0003 Nickel



3942/0004 Fog



Sanibel

FIBER
100% Pure Wool

WEAVE
Woven Wilton Loop Pile

WIDTH
13'2" (4 Meters)

REPEAT
7.87" W x 7.59" L
(Straight Match)



SHOWN IN SETTING - 5036/0002 SEAFOAM



5036/0001 Tobacco



5036/0002 Seafoam



5036/0003 Bisque



5036/0004 Toffee



Sarah

FIBER
100% Pure Wool

WEAVE
Woven Wilton Loop Pile

WIDTH
13'

REPEAT
8" W x 8" L
(Straight Match)



SHOWN IN SETTING - 3810/0003 SKY



3810/0001 Mist



3810/0002 Onyx



3810/0003 Sky



3810/0004 Bisque



3810/0005 Mushroom



Sarasota

FIBER
100% Pure Wool

WEAVE
Woven Wilton Loop Pile

WIDTH
13'2" (4 Meters)

REPEAT
4.64" W x 4.40" L
(Straight Match)



SHOWN IN SETTING - 5832/0003 TOBACCO



5832/0001 Bisque



5832/0002 Seafoam



5832/0003 Tobacco



5832/0004 Toffee



Saybrook

FIBER
100% Pure Wool

WEAVE
Woven Wilton Loop Pile

WIDTH
13'2" (4 Meters)

REPEAT
1.87" W x 1.75" L
(Half-Drop Match)



SHOWN IN SETTING - 2554/0031 SANDALWOOD



2554/0021 Rose Petal



2554/0022 Powder Blue



2554/0031 Sandalwood



2554/0044 Summer Sage



2554/0087 Khaki



Seychelles

FIBER
100% Pure Wool

CONSTRUCTION
Hand-Tufted Loop Pile

WIDTH
15'

REPEAT
5.9" W x 5.9" L
(Straight Match)



SHOWN IN SETTING - 2262/0004 OYSTER SHELL



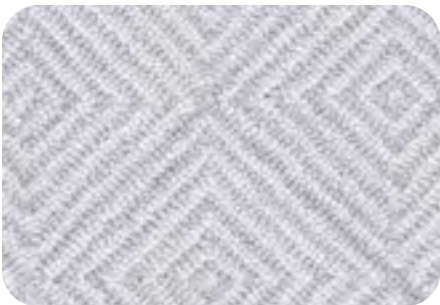
2262/0001 Marine Blue



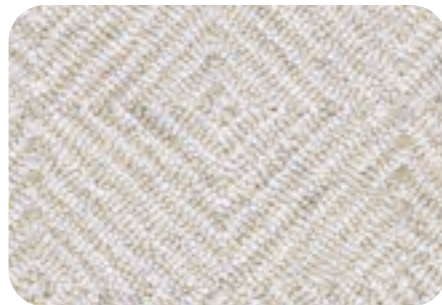
2262/0002 Aquamarine



2262/0003 Sand Dollar



2262/0004 Oyster Shell



2262/0005 Starfish



Sierra Madre

FIBER
60% Wool/40% Polyester

WEAVE
Hand-Loomed Loop Pile

WIDTH
15'

REPEAT
Random Repeat in
Both Width and Length



SHOWN IN SETTING - 6003/0004 GEM STONE



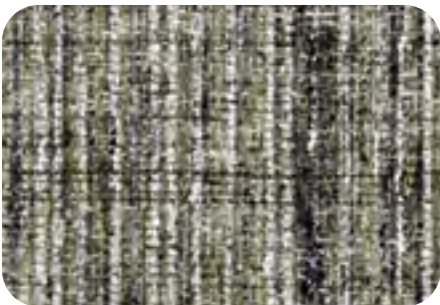
6003/0001 Earth Stone



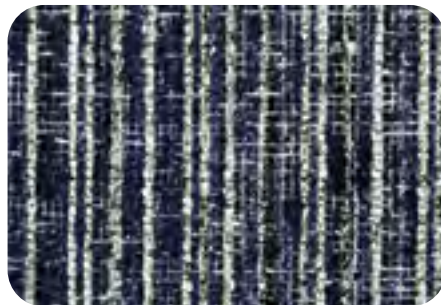
6003/0002 Green Stone



6003/0003 Natural Stone



6003/0004 Gem Stone



6003/0005 Blue Stone



Siesta Key

FIBER
100% Pure Wool

WEAVE
Woven Wilton Loop Pile

WIDTH
13'2" (4 Meters)

REPEAT
6.5" W x 6.75" L
(Straight Match)



SHOWN IN SETTING - 6400/0003 BISQUE



6400/0001 Tobacco



6400/0002 Seafoam



6400/0003 Bisque



6400/0004 Toffee



Somersworth

FIBER
85% Wool/15% Jute

WEAVE
Woven Wilton Loop Pile

WIDTH
13'2" (4 Meters)

REPEAT
3.5" W x 4.75" L
(Straight Match)



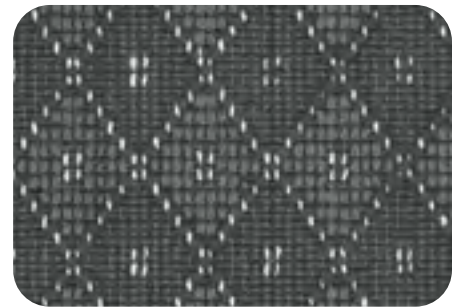
SHOWN IN SETTING - 2700/0001 CAPPUCCINO



2700/0001 Cappuccino



2700/0002 Latte



2700/0003 Charcoal



2700/0004 Tusk



2700/0005 Soft Blue



Spring Hill

FIBER
100% Pure Wool

WEAVE
Hand-Loomed Loop Pile

WIDTH
15'

REPEAT
Random Repeat in
Both Width and Length



SHOWN IN SETTING - 6952/0002 IVORY/MULTI



6952/0001 Ivory/Brown



6952/0002 Ivory/Multi



6952/0003 Ivory/Blue



Stone Harbor

FIBER
100% Pure Wool

WEAVE
Woven Wilton Loop Pile

WIDTH
13'2" (4 Meters)

REPEAT
3" W x 4" L
(Half-Drop Match)



SHOWN IN SETTING - 2112/0003 OCEAN



2112/0001 Mist



2112/0002 Surf



2112/0003 Ocean



2112/0004 Storm



Stone Harbor II

FIBER
100% Pure Wool

WEAVE
Woven Wilton Loop Pile

WIDTH
13'2" (4 Meters)

REPEAT
3" W x 4" L
(Half-Drop Match)



SHOWN IN SETTING - 2916/0003 ROSE



2916/0010 Emerald



2916/0020 Surf



2916/0030 Rose



2916/0040 Sapphire



2916/0050 Onyx



Sweet Treats

FIBER
100% Pure Wool

CONSTRUCTION
Hand-Tufted Loop Pile

WIDTH
15'

REPEAT
Random Repeat in
Both Width and Length



SHOWN IN SETTING - 6101/0004 BLUE CURRANT



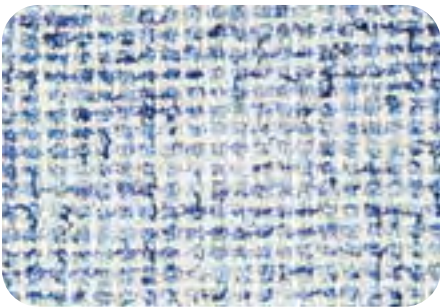
6101/0001 Pistachio



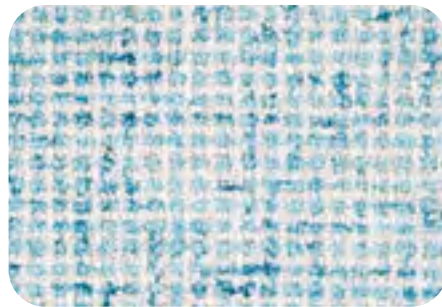
6101/0002 Limeade



6101/0003 Cookies 'N Cream



6101/0004 Blue Currant



6101/0005 Tropical Punch



Teton

FIBER
100% Pure Wool

WEAVE
Hand-Loomed Loop Pile

WIDTH
15'

REPEAT
No Repeat



SHOWN IN SETTING - 7895/0001 NATURAL



7895/0001 Natural



7895/0002 Stone



7895/0003 Lagoon



7895/0004 Tusk



Textured Weave

FIBER
100% Pure Wool

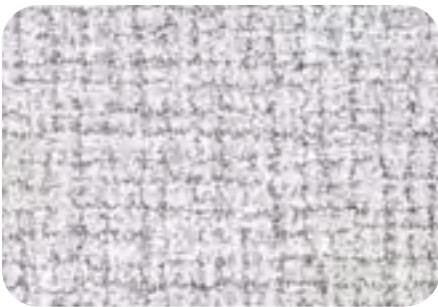
CONSTRUCTION
Hand-Tufted Loop Pile

WIDTH
15'

REPEAT
No Repeat



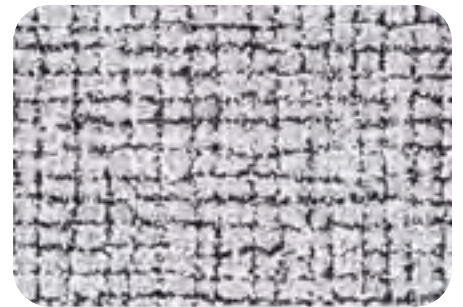
SHOWN IN SETTING - 6005/0005 INDIGO



6005/0001 New Khaki



6005/0002 Chiffon



6005/0003 Chocolate



6005/0004 Robin's Egg



6005/0005 Indigo



Tibet

FIBER
100% Pure Wool

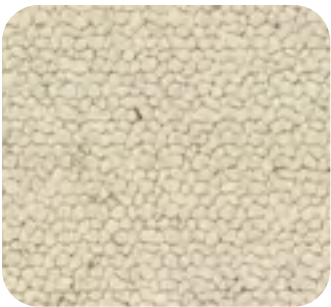
CONSTRUCTION
Tufted Loop Pile Berber

WIDTH
13'2" (4 Meters)

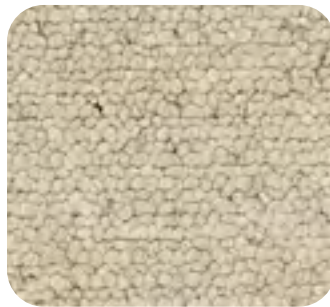
REPEAT
No Repeat



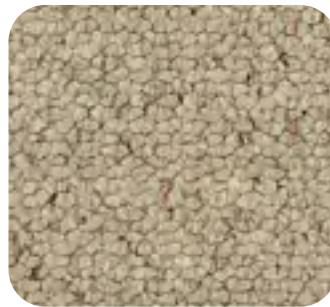
SHOWN IN SETTING - 7000/0005 GREY



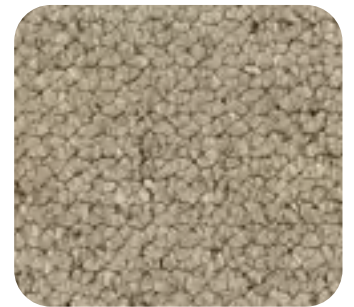
7000/0001
White



7000/0002
Light Beige



7000/0003
Dark Beige



7000/0005
Grey



7000/0008
Light Grey



7000/0009
Black



7000/0010
Pearl White



Times Square

FIBER
100% Pure Wool

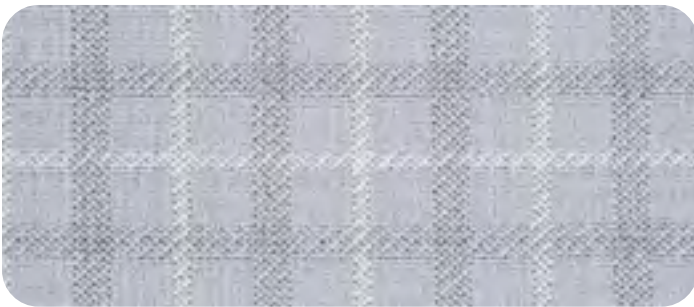
WEAVE
Woven Wilton Loop Pile

WIDTH
13'

REPEAT
5.20" W x 4.72" L
(Straight Match)



SHOWN IN SETTING - 6212/0002 NATURAL LINEN



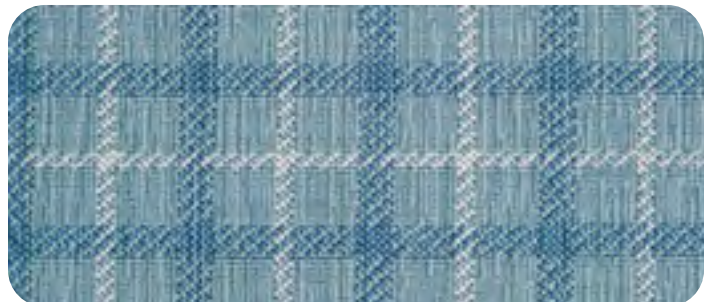
6212/0001 Mineral Ice



6212/0002 Natural Linen



6212/0003 Pacific Blue



6212/0004 Caribbean Turquoise



Tropic Isle

FIBER
100% Pure Wool

CONSTRUCTION
Tufted Loop Pile

WIDTH
13'2" (4 Meters)

REPEAT
No Repeat



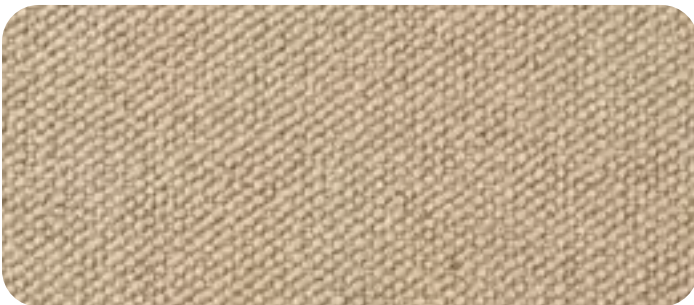
SHOWN IN SETTING - 6523/0004 STONE



6523/0001 Cloud



6523/0002 Sand



6523/0003 Camel



6523/0004 Stone



Tully

FIBER
100% Pure Wool

WEAVE
Hand-Loomed Flatweave

WIDTH
15'

REPEAT
4.13" W x .43" L
(Straight Match)



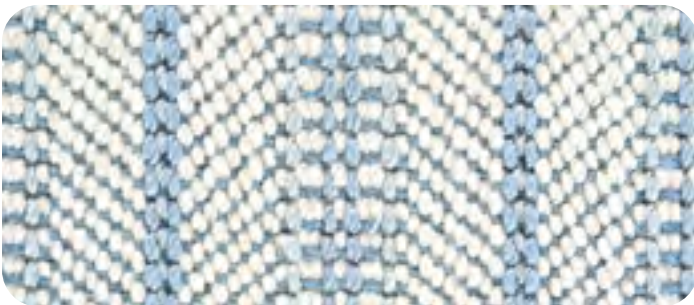
SHOWN IN SETTING - 1632/0003 SKY



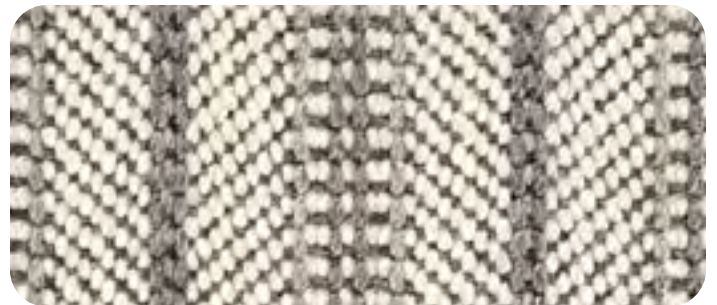
1632/0001 Platinum



1632/0002 Camel



1632/0003 Sky



1632/0004 Dove Grey



Victoria Falls

FIBER
100% Pure Wool

WEAVE
Woven Wilton Loop Pile

WIDTH
12'

REPEAT
6" W x 6" L
(Straight Match)



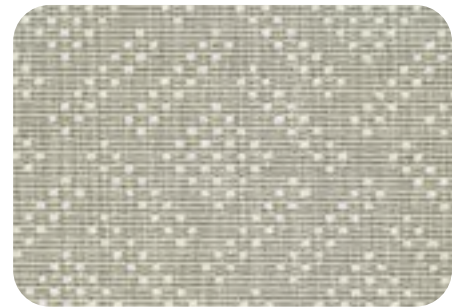
SHOWN IN SETTING - 6501/0001 CHOBE RIVER



6501/0001 Chobe River



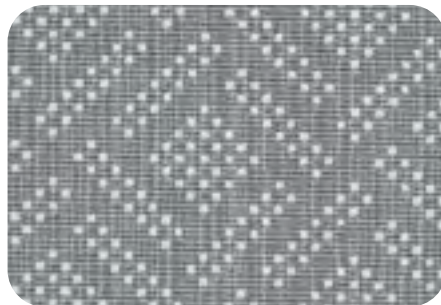
6501/0002 Kruger Park



6501/0003 Zambezi River



6501/0004 Gaborone



6501/0005 Kasane



Villa Carlotta

FIBER
100% Pure Wool

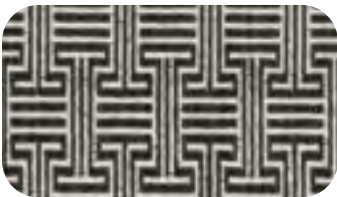
WEAVE
Hand-Loomed Loop Pile

WIDTH
15'

REPEAT
3" W x 7" L
(Straight Match)



SHOWN IN SETTING - 8640/0010 ONYX



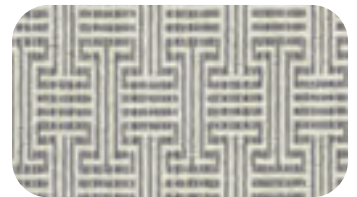
8640/0010 Onyx



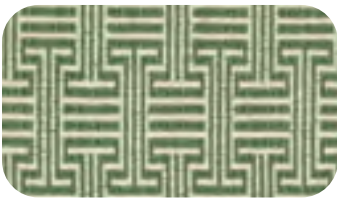
8640/0011 Forest



8640/0012 Taupe



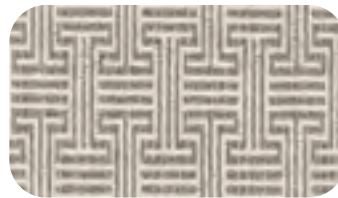
8640/0013 Blue Stone



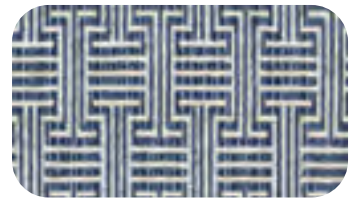
8640/0014 Spruce



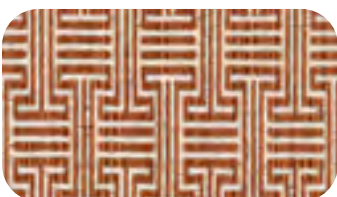
8640/0015 Aqua



8640/0016 Granite



8640/0017 Navy



8640/0018 Rust



Villa D'Este

FIBER
100% Pure Wool

WEAVE
Hand-Loomed Loop Pile

WIDTH
15'

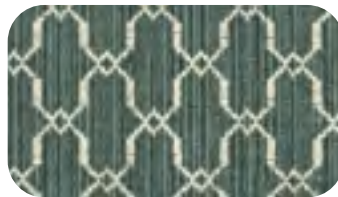
REPEAT
4" W x 5" L
(Straight Match)



SHOWN IN SETTING - 7980/0017 NAVY



7980/0010 Onyx



7980/0011 Forest



7980/0012 Taupe



7980/0013 Blue Stone



7980/0014 Spruce



7980/0015 Aqua



7980/0016 Granite



7980/0017 Navy



7980/0018 Rust



White Oak

FIBER
100% Pure Wool

CONSTRUCTION
Tufted Loop Pile

WIDTH
13'2" (4 Meters)

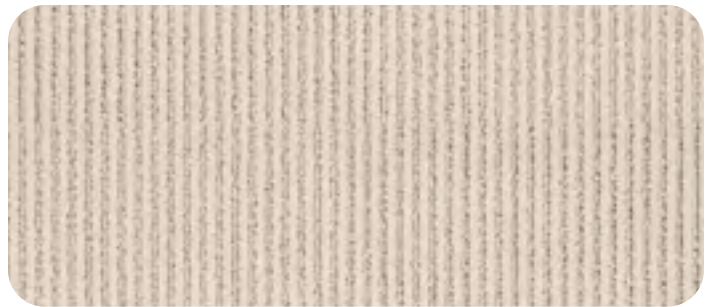
REPEAT
.5" Width



SHOWN IN SETTING - 5680/0001 IVORY



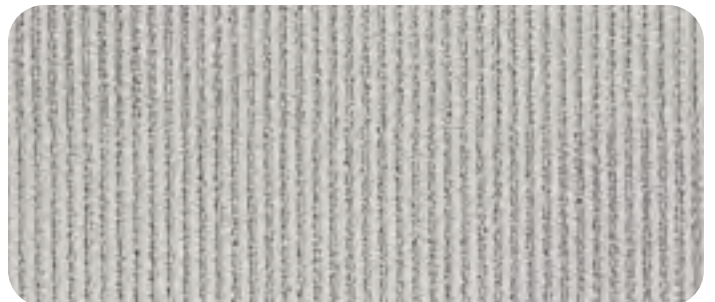
5680/0001 Ivory



5680/0002 Sand



5680/0003 Greystone



5680/0004 Mineral



Willowbrook

FIBER
85% Wool/15% Jute

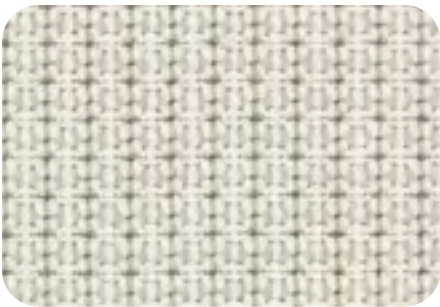
WEAVE
Woven Wilton Loop Pile

WIDTH
13'2" (4 Meters)

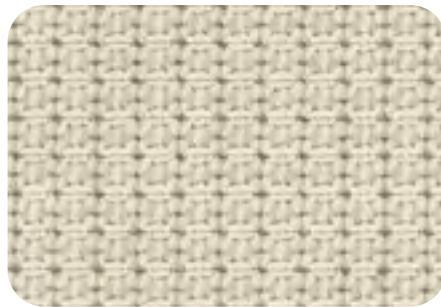
REPEAT
.75" W x .75" L
(Straight Match)



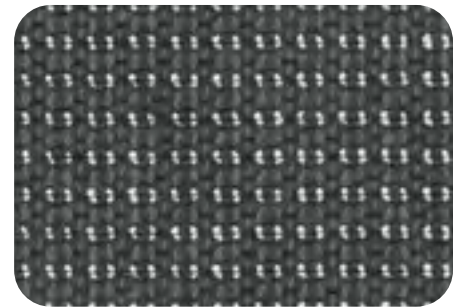
SHOWN IN SETTING - 2980/0005 SOFT BLUE



2980/0001 Cappuccino



2980/0002 Latte



2980/0003 Charcoal



2980/0004 Tusk



2980/0005 Soft Blue



Wilton White Collection | *Corinthian*

FIBER
100% Pure Wool

WEAVE
Woven Wilton Loop Pile

WIDTH
13'2" (4 Meters)

REPEAT
13.18" W x 14.56" L
(Straight Match)



6013/0001 Corinthian/White



Wilton White Collection | *Maze*

FIBER
100% Pure Wool

WEAVE
Woven Wilton Loop Pile

WIDTH
13'2" (4 Meters)

REPEAT
3.54" W x 7" L
(Straight Match)



6013/0002 Maze/White



Wilton White Collection | *Diamond Weave*

FIBER
100% Pure Wool

WEAVE
Woven Wilton Loop Pile

WIDTH
13'2" (4 Meters)

REPEAT
7.87" W x 9" L
(Straight Match)



6013/003 Diamond Weave/White



Wilton White Collection

Basketweave

FIBER
100% Pure Wool

WEAVE
Woven Wilton Loop Pile

WIDTH
13'2" (4 Meters)

REPEAT
5.90" W x 6.29" L
(Straight Match)



6013/0004 Basketweave/White



Wilton White Collection | *Fret*

FIBER
100% Pure Wool

WEAVE
Woven Wilton Loop Pile

WIDTH
13'2" (4 Meters)

REPEAT
8.85" W x 7.87" L
(Straight Match)



6013/0005 Fret/White



Yakima

FIBER
100% Pure Wool

CONSTRUCTION
Hand-Tufted Loop Pile

WIDTH
15'

REPEAT
12.5" W x 15.5" L
(Straight Match)



SHOWN IN SETTING - 8920/0002 BLUE



8920/0001 Coffee



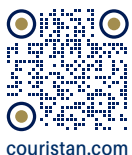
8920/0002 Blue



8920/0003 Beige



TWO EXECUTIVE DRIVE, FORT LEE, NEW JERSEY 07024 • 800.223.6186 • COURISTAN.COM
WALL-TO-WALL CARPET • AREA RUGS • ROLL RUNNERS • CUSTOM RUGS



couristan.com



MAY 2023