



COURISTAN®

January-April
2024

Couri-er

HIGHLAND PLAID

BRAND: Premiere®, **PILE:** 100% Pure Wool

WEAVE: Hand-Loomed Flatweave, **WIDTH:** 15'

Available in: Taupe, Beige, Denim (shown), Charcoal and Light Grey



RESIDENTIAL BROADLOOM & CUSTOM AREA RUGS INTRODUCTIONS

SUMMIT



Available in:

Dark Grey, Light Grey,
Taupe, Green and
Mushroom (shown)

BRAND	Premiere®
PILE	55% Wool / 45 PET (High Content Recycled Materials Used)
WEAVE	Hand-Loomed Loop Pile
WIDTH	15'

NOTE

RESIDENTIAL BROADLOOM

These products can be fabricated into a Custom Size Area Rug.

Finishing options include the following bindings: Chenille, Cotton Fabric, Linen and Courtron™ Polypropylene (For Outdoor/Indoor Usage), 3/8" Synthetic Binding (For Outdoor/Indoor Usage), Wool and Synthetic Serging, and 2" Length Fringe are also available.

Applied Backing Options Include: Outdoor Living Cushion, Non-Skid and Felt (*Standard*)

Contact your Couristan Territory Manager today in regard to our Custom Rug Online Calculator, Boards and Program.

ARTEMIS



BRAND	Premiere®
PILE	100% Pure Wool
WEAVE	Hand-Loomed Loop Pile
WIDTH	15'

Available in: Green, Taupe,
Bronze (shown),
Blue and Steel



ANO MERA

BRAND | Premiere®
PILE | 100% Pure Wool
WEAVE | Hand-Loomed Loop Pile
WIDTH | 15'

Available in: Sunrise, Sunset, Moonlight, Dawn and Dusk (shown)



CAYMUS

BRAND | Premiere®
PILE | 100% Pure Wool
WEAVE | Hand-Loomed Loop Pile
WIDTH | 15'

Available in: Blue, Green, Slate, Beige and Grey (shown)

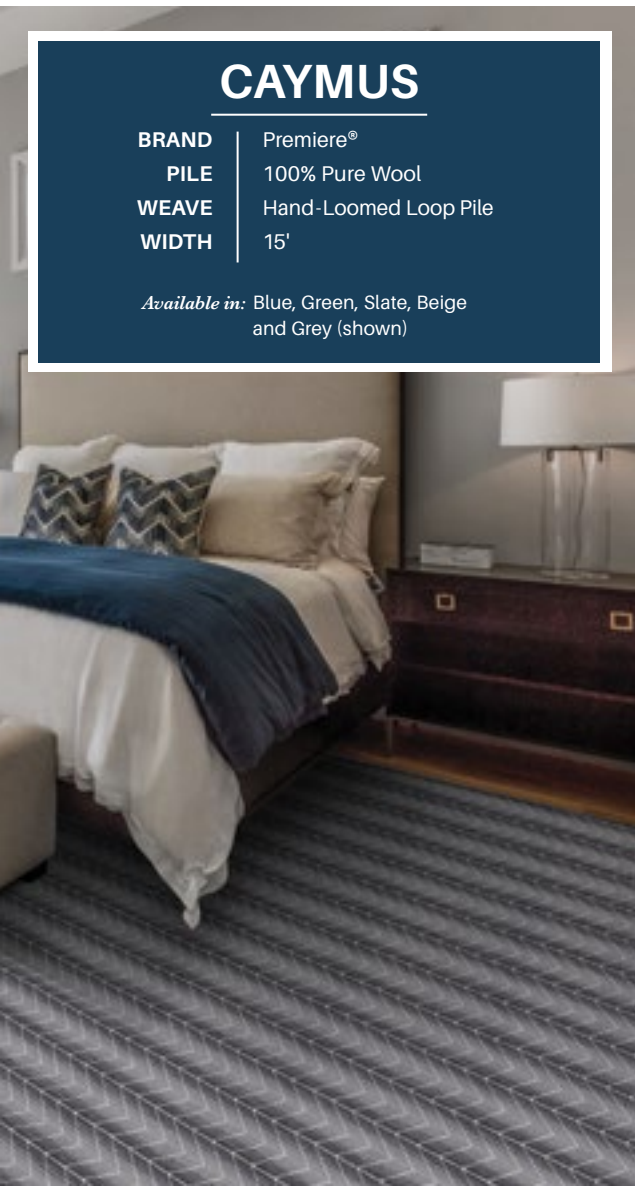
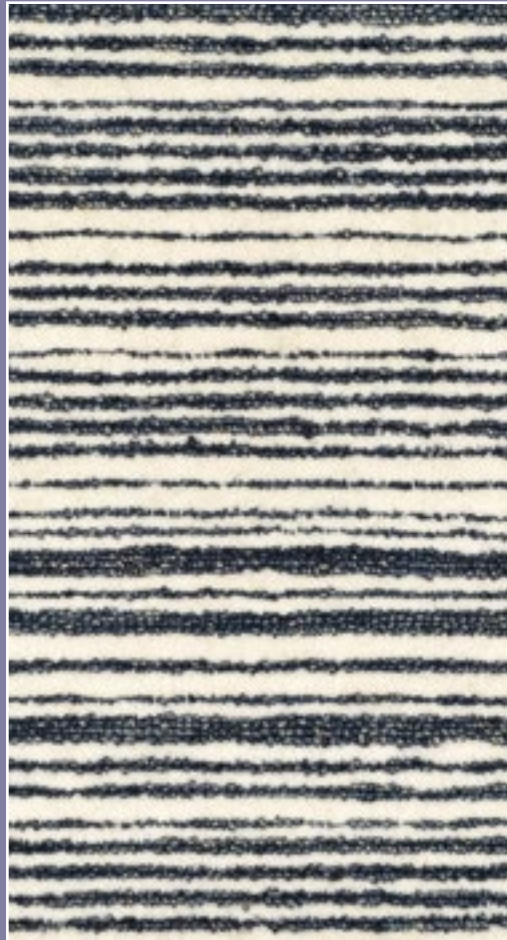


TABLE MOUNTAIN

BRAND | Premiere®
PILE | 100% Pure Wool
CONSTRUCTION | Hand-Tufted Cut and Loop Pile
WIDTH | 15'

Available in: Navy, Aqua, Pebble, Grey and Chrome



AREA RUG INTRODUCTIONS



DOLCE COLLECTION

100% FIBER-ENHANCED COURTRON™ POLYPROPYLENE WITH DURABLE POLYESTER, A STRUCTURED TAPESTRY CONSTRUCTION

SUITABLE FOR OUTDOOR/INDOOR USE

UV STABILIZED; MOLD/MILDEW/WATER RESISTANT

PILE HEIGHT: NO PILE (FLATWEAVE) | POWER-LOOMED IN BELGIUM

Available in 39 Area Rugs

SIZES | 2'3" x 3'11", 4' x 5'10", 5'3" x 7'6", 8'1" x 11'2", 2'3" x 7'10" Runner
(Some Designs Available in a 9'8" x 13'6")



V001/1001
Nain/Sunset



V002/
Kirman/



V004/1004
Persia/Grey



V005/
Heriz/



IMPERIAL COLLECTION

MACHINE-WOVEN IN A FLATWEAVE CONSTRUCTION OF A COTTON/POLYESTER BLEND, EMULATING A HANDMADE AREA RUG

PRINTED DESIGNS IN A DISTRESSED FINISH, GIVING THESE PIECES AN OLD-WORLD FEEL

MUTED COLORS LEND THEMSELVES TO A PLETHORA OF ENVIRONMENTS INCLUDING, TRADITIONAL, TRANSITIONAL, MODERN AND ECLECTIC

PILE HEIGHT: NO PILE (FLATWEAVE)

MADE IN TURKEY

Available in 6 Area Rugs

SIZES | 5' x 8'
8'3" x 10'
10' x 14'



V1002
Apricot



V003/1003
Asiatic/Bluehaze



V1005
Rust

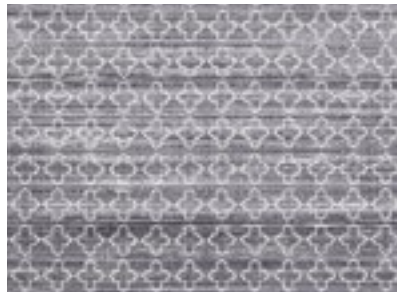


V006/1006
Karaja/Plum

FEZ COLLECTION

MACHINE-WOVEN OF 100% POLYESTER, SHORT-SELF FRINGE ANYWHERE, EVERYWHERE QUALITY; WORKS BOTH INDOORS AND OUTDOORS EASY-CARE, SUBTLE TRANSITIONAL, SOFT CONTEMPORARY AND TRADITIONAL DESIGNS IN A DISTRESSED FINISH
MUTED COLOR PALETTE OF GOLDS, IVORY, NAVY AND EARTH TONES
PILE HEIGHT: NO PILE (FLATWEAVE) | POWER-LOOMED IN TURKEY

SIZES with fringe | 5' x 8', 8' x 10', 9' x 12'

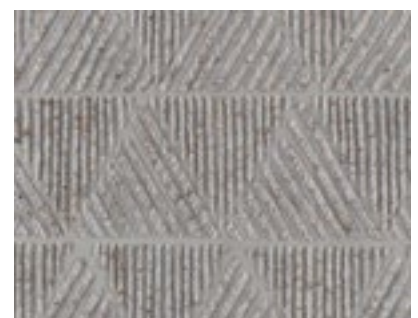
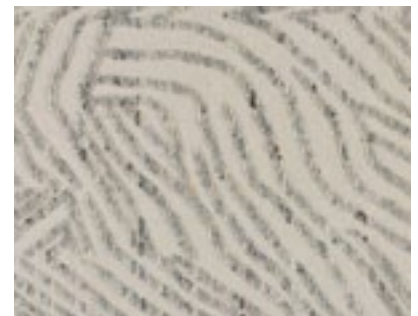


HANCOCK COLLECTION

HAND-KNOTTED AREA RUGS MADE OF 100% PURE WOOL WITH CUT-PILE ACCENTS THE DESIGNS ARE CASUAL IN FEEL, BUT LEND THEMSELVES TO A HOST OF DESIGN OPTIONS: BOHEMIAN, SCANDI, CONTEMPORARY AND TRANSITIONAL, AS WELL AS OTHERS

HAND-KNOTTED IN INDIA

SIZES | 5' x 8', 8' x 10', 9' x 12'





RESIDENTIAL BROADLOOM & CUSTOM AREA RUGS

INTRODUCTIONS

AMELIA ISLAND



CBAI/0007 Rust



CBAI/0001 Green



CBAI/0002 Blue



CBAI/0003 Charcoal



CBAI/0004 Bronze



CBAI/0005 Gold



CBAI/0006 Grey

OUTDOOR/INDOOR

BRAND: Creations™, **PILE:** 100% Courtron™ Polypropylene
WEAVE: Hand-Loomed Flatweave, **WIDTH:** 15'



CBM4/0002 Bronze



CBM4/0003 Blue



CBM4/0004 Taupe



CBM4/0005 Green

OUTDOOR/INDOOR

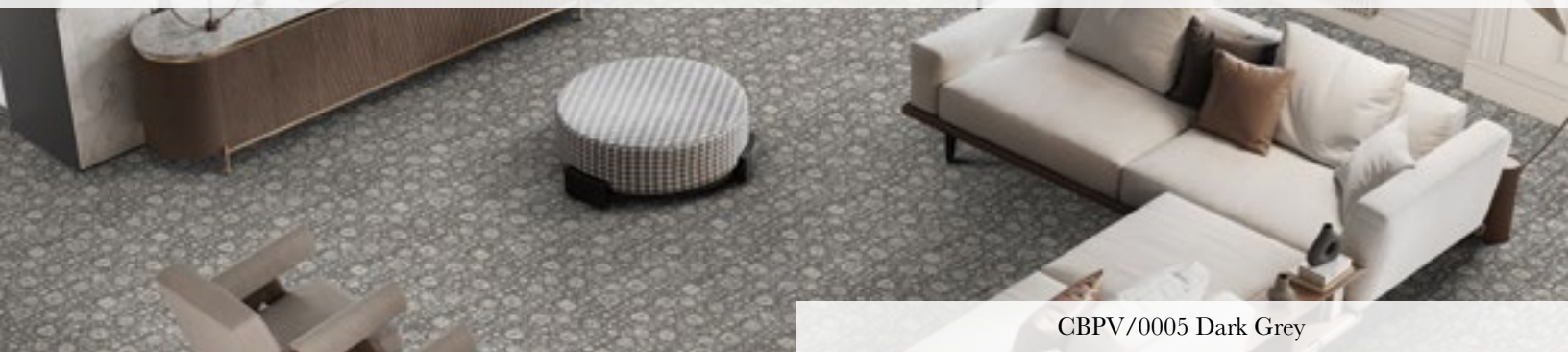
BRAND: Creations™, **PILE:** 100% Courtron™ Polypropylene
WEAVE: Woven Wilton Flatweave, **WIDTH:** 13'2" (4 Meters)

EMERALD LAKE



CBM4/0001 Charcoal

PERSIAN VINES



CBPV/0005 Dark Grey



CBPV/0001 Blue



CBPV/0002 Dark Beige



CBPV/0003 Light Beige



CBPV/0004 Light Grey

BRAND: Creations™

PILE: 80% Heat-Set Courtron™ Polypropylene / 20% Shrink Polyester

WEAVE: Face-to-Face Woven Wilton High/Low Cut-Pile, **WIDTH:** 13'2" (4 Meters)



CBPK/0002 Dark Grey



CBPK/0003 Light Grey



CBPK/0004 Beige



CBPK/0005 Charcoal

BRAND: Creations™

PILE: 80% Shrink Polyester / 20% Heat-Set Courtron™ Polypropylene

WEAVE: Face-to-Face Woven Wilton High/Low Cut-Pile, **WIDTH:** 13'2" (4 Meters)

PERSIAN DAMASK



CBPK/0001 Blue

RESIDENTIAL BROADLOOM & CUSTOM AREA RUGS

NEW OUTDOOR/INDOOR INTRODUCTION

HARBOR ISLAND

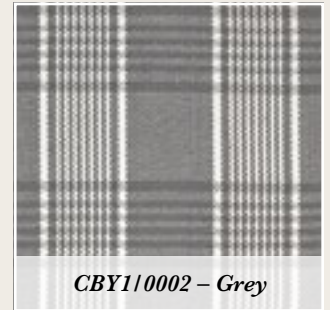
*Brand: Creations™, Pile: 100% PET (High Content Recycled Materials Used)
Weave: Hand-Loomed Flatweave, Width: 15'*



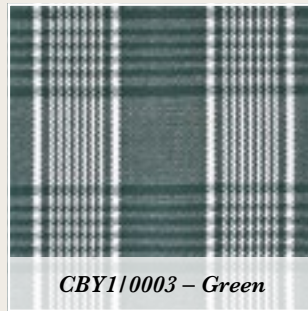
CBY1/0004 – Beige



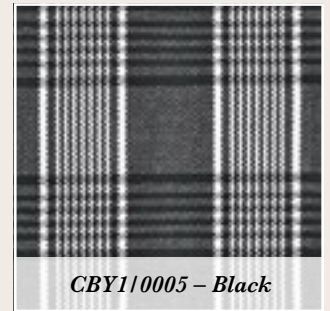
CBY1/0001 – Blue



CBY1/0002 – Grey



CBY1/0003 – Green



CBY1/0005 – Black



WELCOME TO ROOM VISION

For the designer in you... with our 'Room Vision' tool your customers can see just how beautiful their room will look with a Couristan area rug or carpet before making their purchase.

Find their perfect carpet or rug today!



DESIGNER'S CHOICE RESIDENTIAL BROADLOOM & CUSTOM AREA RUGS BOX SET

25 *Premiere®* Brand – 9" x 9" *Sample Swatches*
30 *Creations™* Brand – 9" x 9" *Sample Swatches*

