



COURISTAN®

July-December
2024

Courier

HANCOCK COLLECTION

Hand-Knotted of 100% Sustainable Wool

Knotted in a Loose Construction and Featuring a Cut-Pile Finish That Adds High/Low Textural Elements to Each Geometric and Transitional Motif

Casual Feel in a Hand-Knotted Technique Allows These Pieces to Work in Multiple Environments

Pile Height: .511" • Hand-Knotted in India • Available in 4 Area Rugs

Sizes: 5'6" x 8'6", 7'6" x 9'6", 9' x 12', 10'6" x 13'6"



RESIDENTIAL BROADLOOM & CUSTOM AREA RUGS INTRODUCTIONS

ROYAL POINCIANA



Available in:
Multi, Grey (shown)
and Ivory

BRAND	Premiere®
PILE	100% Pure Wool
CONSTRUCTION	Hand-Tufted High/Low Loop Pile
WIDTH	15'

NOTE

RESIDENTIAL BROADLOOM

These products can be fabricated into a Custom Size Area Rug.

Finishing options include the following bindings: Chenille, Cotton Fabric, Linen and Courtron™ Polypropylene (For Outdoor/Indoor Usage), 3/8" Synthetic Binding (For Outdoor/Indoor Usage), Wool and Synthetic Serging, and 2" Length Fringe are also available.

Applied Backing Options Include: Outdoor Living Cushion, Non-Skid and Felt (*Standard*)

Contact your Couristan Territory Manager today in regard to our Custom Rug Online Calculator, Boards and Program.

CENTURY VILLAGE



BRAND	Premiere®
PILE	100% Pure Wool
CONSTRUCTION	Hand-Tufted Cut and Loop Pile
WIDTH	15'

Available in: Charcoal, Ivory
and Light Grey (shown)



INSLEY

BRAND | Premiere®
PILE | 100% Pure Wool
WEAVE | Hand-Loomed Cut and Loop Pile
WIDTH | 15'

Available in: Multi (shown), Platinum, Honey, Blue and Grey



EQUINOX

BRAND | Premiere®
PILE | 100% Pure New Zealand Wool
CONSTRUCTION | Hand-Tufted Loop, Random Tip-Sheared Pile
WIDTH | 15'

Available in: Honey, Amber, Green, Mocha, Platinum (shown), Oatmeal and Denim



AREA RUG INTRODUCTIONS



BANQUO COLLECTION

HAND-TUFTED OF 100% SUSTAINABLE NATURAL UNDYED WOOL
EACH PIECE FEATURES SEVERAL TEXTURAL ELEMENTS, INCLUDING DEEP CARVING
AND OVERSTITCHING FOR ADDED AESTHETIC INTEREST
TONAL CONTEMPORARY AND TRANSITIONAL DESIGNS ALLOW FOR
EASE OF USE IN ALL ENVIRONMENTS
PILE HEIGHT: .314" | HAND-TUFTED IN INDIA

Available in 3 Area Rugs
SIZES | 5' x 8', 8' x 10', 9' x 12', 10' x 14'



4771/3661
Leylan/Amber-Multi



4773/3526
Tajan/Garnet-Multi



4774/
Farah/La



KALBARRI COLLECTION

HAND-WOVEN BASE OF THE SOFTEST BLEND OF WOOLS, INCLUDING RICH NEW ZEALAND WOOL

A UNIQUE COLLECTION OF DIGITALLY PRINTED PIECES DESIGNED TO EMULATE THE LOOK OF HIGHER-END ANTIQUE, HAND-KNOTTED RUGS

TRADITIONAL DESIGNS WITH A MODERN TWIST, THESE RUGS FEATURE BEAUTIFUL PERSIAN-INSPIRED MOTIFS IN FASHION-FORWARD COLOR PALETTES

PILE HEIGHT: NO PILE (FLAT WEAVE)

HAND-WOVEN IN INDIA

Available in 5 Area Rugs

SIZES | 5' x 8'
8' x 10'
9' x 12'
10' x 14'



4772/5001
Dez/Turquoise-Multi



4775/3652
Roxana/Ruby-Multi

5011
pis-Multi

CIORA COLLECTION

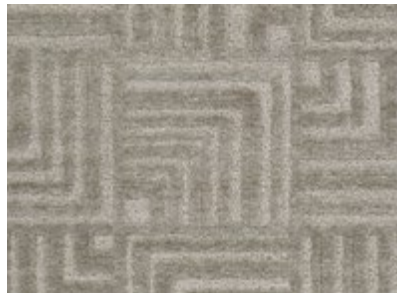
100% SUSTAINABLE WOOL

HAND-KNOTTED IN A CHUNKY CONSTRUCTION, UTILIZING CARVED ELEMENTS FOR ADDED TEXTURE

GEOMETRIC AND ABSTRACT DESIGNS ADORN THESE THICKLY KNOTTED PIECES GIVING THEM A MODERN FEEL IN AN EARTHEN COLOR PALETTE

PILE HEIGHT: UP TO 1" | HAND-KNOTTED IN INDIA

SIZES | 5' x 8', 8' x 10', 9' x 12', 10' x 14'



SIMONE COLLECTION

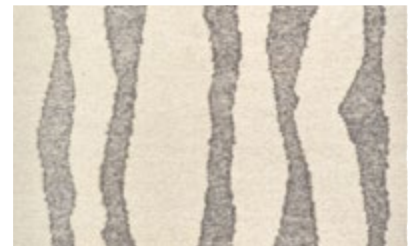
HAND-WOVEN OF 100% WOOL

WOVEN USING A DHURRIE CONSTRUCTION, THESE AREA RUGS WERE DESIGNED TO EMULATE A KILIM WEAVE WITH A CASUAL FEEL

DESIGNS ARE SIMPLE LINEAR AND ABSTRACT PATTERNS, HIGHLIGHTING THE BEAUTY OF THE WEAVE

PILE HEIGHT: NO PILE (FLAT WEAVE) | HAND-WOVEN IN INDIA

SIZES | 5' x 8', 8' x 10', 9' x 12', 10' x 14'





JULIET COLLECTION

HAND-TUFTED OF 100% WOOL

THIS COLLECTION UTILIZES A LOOPED FINISH, GIVING EACH PIECE A BEAUTIFUL TEXTURAL ELEMENT; SPACE-DYED YARNS ARE USED TO ADD DEPTH

TONAL DESIGNS IN TRADITIONAL PATTERNS ALLOW THESE RUGS TO WORK IN EVERYTHING FROM A BOHEMIAN TO A TRADITIONAL ROOM

INSPIRED BY KERMAN, HERIZ AND MALAYER MOTIFS, THESE PIECES ARE MODERN INTERPRETATIONS OF CENTURIES-OLD DESIGN AESTHETICS

PILE HEIGHT: .393"

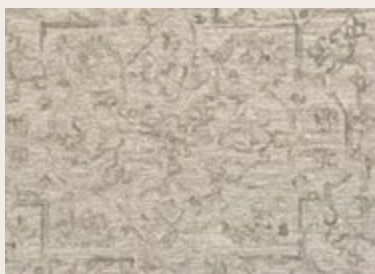
HAND-TUFTED IN INDIA

Available in 4 Area Rugs

SIZES | 5'x 8', 8'x10', 9'x12', 10'x14'



6927/2771
Rosaline/Limestone



6927/2882
Rosaline/Wheat



6927/3222
Rosaline/Fog Grey



6927/4134
Rosaline/Seafoam

NORWAY COLLECTION

HAND-KNOTTED OF 100% SUSTAINABLE UNDYED NATURAL WOOL

KNOTTED IN A LARGER-KNOT CONSTRUCTION WITH EACH PIECE FEATURING A HIGH/LOW APPEARANCE, UNIQUE TEXTURAL ELEMENTS AND A NUBBY FINISH FOR ADDED DEPTH AND DIMENSION

MINIMALIST DESIGNS ARE CREATED IN A TONE-ON-TONE PALETTE, ALLOWING THE BEAUTY OF THESE HANDMADE PIECES TO SHINE THROUGH

PILE HEIGHT: .UP TO .5"

HAND-KNOTTED IN INDIA

Available in 5 Area Rugs

SIZES | 5'6"x 8'6", 7'6"x 9'6", 8'6"x 11'6", 9'6"x 12'6"



6320/8001
Istra/Nordic White



6321/2822
Bastion/Oatmeal



6322/8001
Sonia/Nordic White



6323/2822
Stavern/Oatmeal



6324/2822
Yarrow/Oatmeal



RESIDENTIAL BROADLOOM & CUSTOM AREA RUGS

INTRODUCTIONS

EAGLE CREEK



CBEK/0003 Beige



CBEK/0001 Blue



CBEK/0002 Taupe



CBEK/0004 Charcoal



CBEK/0005 Slate

BRAND: Creations™

PILE: 65% Shrink Polyester/35% Heat-Set Courtron™ Polypropylene

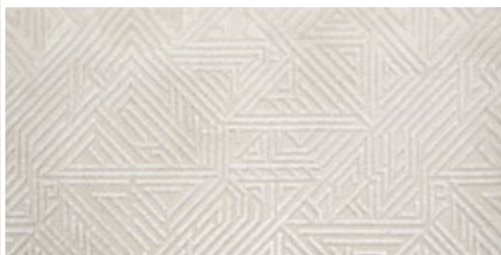
WEAVE: Face-to-Face Woven Wilton High/Low Cut-Pile, **WIDTH:** 13'2" (4 Meters)



CBVZ/0001 Slate



CBVZ/0002 Sterling



CBVZ/0003 Cream



CBVZ/0005 Taupe

BRAND: Creations™

PILE: 85% Heat-Set Courtron™ Polypropylene / 15% Shrink Polyester

WEAVE: Face-to-Face Woven Wilton High/Low Cut-Pile, **WIDTH:** 13'2" (4 Meters)

VIZCAYA



CBVZ/0004 Beige

ANYWHERE/EVERYWHERE AREA RUGS

NEW OUTDOOR/INDOOR INTRODUCTIONS

FEZ COLLECTION

Machine-Woven of the Softest 100% Polyester, These Rugs are Inspired by Turkish Antiques
 Transitional and Soft Contemporary Designs Give These Anywhere/Everywhere Rugs the Ability to Toggle Effortlessly From Indoors to Out
 A Warm, Earthy Palette Allows These Pieces to Work in Any Environment From Transitional to Traditional to Contemporary and Everything in Between
 Pile Height: No Pile (Flat Weave) • Made in Turkey

SIZES | 5'x7'10" • 7'10"x 10'10" • 9'x 12'



FEZ1/3434
Medina/Earthen



FEZ2/7234
Sidi/Sunlight



FEZ3/3434
Souk/Earthen



FEZ4/1331
Riad/Ash



FEZ4/2222
Riad/Sand



FEZ4/6111
Riad/Tobacco



FEZ5/5252
Palais/Storm Grey

LIGURIA COLLECTION

Machine-Woven of 100% Courtron™ Polypropylene in a High/Low Construction Emulating a Handmade Cut/Loop Pile Technique
 Transitional and Soft Contemporary Designs Give These Anywhere/Everywhere Rugs the Ability to Toggle Effortlessly from Indoors to Out
 Soft, Neutral Motifs are Highlighted by Space-Dyed Accents that Work in Multiple Environments
 Water, Mold/Mildew Resistant; UV Stabilized
 Pile Height: .157" • Made in Turkey

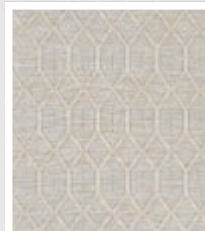
SIZES | 5'3"x7'6" • 6'6"x9'6" • 7'10"x9'10" • 9'x 12'1"



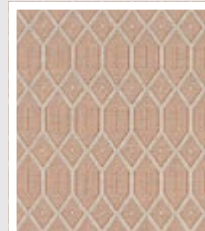
LIG1/1001
Sarzana/Dove Grey



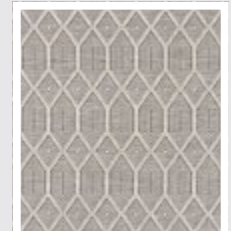
LIG2/1212
Levanto/Aqua



LIG3/1212
Rapallo/Aqua



LIG3/2312
Rapallo/Umber



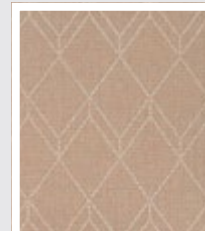
LIG3/3112
Rapallo/Pebble



LIG4/1001
Noli/Dove Grey



LIG4/1221
Noli/Azul



LIG4/2312
Noli/Umber