

ARTISANAL

HANDMADE COLLECTIONS



COURISTAN®
Inspired by Life





ARTISANAL

HANDMADE COLLECTIONS

There is something truly magical about the journey of a handmade rug from loom to room; each piece tells its own story, vibrating with the energy of the hands that created it.

Beginning with the selection of yarns, the intricate dyeing processes and ultimately, the weaving, these pieces are crafted with the knowledge of age-old practices that are passed down over countless generations. Handmade rugs have always held a very special place in the fiber of Couristan's history and we honor that history with our collection of artisan pieces.

Couristan began its tradition of quality almost 100 years ago, offering hand-knotted rugs that reflected their deep history. Over the years, the assortment has moved to embrace the changing times with more selections in machine-woven and outdoor qualities; this year seemed like the perfect time to go back to our roots.

Over the last several months, we have worked hard to create a collection that is reflective of Couristan's lineage in rugs, returning to handmade pieces that speak to it. These modern heirlooms are au courant in aesthetic with a gentle nod to the rugs that came before them. Beautiful hand-knotted designs, absent of repeats, are given new life in hues of pink, turquoise and indigo. Sustainable collections in undyed wools and chunky finishes showcase the true artistry of the weavers, highlighting that "thing" about these rugs that made us fall in love all those years ago.

Our hope is that you listen carefully to the stories that our rugs tell and give them a place to showcase their beauty.

-
- 1-4 BANQUO
 - 5-8 CHALET
 - 9-12 CIORA
 - 13-16 HANCOCK
 - 17-20 JULIET
 - 21-24 KALBARRI
 - 25-28 NORWAY
 - 29-32 SIMONE

BANQUO COLLECTION





HAND-TUFTED OF 100% SUSTAINABLE NATURAL UNDYED WOOL

EACH PIECE FEATURES SEVERAL TEXTURAL ELEMENTS,
INCLUDING CARVING AND OVERSTITCHING FOR
ADDED AESTHETIC INTEREST

TONAL CONTEMPORARY AND TRANSITIONAL DESIGNS
ALLOW FOR EASE OF USE IN ALL ENVIRONMENTS

PILE HEIGHT: .314"

HAND-TUFTED IN INDIA



STOCKED SIZES

5' x 8'

8' x 10'

9' x 12'

10' x 14'

All Sizes Are Approximate

* All Designs are
available in a
18" x 18" sample.

This Collection
is Only available
to authorized
Brick-and-Mortar
Couristan Dealers.

BANQUO COLLECTION



6834/1301
WARWICK/NATURAL



6835/6011
MERCUTIO/COFFEE-IVORY

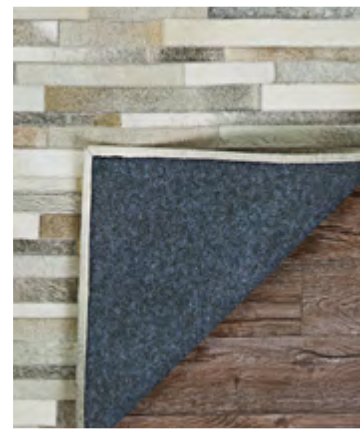
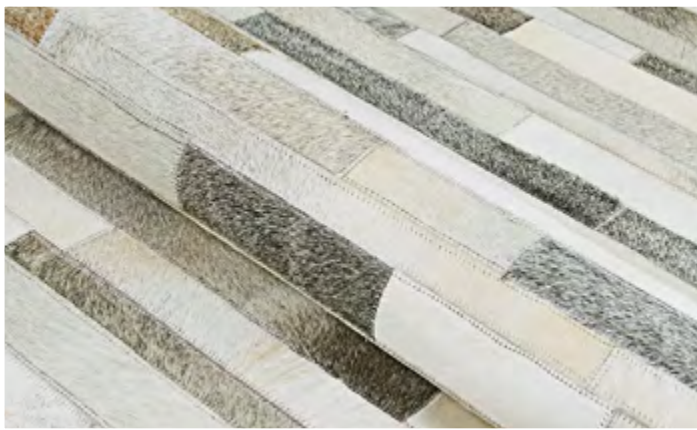


6836/5111
BURNELL/SANDSTONE



CHALET COLLECTION





MADE OF 100% NATURAL COWHIDE LEATHER

MATERIALS SOURCED ETHICALLY

UNIQUE MODERN STRIPE, ABSTRACT
AND GEOMETRIC DESIGNS

FELT BACKING TO ENSURE QUALITY,
DURABILITY AND LASTING BEAUTY

PILE HEIGHT: NO PILE (ANIMAL SKIN)

HAND-CRAFTED IN INDIA

* Designs 0027/0101
and 0348/1579
are available in a
18" x 18" sample.



** Custom size
area rugs may
be ordered.

This Collection
is available
to authorized
Brick-and-Mortar
and Ecommerce
Couristan Dealers.

STOCKED SIZES

2' x 4'

3'4" x 5'4"

5'4" x 8'

8' x 11'4"

9'4" x 13'4"

All Sizes Are Approximate

CHALET COLLECTION



0027/0101
PLANK/GREY-IVORY



0348/1579
TILE/BROWN



3259/0243
MEANDER/BLACK-IVORY



9212/0312
TESSELA/CHOCOLATE



9236/0411
FREEFORM/CAPPUCINO



9274/0167
PRISM/NATURALS

CIORA COLLECTION





100% SUSTAINABLE WOOL

HAND-KNOTTED IN A CHUNKY CONSTRUCTION,
UTILIZING CARVED ELEMENTS FOR ADDED TEXTURE

CIORA IS THE GAELIC WORD FOR "SHEEP",
PERFECT FOR THIS COLLECTION OF KNOTTED RUGS,
AS THE BACK FEATURES A LOOPED FINISH REMINISCENT
OF SHEEP WANDERING THE IRISH COUNTRYSIDE

GEOMETRIC AND ABSTRACT DESIGNS ADORN
THESE THICKLY KNOTTED PIECES GIVING THEM A
MODERN FEEL IN AN EARTHEN COLOR PALETTE

PILE HEIGHT: UP TO 1"

HAND-KNOTTED IN INDIA

STOCKED SIZES

5' x 8'

8' x 10'

9' x 12'

10' x 14'

All Sizes Are Approximate

* All Designs are
available in a
18" x 18" sample.

This Collection
is Only available
to authorized
Brick-and-Mortar
Couristan Dealers.

CIORA COLLECTION



4162/1001
WARREN/LIGHT BEIGE



4163/2001
WAVES/SAND



4164/4001
RHOMBUS/RAW SMOKE



4165/3001
DUNES/WHEAT



HANCOCK COLLECTION





HAND-KNOTTED OF 100% SUSTAINABLE WOOL

KNOTTED IN A LOOSE CONSTRUCTION AND FEATURING
A CUT-PILE FINISH THAT ADDS HIGH/LOW TEXTURAL ELEMENTS
TO EACH GEOMETRIC AND TRANSITIONAL MOTIF

CASUAL FEEL IN A HAND-KNOTTED TECHNIQUE ALLOWS
THESE PIECES TO WORK IN MULTIPLE ENVIRONMENTS

PILE HEIGHT: .511"

HAND-KNOTTED IN INDIA



STOCKED SIZES

5'6" x 8'6"

7'6" x 9'6"

9' x 12'

10'6" x 13'6"

All Sizes Are Approximate

* All Designs are
available in a
18" x 18" sample.

This Collection
is Only available
to authorized
Brick-and-Mortar
Couristan Dealers.

HANCOCK COLLECTION



5904/1801
ALTAI/NATURAL



5905/3012
ATLAS/GREY



5906/6402
BROOKS/MOCHA



5907/0001
CARPATHIAN/CHARCOAL



JULIET COLLECTION





HAND-TUFTED OF 100% WOOL

THIS COLLECTION UTILIZES A LOOPED FINISH, GIVING EACH PIECE A BEAUTIFUL TEXTURAL ELEMENT; SPACE-DYED YARNS ARE USED TO ADD DEPTH

TONAL DESIGNS IN TRADITIONAL PATTERNS ALLOW THESE RUGS TO WORK IN EVERYTHING FROM A BOHEMIAN TO A TRADITIONAL ROOM

INSPIRED BY KERMAN, HERIZ AND MALAYER MOTIFS, THESE PIECES ARE MODERN INTERPRETATIONS OF CENTURIES-OLD DESIGN AESTHETICS

PILE HEIGHT: .393"

HAND-TUFTED IN INDIA



* All Designs are available in a 18" x 18" sample.

This Collection is Only available to authorized Brick-and-Mortar Couristan Dealers.

STOCKED SIZES

5' x 8'

8' x 10'

9' x 12'

10' x 14'

All Sizes Are Approximate

JULIET COLLECTION



6927/2771
ROSALINE/LIMESTONE



6927/2882
ROSALINE/WHEAT



6927/3222
ROSALINE/FOG GREY

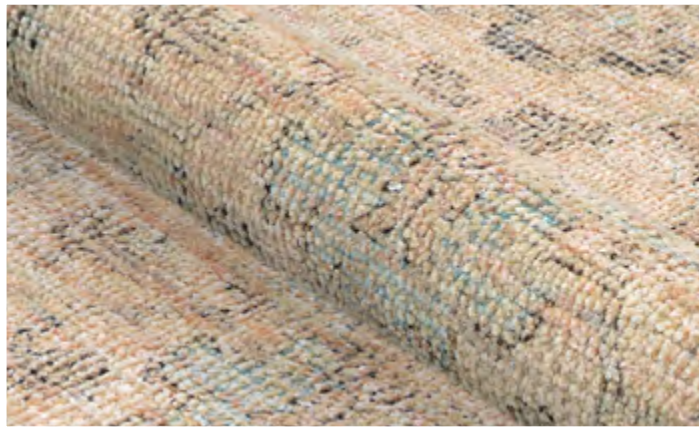


6927/4134
ROSALINE/SEAFOAM



KALBARRI COLLECTION





HAND-WOVEN BASE OF THE SOFTEST BLEND OF WOOLS,
INCLUDING RICH NEW ZEALAND WOOL

A UNIQUE COLLECTION OF DIGITALLY PRINTED PIECES
DESIGNED TO EMULATE THE LOOK OF HIGHER-END ANTIQUE,
HAND-KNOTTED RUGS

TRADITIONAL DESIGNS WITH A MODERN TWIST,
THESE RUGS FEATURE BEAUTIFUL PERSIAN-INSPIRED MOTIFS
IN FASHION-FORWARD COLOR PALETTES

FRINGED EDGES • PILE HEIGHT: NO PILE (FLAT WEAVE)

HAND-WOVEN IN INDIA

**STOCKED SIZES
(WITH FRINGE)**

5' x 8'

8' x 10'

9' x 12'

10' x 14'

All Sizes Are Approximate

* All Designs are
available in a
18" x 18" sample.

This Collection
is Only available
to authorized
Brick-and-Mortar
Couristan Dealers.

KALBARRI COLLECTION



4771/3661
LEYLAN/AMBER-MULTI



4772/5001
DEZ/TURQUOISE-MULTI



4773/3526
TAJAN/GARNET-MULTI



4774/5011
FARAH/LAPIS-MULTI



4775/3652
ROXANA/RUBY-MULTI



NORWAY COLLECTION





HAND-KNOTTED OF 100% SUSTAINABLE
UNDYED NATURAL WOOL

KNOTTED IN A LARGER-KNOT CONSTRUCTION WITH
EACH PIECE FEATURING A HIGH/LOW APPEARANCE,
UNIQUE TEXTURAL ELEMENTS AND A NUBBY FINISH
FOR ADDED DEPTH AND DIMENSION

MINIMALIST DESIGNS ARE CREATED IN A
TONE-ON-TONE PALETTE, ALLOWING THE BEAUTY OF
THESE HANDMADE PIECES TO SHINE THROUGH

PILE HEIGHT: UP TO .5"

HAND-KNOTTED IN INDIA

STOCKED SIZES

5'6" x 8'6"

7'6" x 9'6"

8'6" x 11'6"

9'6" x 12'6"

All Sizes Are Approximate

* All Designs are
available in a
18" x 18" sample.

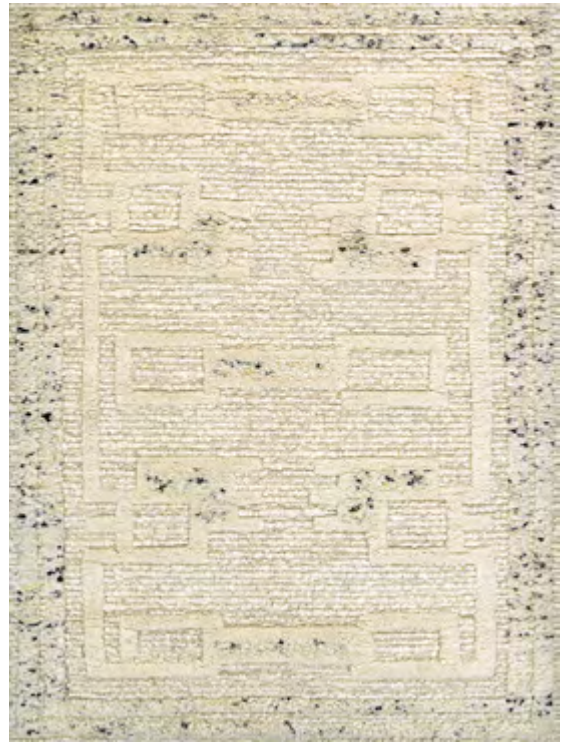
This Collection
is Only available
to authorized
Brick-and-Mortar
Couristan Dealers.



NORWAY COLLECTION



6320/8001
ISTRA/NORDIC WHITE



6321/2822
BASTION/OATMEAL



6322/8001
SONJA/NORDIC WHITE



6323/2822
STAVERN/OATMEAL



6324/2822
YARROW/OATMEAL



SIMONE COLLECTION





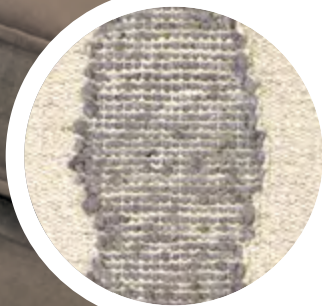
HAND-WOVEN OF 100% WOOL

WOVEN USING A DHURRIE CONSTRUCTION, THESE AREA RUGS WERE DESIGNED TO EMULATE A KILIM WEAVE WITH A CASUAL FEEL

DESIGNS ARE SIMPLE LINEAR AND ABSTRACT PATTERNS, HIGHLIGHTING THE BEAUTY OF THE WEAVE

PILE HEIGHT: NO PILE (FLAT WEAVE)

HAND-WOVEN IN INDIA



STOCKED SIZES

5' x 8'

8' x 10'

9' x 12'

10' x 14'

All Sizes Are Approximate

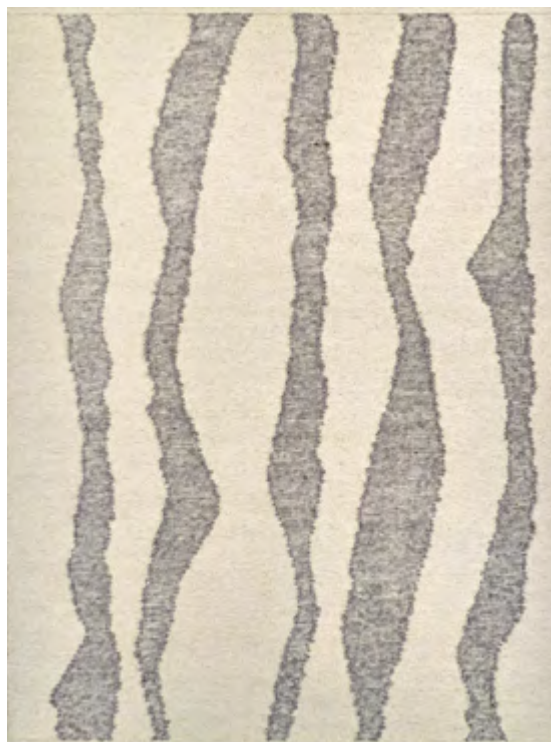
* All Designs are available in a 18" x 18" sample.

This Collection is Only available to authorized Brick-and-Mortar Couristan Dealers.

SIMONE COLLECTION



6114/2031
KARINA/CHOCOLATE



6115/2564
LYRA/CREAM-MOCHA



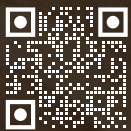
6116/6402
VELA/MOCHA





TWO EXECUTIVE DRIVE, FORT LEE, NEW JERSEY 07024 • 800.223.6186 • COURISTAN.COM

Wall-To-Wall Carpet • Area Rugs • Roll Runners • Custom Rugs



couristan.com



SEPTEMBER 2024