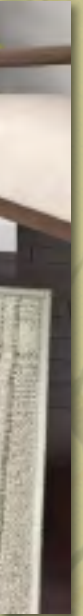
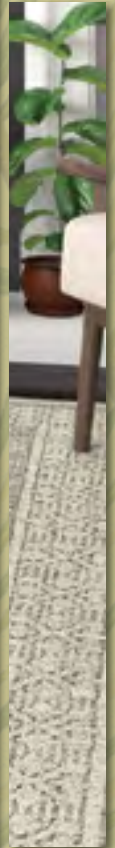
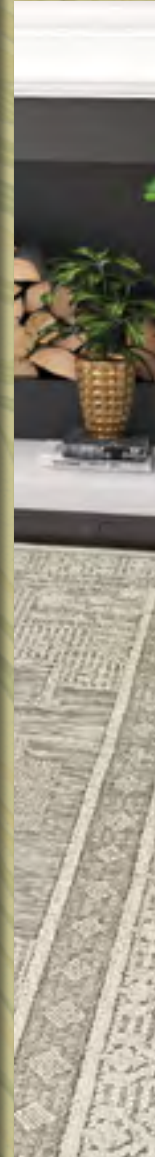
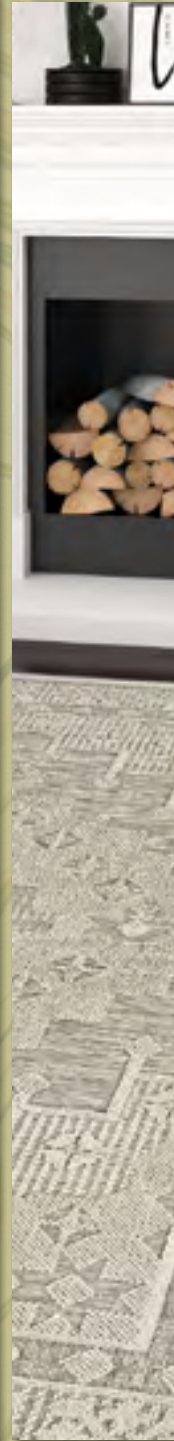


ELEMENTAL

OUTDOOR/INDOOR COLLECTIONS
PLACE THEM ANYWHERE AND EVERYWHERE



COURISTAN®
Inspired by Life





ELEMENTAL

*OUTDOOR/INDOOR COLLECTIONS
PLACE THEM ANYWHERE AND EVERYWHERE*

Elemental by definition is “related to or embodying the powers of nature.”

Our collection of outdoor/indoor, anywhere/everywhere rugs are the truest embodiment of powerful; all are tested for mildew and fade resistance and work just as effectively indoors in your highest traffic areas as they do outdoors.

Couristan has been a leader in the outdoor rug category for over 20 years, pioneering the concept of using polypropylene in both the warp and the weft of the rugs to guarantee year-round enjoyment. We began our offering with our Recife collection and have continued to honor that tradition, by adding trend-forward constructions and designs to make your outdoor space an extension of your indoors.

We are proud of our place in this journey and glad that you have decided to join us outdoors.

1-4 CAPE

5-8 CHARM

9-14 COVINGTON

15-26 DOLCE

27-30 FEZ

31-34 LIGURIA

35-42 MONACO

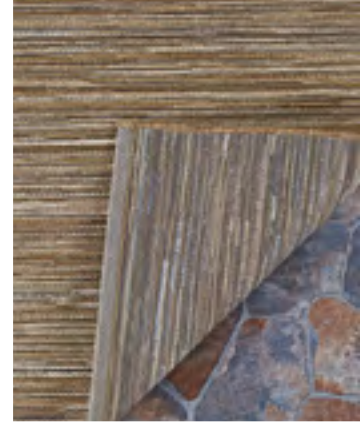
43-46 MONTE CARLO

47-50 NATURALISTIC™

51-64 RECIFE

CAPE COLLECTION





100% FIBER-ENHANCED COURTRON™ POLYPROPYLENE

HIGH/LOW STRUCTURED WEAVE

PROVIDES DURABLE PERFORMANCE IN HIGH-TRAFFIC
AREAS INSIDE AND OUTSIDE THE HOME

MOLD/MILDEW/WATER RESISTANT; UV STABILIZED

PET-FRIENDLY • PILE HEIGHT: NO PILE (FLAT WEAVE)

MADE IN BELGIUM

STOCKED SIZES

2' x 3'7"

3'11" x 5'6"

5'3" x 7'6"

6'6" x 9'6"

7'10" x 10'9"

2'3" x 7'10" & 2'3" x 11'9" Runner

All Sizes Are Approximate

This Collection
is available
to authorized
Brick-and-Mortar
and Ecommerce
Couristan Dealers.



CAPE COLLECTION



1403/0002
BROCKTON/COBALT-TEAL



1407/0009
HINSDALE/LIGHT BROWN-SILVER



1407/0020
HINSDALE/TEAL-COBALT



1407/0029
HINSDALE/BROWN-IVORY



1407/0066
HINSDALE/CRIMSON-MULTI



9835/5034
GABLES/SURF



9860/9006
FAYSTON/MULTI

CHARM COLLECTION





100% SPACE-DYED HEAT-SET COURTRON™ POLYPROPYLENE
FEATURING SOPHISTICATED MOTIFS
STRUCTURED FLATWOVEN CONSTRUCTION
SUITABLE FOR OUTDOOR/INDOOR USE
MOLD/MILDEW/WATER RESISTANT; UV STABILIZED
PET-FRIENDLY
PILE HEIGHT: NO PILE (FLAT WEAVE)
MADE IN TURKEY



STOCKED SIZES

2'2" x 4'3"

3'3" x 5'6"

5'3" x 7'6"

6'6" x 9'6"

7'10" x 10'9"

2'2" x 7'6" Runner

SPECIAL SHAPES

*6'6" & 7'10" Round

All Sizes Are Approximate

This Collection
is available
to authorized
Brick-and-Mortar
and Ecommerce
Couristan Dealers.

CHARM COLLECTION



2552/2082*
WOODBURN/IVORY-SAND



2553/2091*
OHE/SAND-IVORY



2554/2009*
BOTANICAL/ASH



2556/2091
YUKON/TWIG



2559/2007
TIVERTON/SAND-IVORY



2559/2009
TIVERTON/ANTHRACITE-LIGHT GREY



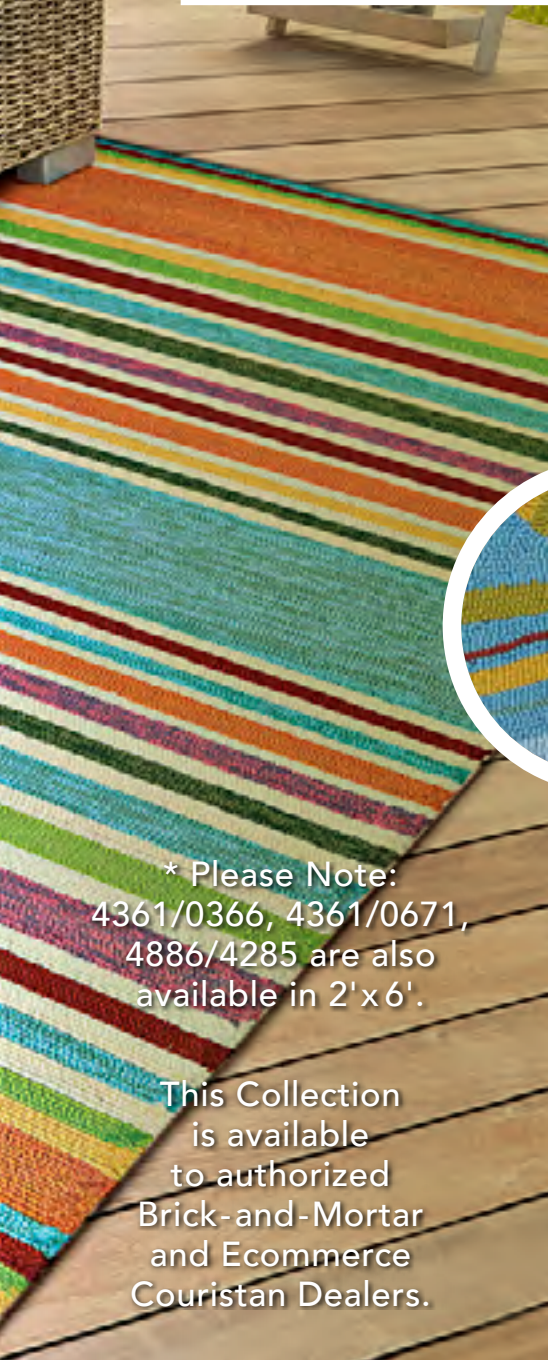
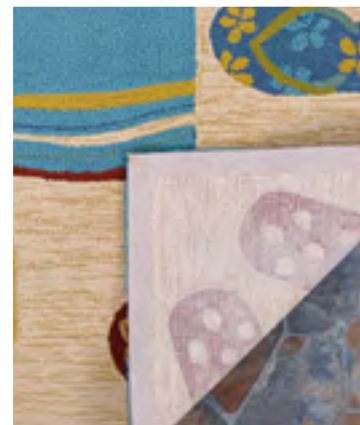
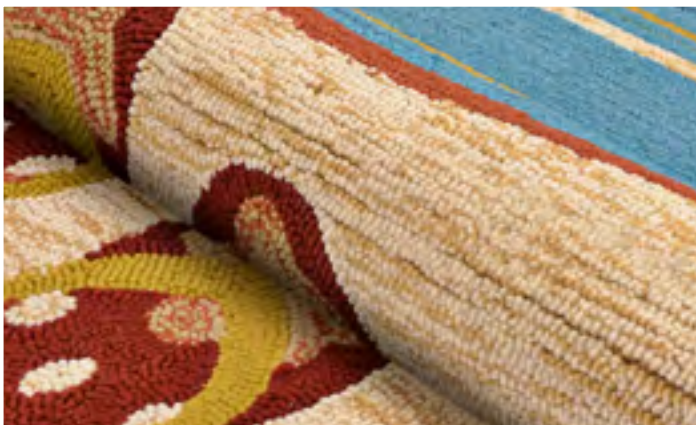
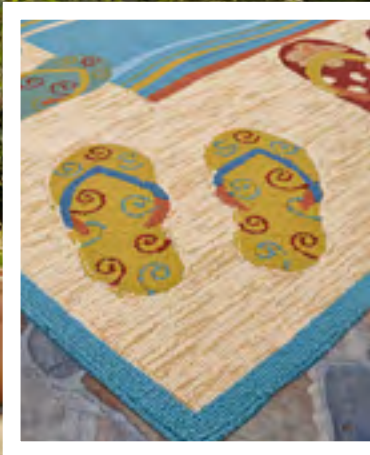
2640/0910
KIMBERLY/NATURALS



2663/0125
THICKET/TWIG

COVINGTON COLLECTION





100% FIBER-ENHANCED COURTRON™ POLYPROPYLENE

EXQUISITE HAND-HOOKED CONSTRUCTION

PROVIDES DURABLE PERFORMANCE IN FREQUENTLY USED SPACES INSIDE AND OUTSIDE THE HOME

MOLD/MILDEW/WATER RESISTANT; UV STABILIZED

APPROXIMATE PILE HEIGHT: .25"

HAND-HOOKED IN CHINA



STOCKED SIZES

2' x 4'

*2' x 6'

3'6" x 5'6"

5'6" x 8'

8' x 11'

2'6" x 8'6" Runner

SPECIAL SHAPES

7'10" Round

All Sizes Are Approximate

* Please Note:
4361/0366, 4361/0671,
4886/4285 are also
available in 2'x6'.

This Collection
is available
to authorized
Brick-and-Mortar
and Ecommerce
Couristan Dealers.

COVINGTON COLLECTION



2128/1009
SANDALS/SAND-MULTI



2129/1021
TROPICS GARDEN/SAND-MULTI



2263/0702
DELFINA/AZURE-LEMON



2296/3067
SHERBERT STRIPE/MULTI



COVINGTON COLLECTION



4092/0409
SEA WATER/OCEAN-AQUA



4098/4071
PAINTED FERN/FERN-RED



4361/0366*
ARECA PALMS/BROWN-FOREST GREEN



4361/0671*
ARECA PALMS/AZURE-FOREST GREEN



4886/4285*
TROPICAL ORCHID/AZURE-FOREST GREEN-RED

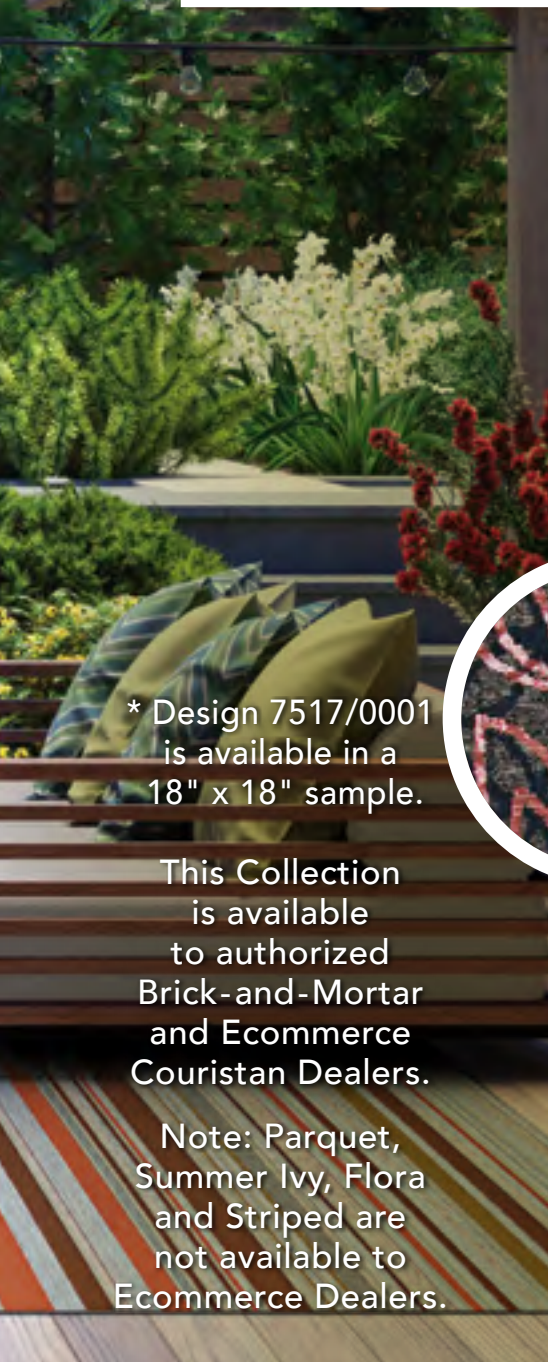


5356/3561
SUMMER LAELIA/IVORY-FERN



DOLCE COLLECTION





* Design 7517/0001 is available in a 18" x 18" sample.

This Collection is available to authorized Brick-and-Mortar and Ecommerce Couristan Dealers.

Note: Parquet, Summer Ivy, Flora and Striped are not available to Ecommerce Dealers.



100% FIBER-ENHANCED COURTRON™ POLYPROPYLENE WITH DURABLE POLYESTER

FEATURING A STRUCTURED TAPESTRY CONSTRUCTION

SUITABLE FOR OUTDOOR/INDOOR USE

MOLD/MILDEW/WATER RESISTANT; UV STABILIZED

PET-FRIENDLY • PILE HEIGHT: NO PILE (FLAT WEAVE)

MADE IN BELGIUM

STOCKED SIZES

2'3" x 3'11"

4' x 5'10"

5'3" x 7'6"

8'1" x 11'2"

8'6" x 13'

2'3" x 7'10" Runner

All Sizes Are Approximate

DOLCE COLLECTION



4039/0760
AMALFI/MULTI
Available in 8'6" x 13'.



4055/0234
NOVELLA/GREY
Available in 8'6" x 13'.



4078/7439
TIVOLI/IVORY-MULTI
Available in 8'6" x 13'.



5582/0582
MALA/SMOKE
Available in 8'6" x 13'.



5583/7439
FLORAL VINES/BEIGE-MULTI



5750/0003
AMUR LEOPARD/NEW GOLD



5755/0002
BENGAL/IVORY

DOLCE COLLECTION



5866/0866
BLUE NILE/INDIGO
Available in 8'6" x 13'.



7460/0007
FLOWERING FERN/IVORY-HUNTER GREEN
Available in 8'6" x 13'.



7506/0004
PALM LILY/HUNTER GREEN-IVORY
Available in 8'6" x 13'.



7508/0020
BAMBOO FOREST/FROST



DOLCE COLLECTION



7512/0045
SUMMER IVY/IVORY-OLIVE



7512/0845
SUMMER IVY/IVORY-SLATE BLUE



7512/1345
SUMMER IVY/IVORY-TERRA-COTTA



DOLCE COLLECTION



7515/1103
PARQUET/MOCHA



7515/2102
PARQUET/CHARCOAL



7515/3103
PARQUET/FERN
Not available in a runner.



7515/4104
PARQUET/AMBER
Not available in a runner.



7515/5105
PARQUET/INK
Not available in a runner.



DOLCE COLLECTION



7517/0001*
FLORA/SNOW



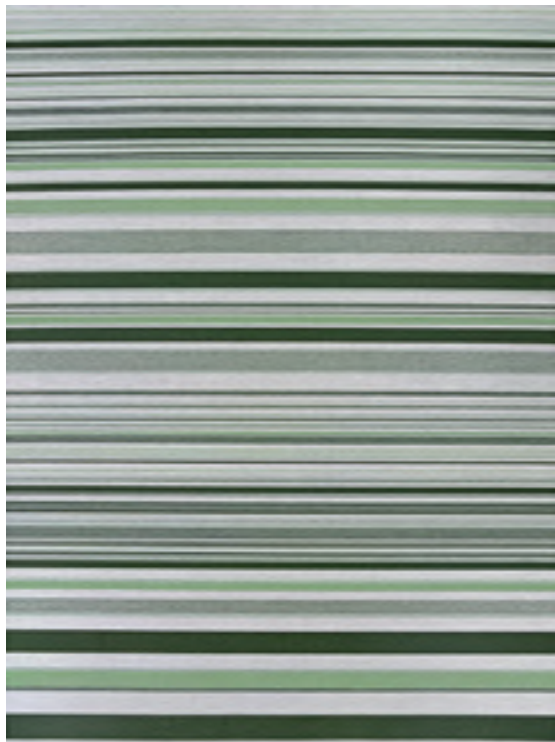
7517/2102
FLORA/NERO



7517/5001
FLORA/ARGENTO



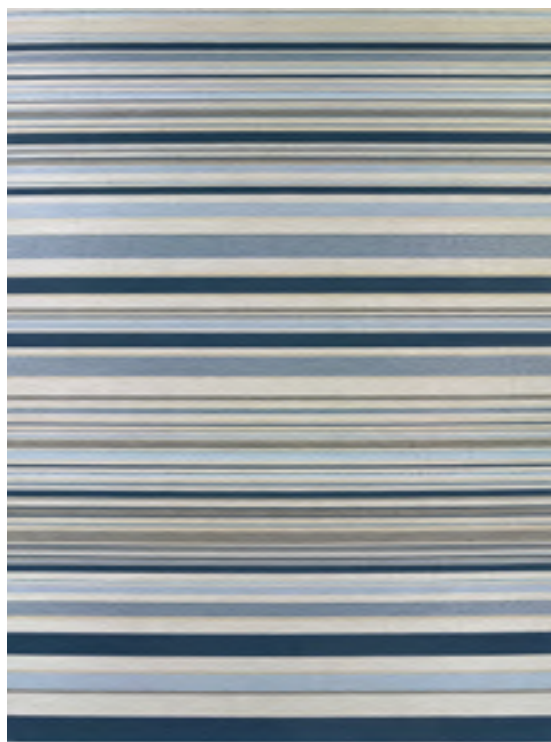
7517/5202
FLORA/ICE



7518/3303
STRIPED/GRASS



7518/4404
STRIPED/SUNSET



7518/5505
STRIPED/NAUTICAL

FEZ COLLECTION





MACHINE-WOVEN OF THE SOFTEST 100% POLYESTER, THESE RUGS ARE INSPIRED BY TURKISH ANTIQUES

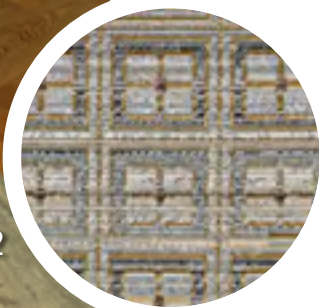
TRANSITIONAL AND SOFT CONTEMPORARY DESIGNS GIVE THESE ANYWHERE/EVERYWHERE RUGS THE ABILITY TO TOGGLE EFFORTLESSLY FROM INDOORS TO OUT

A WARM, EARTHY PALETTE ALLOWS THESE PIECES TO WORK IN ANY ENVIRONMENT FROM TRANSITIONAL TO TRADITIONAL TO CONTEMPORARY AND EVERYTHING IN BETWEEN

MOLD/MILDEW/WATER RESISTANT; UV STABILIZED

PILE HEIGHT: NO PILE (FLAT WEAVE)

MADE IN TURKEY



* Design FEZ5/5252 is available in a 18" x 18" sample.

This Collection is Only available to authorized Brick-and-Mortar Couristan Dealers.

STOCKED SIZES

5' x 7'10"

7'10" x 10'10"

9' x 12'

All Sizes Are Approximate

FEZ COLLECTION



FEZ1/3434
MEDINA/EARTHEN



FEZ2/7234
SIDI/SUNLIGHT



FEZ3/3434
SOUK/EARTHEN



FEZ4/1331
RIAD/ASH



FEZ4/2222
RIAD/SAND



FEZ4/6111
RIAD/TOBACCO



FEZ5/5252
PALAIS/STORM GREY

LIGURIA COLLECTION





MACHINE-WOVEN OF 100% COURTRON™ POLYPROPYLENE
IN A HIGH/LOW CONSTRUCTION EMULATING A HANDMADE
CUT/LOOP PILE TECHNIQUE

TRANSITIONAL AND SOFT CONTEMPORARY DESIGNS GIVE
THESE ANYWHERE/EVERYWHERE RUGS THE ABILITY TO TOGGLE
EFFORTLESSLY FROM INDOORS TO OUT

SOFT, NEUTRAL MOTIFS ARE HIGHLIGHTED BY SPACE-DYED
ACCENTS THAT WORK IN MULTIPLE ENVIRONMENTS

MOLD/MILDEW/WATER RESISTANT; UV STABILIZED

PILE HEIGHT: .157" • MADE IN TURKEY



* Designs LIG2/1212
and LIG3/2312 are
available in a
18" x 18" sample.

This Collection
is Only available
to authorized
Brick-and-Mortar
Couristan Dealers.

STOCKED SIZES

5'3" x 7'6"

6'6" x 9'6"

7'10" x 9'10"

9' x 12'1"

All Sizes Are Approximate

LIGURIA COLLECTION



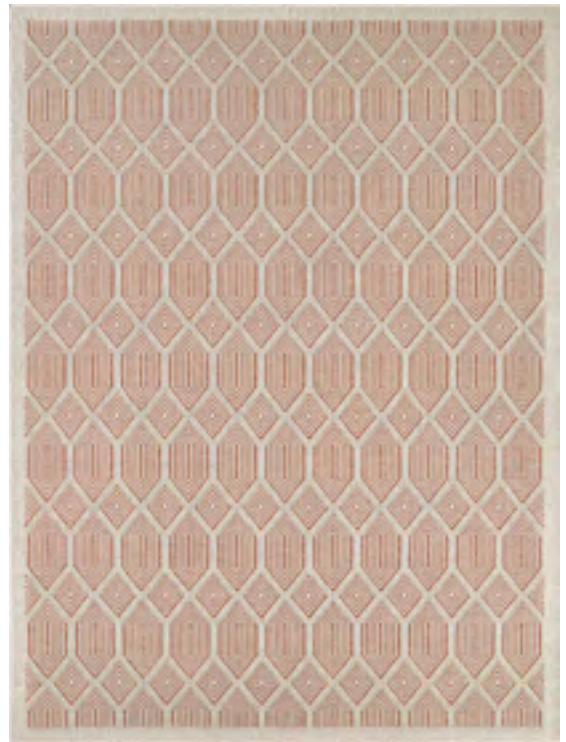
LIG1/1001
SARZANA/DOVE GREY



LIG2/1212
LEVANTO/AQUA



LIG3/1212
RAPALLO/AQUA



LIG3/2312
RAPALLO/UMBER



LIG3/3112
RAPALLO/PEBBLE



LIG4/1001
NOLI/DOVE GREY



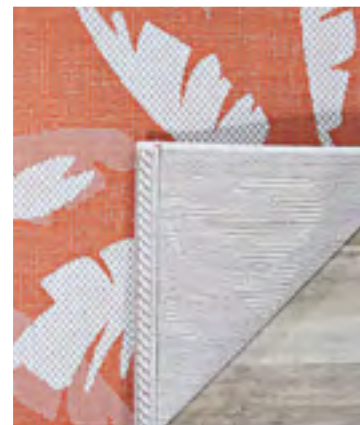
LIG4/1221
NOLI/AZUL



LIG4/2312
NOLI/UMBER

MONACO COLLECTION





100% FIBER-ENHANCED COURTRON™ POLYPROPYLENE
 FEATURING A STRUCTURED FLATWOVEN CONSTRUCTION
 SUITABLE FOR OUTDOOR/INDOOR USE
 MOLD/MILDEW/WATER RESISTANT; UV STABILIZED
 PET-FRIENDLY • PILE HEIGHT: NO PILE (FLAT WEAVE)
 MADE IN BELGIUM

STOCKED SIZES

2' x 3'7"

3'9" x 5'5"

5'3" x 7'6"

5'10" x 9'2"

7'6" x 10'9"

8'6" x 13'

2'3" x 7'10" & 2'3" x 11'9" Runner

All Sizes Are Approximate

This Collection
 is available
 to authorized
 Brick-and-Mortar
 and Ecommerce
 Couristan Dealers.

MONACO COLLECTION



2106/3136
SUMMER QUAY/IVORY-LIGHT GREEN



2106/3150
SUMMER QUAY/COCOA NATURAL



2158/3220
BOWLINE/COCOA NATURAL-IVORY



2216/3100
COASTAL FLORA/IVORY-TURQUOISE



MONACO COLLECTION



2216/3143
COASTAL FLORA/IVORY-SAPPHIRE



2216/3145
COASTAL FLORA/IVORY-ORANGE



2429/3108
TROPICAL PALMS/OCEAN



2429/3134
TROPICAL PALMS/AQUA



2470/2007
MERIDIAN/MULTI



6041/3107
MARBELLA/BLUE MIST-IVORY

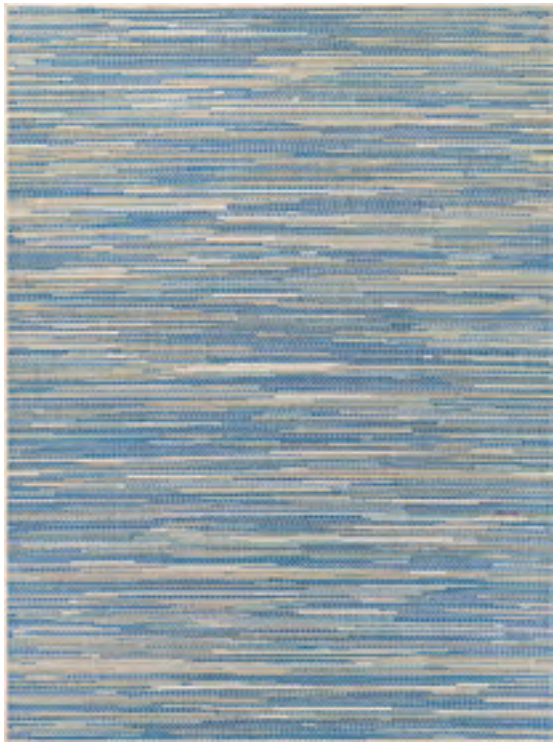


6041/3161
MARBELLA/IVORY-SAND-AZURE

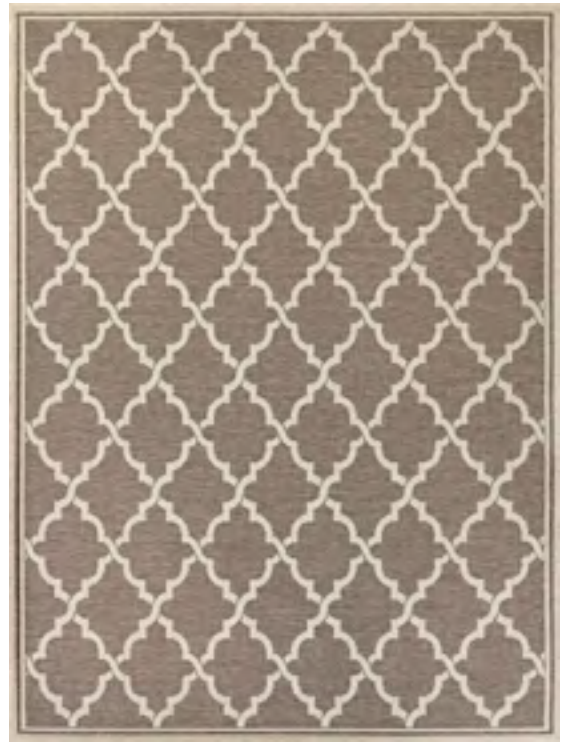


7847/1001
ALASSIO/SAND-MAROON-SALMON

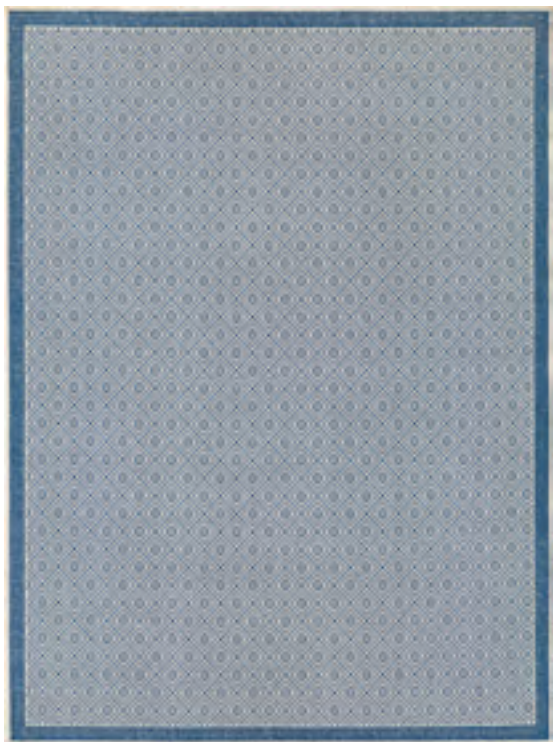
MONACO COLLECTION



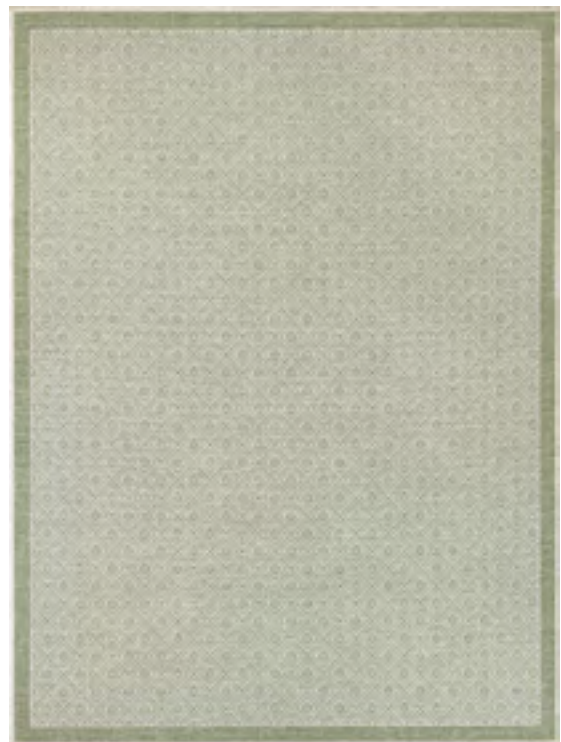
7847/1012
ALASSIO/SAND-AZURE-TURQUOISE



7881/1037
OCEAN PORT/TAUPE-SAND



7949/1235
SEA PIER/SAND-AZURE

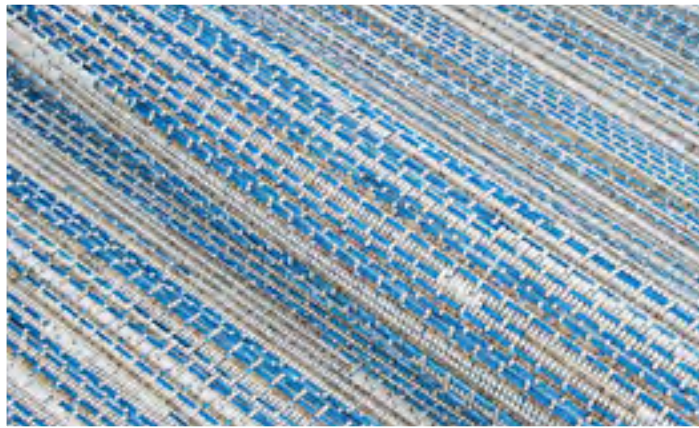


7949/1394
SEA PIER/SAND-SEA MIST



MONTE CARLO COLLECTION





100% FIBER-ENHANCED COURTRON™ POLYPROPYLENE
FEATURING A STRUCTURED FLATWOVEN CONSTRUCTION
SUITABLE FOR OUTDOOR/INDOOR USE
MOLD/MILDEW/WATER RESISTANT; UV STABILIZED
PET-FRIENDLY • PILE HEIGHT: NO PILE (FLAT WEAVE)
MADE IN BELGIUM



STOCKED SIZES

2' x 3'7"

3'9" x 5'5"

5'3" x 7'6"

5'10" x 9'2"

7'6" x 10'9"

8'6" x 13'

2'3" x 7'10" & 2'3" x 11'9" Runner

All Sizes Are Approximate

This Collection
is available
to authorized
Brick-and-Mortar
and Ecommerce
Couristan Dealers.

MONTE CARLO COLLECTION



2329/4716
PALMETTE/GREY-IVORY



2329/6427
PALMETTE/NAVY-IVORY



2331/6427
SUMMER VINES/NAVY-IVORY



2333/2406
COASTAL BREEZE/OCEAN-CHAMPAGNE

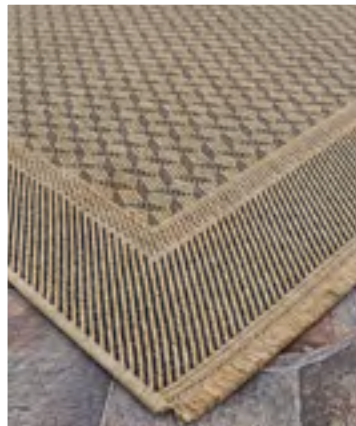


2333/3246
COASTAL BREEZE/TAUPE-CHAMPAGNE



NATURALISTIC™ COLLECTION





90% COURTRON™ POLYPROPYLENE / 10% POLYESTER

STRUCTURED FLATWOVEN CONSTRUCTION,
SUITABLE FOR OUTDOOR/INDOOR USE

TRIBAL PATTERNS IN NATURAL TONES

FRINGE INCORPORATED INTO EACH AREA RUG;
(ROUNDS ARE NOT AVAILABLE WITH FRINGE)

PERFECT FOR PATIOS, DECKS, KITCHEN AREAS,
SUNROOMS AND ENTRYWAYS

MOLD/MILDEW/WATER RESISTANT; UV STABILIZED

PET-FRIENDLY

PILE HEIGHT: NO PILE (FLAT WEAVE)

MADE IN TURKEY



STOCKED SIZES
WITH FRINGE

5'3" x 7'6"

6'6" x 9'6"

7'10" x 10'

2'7" x 9'10" Runner

SPECIAL SHAPES

5'3" & 7'10" Round

All Sizes Are Approximate

This Collection
is available
to authorized
Brick-and-Mortar
and Ecommerce
Couristan Dealers.

NATURALISTIC™ COLLECTION



3701/1001
MOROCCAN/NATURAL-BROWN



3702/1002
SONORAN/NATURAL-CHARCOAL



3703/1003
RATTAN/NATURAL-CREAM



3704/1001
ADOBE/NATURAL-BROWN



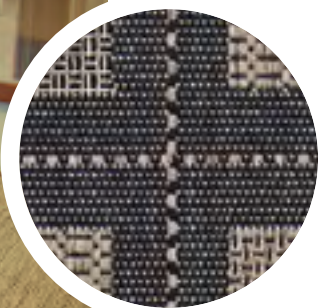
3705/1004
SYMMETRY/NATURAL-BLACK







This Collection is available to authorized Brick-and-Mortar and Ecommerce Couristan Dealers.



100% FIBER-ENHANCED COURTRON™ POLYPROPYLENE
FEATURING A STRUCTURED FLATWOVEN CONSTRUCTION
SUITABLE FOR OUTDOOR/INDOOR USE
MOLD/MILDEW/WATER RESISTANT; UV STABILIZED
PET-FRIENDLY • PILE HEIGHT: NO PILE (FLAT WEAVE)

MADE IN BELGIUM

STOCKED SIZES

2' x 3'7"

3'9" x 5'5"

5'3" x 7'6"

5'10" x 9'2"

7'6" x 10'9"

8'6" x 13'

2'3" x 7'10" & 2'3" x 11'9" Runner

SPECIAL SHAPES

7'6" & 8'6" Round / 7'6" & 8'6" Square

All Sizes Are Approximate

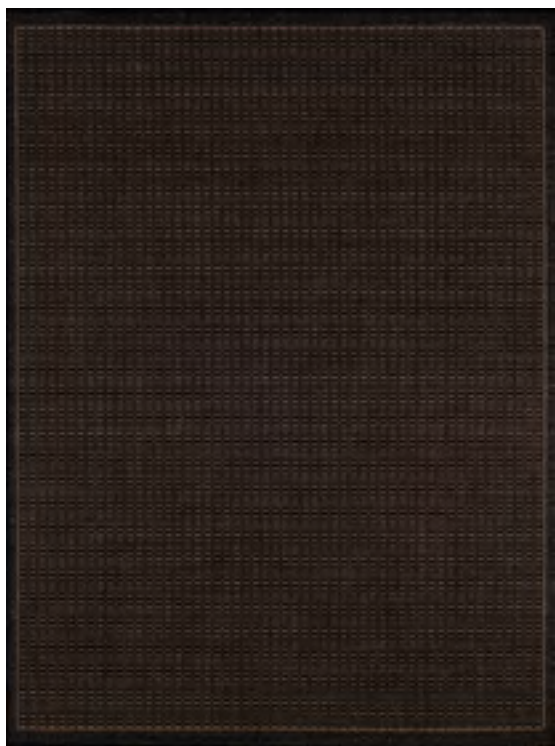
RECIFE COLLECTION



1001/1212
SADDLE STITCH/CHAMPAGNE-BLUE



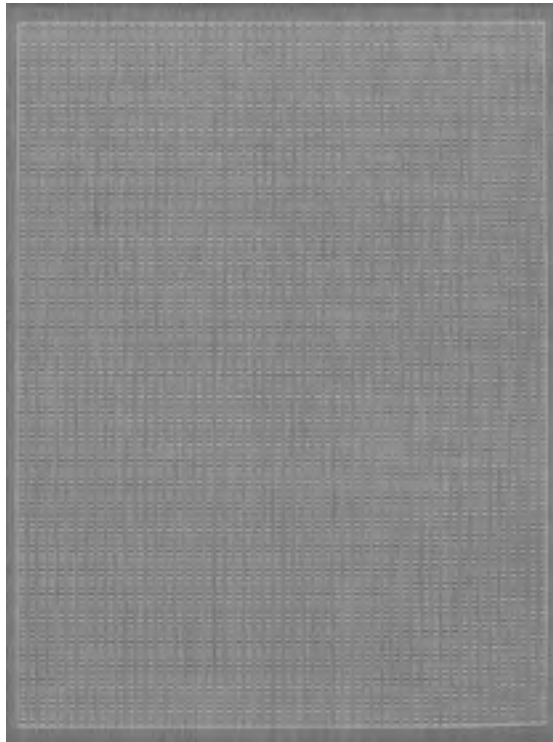
1001/1500
SADDLE STITCH/COCOA-NATURAL



1001/2000
SADDLE STITCH/BLACK-COCOA



1001/2312
SADDLE STITCH/CHAMPAGNE-TAUPE



1001/3012
SADDLE STITCH/GREY-WHITE



1001/4000
SADDLE STITCH/TERRA-COTTA-NATURAL



1001/6500
SADDLE STITCH/IVORY-INDIGO



1005/2000
CHECKERED FIELD/BLACK-COCOA

RECIFE COLLECTION



1005/2500
CHECKERED FIELD/COCOA-BLACK



1005/3000
CHECKERED FIELD/NATURAL-COCOA



1005/3012
CHECKERED FIELD/GREY-WHITE



1005/5005
CHECKERED FIELD/NATURAL-GREEN



RECIFE COLLECTION



1016/2000
GARDEN LATTICE/COCOA-BLACK



1043/2500
SUMMIT/COCOA-BLACK



1078/3115
ANTIQUE MEDALLION/BLACK-COCOA



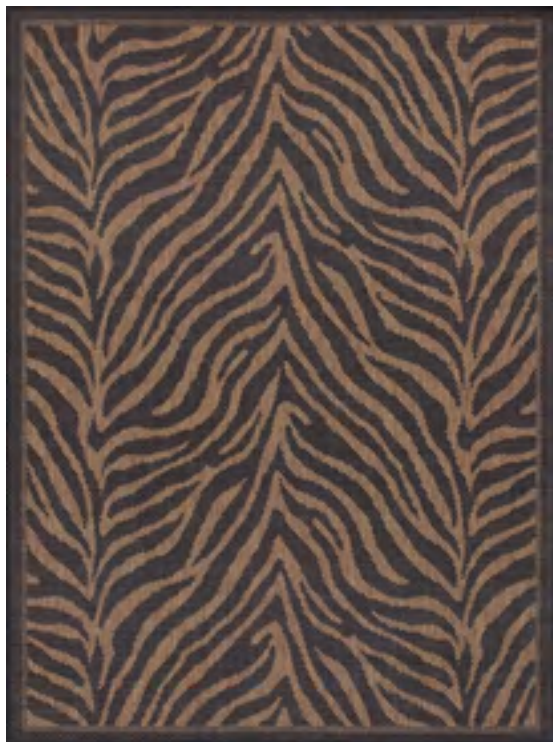
1222/0722
ISLAND RETREAT/BEIGE-NATURAL



1222/1122
ISLAND RETREAT/TERRA-COTTA-NATURAL



1318/2550
CABANA TILE/DRIFTWOOD-BLACK



1514/0121
ZEBRA/BLACK-COCOA



1516/0111
GARDEN COTTAGE/BLACK-COCOA

RECIFE COLLECTION



1562/0154
SEAGRASS/NATURAL-BLACK



1583/1212
VERANDA/CHAMPAGNE-BLUE



1583/2312
VERANDA/CHAMPAGNE-TAUPE



1583/2500
VERANDA/COCOA-BLACK



1583/6500
VERANDA/IVORY-INDIGO



1588/1021
ELEPHANT/COCOA-BLACK



1681/1500
WICKER STITCH/COCOA-NATURAL



1681/2000
WICKER STITCH/BLACK-COCOA

RECIFE COLLECTION



1681/2500
WICKER STITCH/COCOA-BLACK



1682/6500
ROPE KNOT/IVORY-INDIGO



1684/1900
GARDEN KEY/SAGE-CHAMPAGNE



5313/1212
GAZEBO STRIPE/CHAMPAGNE-BLUE



RECIFE COLLECTION



5313/2312
GAZEBO STRIPE/CHAMPAGNE-TAUPE



5313/3312
GAZEBO STRIPE/CHAMPAGNE-GREY



5526/0712
STRIA TEXTURE/NATURAL-COFFEE



5526/1112
STRIA TEXTURE/NATURAL-TERRA-COTTA



5526/1212
STRIA TEXTURE/CHAMPAGNE-BLUE



5526/1812
STRIA TEXTURE/NATURAL-GREEN



5526/2312
STRIA TEXTURE/CHAMPAGNE-TAUPE

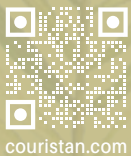


5526/3312
STRIA TEXTURE/CHAMPAGNE-GREY



TWO EXECUTIVE DRIVE, FORT LEE, NEW JERSEY 07024 • 800.223.6186 • COURISTAN.COM

Wall-To-Wall Carpet • Area Rugs • Roll Runners • Custom Rugs



couristan.com



SEPTEMBER 2024