



VOLUME 1

Bromley - Marina



COURISTAN®

LIMITED EDITION COLLECTIONS & DESIGNS

MACHINE-MADE





TABLE OF CONTENTS

BROMLEY COLLECTION	1-5
CALEDONIA COLLECTION	6-8
COUTURE COLLECTION	9-12
DREAMSCAPE COLLECTION	13-14
EASTON COLLECTION	15-25
EUROPA COLLECTION	26-27
EVEREST COLLECTION	28-31
GYPSY COLLECTION	32-36
HALLI COLLECTION	37-39
KALEIDOSCOPE COLLECTION	40-42
LUXOR COLLECTION	43-45
MARINA COLLECTION	46-52





BROMLEY COLLECTION

A Blend of Wool, Polypropylene and Polyester

STOCKED SIZES

2' x 3'11" | 3'11" x 5'6" | 5'3" x 7'6" | 7'10" x 11'2" | 9'2" x 12'9"

2'2" x 7'10" Runner

** Design available in a 18" x 18" sample.*

ALL SIZES ARE APPROXIMATE

Featuring a Plush, Heavy Surface Pile

Thickness of Differing Fiber
Usage Creates a Unique Textured
Appearance and Feel

Solids and Moroccan-Inspired Designs

Pile Height: 1.81"

Power-Loomed in Belgium

BROMLEY COLLECTION



3721/0373
TAIGA/FROST-IVORY



4311/0100 *
BRECKENRIDGE/SNOW



4311/0110
BRECKENRIDGE/FROST



4311/0120
BRECKENRIDGE/BRONZE

BROMLEY COLLECTION



4311/0509
BRECKENRIDGE/NAVY-GREY



4311/0910
BRECKENRIDGE/COPPER



4311/0920
BRECKENRIDGE/ASH



4314/0910
DIAMONDBACK/MULTI-IVORY

BROMLEY COLLECTION



4315/0102 *
PINNACLE/IVORY-CAMEL



4315/0600 *
PINNACLE/CAMEL-IVORY



4316/0336 *
DAVOS/SNOW-BROWN



4317/0106 *
WHISTLER/BLUE-SNOW

BROMLEY COLLECTION



4319/2358
NOVIA/IVORY-CARAMEL-BLACK



4331/7459 *
GIO/NAVY-GREY



4353/3159 *
JAKARTA/IVORY-CARAMEL-BLACK



4357/5100 *
KYOTO/SNOWFLAKE-BRONZE



CALEDONIA COLLECTION

Machine-Woven Base of 100% Polyester

STOCKED SIZES

5' x 8' | 8' x 10' | 9' x 12' | 2' x 8' Runner

** Design available in a 18" x 18" sample.*

ALL SIZES ARE APPROXIMATE

Digitally Printed Motifs
with a Non-Skid Backing

Saddle-Stitched Edges

A Gorgeous Collection of Printed Area Rugs
that Feature Tropical Florals Inspired
by Sunsets Over Crystal Clear Lakes

Pile Height: .275"

Made in China

CALEDONIA COLLECTION



5558/5158 *
EDEN/MAGENTA-HAZE



5559/5159
ARCADIA/PEONY



5560/5160
KAMLA/PLUMERIA



5561/5161
TANGIERS/AQUAMARINE

CALEDONIA COLLECTION



5562/5162

RHAPSODY/HONEYSUCKLE



COUTURE COLLECTION

100% Space-Dyed Polyester

STOCKED SIZES

2' x 3'7" | 3'9" x 5'5" | 5'3" x 7'6" | 7'10" x 10'9" | 9'10" x 13'9"

2'2" x 8'11" Runner | 2'7" x 12' Runner

* Design available in a 18" x 18" sample.

ALL SIZES ARE APPROXIMATE

Cross-Woven on Wilton Looms
for a Full Range of Colors and
a Unique Abrash Effect

Traditional Chobi-Inspired Designs
Elegantly Colored in a Soft Yet Vibrant Palette

Pile Height: .275"

Power-Loomed in Turkey

COUTURE COLLECTION



6755/6775 *
AQUARELLE/PEWTER-MODE BEIGE



6765/8700
BALLERINE/BURNISHED GOLD-DENIM



6765/8762 *
BALLERINE/CAROLINA



6791/3775
PERSIAN HERAT/DUSTY GREY-BEIGE

COUTURE COLLECTION



6795/6759 *
BORDADO/LIGHT GREY-MULTI



6797/7194
PERSIAN TILES/PEWTER-MODERN BEIGE



6798/6491
PERSIAN GARDEN/PEWTER-MODERN BEIGE



6799/3775
KHORASSAN/DUSTY GREY-BEIGE

COUTURE COLLECTION



6930/6695 *
RENAISSANCE/PEWTER-MODE BEIGE



DREAMSCAPE COLLECTION

100% Polyester That Provides a Faux Rabbit Fur Softness

STOCKED SIZES

5' x 8' | 8' x 11' | 2'6" x 8' Runner

** Design available in a 18" x 18" sample.*

ALL SIZES ARE APPROXIMATE

Machine Woven Base
with a Non-Skid Backing

A Unique Collection of Digitally Printed Abstract
and Watercolor Designs Highlighted in a
Combination of Fresh and Soothing Colors

Perfect for Bedrooms, Living Rooms
and Family Rooms

Pile Height: .275"

Made in China

DREAMSCAPE COLLECTION



D101/3322
HORIZON/BLUE-IVORY



D102/2233
WATERCOLORS/IVORY-GREY



D103/1241
ODYSSEY/GREY-SKY



D104/1234 *
TRANQUIL/GREY-MOCHA



EASTON COLLECTION

100% Heat-Set Courtron™ Ultra-Fine Polypropylene

STOCKED SIZES

2' x 3'7" | 3'11" x 5'3" | 5'3" x 7'6" | 6'6" x 9'6" | 7'10" x 11'2" | 9'2" x 12'5"
2'7" x 7'10" Runner

* Design available in a 18" x 18" sample.

ALL SIZES ARE APPROXIMATE

Face-to-Face Wilton Woven

Designs are Created Using a Multi Point
and Loom-Carved Technique

Soft Luxurious Finish In Excess of a
Million Points of Yarn Per Square Meter

Pile Height: .35"

Power-Loomed in Belgium

EASTON COLLECTION



6327/6823 *
SUFFOLK/BLACK-GREY



6335/6343 *
WINSLET/BEIGE-BLACK



6337/3282
ADALINE/ESPRESSO-CREAM



6339/6343
TALON/BEIGE-NATURALS

EASTON COLLECTION



6342/6151 *
SURREY/BONE-MULTI



6342/6282
SURREY/BONE-EARTHTONES



6343/6151
DISTRESS PLANKING/BARK-NATURAL



6343/8282
DISTRESS PLANKING/MOSS-DENIM

EASTON COLLECTION



6347/4343
SKYSCRAPER/BONE-NATURALS



6354/6696
CASTLE BLOCKS/STONE



6356/3747
SAND ART/DUSK



6371/5161
TALAVERA/AQUARIUS

EASTON COLLECTION



6387/5685
ABSTRACT MURAL/STUCCO



6387/5897
ABSTRACT MURAL/ANTIQUE CREAM



6398/9191
SHIMMERING/BONE-MULTI



6454/7307
VIBRATO/TAN-TEAL



EASTON COLLECTION



6539/6979
WINDWARD/NATURAL-SHADOW



6575/7311
SYNCHRONY/TAN-TEAL



6590/4343
MIRADOR/GREY



6590/6848
MIRADOR/MULTI

EASTON COLLECTION



6591/6829
CALIENTE/MULTI



6594/6424
CAMILLA/ANTIQUE CREAM-GREY



6597/3848
MOSAIC FLORALS/MULTI



6598/4848
PHOENIX/IVORY-SALMON

EASTON COLLECTION



6815/4343
MARIBEL/IVORY-GREY



6815/6454
MARIBEL/ANTIQUÉ CREAM-GREY



6815/8080
MARIBEL/MUSTARD-MULTI



6822/3353 *
CAPELLA/BLACK-GREY

EASTON COLLECTION



6843/9191
WATERCOLORING/BONE-MULTI



6877/6353
PRESCOTT/IVORY-BLACK-GREY



6989/9861
CITY BRICKS/GRAFFITI BLUE



7392/5454
MAYNARD/ANTIQUÉ CREAM-TEAL

EASTON COLLECTION



7392/8868
MAYNARD/ANTIQUE CREAM-SALMON



7928/4848 *
ZEN/EARTHTONES



7964/4488
VIBE/DUSK



EUROPA COLLECTION

100% Ultra-Soft Polyester

STOCKED SIZES

2' x 3'11" | 3'3" x 5'6" | 5'3" x 7'6" | 6'7" x 9'6" | 7'10" x 10'9" | 9'10" x 13'
2'2" x 7'7" Runner

All designs are available in a 18" x 18" sample.

ALL SIZES ARE APPROXIMATE

Face-to-Face Wilton Woven

Elegant Abstract Designs are Highlighted
in Poly-Viscose

Each Design has a Subtle Sheen
and a High/Low Texture

Pile Height: .275"

Power-Loomed in Turkey

EUROPA COLLECTION



0487/4807
GANYMEDE/GALAXY



0945/9540
ELARA/MIST



0955/9505
HIMALIA/LUNA GREY



EVEREST COLLECTION

100% Heat-Set Courtron™ Polypropylene

STOCKED SIZES

2' x 3'7" | 3'11" x 5'3" | 5'3" x 7'6" | 7'10" x 11'2" | 9'2" x 12'5"

2'7" x 7'10" Runner

* Design available in a 18" x 18" sample.

ALL SIZES ARE APPROXIMATE

Face-to-Face Wilton Woven

One Million Points of Yarn
Per Square Meter

Soft, Luxurious Finish

Pile Height: .35"

Power-Loomed in Belgium and Bulgaria

EVEREST COLLECTION



0766/6398
HAMPTONS/SAGE



1285/9577
CUBICS/NEW KHAKI



6033/6323
GRAPHITE/SEA MIST



6303/4343
GEOMETRICS/BROWN-MULTI

EVEREST COLLECTION



6303/6454
GEOMETRICS/TAN-TEAL



6316/6333
RETRO DAMASK/GREY-BLACK



6374/6636
BOHEMIA/DENIM-IVORY



6374/6757 *
BOHEMIA/GREYSTONE-LIME

EVEREST COLLECTION



6378/6575
STONE HARBOR/GREY



8972/3363
ROSETTA/EBONY



9126/0619
ZION/BLACK-TEAL



GYPSY COLLECTION

100% Heat-Set Courtron™ Polypropylene

STOCKED SIZES

3'6" x 5'6" | 5'3" x 7'6" | 8' x 10'9" | 2'3" x 7'6" Runner

ALL SIZES ARE APPROXIMATE

Cross-Woven on Wilton Looms

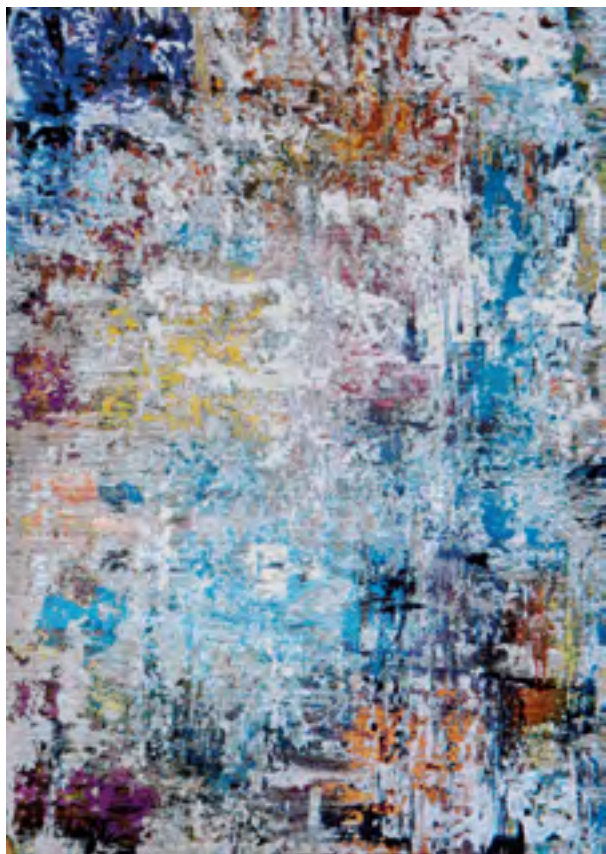
Each Traditional and Contemporary Design
is Harmonized in a Carefully Sequenced
Palette of Up to 48 Modern Hues

Soft, Low Pile

Pile Height: .354"

Power-Loomed in Turkey

GYPSY COLLECTION



AV29/0228
AQUARELLE/BONE-MULTI



AV30/0227
ARTISTS PALETTE/OYSTER-MULTI



AV32/0236
STREET ART/BONE-MULTI



AV30/0300
SAFAVID/BONE-MOCHA

GYPSY COLLECTION



AY38/0102
PERSIAN MEDALLION/DARK GREY-IVORY



AY72/0724
HAFIZ/ANTIQUÉ RED



AY76/0617
NAMEH/BLUE TOPAZ



AY76/0761
NAMEH/BONE

GYPSY COLLECTION



AY96/0965
ABBAS/MIRAGE



A035/0232
ROYALE/MOCHA-MULTI



A168/0273
ELY/AQUA-MULTI-IVORY



A700/0287
COLOGNE/BROWN-MULTI

GYPSY COLLECTION



A711/0233

RETRO DAMSEL/IVORY-MUSHROOM-MULTI



A765/0233

REIMS/MAGENTA-BONE



HALLI COLLECTION

100% Modified Polyester

STOCKED SIZES

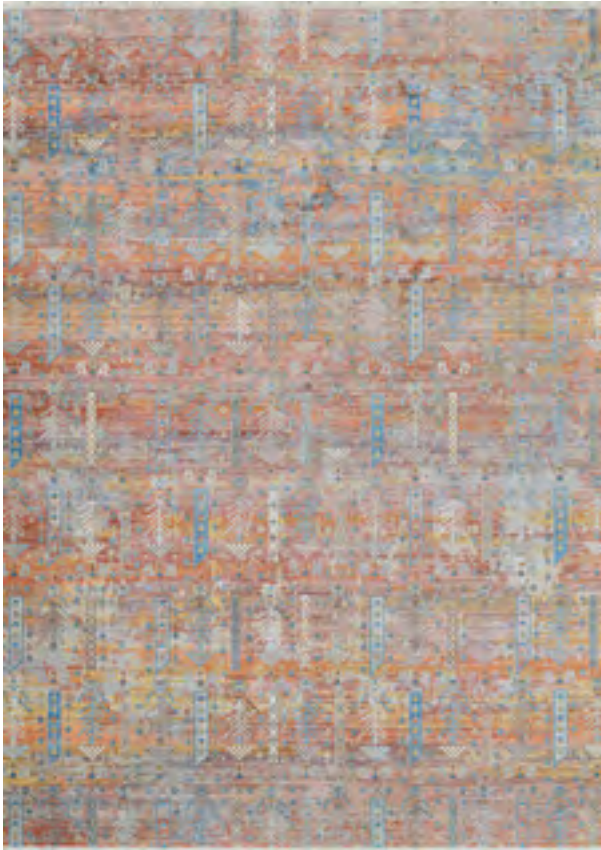
5'3" x 7'6" | 8' x 10' | 8'6" x 13'6" | 9' x 12' | 2'6" x 8' Runner

* Design available in a 18" x 18" sample.

ALL SIZES ARE APPROXIMATE

Cross-Woven on Wilton Looms
Allowing For Up to 72 Colors Per Design
500,000 Points of Yarn Per Square Meter
Modern Classic Designs in a Multitude of Colors
Cotton Backing
Pile Height: .275"
Power-Loomed in Turkey

HALLI COLLECTION



H676/4001 *
BAKTIARI/BRICK-HONEY-MULTI



H708/1100 *
PERSIAN PANEL/SKY BLUE-STONE-MULTI



H723/3001 *
BOKHARA/STONE-BRICK-MULTI



H725/2001
GABBEH/PLATINUM

HALLI COLLECTION



H840/1102
MODERN EDGE/BLUE SKY-MULTI



H869/2001
FLORAL KASHAN/BEIGE-MOCHA



KALEIDOSCOPE COLLECTION

100% Polyester

STOCKED SIZES

2' x 3'11" | 5'3" x 7'6" | 7'10" x 10'10" | 9'2" x 12'3"

ALL SIZES ARE APPROXIMATE

Face-to-Face Wilton Woven
Machine-Crafted with a Unique Blend
of Polyester Yarns

Featuring Shrink Yarn Accents
to Add a High/Low Texture

Ethnic and Abstract Designs

Pile Height: .354"

Power-Loomed in Turkey

KALEIDOSCOPE COLLECTION



0023/0233
EMPYREAN/NIGHTFALL



0024/0420
SABALAN/MIRAGE



0897/0877
JAVA/GINGER



5549/0549
PENUMBRA/ECLIPSE

KALEIDOSCOPE COLLECTION



6600/0600
CELESTIAL/OASIS



LUXOR COLLECTION

A Unique Blend of Polyester, Viscose and Space-Dyed Yarn

STOCKED SIZES

3'9" x 5'4" | 5'3" x 7'6" | 7'10" x 10'9" | 9'10" x 13'9"

2'2" x 8'11" Runner | 2'7" x 12' Runner

** Design available in a 18" x 18" sample.*

ALL SIZES ARE APPROXIMATE

Cross-Woven on Wilton Looms

One Million Points of Yarn Per Square Meter

Each Design Emulates a Fine Handmade Area Rug with Their Thick, Textured Pile and Antique Fringe

Pile Height: .314"

Power-Loomed in Turkey

LUXOR COLLECTION



8152/0130 *
CAMPAGNE/MULTI-ANTIQUE BEIGE-GREYSTONE



8175/0110 *
BONAPARTE/MULTI-ANTIQUE BEIGE

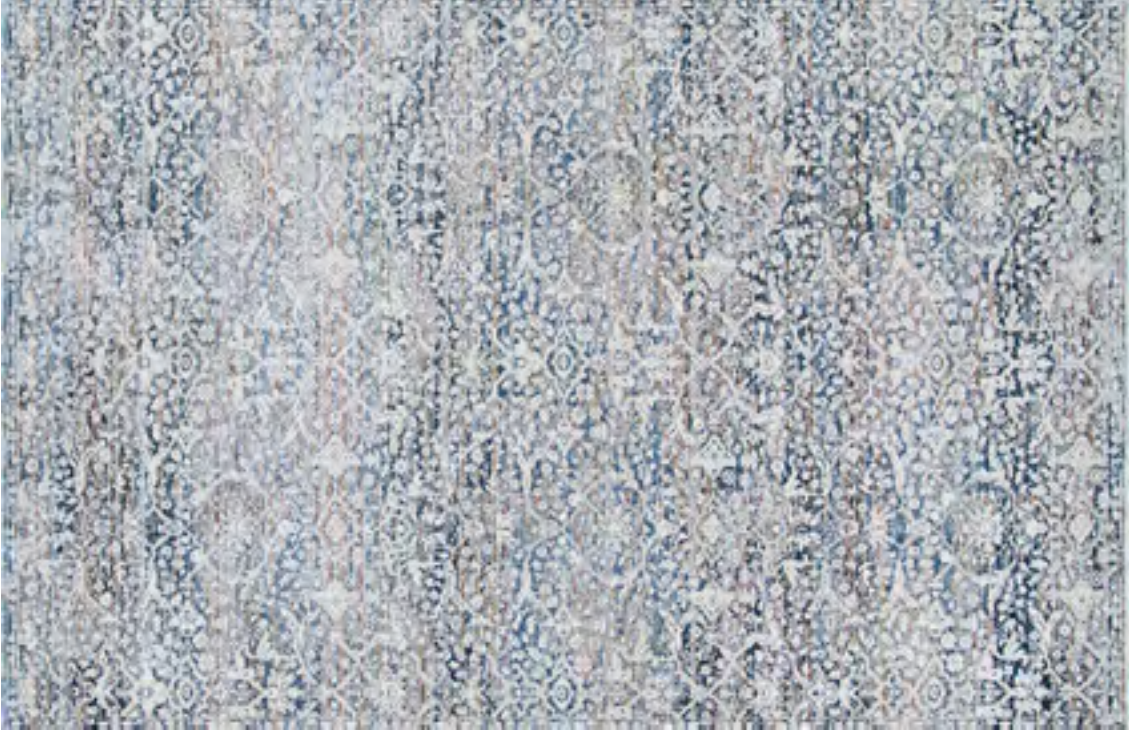


8188/0150
SAROUQUE/BEIGE-MULTI



8190/0248
ANTIQUÉ TABRIZ/ANTIQUÉ IVORY-GOLD

LUXOR COLLECTION



8268/0120 *
LUDVIG/MULTI-ANTIQUÉ BEIGE-OCEAN



8283/0140 *
BAROCCO/MULTI-ANTIQUÉ BEIGE-PEWTER



MARINA COLLECTION

100% Heat-Set Courtron™ Polypropylene

STOCKED SIZES

2' x 3'11" | 3'11" x 5'6" | 5'3" x 7'6" | 6'6" x 9'6" | 7'10" x 10'9"
9'2" x 12'9" | 2'2" x 7'10" Runner

* Design available in a 18" x 18" sample.

ALL SIZES ARE APPROXIMATE

Face-to-Face Wilton Woven
Designs are Created Using a Drop Stitch
and Double Point Weaving Technique

Soft, Luxurious Finish
In Excess of a Million Points of
Yarn Per Square Meter

Pile Height: .393"
Power-Loomed in Belgium

MARINA COLLECTION



1256/0110 *
SIENA/CHAMPAGNE



1257/0719 *
SHIBORI/OYSTER-IVORY



1258/0911
MENDENHALL/SNOWCAP-GREY



1259/0225
GRISAILLE/CONFEDERATE GREY-IVORY

MARINA COLLECTION



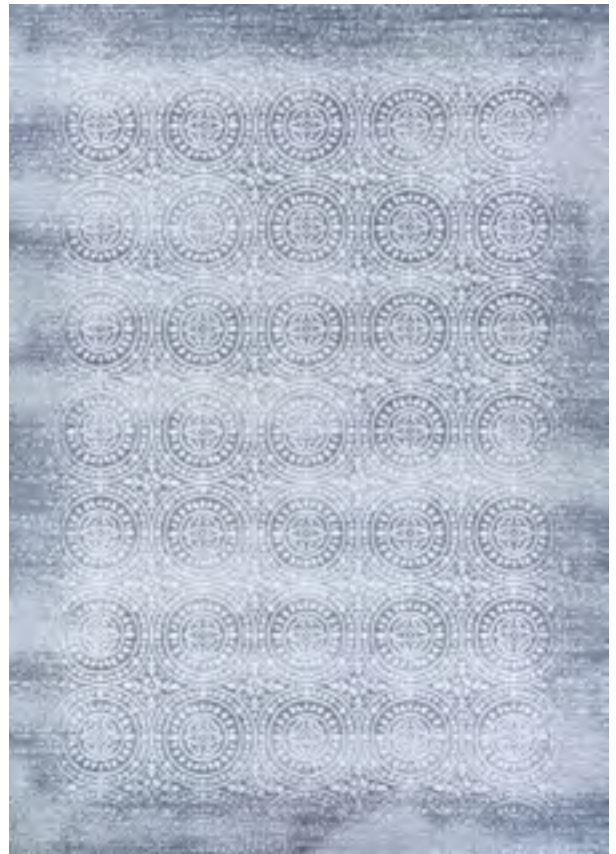
1259/0910
GRISAILLE/PEARL-CHAMPAGNE



1261/0505
RIVER ROCKS/GREY-IVORY

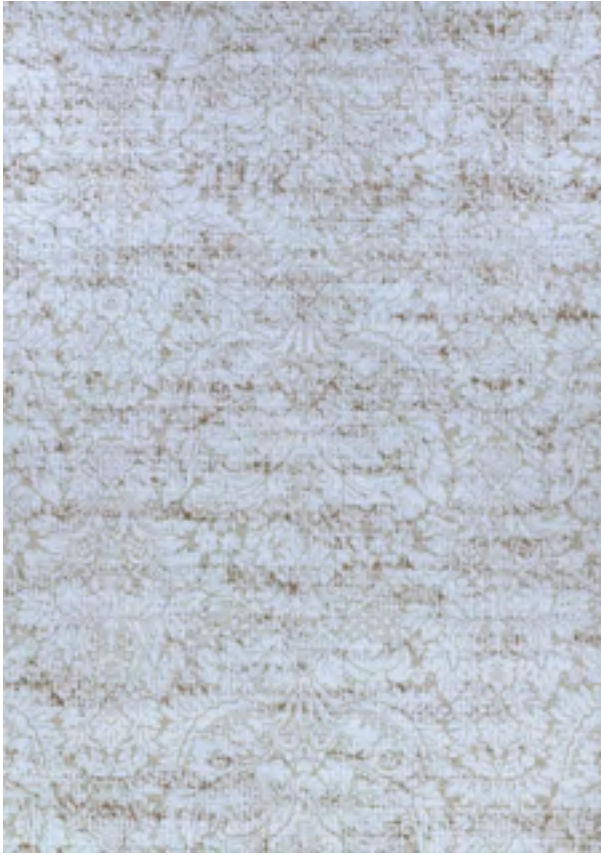


1264/0115
GARDEN PATCHWORK/OYSTER-PEARL



1267/0525
UNISON/SLATE BLUE-PEARL

MARINA COLLECTION



1339/1230
MONTAGUE/OAK



1339/1399
MONTAGUE/BIRCH



1339/1911
MONTAGUE/HICKORY



8961/0100 *
MALTA/CHAMPAGNE

MARINA COLLECTION



8962/0110 *
IBIZA/CHAMPAGNE



8963/0100
CAPRI/OYSTER



8964/0900
CYPRUS/OYSTER-PEARL



8964/0910
CYPRUS/PEARL-CHAMPAGNE

MARINA COLLECTION



8965/0130 *
CANNES/CHAMPAGNE



8967/0902
VALETTA/PEARL



8973/0672 *
RIMINI/PEARL-CHAMPAGNE



8976/0515 *
GARDEN GATE/OYSTER-SLATE BLUE





TWO EXECUTIVE DRIVE, FORT LEE, NEW JERSEY 07024 • 800.223.6186 • COURISTAN.COM

WALL-TO-WALL CARPET • AREA RUGS • ROLL RUNNERS • CUSTOM RUGS



couristan.com



September 2024