



**VOLUME 2**

Nirvana - Zahara



**COURISTAN®**

LIMITED EDITION COLLECTIONS & DESIGNS  
*MACHINE-MADE*





# TABLE OF CONTENTS

---

NIRVANA COLLECTION	1-3
NOMAD COLLECTION	4-5
OLD WORLD CLASSICS COLLECTION	6-10
PASHA COLLECTION	11-13
PRAIRIE COLLECTION	14-16
PRAIRIE HIDES COLLECTION	17-18
RAINBOW COLLECTION	19-20
SAVOY COLLECTION	21-23
SERENITY COLLECTION	24-25
SIENA COLLECTION	26-28
SULTAN TREASURES COLLECTION	29-31
VIBRATA COLLECTION	32-35
ZAHARA COLLECTION	36-40



# NIRVANA COLLECTION

*A Unique Blend of 70% Heat-Set Courtron™ Polypropylene and 30% Shrink Polyester*

## STOCKED SIZES

3'3" x 5'3" | 5'3" x 7'6" | 6'6" x 9' | 9'10" x 13'2" | 2'7" x 7'10" Runner

*\* Design available in a 18" x 18" sample.*

ALL SIZES ARE APPROXIMATE

Face-to-Face Wilton Woven

Traditional-Inspired Designs Recreated with a Soft and Soothing Color Palette

Surface Pile Provides a Soft Underfoot with the Added Element of High/Low Texture

Pile Height: .275"

Power-Loomed in Turkey

# NIRVANA COLLECTION



8046/4383 \*  
TOPIARY/ANTIQUE LACE



8046/4585  
TOPIARY/GREYSTONE



8047/4383  
GARDEN DAMASK/ANTIQUE LACE



8047/4585  
GARDEN DAMASK/GREYSTONE

# NIRVANA COLLECTION



8443/4383  
WELLINGTON/ANTIQUE LACE



8443/4585  
WELLINGTON/GREYSTONE



8580/4383  
THAMES/ANTIQUE LACE



# NOMAD COLLECTION

100% Polyester with Poly Frisee Accents

## STOCKED SIZES

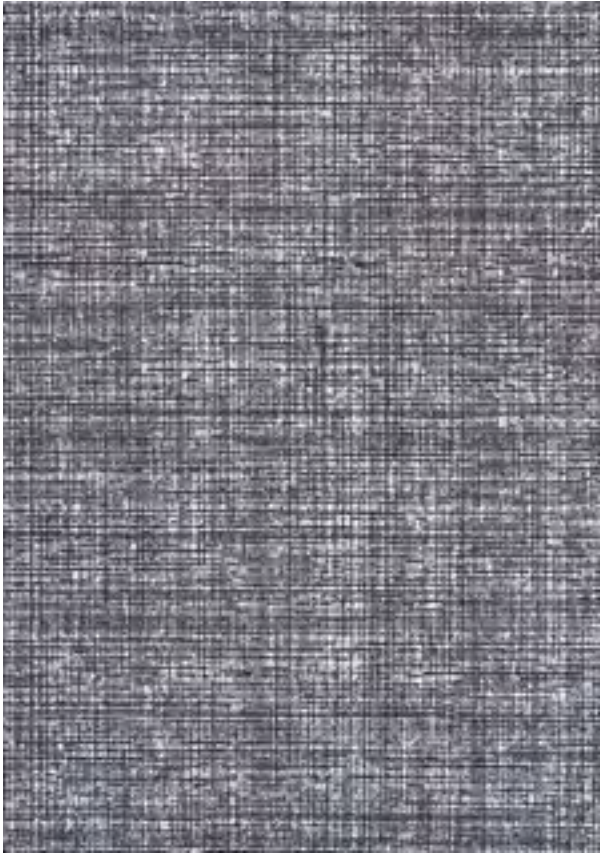
2' x 3'7" | 3'11" x 5'3" | 5'3" x 7'6" | 6'6" x 9'6" | 7'10" x 11'2"  
9'2" x 12'5" | 2'7" x 7'10" Runner

\* Design available in a 18" x 18" sample.

ALL SIZES ARE APPROXIMATE

Face-to-Face Wilton Woven  
Simple Transitional and  
Soft Contemporary Designs  
Easy Fit for Any Décor  
Pile Height: .433"  
Power-Loomed in Belgium

NOMAD COLLECTION



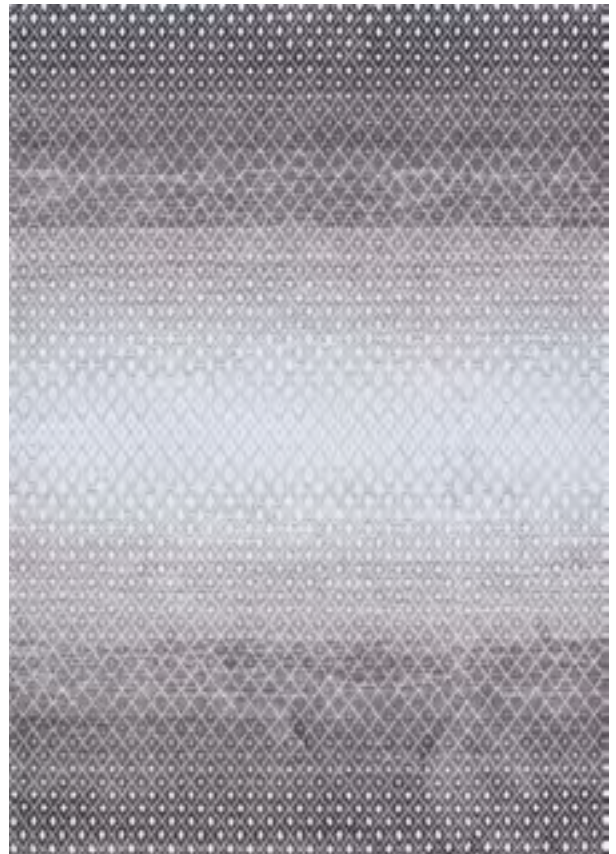
2611/6282  
KANJAR/TERRA FIRMA



2662/4262 \*  
BORIA/EARTH



2662/6242  
BORIA/STONE



2672/6272 \*  
AHERI/EARTH





# OLD WORLD CLASSICS COLLECTION

*Semi-Worsted New Zealand Wool*

## STOCKED SIZES

2'2" x 4'9" | 4'6" x 6'6" | 5'3" x 7'6" | 6'6" x 9'10" | 7'10" x 11'2"  
9'10" x 13'9" | 2'2" x 8'11" Runner

\* *Design available in a 18" x 18" sample.*

ALL SIZES ARE APPROXIMATE

Face-to-Face Wilton Woven  
Locked-In-Weave and Crystal-Point Finish  
25-Year Limited Warranty  
Pile Height: .28"  
Power-Loomed in Belgium

OLD WORLD CLASSICS COLLECTION



1383/3890  
MAMLUKEN/BURGUNDY



1660/1300  
PAZYRK/ANTIQUE RED



4348/0400 \*  
JOSHAGAN/RUST-NAVY



4348/0500  
JOSHAGAN/NAVY-RUST

OLD WORLD CLASSICS COLLECTION



4372/5430  
ROYAL AFGHAN/ANTIQUE RED



4373/5430  
ROYAL BAKTIARI/ANTIQUE RED



4392/2300  
ANTIQUE KERMAN/BLACK



4553/4350  
ANTIQUE MASHAD/BURNISHED CLAY

OLD WORLD CLASSICS COLLECTION



4553/5430

ANTIQUE MASHAD/ANTIQUE RED





# PASHA COLLECTION

*Machine-Woven Base of 100% Polyester*

## STOCKED SIZES

5' x 8' | 8' x 10' | 9' x 12' | 2' x 8' Runner

*\* Design available in a 18" x 18" sample.*

*ALL SIZES ARE APPROXIMATE*

Digitally Printed Motifs  
with a Non-Skid Backing

Saddle-Stitched Edges

A Gorgeous Collection of Printed Rugs  
that Feature Old-World Designs in  
a Modern Interpretation

Pile Height: .275"

Made in China

PASHA COLLECTION



4693/0931 \*  
KERMAN/CABERNET



4717/0717  
LOLA/MULTI



5076/0076  
TRIBAL/IVORY



5077/0177  
SARI/SAPPHIRE

# PASHA COLLECTION



5081/0081  
ARCADIA/GARNET



5082/0082  
PERSEPOLIS/TWILIGHT



5084/6509  
NAHAVAND/CABERNET





# PRAIRIE COLLECTION

100% Polyester Machine-Woven Base with a Non-Skid Backing

## STOCKED SIZES

2' x 3'7" | 3'9" x 5'5" | 5'3" x 7'6" | 7'6" x 10' | 2'3" x 7'10" Runner

## SPECIAL SHAPES

6'6" Round

*\*(Available for 2929/9212 Barnwood/Grey-Brown)*

*\*\* Design available in a 18" x 18" sample.*

ALL SIZES ARE APPROXIMATE

Emulating Cowhides in Various Patterns

A Unique Collection of Digitally Printed Rugs  
Takes the Hide Trend to Another Level

Pile Height: .079"

Made in China

# PRAIRIE COLLECTION



2834/0424  
ALPINE/ICE CAPS



2883/0832 \*\*  
FALSTERBO/BYZANTINE

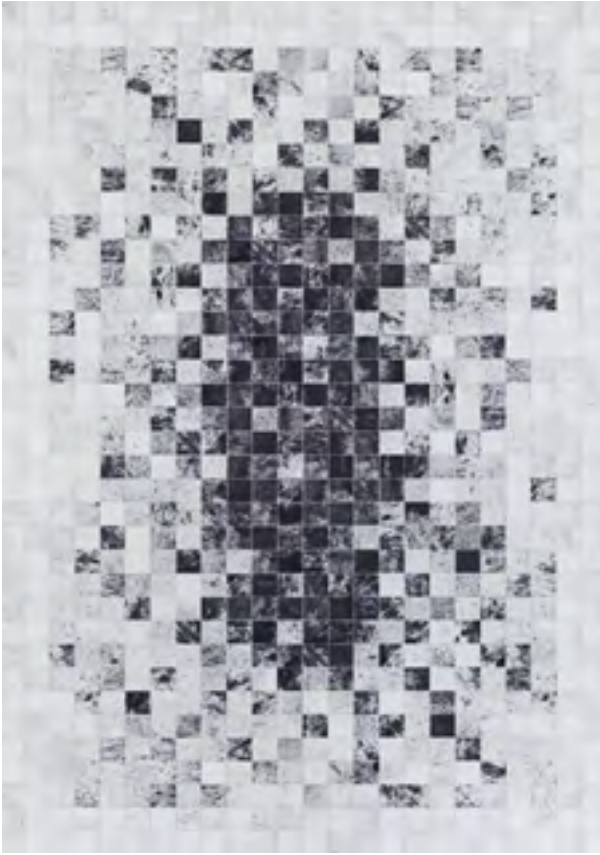


2929/9212 (No Foil) \* / \*\*  
BARNWOOD/GREY-BROWN



2930/3011 (No Foil)  
NORDIC/GREY-BROWN

# PRAIRIE COLLECTION



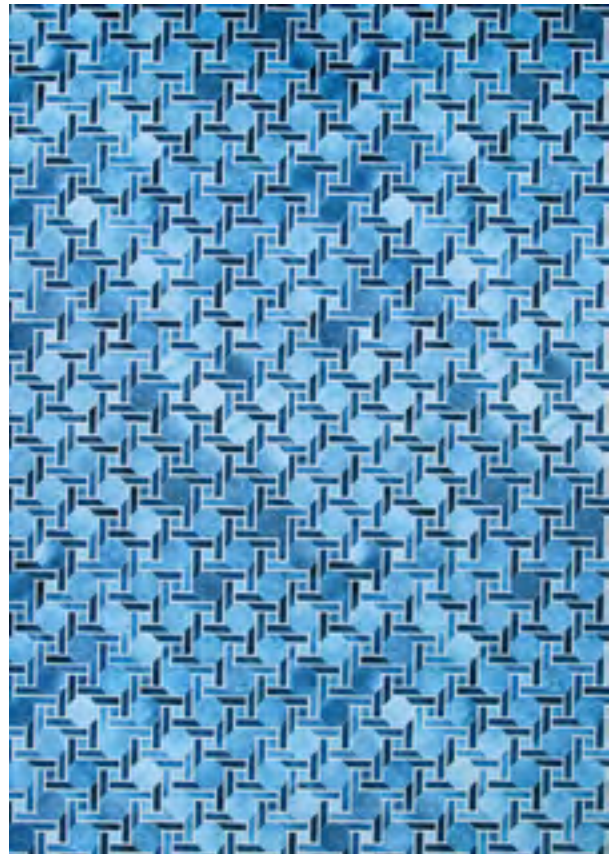
3009/0097  
HYGEE BLOCKS/COAL-ICE CAPS



3092/0928  
LAPLAND/HICKORY-NEUTRALS



3093/0003  
WINDSWEPT/BARK-GREY



3095/9292  
SOLSTICE/MARINE BLUE



# PRAIRIE HIDES COLLECTION

*100% Polyester Machine-Woven Base with a Cotton Micro-Suede Backing*

## STOCKED SIZES

3'10" x 5'1" | 5'1" x 6'6" | 6'4" x 8'

*ALL SIZES ARE APPROXIMATE*

Emulating Shaped Cowhides

A Unique Collection of Digitally Printed Rugs  
Takes the Hide Trend to Another Level

Pile Height: .079"

Made in China

PRAIRIE HIDES COLLECTION



1813/2993  
GEILO/IVORY-BUCK



1814/5074  
LARVIK/IVORY-BLACK



1816/2188  
OSLO/PEPPER



1817/5074  
ALESUND/IVORY-BLACK



# RAINBOW COLLECTION

*Machine-Woven Base of 100% Polyester*

## STOCKED SIZES

5' x 8' | 8' x 10' | 9' x 12' | 2' x 8' Runner

*ALL SIZES ARE APPROXIMATE*

Digitally Printed Motifs  
with a Non-Skid Backing

Saddle-Stitched Edges

A Playful Collection of Printed Area Rugs  
Inspired by the Colors of a Rainbow

Pile Height: .276"

Made in China

# RAINBOW COLLECTION



R623/1000  
RETRO/MULTI



R624/1000  
DANCING BEARS/MULTI



R629/0001  
FLAVORS/SPEARMINT-MULTI



# SAVOY COLLECTION

85% Space-Dyed Polyester / 15% Shrink Polyester

## STOCKED SIZES

5'3" x 7'2" | 6'6" x 9'6" | 7'10" x 10'5" | 10'5" x 15'8" | 2'7" x 7'2" Runner

\* Design available in a 18" x 18" sample.

ALL SIZES ARE APPROXIMATE

Face-to-Face Woven Wilton

Soft, Luxurious Finish in  
Excess of 550,000 Points of Yarn  
Per Square Meter

Traditional, Persian-Inspired Designs  
Recolored For Today's Households

Pile Height: .472"

Power-Loomed in Turkey



# SAVOY COLLECTION



7750/2020 \*  
LAMAR/SLATE BLUE



7751/1010 \*  
HADAD/IVORY



7752/3030  
KHESTI/DENIM



7753/3030  
ADABEH/DENIM

# SAVOY COLLECTION



7754/4040 \*  
NAIN/ASHBURN



# SERENITY COLLECTION

100% Heat-Set Courtron™ Polypropylene

## STOCKED SIZES

2' x 3'11" | 3'11" x 5'6" | 5'3" x 7'6" | 6'6" x 9'6" | 7'10" x 10'9"  
9'2" x 12'9" | 2'2" x 7'10" Runner

ALL SIZES ARE APPROXIMATE

Face-to-Face Wilton Woven

One Million Points of Yarn  
Per Square Meter

Unique Abstract Designs Highlighted  
in Modern Colors

Soft, Dense Luxurious Pile  
Pile Height: .393"

Power-Loomed in Belgium

# SERENITY COLLECTION



5149/0910  
WEATHERED/MUSHROOM-OPAL



5158/0920  
FIELD STONE/MUSHROOM-OPAL



5159/0505  
VIRGA/OPAL-GREY-MUSHROOM



5161/0291  
ABSTRACT MARBLE/OPAL-MUSHROOM



# SIENA COLLECTION

85% Viscose / 15% Shrink Acrylic

## STOCKED SIZES

5'3" x 7'2" | 6'6" x 9'6" | 7'10" x 10'5" | 10'5" x 15'8" | 2'7" x 7'2" Runner

\* Design available in a 18" x 18" sample.

ALL SIZES ARE APPROXIMATE

Hand-Washed for a Soft, Luxurious Finish  
Featuring Two Million Points of Yarn  
Per Square Meter

Modern-Transitional Designs Enhanced  
with Multi-Dimensional Hues in Engaging  
Natural and Vibrant Colors

Designed to Add Visual Drama to Bedrooms,  
Living Rooms and Family Rooms

Pile Height: .314"

Power-Loomed in Turkey

# SIENA COLLECTION



**3223/0506**  
SERPENTINE/STEEL-IVORY



**3225/0497 \***  
GRANDEUR/GOLD



**3226/0507**  
INVERNO/GREY-IVORY



**3227/0497 \***  
OMBRÉ/MULTI-IVORY

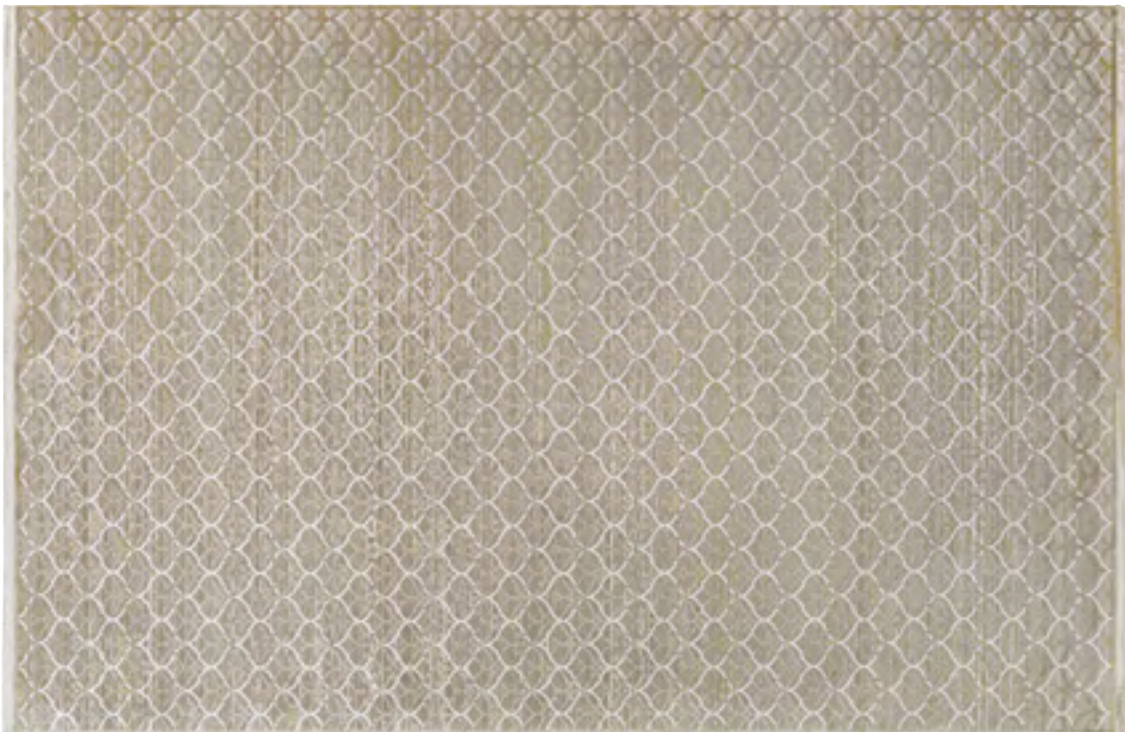
# SIENA COLLECTION



3227/0579  
OMBRÉ/BLUE-GOLD-IVORY



3228/0430  
TESSERA/BLUE-GOLD-STEEL



3231/0251  
HARLEQUIN/BURNISHED GOLD



# SULTAN TREASURES COLLECTION

100% Heat-Set Courtron™ Polypropylene

## STOCKED SIZES

2' x 3'7" | 3'11" x 5'3" | 5'3" x 7'6" | 6'6" x 9'6" | 7'10" x 11'2" | 9'2" x 12'5"  
2'7" x 7'10" Runner

\* Design available in a 18" x 18" sample.

ALL SIZES ARE APPROXIMATE

Face-to-Face Wilton Woven

One Million Points of Yarn  
Per Square Meter

Soft, Luxurious Finish

Traditional Persian Designs Highlighted  
in a Range of Rich, Modern Colors

Pile Height: .43"

Power-Loomed in Belgium



# SULTAN TREASURES COLLECTION



5740/9686 \*  
CLOVER MEDALLION/INDIGO



7142/3636 \*  
ALL OVER MASHAD/BLACK



7142/4646 \*  
ALL OVER MASHAD/SLATE BLUE



7142/9696 \*  
ALL OVER MASHAD/GREY

# SULTAN TREASURES COLLECTION



7145/4646 \*  
FLORAL YAZD/SLATE BLUE



7181/3666  
KASH/WARM SLATE



7192/8666  
SOFIA/BOSPHORUS



# VIBRATA COLLECTION

*A Unique Blend of 60% Space-Dyed Viscose and 40% Shrink Polyester*

## STOCKED SIZES

3'11" x 5'6" | 5'3" x 7'6" | 7'10" x 10'9" | 9'2" x 12'9" | 2'7" x 7'6" Runner

*ALL SIZES ARE APPROXIMATE*

One Million Points of Yarn Per Square Meter

Very Dense Luxurious Pile

Offering a Series of Contemporary  
and Modern-Traditional Designs

Enhanced in a Full Range of Watercolor Hues

Pile Height: .314"

Power-Loomed in Turkey

# VIBRATA COLLECTION



3121/0121  
MANDALA/MULTI PEWTER



3252/0252  
RYTHMIC/MULTI PASTELS



3377/0275  
CHATEAU/MULTI PACIFIC BLUE



3423/0243  
WATERCOLOR BLOCKS/MULTI PASTELS

# VIBRATA COLLECTION



3558/0258  
GRASSCLOTH/MULTI PASTELS



3559/0259  
REFLECTIONS/MULTI PASTELS



3668/0268  
DIVERGENCE/MULTI PASTELS





# ZAHARA COLLECTION

100% Heat-Set Courtron™ Polypropylene

## STOCKED SIZES

2' x 3'7" | 3'11" x 5'3" | 5'3" x 7'6" | 7'10" x 11'2" | 9'2" x 12'5" | 2'7" x 7'10" Runner

ALL SIZES ARE APPROXIMATE

Face-to-Face Wilton Woven

Pile Features a Soft,  
Luxurious Texture

Designs Include Vintage-  
Inspired Motifs and Patterns

Pile Height: .315"

Power-Loomed in Turkey

# ZAHARA COLLECTION



0428/0280  
PERSIAN VASE/RED-BLACK-OATMEAL



0428/0402  
PERSIAN VASE/OATMEAL-BLACK



0439/0330  
LOTUS MEDALLION/BLACK-RED-OATMEAL



0466/0280  
ALL OVER DIAMOND/RED-BLACK-OATMEAL



# ZAHARA COLLECTION



0466/0440

ALL OVER DIAMOND/BLACK-LIGHT BLUE-OATMEAL



0999/0299

COLUMN PANEL/LIGHT BLUE-BLACK



1142/0427

FLORAL EMBLEM/BLACK-OATMEAL



1143/0330

EMBELLISHED BLOSSOM/BLACK-RED-OATMEAL

# ZAHARA COLLECTION



1143/0431

EMBELLISHED BLOSSOM/LIGHT BLUE-OATMEAL



1443/0280

FARAHAN AMULET/RED-BLACK-OATMEAL



1443/0299

FARAHAN AMULET/LIGHT BLUE-BLACK



1443/0402

FARAHAN AMULET/OATMEAL-BLACK

ZAHARA COLLECTION



1863/0830  
ALL OVER SAROUK/SLATE-BLUE-CREAM



1867/0894  
FLORAL FERAHAN/CREME-BLACK



1867/0898  
FLORAL FERAHAN/NAVY-CREME



1869/0986  
SERAB/SLATE-BLUE-BLACK



TWO EXECUTIVE DRIVE, FORT LEE, NEW JERSEY 07024 • 800.223.6186 • [COURISTAN.COM](http://COURISTAN.COM)

WALL-TO-WALL CARPET • AREA RUGS • ROLL RUNNERS • CUSTOM RUGS



[couristan.com](http://couristan.com)



September 2024