



COURISTAN®

LIMITED EDITION COLLECTIONS & DESIGNS
OUTDOOR/INDOOR





TABLE OF CONTENTS

AFUERA COLLECTION	1-7
CAPE COLLECTION	8-15
CHARM COLLECTION	16-18
COTTAGES COLLECTION	19-22
COVINGTON COLLECTION	23-28
DOLCE COLLECTION	29-33
HARPER COLLECTION	34-36
MONACO COLLECTION	37-41
MONTE CARLO COLLECTION	42-43
OUTDOOR ESCAPE COLLECTION	44-48
RECIFE COLLECTION	49-56



AFUERA COLLECTION

100% Fiber-Enhanced Courtron™ Polypropylene

STOCKED SIZES

2' x 3'7" | 3'11" x 5'7" | 5'3" x 7'6" | 6'6" x 9'6" | 7'10" x 10'9" | 9'2" x 12'5"
2'2" x 7'10" Runner | 2'2" x 11'9" Runner

* Design available in a 18" x 18" sample.

ALL SIZES ARE APPROXIMATE

Featuring a Structured
Flatwoven Construction

Suitable for Outdoor/Indoor Use

UV Stabilized; Mold/Mildew/Water Resistant

Pet-Friendly

Pile Height: No Pile (Flat Weave)

Power-Loomed in Belgium

AFUERA COLLECTION



5038/6031
PATCHWORK/BEIGE-IVORY



5038/8151
PATCHWORK/PUMPKIN-IVORY



5038/9138
PATCHWORK/ONYX-IVORY



5229/6099 *
YACHT CLUB/TAN-IVORY

AFUERA COLLECTION



5229/8003 *
YACHT CLUB/SEA MIST-IVORY



5229/8061
YACHT CLUB/HONEY-IVORY



5229/8503
YACHT CLUB/MIDNIGHT BLUE-IVORY



5229/8505
YACHT CLUB/BUTTERSCOTCH-IVORY

AFUERA COLLECTION



5229/9081 *
YACHT CLUB/ONYX-IVORY



5262/3308
BEACHCOMBER/ANTHRACITE-SAND



5262/5003
BEACHCOMBER/MARINE-SHELL



5262/6009
BEACHCOMBER/MINK-SHELL

AFUERA COLLECTION



5262/9008
BEACHCOMBER/ONYX-SHELL



5274/5003
REGATTA/MARINE-SHELL



5379/9008
HERRINGBONE PATH/ONYX-SHELL

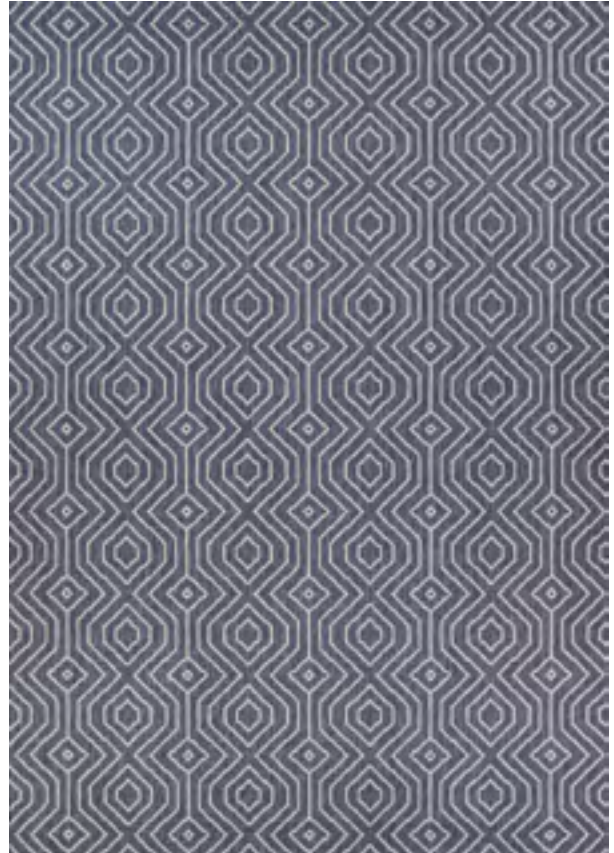


5569/0609
COUNTRY COTTAGE/BEIGE-IVORY

AFUERA COLLECTION



5569/0803
COUNTRY COTTAGE/SEA MIST-IVORY



7642/3308
ACTINIDE/ALLOY

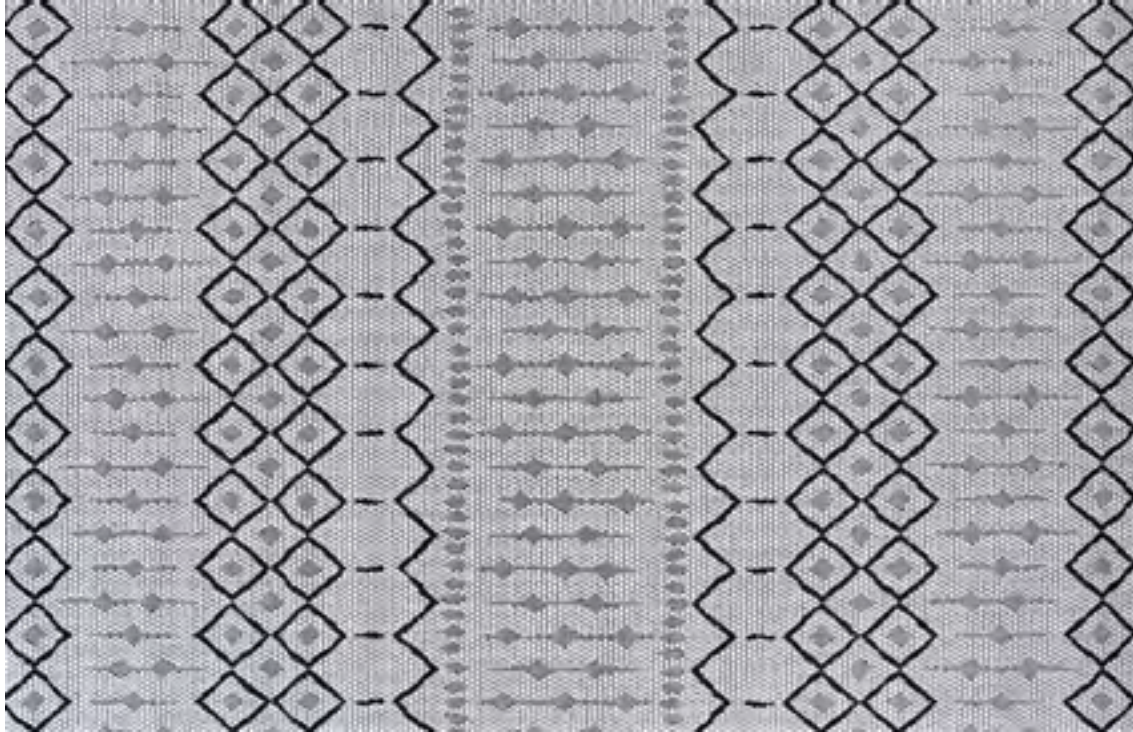


8237/9008
DIPOLE/HALOGEN



8239/9080
ANODE/CURRENT

AFUERA COLLECTION



8277/9001
HISTONE/HADRON



8408/9008
DIATOMIC/HALOGEN



CAPE COLLECTION

100% Fiber-Enhanced Courtron™ Polypropylene

STOCKED SIZES

2' x 3'7" | 3'11" x 5'6" | 5'3" x 7'6" | 6'6" x 9'6" | 7'10" x 10'9"
2'3" x 7'10" Runner | 2'3" x 11'9" Runner

* Design available in a 18" x 18" sample.

ALL SIZES ARE APPROXIMATE

High/Low Structured Weave
Provides Durable Performance
in Frequently Used Spaces
Inside and Outside the Home
UV Stabilized; Mold/Mildew/Water Resistant
Pet-Friendly
Pile Height: No Pile (Flat Weave)
Power-Loomed in Belgium

CAPE COLLECTION



1402/0023 *
MARION/LIGHT BROWN-IVORY



1403/0001 *
BROCKTON/HUNTER GREEN-BROWN

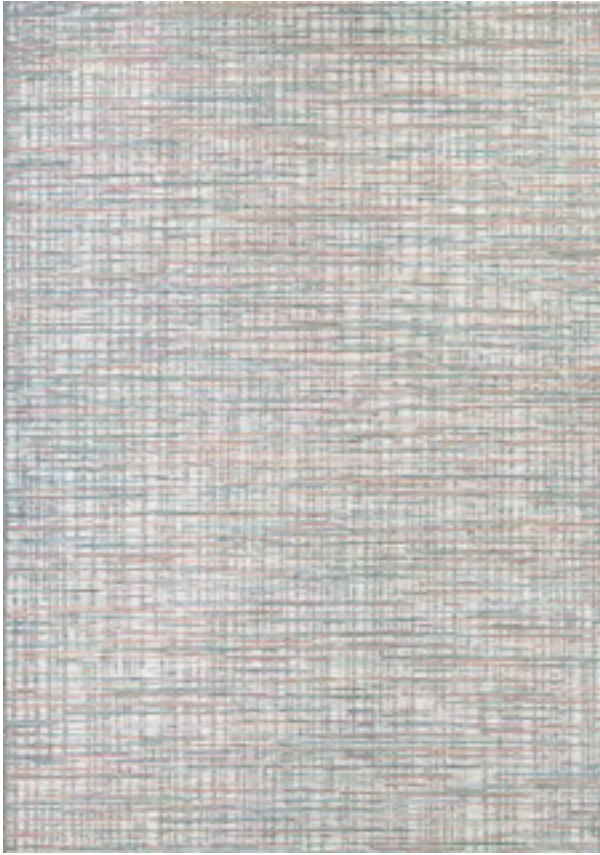


1403/0010 *
BROCKTON/PURPLE-MULTI



1403/0023 *
BROCKTON/LIGHT BROWN-IVORY

CAPE COLLECTION



1405/0011 *
FALMOUTH/IVORY-CORAL



1405/0014 *
FALMOUTH/IVORY-HUNTER



9801/3051
PENSACOLA/ALUMINUM



9823/3959
HYANNIS/BLACK-TAN

CAPE COLLECTION



9823/7939
HYANNIS/BLACK-GOLD



9823/9939
HYANNIS/GOLD-LIGHT BLUE



9831/3959 *
HARWICH/BLACK-TAN



9831/5989 *
HARWICH/LIGHT BLUE-SILVER

CAPE COLLECTION



9832/3959 *
BARNSTABLE/BLACK-TAN



9832/5989
BARNSTABLE/LIGHT BLUE-SILVER

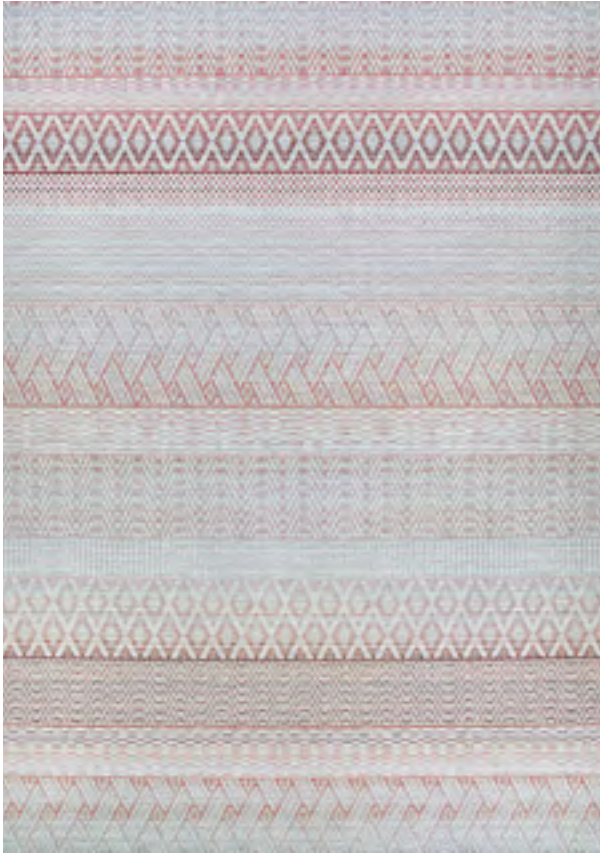


9832/7939 *
BARNSTABLE/BLACK-GOLD



9835/4018
GABLES/PALM

CAPE COLLECTION



9835/8019
GABLES/HIBISCUS



9838/3038
COBIJA/NATURALE



9838/3040
COBIJA/OBSCURA



9838/3042
COBIJA/GRIS

CAPE COLLECTION



9838/3043
COBIJA/AZUL



9860/9009 *
FAYSTON/SILVER-CHARCOAL



9862/6002 *
SHOREHAM/IVORY-CHARCOAL



9862/9003 *
SHOREHAM/IVORY-MULTI

CAPE COLLECTION



9863/3022
SHALLOWS/TAUPE-GREY



9864/5038
TORRENT/SKY BLUE-GREY



CHARM COLLECTION

100% Space-Dyed Heat-Set Courtron™ Polypropylene

STOCKED SIZES

2'2" x 4'3" | 3'3" x 5'6" | 5'3" x 7'6" | 6'6" x 9'6" | 7'10" x 10'9"
2'2" x 7'6" Runner

ALL SIZES ARE APPROXIMATE

Featuring Sophisticated Motifs
Structured Flatwoven Construction
Suitable for Outdoor/Indoor Use
UV Stabilized; Mold/Mildew/Water Resistant
Pet-Friendly
Pile Height: No Pile (Flat Weave)
Power-Loomed in Turkey

CHARM COLLECTION



2551/2055
THORNBURY/SAND-IVORY



2554/0224
BOTANICAL/SAND-TWIG



2555/2081
TIMBOON/SAND-IVORY



2556/2009
YUKON/ASH

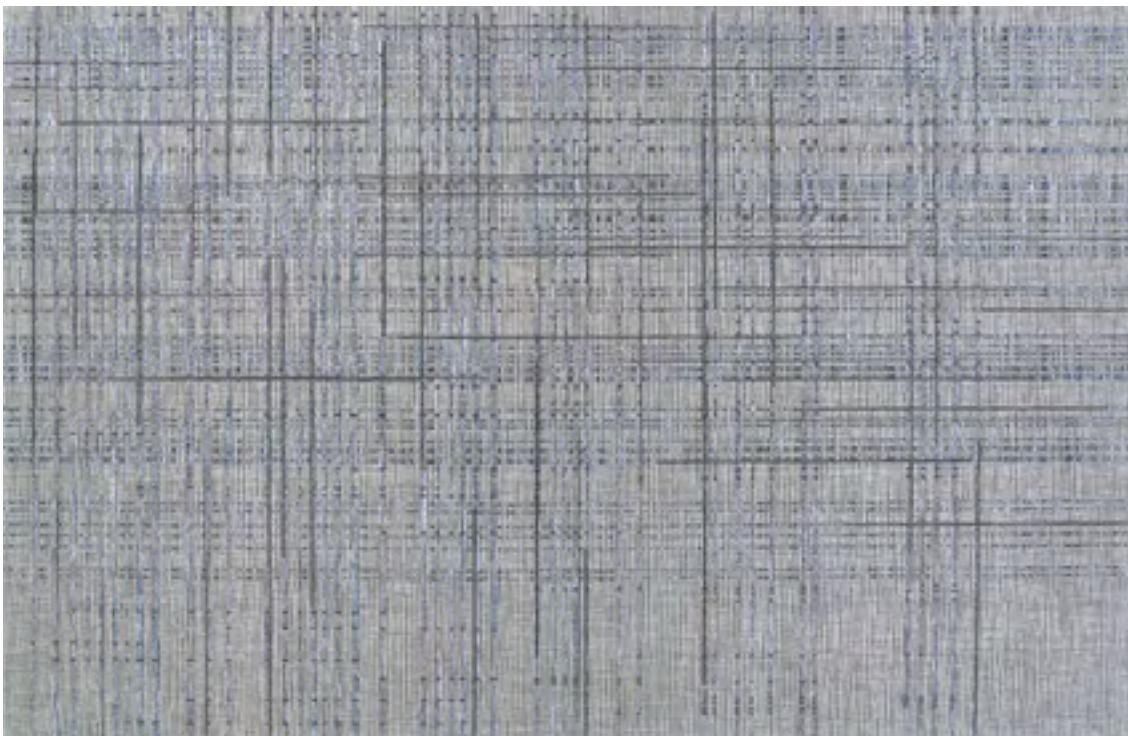
CHARM COLLECTION



2557/2091
ODESSA/TWIG



2558/2091
AURORA/TWIG



2666/0209
GRASSCLOTH/GREY-DENIM



COTTAGES COLLECTION

100% PET (High Content Recycled Materials Used)

STOCKED SIZES

2' x 3' | 3' x 5' | 5' x 8' | 8' x 10' | 2'3" x 8' Runner

ALL SIZES ARE APPROXIMATE

Hand-Woven Reversible Area Rugs

Relaxed Easy Living Patterns,
Fresh Natural Color Palette

Suitable for Outdoor/Indoor Use

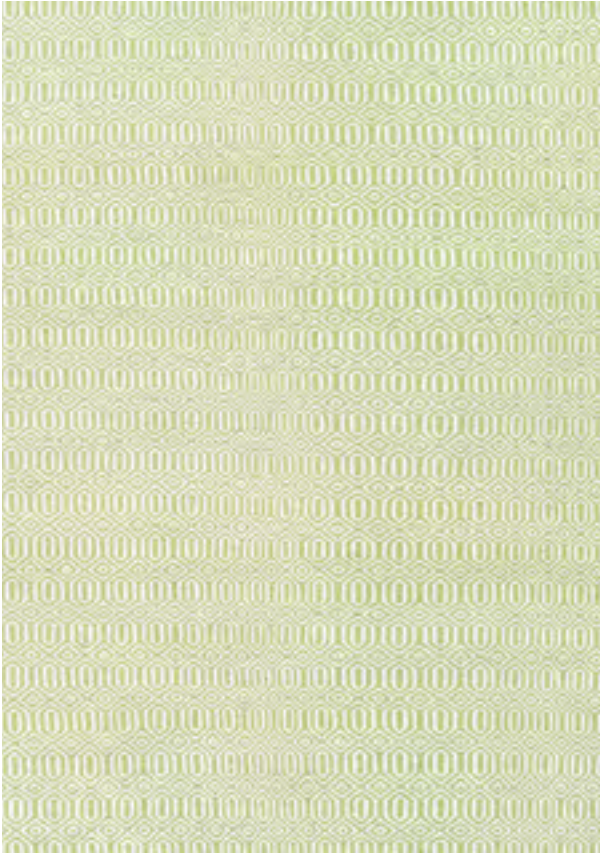
UV Stabilized; Mold/Mildew/Water Resistant

Pet-Friendly

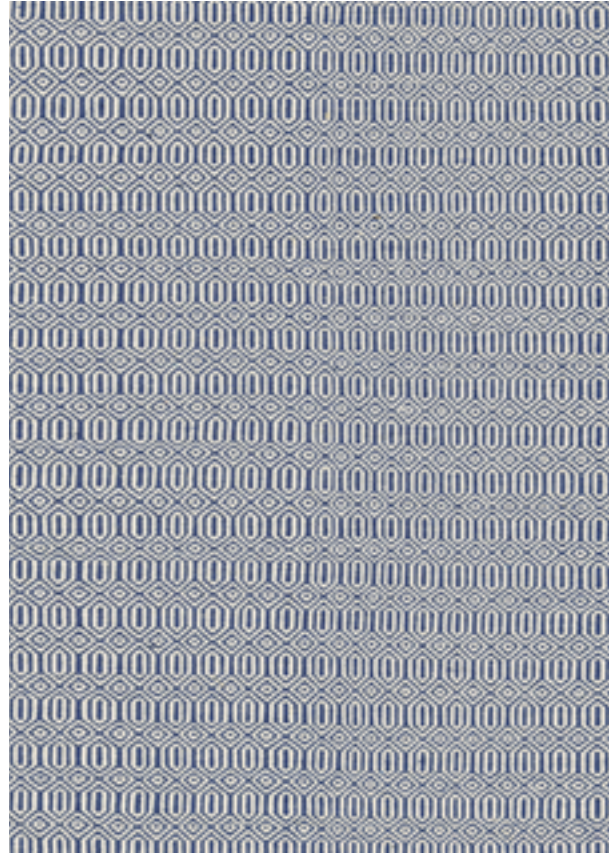
Pile Height: No Pile (Flat Weave)

Hand-Woven in India

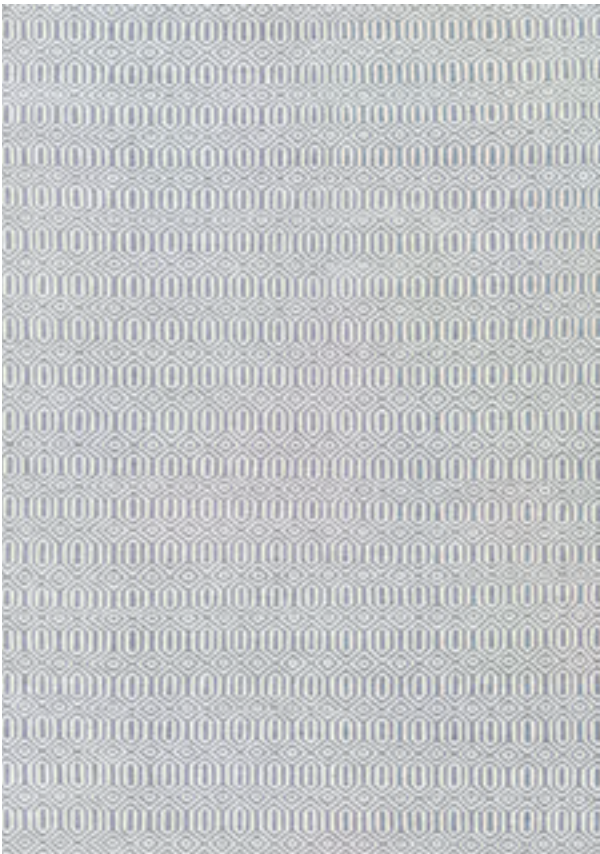
COTTAGES COLLECTION



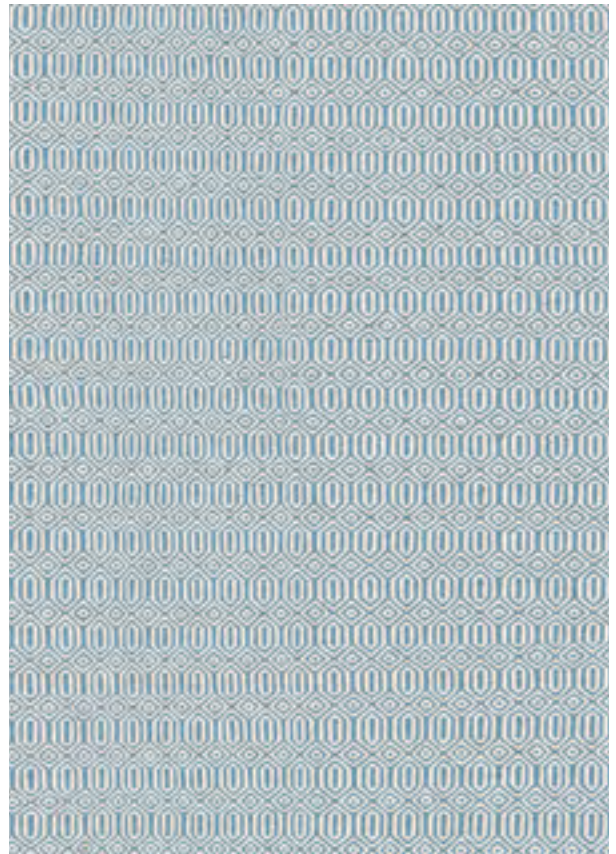
4960/0731
SOUTHPORT/GREEN



4960/0732
SOUTHPORT/NAVY



4960/0733
SOUTHPORT/BLUE

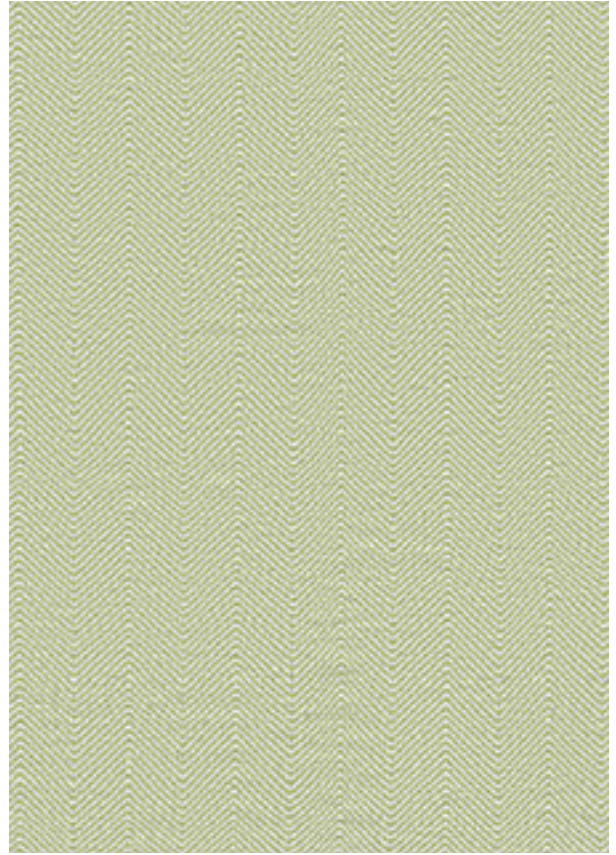


4960/0735
SOUTHPORT/DENIM

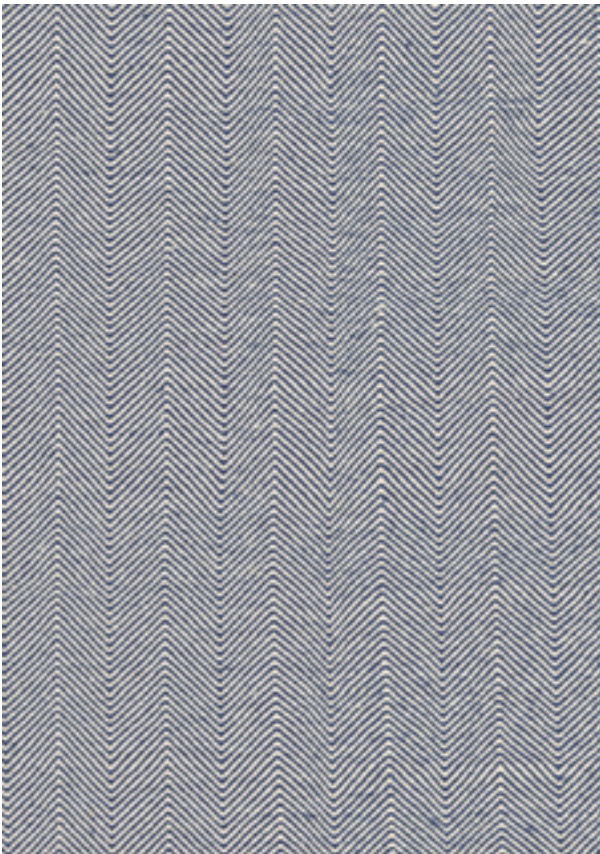
COTTAGES COLLECTION



4960/0736
SOUTHPORT/CARAMEL



4962/0731
BUNGALOW/GREEN



4962/0732
BUNGALOW/NAVY



4962/0733
BUNGALOW/BLUE

COTTAGES COLLECTION



4962/0735
BUNGALOW/DENIM



4962/0736
BUNGALOW/CARAMEL



5124/3298
ALKI/OCEAN SHADES



COVINGTON COLLECTION

100% Fiber-Enhanced Courtron™ Polypropylene

STOCKED SIZES

2' x 4' | *2' x 6' | 3'6" x 5'6" | 5'6" x 8' | 8' x 11' | 2'6" x 8'6" Runner

SPECIAL SHAPES

7'10" Round

** Design available in a 18" x 18" sample.

ALL SIZES ARE APPROXIMATE

Exquisite Hand-Hooked Construction

UV Stabilized; Mold/Mildew/Water Resistant

Provides Durable Performance

in Frequently Used Spaces

Inside and Outside the Home

Approximate Pile Height: .25"

Hand-Hooked in China

COVINGTON COLLECTION



2238/0801
ASTRAL/LAVENDAR-RASPBERRY



2992/0505 **
JUNGLE LEAVES/IVORY-FOREST GREEN



2993/2003
PALM LEAVES/BLUE



2993/2040
PALM LEAVES/GREEN

COVINGTON COLLECTION



3002/0820
SAN CLEMENTE/CREAM-BLUE



3002/0824
SAN CLEMENTE/CREAM-RED



3037/7821 **
PEGASUS/IVORY-NAVY-LIME



3126/0630
NAUTICAL STRIPES/NAVY-RED

COVINGTON COLLECTION



3534/1521 *
MONSTERA/CREAM-MULTI



3566/5589 **
FIJI/MULTI



3774/1074
GERANIUM/NAVY-MULTI



3778/1014 *
RIP TIDE/OCEAN-GREEN

COVINGTON COLLECTION



3895/0953 **
ARIATTA/NAVY



3990/0980
PALMS/NAVY



4972/4000
RAINFOREST/FOREST GREEN-BLACK



5148/8564
HERRINGBONE/NAVY-IVORY

COVINGTON COLLECTION



6166/0117
PINEAPPLES/SAND



6177/0220
FLAMINGOS/MULTI



DOLCE COLLECTION

100% Fiber-Enhanced Courtron™ Polypropylene with Durable Polyester

STOCKED SIZES

2'3" x 3'11" | 4' x 5'10" | 5'3" x 7'6" | 8'1" x 11'2" | *8'6" x 13'

2'3" x 7'10" Runner

** Design available in a 18" x 18" sample.

ALL SIZES ARE APPROXIMATE

Featuring a Structured
Tapestry Construction

Suitable for Outdoor/Indoor Use

UV Stabilized; Mold/Mildew/Water Resistant

Pet-Friendly

Pile Height: No Pile (Flat Weave)

Power-Loomed in Belgium

DOLCE COLLECTION



2378/0768
MAASAI/NOIR



4037/1035
CABANA STRIPE/ALLOY



4038/1222
ARALIA/NATURALS-COOL ONYX



4055/0632 */**
NOVELLA/ROSEBUD

DOLCE COLLECTION



4077/6025 **
BRINDISI/GREY



5465/0546
BOTSWANA/JUNIPER

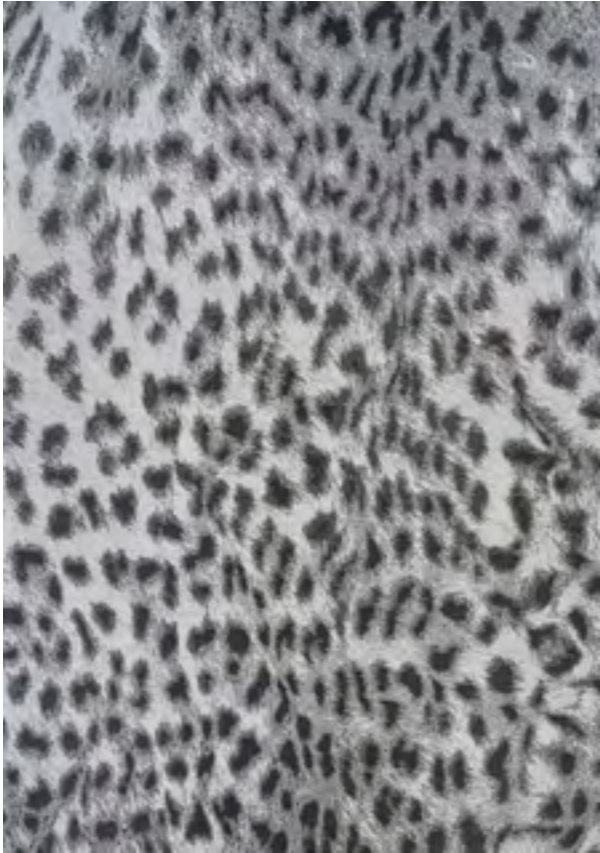


5465/0565
BOTSWANA/UMBER



5584/0270
KALAMIARIS PALM/SILVER

DOLCE COLLECTION



5756/2002
LYNX/IVORY-CHARCOAL



5757/0700
HYENA/DENIM-SILVER



7259/0110
SAND DUNE/BEIGE-MULTI



7502/0002
TOUCANS/IVORY

DOLCE COLLECTION



7503/0575
MAJORELLE/SILVER-BLACK



HARPER COLLECTION

100% Fiber-Enhanced Courtron™ Polypropylene

STOCKED SIZES

2' x 3'7" | 3'9" x 5'5" | 5'3" x 7'6" | 5'10" x 9'2" | 7'6" x 10'9" | 8'6" x 13'
2'3" x 7'10" Runner | 2'3" x 11'9" Runner

ALL SIZES ARE APPROXIMATE

Featuring a Structured
Flatwoven Construction

Suitable for Outdoor/Indoor Use

UV Stabilized; Mold/Mildew/Water Resistant

Pet-Friendly

Pile Height: No Pile (Flat Weave)

Power-Loomed in Belgium

HARPER COLLECTION



2752/3124
NAMBLA/GABON



2752/3138
NAMBLA/NILE



2780/3124
MALI/GABON



2780/3125
MALI/SUDAN

HARPER COLLECTION



2780/3127
MALI/TANZANIA



2782/3125
MADAGASCAR/SUDAN



2782/3127
MADAGASCAR/TANZANIA



MONACO COLLECTION

100% Fiber-Enhanced Courtron™ Polypropylene

STOCKED SIZES

2' x 3'7" | 3'9" x 5'5" | 5'3" x 7'6" | 5'10" x 9'2" | 7'6" x 10'9" | 8'6" x 13'
2'3" x 7'10" Runner | 2'3" x 11'9" Runner

** Design available in a 18" x 18" sample.*

ALL SIZES ARE APPROXIMATE

Featuring a Structured
Flatwoven Construction

Suitable for Outdoor/Indoor Use

UV Stabilized; Mold/Mildew/Water Resistant

Pet-Friendly

Pile Height: No Pile (Flat Weave)

Power-Loomed in Belgium

MONACO COLLECTION



2440/2206
PAVERS/BLACK



2440/3184
PAVERS/MOCHA



2467/2003
STARBOARD/GREY-SAND



2471/1016 *
LARVOTTO/SAND-MULTI

MONACO COLLECTION



2471/2044 *
LARVOTTO/GREY-MULTI



2471/2200 *
LARVOTTO/BLUE-MULTI



2481/3212
PALERMO/CHAMPAGNE-MOSS

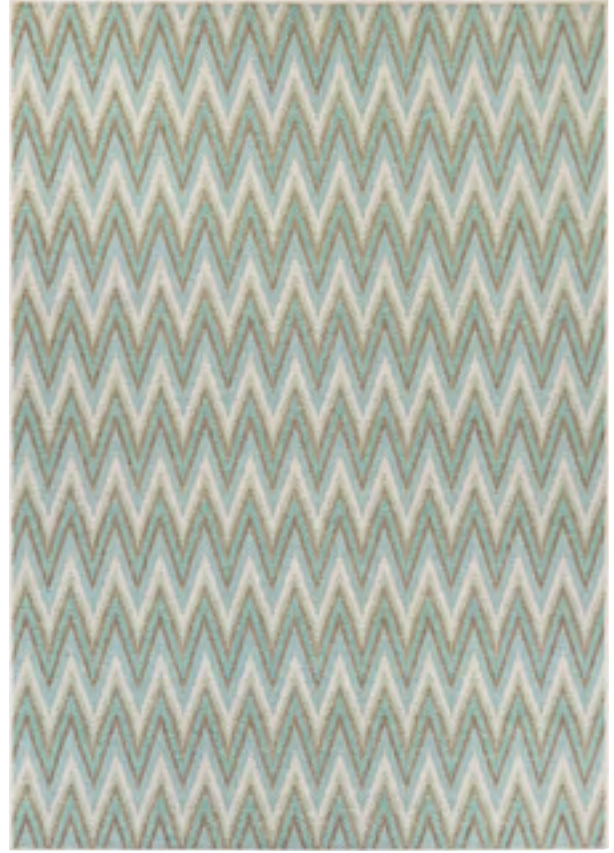


6041/3122 *
MARBELLA/SAND-IVORY

MONACO COLLECTION



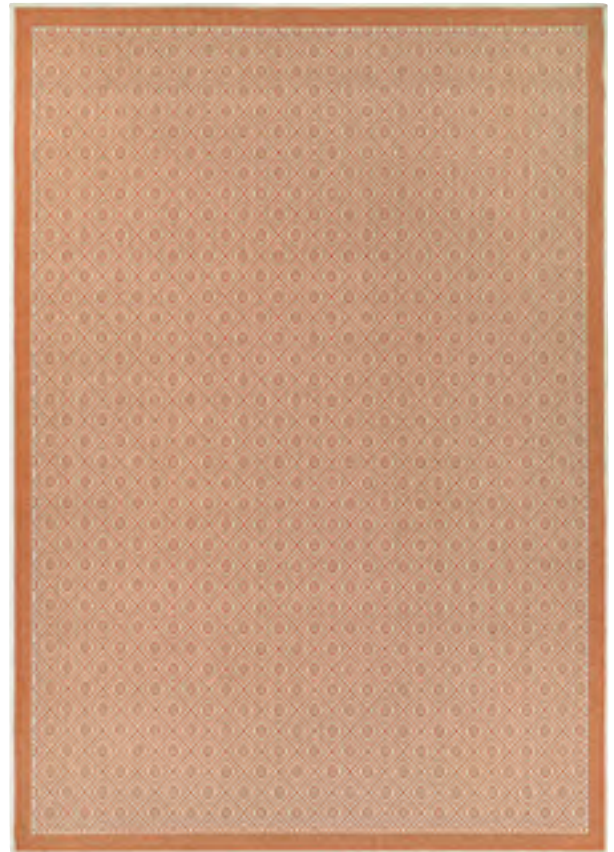
6041/3151 *
MARBELLA/CORAL-IVORY-PEWTER



6046/3107
AVILA/BLUE MIST-IVORY

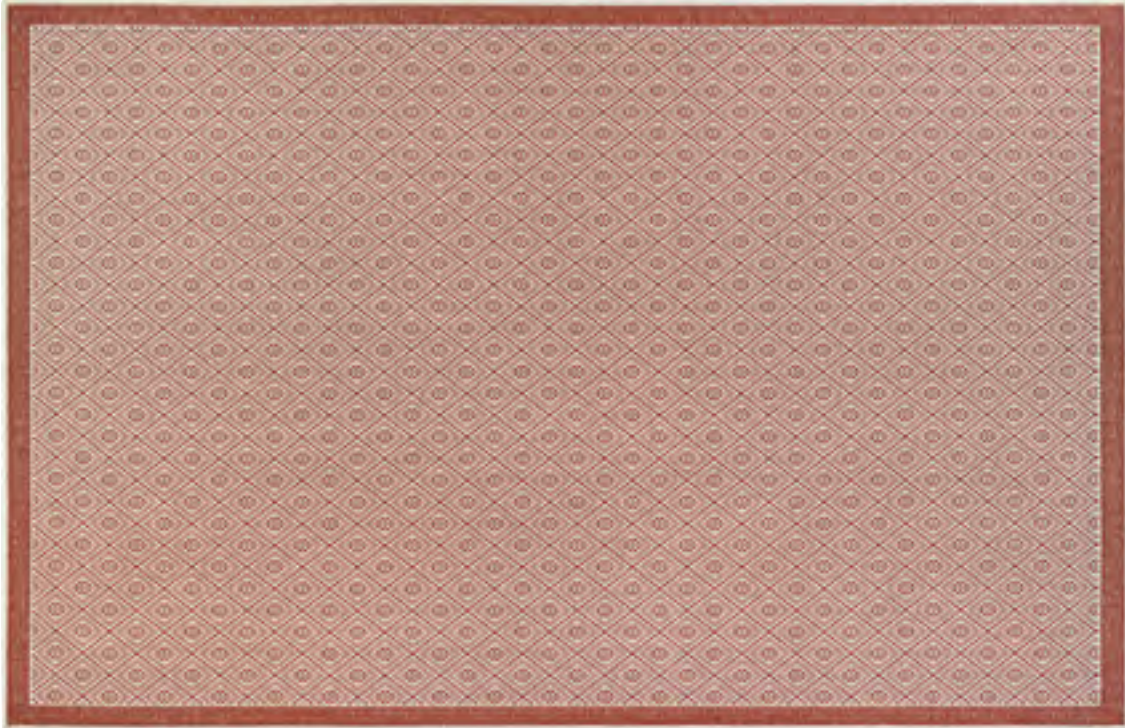


7847/1023 *
ALASSIO/SAND-SEA MIST-LEMON

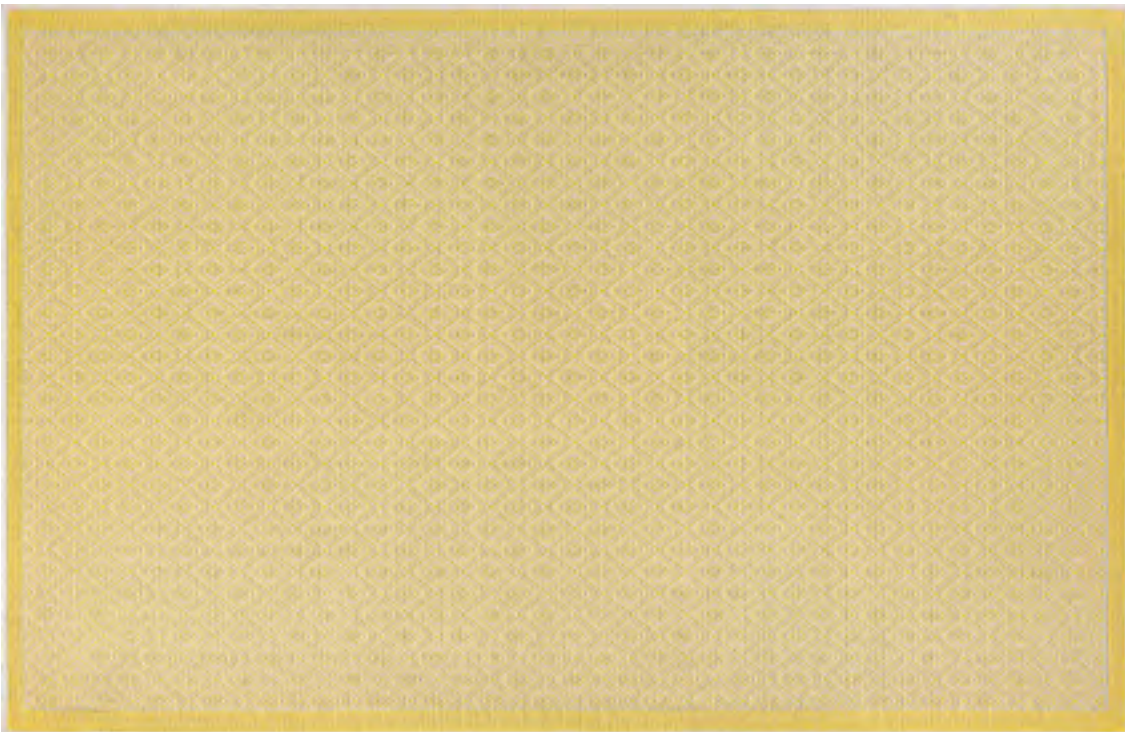


7949/1472 *
SEA PIER/SAND-SALMON

MONACO COLLECTION



7949/1561 *
SEA PIER/SAND-MAROON



7949/1683 *
SEA PIER/SAND-LEMON



MONTE CARLO COLLECTION

100% Fiber-Enhanced Courtron™ Polypropylene

STOCKED SIZES

2' x 3'7" | 3'9" x 5'5" | 5'3" x 7'6" | 5'10" x 9'2" | 7'6" x 10'9" | 8'6" x 13'
2'3" x 7'10" Runner | 2'3" x 11'9" Runner

ALL SIZES ARE APPROXIMATE

Featuring a Structured
Flatwoven Construction

Suitable for Outdoor/Indoor Use

UV Stabilized; Mold/Mildew/Water Resistant

Pet-Friendly

Pile Height: No Pile (Flat Weave)

Power-Loomed in Belgium

MONTE CARLO COLLECTION



2331/3124
SUMMER VINES/PEWTER-IVORY



2331/3125
SUMMER VINES/MUSHROOM-IVORY



2331/3216
SUMMER VINES/OCEAN-IVORY



2331/3244
SUMMER VINES/DARK GREY-IVORY



OUTDOOR ESCAPE COLLECTION

100% Fiber-Enhanced Courtron™ Polypropylene

STOCKED SIZES

2' x 4' | 3'6" x 5'6" | 5'6" x 8' | 8' x 11' | 2'6" x 8'6" Runner

SPECIAL SHAPES

7'10" Round

ALL SIZES ARE APPROXIMATE

Exquisite Hand-Hooked Construction
Outdoor-Themed Novelty Motifs

UV Stabilized; Mold/Mildew/Water Resistant

Provides Durable Performance
in Frequently Used Spaces
Inside and Outside the Home

Approximate Pile Height: .25"

Hand-Hooked in China

OUTDOOR ESCAPE COLLECTION



2123/8011
PACIFIC HEIGHTS/OCEAN



2124/7025
COCOA BEACH/SAND



2134/1140
SEA REEF/TERRA-COTTA



4290/8160
ANCHORS AWAY/NAVY

OUTDOOR ESCAPE COLLECTION



4291/4116
BEACH HUT/NAVY-MULTI



4292/4117
BLUE CLAWS/NAVY



4293/4178
UNDER THE SEA/OCEAN



4294/4191
MARINER/NAVY-IVORY

OUTDOOR ESCAPE COLLECTION



4295/4179
ANCHORBEND/OCEAN BLUE



6852/6486
NAUTICAL FLAGS/SAND



6856/8252
YACHTING/NAVY



7334/0110
CARDITA SHELLS/TERRA-COTTA-IVORY

OUTDOOR ESCAPE COLLECTION



7334/0220

CARDITA SHELLS/TURQUOISE-IVORY



7334/0313

CARDITA SHELLS/NAVY-IVORY



RECIFE COLLECTION

100% Fiber-Enhanced Courtron™ Polypropylene

STOCKED SIZES

2' x 3'7" | 3'9" x 5'5" | 5'3" x 7'6" | 5'10" x 9'2" | 7'6" x 10'9" | 8'6" x 13'
2'3" x 7'10" Runner | 2'3" x 11'9" Runner

SPECIAL SHAPES

7'6" Rd./Sq. | 8'6" Rd./Sq.

* Design available in a 18" x 18" sample.

ALL SIZES ARE APPROXIMATE

Featuring a Structured
Flatwoven Construction

Suitable for Outdoor/Indoor Use

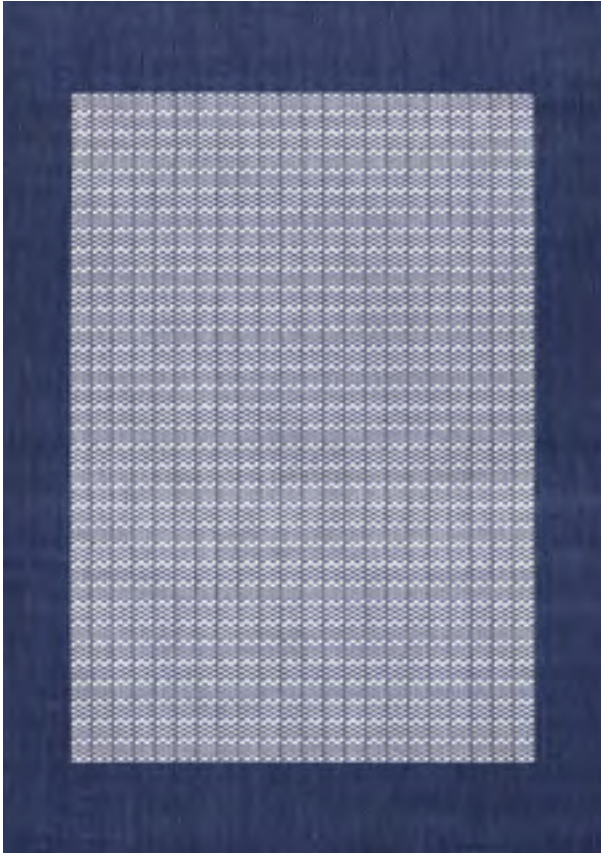
UV Stabilized; Mold/Mildew/Water Resistant

Pet-Friendly

Pile Height: No Pile (Flat Weave)

Power-Loomed in Belgium

RECIFE COLLECTION



1005/6500
CHECKERED FIELD/IVORY-INDIGO



1016/3000 *
GARDEN LATTICE/COCOA-NATURAL



1016/5016 *
GARDEN LATTICE/NATURAL-GREEN

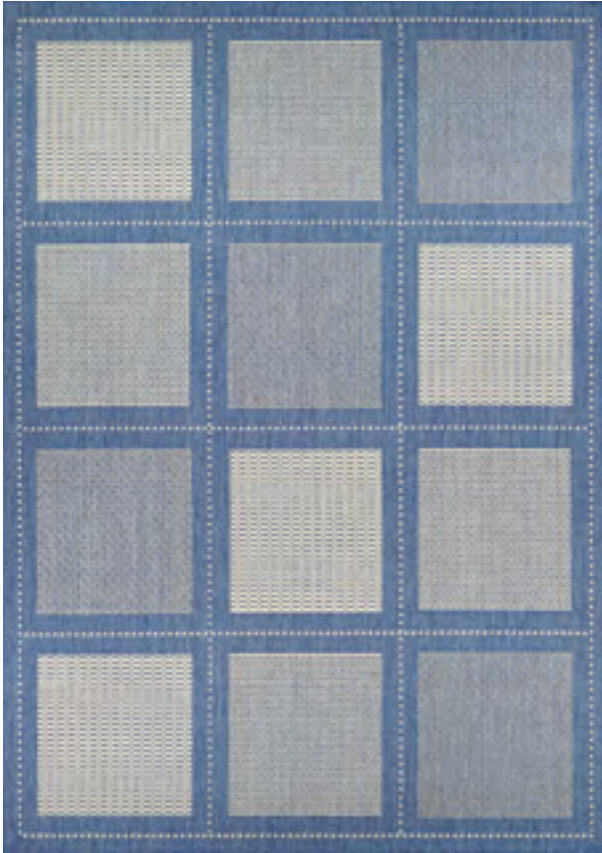


1016/5500
GARDEN LATTICE/NATURAL-BLUE

RECIFE COLLECTION



1017/2500
TAMWORTH/COCOA-BLACK



1043/1212
SUMMIT/CHAMPAGNE-BLUE



1043/2312
SUMMIT/CHAMPAGNE-TAUPE

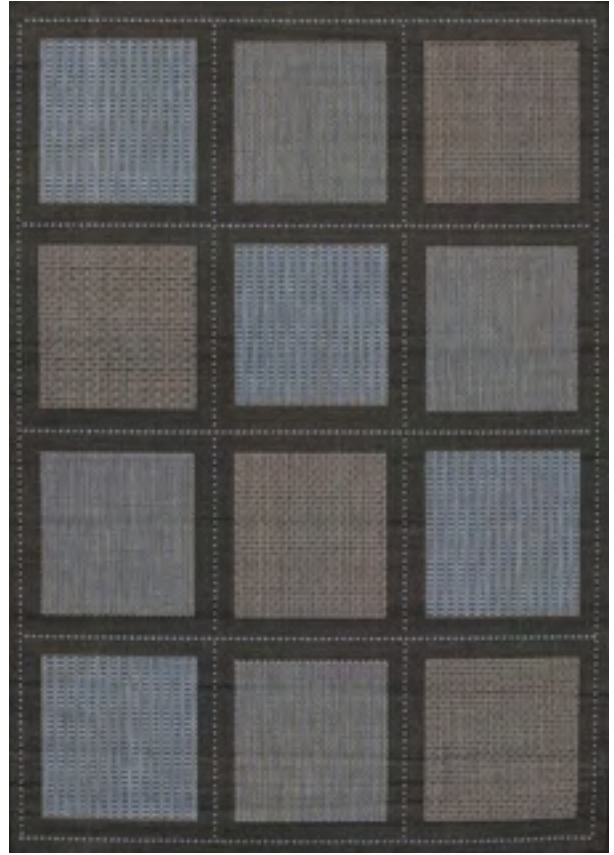


1043/3000 *
SUMMIT/NATURAL-COCOA

RECIFE COLLECTION



1043/3012 *
SUMMIT/GREY-WHITE



1043/5000
SUMMIT/BLUE-BLACK



1078/1212 *
ANTIQUE MEDALLION/CHAMPAGNE-BLUE



1078/1812
ANTIQUE MEDALLION/GREEN-NATURAL

RECIFE COLLECTION



1078/3012 *
ANTIQUÉ MEDALLION/GREY-WHITE



1078/4412
ANTIQUÉ MEDALLION/SAGE LEAF-IVORY

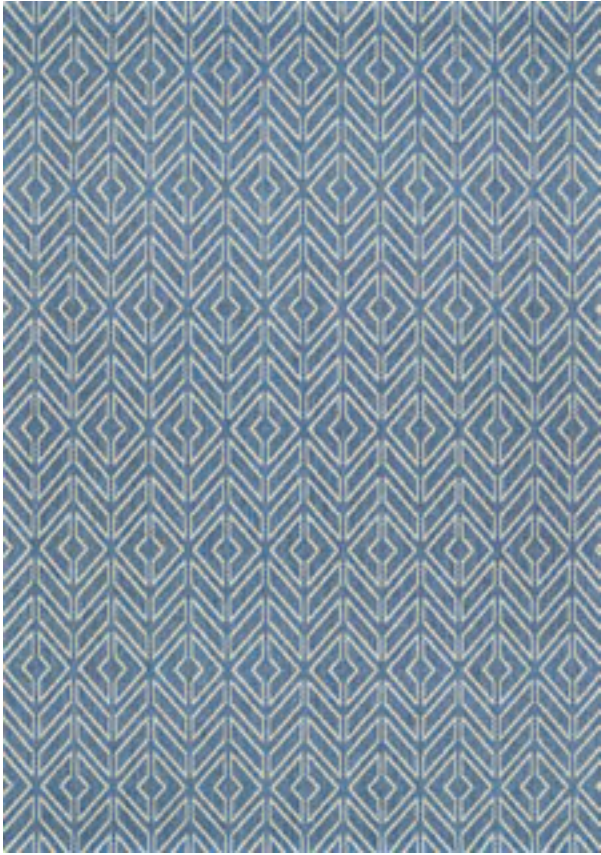


1177/1112
TROPICS/NATURAL-TERRA-COTTA



1177/2500
TROPICS/COCOA-BLACK

RECIFE COLLECTION



1318/1222
CABANA TILE/REGATTA-IVORY



1318/3312
CABANA TILE/ALLOY-IVORY



1318/4412
CABANA TILE/SAGE LEAF-IVORY



1522/0121
ROSE LATTICE/COCOA-BLACK

RECIFE COLLECTION



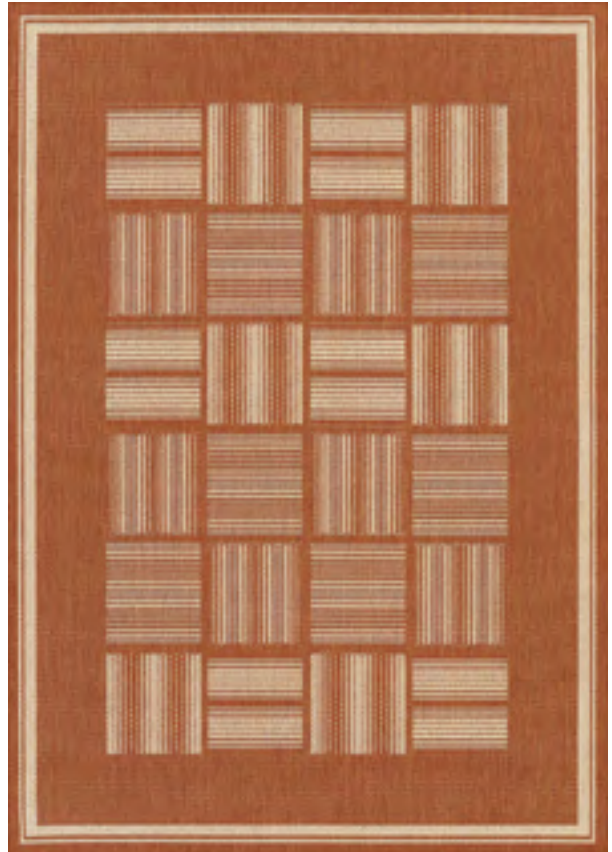
1522/0712
ROSE LATTICE/NATURAL-COCOA



1546/0122
PATHWAY/NATURAL-BLACK

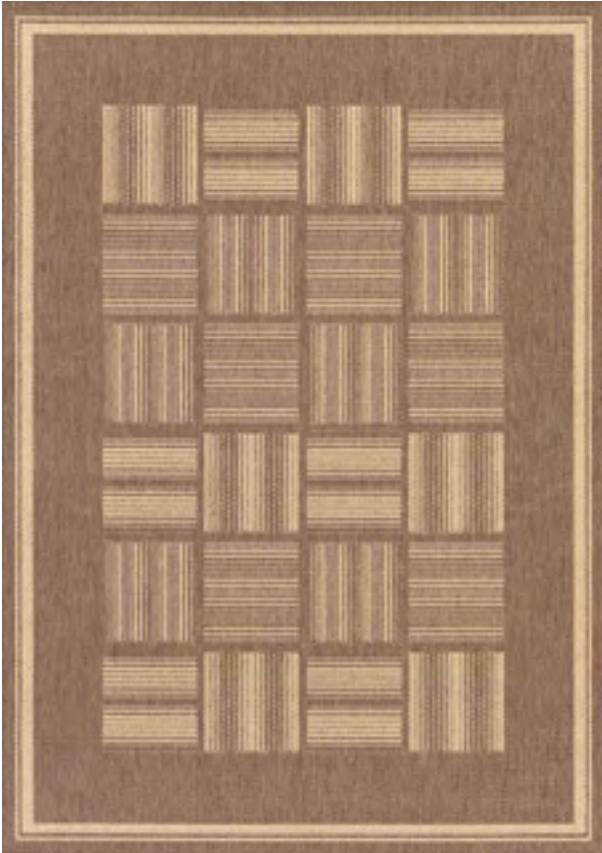


1583/1112 *
VERANDA/NATURAL-TERRA-COTTA



1680/1112
BISTRO/TERRA-COTTA-NATURAL

RECIFE COLLECTION



1680/1500
BISTRO/COCOA-NATURAL



1680/2000
BISTRO/BLACK-COCOA



5313/4412
GAZEBO STRIPE/SAGE LEAF-IVORY



TWO EXECUTIVE DRIVE, FORT LEE, NEW JERSEY 07024 • 800.223.6186 • COURISTAN.COM

WALL-TO-WALL CARPET • AREA RUGS • ROLL RUNNERS • CUSTOM RUGS



couristan.com



September 2024