



COURISTAN®

January–June  
2025

# Couri-er

## WATER MILL

**BRAND:** Creations™, **PILE:** 100% PET (High Content Recycled Materials Used)

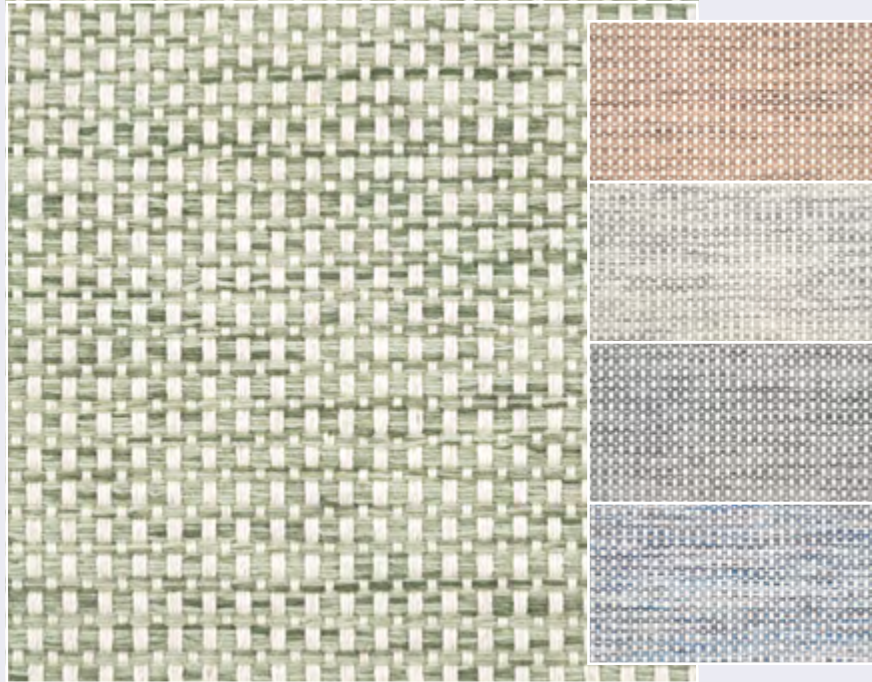
**WEAVE:** Hand-Loomed Flatweave, **WIDTH:** 15'

*Available in:* Indigo, Stormy Grey, Cocoa (shown), Oyster and Moss



# RESIDENTIAL BROADLOOM & CUSTOM AREA RUGS INTRODUCTIONS

## SUNSET PARK



**BRAND** | Premiere®  
**PILE** | 100% Pure Wool  
**WEAVE** | Hand-Loomed Loop Pile  
**WIDTH** | 15'

*Available in:*  
 Moss, Coral, Light Grey,  
 Dark Grey and Multi

### NOTE

## RESIDENTIAL BROADLOOM

*These products can be fabricated into a Custom Size Area Rug.*

Finishing options include the following bindings: Chenille, Cotton Fabric, Linen and Courtron™ Polypropylene (For Outdoor/Indoor Usage), 3/8" Synthetic Binding (For Outdoor/Indoor Usage), Wool and Synthetic Serging, and 2" Length Fringe are also available.

Applied Backing Options Include: Outdoor Living Cushion, Non-Skid and Felt (Standard)

Contact your Couristan Territory Manager today in regard to our Custom Rug Online Calculator, Boards and Program.

## LUCERNE

**BRAND** | Premiere®  
**PILE** | 65% Wool / 35% Tencel®  
**WEAVE** | Woven Wilton Loop Pile  
**WIDTH** | 13'2" (4 Meters)

*Available in:* Soft Blue (shown), Light Rose, Light Green, Antique Beige and White



## SPANISH WELLS



**BRAND** | Premiere®  
**PILE** | 40% Polyester / 30% Wool / 30% Jute  
**WEAVE** | Hand-Loomed Loop Pile  
**WIDTH** | 15'

*Available in:* Navy, Taupe and Aqua

## INNISBROOK

**BRAND** | Premiere®  
**PILE** | 100% Pure New Zealand Wool  
**WEAVE** | Hand-Loomed Loop Pile  
**WIDTH** | 15'

*Available in:* Grey, Platinum (shown), Green, Beige and Blue



# AREA RUG INTRODUCTIONS



## COSMOROS COLLECTION

HAND-WOVEN OF 100% JUTE WITH FRINGED EDGES  
 ETHNIC-INSPIRED ABSTRACT DESIGNS BOLDLY HIGHLIGHT THE NATURAL FIBERS OF THIS COLLECTION, GIVING THEM AN ORGANIC FEEL  
 A NATURAL COLOR PALETTE ALLOWS FOR EASE OF DESIGN OPTIONS, WORKING WELL IN ECLECTIC, MODERN AND TRANSITIONAL ENVIRONMENTS  
 PILE HEIGHT: ZERO PILE | HAND-WOVEN IN INDIA

Available in 5 Area Rugs  
**SIZES** | 6' x 9', 8' x 10'



## UTOPIA COLLECTION

HAND-KNOTTED OF 100% WOOL WITH FRINGED EDGES

INSPIRED BY THE CENTURIES-OLD DESIGNS THAT CAME BEFORE THEM, UTOPIA IS AN ODE TO YESTERDAY WITH A NOD TO TODAY

TRADITIONAL DESIGNS ARE GIVEN A MODERN TWIST IN COLORS THAT ECHO OF-THE-MOMENT AESTHETICS IN RICH PINKS, TURQUOISE, GOLD AND GREEN

MOTIFS ARE ROOTED IN HISTORY, BUT ARE OVERSIZED AND WITHOUT REPEAT, LENDING A PUNK EDGE TO EACH

PILE HEIGHT: .078"

HAND-KNOTTED IN INDIA

Available in 3 Area Rugs

**SIZES** | 5'6" x 8'6"  
 7'6" x 9'6"  
 8'6" x 11'6"  
 9'6" x 13'6"



UT01/1003  
 Juno/Silver-Multi



UT02/3001  
 Vesta/Navy



UT02/4002  
 Vesta/Olive

## ELYSIAN COLLECTION

HAND-KNOTTED OF 100% WOOL WITH FRINGED EDGES  
 A FRESH APPROACH TO TRADITIONAL MOTIFS, ELYSIAN IS A UNIQUE COLLECTION OF HANDMADE RUGS WOVEN IN A BEAUTIFUL HIGH/LOW CONSTRUCTION  
 UTILIZING AN OUSHAK WEAVE, EACH PIECE FEATURES RAISED ELEMENTS TO ENHANCE THE DESIGN GIVING THEM TEXTURE AND INTEREST  
 DESIGNS ARE WITHOUT REPEAT ALLOWING FOR A BORDER STATEMENT IN ANY ROOM IN WHICH THEY ARE PLACED  
 WORKS EFFORTLESSLY IN TRADITIONAL, TRANSITIONAL, CONTEMPORARY AND ECLECTIC ENVIRONMENTS

PILE HEIGHT: .078" | HAND-KNOTTED IN INDIA

Available in 3 Area Rugs

**SIZES** | 5'6" x 8'6", 7'6" x 9'6", 8'6" x 11'6", 9'6" x 13'6"



## ASCOT

HAND-WOVEN OF 100% PET (HIGH CONTENT RECYCLED MATERIALS USED)  
 INFLUENCED BY MENSWEAR TEXTILES, ASCOT IS A SIMPLE GROUP OF HAND-WOVEN ANYWHERE/EVERYWHERE RUGS  
 TONAL OVERSIZED WINDOWPANE MOTIFS GIVE EACH PIECE TEXTURE; SPACE-DYED YARNS GROUNDS THEM  
 SELF-FRIDGE EDGES ENHANCE THE SIMPLICITY OF THESE PIECES THAT FEATURE COLORS THAT ECHO THE OUTDOORS  
 MOLD/MILDEW/WATER RESISTANT; UV STABILIZED  
 PILE HEIGHT: NO PILE (FLAT WEAVE) | CRAFTED IN INDIA

**SIZES** | 5' x 8', 8' x 10', 9' x 12'





# RESIDENTIAL BROADLOOM & CUSTOM AREA RUGS

## INTRODUCTIONS

### HERITAGE BAY



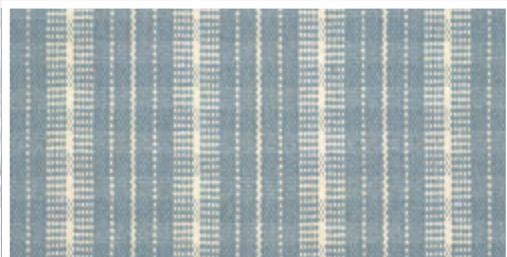
CBHY/0001 Taupe



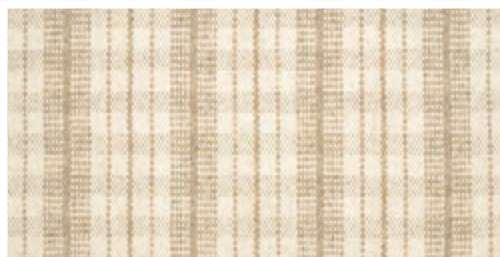
CBHY/0002 Grey



CBHY/0003 Brown



CBHY/0004 Light Blue



CBHY/0005 Beige

**BRAND:** Creations™  
**PILE:** 100% Pure Wool, **WEAVE:** Hand-Loomed Flatweave, **WIDTH:** 15'



### BABYLON

**BRAND:** Creations™, **PILE:** 65% Heat-Set Courtron™ Polypropylene / 35% Shrink Polyester  
**WEAVE:** Face-to-Face Woven Wilton High/Low Cut-Pile, **WIDTH:** 13'2" (4 Meters)



CBY7/0001  
Marble

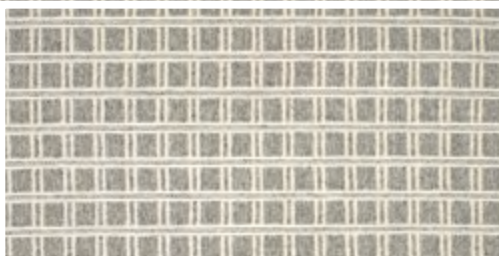


CBY7/0002  
Slate

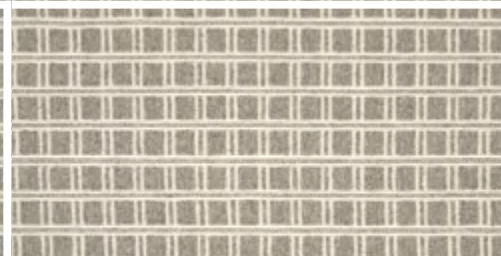


CBY7/0003  
Shale

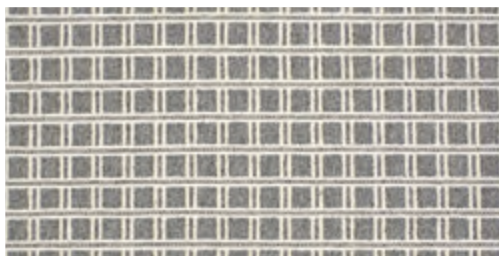
### LAKESIDE



CBLK/0001 Light Grey



CBLK/0002 Taupe



CBLK/0003 Dark Grey



CBLK/0005 Oatmeal



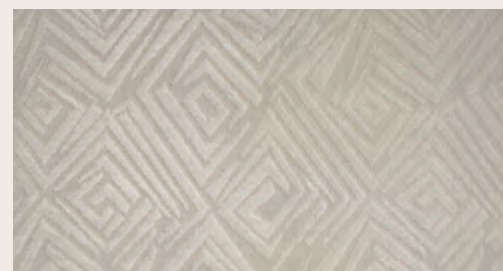
CBLK/0004 Beige

**BRAND:** Creations™  
**PILE:** 100% Pure Wool, **WEAVE:** Hand-Loomed Loop Pile, **WIDTH:** 15'

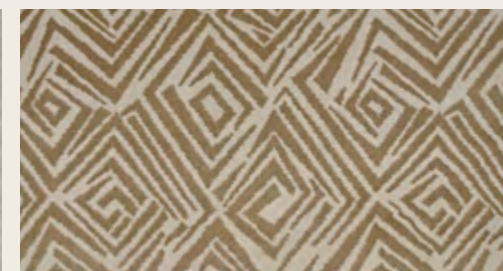


### TIMKEN

**BRAND:** Creations™, **PILE:** 55% Heat-Set Courtron™ Polypropylene / 45% Shrink Polyester  
**WEAVE:** Face-to-Face Woven Wilton High/Low Cut-Pile, **WIDTH:** 13'2" (4 Meters)



CBTK/0001  
Cream



CBTK/0002  
Beige



CBTK/0003  
Blue

# ANYWHERE/EVERYWHERE AREA RUGS

## NEW OUTDOOR/INDOOR INTRODUCTIONS

### CASTILLE COLLECTION

Machine-Woven of a Blend of Both Outdoor-Use Polyester and Poly-Chenille, Chenille Accents Add Texture and Interest  
 Constructed on a Tapestry Machine for a Unique Finish  
 Transitional, Contemporary and Botanical Designs Lend Themselves to Multiple Environments, Both Indoors and Out  
 Mold/Mildew/Water Resistant; UV Stabilized • Pet-Friendly  
 Pile Height: No Pile (Flat Weave) • Made in Belgium

**SIZES** | 5'3" x 7'6", 8'1" x 11'2", 9'8" x 13'6"



2913/3301  
Palma/Fern



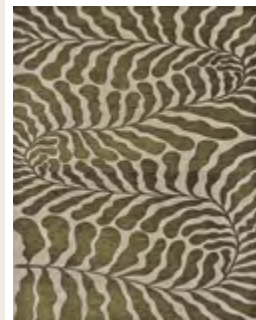
2912/1201  
Graffiti/Black



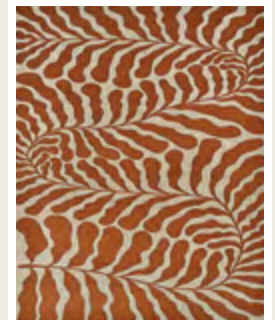
2913/1444  
Palma/Rouge



2913/4111  
Palma/Petrol



2918/1315  
Fiore/Tea Leaf



2918/2703  
Fiore/Terra-Cotta



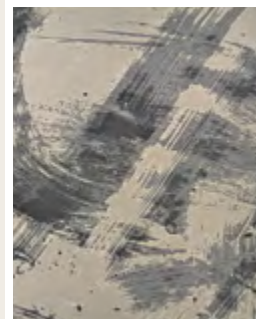
2918/4111  
Fiore/Petrol



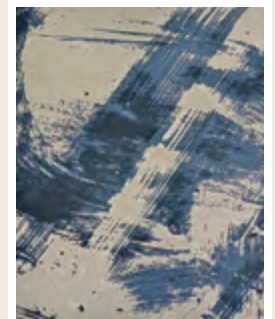
2918/6025  
Fiore/Mocha



2949/1315  
Canvas/Tea Leaf



2949/3001  
Canvas/Glacier



2949/3522  
Canvas/Orion