

# Premiere Brand

A-MAZING - NEWTOWN SQUARE

Volume 1 of 2

2023



**COURISTAN**<sup>®</sup>  
Wall-to-Wall Carpet • Custom Area Rugs



BELMARRA 6158/0001 Indigo - Featured on Page 13



*Honoring our 97-year old heritage in the floor covering industry, the Premiere brand represents the pinnacle in residential carpeting and custom area rugs, appealing to a broad spectrum of lifestyles. Predominantly showcasing wool blends containing natural and synthetic fibers, nylon and heat-set Courtron™ polypropylene products, the hallmark of this brand is its innovation within traditional, transitional, contemporary and casual appearances. This designer-driven product line is built on quality, superior comfort, durability and fashion, and is one of the most recognizable product lines in the industry. Offering a world of decorative fashions, textures and color options for the floor, Premiere's decorative patterns are enhanced through Axminster, Wilton, flatwoven, hand-loomed and tufted constructions that feature loop, cut and loop, multi-level loop and cut-pile appearances. Offering a world of decorating options and flexibility, there is no other brand in today's carpet industry that meets the consumer demand for high-quality, durable products.*



CUSTOM RUG PROGRAM

*\* Note: These Products can be fabricated into Custom Size Rugs. Available Finishing Options include, Wool Serging, Synthetic Serging, Chenille Bindings, Cotton Fabric Bindings, Linen Bindings, Courtron™ Polypropylene Bindings (For Outdoor/Indoor Usage) and 3/8" Synthetic Binding (For Outdoor/Indoor Usage).*

*Available applied Backing Options include, Non-Skid, Felt, Outdoor Living Cushion (For Outdoor/Indoor Usage), No Backing (Must Be Specified).*



Table of Contents

1	A-mazing	26	Cobbleweave	51	Kathmandu
2	Addington	27	Coconut Creek <i>New</i>	52	Key Largo <i>New</i>
3	Anakena	28	Columbus	53	Kilkenny <i>New</i>
4	Andes	29	Coral Gables	54	Laguna Beach <i>New</i>
5	Antibes	30	Cottage Weave	55	Lantana <i>New</i>
6	Antoinette	31	Creekside	56	Legacy Collection Ardmore
7	Ariana Stria	32	Crossweave	57	Legacy Collection Ardmore II
8	Astin	33	Cuyahoga	58	Legacy Collection Tramore
9	Aurora <i>New</i>	34	Daze of Color	59	Legacy Collection Wexford
10	Avalon	35	Dazzle	60	Lulu
11	Avery	36	Delray Beach <i>New</i>	61	Maldives
12	Battery Park	37	Downing Street	62	Manhattan Beach <i>New</i>
13	Belmarra <i>New</i>	38	Elkhorn	63	Manitou Springs <i>New</i>
14	Belvedere <i>New</i>	39	Emerald Isle <i>New</i>	64	Marco Island <i>New</i>
15	Bromley Collection	40	Essence III	65	Morgan
16	Candlewood	41	Fairfax	66	Nature's Path
17	Canoe Bay	42	Fairway	67	New Bern <i>New</i>
18	Canterbury	43	Fire Diamonds	68	Newtown Square <i>New</i>
19	Canyon Ridge	44	Gibson		
20	Cap Ferrat	45	Glimmer		
21	Carousel	46	Grafton Square		
22	Central Park	47	Granby		
23	Chapel Hill <i>New</i>	48	Greyson		
24	Cheyenne	49	Huntington Beach		
25	City Scope	50	Kalahari Desert		



# A-Mazing

**FIBER**  
100% Pure Wool

**CONSTRUCTION**  
Hand-Tufted Loop Pile

**WIDTH**  
15'

**REPEAT**  
12" W x 12" L  
(Straight Match)



SHOWN IN SETTING - 3968/0004 SKY



3968/0001 Natural



3968/0002 Beige



3968/0003 Blue



3968/0004 Sky



3968/0005 Green



# Addington

**FIBER**  
100% Pure Wool

**WEAVE**  
Hand-Loomed Loop Pile

**WIDTH**  
15'

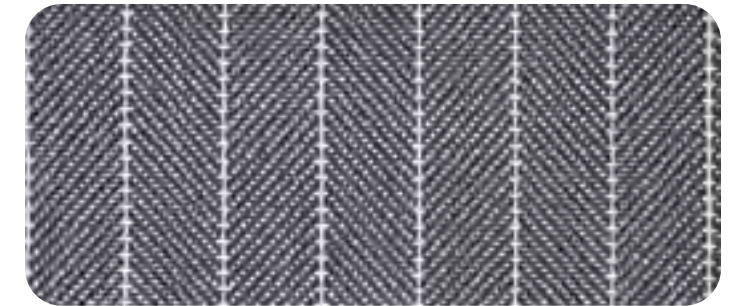
**REPEAT**  
6.5" W x 3.3" L  
(Straight Match)



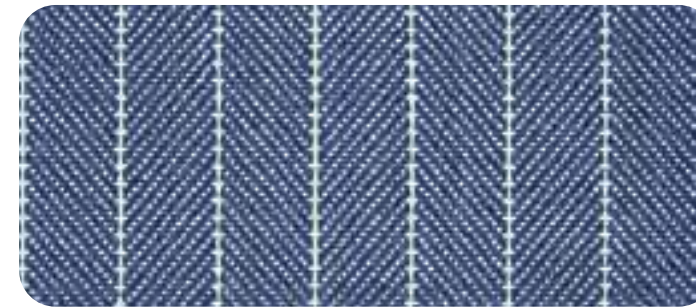
SHOWN IN SETTING - 6251/0003 BLUE



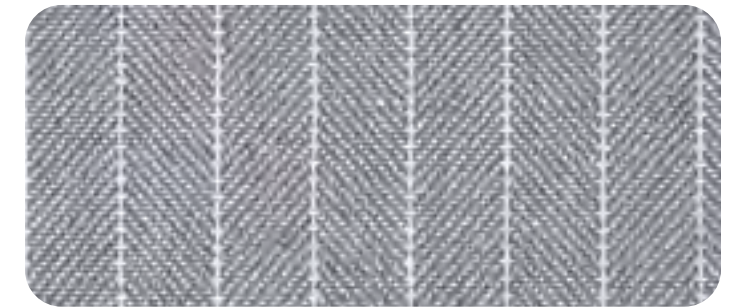
6251/0001 Light Grey



6251/0002 Charcoal



6251/0003 Blue



6251/0004 Dark Grey



# Anakena

**FIBER**  
100% Pure Wool

**CONSTRUCTION**  
Hand-Tufted Loop Pile

**WIDTH**  
15'

**REPEAT**  
16" W x 16" L  
(Half-Drop Match)



SHOWN IN SETTING - 6750/0004 DENIM



6750/0001 Fern



6750/0002 Natural



6750/0003 Tusk



6750/0004 Denim



6750/0005 Turquoise



# Andes

**FIBER**  
100% ECONYL® Nylon

**WEAVE**  
Hand-Loomed, Tip-Sheared  
Pile

**WIDTH**  
15'

**REPEAT**  
4" W x 2" L  
(Straight Match)



SHOWN IN SETTING - 6220/0004 NAVY



6220/0001 Natural



6220/0003 Granite



6220/0004 Navy



# Antibes

**FIBER**  
70% Wool/30% Viscose

**WEAVE**  
Woven Wilton Loop Pile

**WIDTH**  
13'2" (4 Meters)

**REPEAT**  
9.25" W x 12.13" L  
(Half-Drop Match)



SHOWN IN SETTING - 2251/0001 DRIFTWOOD



2251/0001 Driftwood



2251/0002 Seaglass



2251/0003 Cool Mist



2251/0004 Mojito



2251/0005 Beach



# Antoinette

**FIBER**  
100% Pure Virgin Wool

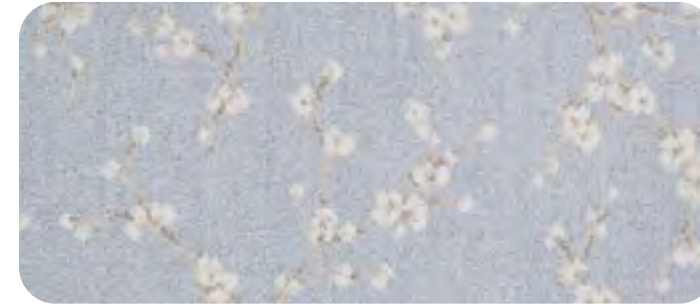
**WEAVE**  
Woven Wilton Loop Pile

**WIDTH**  
13'2" (4 Meters)

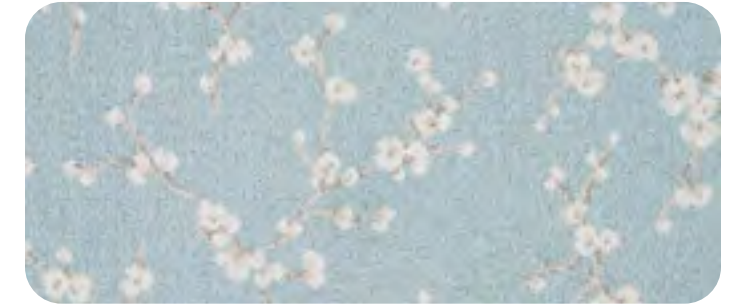
**REPEAT**  
26.2" W x 26.1" L  
(Straight Match)



SHOWN IN SETTING - 3960/0002 MEADOW GREEN



3960/0001 Grey Sky



3960/0002 Meadow Green



3960/0003 Soft Blue



# Ariana Stria

**FIBER**  
100% Pure Virgin Wool

**WEAVE**  
Woven Wilton Loop Pile

**WIDTH**  
13'2" (4 Meters)

**REPEAT**  
39.4" W x 59" L  
(Straight Match)



SHOWN IN SETTING - 3790/0001 DENIM



3790/0001 Denim



3790/0002 Light Grey



3790/0003 Sunburst



3790/0004 Soft Blue



3790/0005 Black



# Astin

**FIBER**  
100% Pure Wool

**WEAVE**  
Woven Wilton Flatweave

**WIDTH**  
13'2" (4 Meters)

**REPEAT**  
6.4" Wide



SHOWN IN SETTING - 4647/0002 SPRINGTIME



4647/0001 French Blue



4647/0002 Springtime



4647/0003 Persimmon



# Aurora

**FIBER**  
100% Pure Wool

**WEAVE**  
Hand-Loomed Loop Pile

**WIDTH**  
15'

**REPEAT**  
8" W x 15" L  
(Straight Match)



SHOWN IN SETTING - 7540/0002 SAND



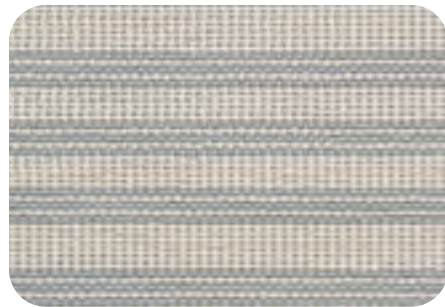
7540/0001 Blue



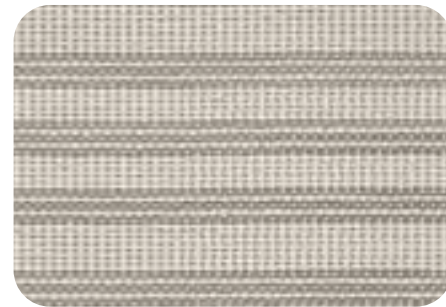
7540/0002 Sand



7540/0003 Charcoal



7540/0004 Teal



7540/0005 Taupe



# Avalon

**FIBER**  
100% Pure Wool

**WEAVE**  
Woven Wilton Loop Pile

**WIDTH**  
13'2" (4 Meters)

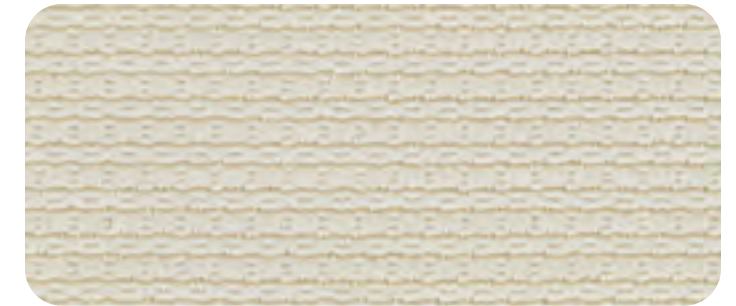
**REPEAT**  
.63" W x .75" L  
(Straight Match)



SHOWN IN SETTING - 2111/0001 MIST



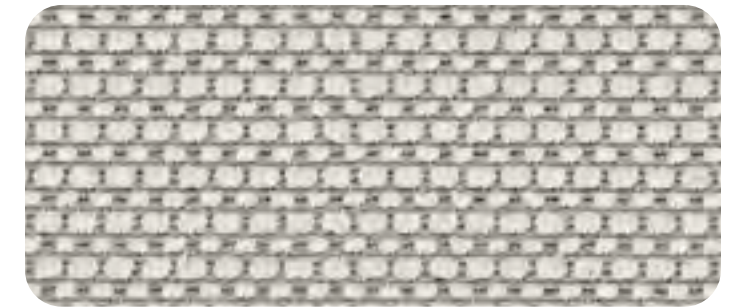
2111/0001 Mist



2111/0002 Surf



2111/0003 Ocean



2111/0004 Storm





# Avery

**FIBER**  
83% New Zealand Wool/  
17% Nylon

**WEAVE**  
Woven Wilton Loop Pile

**WIDTH**  
12'

**REPEAT**  
12" W x 12" L  
(Straight Match)



SHOWN IN SETTING - 0794/0001 TAWNY



0794/0001 Tawny



0794/0002 Pewter



0794/0003 Mushroom



0794/0004 Cornflower



0794/0005 Indigo



0794/0006 Pepper



# Battery Park

**FIBER**  
100% Pure Wool

**WEAVE**  
Woven Wilton Loop Pile

**WIDTH**  
13'

**REPEAT**  
8.20" W x 7.10" L  
(Straight Match)



SHOWN IN SETTING - 6214/0001 MINERAL ICE



6214/0001 Mineral Ice



6214/0002 Natural Linen



6214/0003 Pacific Blue



6214/0004 Caribbean Turquoise



# Belmarra

**FIBER**  
100% Pure Wool

**WEAVE**  
Hand-Loomed Loop Pile

**WIDTH**  
15'

**REPEAT**  
2" W x 3" L  
(Straight Match)



SHOWN IN SETTING - 6158/0001 INDIGO



6158/0001 Indigo



6158/0002 Granite



6158/0003 Coal



6158/0004 Onyx



# Belvedere

**FIBER**  
100% Pure New Zealand Wool

**WEAVE**  
Woven Wilton Loop Pile

**WIDTH**  
13'

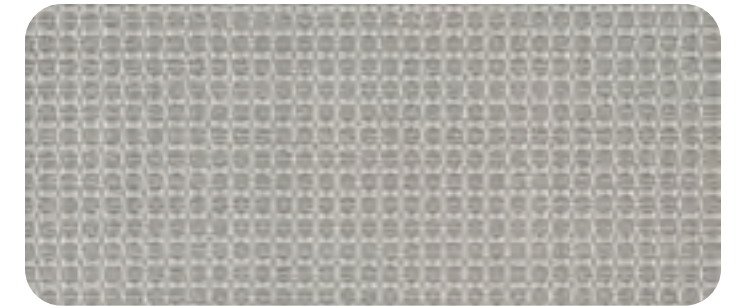
**REPEAT**  
1" W x 1" L  
(Straight Match)



SHOWN IN SETTING - 8520/0003 BLUE



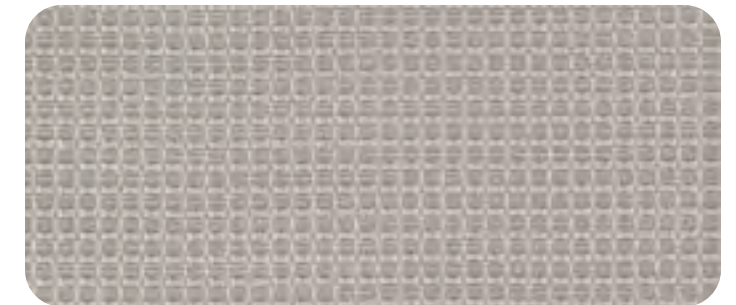
8520/0001 Beige



8520/0002 Grey



8520/0003 Blue



8520/0004 Taupe



# Bromley Collection

**FIBER**  
A Blend of Wool, Courtron™  
Polypropylene and Polyester

**WEAVE**  
Face-to-Face Woven Wilton  
Shag

**WIDTH**  
13'2" (4 Meters)

**REPEAT**  
No Repeat



SHOWN IN SETTING - 1311/0002 BRECKENRIDGE/ASH



1311/0001 Breckenridge/Frost ■



1311/0002 Breckenridge/Ash



1311/0003 Breckenridge/Bronze ■



1311/0004 Breckenridge/Snow ■



1311/0005 Breckenridge/Copper

■ Available in Coordinating Area Rugs



# Candlewood

**FIBER**  
90% Wool/10% Nylon

**CONSTRUCTION**  
Hand-Tufted, Tip-Sheared Pile

**WIDTH**  
15'

**REPEAT**  
22" W x 24" L  
(Straight Match)



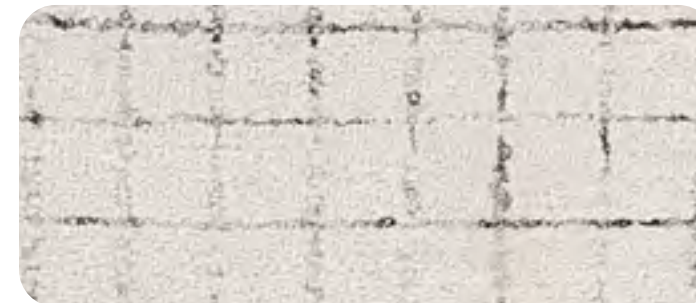
SHOWN IN SETTING - 6980/0002 MARINE



6980/0001 Sand



6980/0002 Marine



6980/0003 Onyx



6980/0004 Plum



# Canoe Bay

**FIBER**  
75% Polyester/25% Wool

**WEAVE**  
Hand-Loomed Loop Pile

**WIDTH**  
15'

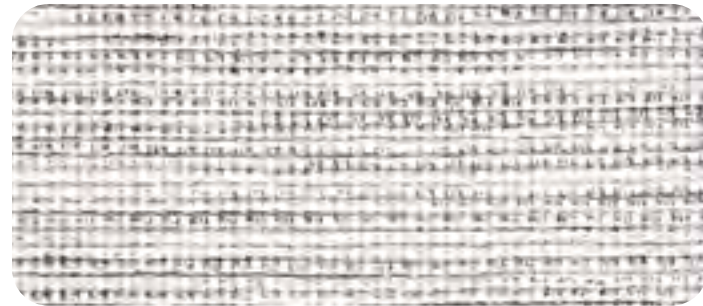
**REPEAT**  
Random Repeat in  
Both Width and Length



SHOWN IN SETTING - 7395/0002 OYSTER



7395/0001 Denim



7395/0002 Oyster



7395/0003 Midnight



7395/0004 Natural



# Canterbury

**FIBER**  
100% Pure Wool

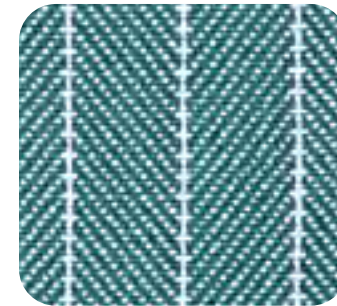
**WEAVE**  
Hand-Loomed Loop Pile

**WIDTH**  
15'

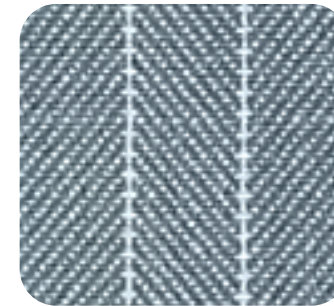
**REPEAT**  
6.5" W x 3.3" L  
(Straight Match)



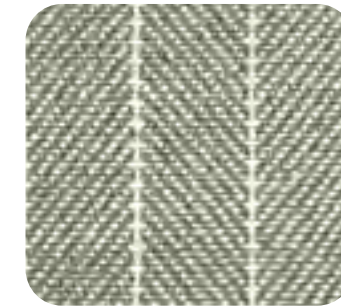
SHOWN IN SETTING - 6359/0004 TURQUOISE



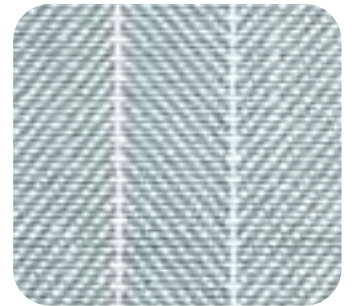
6359/0001 Cyan



6359/0002 Soft Blue



6359/0003 Light Green



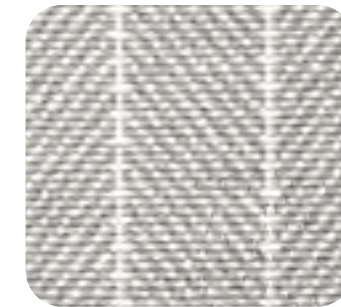
6359/0004 Turquoise



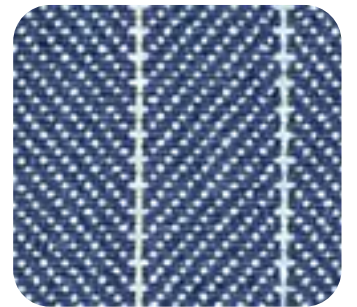
6359/0005 Bisque



6359/0006 Sand



6359/0007 Platinum



6359/0008 Navy



# Canyon Ridge

**FIBER**  
100% Pure Wool

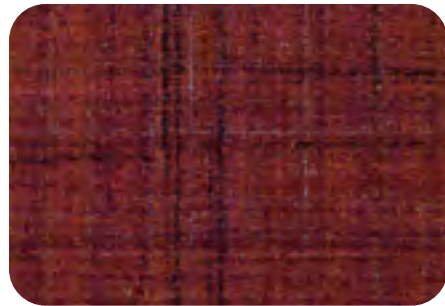
**CONSTRUCTION**  
Hand-Tufted Loop Pile

**WIDTH**  
15'

**REPEAT**  
Random Repeat in  
Both Width and Length



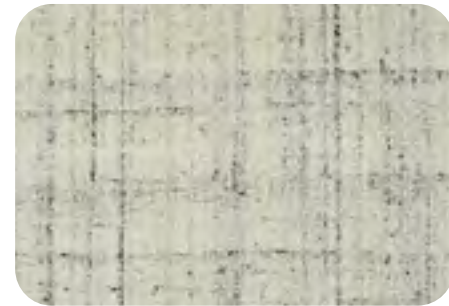
SHOWN IN SETTING - 2258/0004 AUTUMN FOLIAGE



2258/0001 Sunset



2258/0002 Morning Haze



2258/0003 Sandstone



2258/0004 Autumn Foliage



2258/0005 Marble Rapids



# Cap Ferrat

**FIBER**  
70% Wool/30% Viscose

**WEAVE**  
Woven Wilton Loop Pile

**WIDTH**  
13'2" (4 Meters)

**REPEAT**  
5.75" W x 6.31" L  
(Straight Match)



SHOWN IN SETTING - 2250/0004 MOJITO



2250/0001 Driftwood



2250/0002 Seaglass



2250/0003 Cool Mist



2250/0004 Mojito



2250/0005 Beach



# Carousel

**FIBER**  
100% Pure Wool

**CONSTRUCTION**  
Hand-Tufted Loop Pile

**WIDTH**  
15'

**REPEAT**  
10" W x 16.5" L  
(Straight Match)



SHOWN IN SETTING - 3780/0003 NAVY



3780/0001 Seafoam



3780/0002 Apple



3780/0003 Navy



3780/0004 Mist



3780/0005 Fog



# Central Park

**FIBER**  
100% Pure Wool

**WEAVE**  
Woven Wilton Loop Pile

**WIDTH**  
13'

**REPEAT**  
5.20" W x 4.72" L  
(Straight Match)



SHOWN IN SETTING - 6210/0004 CARIBBEAN TURQUOISE



6210/0001 Mineral Ice



6210/0002 Natural Linen



6210/0003 Pacific Blue



6210/0004 Caribbean Turquoise



# Chapel Hill

**FIBER**  
100% Pure New Zealand Wool

**CONSTRUCTION**  
Tufted Loop Pile

**WIDTH**  
13'2" (4 Meters)

**REPEAT**  
No Repeat



SHOWN IN SETTING - 2620/0001 ALMOND



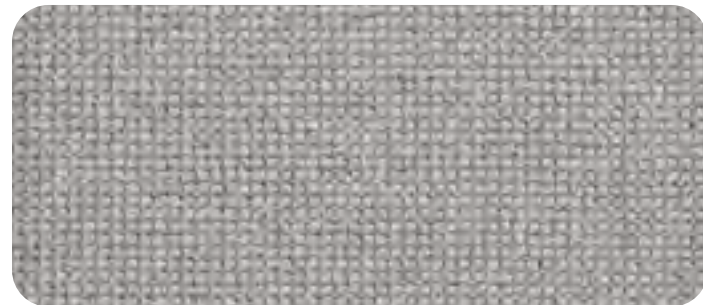
2620/0001 Almond



2620/0002 Fog



2620/0003 Heather Grey



2620/0004 Seal Grey



# Cheyenne

**FIBER**  
75% Wool/25% Polyester

**WEAVE**  
Hand-Loomed Loop Pile

**WIDTH**  
15'

**REPEAT**  
Random Repeat in  
Both Width and Length



SHOWN IN SETTING - 7359/0003 RIVERBANK



7359/0001 Snowcap



7359/0002 Glacier Trail



7359/0003 Riverbank



7359/0004 Forest Trail



7359/0005 Bison Brown



# City Scape

**FIBER**  
100% Pure Wool

**WEAVE**  
Hand-Loomed Loop Pile

**WIDTH**  
15'

**REPEAT**  
No Repeat



SHOWN IN SETTING - 6016/0005 EASTSIDE



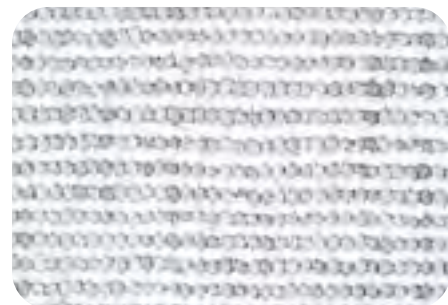
6016/0001 Tribeca



6016/0002 Chelsea



6016/0003 Gramercy



6016/0004 Uptown



6016/0005 Eastside



# Cobbleweave

**FIBER**  
100% Pure Wool

**CONSTRUCTION**  
Hand-Tufted Loop Pile

**WIDTH**  
15'

**REPEAT**  
7.5" W x 11.5" L  
(Straight Match)



SHOWN IN SETTING - 7602/0001 BLUE



7602/0001 Blue



7602/0002 Turquoise



7602/0003 Lemon-Lime



7602/0004 Oyster



7602/0005 Dune





# Coconut Creek

**FIBER**  
100% Pure Wool

**WEAVE**  
Hand-Loomed Loop Pile

**WIDTH**  
15'

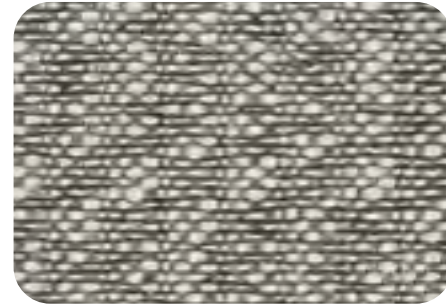
**REPEAT**  
Random Repeat in  
Both Width and Length



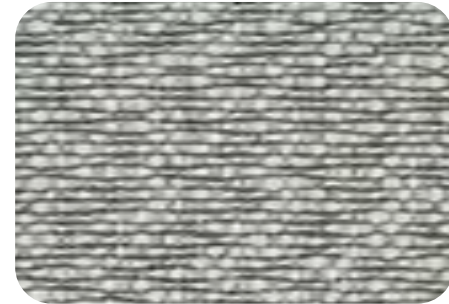
SHOWN IN SETTING - 6630/4003 PLATINUM



6630/4001 Grey



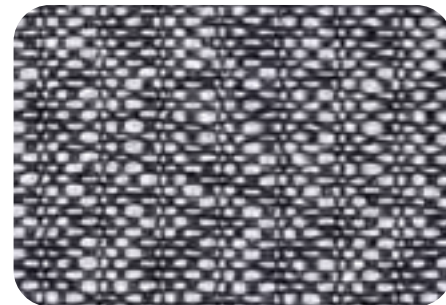
6630/4002 Mushroom



6630/4003 Platinum



6630/4004 Beige



6630/4005 Navy



# Columbus

**FIBER**  
100% Pure Wool

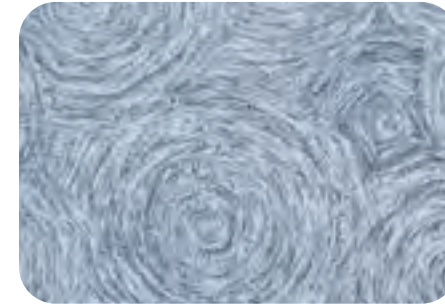
**CONSTRUCTION**  
Hand-Tufted Loop Pile

**WIDTH**  
15'

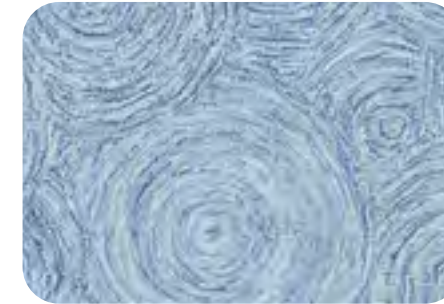
**REPEAT**  
36" W x 32" L  
(Straight Match)



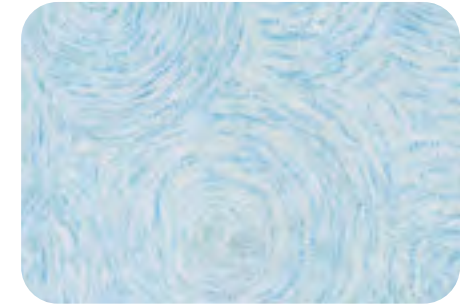
SHOWN IN SETTING - 6230/0004 MIDNIGHT



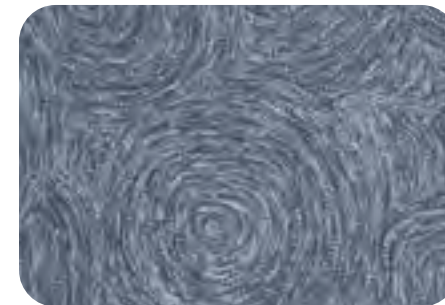
6230/0001 Graphite



6230/0002 Blue



6230/0003 Seafoam



6230/0004 Midnight



6230/0005 Light Grey



# Coral Gables

**FIBER**  
100% Pure Wool

**WEAVE**  
Woven Wilton Loop Pile

**WIDTH**  
13'2" (4 Meters)

**REPEAT**  
31.5" W x 31.5" L  
(Straight Match)



SHOWN IN SETTING - 6330/0004 TOFFEE



6330/0001 Tobacco



6330/0002 Seafoam



6330/0003 Bisque



6330/0004 Toffee



# Cottage Weave

**FIBER**  
70% Wool/30% Polyester

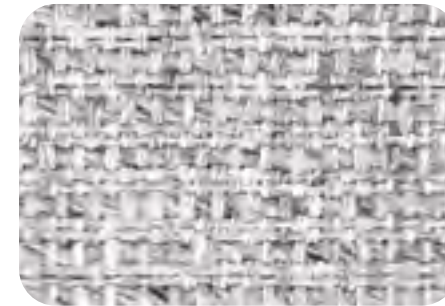
**WEAVE**  
Hand-Loomed Loop Pile

**WIDTH**  
15'

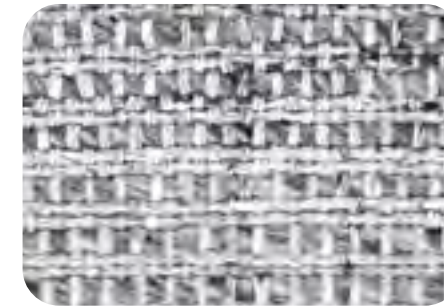
**REPEAT**  
No Repeat



SHOWN IN SETTING - 6002/0002 SHALE



6002/0001 Oatmeal



6002/0002 Shale



6002/0003 Kelp



6002/0004 Mercury



6002/0005 Lapis



# Creekside

**FIBER**  
70% Wool/30% Polyester

**WEAVE**  
Hand-Loomed Loop Pile

**WIDTH**  
15'

**REPEAT**  
Random Repeat in  
Both Width and Length



SHOWN IN SETTING - 8610/0003 GRANITE



8610/0001 Steel



8610/0002 Earth



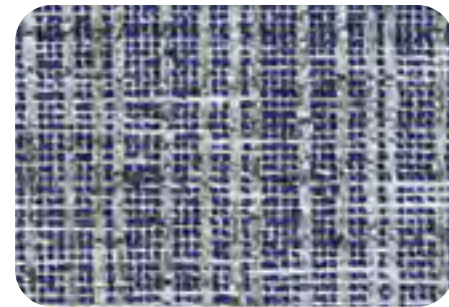
8610/0003 Granite



8610/0004 Mink



8610/0005 Natural



8610/0006 Denim



# Crossweave

**FIBER**  
100% Pure Wool

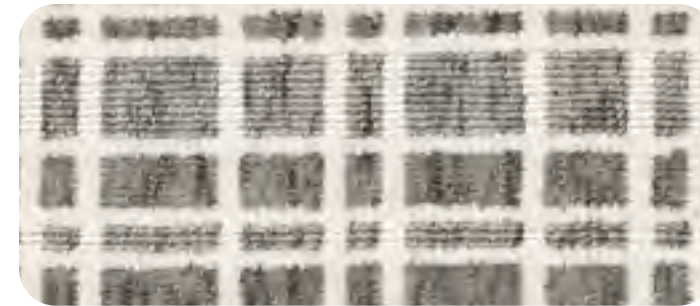
**WEAVE**  
Hand-Loomed  
Cut and Loop Pile

**WIDTH**  
15'

**REPEAT**  
4" W x 7" L  
(Straight Match)



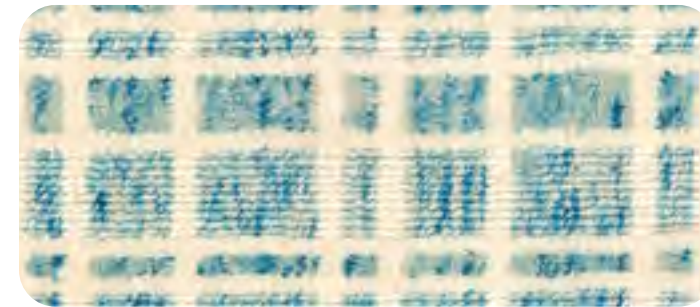
SHOWN IN SETTING - 6850/0001 RAINY GREY



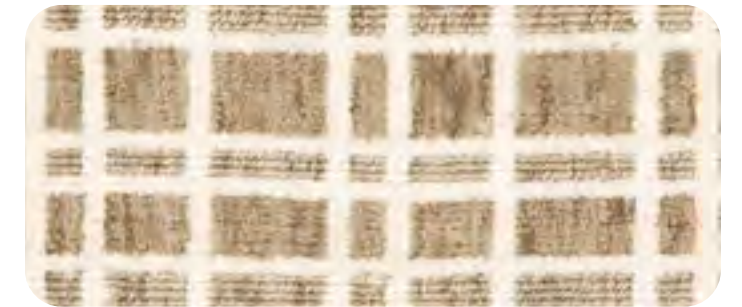
6850/0001 Rainy Grey



6850/0002 Spring Green



6850/0003 Ocean Blue



6850/0004 Natural Beige



# Cuyahoga

**FIBER**  
100% Pure Wool

**WEAVE**  
Hand-Loomed Loop Pile

**WIDTH**  
15'

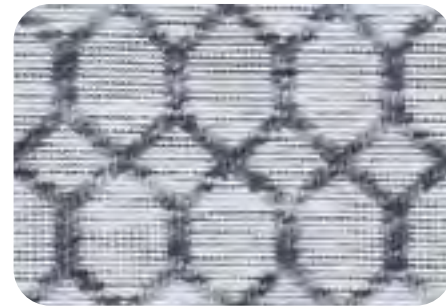
**REPEAT**  
5" W x 6.3" L  
(Half-Drop Match)



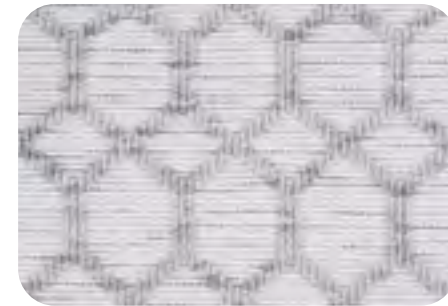
SHOWN IN SETTING - 8801/0001 NAVY



8801/0001 Navy



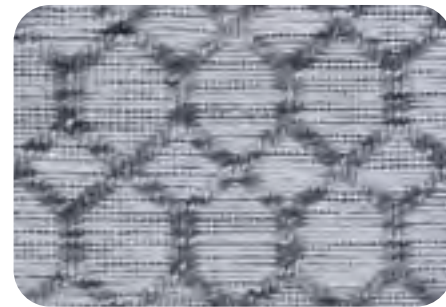
8801/0002 Aubergine



8801/0003 London Fog



8801/0004 Dark Grey



8801/0005 Light Grey



# Daze of Color

**FIBER**  
100% Pure Wool

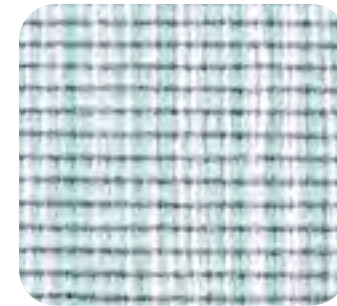
**WEAVE**  
Hand-Loomed Loop Pile

**WIDTH**  
15'

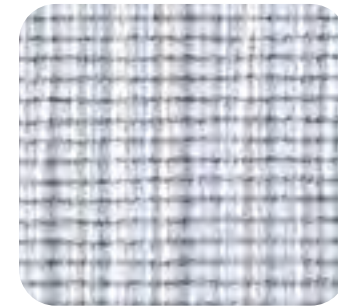
**REPEAT**  
Random Repeat in Width



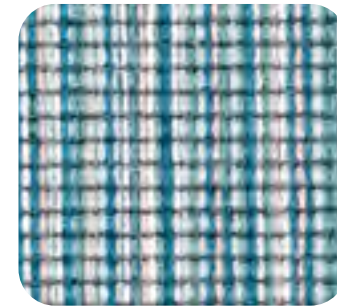
SHOWN IN SETTING - 6201/0001 TIDAL LAGOON



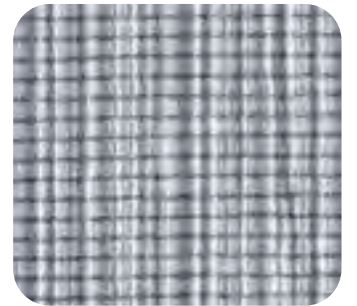
6201/0001 Tidal Lagoon



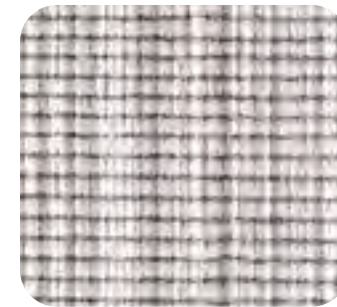
6201/0002 Winter Chill



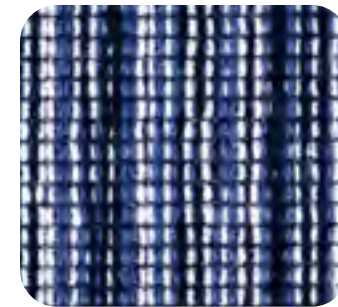
6201/0003 Waterfall



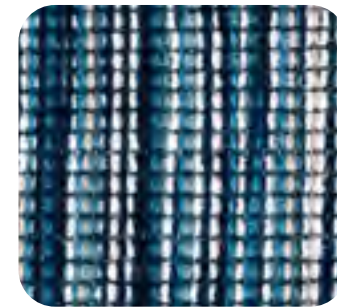
6201/0004 River Wild



6201/0005 Beach Walk



6201/0006 Ocean Drive



6201/0007 Blue Grass



6201/0008 Taos Sunset



# Dazzle

**FIBER**  
100% Wool  
with Lurex Accents

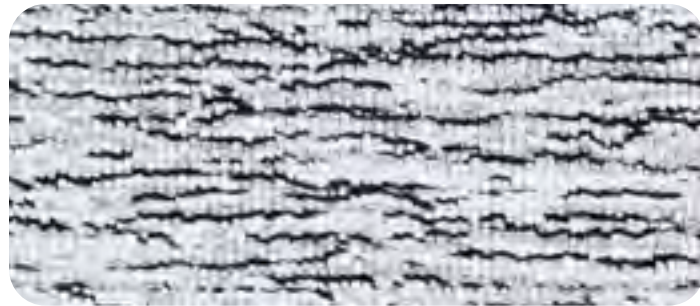
**CONSTRUCTION**  
Hand-Tufted Loop Pile

**WIDTH**  
15'

**REPEAT**  
No Repeat



SHOWN IN SETTING - 2259/0001 IVORY



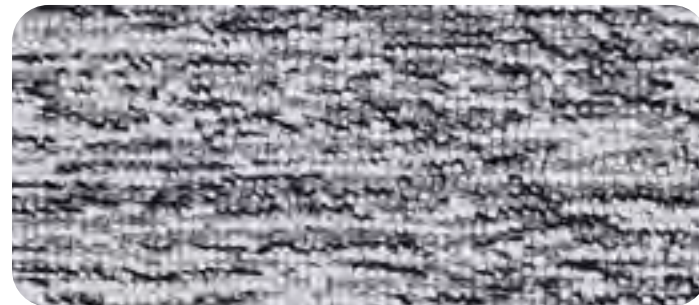
2259/0001 Ivory



2259/0002 Silver



2259/0003 Gold



2259/0004 Gray



# Delray Beach

**FIBER**  
100% ECONYL® Nylon

**WEAVE**  
Hand-Loomed Cut and Loop,  
Random Tip-Sheared Pile

**WIDTH**  
15'

**REPEAT**  
Random Repeat in  
Both Width and Length



SHOWN IN SETTING - 6155/0001 NIGHT SKY



6155/0001 Night Sky



6155/0002 Aquamarine



6155/0003 Anthracite



6155/0004 Ecu



6155/0005 Alloy



6155/0006 Taupe



6155/0007 Sandstone

# Downing Street

**FIBER**  
65% Wool/35% Tencel®

**WEAVE**  
Woven Wilton Loop Pile

**WIDTH**  
13'2" (4 Meters)

**REPEAT**  
15.74" W x 10.62" L  
(Straight Match)



SHOWN IN SETTING - 2257/0002 ANTIQUE BEIGE



2257/0001 White Sand



2257/0002 Antique Beige



2257/0003 Warm Taupe



2257/0004 Dusk Blue



2257/0005 Pearl Grey



# Elkhorn

**FIBER**  
60% Nylon/40% Wool

**WEAVE**  
Hand-Loomed, Tip-Sheared  
Pile

**WIDTH**  
15'

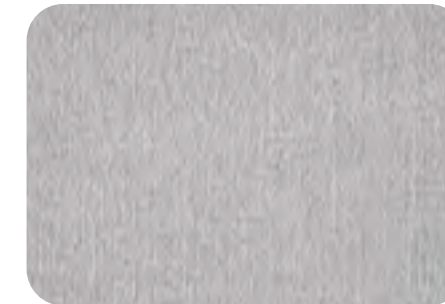
**REPEAT**  
Random Repeat in  
Both Width and Length



SHOWN IN SETTING - 6250/0001 TUSK



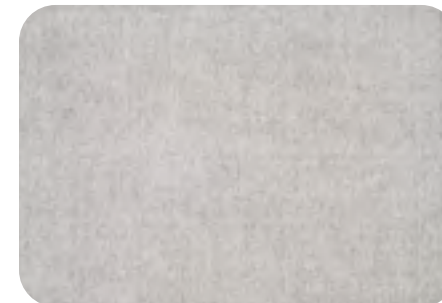
6250/0001 Tusk



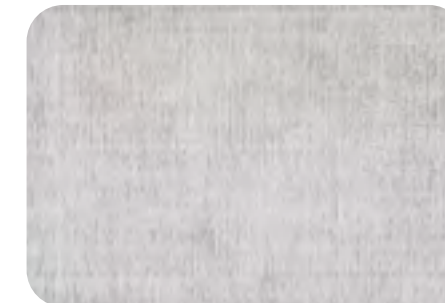
6250/0002 Grey



6250/0003 Charcoal



6250/0004 Moon Fog



6250/0005 Oyster



# Emerald Isle

**FIBER**  
60% Wool/  
40% ECONYL® Nylon

**WEAVE**  
Hand-Loomed Loop Pile

**WIDTH**  
15'

**REPEAT**  
3" W x 7" L  
(Straight Match)



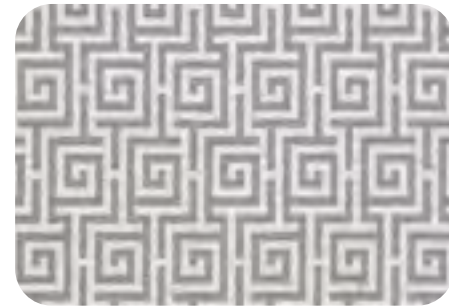
SHOWN IN SETTING - 6189/0003 SLATE



6189/0001 Silver



6189/0002 Blue



6189/0003 Slate



6189/0004 Aqua



6189/0005 Green



# Essence III

**FIBER**  
100% Pure Wool

**WEAVE**  
Raschel Knitted Face-to-Face  
Solid Cut-Pile

**WIDTH**  
13'2" (4 Meters)

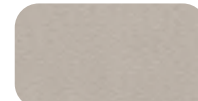
**REPEAT**  
No Repeat



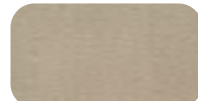
SHOWN IN SETTING - 6801/0011 STERLING



6801/0002  
Porcelain



6801/0003  
Sand



6801/0004  
Havana Tea



6801/0005  
Tea



6801/0006  
Bronze



6801/0007  
Slate



6801/0008  
Pecan



6801/0009  
Chestnut



6801/0010  
Shoreline



6801/0011  
Sterling



6801/0012  
Dust



6801/0013  
Smokey Gray



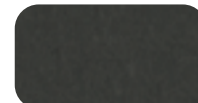
6801/0014  
Ash



6801/0015  
Fossil



6801/0016  
City Gray



6801/0017  
Steel Grey



6801/0018  
Midnight



6801/0019  
Tomato



6801/0020  
Spice



6801/0021  
Sage



6801/0022  
Cabana Green



6801/0023  
Cool Breeze



6801/0024  
Acacia Haze



6801/0025  
Army



6801/0026  
Diamond Dust



6801/0027  
Ocean Breeze



6801/0028  
Nautical



# Fairfax

**FIBER**  
100% Pure Wool

**WEAVE**  
Wilton Woven Flatweave

**WIDTH**  
13'2" (4 Meters)

**REPEAT**  
9.6" Wide



SHOWN IN SETTING - 4842/0001 NAVY BLUE



4842/0001 Navy Blue



4842/0002 Apricot



4842/0003 Cranberry



# Fairway

**FIBER**  
100% Pure New Zealand Wool

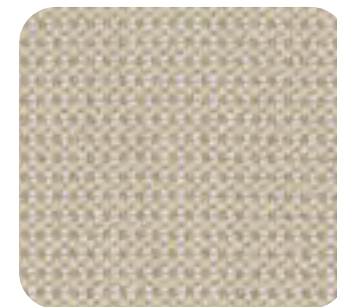
**WEAVE**  
Woven Wilton Loop Pile

**WIDTH**  
12'

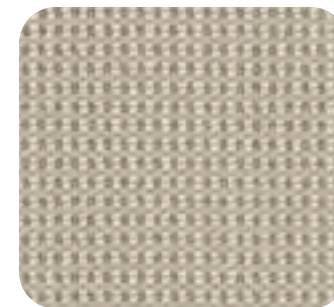
**REPEAT**  
.375" Wide



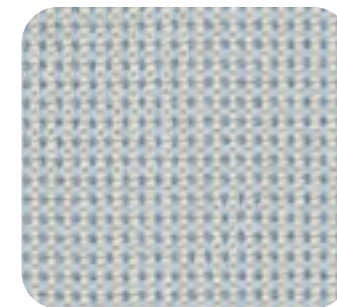
SHOWN IN SETTING - 5398/0003 POOL



5398/0001 Sand Dollar



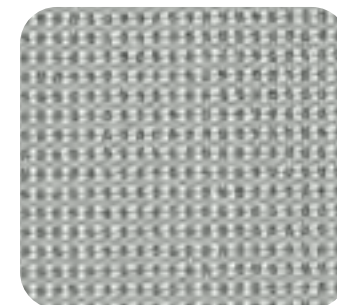
5398/0002 Wood Smoke



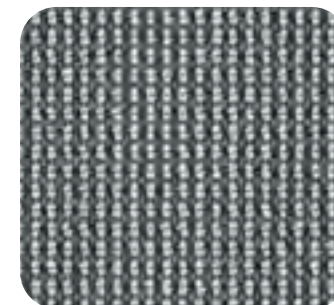
5398/0003 Pool



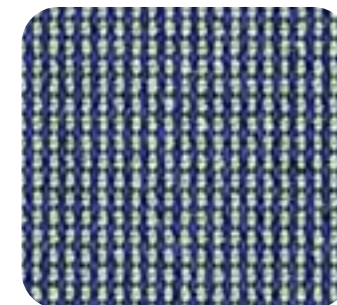
5398/0004 Meadow



5398/0005 Moondust



5398/0006 Flint



5398/0007 Regatta





# Fire Diamonds

**FIBER**  
100% Pure Wool

**CONSTRUCTION**  
Hand-Tufted Loop Pile

**WIDTH**  
15'

**REPEAT**  
15" W x 12" L  
(Straight Match)



SHOWN IN SETTING - 7601/0004 OYSTER



7601/0001 Blue



7601/0002 Turquoise



7601/0003 Lemon-Lime



7601/0004 Oyster



7601/0005 Dune



# Gibson

**FIBER**  
100% Pure Wool

**WEAVE**  
Wilton Woven Flatweave

**WIDTH**  
13'2" (4 Meters)

**REPEAT**  
6.4" Wide



SHOWN IN SETTING - 4654/0001 FRENCH BLUE



4654/0001 French Blue



4654/0002 Black



4654/0003 Apricot



4654/0004 Candy Apple



# Glimmer

**FIBER**  
60% Wool/40% Viscose

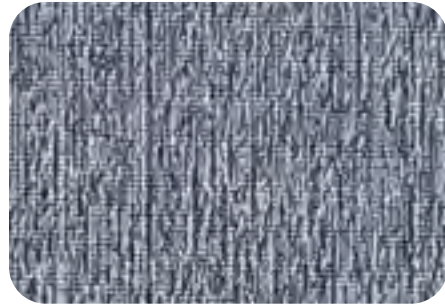
**WEAVE**  
Woven Wilton Loop Pile

**WIDTH**  
13'2" (4 Meters)

**REPEAT**  
No Repeat



SHOWN IN SETTING - 5833/0001 INDIGO



5833/0001 Indigo



5833/0002 Silver



5833/0003 Fog



5833/0004 Porcelain



5833/0005 Chiffon



# Grafton Square

**FIBER**  
65% Wool/35% Tencel®

**WEAVE**  
Woven Wilton Loop Pile

**WIDTH**  
13'2" (4 Meters)

**REPEAT**  
9.25" W x 10" L  
(Straight Match)



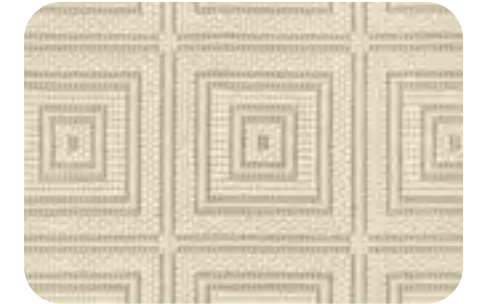
SHOWN IN SETTING - 2255/0004 DUSK BLUE



2255/0001 White Sand



2255/0002 Antique Beige



2255/0003 Warm Taupe



2255/0004 Dusk Blue



2255/0005 Pearl Grey



# Granby

**FIBER**  
80% Wool/20% Viscose

**WEAVE**  
Multi-Level Woven Wilton  
Loop Pile

**WIDTH**  
13'2" (4 Meters)

**REPEAT**  
.78" W x .78" L  
(Half-Drop Match)



SHOWN IN SETTING - 2115/0001 SURF



2115/0001 Surf



2115/0002 Dew



2115/0003 Fog



# Greyson

**FIBER**  
74% Pure New Zealand Wool/  
26% Nylon

**WEAVE**  
Woven Wilton Loop Pile

**WIDTH**  
13'2" (4 Meters)

**REPEAT**  
4" W x 4" L  
(Straight Match)



SHOWN IN SETTING - 8229/0002 ICE BLUE



8229/0001 Cashmere



8229/0002 Ice Blue



8229/0003 Sky



8229/0004 Blonde



8229/0005 Fog



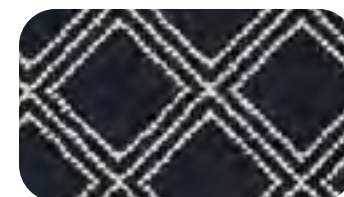
8229/0006 Honey



8229/0007 Granite



8229/0008 Delft



8229/0009 Navy



# Huntington Beach

**FIBER**  
100% Felted Wool

**WEAVE**  
Hand-Loomed Loop Pile

**WIDTH**  
15'

**REPEAT**  
No Repeat



SHOWN IN SETTING - 6503/0003 SEA BREEZE



6503/0001 Sea Shell



6503/0002 Sea Coral



6503/0003 Sea Breeze



# Kalahari Desert

**FIBER**  
100% Pure Wool

**WEAVE**  
Woven Wilton Loop Pile

**WIDTH**  
12'

**REPEAT**  
9" W x 5" L  
(Straight Match)



SHOWN IN SETTING - 6601/0003 ZAMBEZI RIVER



6601/0001 Chobe River



6601/0002 Kruger Park



6601/0003 Zambezi River



6601/0004 Gaborone



6601/0005 Kasane



# Kathmandu

**FIBER**  
100% Pure Wool

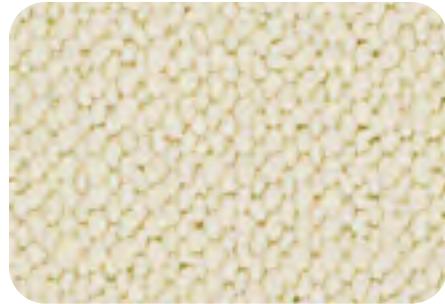
**CONSTRUCTION**  
Tufted Loop Pile

**WIDTH**  
13'2" (4 Meters)

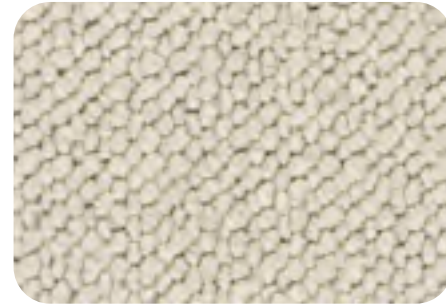
**REPEAT**  
No Repeat



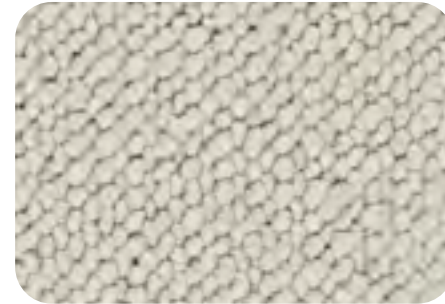
SHOWN IN SETTING - 2261/0001 BUTTERCREAM



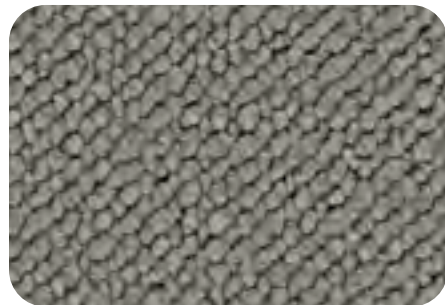
2261/0001 Buttercream



2261/0002 Champagne



2261/0003 Nickel



2261/0004 Gunmetal



2261/0005 Sandalwood



# Key Largo

**FIBER**  
100% Pure Wool

**CONSTRUCTION**  
Hand-Tufted Loop Pile

**WIDTH**  
15'

**REPEAT**  
12" W x 12" L  
(Straight Match)



SHOWN IN SETTING - 6299/0005 BEIGE



6299/0001 Charcoal



6299/0002 Sandstone



6299/0003 Green



6299/0004 Sky Blue



6299/0005 Beige



# Kilkenny

**FIBER**  
100% Pure Wool

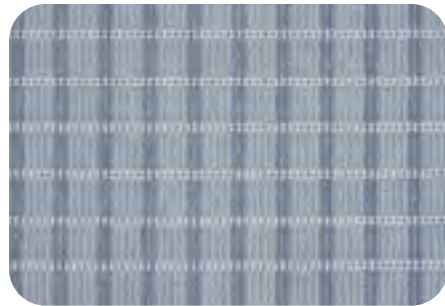
**WEAVE**  
Woven Wilton Loop Pile

**WIDTH**  
15'

**REPEAT**  
2" W x 2" L  
(Straight Match)



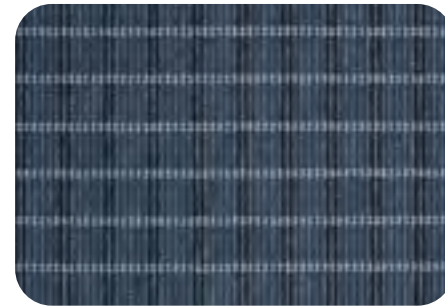
SHOWN IN SETTING - 6280/0002 GREEN



6280/0001 Light Blue



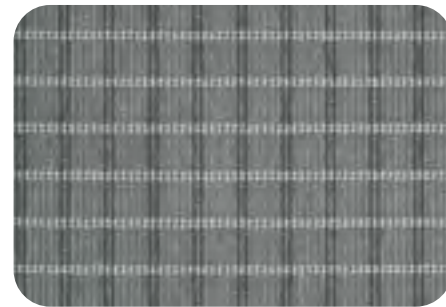
6280/0002 Green



6280/0003 Dark Blue



6280/0004 Beige



6280/0005 Grey



# Laguna Beach

**FIBER**  
100% Pure New Wool

**WEAVE**  
Hand-Loomed Flatweave

**WIDTH**  
15'

**REPEAT**  
Random Repeat in  
Both Width and Length



SHOWN IN SETTING - 9610/0001 FERN



9610/0001 Fern



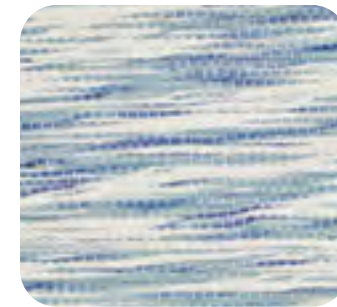
9610/0002 Lime



9610/0003 Charcoal



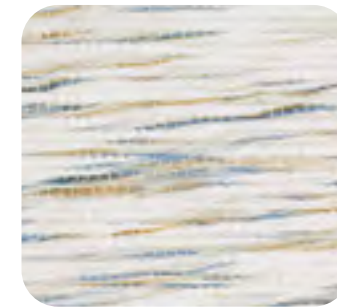
9610/0004 Grey



9610/0005 Blue



9610/0006 Teal



9610/0007 Multi



# Lantana

**FIBER**  
50% Wool / 50% Polyester

**WEAVE**  
Hand-Loomed Loop Pile

**WIDTH**  
15'

**REPEAT**  
Random Repeat in  
Both Width and Length



SHOWN IN SETTING - 8649/0002 GRANITE



8649/0001 Beige



8649/0002 Granite



8649/0003 Glacier



8649/0004 Stone



8649/0005 Silver Blue



8649/0006 Dusk



# Legacy Collection | Ardmore

**FIBER**  
100% Pure Wool

**WEAVE**  
Woven Wilton Loop Pile

**WIDTH**  
13'2" (4 Meters)

**REPEAT**  
1" W x 1" L  
(Half-Drop Match)



SHOWN IN SETTING - 0631/0003 DRESDEN BLUE ON WHITE



0631/0002  
Evergreen on White



0631/0003  
Dresden Blue on White



0631/0005  
Yellow-Blue on White



0631/0006  
Celadon



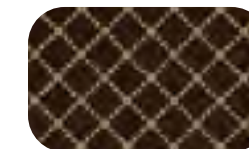
0631/0007  
Evergreen



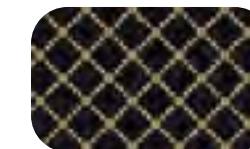
0631/0008  
Dresden Blue



0631/0009  
Camel



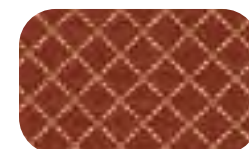
0631/0010  
Chocolate



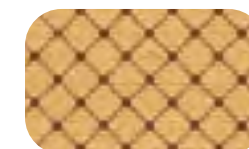
0631/0011  
Midnight



0631/0013  
French Beige



0631/0015  
Sedona Red



0631/0016  
Light Gold



# Legacy Collection | *Ardmore II*

**FIBER**  
100% Pure Wool

**WEAVE**  
Woven Wilton Loop Pile

**WIDTH**  
13'2" (4 Meters)

**REPEAT**  
1" W x 1" L  
(Half-Drop Match)



SHOWN IN SETTING - 0632/0022 DENIM



0632/0017 Alabaster



0632/0018 Crème Caramel



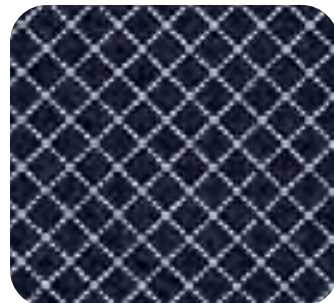
0632/0019 Chambray



0632/0020 Petal



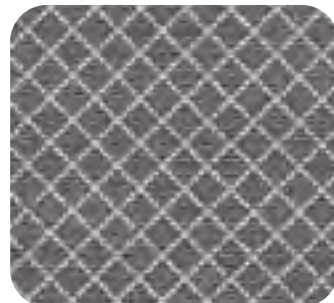
0632/0021 Caramel



0632/0022 Denim



0632/0023 Carnation



0632/0024 Slate



# Legacy Collection | *Tramore*

**FIBER**  
100% Pure Wool

**WEAVE**  
Woven Wilton Loop Pile

**WIDTH**  
13'2" (4 Meters)

**REPEAT**  
7.87" W x 7.87" L  
(Half-Drop Match)



SHOWN IN SETTING - 1151/0015 SEDONA RED



1151/0002  
Evergreen on White



1151/0003  
Dresden Blue on White



1151/0007  
Evergreen



1151/0008  
Dresden Blue



1151/0011  
Midnight



1151/0013  
French Beige



1151/0015  
Sedona Red





# Legacy Collection | *Wexford*

**FIBER**  
100% Pure Wool

**WEAVE**  
Woven Wilton Loop Pile

**WIDTH**  
13'2" (4 Meters)

**REPEAT**  
6.25" W x 6.25" L  
(Half-Drop Match)



SHOWN IN SETTING - 0431/0011 MIDNIGHT



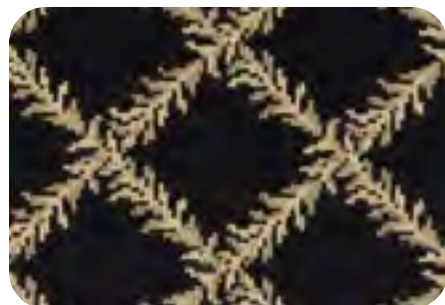
0431/0002 Evergreen on White



0431/0003 Dresden Blue on White



0431/0006 Celadon



0431/0011 Midnight



0431/0015 Sedona Red



# Lulu

**FIBER**  
100% Pure Wool

**CONSTRUCTION**  
Tufted Loop Pile

**WIDTH**  
13'2" (4 Meters)

**REPEAT**  
3.75" Wide



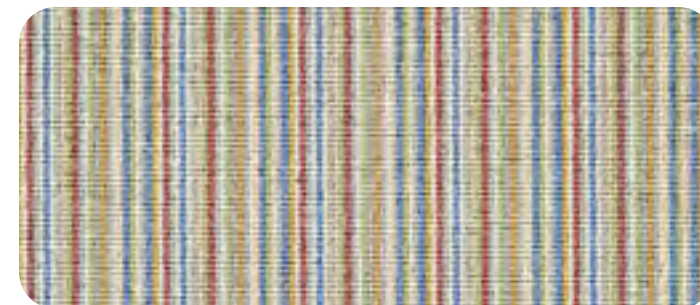
SHOWN IN SETTING - 2231/0006 DENIM



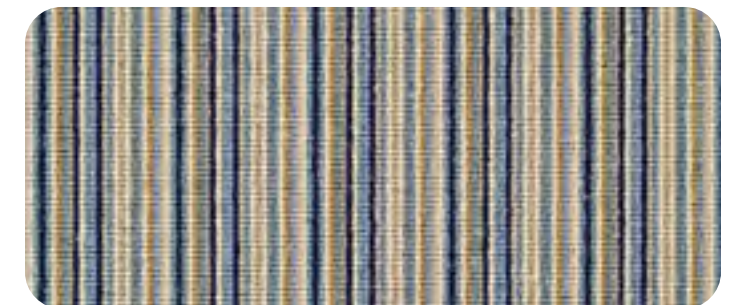
2231/0001 Limeade



2231/0004 Varsity



2231/0005 Meadow



2231/0006 Denim



# Maldives

**FIBER**  
100% Pure Wool

**CONSTRUCTION**  
Hand-Tufted Loop Pile

**WIDTH**  
15'

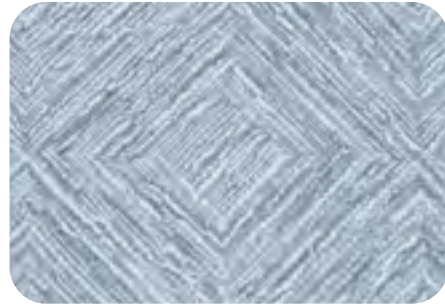
**REPEAT**  
12.5" W x 12.5" L  
(Straight Match)



SHOWN IN SETTING - 2265/0002 AQUAMARINE



2265/0001 Marine Blue



2265/0002 Aquamarine



2265/0003 Sand Dollar



2265/0004 Oyster Shell



2265/0005 Starfish



# Manhattan Beach

**FIBER**  
100% Pure Wool

**WEAVE**  
Hand-Loomed  
Cut and Loop Pile

**WIDTH**  
15'

**REPEAT**  
Random Repeat in  
Both Width and Length



SHOWN IN SETTING - 9635/0003 NAVY



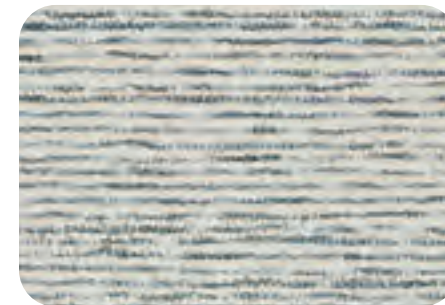
9635/0001 Anthracite



9635/0002 Multi



9635/0003 Navy



9635/0004 Teal



9635/0005 Sandstone



# Manitou Springs

**FIBER**  
70% Wool/30% Polyester

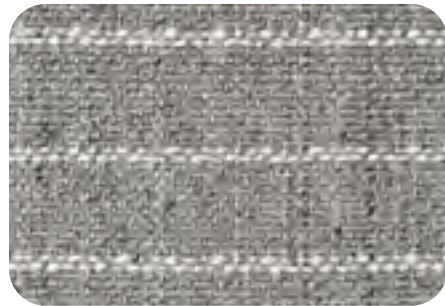
**WEAVE**  
Hand-Loomed Loop Pile

**WIDTH**  
15'

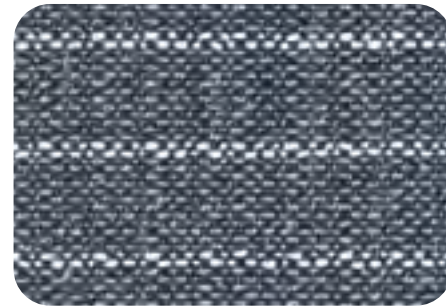
**REPEAT**  
4" Wide



SHOWN IN SETTING - 6925/0003 BEIGE



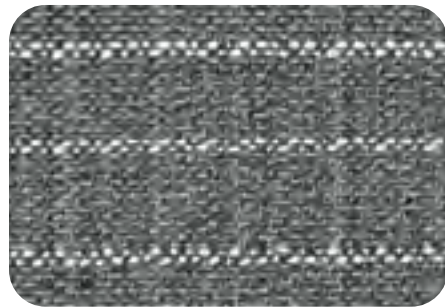
6925/0001 Grey



6925/0002 Blue



6925/0003 Beige



6925/0004 Charcoal



6925/0005 Platinum



# Marco Island

**FIBER**  
100% Pure Wool

**WEAVE**  
Hand-Loomed Loop Pile

**WIDTH**  
15'

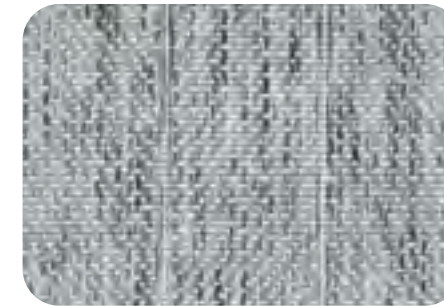
**REPEAT**  
11" W x 1" L  
(Straight Match)



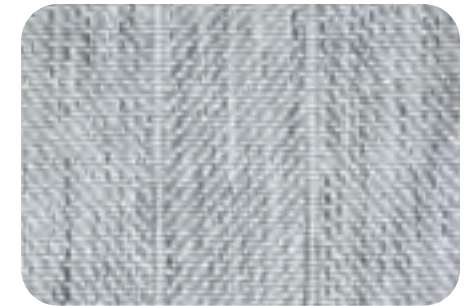
SHOWN IN SETTING - 6704/0003 PLATINUM



6704/0001 Beige



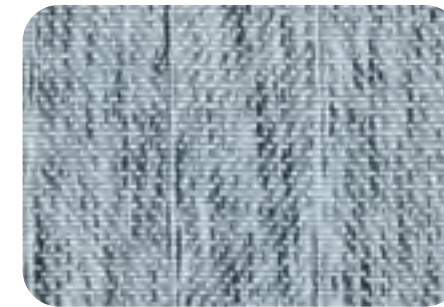
6704/0002 Charcoal



6704/0003 Platinum



6704/0004 Aqua



6704/0005 Denim



# Morgan

**FIBER**  
100% Pure Wool

**WEAVE**  
Woven Wilton Loop Pile

**WIDTH**  
13'2" (4 Meters)

**REPEAT**  
5.09" W x 6.14" L  
(Straight Match)



SHOWN IN SETTING - 2252/0003 NATURAL



2252/0001 Khaki



2252/0002 Spruce



2252/0003 Natural



2252/0004 Silver



2252/0005 Charcoal



# Nature's Path

**FIBER**  
100% Pure Wool

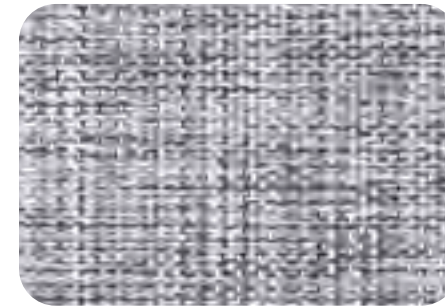
**WEAVE**  
Hand-Loomed Loop Pile

**WIDTH**  
15'

**REPEAT**  
No Repeat



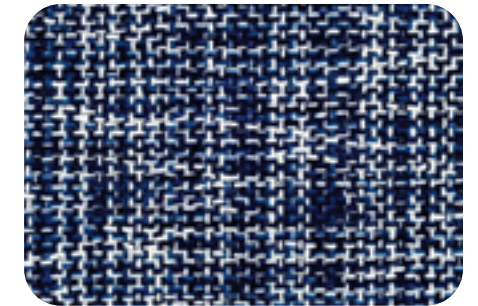
SHOWN IN SETTING - 6301/0005 SEA OATS



6301/0001 Ice Glaze



6301/0002 Coastal Breeze



6301/0003 Blue Sky



6301/0004 Sand Pearl



6301/0005 Sea Oats



# New Bern

**FIBER**  
100% ECONYL® Nylon

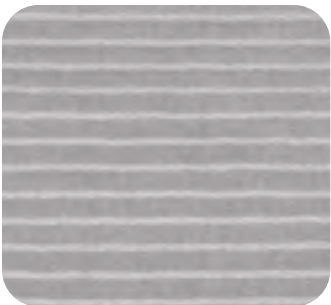
**WEAVE**  
Hand-Loomed  
Cut and Loop Pile

**WIDTH**  
15'

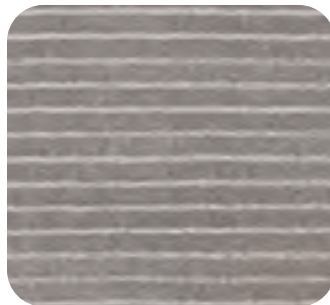
**REPEAT**  
4" Length



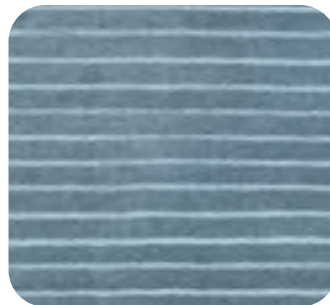
SHOWN IN SETTING - 7590/0001 SILVER



7590/0001 Silver



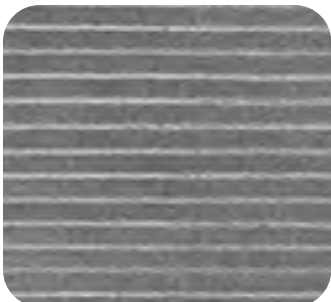
7590/0002 Steel



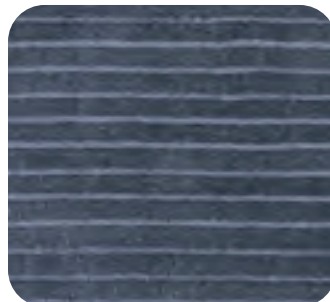
7590/0003 Teal



7590/0004 Beige



7590/0005 Gunsmoke



7590/0006 Midnight Blue



7590/0007 Cream



# Newtown Square

**FIBER**  
100% Pure Wool

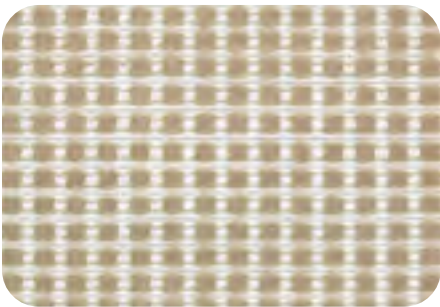
**WEAVE**  
Hand-Loomed  
Cut and Loop Pile

**WIDTH**  
15'

**REPEAT**  
1" W x 1" L  
(Straight Match)



SHOWN IN SETTING - 9450/0005 BLUE



9450/0001 Taupe



9450/0002 Beige



9450/0003 Grey



9450/0004 Ivory

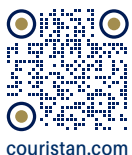


9450/0005 Blue





TWO EXECUTIVE DRIVE, FORT LEE, NEW JERSEY 07024 • 800.223.6186 • [COURISTAN.COM](http://COURISTAN.COM)  
WALL-TO-WALL CARPET • AREA RUGS • ROLL RUNNERS • CUSTOM RUGS



[couristan.com](http://couristan.com)



MAY 2023