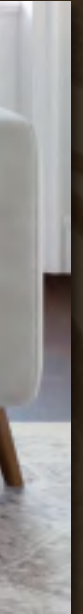
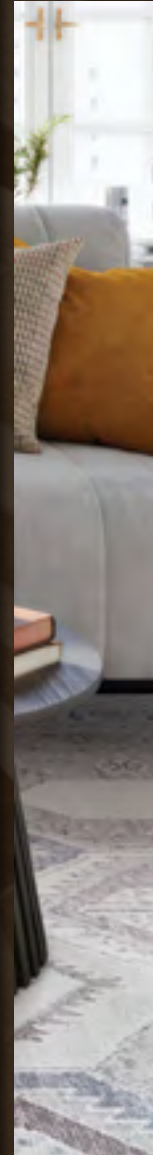


ARTISANAL

HANDMADE COLLECTIONS



COURISTAN®
Inspired by Life



ARTISANAL

HANDMADE COLLECTIONS

There is something truly magical about the journey of a handmade rug from loom to room; each piece tells its own story, vibrating with the energy of the hands that created it.

Beginning with the selection of yarns, the intricate dying processes and ultimately, the weaving, these pieces are crafted with the knowledge of age-old practices that are passed down over countless generations. Handmade rugs have always held a very special place in the fiber of Couristan’s history and we honor that history with our collection of artisan pieces.

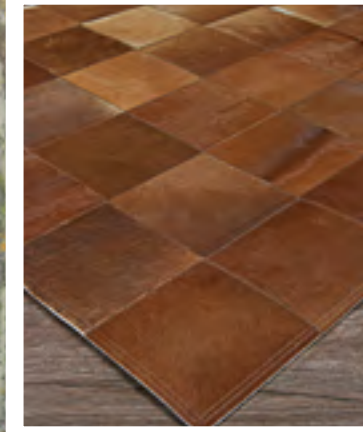
Couristan began its tradition of quality almost 100 years ago, offering hand-knotted rugs that reflected their deep history. Over the years, the assortment has moved to embrace the changing times with more selections in machine-woven and outdoor qualities; this year seemed like the perfect time to go back to our roots.

Over the last several months, we have worked hard to create a collection that is reflective of Couristan’s lineage in rugs, returning to handmade pieces that speak to it. These modern heirlooms are au courant in aesthetic with a gentle nod to the rugs that came before them. Beautiful hand-knotted designs, absent of repeats, are given new life in hues of pink, turquoise and indigo. Sustainable collections in undyed wools and chunky finishes showcase the true artistry of the weavers, highlighting that “thing” about these rugs that made us fall in love all those years ago.

Our hope is that you listen carefully to the stories that our rugs tell and give them a place to showcase their beauty.

1-4	CHALET	33-36	HUDSON
5-8	CIORA	37-40	JULIET
9-12	CIRCA	41-44	KALBARRI
13-16	COSMOROS	45-48	LOTUS
17-20	DESI	49-52	NORWAY
21-24	ELYSIAN	53-56	SIMONE
25-28	HAMADAN	57-60	UTOPIA
29-32	HANCOCK		

CHALET COLLECTION



MADE OF 100% NATURAL COWHIDE LEATHER

MATERIALS SOURCED ETHICALLY

UNIQUE MODERN STRIPE, ABSTRACT
AND GEOMETRIC DESIGNS

FELT BACKING TO ENSURE QUALITY,
DURABILITY AND LASTING BEAUTY

PILE HEIGHT: NO PILE (ANIMAL SKIN)

HAND-CRAFTED IN INDIA



* Designs 0027/0101
and 0348/1579
are available in a
18" x 18" sample.

** Custom size
area rugs may
be ordered.

This Collection is available
to Authorized Couristan
Brick-and-Mortar and
E-Commerce Dealers.

STOCKED SIZES

2' x 4'

3'4" x 5'4"

5'4" x 8'

8' x 11'4"

9'4" x 13'4"

All Sizes Are Approximate

Due to the inherent nature of this handmade product, sizes may vary slightly.

CHALET COLLECTION



0027/0101*
PLANK/GREY-IVORY



0348/1579*
TILE/BROWN



9212/0312
TESSELA/CHOCOLATE



9236/0411
FREEFORM/CAPPUCINO

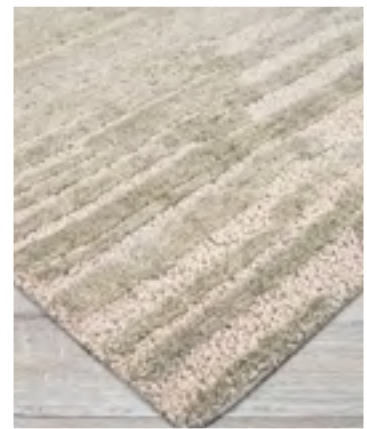


3259/0243
MEANDER/BLACK-IVORY



9274/0167
PRISM/NATURALS

CIORA COLLECTION



100% SUSTAINABLE WOOL

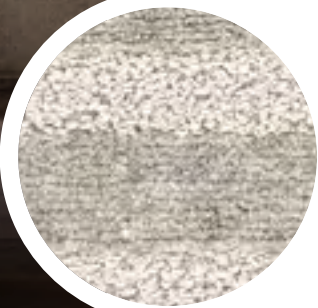
HAND-KNOTTED IN A CHUNKY CONSTRUCTION,
UTILIZING CARVED ELEMENTS FOR ADDED TEXTURE

CIORA IS THE GAELIC WORD FOR "SHEEP",
PERFECT FOR THIS COLLECTION OF KNOTTED RUGS,
AS THE BACK FEATURES A LOOPED FINISH REMINISCENT
OF SHEEP WANDERING THE IRISH COUNTRYSIDE

GEOMETRIC AND ABSTRACT DESIGNS ADORN
THESE THICKLY KNOTTED PIECES GIVING THEM A
MODERN FEEL IN AN EARTHEN COLOR PALETTE

PILE HEIGHT: UP TO 1"

HAND-KNOTTED IN INDIA



* All Designs are
available in a
18" x 18" and
24" x 36" sample.

This Collection
is Only available to
Authorized Couristan
Brick-and-Mortar
Dealers.

STOCKED SIZES

5' x 8'

8' x 10'

9' x 12'

10' x 14'

All Sizes Are Approximate

Due to the inherent nature of this handmade product, sizes may vary slightly.

CIORA COLLECTION



4162/1001
WARREN/LIGHT BEIGE



4163/2001
WAVES/SAND



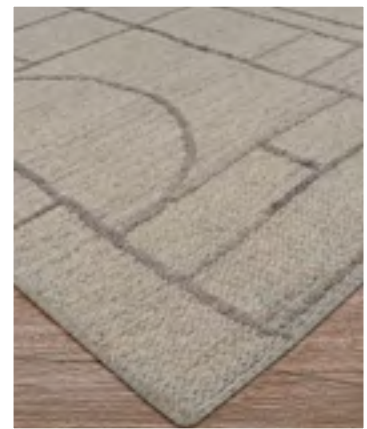
4164/4001
RHOMBUS/RAW SMOKE



4165/3001
DUNES/WHEAT



CIRCA COLLECTION



HAND-TUFTED OF 100% WOOL

OVERSIZED GEOMETRIC AND LINEAR MOTIFS
GIVE THE WEAVE A MODERN EDGE

HANDMADE TO MIMIC THE DELICATE HAND-KNOTTED
WEAVE FOUND IN VINTAGE RUGS, THIS GROUP COMBINES
A HORIZONTAL SOUMAK TUFT WITH RAISED CUT-PILE TOUCHES

PILE HEIGHT: .393"

HAND-TUFTED IN INDIA



STOCKED SIZES

5' x 8'

8' x 10'

9' x 12'

All Sizes Are Approximate

Due to the inherent nature of this handmade product, sizes may vary slightly.

* All Designs are
available in a
18" x 18" and
24" x 36" sample.

This Collection is available
to Authorized Couristan
Brick-and-Mortar and
E-Commerce Dealers.

CIRCA COLLECTION



7216/2002
FOUNDRY/WHEAT



7217/0101
CODRUS/IVORY



7218/1301
HARROW/SILVER



7219/2001
DOURIS/SAND



COSMOROS COLLECTION



HAND-WOVEN OF 100% JUTE WITH FRINGED EDGES

ETHNIC-INSPIRED ABSTRACT DESIGNS BOLDLY
HIGHLIGHT THE NATURAL FIBERS OF THIS COLLECTION,
GIVING THEM AN ORGANIC FEEL

A NATURAL COLOR PALETTE ALLOWS FOR EASE OF
DESIGN OPTIONS, WORKING WELL IN ECLECTIC, MODERN
AND TRANSITIONAL ENVIRONMENTS

NOT INTENDED FOR OUTDOOR USE

PILE HEIGHT: ZERO PILE

HAND-WOVEN IN INDIA



STOCKED SIZES
(WITH FRINGE)

6' x 9'

8' x 10'

All Sizes Are Approximate

Due to the inherent nature of this handmade product, sizes may vary slightly.

This Collection is available
to Authorized Couristan
Brick-and-Mortar and
E-Commerce Dealers.

COSMOROS COLLECTION



5416/1601
HAMAR/BLACK



5417/1401
ASANTE/NATURAL



5419/1401
HIMBA/NATURAL



5420/1501
KARO/NATURAL-BLACK



5418/1601
YORUBA/BLACK



DESI COLLECTION



HAND-KNOTTED OF 100% WOOL WITH
SHORT-FRINGED EDGES

DESI IS A CARNIVAL OF COLOR THAT STRIKES YOUR SENSES
WITH ITS BALANCE OF IN-YOUR-FACE BOLD HUES
AND BLENDED TONAL VIBES

TAKING BEAUTIFUL IKAT, HERIZ AND OTHER TRADITIONAL MOTIFS,
BUT WITH A TWIST, CREATING OVERSIZED ELEMENTS AND
INFUSING THEM WITH RICH, ON-TREND COLOR,
CREATING MODERN HEIRLOOMS

PILE HEIGHT: .196" • HAND-KNOTTED IN INDIA



* All Designs are
available in a
18"x18" and
24"x36" sample.

This Collection
is Only available to
Authorized Couristan
Brick-and-Mortar
Dealers.

STOCKED SIZES
(WITH FRINGE)

6' x 9'

8' x 10'

9' x 12'

10' x 14'

All Sizes Are Approximate

Due to the inherent nature of this handmade product, sizes may vary slightly.

DESI COLLECTION



DES1/1001
JODHPUR/SAND



DES2/2002
MUGHAL/SUNRISE



DES4/4004
UDAIPUR/RUST



DES5/2202
ODISHA/SUNSET



DES3/3003
MAHAL/NATURAL-BLUE



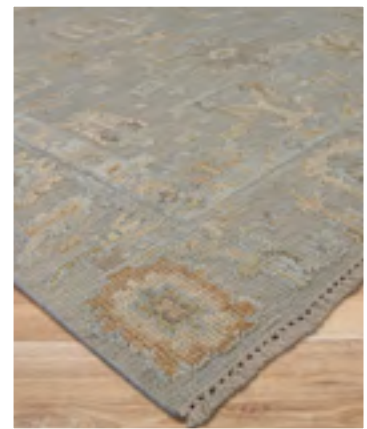
DES6/5005
MADURAI/TURQUOISE

ELYSIAN COLLECTION



* All Designs are available in a 18" x 18" and 24" x 36" sample.

This Collection is Only available to Authorized Couristan Brick-and-Mortar Dealers.



HAND-KNOTTED OF 100% WOOL WITH FRINGED EDGES

A FRESH APPROACH TO TRADITIONAL MOTIFS, ELYSIAN IS A UNIQUE COLLECTION OF HANDMADE RUGS WOVEN IN A BEAUTIFUL HIGH/LOW CONSTRUCTION

UTILIZING AN OUSHAK WEAVE, EACH PIECE FEATURES RAISED ELEMENTS TO ENHANCE THE DESIGN GIVING THEM TEXTURE AND INTEREST

DESIGNS ARE WITHOUT REPEAT ALLOWING FOR A BOLD STATEMENT IN ANY ROOM IN WHICH THEY ARE PLACED

WORKS EFFORTLESSLY IN TRADITIONAL, TRANSITIONAL, CONTEMPORARY AND ECLECTIC ENVIRONMENTS

PILE HEIGHT: .078"

HAND - KNOTTED IN INDIA



STOCKED SIZES (WITH FRINGE)

5'6" x 8'6"

7'6" x 9'6"

8'6" x 11'6"

9'6" x 13'6"

All Sizes Are Approximate

Due to the inherent nature of this handmade product, sizes may vary slightly.

ELYSIAN COLLECTION



EL01/1006
ATHENA/STORM GREY



EL01/2002
ATHENA/SUNRISE



EL02/3001
POSEIDON/GRANITE-MULTI



HAMADAN COLLECTION



HAND-KNOTTED OF 100% WOOL WITH
SHORT-FRINGED EDGES

LIKE ITS BEAUTIFUL NAMESAKE, HAMADAN IS A COLLECTION
ROOTED IN HISTORY WITH A TOUCH OF MODERNITY

HAND-KNOTTED KAZAK DESIGNS ARE GIVEN A MODERN
FEEL IN TONAL ELEMENTS OF GREY, BLUE AND EARTHEN HUES,
ALLOWING FOR LOOKS THAT WORK IN THE MOST ECLECTIC
OF AESTHETICS

UTILIZES AN OUSHAK WEAVE THAT ALLOWS FOR A
LOOSE KNOT AND A MORE LAIDBACK FEEL

PILE HEIGHT: .039"

HAND-KNOTTED IN INDIA



* All Designs are
available in a
18" x 18" and
24" x 36" sample.

This Collection
is Only available to
Authorized Couristan
Brick-and-Mortar
Dealers.

STOCKED SIZES (WITH FRINGE)

6' x 9'

8' x 10'

9' x 12'

10' x 14'

All Sizes Are Approximate

Due to the inherent nature of this handmade product, sizes may vary slightly.

HAMADAN COLLECTION



6122/1001
OMAN/IVORY



6123/2012
BALEARIC/SILVER-MULTI



6124/3111
TASMAN/CAMEL



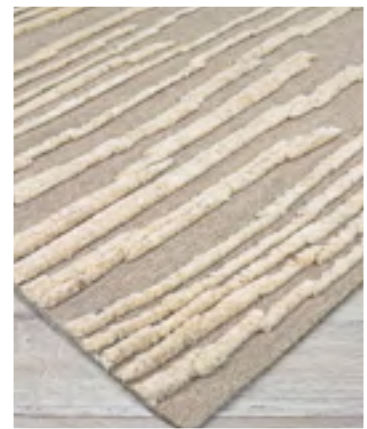
6125/2001
KARA/SILVER



6124/3001
TASMAN/BROWN



HANCOCK COLLECTION



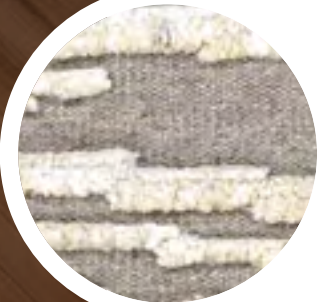
HAND-KNOTTED OF 100% SUSTAINABLE WOOL

KNOTTED IN A LOOSE CONSTRUCTION AND FEATURING A CUT-PILE FINISH THAT ADDS HIGH/LOW TEXTURAL ELEMENTS TO EACH GEOMETRIC AND TRANSITIONAL MOTIF

CASUAL FEEL IN A HAND-KNOTTED TECHNIQUE ALLOWS THESE PIECES TO WORK IN MULTIPLE ENVIRONMENTS

PILE HEIGHT: .511"

HAND-KNOTTED IN INDIA



STOCKED SIZES

5'6" x 8'6"

7'6" x 9'6"

9' x 12'

10'6" x 13'6"

All Sizes Are Approximate

Due to the inherent nature of this handmade product, sizes may vary slightly.

* All Designs are available in a 18"x18" and 24"x36" sample.

This Collection is Only available to Authorized Couristan Brick-and-Mortar Dealers.

HANCOCK COLLECTION



5904/1801
ALTAI/NATURAL



5905/3012
ATLAS/GREY



5906/6402
BROOKS/MOCHA



5907/0001
CARPATHIAN/CHARCOAL



HUDSON COLLECTION



* All Designs are available in a 18"x18" and 24"x36" sample.

This Collection is Only available to Authorized Couristan Brick-and-Mortar Dealers.



HAND-KNOTTED OF 100% WOOL
WITH FRINGED EDGES

A UNIQUE COLOR PALETTE ENHANCES THE
CONTEMPORARY FEEL OF THESE PIECES, UTILIZING SPACE-DYED
YARNS IN INTERESTING BLENDS OF HUES

WITH A NOD TO OUR NEW YORK ROOTS, HUDSON IS A
SOPHISTICATED COLLECTION OF HAND-KNOTTED DESIGNS
IN A CASUAL 3/20 QUALITY

INFLUENCED BY ARCHITECTURAL DETAILS, DESIGNS
ARE LINEAR YET ABSTRACT

PILE HEIGHT: .236" • HAND-KNOTTED IN INDIA



STOCKED SIZES
(WITH FRINGE)

6' x 9'

8' x 10'

9' x 12'

10' x 14'

All Sizes Are Approximate

Due to the inherent nature of this handmade product, sizes may vary slightly.

HUDSON COLLECTION



3500/0602
MIDTOWN/OLIVE



3501/1306
MURRAY HILL/PLUM



3502/1302
FULTON/ICE BLUE



3503/1401
METRO/GOLD



JULIET COLLECTION



HAND-TUFTED OF 100% WOOL

THIS COLLECTION UTILIZES A LOOPED FINISH, GIVING EACH PIECE A BEAUTIFUL TEXTURAL ELEMENT; SPACE-DYED YARNS ARE USED TO ADD DEPTH

TONAL DESIGNS IN TRADITIONAL PATTERNS ALLOW THESE RUGS TO WORK IN EVERYTHING FROM A BOHEMIAN TO A TRADITIONAL ROOM

INSPIRED BY KERMAN, HERIZ AND MALAYER MOTIFS, THESE PIECES ARE MODERN INTERPRETATIONS OF CENTURIES-OLD DESIGN AESTHETICS

PILE HEIGHT: .393"

HAND-TUFTED IN INDIA



STOCKED SIZES

5' x 8'

8' x 10'

9' x 12'

10' x 14'

All Sizes Are Approximate

Due to the inherent nature of this handmade product, sizes may vary slightly.

* All Designs are available in a 18" x 18" sample.

This Collection is Only available to Authorized Couristan Brick-and-Mortar Dealers.

JULIET COLLECTION



6927/2771
ROSALINE/LIMESTONE



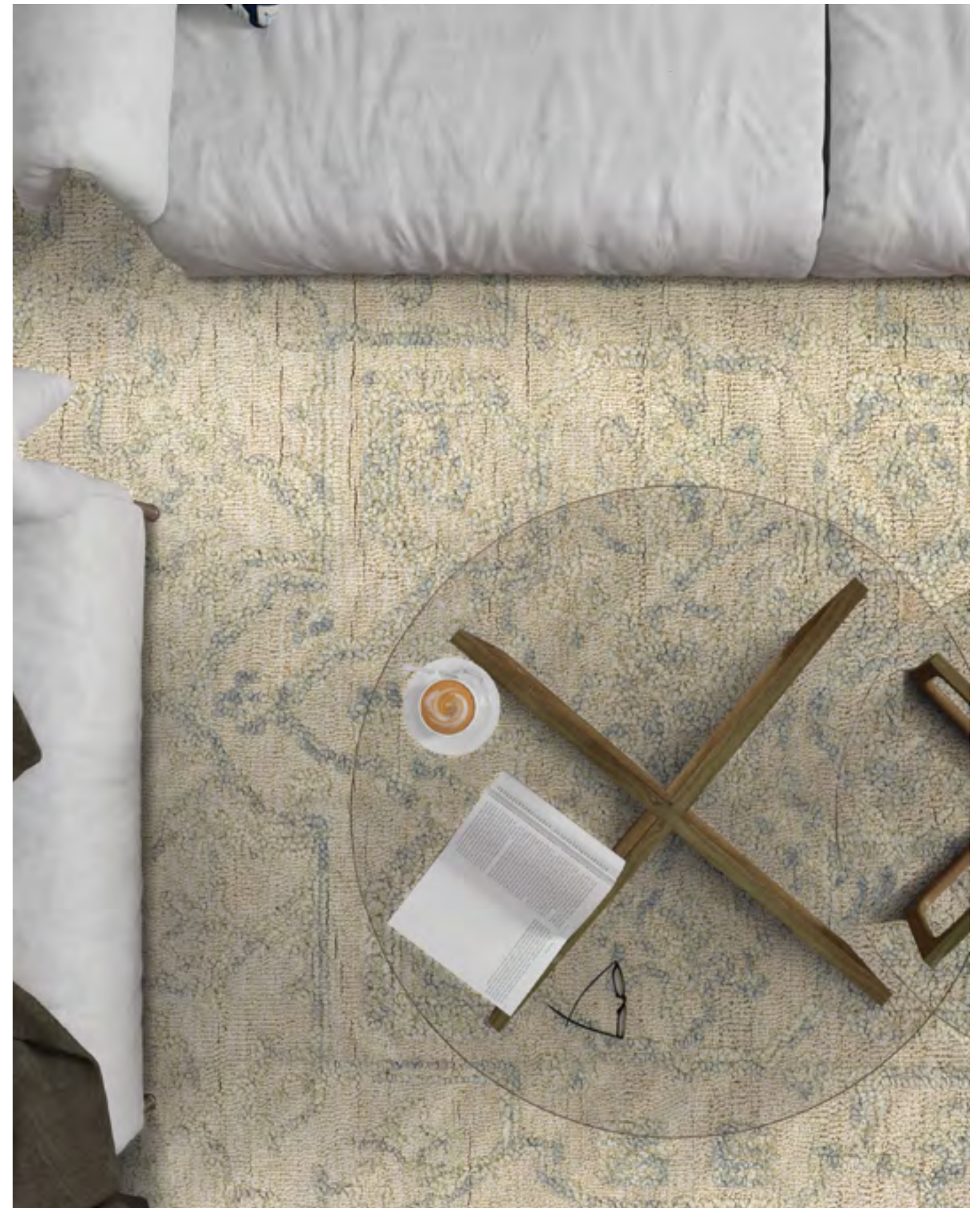
6927/2882
ROSALINE/WHEAT



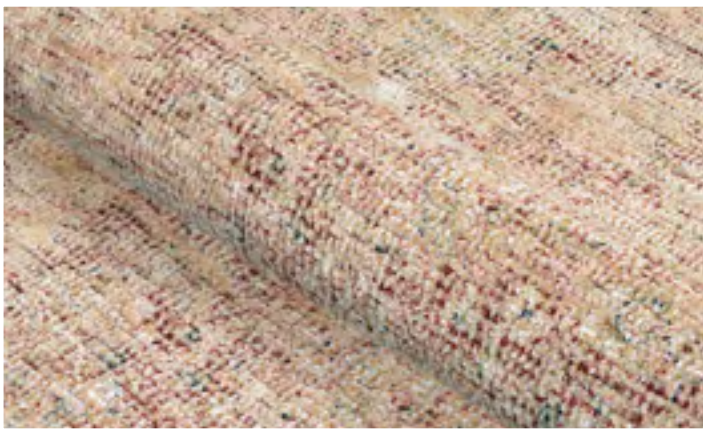
6927/3222
ROSALINE/FOG GREY



6927/4134
ROSALINE/SEAFOAM



KALBARRI COLLECTION



HAND-WOVEN BASE OF THE SOFTEST BLEND OF
COTTON/POLYESTER/RAYON/WOOL

48% COTTON / 33% POLYESTER / 11% RAYON / 8% WOOL

A UNIQUE COLLECTION OF DIGITALLY PRINTED PIECES
DESIGNED TO EMULATE THE LOOK OF HIGHER-END ANTIQUE,
HAND-KNOTTED RUGS

TRADITIONAL DESIGNS WITH A MODERN TWIST,
THESE RUGS FEATURE BEAUTIFUL PERSIAN-INSPIRED MOTIFS
IN FASHION-FORWARD COLOR PALETTES

FRINGED EDGES • PILE HEIGHT: NO PILE (FLAT WEAVE)

HAND-WOVEN IN INDIA



* All Designs are
available in a
18" x 18" and
24" x 36" sample.

This Collection
is Only available to
Authorized Couristan
Brick-and-Mortar
Dealers.

STOCKED SIZES (WITH FRINGE)

5' x 8'

8' x 10'

9' x 12'

10' x 14'

All Sizes Are Approximate

Due to the inherent nature of this handmade product, sizes may vary slightly.

KALBARRI COLLECTION



4771/3661
LEYLAN/AMBER-MULTI



4772/5001
DEZ/TURQUOISE-MULTI



4774/5011
FARAH/LAPIS-MULTI



4775/3652
ROXANA/RUBY-MULTI



4773/3526
TAJAN/GARNET-MULTI



LOTUS COLLECTION



HAND-TUFTED OF 100% HAND-SPUN NEW ZEALAND WOOL

OVERSIZED BLOCK PATTERNS ARE ENHANCED IN AN OVER-TUFTED CONSTRUCTION THAT LENDS TEXTURE AND MAKES A BOLD STATEMENT IN ANY ENVIRONMENT

EARTH TONES GIVE THESE DESIGNS THEIR GROUNDED FEEL, ALLOWING FOR EFFORTLESS PLACEMENT

YARNS ARE SUBTLY SPACE-DYED GIVING THE COLORS SLIGHT VARIATIONS

PILE HEIGHT: .590"

HAND-TUFTED IN INDIA

* All Designs are available in a 18" x 18" and 24" x 36" sample.

This Collection is Only available to Authorized Couristan Brick-and-Mortar Dealers.



STOCKED SIZES

5' x 8'

8' x 10'

9' x 12'

All Sizes Are Approximate

Due to the inherent nature of this handmade product, sizes may vary slightly.

LOTUS COLLECTION



8221/2011
ENLIGHTENMENT/OBSIDIAN



8221/3123
ENLIGHTENMENT/DRIFTWOOD



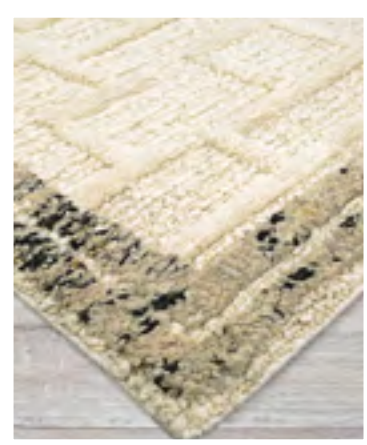
8222/3303
PRECIPICE/STONE



8223/3864
PAGODA/EARTH



NORWAY COLLECTION



HAND-KNOTTED OF 100% SUSTAINABLE
UNDYED NATURAL WOOL

KNOTTED IN A LARGER-KNOT CONSTRUCTION WITH
EACH PIECE FEATURING A HIGH/LOW APPEARANCE,
UNIQUE TEXTURAL ELEMENTS AND A NUBBY FINISH
FOR ADDED DEPTH AND DIMENSION

MINIMALIST DESIGNS ARE CREATED IN A
TONE-ON-TONE PALETTE, ALLOWING THE BEAUTY OF
THESE HANDMADE PIECES TO SHINE THROUGH

PILE HEIGHT: UP TO .5"

HAND-KNOTTED IN INDIA



* All Designs are
available in a
18"x18" sample.

This Collection
is Only available to
Authorized Couristan
Brick-and-Mortar
Dealers.

STOCKED SIZES

5'6" x 8'6"

7'6" x 9'6"

8'6" x 11'6"

9'6" x 12'6"

All Sizes Are Approximate

Due to the inherent nature of this handmade product, sizes may vary slightly.

NORWAY COLLECTION



6320/8001
ISTRA/NORDIC WHITE



6321/2822
BASTION/OATMEAL



6323/2822
STAVERN/OATMEAL



6324/2822
YARROW/OATMEAL



6322/8001
SONJA/NORDIC WHITE



SIMONE COLLECTION



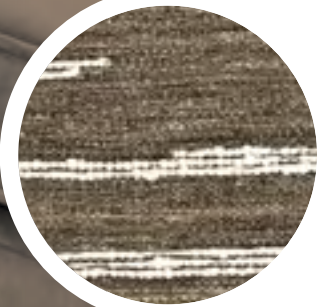
HAND-WOVEN OF 100% WOOL

WOVEN USING A DHURRIE CONSTRUCTION, THESE AREA RUGS WERE DESIGNED TO EMULATE A KILIM WEAVE WITH A CASUAL FEEL

DESIGNS ARE SIMPLE LINEAR AND ABSTRACT PATTERNS, HIGHLIGHTING THE BEAUTY OF THE WEAVE

PILE HEIGHT: ZERO PILE

HAND-WOVEN IN INDIA



* All Designs are available in a 18" x 18" and 24" x 36" sample.

This Collection is Only available to Authorized Couristan Brick-and-Mortar Dealers.

STOCKED SIZES

5' x 8'

8' x 10'

9' x 12'

10' x 14'

All Sizes Are Approximate

Due to the inherent nature of this handmade product, sizes may vary slightly.

SIMONE COLLECTION



6114/2031
KARINA/CHOCOLATE



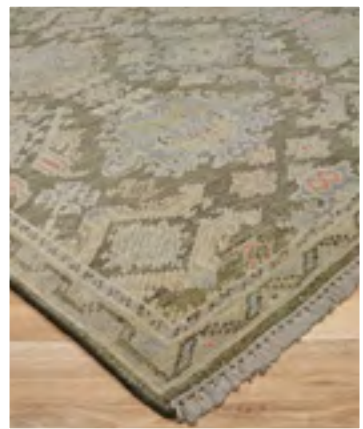
6115/2564
LYRA/CREAM-MOCHA



6116/6402
VELA/MOCHA



UTOPIA COLLECTION



HAND-KNOTTED OF 100% WOOL WITH FRINGED EDGES

INSPIRED BY THE CENTURIES-OLD DESIGNS THAT CAME BEFORE THEM, UTOPIA IS AN ODE TO YESTERDAY WITH A NOD TO TODAY

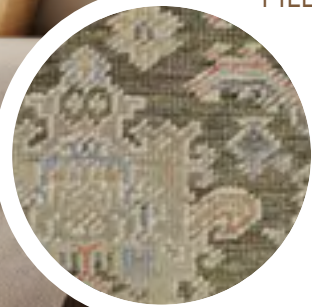
TRADITIONAL DESIGNS ARE GIVEN A MODERN TWIST IN COLORS THAT ECHO OF-THE-MOMENT AESTHETICS IN RICH PINKS, TURQUOISE, GOLD AND GREEN

MOTIFS ARE ROOTED IN HISTORY, BUT ARE OVERSIZED AND WITHOUT REPEAT, LENDING A PUNK EDGE TO EACH

PILE HEIGHT: .078" • HAND - KNOTTED IN INDIA

* All Designs are available in a 18" x 18" and 24" x 36" sample.

This Collection is Only available to Authorized Couristan Brick-and-Mortar Dealers.



STOCKED SIZES (WITH FRINGE)

5'6" x 8'6"

7'6" x 9'6"

8'6" x 11'6"

9'6" x 13'6"

All Sizes Are Approximate

Due to the inherent nature of this handmade product, sizes may vary slightly.

UTOPIA COLLECTION



UT01/1003
JUNO/SILVER MULTI



UT02/3001
VESTA/NAVY



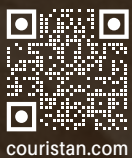
UT02/4002
VESTA/OLIVE





TWO EXECUTIVE DRIVE, FORT LEE, NEW JERSEY 07024 • 800.223.6186 • COURISTAN.COM

Wall-To-Wall Carpet • Area Rugs • Roll Runners • Custom Rugs



couristan.com

MAY 2025