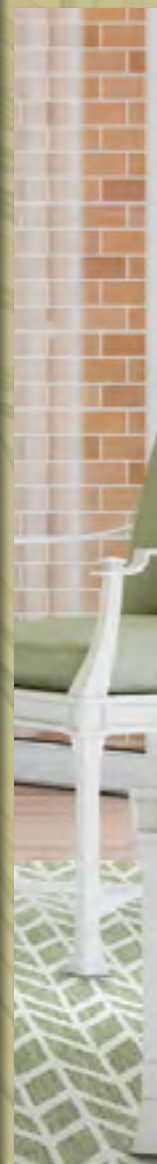


# ELEMENTAL

OUTDOOR/INDOOR COLLECTIONS  
PLACE THEM ANYWHERE AND EVERYWHERE



COURISTAN®  
*Inspired by Life*





# ELEMENTAL

OUTDOOR/INDOOR COLLECTIONS  
PLACE THEM ANYWHERE AND EVERYWHERE

Elemental by definition is “related to or embodying the powers of nature.” Our collection of outdoor/indoor, anywhere/everywhere rugs are the truest embodiment of powerful; all are tested for mildew and fade resistance and work just as effectively indoors in your highest traffic areas as they do outdoors.

Couristan has been a leader in the outdoor rug category for over 20 years, pioneering the concept of using polypropylene in both the warp and the weft of the rugs to guarantee year-round enjoyment. We began our offering with our Recife Collection and have continued to honor that tradition, by adding trend-forward constructions and designs to make your outdoor space an extension of your indoors.

We are proud of our place in this journey and glad that you have decided to join us outdoors.

- 1-4 ASCOT
- 5-8 CAPE
- 9-14 CASTILLE
- 15-18 CHARM
- 19-24 COVINGTON
- 25-36 DOLCE
- 37-40 FEZ
- 41-44 JOSHUA
- 45-48 LIGURIA
- 49-56 MONACO
- 57-60 MONTE CARLO
- 61-64 NATURALISTIC™
- 65-68 PALO SANTO
- 69-80 RECIFE



# ASCOT COLLECTION



HAND-WOVEN OF 100% PET  
(HIGH CONTENT RECYCLED MATERIALS USED)

INFLUENCED BY MENSWEAR TEXTILES, ASCOT IS A SIMPLE  
GROUP OF HANDMADE ANYWHERE/EVERYWHERE RUGS

TONAL OVERSIZED WINDOWPANE MOTIFS GIVE  
EACH PIECE TEXTURE; SPACE-DYED YARNS GROUNDS THEM

SELF-FRINGED EDGES ENHANCE THE SIMPLICITY  
OF THESE PIECES THAT FEATURE COLORS THAT  
ECHO THE OUTDOORS

MOLD/MILDEW/WATER RESISTANT;  
UV STABILIZED

PILE HEIGHT: NO PILE (FLAT WEAVE)

HAND-WOVEN IN INDIA

\* All Designs are  
available in a  
18" x 18" and  
24" x 36" sample.

This Collection  
is Only available to  
Authorized Couristan  
Brick-and-Mortar  
Dealers.

## STOCKED SIZES

5' x 8'

8' x 10'

9' x 12'

*All Sizes Are Approximate*

*Due to the inherent nature of this handmade product, sizes may vary slightly.*



ASCOT COLLECTION



5415/1101  
WINDOWPANE/LINEN



5415/2002  
WINDOWPANE/ROSE



5415/4402  
WINDOWPANE/TWEED



5415/6006  
WINDOWPANE/CELADON



5415/3301  
WINDOWPANE/GREY





CAPE COLLECTION



100% FIBER-ENHANCED COURTRON™ POLYPROPYLENE

HIGH/LOW STRUCTURED WEAVE

PROVIDES DURABLE PERFORMANCE IN HIGH-TRAFFIC  
AREAS INSIDE AND OUTSIDE THE HOME

MOLD/MILDEW/WATER RESISTANT; UV STABILIZED

PET-FRIENDLY • PILE HEIGHT: NO PILE (FLAT WEAVE)

MADE IN BELGIUM



STOCKED SIZES

2' x 3'7"

3'11" x 5'6"

5'3" x 7'6"

6'6" x 9'6"

7'10" x 10'9"

2'3" x 7'10" & 2'3" x 11'9" Runner

*All Sizes Are Approximate*

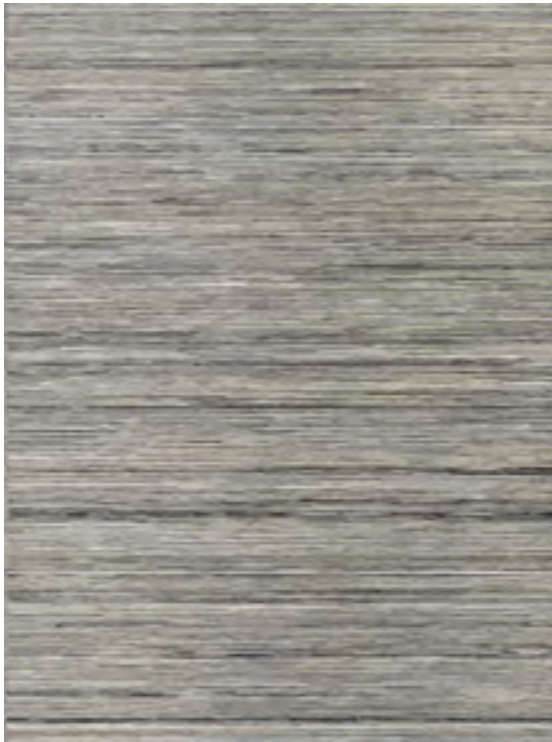
This Collection is available  
to Authorized Couristan  
Brick-and-Mortar and  
E-Commerce Dealers.



CAPE COLLECTION



1403/0002  
BROCKTON/COBALT-TEAL



1407/0009  
HINSDALE/LIGHT BROWN-SILVER



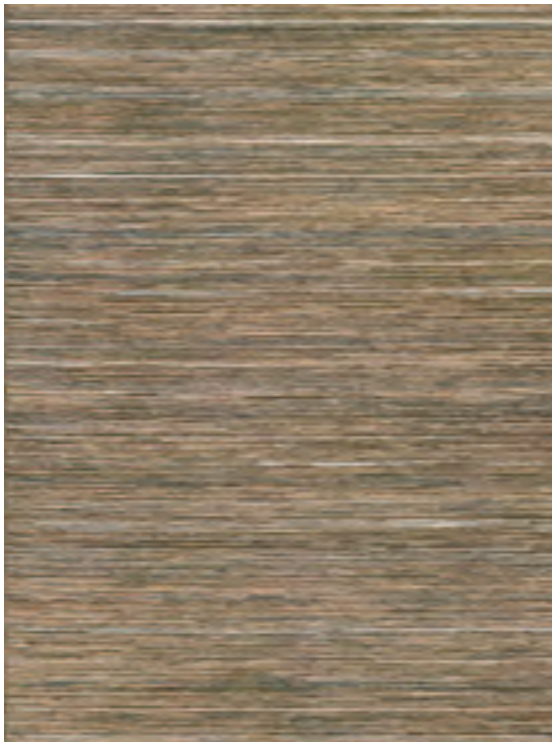
1407/0066  
HINSDALE/CRIMSON-MULTI



9835/5034  
GABLES/SURF



1407/0020  
HINSDALE/TEAL-COBALT



1407/0029  
HINSDALE/BROWN-IVORY



9860/9006  
FAYSTON/MULTI



CASTILLE COLLECTION



MACHINE-WOVEN OF A BLEND OF BOTH OUTDOOR-USE  
POLYESTER AND POLY-CHENILLE

CHENILLE ACCENTS ADD TEXTURE AND INTEREST

CONSTRUCTED ON A TAPESTRY MACHINE FOR A UNIQUE FINISH

TRANSITIONAL, CONTEMPORARY AND BOTANICAL DESIGNS LEND  
THEMSELVES TO MULTIPLE ENVIRONMENTS, BOTH INDOORS AND OUT

MOLD/MILDEW/WATER RESISTANT; UV STABILIZED

PET-FRIENDLY • PILE HEIGHT: NO PILE (FLAT WEAVE)

MADE IN BELGIUM

STOCKED SIZES

5'3" x 7'6"

8'1" x 11'2"

9'8" x 13'6"

*All Sizes Are Approximate*

\* All Designs are  
available in a  
18"x18" sample.

This Collection is available  
to Authorized Couristan  
Brick-and-Mortar and  
E-Commerce Dealers.



# CASTILLE COLLECTION



2912/1201  
GRAFFITI/BLACK-WHITE



2913/1444  
PALMA/ROUGE



2918/1315  
FIORE/TEA LEAF



2918/2703  
FIORE/TERRA-COTTA



2913/3301  
PALMA/FERN



2913/4111  
PALMA/PETROL



2918/4111  
FIORE/PETROL



2918/6025  
FIORE/MOCHA



# CASTILLE COLLECTION



2949/1315  
CANVAS/TEA LEAF



2949/3001  
CANVAS/GLACIER



2949/3522  
CANVAS/ORION





## CHARM COLLECTION



\* All Designs are  
available in a  
18"x18" sample.

This Collection is available  
to Authorized Couristan  
Brick-and-Mortar and  
E-Commerce Dealers.

100% SPACE-DYED HEAT-SET COURTRON™ POLYPROPYLENE

FEATURING SOPHISTICATED MOTIFS

STRUCTURED FLATWOVEN CONSTRUCTION

SUITABLE FOR OUTDOOR/INDOOR USE

MOLD/MILDEW/WATER RESISTANT; UV STABILIZED

PET-FRIENDLY

PILE HEIGHT: NO PILE (FLAT WEAVE)

MADE IN TURKEY

### STOCKED SIZES

2'2" x 4'3"

3'3" x 5'6"

5'3" x 7'6"

6'6" x 9'6"

7'10" x 10'9"

2'2" x 7'6" Runner

### SPECIAL SHAPES

\*6'6" & 7'10" Round

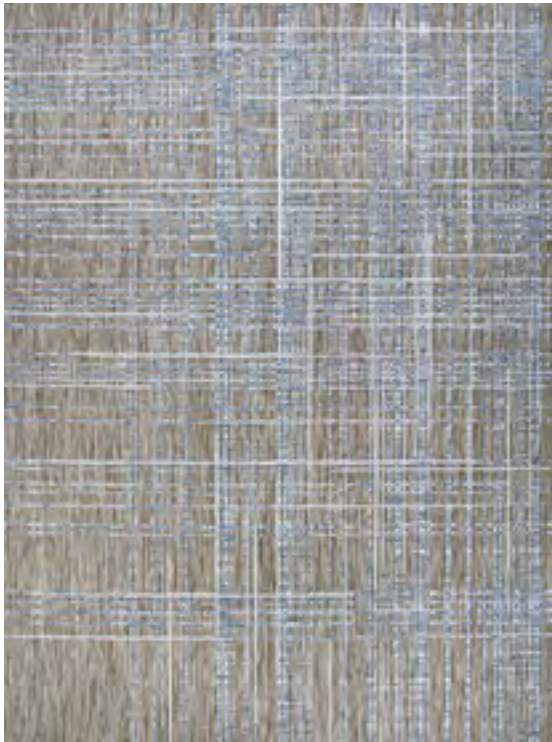
*All Sizes Are Approximate*



CHARM COLLECTION



2552/2082\*  
WOODBURN/IVORY-SAND



2553/2091\*  
OHE/SAND-IVORY



2559/2007  
TIVERTON/SAND-IVORY



2559/2009  
TIVERTON/ANTHRACITE-LIGHT GREY



2554/2009\*  
BOTANICAL/ASH



2556/2091  
YUKON/TWIG



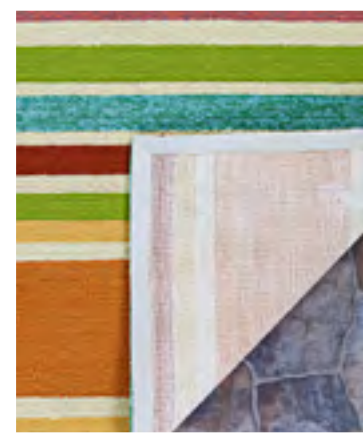
2640/0910  
KIMBERLY/NATURALS



2663/0125  
THICKET/TWIG



## COVINGTON COLLECTION



100% FIBER-ENHANCED COURTRON™ POLYPROPYLENE

EXQUISITE HAND-HOOKED CONSTRUCTION

PROVIDES DURABLE PERFORMANCE IN FREQUENTLY  
USED SPACES INSIDE AND OUTSIDE THE HOME

MOLD/MILDEW/WATER RESISTANT; UV STABILIZED

APPROXIMATE PILE HEIGHT: .25"

HAND-HOOKED IN CHINA

### STOCKED SIZES

2' x 4'

\*2' x 6'

3'6" x 5'6"

5'6" x 8'

8' x 11'

2'6" x 8'6" Runner

### SPECIAL SHAPES

7'10" Round

*All Sizes Are Approximate*

\* Please Note:  
4361/0366, 4361/0671,  
4886/4285 are also  
available in 2'x6'.

This Collection is available  
to Authorized Couristan  
Brick-and-Mortar and  
E-Commerce Dealers.



# COVINGTON COLLECTION



2128/1009  
SANDALS/SAND-MULTI



2129/1021  
TROPICS GARDEN/SAND-MULTI



2263/0702  
DELFINA/AZURE-LEMON



2296/3067  
SHERBERT STRIPE/MULTI





# COVINGTON COLLECTION



4092/0409  
SEA WATER/OCEAN-AQUA



4098/4071  
PAINTED FERN/FERN-RED



4886/4285\*  
TROPICAL ORCHID/AZURE-FOREST GREEN-RED



5356/3561  
SUMMER LAELIA/IVORY-FERN



4361/0366\*  
ARECA PALMS/BROWN-FOREST GREEN

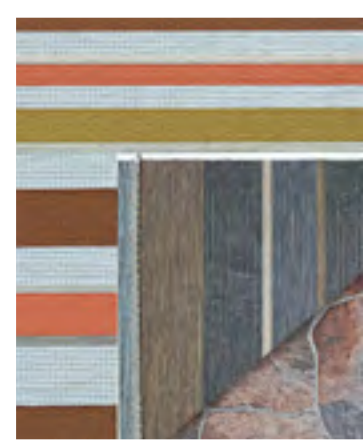
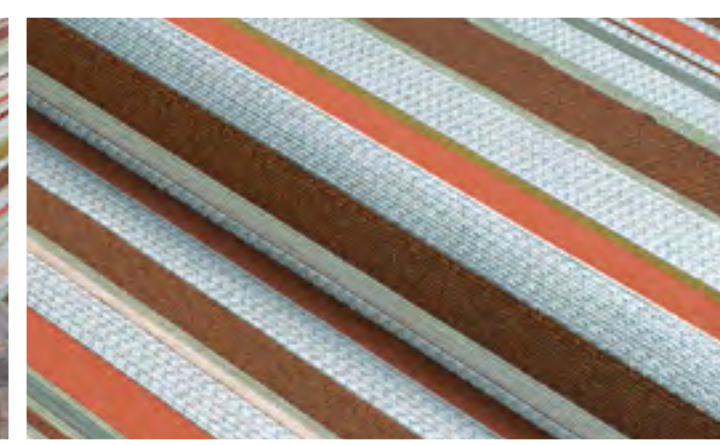


4361/0671\*  
ARECA PALMS/AZURE-FOREST GREEN





## DOLCE COLLECTION



100% FIBER-ENHANCED COURTRON™ POLYPROPYLENE  
WITH DURABLE POLYESTER

FEATURING A STRUCTURED TAPESTRY CONSTRUCTION

SUITABLE FOR OUTDOOR/INDOOR USE

MOLD/MILDEW/WATER RESISTANT; UV STABILIZED

PET-FRIENDLY • PILE HEIGHT: NO PILE (FLAT WEAVE)

MADE IN BELGIUM

### STOCKED SIZES

2'3" x 3'11"

4' x 5'10"

5'3" x 7'6"

8'1" x 11'2"

8'6" x 13'

2'3" x 7'10" Runner

*All Sizes Are Approximate*

\* Design 7517/0001  
is available in a  
18" x 18" sample.

This Collection is available  
to Authorized Couristan  
Brick-and-Mortar and  
E-Commerce Dealers.



DOLCE COLLECTION



4039/0760  
AMALFI/MULTI  
*Available in 8'6" x 13'.*



4055/0234  
NOVELLA/GREY  
*Available in 8'6" x 13'.*



5582/0582  
MALA/SMOKE  
*Available in 8'6" x 13'.*



5583/7439  
FLORAL VINES/BEIGE-MULTI



4078/7439  
TIVOLI/IVORY-MULTI  
*Available in 8'6" x 13'.*



5750/0003  
AMUR LEOPARD/NEW GOLD



5755/0002  
BENGAL/IVORY



# DOLCE COLLECTION



5866/0866  
BLUE NILE/INDIGO  
*Available in 8'6" x 13'.*



7460/0007  
FLOWERING FERN/IVORY-HUNTER GREEN  
*Available in 8'6" x 13'.*



7506/0004  
PALM LILY/HUNTER GREEN-IVORY  
*Available in 8'6" x 13'.*



7508/0020  
BAMBOO FOREST/FROST





# DOLCE COLLECTION



7512/0045  
SUMMER IVY/IVORY-OLIVE



7512/0845  
SUMMER IVY/IVORY-SLATE BLUE



7512/1345  
SUMMER IVY/IVORY-TERRA-COTTA





# DOLCE COLLECTION



7515/1103  
PARQUET/MOCHA



7515/2102  
PARQUET/CHARCOAL



7515/4104  
PARQUET/AMBER  
*Not available in a runner.*



7515/5105  
PARQUET/INK  
*Not available in a runner.*



7515/3103  
PARQUET/FERN  
*Not available in a runner.*





DOLCE COLLECTION



7517/0001\*  
FLORA/SNOW



7517/2102  
FLORA/NERO



7518/3303  
STRIPED/GRASS



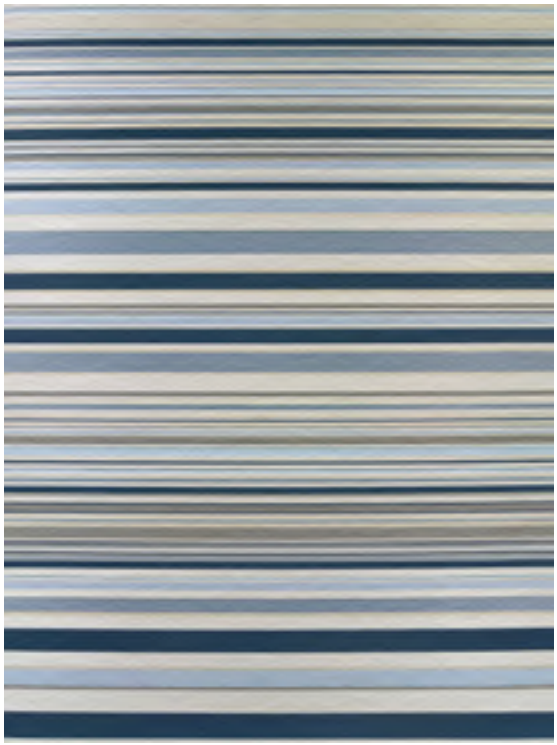
7518/4404  
STRIPED/SUNSET



7517/5001  
FLORA/ARGENTO



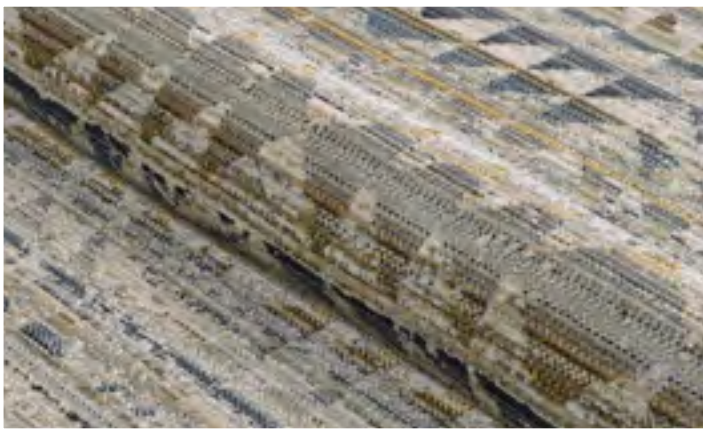
7517/5202  
FLORA/ICE



7518/5505  
STRIPED/NAUTICAL



FEZ COLLECTION



MACHINE-WOVEN OF THE SOFTEST 100% POLYESTER, THESE RUGS ARE INSPIRED BY TURKISH ANTIQUES

TRANSITIONAL AND SOFT CONTEMPORARY DESIGNS GIVE THESE ANYWHERE/EVERYWHERE RUGS THE ABILITY TO TOGGLE EFFORTLESSLY FROM INDOORS TO OUT

A WARM, EARTHY PALETTE ALLOWS THESE PIECES TO WORK IN ANY ENVIRONMENT FROM TRANSITIONAL TO TRADITIONAL TO CONTEMPORARY AND EVERYTHING IN BETWEEN

MOLD/MILDEW/WATER RESISTANT; UV STABILIZED

PILE HEIGHT: NO PILE (FLAT WEAVE)

MADE IN TURKEY

STOCKED SIZES

5' x 7'10"

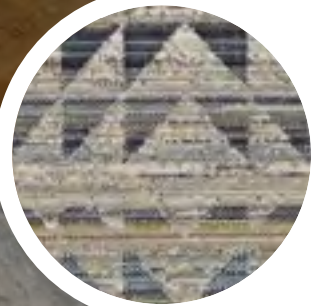
7'10" x 10'10"

9' x 12'

*All Sizes Are Approximate*

\* Designs FEZ1/3434 and FEZ5/5252 are available in a 18" x 18" sample.

This Collection is Only available to Authorized Couristan Brick-and-Mortar Dealers.





FEZ COLLECTION



FEZ1/3434  
MEDINA/EARTHEN



FEZ2/7234  
SIDI/SUNLIGHT



FEZ4/2222  
RIAD/SAND



FEZ4/6111  
RIAD/TOBACCO



FEZ3/3434  
SOUK/EARTHEN



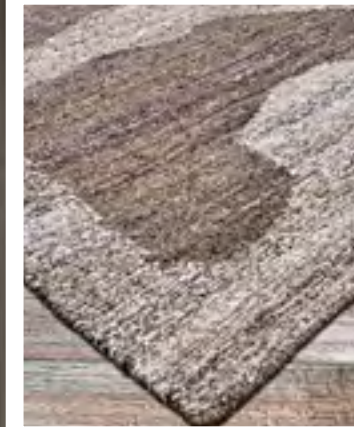
FEZ4/1331  
RIAD/ASH



FEZ5/5252  
PALAIS/STORM GREY



# JOSHUA COLLECTION



HAND-WOVEN OF 100% PET  
(HIGH CONTENT RECYCLED MATERIALS USED)

A NUBBY FINISH GIVES EACH PIECE A PERFECTLY WORN FEEL

INFLUENCED BY THE MID-CENTURY MODERN BOHEMIAN  
AESTHETIC OF JOSHUA TREE, THIS COLLECTION OF  
ANYWHERE/EVERYWHERE RUGS ARE SUPER COOL IN  
THE MOST RELAXED WAY

HAND-WOVEN OF SOFT PET, JOSHUA FEATURES SPACE-DYED,  
CARDED YARNS THAT ENHANCE THE OVERSIZED,  
ABSTRACT MOTIFS THAT REMIND US OF THE DESERT AT SUNSET

MOLD/MILDEW/WATER RESISTANT; UV STABILIZED

PILE HEIGHT: NO PILE (FLAT WEAVE)

HAND-WOVEN IN INDIA



\* All Designs are  
available in a  
18" x 18" and  
24" x 36" sample.

This Collection  
is Only available to  
Authorized Couristan  
Brick-and-Mortar  
Dealers.

## STOCKED SIZES

6' x 9'

8' x 10'

9' x 12'

*All Sizes Are Approximate*

*Due to the inherent nature of this handmade product, sizes may vary slightly.*



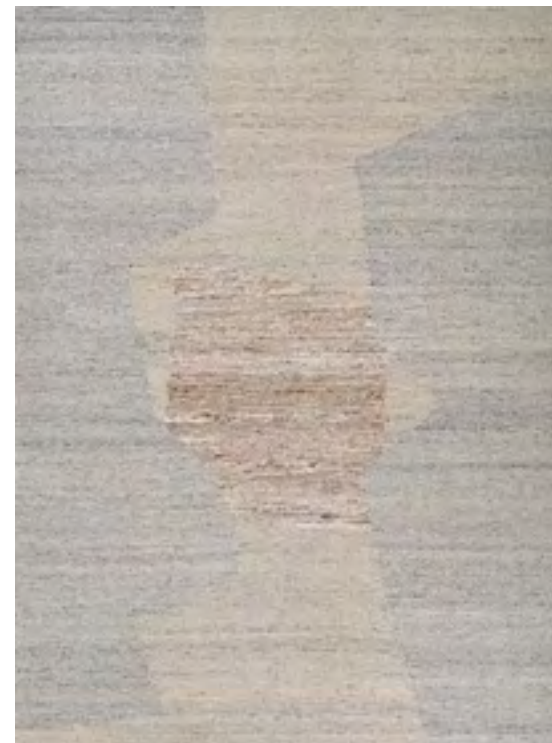
# JOSHUA COLLECTION



5821/1001  
PORTER/IVORY-GREY



5822/2001  
BARTLETT/COCOA



5824/1233  
HERON/GREY-MULTI



5825/2014  
DELORO/SAND



5823/1201  
SADDLEBACK/SNOW GREY





## LIGURIA COLLECTION



MACHINE-WOVEN OF 100% COURTRON™ POLYPROPYLENE  
IN A HIGH/LOW CONSTRUCTION EMULATING A HANDMADE  
CUT/LOOP PILE TECHNIQUE

TRANSITIONAL AND SOFT CONTEMPORARY DESIGNS GIVE  
THESE ANYWHERE/EVERYWHERE RUGS THE ABILITY TO TOGGLE  
EFFORTLESSLY FROM INDOORS TO OUT

SOFT, NEUTRAL MOTIFS ARE HIGHLIGHTED BY SPACE-DYED  
ACCENTS THAT WORK IN MULTIPLE ENVIRONMENTS

MOLD/MILDEW/WATER RESISTANT; UV STABILIZED

PILE HEIGHT: .157" • MADE IN TURKEY

\* Designs LIG2/1212  
and LIG3/2312 are  
available in a  
18" x 18" sample.

This Collection  
is Only available to  
Authorized Couristan  
Brick-and-Mortar  
Dealers.

### STOCKED SIZES

5'3" x 7'6"

6'6" x 9'6"

7'10" x 9'10"

9' x 12'1"

*All Sizes Are Approximate*



LIGURIA COLLECTION



LIG1/1001  
SARZANA/DOVE GREY



LIG2/1212  
LEVANTO/AQUA



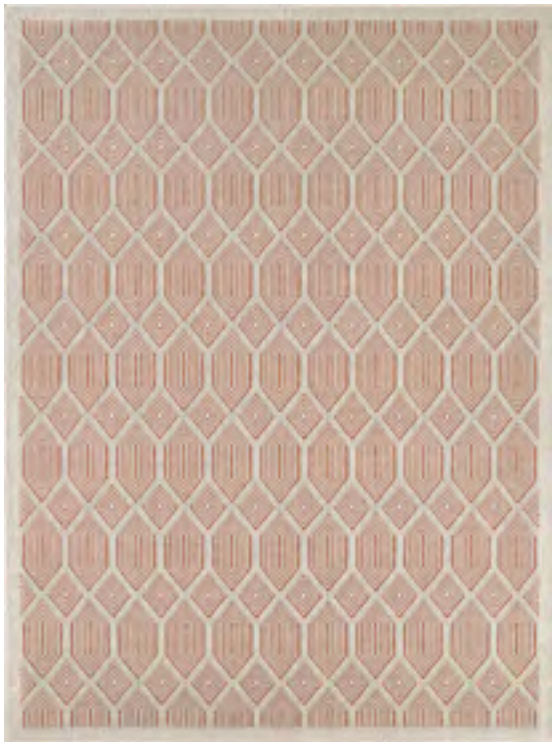
LIG3/3112  
RAPALLO/PEBBLE



LIG4/1001  
NOLI/DOVE GREY



LIG3/1212  
RAPALLO/AQUA



LIG3/2312  
RAPALLO/UMBER



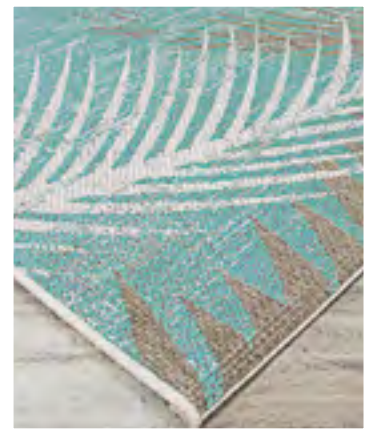
LIG4/1221  
NOLI/AZUL



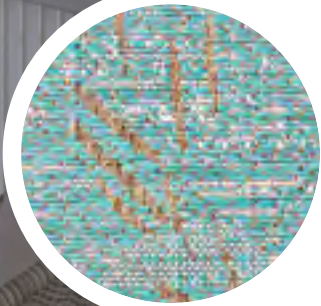
LIG4/2312  
NOLI/UMBER



MONACO COLLECTION



100% FIBER-ENHANCED COURTRON™ POLYPROPYLENE  
FEATURING A STRUCTURED FLATWOVEN CONSTRUCTION  
SUITABLE FOR OUTDOOR/INDOOR USE  
MOLD/MILDEW/WATER RESISTANT; UV STABILIZED  
PET-FRIENDLY • PILE HEIGHT: NO PILE (FLAT WEAVE)  
MADE IN BELGIUM



STOCKED SIZES

- 2' x 3'7"
- 3'9" x 5'5"
- 5'3" x 7'6"
- 5'10" x 9'2"
- 7'6" x 10'9"
- 8'6" x 13'
- 2'3" x 7'10" & 2'3" x 11'9" Runner

All Sizes Are Approximate

This Collection is available  
to Authorized Couristan  
Brick-and-Mortar and  
E-Commerce Dealers.



# MONACO COLLECTION



2106/3136  
SUMMER QUAY/IVORY-LIGHT GREEN



2106/3150  
SUMMER QUAY/COCOA NATURAL



2158/3220  
BOWLINE/COCOA NATURAL-IVORY



2216/3100  
COASTAL FLORA/IVORY-TURQUOISE





MONACO COLLECTION



2216/3143  
COASTAL FLORA/IVORY-SAPPHIRE



2216/3145  
COASTAL FLORA/IVORY-ORANGE



2470/2007  
MERIDIAN/MULTI



6041/3107  
MARBELLA/BLUE MIST-IVORY



2429/3108  
TROPICAL PALMS/OCEAN



2429/3134  
TROPICAL PALMS/AQUA



6041/3161  
MARBELLA/IVORY-SAND-AZURE



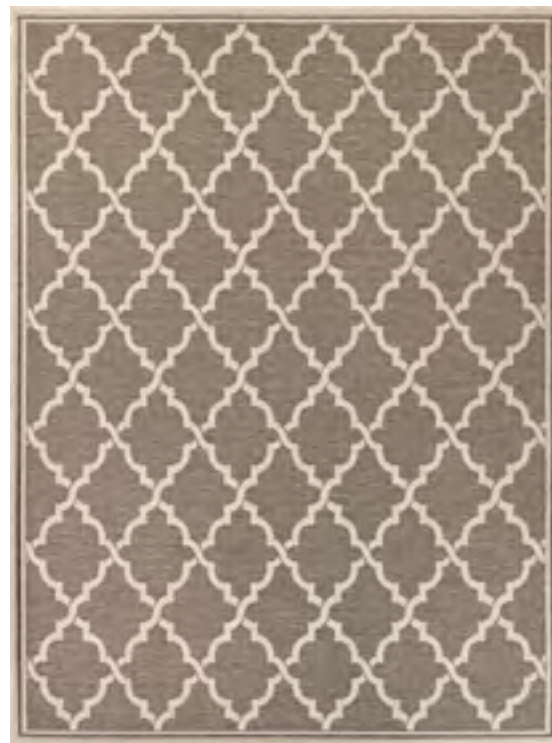
7847/1001  
ALASSIO/SAND-MAROON-SALMON



# MONACO COLLECTION



7847/1012  
ALASSIO/SAND-AZURE-TURQUOISE



7881/1037  
OCEAN PORT/TAUPE-SAND



7949/1235  
SEA PIER/SAND-AZURE



7949/1394  
SEA PIER/SAND-SEA MIST





## MONTE CARLO COLLECTION



100% FIBER-ENHANCED COURTRON™ POLYPROPYLENE  
FEATURING A STRUCTURED FLATWOVEN CONSTRUCTION  
SUITABLE FOR OUTDOOR/INDOOR USE  
MOLD/MILDEW/WATER RESISTANT; UV STABILIZED  
PET-FRIENDLY • PILE HEIGHT: NO PILE (FLAT WEAVE)  
MADE IN BELGIUM



### STOCKED SIZES

2' x 3'7"  
3'9" x 5'5"  
5'3" x 7'6"  
5'10" x 9'2"  
7'6" x 10'9"  
8'6" x 13'  
2'3" x 7'10" & 2'3" x 11'9" Runner

*All Sizes Are Approximate*

This Collection is available  
to Authorized Couristan  
Brick-and-Mortar and  
E-Commerce Dealers.



MONTE CARLO COLLECTION



2329/4716  
PALMETTE/GREY-IVORY



2329/6427  
PALMETTE/NAVY-IVORY



2333/2406  
COASTAL BREEZE/OCEAN-CHAMPAGNE



2333/3246  
COASTAL BREEZE/TAUPE-CHAMPAGNE



2331/6427  
SUMMER VINES/NAVY-IVORY





## NATURALISTIC™ COLLECTION



90% COURTRON™ POLYPROPYLENE / 10% POLYESTER

STRUCTURED FLATWOVEN CONSTRUCTION,  
SUITABLE FOR OUTDOOR/INDOOR USE

TRIBAL PATTERNS IN NATURAL TONES

FRINGE INCORPORATED INTO EACH AREA RUG;  
(ROUNDS ARE NOT AVAILABLE WITH FRINGE)

PERFECT FOR PATIOS, DECKS, KITCHEN AREAS,  
SUNROOMS AND ENTRYWAYS

MOLD/MILDEW/WATER RESISTANT; UV STABILIZED

PET-FRIENDLY

PILE HEIGHT: NO PILE (FLAT WEAVE)

MADE IN TURKEY



STOCKED SIZES  
WITH FRINGE

5'3" x 7'6"

6'6" x 9'6"

7'10" x 10'

2'7" x 9'10" Runner

SPECIAL SHAPES

5'3" & 7'10" Round

*All Sizes Are Approximate*

This Collection is available  
to Authorized Couristan  
Brick-and-Mortar and  
E-Commerce Dealers.



NATURALISTIC™ COLLECTION



3701/1001  
MOROCCAN/NATURAL-BROWN



3702/1002  
SONORAN/NATURAL-CHARCOAL



3704/1001  
ADOBE/NATURAL-BROWN



3705/1004  
SYMMETRY/NATURAL-BLACK



3703/1003  
RATTAN/NATURAL-CREAM



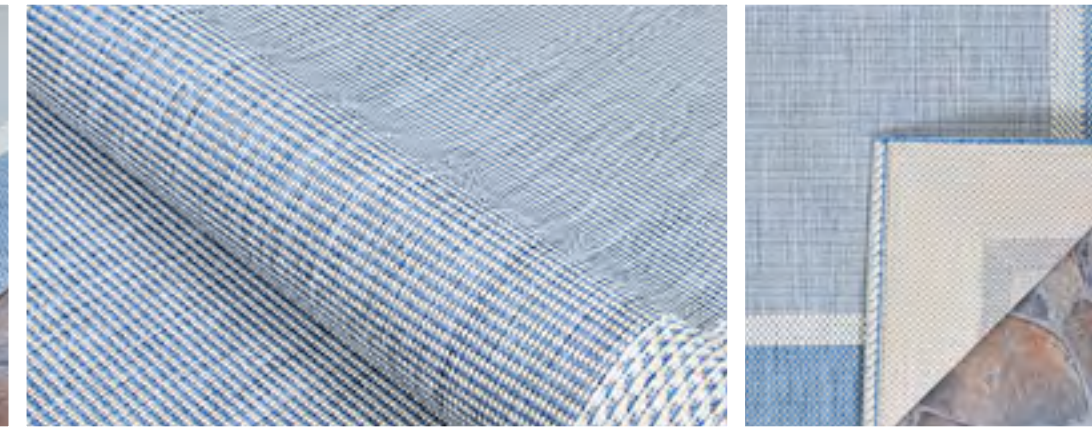


## PALO SANTO COLLECTION



\* Design PS01/4001  
is available in a  
18" x 18" sample.

This Collection is available  
to Authorized Couristan  
Brick-and-Mortar and  
E-Commerce Dealers.



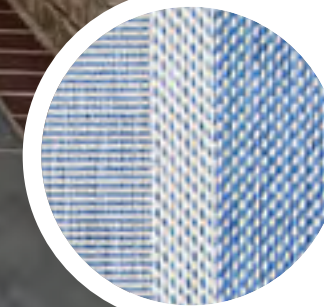
100% FIBER-ENHANCED COURTRON™ POLYPROPYLENE  
FEATURING A STRUCTURED FLATWOVEN CONSTRUCTION

SUITABLE FOR OUTDOOR/INDOOR USE

MOLD/MILDEW/WATER RESISTANT; UV STABILIZED

PET-FRIENDLY • PILE HEIGHT: NO PILE (FLAT WEAVE)

MADE IN TURKEY



### STOCKED SIZES

5'3" x 7'6"

6'5" x 9'2"

7'9" x 10'9"

8'6" x 13'

*All Sizes Are Approximate*



PALO SANTO COLLECTION



PS01/4001  
LA PAZ/POOL BLUE



PS02/4001  
TULUM/POOL BLUE



PS03/4001  
BACALAR/POOL BLUE



PS04/4001  
ENSENADA/POOL BLUE





## RECIFE COLLECTION



100% FIBER-ENHANCED COURTRON™ POLYPROPYLENE  
FEATURING A STRUCTURED FLATWOVEN CONSTRUCTION  
SUITABLE FOR OUTDOOR/INDOOR USE  
MOLD/MILDEW/WATER RESISTANT; UV STABILIZED  
PET-FRIENDLY • PILE HEIGHT: NO PILE (FLAT WEAVE)  
MADE IN BELGIUM



### STOCKED SIZES

2' x 3'7"  
3'9" x 5'5"  
5'3" x 7'6"  
5'10" x 9'2"  
7'6" x 10'9"  
8'6" x 13'  
2'3" x 7'10" & 2'3" x 11'9" Runner

### SPECIAL SHAPES

7'6" & 8'6" Round / 7'6" & 8'6" Square

*All Sizes Are Approximate*

This Collection is available  
to Authorized Couristan  
Brick-and-Mortar and  
E-Commerce Dealers.



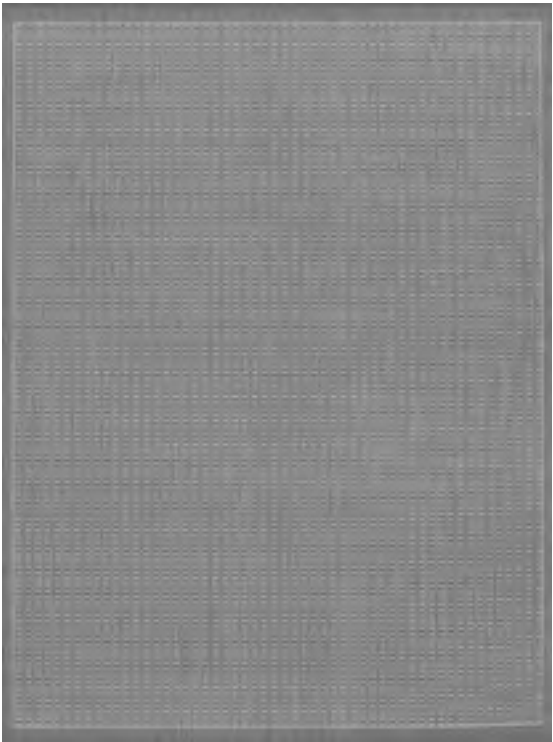
RECIFE COLLECTION



1001/1212  
SADDLE STITCH/CHAMPAGNE-BLUE



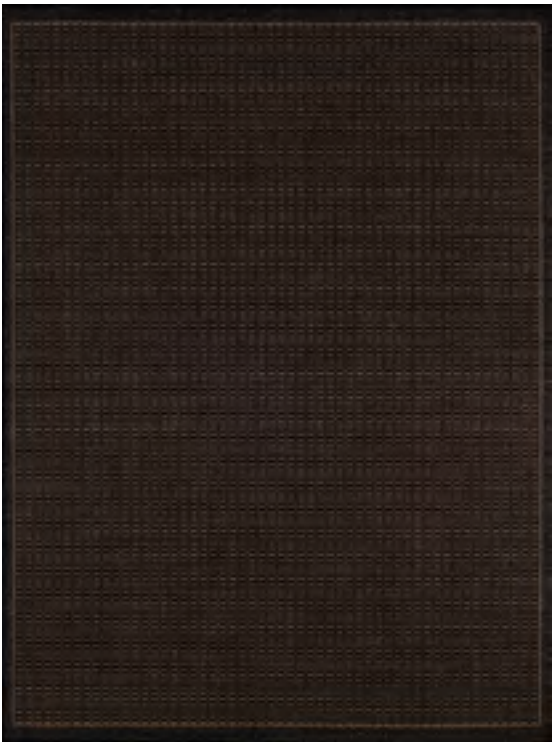
1001/1500  
SADDLE STITCH/COCOA-NATURAL



1001/3012  
SADDLE STITCH/GREY-WHITE



1001/4000  
SADDLE STITCH/TERRA-COTTA-NATURAL



1001/2000  
SADDLE STITCH/BLACK-COCOA



1001/2312  
SADDLE STITCH/CHAMPAGNE-TAUPE



1001/6500  
SADDLE STITCH/IVORY-INDIGO



1005/2000  
CHECKERED FIELD/BLACK-COCOA



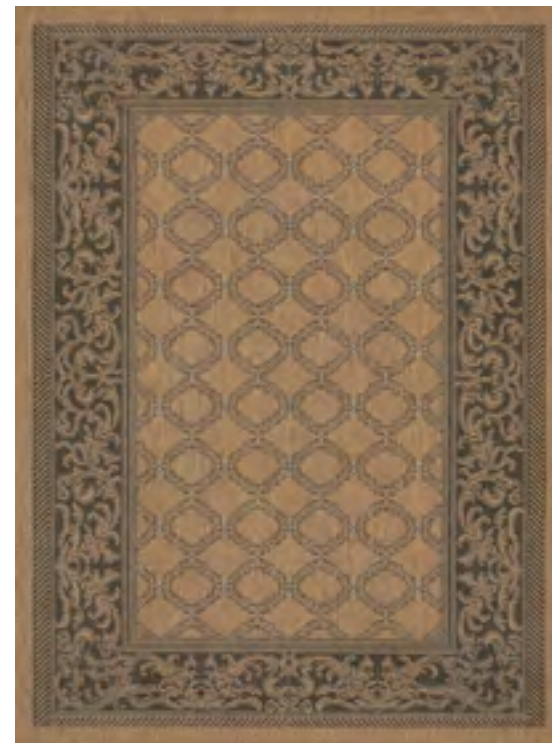
# RECIFE COLLECTION



1005/2500  
CHECKERED FIELD/COCOA-BLACK



1005/3000  
CHECKERED FIELD/NATURAL-COCOA



1016/2000  
GARDEN LATTICE/COCOA-BLACK



1043/2500  
SUMMIT/COCOA-BLACK



1005/3012  
CHECKERED FIELD/GREY-WHITE



1005/5005  
CHECKERED FIELD/NATURAL-GREEN



1078/3115  
ANTIQUE MEDALLION/BLACK-COCOA



1222/0722  
ISLAND RETREAT/BEIGE-NATURAL



RECIFE COLLECTION



1222/1122  
ISLAND RETREAT/TERRA-COTTA-NATURAL



1318/2550  
CABANA TILE/DRIFTWOOD-BLACK



1562/0154  
SEAGRASS/NATURAL-BLACK



1583/1212  
VERANDA/CHAMPAGNE-BLUE



1514/0121  
ZEBRA/BLACK-COCOA



1516/0111  
GARDEN COTTAGE/BLACK-COCOA



1583/2312  
VERANDA/CHAMPAGNE-TAUPE



1583/2500  
VERANDA/COCOA-BLACK



# RECIFE COLLECTION



1583/6500  
VERANDA/IVORY-INDIGO



1588/1021  
ELEPHANT/COCOA-BLACK



1681/2500  
WICKER STITCH/COCOA-BLACK



1682/6500  
ROPE KNOT/IVORY-INDIGO



1681/1500  
WICKER STITCH/COCOA-NATURAL



1681/2000  
WICKER STITCH/BLACK-COCOA



1684/1900  
GARDEN KEY/SAGE-CHAMPAGNE



5313/1212  
GAZEBO STRIPE/CHAMPAGNE-BLUE



RECIFE COLLECTION



5313/2312  
GAZEBO STRIPE/CHAMPAGNE-TAUPE



5313/3312  
GAZEBO STRIPE/CHAMPAGNE-GREY



5526/1212  
STRIA TEXTURE/CHAMPAGNE-BLUE



5526/1812  
STRIA TEXTURE/NATURAL-GREEN



5526/0712  
STRIA TEXTURE/NATURAL-COFFEE



5526/1112  
STRIA TEXTURE/NATURAL-TERRA-COTTA



5526/2312  
STRIA TEXTURE/CHAMPAGNE-TAUPE



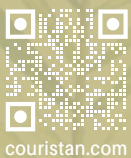
5526/3312  
STRIA TEXTURE/CHAMPAGNE-GREY





TWO EXECUTIVE DRIVE, FORT LEE, NEW JERSEY 07024 • 800.223.6186 • [COURISTAN.COM](http://COURISTAN.COM)

Wall-To-Wall Carpet • Area Rugs • Roll Runners • Custom Rugs



[couristan.com](http://couristan.com)



MAY 2025