



COURISTAN®

July – December
2025

Couri-er

HAMADAN COLLECTION

Hand-Knotted of 100% Wool with Short-Fringed Edges

Like its Beautiful Namesake, Hamadan is a Collection Rooted in History with a Touch of Modernity

Hand-Knotted Kazak Designs are Given a Modern Feel in Tonal Elements of Grey, Blue and Earthen Hues, Allowing for Looks that Work in the Most Eclectic of Aesthetics

Utilizes an Oushak Weave that Allows for a Loose Knot and a More Laidback Feel

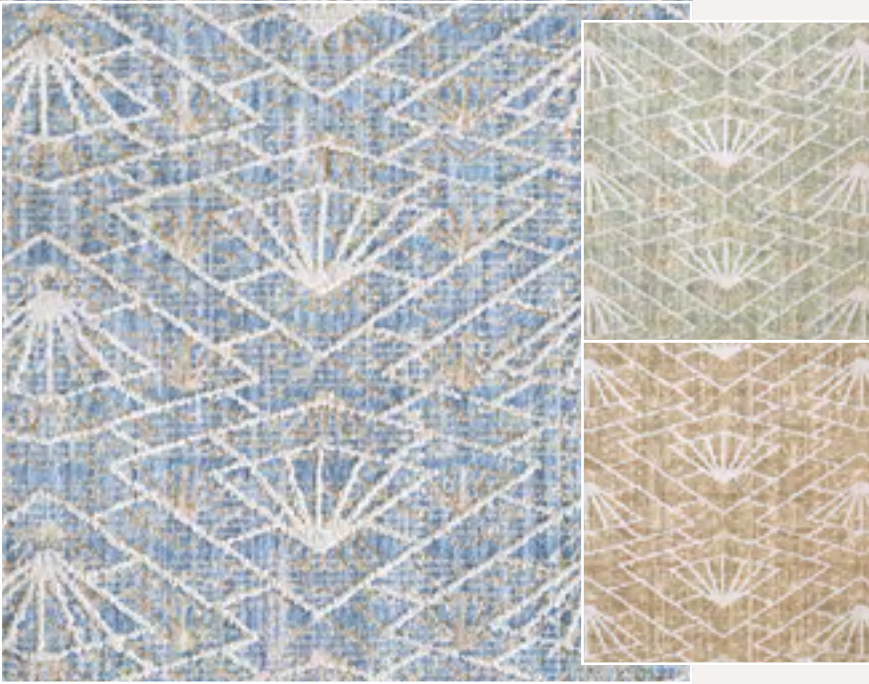
Pile Height: .039" • Hand-Knotted in India • Available in 5 Area Rugs

Sizes with Fringe: 6'x 9', 8'x 10', 9'x 12', 10'x 14'



RESIDENTIAL BROADLOOM & CUSTOM AREA RUGS INTRODUCTIONS

HORSESHOE CANYON



BRAND Creations™
PILE 100% Space-Dyed Polyester
WEAVE Face-to-Face Woven Wilton High/Low Cut-Pile
WIDTH 13'2" (4 Meters)

Available in:
Blue, Green
and Beige

BRYCE CANYON



BRAND Creations™
PILE 100% Space-Dyed Polyester
WEAVE Face-to-Face Woven Wilton
High/Low Cut-Pile
WIDTH 13'2" (4 Meters)

Available in: Blue, Green and Beige

NOTE

RESIDENTIAL BROADLOOM

*These products can be fabricated
into a Custom Size Area Rug.*

Finishing options include the following bindings: Chenille,
Cotton Fabric, Linen and Courtron™ Polypropylene
(For Outdoor/Indoor Usage), 3/8" Synthetic Binding
(For Outdoor/Indoor Usage), Wool and Synthetic Serging,
and 2" Length Fringe are also available.

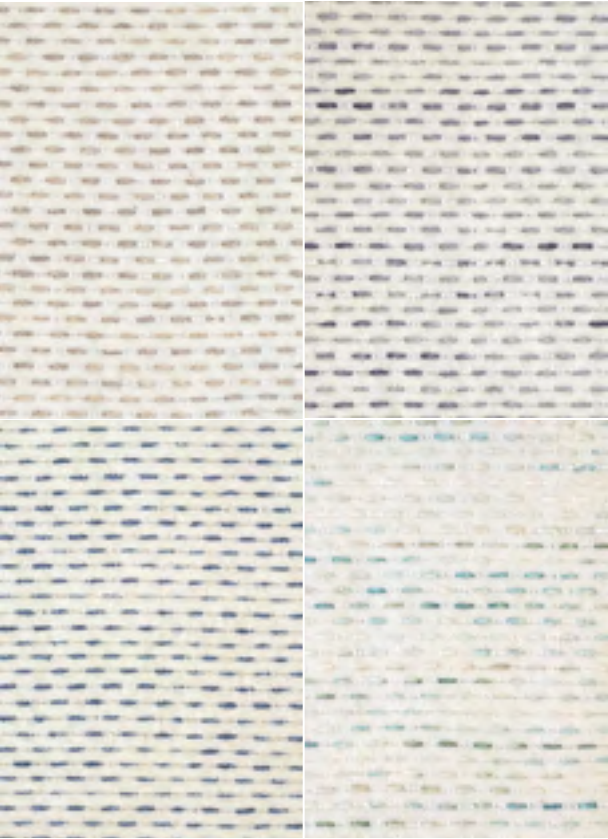
Applied Backing Options Include: Outdoor Living Cushion,
Non-Skid and Felt (*Standard*)

Contact your Couristan Territory Manager today in regard
to our Custom Rug Online Calculator, Boards and Program.

BILBAO

BRAND Premiere®
PILE 100% Pure New Zealand Wool
WEAVE Hand-Loomed Cut and Loop Pile
WIDTH 15'

Available in: Flax, Silver, Denim, Redwood (shown)
and Turquoise



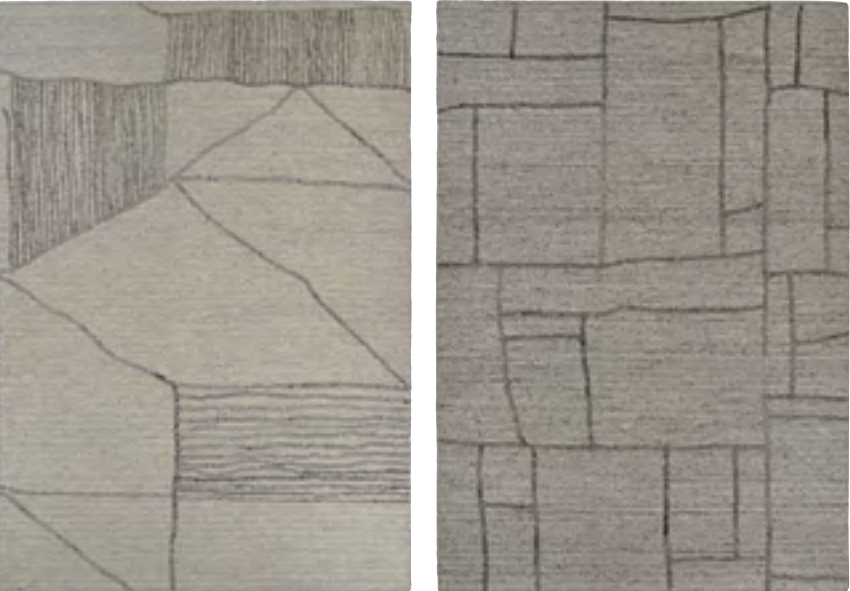
HYDE VILLAGE

BRAND Premiere®
PILE 100% Pure Wool
WEAVE Hand-Loomed Loop Pile
WIDTH 15'

Available in: Confetti (shown), Biscotti, Silver Lake,
Elderberry and Seaglass



HANDMADE AREA RUG INTRODUCTIONS



CIRCA COLLECTION

HAND-TUFTED OF 100% WOOL

OVERSIZED GEOMETRIC AND LINEAR MOTIFS GIVE THE WEAVE A MODERN EDGE
HANDMADE TO MIMIC THE DELICATE HAND-KNOTTED WEAVE FOUND IN VINTAGE RUGS, THIS GROUP COMBINES A HORIZONTAL SOUMAK TUFT WITH RAISED CUT-PILE TOUCHES

Available in 4 Area Rugs
SIZES | 5' x 8', 8' x 10', 9' x 12'



DES3/3003
Mahal/Natural-Blue



DES5/2202
Odisha/Sunset



DES6/5005
Madurai/Turquoise

DESI COLLECTION

HAND-KNOTTED OF 100% WOOL
WITH SHORT -FRINGED EDGES

DESI IS A CARNIVAL OF COLOR THAT STRIKES YOUR SENSES WITH ITS BALANCE OF IN-YOUR-FACE BOLD HUES AND BLENDED TONAL VIBES

TAKING BEAUTIFUL IKAT, HERIZ AND OTHER TRADITIONAL MOTIFS, BUT WITH A TWIST, CREATING OVERSIZED ELEMENTS AND INFUSING THEM WITH RICH, ON-TREND COLOR, CREATING MODERN HEIRLOOMS

PILE HEIGHT: .196"

HAND-KNOTTED IN INDIA

Available in 6 Area Rugs

*SIZES
with fringe* | 6' x 9'
8' x 10'
9' x 12'
10' x 14'

LOTUS COLLECTION

HAND-TUFTED OF 100% HAND-SPUN NEW ZEALAND WOOL

OVERSIZED BLOCK PATTERNS ARE ENHANCED IN AN OVER-TUFTED CONSTRUCTION THAT LENDS TEXTURE AND MAKES A BOLD STATEMENT IN ANY ENVIRONMENT

EARTH TONES GIVE THESE DESIGNS THEIR GROUNDED FEEL, ALLOWING FOR EFFORTLESS PLACEMENT

YARNS ARE SUBTLY SPACE-DYED GIVING THE COLORS SLIGHT VARIATIONS

PILE HEIGHT: .590" | HAND-TUFTED IN INDIA

Available in 4 Area Rugs

SIZES | 5' x 8', 8' x 10', 9' x 12'





RESIDENTIAL BROADLOOM & CUSTOM AREA RUGS

OUTDOOR / INDOOR INTRODUCTIONS



CB8L/0001 Natural



CBWK/0005 Blue



CBWK/0001 Natural



CBWK/0002 Green



CB8L/0002 Green



CB8L/0003 Black



CBWK/0003 Onyx



CBWK/0004 Terra-Cotta



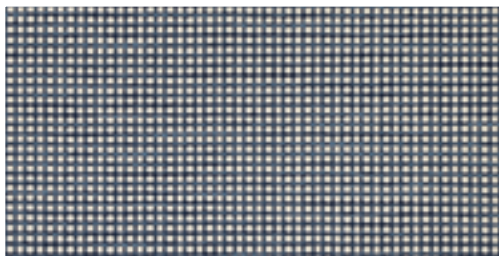
CB8L/0004 Terra-Cotta



CB8L/0005 Blue

BRAND: Creations™ Outdoor/Indoor Series
PILE: 100% Courtron™ Polypropylene, **WEAVE:** Structured Flatwoven, **WIDTH:** 15'

BRAND: Creations™ Outdoor/Indoor Series
PILE: 100% Courtron™ Polypropylene, **WEAVE:** Structured Flatwoven, **WIDTH:** 15'



CBWA/0001 Navy



CBWA/0003 Black



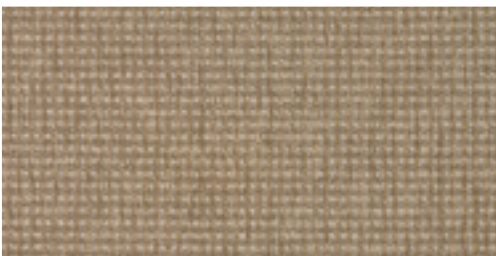
CBWA/0004 Grey



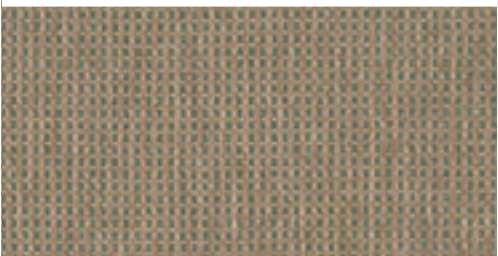
CBWA/0005 Sand



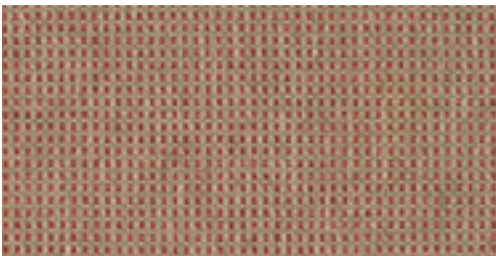
CBWA/0002 Aqua



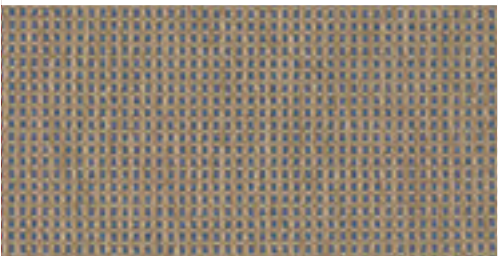
CBKP/0001 Natural



CBKP/0002 Green



CBKP/0004 Terra-Cotta



CBKP/0005 Blue

BRAND: Creations™ Outdoor/Indoor Series
PILE: 100% Courtron™ Polypropylene, **WEAVE:** Structured Flatwoven, **WIDTH:** 15'



CBKP/0003 Black

BRAND: Creations™ Outdoor/Indoor Series
PILE: 100% Courtron™ Polypropylene, **WEAVE:** Hand-Loomed Flatweave, **WIDTH:** 16'4" (5 Meters)

ANYWHERE/EVERYWHERE AREA RUGS

NEW OUTDOOR/INDOOR INTRODUCTIONS

JOSHUA COLLECTION

Hand-Woven of 100% PET (High Content Recycled Materials Used)

A Nubby Finish Gives Each Piece a Perfectly Worn Feel

Influenced by the Mid-Century Modern Bohemian Aesthetic of Joshua Tree,
this Collection of Anywhere/Everywhere Rugs are Super Cool in the Most Relaxed Way

Hand-Woven of Soft PET, Joshua Features Space-Dyed, Carded Yarns that Enhance the Oversized,
Abstract Motifs that Remind Us of the Desert at Sunset

Mold/Mildew/Water Resistant; UV Stabilized • Pile Height: No Pile (Flat Weave) • Hand-Woven in India

SIZES | 6' x 9', 8' x 10', 9' x 12'



14 SKU "A" FRAME LADDER HANDMADE AREA RUG COLLECTIONS DISPLAY UNIT

DISPLAY: (14) – 24" x 36" SAMPLE SWATCHES

DIMENSIONS: 84" H x 28" W x 30" D

CONTACT YOUR TERRITORY MANAGER FOR MORE INFORMATION

