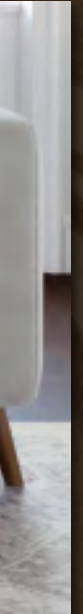
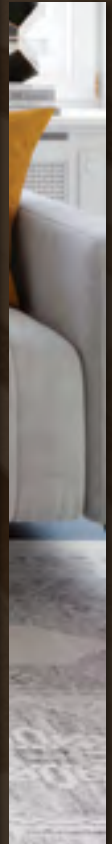
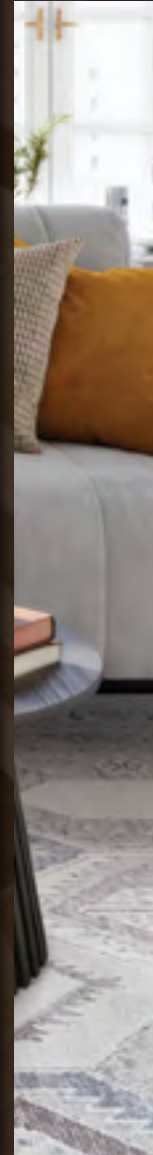


# ARTISANAL

HANDMADE COLLECTIONS



Family Owned Since 1926

COURISTAN





# ARTISANAL

HANDMADE COLLECTIONS

There is something truly magical about the journey of a handmade rug from loom to room; each piece tells its own story, vibrating with the energy of the hands that created it.

Beginning with the selection of yarns, the intricate dying processes and ultimately, the weaving, these pieces are crafted with the knowledge of age-old practices that are passed down over countless generations. Handmade rugs have always held a very special place in the fiber of Couristan’s history and we honor that history with our collection of artisan pieces.

Couristan began its tradition of quality almost 100 years ago, offering hand-knotted rugs that reflected their deep history. Over the years, the assortment has moved to embrace the changing times with more selections in machine-woven and outdoor qualities; this year seemed like the perfect time to go back to our roots.

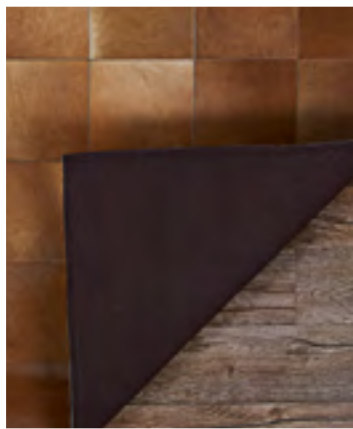
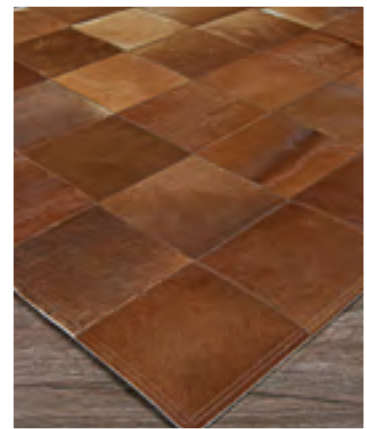
Over the last several months, we have worked hard to create a collection that is reflective of Couristan’s lineage in rugs, returning to handmade pieces that speak to it. These modern heirlooms are au courant in aesthetic with a gentle nod to the rugs that came before them. Beautiful hand-knotted designs, absent of repeats, are given new life in hues of pink, turquoise and indigo. Sustainable collections in undyed wools and chunky finishes showcase the true artistry of the weavers, highlighting that “thing” about these rugs that made us fall in love all those years ago.

Our hope is that you listen carefully to the stories that our rugs tell and give them a place to showcase their beauty.

1-4	CHALET	33-36	HUDSON
5-8	CIORA	37-40	JULIET
9-12	CIRCA	41-44	KALBARRI
13-16	COSMOROS	45-48	LOTUS
17-20	DESI	49-52	NORWAY
21-24	ELYSIAN	53-56	SIMONE
25-28	HAMADAN	57-60	UTOPIA
29-32	HANCOCK		



CHALET COLLECTION



MADE OF 100% NATURAL COWHIDE LEATHER

MATERIALS SOURCED ETHICALLY

UNIQUE MODERN STRIPE, ABSTRACT  
AND GEOMETRIC DESIGNS

FELT BACKING TO ENSURE QUALITY,  
DURABILITY AND LASTING BEAUTY

PILE HEIGHT: NO PILE (ANIMAL SKIN)

HAND-CRAFTED IN INDIA



\* Designs 0027/0101  
and 0348/1579  
are available in a  
18" x 18" sample.

\*\* Custom size  
area rugs may  
be ordered.

This Collection is available  
to Authorized Couristan  
Brick-and-Mortar and  
E-Commerce Dealers.

STOCKED SIZES

- 2' x 4'
- 3'4" x 5'4"
- 5'4" x 8'
- 8' x 11'4"
- 9'4" x 13'4"

All Sizes Are Approximate

Due to the inherent nature of this handmade product, sizes may vary slightly.



CHALET COLLECTION



0027/0101\*  
PLANK/GREY-IVORY



0348/1579\*  
TILE/BROWN



9212/0312  
TESSELA/CHOCOLATE



9236/0411  
FREEFORM/CAPPUCINO



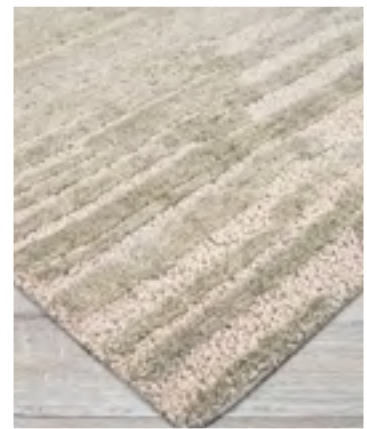
3259/0243  
MEANDER/BLACK-IVORY



9274/0167  
PRISM/NATURALS



CIORA COLLECTION



100% SUSTAINABLE WOOL

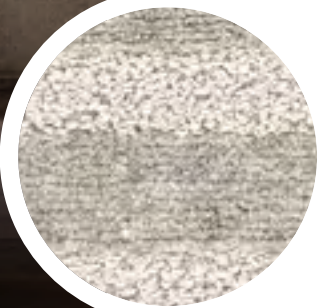
HAND-KNOTTED IN A CHUNKY CONSTRUCTION,  
UTILIZING CARVED ELEMENTS FOR ADDED TEXTURE

CIORA IS THE GAELIC WORD FOR "SHEEP",  
PERFECT FOR THIS COLLECTION OF KNOTTED RUGS,  
AS THE BACK FEATURES A LOOPED FINISH REMINISCENT  
OF SHEEP WANDERING THE IRISH COUNTRYSIDE

GEOMETRIC AND ABSTRACT DESIGNS ADORN  
THESE THICKLY KNOTTED PIECES GIVING THEM A  
MODERN FEEL IN AN EARTHEN COLOR PALETTE

PILE HEIGHT: UP TO 1"

HAND-KNOTTED IN INDIA



\* All Designs are  
available in a  
18" x 18" and  
24" x 36" sample.

This Collection  
is Only available to  
Authorized Couristan  
Brick-and-Mortar  
Dealers.

STOCKED SIZES

5' x 8'

8' x 10'

9' x 12'

10' x 14'

*All Sizes Are Approximate*

*Due to the inherent nature of this handmade product, sizes may vary slightly.*



# CIORA COLLECTION



4162/1001  
WARREN/LIGHT BEIGE



4163/2001  
WAVES/SAND



4164/4001  
RHOMBUS/RAW SMOKE

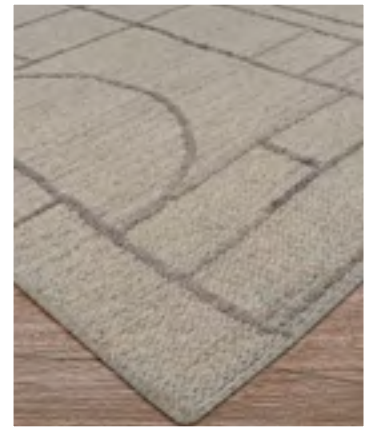


4165/3001  
DUNES/WHEAT





CIRCA COLLECTION



HAND-TUFTED OF 100% WOOL

OVERSIZED GEOMETRIC AND LINEAR MOTIFS  
GIVE THE WEAVE A MODERN EDGE

HANDMADE TO MIMIC THE DELICATE HAND-KNOTTED  
WEAVE FOUND IN VINTAGE RUGS, THIS GROUP COMBINES  
A HORIZONTAL SOUMAK TUFT WITH RAISED CUT-PILE TOUCHES

PILE HEIGHT: .393"

HAND-TUFTED IN INDIA



STOCKED SIZES

5' x 8'

8' x 10'

9' x 12'

*All Sizes Are Approximate*

*Due to the inherent nature of this handmade product, sizes may vary slightly.*

\* All Designs are  
available in a  
18" x 18" and  
24" x 36" sample.

This Collection is available  
to Authorized Couristan  
Brick-and-Mortar and  
E-Commerce Dealers.



CIRCA COLLECTION



7216/2002  
FOUNDRY/WHEAT



7217/0101  
CODRUS/IVORY



7218/1301  
HARROW/SILVER



7219/2001  
DOURIS/SAND





## COSMOROS COLLECTION



HAND-WOVEN OF 100% JUTE WITH FRINGED EDGES

ETHNIC-INSPIRED ABSTRACT DESIGNS BOLDLY  
HIGHLIGHT THE NATURAL FIBERS OF THIS COLLECTION,  
GIVING THEM AN ORGANIC FEEL

A NATURAL COLOR PALETTE ALLOWS FOR EASE OF  
DESIGN OPTIONS, WORKING WELL IN ECLECTIC, MODERN  
AND TRANSITIONAL ENVIRONMENTS

NOT INTENDED FOR OUTDOOR USE

PILE HEIGHT: ZERO PILE

HAND-WOVEN IN INDIA



STOCKED SIZES  
(WITH FRINGE)

6' x 9'

8' x 10'

*All Sizes Are Approximate*

*Due to the inherent nature of this handmade product, sizes may vary slightly.*

This Collection is available  
to Authorized Couristan  
Brick-and-Mortar and  
E-Commerce Dealers.



COSMOROS COLLECTION



5416/1601  
HAMAR/BLACK



5417/1401  
ASANTE/NATURAL



5419/1401  
HIMBA/NATURAL



5420/1501  
KARO/NATURAL-BLACK



5418/1601  
YORUBA/BLACK





DESI COLLECTION



\* All Designs are available in a 18"x18" and 24"x36" sample.

This Collection is Only available to Authorized Couristan Brick-and-Mortar Dealers.



HAND-KNOTTED OF 100% WOOL WITH SHORT-FRINGED EDGES

DESI IS A CARNIVAL OF COLOR THAT STRIKES YOUR SENSES WITH ITS BALANCE OF IN-YOUR-FACE BOLD HUES AND BLENDED TONAL VIBES

TAKING BEAUTIFUL IKAT, HERIZ AND OTHER TRADITIONAL MOTIFS, BUT WITH A TWIST, CREATING OVERSIZED ELEMENTS AND INFUSING THEM WITH RICH, ON-TREND COLOR, CREATING MODERN HEIRLOOMS

PILE HEIGHT: .196" • HAND-KNOTTED IN INDIA



STOCKED SIZES (WITH FRINGE)

- 6' x 9'
- 8' x 10'
- 9' x 12'
- 10' x 14'

All Sizes Are Approximate

Due to the inherent nature of this handmade product, sizes may vary slightly.



DESI COLLECTION



DES1/1001  
JODHPUR/SAND



DES2/2002  
MUGHAL/SUNRISE



DES4/4004  
UDAIPUR/RUST



DES5/2202  
ODISHA/SUNSET



DES3/3003  
MAHAL/NATURAL-BLUE



DES6/5005  
MADURAI/TURQUOISE



ELYSIAN COLLECTION



HAND-KNOTTED OF 100% WOOL WITH FRINGED EDGES

A FRESH APPROACH TO TRADITIONAL MOTIFS, ELYSIAN IS A UNIQUE COLLECTION OF HANDMADE RUGS WOVEN IN A BEAUTIFUL HIGH/LOW CONSTRUCTION

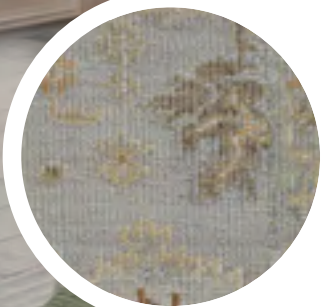
UTILIZING AN OUSHAK WEAVE, EACH PIECE FEATURES RAISED ELEMENTS TO ENHANCE THE DESIGN GIVING THEM TEXTURE AND INTEREST

DESIGNS ARE WITHOUT REPEAT ALLOWING FOR A BOLD STATEMENT IN ANY ROOM IN WHICH THEY ARE PLACED

WORKS EFFORTLESSLY IN TRADITIONAL, TRANSITIONAL, CONTEMPORARY AND ECLECTIC ENVIRONMENTS

PILE HEIGHT: .078"

HAND - KNOTTED IN INDIA



\* All Designs are available in a 18" x 18" and 24" x 36" sample.

This Collection is Only available to Authorized Couristan Brick-and-Mortar Dealers.

STOCKED SIZES (WITH FRINGE)

5'6" x 8'6"

7'6" x 9'6"

8'6" x 11'6"

9'6" x 13'6"

All Sizes Are Approximate

Due to the inherent nature of this handmade product, sizes may vary slightly.



ELYSIAN COLLECTION



ELO1/1006  
ATHENA/STORM GREY



ELO1/2002  
ATHENA/SUNRISE



ELO2/3001  
POSEIDON/GRANITE-MULTI





# HAMADAN COLLECTION



HAND-KNOTTED OF 100% WOOL WITH  
SHORT-FRINGED EDGES

LIKE ITS BEAUTIFUL NAMESAKE, HAMADAN IS A COLLECTION  
ROOTED IN HISTORY WITH A TOUCH OF MODERNITY

HAND-KNOTTED KAZAK DESIGNS ARE GIVEN A MODERN  
FEEL IN TONAL ELEMENTS OF GREY, BLUE AND EARTHEN HUES,  
ALLOWING FOR LOOKS THAT WORK IN THE MOST ECLECTIC  
OF AESTHETICS

UTILIZES AN OUSHAK WEAVE THAT ALLOWS FOR A  
LOOSE KNOT AND A MORE LAIDBACK FEEL

PILE HEIGHT: .039"

HAND-KNOTTED IN INDIA



\* All Designs are  
available in a  
18" x 18" and  
24" x 36" sample.

This Collection  
is Only available to  
Authorized Couristan  
Brick-and-Mortar  
Dealers.

## STOCKED SIZES (WITH FRINGE)

6' x 9'

8' x 10'

9' x 12'

10' x 14'

*All Sizes Are Approximate*

*Due to the inherent nature of this handmade product, sizes may vary slightly.*



HAMADAN COLLECTION



6122/1001  
OMAN/IVORY



6123/2012  
BALEARIC/SILVER-MULTI



6124/3111  
TASMAN/CAMEL



6125/2001  
KARA/SILVER



6124/3001  
TASMAN/BROWN





HANCOCK COLLECTION



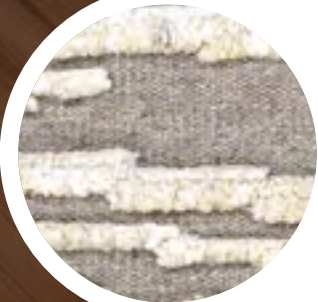
HAND-KNOTTED OF 100% SUSTAINABLE WOOL

KNOTTED IN A LOOSE CONSTRUCTION AND FEATURING A CUT-PILE FINISH THAT ADDS HIGH/LOW TEXTURAL ELEMENTS TO EACH GEOMETRIC AND TRANSITIONAL MOTIF

CASUAL FEEL IN A HAND-KNOTTED TECHNIQUE ALLOWS THESE PIECES TO WORK IN MULTIPLE ENVIRONMENTS

PILE HEIGHT: .511"

HAND-KNOTTED IN INDIA



\* All Designs are available in a 18"x18" and 24"x36" sample.

This Collection is Only available to Authorized Couristan Brick-and-Mortar Dealers.

STOCKED SIZES

5'6" x 8'6"

7'6" x 9'6"

9' x 12'

10'6" x 13'6"

All Sizes Are Approximate

Due to the inherent nature of this handmade product, sizes may vary slightly.



# HANCOCK COLLECTION



5904/1801  
ALTAI/NATURAL



5905/3012  
ATLAS/GREY



5906/6402  
BROOKS/MOCHA



5907/0001  
CARPATHIAN/CHARCOAL





HUDSON COLLECTION



\* All Designs are available in a 18"x18" and 24"x36" sample.

This Collection is Only available to Authorized Couristan Brick-and-Mortar Dealers.



HAND-KNOTTED OF 100% WOOL  
WITH FRINGED EDGES

A UNIQUE COLOR PALETTE ENHANCES THE  
CONTEMPORARY FEEL OF THESE PIECES, UTILIZING SPACE-DYED  
YARNS IN INTERESTING BLENDS OF HUES

WITH A NOD TO OUR NEW YORK ROOTS, HUDSON IS A  
SOPHISTICATED COLLECTION OF HAND-KNOTTED DESIGNS  
IN A CASUAL 3/20 QUALITY

INFLUENCED BY ARCHITECTURAL DETAILS, DESIGNS  
ARE LINEAR YET ABSTRACT

PILE HEIGHT: .236" • HAND-KNOTTED IN INDIA



STOCKED SIZES  
(WITH FRINGE)

6' x 9'

8' x 10'

9' x 12'

10' x 14'

*All Sizes Are Approximate*

*Due to the inherent nature of this handmade product, sizes may vary slightly.*



HUDSON COLLECTION



3500/0602  
MIDTOWN/OLIVE



3501/1306  
MURRAY HILL/PLUM



3502/1302  
FULTON/ICE BLUE



3503/1401  
METRO/GOLD





## JULIET COLLECTION



HAND-TUFTED OF 100% WOOL

THIS COLLECTION UTILIZES A LOOPED FINISH, GIVING EACH PIECE A BEAUTIFUL TEXTURAL ELEMENT; SPACE-DYED YARNS ARE USED TO ADD DEPTH

TONAL DESIGNS IN TRADITIONAL PATTERNS ALLOW THESE RUGS TO WORK IN EVERYTHING FROM A BOHEMIAN TO A TRADITIONAL ROOM

INSPIRED BY KERMAN, HERIZ AND MALAYER MOTIFS, THESE PIECES ARE MODERN INTERPRETATIONS OF CENTURIES-OLD DESIGN AESTHETICS

PILE HEIGHT: .393"

HAND-TUFTED IN INDIA



### STOCKED SIZES

5' x 8'

8' x 10'

9' x 12'

10' x 14'

*All Sizes Are Approximate*

*Due to the inherent nature of this handmade product, sizes may vary slightly.*

\* All Designs are available in a 18" x 18" sample.

This Collection is Only available to Authorized Couristan Brick-and-Mortar Dealers.



# JULIET COLLECTION



6927/2771  
ROSALINE/LIMESTONE



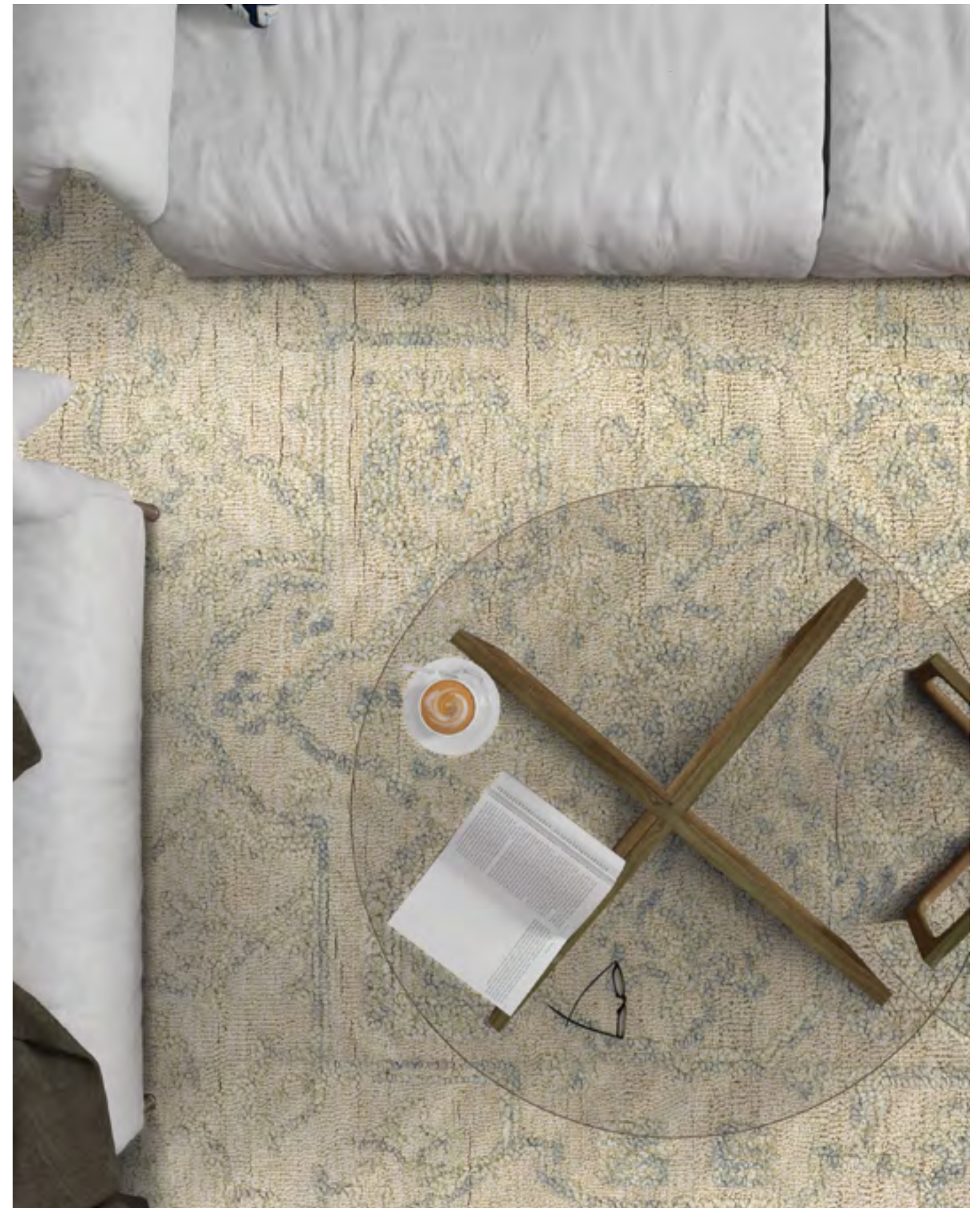
6927/2882  
ROSALINE/WHEAT



6927/3222  
ROSALINE/FOG GREY

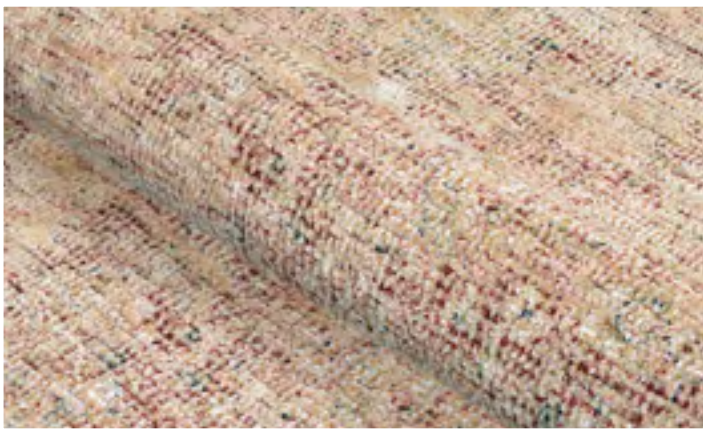


6927/4134  
ROSALINE/SEAFOAM





# KALBARRI COLLECTION



HAND-WOVEN BASE OF THE SOFTEST BLEND OF  
COTTON/POLYESTER/RAYON/WOOL

48% COTTON / 33% POLYESTER / 11% RAYON / 8% WOOL

A UNIQUE COLLECTION OF DIGITALLY PRINTED PIECES  
DESIGNED TO EMULATE THE LOOK OF HIGHER-END ANTIQUE,  
HAND-KNOTTED RUGS

TRADITIONAL DESIGNS WITH A MODERN TWIST,  
THESE RUGS FEATURE BEAUTIFUL PERSIAN-INSPIRED MOTIFS  
IN FASHION-FORWARD COLOR PALETTES

FRINGED EDGES • PILE HEIGHT: NO PILE (FLAT WEAVE)

HAND-WOVEN IN INDIA



\* All Designs are  
available in a  
18" x 18" and  
24" x 36" sample.

This Collection  
is Only available to  
Authorized Couristan  
Brick-and-Mortar  
Dealers.

## STOCKED SIZES (WITH FRINGE)

5' x 8'

8' x 10'

9' x 12'

10' x 14'

*All Sizes Are Approximate*

*Due to the inherent nature of this handmade product, sizes may vary slightly.*



KALBARRI COLLECTION



4771/3661  
LEYLAN/AMBER-MULTI



4772/5001  
DEZ/TURQUOISE-MULTI



4774/5011  
FARAH/LAPIS-MULTI



4775/3652  
ROXANA/RUBY-MULTI



4773/3526  
TAJAN/GARNET-MULTI





LOTUS COLLECTION



HAND-TUFTED OF 100% HAND-SPUN NEW ZEALAND WOOL

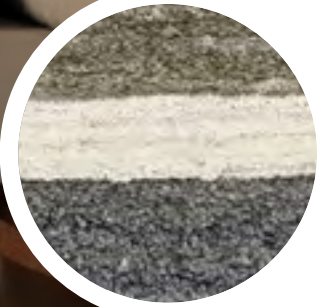
OVERSIZED BLOCK PATTERNS ARE ENHANCED IN AN OVER-TUFTED CONSTRUCTION THAT LENDS TEXTURE AND MAKES A BOLD STATEMENT IN ANY ENVIRONMENT

EARTH TONES GIVE THESE DESIGNS THEIR GROUNDED FEEL, ALLOWING FOR EFFORTLESS PLACEMENT

YARNS ARE SUBTLY SPACE-DYED GIVING THE COLORS SLIGHT VARIATIONS

PILE HEIGHT: .590"

HAND-TUFTED IN INDIA



\* All Designs are available in a 18" x 18" and 24" x 36" sample.

This Collection is Only available to Authorized Couristan Brick-and-Mortar Dealers.

STOCKED SIZES

5' x 8'

8' x 10'

9' x 12'

All Sizes Are Approximate

Due to the inherent nature of this handmade product, sizes may vary slightly.



LOTUS COLLECTION



8221/2011  
ENLIGHTENMENT/OBSIDIAN



8221/3123  
ENLIGHTENMENT/DRIFTWOOD



8222/3303  
PRECIPICE/STONE

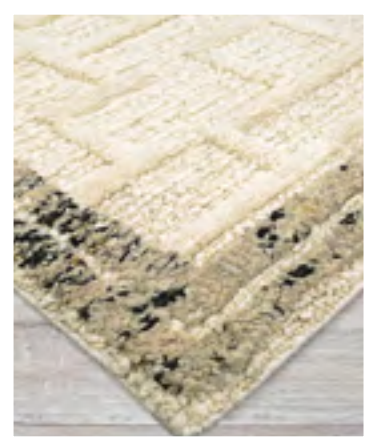


8223/3864  
PAGODA/EARTH





NORWAY COLLECTION



HAND-KNOTTED OF 100% SUSTAINABLE  
UNDYED NATURAL WOOL

KNOTTED IN A LARGER-KNOT CONSTRUCTION WITH  
EACH PIECE FEATURING A HIGH/LOW APPEARANCE,  
UNIQUE TEXTURAL ELEMENTS AND A NUBBY FINISH  
FOR ADDED DEPTH AND DIMENSION

MINIMALIST DESIGNS ARE CREATED IN A  
TONE-ON-TONE PALETTE, ALLOWING THE BEAUTY OF  
THESE HANDMADE PIECES TO SHINE THROUGH

PILE HEIGHT: UP TO .5"

HAND-KNOTTED IN INDIA



\* All Designs are  
available in a  
18"x18" sample.

This Collection  
is Only available to  
Authorized Couristan  
Brick-and-Mortar  
Dealers.

STOCKED SIZES

5'6" x 8'6"

7'6" x 9'6"

8'6" x 11'6"

9'6" x 12'6"

All Sizes Are Approximate

Due to the inherent nature of this handmade product, sizes may vary slightly.



# NORWAY COLLECTION



6320/8001  
ISTRA/NORDIC WHITE



6321/2822  
BASTION/OATMEAL



6323/2822  
STAVERN/OATMEAL



6324/2822  
YARROW/OATMEAL



6322/8001  
SONJA/NORDIC WHITE





SIMONE COLLECTION



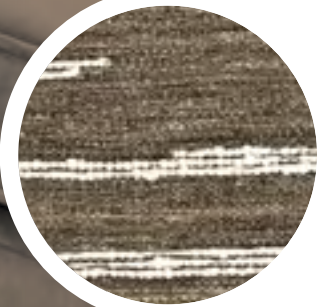
HAND-WOVEN OF 100% WOOL

WOVEN USING A DHURRIE CONSTRUCTION, THESE AREA RUGS WERE DESIGNED TO EMULATE A KILIM WEAVE WITH A CASUAL FEEL

DESIGNS ARE SIMPLE LINEAR AND ABSTRACT PATTERNS, HIGHLIGHTING THE BEAUTY OF THE WEAVE

PILE HEIGHT: ZERO PILE

HAND-WOVEN IN INDIA



\* All Designs are available in a 18" x 18" and 24" x 36" sample.

This Collection is Only available to Authorized Couristan Brick-and-Mortar Dealers.

STOCKED SIZES

5' x 8'

8' x 10'

9' x 12'

10' x 14'

*All Sizes Are Approximate*

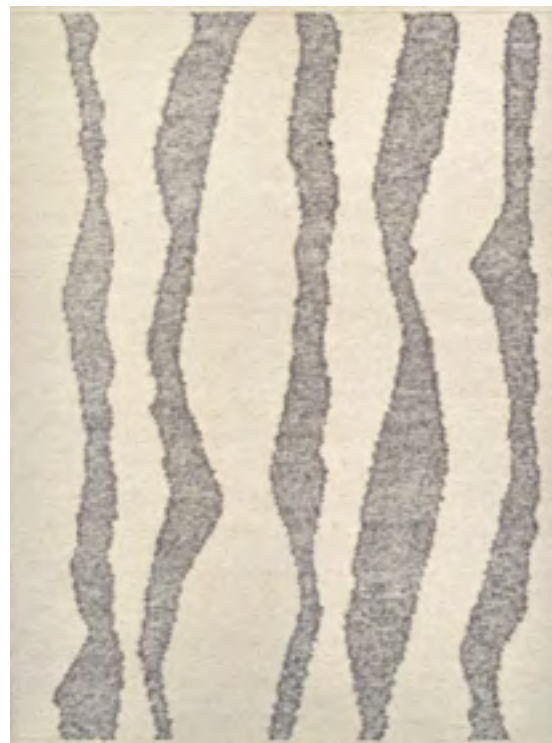
*Due to the inherent nature of this handmade product, sizes may vary slightly.*



# SIMONE COLLECTION



6114/2031  
KARINA/CHOCOLATE



6115/2564  
LYRA/CREAM-MOCHA

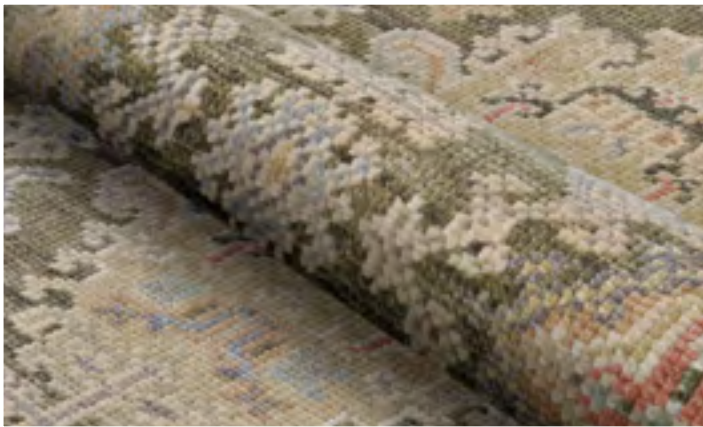
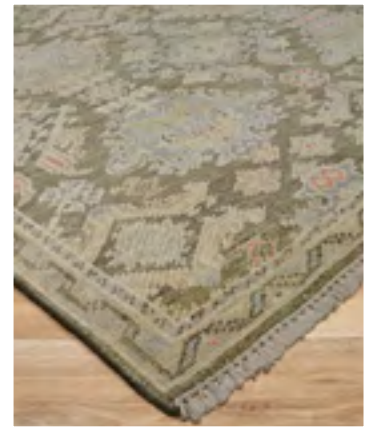


6116/6402  
VELA/MOCHA





UTOPIA COLLECTION



HAND-KNOTTED OF 100% WOOL WITH FRINGED EDGES

INSPIRED BY THE CENTURIES-OLD DESIGNS THAT CAME BEFORE THEM, UTOPIA IS AN ODE TO YESTERDAY WITH A NOD TO TODAY

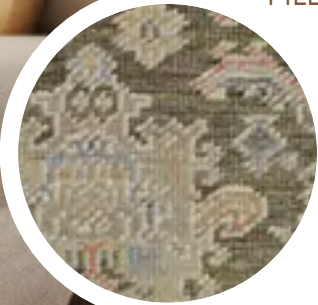
TRADITIONAL DESIGNS ARE GIVEN A MODERN TWIST IN COLORS THAT ECHO OF-THE-MOMENT AESTHETICS IN RICH PINKS, TURQUOISE, GOLD AND GREEN

MOTIFS ARE ROOTED IN HISTORY, BUT ARE OVERSIZED AND WITHOUT REPEAT, LENDING A PUNK EDGE TO EACH

PILE HEIGHT: .078" • HAND - KNOTTED IN INDIA

\* All Designs are available in a 18" x 18" and 24" x 36" sample.

This Collection is Only available to Authorized Couristan Brick-and-Mortar Dealers.



STOCKED SIZES (WITH FRINGE)

5'6" x 8'6"

7'6" x 9'6"

8'6" x 11'6"

9'6" x 13'6"

All Sizes Are Approximate

Due to the inherent nature of this handmade product, sizes may vary slightly.



# UTOPIA COLLECTION



UT01/1003  
JUNO/SILVER MULTI



UT02/3001  
VESTA/NAVY



UT02/4002  
VESTA/OLIVE

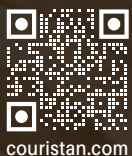






TWO EXECUTIVE DRIVE, FORT LEE, NEW JERSEY 07024 • 800.223.6186 • [COURISTAN.COM](http://COURISTAN.COM)

Wall-To-Wall Carpet • Area Rugs • Roll Runners • Custom Rugs



[couristan.com](http://couristan.com)

MAY 2025