

THE GOOD LIFE



GLOBAL INSPIRED HAND-KNOTTED COLLECTIONS

WHEN WORLDS OF FASHION COLLIDE...

Rich texture, spicy hues and exotic patterns-Couristan brings international influence to its assortment with a dramatic array of floor covering options that speak to today's globe-trotting trendsetters. Inspired by the simple beauty of things like an African safari landscape, the vibrantly colored foods of a Mediterranean dish or the intricately detailed fabrics found in an Indian bazaar, all of the area rugs featured in this brochure showcase the enticing allure of fabulous, far-away places. Creating a truly unique look that combines chic sophistication with charming rustic elements, the distinctive style of these opulent area rugs is ideal for interiors with an eclectic theme. Paired with distressed wood or modern, sleek furniture, ambient lighting and personal treasures from your own around-the-world travels, Couristan has the ultimate selection of floor fashions for the Global Glamour enthusiast.

Featuring time-honored, hand-knotted constructions, all five collections highlighted in this brochure are made with luxurious natural materials like wool, bamboo, viscose and linen. Each a true work of art, these investment pieces boast artisan-crafted details and textured patterns played out in a passionate color palette of saturated tones, like Burnished Rust, Sapphire, Olive, Golden Curry, Red Miso and Sage.

From ornate Persian prints to calming Asian motifs, Couristan has a world of choices to help you design your own exotic escape.

COVER

Setting: RETROGRADE 3999/6000 Nova/Sapphire-Ivory
Top Left: RETROGRADE 3989/5000 Gamma/Beige-Tan
Bottom Right: SAGANO 8841/0841 Belachan/Chocolate-Tan

TABLE OF CONTENTS

Casbah	1-3
Madera	4-6
Retrograde	7-10
Sagano	11-14
Tenali	15-18

The Area Rugs Featured in this Brochure May be Special Ordered in Custom Sizes. Please Check Size Availability of Each Design Prior to Placing an Order.



Two Executive Drive, Fort Lee, New Jersey 07024

800.223.6186 • couristan.com

CASBAH COLLECTION

Made of 100% Natural Undyed
Wool and Natural Undyed Viscose
Featuring Contemporary-
Casual Motifs
Designs Colored in Neutral
Earth Tones
Approximate Pile Height: .137"
Hand-Knotted in India

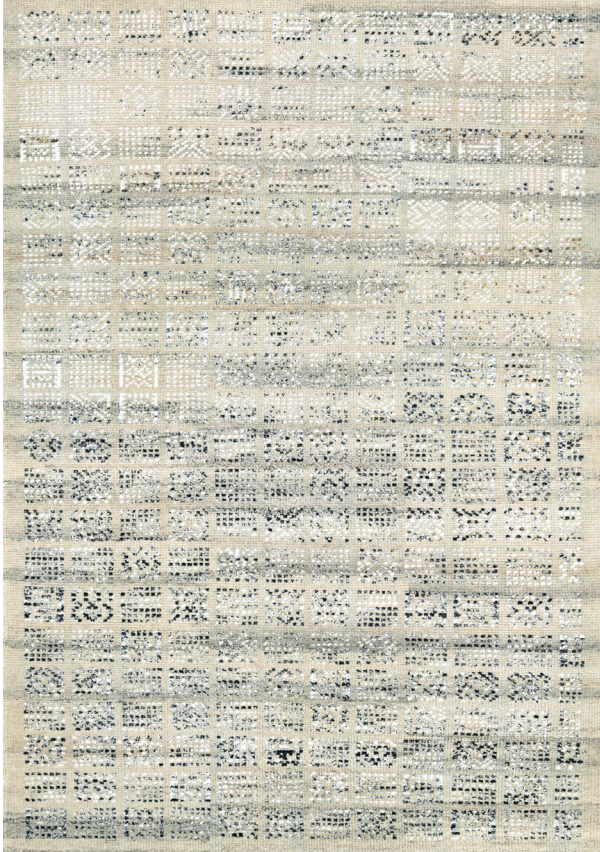
*STOCKED UNFRINGED SIZES

2' x 4'
3'5" x 5'5"
5'6" x 8'
8' x 11'

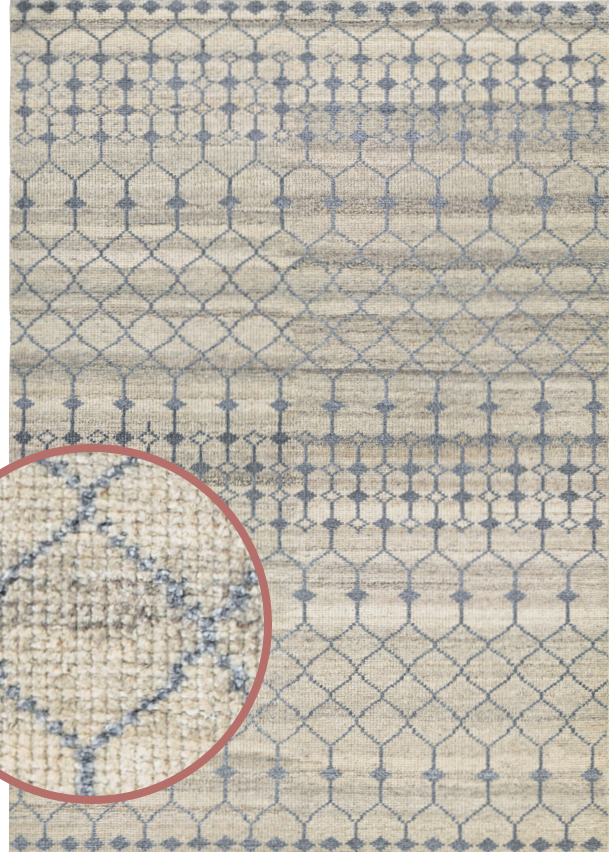
** All Sizes Are Approximate*



CASBAH COLLECTION



5369/0111 Surat/Natural-Black



5371/0105 Akola/Natural-Grey



5372/0103 Purnia/Natural-Cream

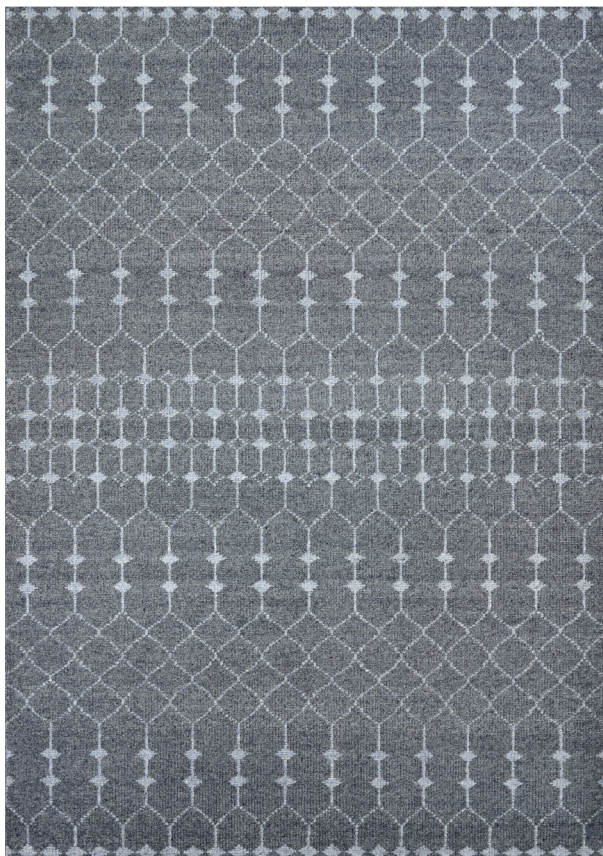


5373/0102 Sikar/Natural-Ivory

CASBAH COLLECTION



5374/0117 Sirsi/Grey-Natural



5375/0105 Aria/Grey-Pewter



5376/0211 Gyro/Natural-Pewter

MADERA COLLECTION



100% Linen
Designs Feature Cut-Pile
Accents Over a Soumac Weave
Soft, Contemporary Geometric
Patterns Blended in a Series of
Fresh, Modern Neutral Colorways
*(Please Note: Brinson Design
Features Space-Dyed Yarns)*
Approximate Pile Height: .196"
Hand-Crafted in India

*STOCKED UNFRINGED SIZES

2' x 4'
3'5" x 5'5"
5'6" x 8'
8' x 11'
9'6" x 13'6"

* All Sizes Are Approximate

MADERA COLLECTION



9756/0502 Dexter/Tan



9756/0900 Dexter/Off White

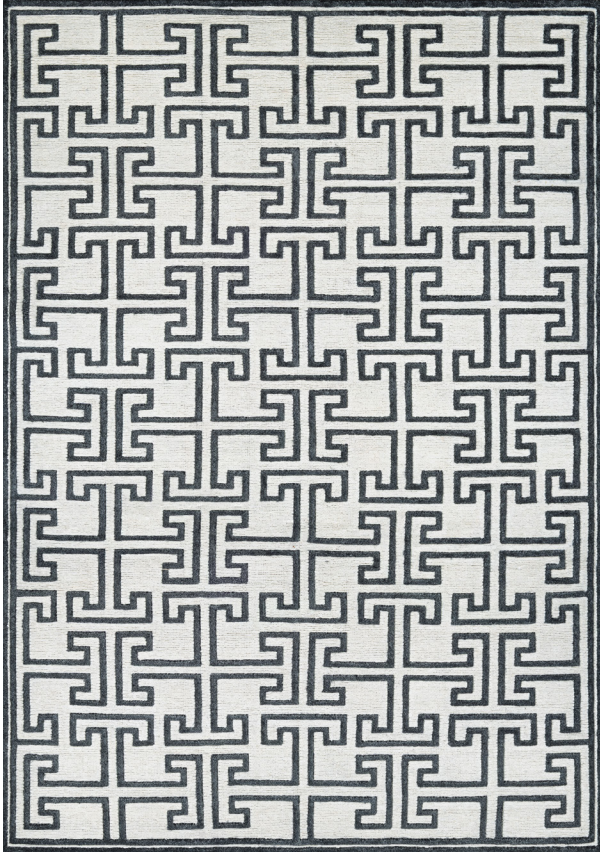


9757/0407 Brinson/Smoke



9757/0545 Brinson/Linen

MADERA COLLECTION



9758/1185 Alden/White-Black



9760/1136 Doretta/Light Blue-White



9762/1057 Langdon/Grey-Silver

RETROGRADE COLLECTION



100% Blended Hand-Spun Wool
Crisp, Versatile Contemporary
Designs in Fresh, Modern Colorways
Approximate Pile Height: .157"
Hand-Knotted in India

*STOCKED UNFRINGED SIZES

2' x 4'
3'5" x 5'5"
5'6" x 8'
8' x 11'
9'6" x 13'6"

** All Sizes Are Approximate*

RETROGRADE COLLECTION



3959/7000 Nebula/Ivory-Light Blue



3988/4000 Galaxy/Burgundy-Ivory



3989/5000 Gamma/Beige-Tan



3999/6000 Nova/Sapphire-Ivory



RETROGRADE COLLECTION



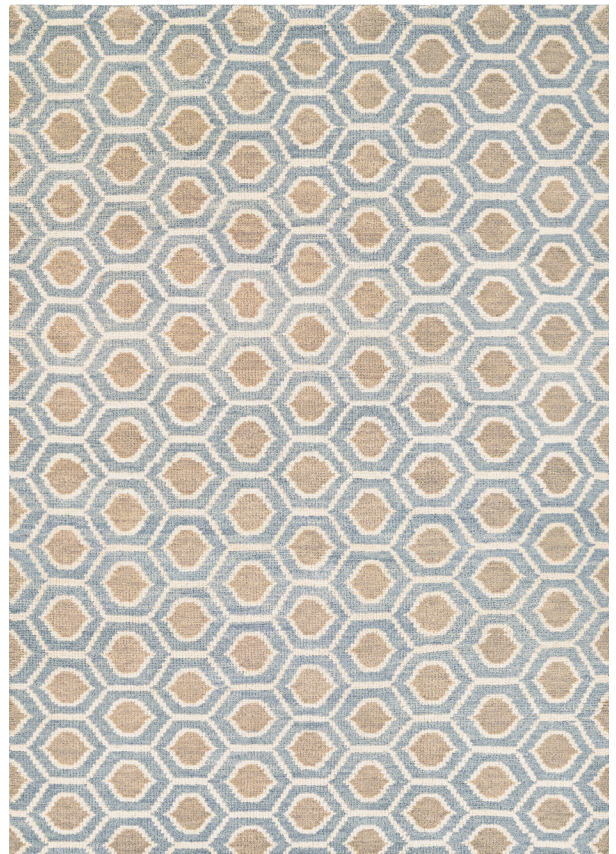
4091/1004 Lightyear/Grey-Dusty Blue



4091/1035 Lightyear/Tan-Camel



4093/1043 Asterism/Camel-Tan



4096/1610 Solar Flare/Dusty Blue-Camel

SAGANO COLLECTION



100% Hand-Spun Bamboo
Fashion Forward Contemporary
Designs Featuring a Fresh
Palette of Modern Colorways
Indo-Nepalese Weave
Approximate Pile Height: .157"
Hand-Knotted in India

*STOCKED UNFRINGED SIZES

2' x 4'
3'5" x 5'5"
5'6" x 8'
8' x 11'
9'6" x 13'6"

** All Sizes Are Approximate*

SAGANO COLLECTION



8833/0833 Mystic Haze/Azure



8841/0841 Belachan/Chocolate-Tan



8845/0845 Zodiac/Ivory-Lilac



8865/0654 Keiko/Grey-Cream

SAGANO COLLECTION



8877/1112 Bauble/Dusty Blue-Ivory



8879/0090 Muscle Shell/Pearl-Multi



8890/0083 Faux Impressions/Azure-Multi



8895/0012 Hidden Forest/Pearl-Slate



TENALI COLLECTION



100% New Zealand Wool
Washed, Traditional Patterns
with a Modern Twist
Featuring Designs in a Cool
Color Palette
Approximate Pile Height: .157"
Hand-Knotted in India

*STOCKED FRINGED SIZES

2' x 4'
5'6" x 8'9"
8' x 11'3"
9'6" x 13'9"
2'3" x 8'3" Runner

** All Sizes Are Approximate*

TENALI COLLECTION



6112/0020 Bijnor/Slate



6118/0018 Korba/Cream



6277/0023 Latur/Dusty Blue



6278/0027 Hapur/Steel Blue

TENALI COLLECTION



6286/0261 Sanduru/Ivory



6294/2000 Chahar Mahal/Sapphire

TENALI COLLECTION



6295/1800 Azeri/Rust-Sapphire



6297/1400 Malayer/Grey



6397/0400 Floral Arabesque/Sage Green



6584/0430 Akstafa/Opal-Rust



PULSE PRODUCT PORTFOLIO



Pub.
September
2016

TWO EXECUTIVE DRIVE, FORT LEE, NEW JERSEY 07024 • 800.223.6186 • COURISTAN.COM

WALL-TO-WALL CARPET • AREA RUGS • ROLL RUNNERS • CUSTOM CARPET

