



creations™  
by COURISTAN®



**COURISTAN®**  
The foundation of any great room.



MENDOCINO - CBH6/0001 - BEIGE  
FEATURED ON PAGE 54

# TABLE OF CONTENTS



	<b>Page</b>
Abruzzo	7
Aisling	8
Ansel	9
Antigua	10
Augusta Floral	11
Bainbridge Trellis	12
Baktiari	13
Bay Head	14
Benson	15
Bonaire	16
Calistoga	17
Cape May	18
Cape Town Collection	19
Catalina	20
Celestial	21
Charisma Collection - <i>Antique Damask</i>	22
Charisma Collection - <i>Jacobean Vine</i>	23
Cooper Island	24
Curacao	25
Dakota	26
Dominica	27
Firenze	28
Gabrielle	29
Ginger Island	30
Griffin	31
Heavenly	32
Hudson Weaves Collection - <i>Bedford</i>	33
Hudson Weaves Collection - <i>Davenport</i>	34
Hudson Weaves Collection - <i>Hancock</i>	35
Hudson Weaves Collection - <i>Nantucket</i>	36
Hudson Weaves Collection - <i>Sullivan</i>	37

# TABLE OF CONTENTS



	Page
Kalani	38
Killington	39
Kimba	40
Kona	41
La Scala	42
Lakely	43
Lanai	44
Lennon	45
Maeve	46
Malia	47
Marina Collection - <i>Capri</i>	48
Marina Collection - <i>Ibiza</i>	49
Marina Collection - <i>Majorca</i>	50
Marina Collection - <i>St. Tropez</i>	51
Marina Cay	52
Martinique	53
Mendocino	54
Montpellier	55
Murano	56
Nala	57
Nicole	58
Palladino Collection - <i>Arezzo</i>	59
Palladino Collection - <i>Basilica</i>	60
Palladino Collection - <i>Genoa</i>	61
Palladino Collection - <i>Sorano</i>	62
Palos Verdes	63
Parkville	64
Pelican Island	65
Persian Bidjar	66

# TABLE OF CONTENTS



	<b>Page</b>
Persian Garden	67
Persian Isfahan	68
Raelyn	69
Riverstone	70
Royal Tartan	71
Santa Barbara	72
Santa Clarita	73
Santa Cruz	74
Santa Maria	75
Santa Monica	76
Santa Rosa	77
Sausalito	78
Scroll	79
Sea Bright	80
St. Croix	81
St. Kitts	82
St. Lucia	83
Sunrise	84
Telluride	85
Thousand Oaks	86
Tortola	87
Toscana	88
Venezia	89
Vienna	90
Virgin Gorda	91
Vivar	92
Wild Plains Collection - <i>Nairobi</i>	93
Wild Plains Collection - <i>Namibia</i>	94
Wild Plains Collection - <i>Uganda</i>	95



*Designed specifically for today's fashion-seeking and budget-conscious decisions-makers, Creations by Couristan™ is a lifestyle residential carpet driven brand, which brings style and design to the mass market. As the brand name Creations by Couristan™ implies, this is an innovative brand that creatively focuses on pattern and color while using affordable materials such as our exclusive heat-set Courtron™ polypropylene synthetic fiber. Offering over 50 different products, hundreds of colorways, and a variety of styles ranging from traditional to trend-setting transitional and today's popular casual looks, Creations by Couristan™ has created today's most popular styles to suit today's spontaneous lifestyles. This product assortment offering consists of, but is not limited to tufted textured wools, heat-set polypropylene face-to-face Wiltons, branded nylon loop and cut / loop patterned prints and flatwoven polypropylene indoor/outdoor carpets.*

# ABRUZZO

## SPECIFICATIONS

### PILE

100% Heat-Set  
Courtron™ Polypropylene

### WEAVE

Face-to-Face Woven Wilton

### PATTERN REPEAT

3.87" W x 4.37" L  
(Straight Match)

### WIDTH

13'2" (4 Meters)



**CBF5/0001**  
Camel



**CBF5/0002**  
Silver



**CBF5/0003**  
Midnight



**CBF5/0004**  
Cocoa



**CBF5/0005**  
Burgundy



**CBF5/0008**  
Wine

# AISLING

SPECIFICATIONS

**PILE**  
100% Heat-Set  
Courtron™ Polypropylene

**WEAVE**  
Face-to-Face Woven Wilton  
Featuring One Million  
Points Per Square Meter

**PATTERN REPEAT**  
22" W x 30.75" L  
(Straight Match)

**WIDTH**  
13'2" (4 Meters)



**CBF0/0001**  
Midnight



**CBF0/0002** ■  
Slate



**CBF0/0003** ■  
Mushroom



**CBF0/0004**  
Sand

■ Available in Coordinating Area Rugs ■ Available in Coordinating 26" Wide Roll Runners ■ Available in Coordinating 31" Wide Roll Runners ■ Available in Coordinating Special Shapes



# ANSEL

## SPECIFICATIONS

### PILE

100% Heat-Set  
Courtron™ Polypropylene

### WEAVE

Face-to-Face Woven Wilton  
Featuring One Million  
Points Per Square Meter

### PATTERN REPEAT

19.68" W x 19.68" L  
(Straight Match)

### WIDTH

13'2" (4 Meters)



**CBK0/0001** ■ ■  
Seafoam



**CBK0/0002** ■ ■  
Dew



**CBK0/0003** ■ ■  
Platinum



**CBK0/0004** ■ ■  
Latté

■ Available in Coordinating Area Rugs ■ Available in Coordinating 26" Wide Roll Runners ■ Available in Coordinating 31" Wide Roll Runners ■ Available in Coordinating Special Shapes

# ANTIGUA

INDOOR/  
OUTDOOR  
USE

SPECIFICATIONS

PILE  
100% Courtron™  
Polypropylene

WEAVE  
Structured Flatwoven

PATTERN REPEAT  
No Repeat

WIDTH  
13'2" (4 Meters)



**CBD3/0001**  
Dune



**CBD3/0002**  
Bronze



**CBD3/0003**  
Pewter



**CBD3/0004**  
Cobblestone



**CBD3/0005**  
Frost



**CBD3/0008**  
Slate

■ Available in Coordinating Area Rugs ■ Available in Coordinating 26" Wide Roll Runners ■ Available in Coordinating 31" Wide Roll Runners ■ Available in Coordinating Special Shapes

# AUGUSTA FLORAL

SPECIFICATIONS

PILE

100% Heat-Set  
Courtron™ Polypropylene

WEAVE

Face-to-Face Woven Wilton

PATTERN REPEAT

19.68" W x 19.68" L  
(Straight Match)

WIDTH

13'2" (4 Meters)



**CB43/0001** ■ ■  
Ecru



**CB43/0002** ■ ■  
Ruby



**CB43/0003** ■ ■  
Midnight

■ Available in Coordinating Area Rugs ■ Available in Coordinating 26" Wide Roll Runners ■ Available in Coordinating 31" Wide Roll Runners ■ Available in Coordinating Special Shapes

# BAINBRIDGE TRELLIS

SPECIFICATIONS

## PILE

100% Heat-Set  
Courtron™ Polypropylene

## WEAVE

Face-to-Face Woven Wilton

## PATTERN REPEAT

10.47" W x 10.47" L  
(Straight Match)

## WIDTH

13'2" (4 Meters)



**CB64/0001** ■ ■  
Ecru



**CB64/0002** ■ ■  
Ruby



**CB64/0003** ■ ■  
Midnight

■ Available in Coordinating Area Rugs ■ Available in Coordinating 26" Wide Roll Runners ■ Available in Coordinating 31" Wide Roll Runners ■ Available in Coordinating Special Shapes

# BAKTIARI

## SPECIFICATIONS

### PILE

100% Heat-Set  
Courtron™ Polypropylene

### WEAVE

Face-to-Face Woven Wilton  
Featuring One Million  
Points Per Square Meter

### PATTERN REPEAT

39.37" W x 39.37" L  
(Straight Match)

### WIDTH

13'2" (4 Meters)



**CB32/4884** ■ ■  
Midnight

# BAY HEAD

INDOOR/  
OUTDOOR  
USE

SPECIFICATIONS

PILE

100% Courtron™  
Polypropylene

WEAVE

Structured Flatwoven

PATTERN REPEAT

1.96" W x 1.81" L  
(Straight Match)

WIDTH

12'6"



**CBK6/0001**  
Sand Dollar



**CBK6/0002**  
Dune



**CBK6/0003**  
Driftwood



**CBK6/0004**  
Sea Mist



**CBK6/0005**  
Starry Sky

■ Available in Coordinating Area Rugs ■ Available in Coordinating 26" Wide Roll Runners ■ Available in Coordinating 31" Wide Roll Runners ■ Available in Coordinating Special Shapes

# BENSON

## SPECIFICATIONS

PILE

100% Pure Wool

WEAVE

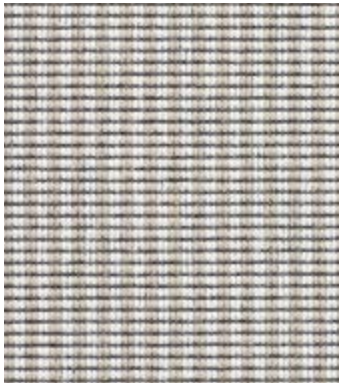
Flatwoven

PATTERN REPEAT

.62" W x .18" L

WIDTH

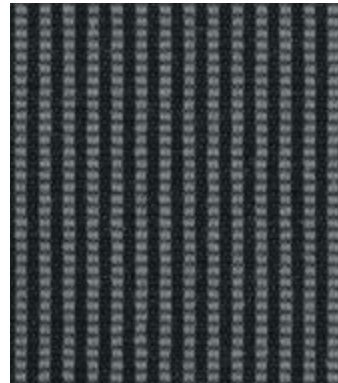
13'2" (4 Meters)



**CBG4/0001**  
Beige



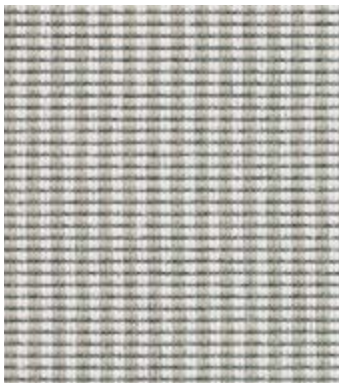
**CBG4/0002**  
Chocolate



**CBG4/0003**  
Charcoal



**CBG4/0004**  
Taupe



**CBG4/0005**  
Linen

# BONAIRE

INDOOR/  
OUTDOOR  
USE

SPECIFICATIONS

PILE  
100% Courtron™  
Polypropylene

WEAVE  
Structured Flatwoven

PATTERN REPEAT  
No Repeat

WIDTH  
13'2" (4 Meters)



**CBD4/0001**  
Dune



**CBD4/0002**  
Bronze



**CBD4/0003**  
Pewter



**CBD4/0004**  
Cobblestone



**CBD4/0005**  
Frost



**CBD4/0008**  
Slate

■ Available in Coordinating Area Rugs ■ Available in Coordinating 26" Wide Roll Runners ■ Available in Coordinating 31" Wide Roll Runners ■ Available in Coordinating Special Shapes



# CALISTOGA

## SPECIFICATIONS

PILE  
100% Nylon

CONSTRUCTION  
Tufted Cut-Pile Print

PATTERN REPEAT  
13.11" W x 11.18" L  
(Straight Match)

WIDTH  
13'2" (4 Meters)



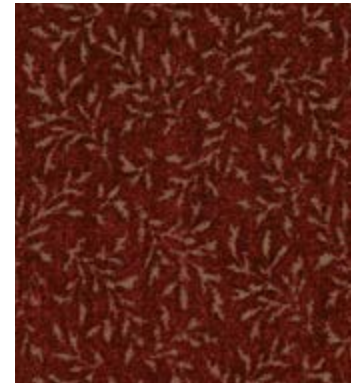
**CBJ0/0001**  
Grey



**CBJ0/0002**  
Soft Grey



**CBJ0/0003**  
Chocolate



**CBJ0/0004**  
Merlot



**CBJ0/0005**  
Midnight



**CBJ0/0006**  
Storm



**CBJ0/0007**  
Toffee

■ Available in Coordinating Area Rugs ■ Available in Coordinating 26" Wide Roll Runners ■ Available in Coordinating 31" Wide Roll Runners ■ Available in Coordinating Special Shapes

# CAPE MAY

INDOOR/  
OUTDOOR  
USE

SPECIFICATIONS

PILE

100% Courtron™  
Polypropylene

WEAVE

Structured Flatwoven

PATTERN REPEAT

3.54" W x 4.17" L  
(Straight Match)

WIDTH

12'6"



**CBK5/0001**  
Sand Dollar



**CBK5/0002**  
Dune



**CBK5/0003**  
Driftwood



**CBK5/0004**  
Sea Mist



**CBK5/0005**  
Starry Sky

■ Available in Coordinating Area Rugs ■ Available in Coordinating 26" Wide Roll Runners ■ Available in Coordinating 31" Wide Roll Runners ■ Available in Coordinating Special Shapes

# CAPE TOWN

COLLECTION

SPECIFICATIONS

PILE

100% Nylon

CONSTRUCTION

Tufted Cut-Pile Print

PATTERN REPEAT

*Cheetah: 25.98" W x 19.68"L  
(Straight Match)*

*Antelope: 25.98" W x 37.80"L  
(Straight Match)*

*Leopard: 39.37" W x 35.83"L  
(Half-Drop Match)*

*Alligator: 19.68" W x 35.83"L  
(Straight Match)*

*Zebra: 25.98" W x 26.38"L  
(Half-Drop Match)*

*Brown Solid: No Repeat*

*Black Solid: No Repeat*

WIDTH

13'2" (4 Meters)



**CB79/0001** ■ ■  
Cheetah



**CB79/0002** ■ ■  
Antelope



**CB79/0003** ■ ■  
Leopard



**CB79/0004** ■ ■  
Alligator



**CB79/0005** ■ ■  
Zebra



**CB79/0006**  
Brown Solid



**CB79/0007**  
Black Solid

■ Available in Coordinating Area Rugs ■ Available in Coordinating 26" Wide Roll Runners ■ Available in Coordinating 31" Wide Roll Runners ■ Available in Coordinating Special Shapes

# CATALINA

## SPECIFICATIONS

PILE  
100% Nylon

CONSTRUCTION  
Tufted Cut-Pile Print

PATTERN REPEAT  
13.11" W x 12.44" L  
(Straight Match)

WIDTH  
13'2" (4 Meters)



**CB10/0001**  
Grey



**CB10/0002**  
Latté



**CB10/0003**  
Chocolate



**CB10/0004**  
Cappuccino

# CELESTIAL

SPECIFICATIONS

PILE

100% Heat-Set  
Courtron™ Polypropylene

WEAVE

Face-to-Face Woven Wilton

PATTERN REPEAT

19.5" W x 19.5" L  
(Straight Match)

WIDTH

13'2" (4 Meters)



**CB27/0001**  
Antique Linen



**CB27/0002**  
Gold



**CB27/0003**  
Crimson



**CB27/0004**  
Ebony

■ Available in Coordinating Area Rugs ■ Available in Coordinating 26" Wide Roll Runners ■ Available in Coordinating 31" Wide Roll Runners ■ Available in Coordinating Special Shapes

# CHARISMA

COLLECTION

## ANTIQUÉ DAMASK

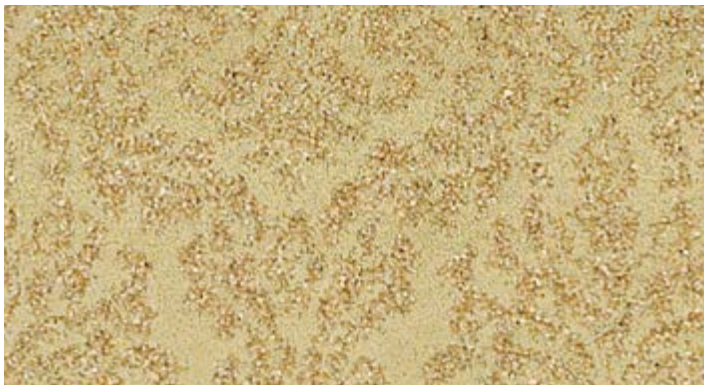
SPECIFICATIONS

PILE  
100% Courtron™  
Polypropylene

WEAVE  
Face-to-Face Woven Wilton  
Featuring One Million  
Points Per Square Meter

PATTERN REPEAT  
6.5" W x 9.5" L  
(Straight Match)

WIDTH  
13'2" (4 Meters)



**CB69/0001**  
Ivory-Beige



**CB69/0002**  
Beige



**CB69/0003**  
Sage Green

# CHARISMA

COLLECTION

## JACOBEOAN VINE

SPECIFICATIONS

PILE

100% Courtron™  
Polypropylene

WEAVE

Face-to-Face Woven Wilton  
Featuring One Million  
Points Per Square Meter

PATTERN REPEAT

19.75" W x 19.75" L  
(Straight Match)

WIDTH

13'2" (4 Meters)



**CB68/0001**  
Ivory-Beige



**CB68/0002**  
Beige



**CB68/0003**  
Sage Green

# COOPER ISLAND

INDOOR/  
OUTDOOR  
USE

SPECIFICATIONS

PILE

100% Courtron™  
Polypropylene

WEAVE

Structured Flatwoven

PATTERN REPEAT

.24" W x .35" L  
(Half-Drop Match)

WIDTH

13'2" (4 Meters)



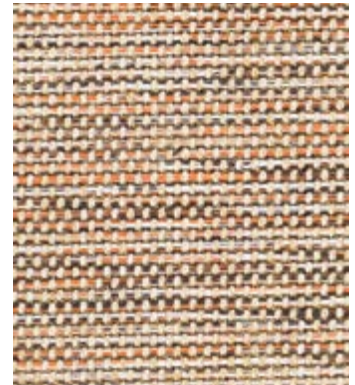
**CBJ7/1001**  
Gunmetal



**CBJ7/1002**  
Silver



**CBJ7/1003**  
Ash



**CBJ7/1004**  
Cinnamon



**CBJ7/1005**  
Bronze

■ Available in Coordinating Area Rugs ■ Available in Coordinating 26" Wide Roll Runners ■ Available in Coordinating 31" Wide Roll Runners ■ Available in Coordinating Special Shapes



# CURACAO

INDOOR/  
OUTDOOR  
USE

SPECIFICATIONS

PILE

100% Courtron™  
Polypropylene

WEAVE

Structured Flatwoven

PATTERN REPEAT

8.27" W x 7.48" L  
(Straight Match)

WIDTH

13'2" (4 Meters)



**CBF2/0001**  
Dune



**CBF2/0002**  
Bronze



**CBF2/0003**  
Pewter



**CBF2/0004**  
Cobblestone



**CBF2/0005**  
Frost



**CBF2/0006**  
Charcoal



**CBF2/0007**  
Ebony



**CBF2/0008**  
Slate

■ Available in Coordinating Area Rugs ■ Available in Coordinating 26" Wide Roll Runners ■ Available in Coordinating 31" Wide Roll Runners ■ Available in Coordinating Special Shapes

# DAKOTA

SPECIFICATIONS

PILE

100% Heat-Set  
Courtron™ Polypropylene

WEAVE

Face-to-Face Woven Wilton  
Featuring One Million  
Points Per Square Meter

PATTERN REPEAT

39.37" W x 38.42" L  
(Straight Match)

WIDTH

13'2" (4 Meters)



**CBK1/0001** ■ ■  
Seafoam



**CBK1/0002** ■ ■  
Tusk



**CBK1/0003** ■ ■  
Platinum



**CBK1/0004** ■ ■  
Flint

■ Available in Coordinating Area Rugs ■ Available in Coordinating 26" Wide Roll Runners ■ Available in Coordinating 31" Wide Roll Runners ■ Available in Coordinating Special Shapes

# DOMINICA

INDOOR/  
OUTDOOR  
USE

SPECIFICATIONS

PILE

100% Courtron™  
Polypropylene

WEAVE

Structured Flatwoven

PATTERN REPEAT

.70" W x 1" L  
(Straight Match)

WIDTH

13'2" (4 Meters)



**CBE6/0001**  
Dune



**CBE6/0002**  
Bronze



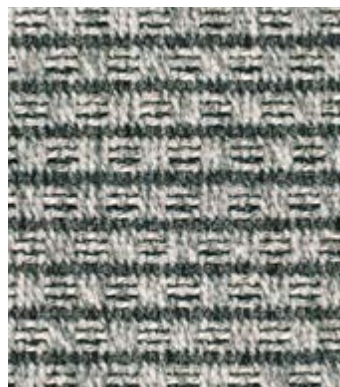
**CBE6/0003**  
Pewter



**CBE6/0004**  
Cobblestone



**CBE6/0005**  
Frost



**CBE6/0008**  
Slate

# FIRENZE

## SPECIFICATIONS

### PILE

100% Heat-Set  
Courtron™ Polypropylene

### WEAVE

Face-to-Face Woven Wilton

### PATTERN REPEAT

3.25" W x 3.25" L  
(Straight Match)

### WIDTH

13'2" (4 Meters)



**CBF6/0001**  
Camel



**CBF6/0002**  
Silver



**CBF6/0003**  
Midnight



**CBF6/0004**  
Cocoa



**CBF6/0005**  
Burgundy



**CBF6/0006**  
Smoke Blue

# GABRIELLE

## SPECIFICATIONS

**PILE**  
100% Nylon

**CONSTRUCTION**  
Tufted Loop Pile Print

**PATTERN REPEAT**  
6.5" W x 6.5" L  
(Straight Match)

**WIDTH**  
13'2" (4 Meters)



**CB37/0080**  
Camel on White



**CB37/0083**  
Evergreen on White



**CB37/0085**  
Dresden Blue on White



**CB37/0091**  
Celadon



**CB37/0093**  
Midnight



**CB37/0094**  
Dresden Blue

# GINGER ISLAND

INDOOR/  
OUTDOOR  
USE

SPECIFICATIONS

PILE

100% Courtron™  
Polypropylene

WEAVE

Structured Flatwoven

PATTERN REPEAT

.49" W x .54" L  
(Straight Match)

WIDTH

13'2" (4 Meters)



**CBJ5/1001**  
Gunmetal



**CBJ5/1002**  
Silver



**CBJ5/1003**  
Ash



**CBJ5/1004**  
Cinnamon



**CBJ5/1005**  
Bronze

■ Available in Coordinating Area Rugs ■ Available in Coordinating 26" Wide Roll Runners ■ Available in Coordinating 31" Wide Roll Runners ■ Available in Coordinating Special Shapes

# GRIFFIN

## SPECIFICATIONS

**PILE**  
100% Heat-Set  
Courtron™ Polypropylene

**WEAVE**  
Face-to-Face Woven Wilton  
Featuring One Million  
Points Per Square Meter

**PATTERN REPEAT**  
39.37" W x 39.37" L  
(Straight Match)

**WIDTH**  
13'2" (4 Meters)



**CB23/4832**  
Antique Linen



**CB23/4872** ■  
Crimson



**CB23/4873**  
Tan



**CB23/4879**  
Black



**CB23/4883**  
Sage Green

■ Available in Coordinating Area Rugs ■ Available in Coordinating 26" Wide Roll Runners ■ Available in Coordinating 31" Wide Roll Runners ■ Available in Coordinating Special Shapes

# HEAVENLY

## SPECIFICATIONS

PILE

100% Nylon

CONSTRUCTION

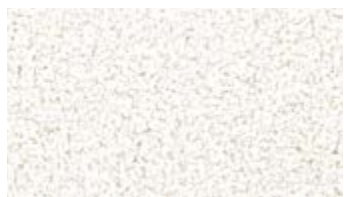
Tufted Cut-Pile

PATTERN REPEAT

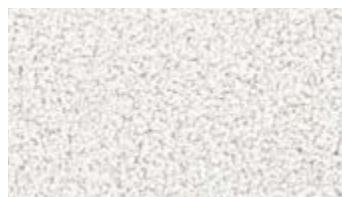
No Repeat

WIDTH

13'2" (4 Meters)



**CBK8/0001**  
Cotton



**CBK8/0002**  
Sea Salt



**CBK8/0003**  
Oat



**CBK8/0004**  
Parchment



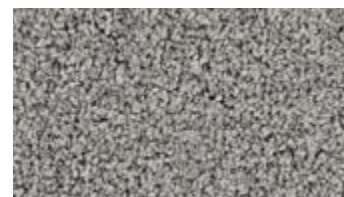
**CBK8/0005**  
Pepper



**CBK8/0006**  
Fog



**CBK8/0007**  
Pacific



**CBK8/0008**  
Flint



**CBK8/0009**  
Mineral



# HUDSON WEAVES

COLLECTION

BEDFORD

SPECIFICATIONS

PILE  
100% Pure Wool

WEAVE  
Structured Flatwoven

PATTERN REPEAT  
4" W x 4.5" L  
(Half-Drop Match)

WIDTH  
13'2" (4 Meters)



**1986/0001**  
Light Olive



**1986/0002**  
Denim



**1986/0003**  
Cranberry Red

■ Available in Coordinating Area Rugs ■ Available in Coordinating 26" Wide Roll Runners ■ Available in Coordinating 31" Wide Roll Runners ■ Available in Coordinating Special Shapes

# HUDSON WEAVES

COLLECTION

DAVENPORT

SPECIFICATIONS

PILE  
100% Pure Wool

WEAVE  
Structured Flatwoven

PATTERN REPEAT  
1.12" W x 1.25" L  
(Half-Drop Match)

WIDTH  
13'2" (4 Meters)



**1987/0001**  
Natural

# HUDSON WEAVES

COLLECTION

HANCOCK

SPECIFICATIONS

PILE

100% Pure Wool

WEAVE

Structured Flatwoven

PATTERN REPEAT

4.75" W x 5" L  
(Half-Drop Match)

WIDTH

13'2" (4 Meters)



**1985/0001**  
Light Olive



**1985/0002**  
Denim



**1985/0003**  
Cranberry Red

■ Available in Coordinating Area Rugs ■ Available in Coordinating 26" Wide Roll Runners ■ Available in Coordinating 31" Wide Roll Runners ■ Available in Coordinating Special Shapes

# HUDSON WEAVES

COLLECTION

NANTUCKET

SPECIFICATIONS

PILE

100% Pure Wool

WEAVE

Structured Flatwoven

PATTERN REPEAT

.18" Wide

WIDTH

13'2" (4 Meters)



**1988/0001**  
Natural

# HUDSON WEAVES

COLLECTION

SULLIVAN

SPECIFICATIONS

PILE

100% Pure Wool

WEAVE

Structured Flatwoven

PATTERN REPEAT

3.75" W x 2.5" L  
(Straight Match)

WIDTH

13'2" (4 Meters)



**1984/0001**  
Natural

# KALANI

INDOOR/  
OUTDOOR  
USE

SPECIFICATIONS

**PILE**  
100% Courtron™  
Polypropylene

**WEAVE**  
Structured Flatwoven

**PATTERN REPEAT**  
2.50" W x 1.13" L  
(Straight Match)

**WIDTH**  
13'2" (4 Meters)



**CBI1/0001**  
Driftwood



**CBI1/0002**  
Teak



**CBI1/0003**  
Palm



**CBI1/0004**  
Rattan



**CBI1/0005**  
Surf



**CBI1/0006**  
Chambray



**CBI1/0007**  
Midnight

■ Available in Coordinating Area Rugs ■ Available in Coordinating 26" Wide Roll Runners ■ Available in Coordinating 31" Wide Roll Runners ■ Available in Coordinating Special Shapes

# KILLINGTON

## SPECIFICATIONS

### PILE

80% Heat-Set  
Courtron™ Polypropylene/  
20% Polyester

### WEAVE

Face-to-Face  
Wilton Woven Shag

### PATTERN REPEAT

No Repeat

### WIDTH

13'2" (4 Meters)



**CBF1/0001**  
Snow



**CBF1/0002**  
Mink



**CBF1/0003**  
Graphite



**CBF1/0005**  
Cocoa

# KIMBA

## SPECIFICATIONS

### PILE

100% Heat-Set  
Courtron™ Polypropylene

### WEAVE

Face-to-Face Woven Wilton

### PATTERN REPEAT

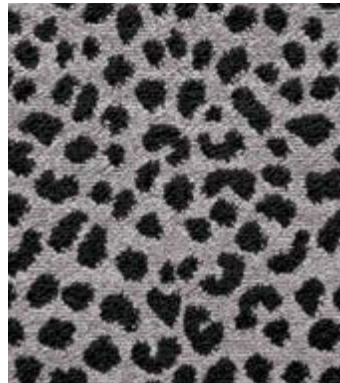
13.12" W x 18.75 L  
(Straight Match)

### WIDTH

13'2" (4 Meters)



**CBE9/0001**  
Sable



**CBE9/0002**  
Graphite



**CBE9/0003**  
Ocean Blue



**CBE9/0004**  
Flannel



**CBE9/0005**  
Camel



# KONA

INDOOR/  
OUTDOOR  
USE

SPECIFICATIONS

PILE

100% Courtron™  
Polypropylene

WEAVE

Structured Flatwoven

PATTERN REPEAT

.25" W x .25" L  
(Straight Match)

WIDTH

13'2" (4 Meters)



**CB13/0001**  
Driftwood



**CB13/0002**  
Teak



**CB13/0003**  
Palm



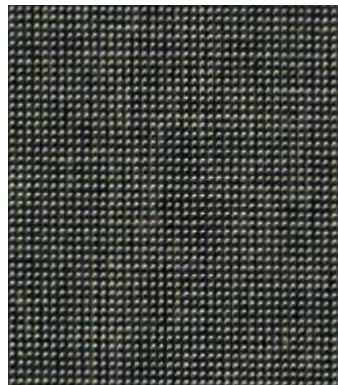
**CB13/0004**  
Rattan



**CB13/0005**  
Surf



**CB13/0006**  
Chambray



**CB13/0007**  
Midnight

■ Available in Coordinating Area Rugs ■ Available in Coordinating 26" Wide Roll Runners ■ Available in Coordinating 31" Wide Roll Runners ■ Available in Coordinating Special Shapes

# LA SCALA

## SPECIFICATIONS

**PILE**  
100% Heat-Set  
Courtron™ Polypropylene

**WEAVE**  
Face-to-Face Woven Wilton  
Featuring A Unique Two  
Color, Two-Ply Twist

**PATTERN REPEAT**  
19.68" W x 19.68" L  
(Half-Drop Match)

**WIDTH**  
13'2" (4 Meters)



**CBB2/0001** ■ ■  
Ivory



**CBB2/0002** ■ ■  
Moss



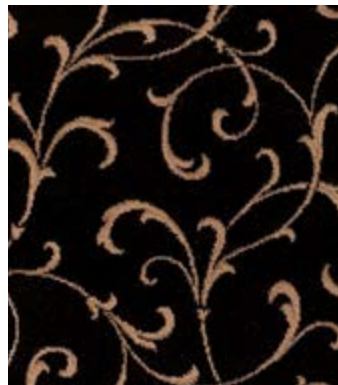
**CBB2/0003**  
Steel Blue



**CBB2/0004** ■ ■  
Saddle



**CBB2/0005** ■ ■  
Chocolate



**CBB2/0006** ■ ■  
Ebony

■ Available in Coordinating Area Rugs ■ Available in Coordinating 26" Wide Roll Runners ■ Available in Coordinating 31" Wide Roll Runners ■ Available in Coordinating Special Shapes

# LAKELY

## SPECIFICATIONS

### PILE

100% Heat-Set  
Courtron™ Polypropylene

### WEAVE

Face-to-Face Woven Wilton  
Featuring One Million  
Points Per Square Meter

### PATTERN REPEAT

31.49" W x 23.62" L  
(Straight Match)

### WIDTH

13'2" (4 Meters)



**CBK2/0001** ■ ■  
Seafoam



**CBK2/0002** ■ ■ ■ ■  
Dew



**CBK2/0003** ■ ■  
Platinum

■ Available in Coordinating Area Rugs ■ Available in Coordinating 26" Wide Roll Runners ■ Available in Coordinating 31" Wide Roll Runners ■ Available in Coordinating Special Shapes

# LANAI

INDOOR/  
OUTDOOR  
USE

SPECIFICATIONS

PILE

100% Courtron™  
Polypropylene

WEAVE

Structured Flatwoven

PATTERN REPEAT

6.50" W x 5" L  
(Half-Drop Match)

WIDTH

13'2" (4 Meters)



**CB14/0001**  
Driftwood



**CB14/0002**  
Teak



**CB14/0003**  
Palm



**CB14/0004**  
Rattan



**CB14/0005**  
Surf



**CB14/0006**  
Chambray



**CB14/0007**  
Midnight

■ Available in Coordinating Area Rugs ■ Available in Coordinating 26" Wide Roll Runners ■ Available in Coordinating 31" Wide Roll Runners ■ Available in Coordinating Special Shapes

# LENNON

SPECIFICATIONS

PILE

100% Pure Wool

CONSTRUCTION

Tufted Loop Pile

PATTERN REPEAT

3.75" Wide

WIDTH

13'2" (4 Meters)



**CBG7/0001**  
Limeade



**CBG7/0002**  
Granite



**CBG7/0003**  
Tabac



**CBG7/0004**  
Varsity



**CBG7/0005**  
Meadow



**CBG7/0006**  
Denim

# MAEVE

## SPECIFICATIONS

### PILE

100% Heat-Set  
Courtron™ Polypropylene

### WEAVE

Face-to-Face Woven Wilton  
Featuring One Million  
Points Per Square Meter

### PATTERN REPEAT

31.49" W x 28.34" L  
(Straight Match)

### WIDTH

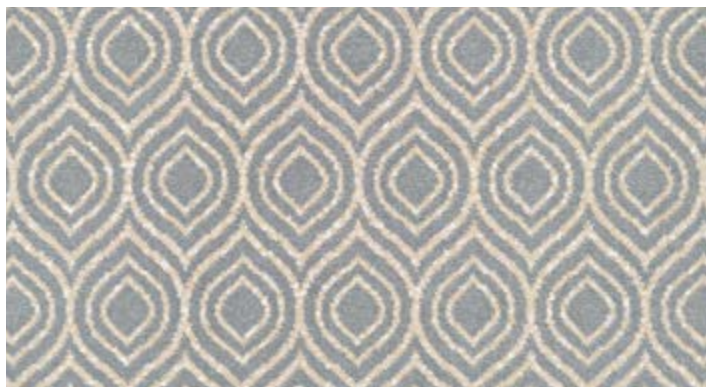
13'2" (4 Meters)



**CBK4/0001** ■ ■  
Seafoam



**CBK4/0002** ■ ■  
Dew



**CBK4/0003** ■ ■  
Platinum



**CBK4/0004** ■ ■  
Cappuccino

■ Available in Coordinating Area Rugs ■ Available in Coordinating 26" Wide Roll Runners ■ Available in Coordinating 31" Wide Roll Runners ■ Available in Coordinating Special Shapes

# MALIA

INDOOR/  
OUTDOOR  
USE

SPECIFICATIONS

PILE

100% Courtron™  
Polypropylene

WEAVE

Structured Flatwoven

PATTERN REPEAT

1.50" W x 2.94" L  
(Straight Match)

WIDTH

13'2" (4 Meters)



**CB12/0001**  
Driftwood



**CB12/0002**  
Teak



**CB12/0003**  
Palm



**CB12/0004**  
Rattan



**CB12/0005**  
Surf



**CB12/0006**  
Chambray



**CB12/0007**  
Midnight

■ Available in Coordinating Area Rugs ■ Available in Coordinating 26" Wide Roll Runners ■ Available in Coordinating 31" Wide Roll Runners ■ Available in Coordinating Special Shapes

# MARINA

COLLECTION

CAPRI

SPECIFICATIONS

PILE

100% Heat-Set  
Courtron™ Polypropylene

WEAVE

Face-to-Face Woven  
Wilton Featuring An  
Excess of One Million  
Points Per Square Meter

PATTERN REPEAT

19.75" W x 14.5" L  
(Half-Drop Match)

WIDTH

13'2" (4 Meters)



**CB12/4001**  
Champagne



**CB12/4002** ■  
Oyster

■ Available in Coordinating Area Rugs ■ Available in Coordinating 26" Wide Roll Runners ■ Available in Coordinating 31" Wide Roll Runners ■ Available in Coordinating Special Shapes



# MARINA

COLLECTION

IBIZA

SPECIFICATIONS

PILE

100% Heat-Set  
Courtron™ Polypropylene

WEAVE

Face-to-Face Woven  
Wilton Featuring An  
Excess of One Million  
Points Per Square Meter

PATTERN REPEAT

9.93" W x 19.87" L  
(Straight Match)

WIDTH

13'2" (4 Meters)



**CB11/4001** ■ ■  
Champagne



**CB11/4002** ■ ■  
Oyster

■ Available in Coordinating Area Rugs ■ Available in Coordinating 26" Wide Roll Runners ■ Available in Coordinating 31" Wide Roll Runners ■ Available in Coordinating Special Shapes

# MARINA

COLLECTION

## MAJORCA

SPECIFICATIONS

**PILE**  
100% Heat-Set  
Courtron™ Polypropylene

**WEAVE**  
Face-to-Face Woven  
Wilton Featuring An  
Excess of One Million  
Points Per Square Meter

**PATTERN REPEAT**  
6.25" W x 8.33" L  
(Half-Drop Match)

**WIDTH**  
13'2" (4 Meters)



**CB91/0001** ■ ■  
Champagne



**CB91/0002** ■ ■  
Oyster



**CB91/0003** ■ ■  
Platinum



**CB91/0004** ■ ■  
Pearl

■ Available in Coordinating Area Rugs ■ Available in Coordinating 26" Wide Roll Runners ■ Available in Coordinating 31" Wide Roll Runners ■ Available in Coordinating Special Shapes

# MARINA

COLLECTION

## ST. TROPEZ

SPECIFICATIONS

PILE

100% Heat-Set  
Courtron™ Polypropylene

WEAVE

Face-to-Face Woven  
Wilton Featuring An  
Excess of One Million  
Points Per Square Meter

PATTERN REPEAT

39.5" W x 32" L  
(Straight Match)

WIDTH

13'2" (4 Meters)



**CB10/4001** ■ ■  
Champagne

# MARINA CAY

INDOOR/  
OUTDOOR  
USE

SPECIFICATIONS

PILE

100% Courtron™  
Polypropylene

WEAVE

Structured Flatwoven

PATTERN REPEAT

2.95" W x 2.83" L  
(Half-Drop Match)

WIDTH

13'2" (4 Meters)



**CBJ4/1001**  
Gunmetal



**CBJ4/1002**  
Silver



**CBJ4/1003**  
Ash



**CBJ4/1004**  
Cinnamon



**CBJ4/1005**  
Bronze

# MARTINIQUE

INDOOR/  
OUTDOOR  
USE

SPECIFICATIONS

PILE  
100% Courtron™  
Polypropylene

WEAVE  
Structured Flatwoven

PATTERN REPEAT  
No Repeat

WIDTH  
13'2" (4 Meters)



**CBD5/0001**  
Dune



**CBD5/0002**  
Bronze



**CBD5/0003**  
Pewter



**CBD5/0004**  
Cobblestone



**CBD5/0005**  
Frost



**CBD5/0008**  
Slate

■ Available in Coordinating Area Rugs ■ Available in Coordinating 26" Wide Roll Runners ■ Available in Coordinating 31" Wide Roll Runners ■ Available in Coordinating Special Shapes

# MENDOCINO

## SPECIFICATIONS

### PILE

100% Premium Nylon –  
Type 6,6

### CONSTRUCTION

Tufted Loop Pile Print

### PATTERN REPEAT

4.25" W x 5" L  
(Straight Match)

### WIDTH

13'2" (4 Meters)



**CBH6/0001**  
Beige



**CBH6/0002**  
Goldenrod



**CBH6/0003**  
Toast



**CBH6/0004**  
Cranberry



**CBH6/0005**  
Silver



**CBH6/0006**  
Khaki



**CBH6/0007**  
Midnight

■ Available in Coordinating Area Rugs ■ Available in Coordinating 26" Wide Roll Runners ■ Available in Coordinating 31" Wide Roll Runners ■ Available in Coordinating Special Shapes

# MONTPELLIER

SPECIFICATIONS

PILE

100% Heat-Set  
Courtron™ Polypropylene

CONSTRUCTION

Tufted Shag

PATTERN REPEAT

No Repeat

WIDTH

13'2" (4 Meters)



**CBE8/0001**  
Sable



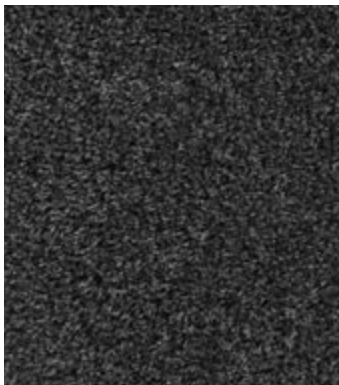
**CBE8/0002**  
Champagne



**CBE8/0003**  
Ivory



**CBE8/0004**  
Dove



**CBE8/0005**  
Slate

# MURANO

## SPECIFICATIONS

### PILE

100% Heat-Set  
Courtron™ Polypropylene

### WEAVE

Face-to-Face Woven  
Wilton Featuring An  
Excess of One Million  
Points Per Square Meter

### PATTERN REPEAT

39.37" W x 33.46" L  
(Straight Match)

### WIDTH

13'2" (4 Meters)



**CB15/0001** ■ ■  
Champagne



**CB15/0002** ■ ■  
Oyster



**CB15/0003** ■ ■  
Pearl



# NALA

## SPECIFICATIONS

### PILE

100% Heat-Set  
Courtron™ Polypropylene

### WEAVE

Face-to-Face Woven Wilton

### PATTERN REPEAT

19.68" W x 15" L  
(Straight Match)

### WIDTH

13'2" (4 Meters)



**CBE1/0001**  
Sable



**CBE1/0002**  
Graphite



**CBE1/0003**  
Ocean Blue



**CBE1/0004**  
Flannel



**CBE1/0005**  
Camel

# NICOLE

## SPECIFICATIONS

**PILE**  
100% Nylon

**CONSTRUCTION**  
Tufted Loop Pile Print

**PATTERN REPEAT**  
1.75" W x 1.75" L  
(Straight Match)

**WIDTH**  
13'2" (4 Meters)



**CB97/0002**  
Yellow/Blue on White



**CB97/0003**  
Evergreen on White



**CB97/0004**  
Camel on White



**CB97/0005**  
Dresden Blue on White



**CB97/0006**  
Chocolate



**CB97/0007**  
Camel



**CB97/0008**  
Dresden Blue



**CB97/0009**  
Midnight



**CB97/0010**  
Celadon



**CB97/0011**  
Evergreen

# PALLADINO

COLLECTION

## AREZZO

SPECIFICATIONS

PILE

100% Heat-Set  
Courtron™ Polypropylene

WEAVE

Face-to-Face Woven Wilton  
Featuring A Unique Two  
Color, Two-Ply Twist

PATTERN REPEAT

13.25" W x 25" L  
(Straight Match)

WIDTH

13'2" (4 Meters)



**CBD6/0001** ■ ■  
Ivory



**CBD6/0002** ■ ■  
Caramel



**CBD6/0003** ■ ■  
Steel Blue



**CBD6/0004** ■ ■  
Ebony

■ Available in Coordinating Area Rugs ■ Available in Coordinating 26" Wide Roll Runners ■ Available in Coordinating 31" Wide Roll Runners ■ Available in Coordinating Special Shapes

# PALLADINO

COLLECTION

## BASILICA

SPECIFICATIONS

### PILE

100% Heat-Set  
Courtron™ Polypropylene

### WEAVE

Face-to-Face Woven Wilton  
Featuring A Unique Two  
Color, Two-Ply Twist

### PATTERN REPEAT

31.50" W x 39.75" L  
(Straight Match)

### WIDTH

13'2" (4 Meters)



**CBD7/0001** ■ ■  
Steel Blue



**CBD7/0002** ■ ■  
Chocolate

■ Available in Coordinating Area Rugs ■ Available in Coordinating 26" Wide Roll Runners ■ Available in Coordinating 31" Wide Roll Runners ■ Available in Coordinating Special Shapes

# PALLADINO

COLLECTION

GENOA

SPECIFICATIONS

PILE

100% Heat-Set  
Courtron™ Polypropylene

WEAVE

Face-to-Face Woven Wilton  
Featuring A Unique Two  
Color, Two-Ply Twist

PATTERN REPEAT

3.94" W x 3.94" L  
(Straight Match)

WIDTH

13'2" (4 Meters)



**CBD8/0001** ■ ■  
Steel Blue



**CBD8/0002** ■ ■  
Chocolate



**CBD8/0003** ■ ■  
Ebony

# PALLADINO

COLLECTION

## SORANO

SPECIFICATIONS

PILE

100% Heat-Set  
Courtron™ Polypropylene

WEAVE

Face-to-Face Woven Wilton  
Featuring A Unique Two  
Color, Two-Ply Twist

PATTERN REPEAT

13.25" W x 25" L  
(Straight Match)

WIDTH

13'2" (4 Meters)



**CBD9/0001** ■ ■  
Caramel



**CBD9/0002** ■ ■  
Steel Blue



**CBD9/0003** ■ ■  
Chocolate



**CBD9/0004** ■ ■  
Ebony

■ Available in Coordinating Area Rugs ■ Available in Coordinating 26" Wide Roll Runners ■ Available in Coordinating 31" Wide Roll Runners ■ Available in Coordinating Special Shapes

# PALOS VERDES

SPECIFICATIONS

**PILE**

100% Premium Nylon –  
Type 6,6

**CONSTRUCTION**

Tufted Loop Pile Print

**PATTERN REPEAT**

6.37" W x 6.5" L  
(Straight Match)

**WIDTH**

13'2" (4 Meters)



**CBH7/0001**  
Beige



**CBH7/0002**  
Taupe



**CBH7/0003**  
Silver



**CBH7/0004**  
Cranberry



**CBH7/0005**  
Midnight



**CBH7/0006**  
Khaki

■ Available in Coordinating Area Rugs ■ Available in Coordinating 26" Wide Roll Runners ■ Available in Coordinating 31" Wide Roll Runners ■ Available in Coordinating Special Shapes

# PARKVILLE

## SPECIFICATIONS

**PILE**

100% Pure Wool

**CONSTRUCTION**

Tufted Loop Pile

**PATTERN REPEAT**

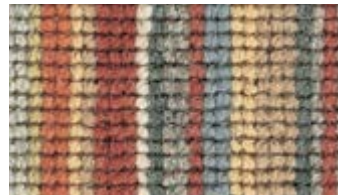
4" Wide

**WIDTH**

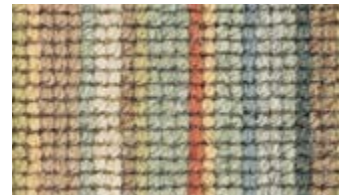
13'2" (4 Meters)



**CB44/0210**  
Quasar



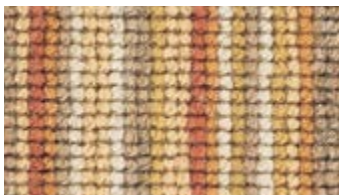
**CB44/0211**  
Northern Lights



**CB44/0212**  
Peacock Plume



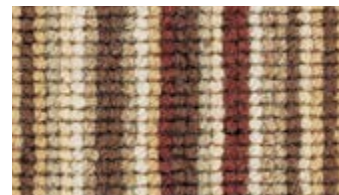
**CB44/0213**  
Pale Coral



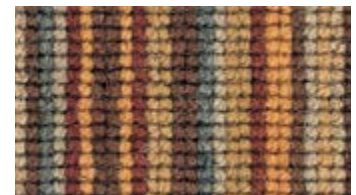
**CB44/0214**  
Kaleidoscope



**CB44/0215**  
Pulsar



**CB44/0216**  
Starry Night



**CB44/0217**  
Harvest Moon



**CB44/0219**  
Twilight



**CB44/0221**  
Moonscape



**CB44/0223**  
Sedona Sunset



**CB44/0228**  
Grand Canyon

■ Available in Coordinating Area Rugs ■ Available in Coordinating 26" Wide Roll Runners ■ Available in Coordinating 31" Wide Roll Runners ■ Available in Coordinating Special Shapes



# PELICAN ISLAND

INDOOR/  
OUTDOOR  
USE

SPECIFICATIONS

PILE

100% Courtron™  
Polypropylene

WEAVE

Structured Flatwoven

PATTERN REPEAT

2.95" W x 2.83" L  
(Straight Match)

WIDTH

13'2" (4 Meters)



**CBJ2/1001**  
Gunmetal



**CBJ2/1002**  
Silver



**CBJ2/1003**  
Ash



**CBJ2/1004**  
Cinnamon



**CBJ2/1005**  
Bronze

# PERSIAN BIDJAR

SPECIFICATIONS

## PILE

100% Heat-Set  
Courtron™ Polypropylene

## WEAVE

Face-to-Face Woven Wilton  
Featuring One Million  
Points Per Square Meter

## PATTERN REPEAT

12" W x 10.5" L  
(Straight Match)

## WIDTH

13'2" (4 Meters)



**CB08/4872**  
Crimson



**CB08/4879**  
Black



**CB08/4881**  
Olive



**CB08/4976**  
Beige

# PERSIAN GARDEN

SPECIFICATIONS

## PILE

100% Heat-Set  
Courtron™ Polypropylene

## WEAVE

Face-to-Face Woven Wilton

## PATTERN REPEAT

52.36" W x 40.94" L  
(Straight Match)

## WIDTH

13'2" (4 Meters)



**CB39/0001** ■ ■  
Beige



**CB39/0002** ■ ■  
Red

■ Available in Coordinating Area Rugs ■ Available in Coordinating 26" Wide Roll Runners ■ Available in Coordinating 31" Wide Roll Runners ■ Available in Coordinating Special Shapes

# PERSIAN ISFAHAN

## SPECIFICATIONS

### PILE

100% Heat-Set  
Courtron™ Polypropylene

### WEAVE

Face-to-Face Woven Wilton  
Featuring One Million  
Points Per Square Meter

### PATTERN REPEAT

39.37" W x 39.37" L  
(Straight Match)

### WIDTH

13'2" (4 Meters)



**CB51/4872** ■■■  
Crimson



**CB51/4874** ■  
Gold



**CB51/4876** ■  
Midnight

■ Available in Coordinating Area Rugs ■ Available in Coordinating 26" Wide Roll Runners ■ Available in Coordinating 31" Wide Roll Runners ■ Available in Coordinating Special Shapes

# RAELYN

## SPECIFICATIONS

### PILE

100% Heat-Set  
Courtron™ Polypropylene

### WEAVE

Face-to-Face Woven Wilton  
Featuring One Million  
Points Per Square Meter

### PATTERN REPEAT

39.37" W x 39.68" L  
(Straight Match)

### WIDTH

13'2" (4 Meters)



**CBK3/0001** ■ ■  
Seafoam



**CBK3/0002** ■ ■  
Tusk



**CBK3/0003** ■ ■  
Platinum



**CBK3/0004** ■ ■  
Cappuccino

# RIVERSTONE

## SPECIFICATIONS

### PILE

100% Heat-Set  
Courtron™ Polypropylene

### WEAVE

Face-to-Face Woven Wilton  
Hard-Twist Yarn Effect

### PATTERN REPEAT

Random Repeat

### WIDTH

13'2" (4 Meters)



**CBA7/0001**  
Seafoam



**CBA7/0002**  
Golden Bark



**CBA7/0003**  
Chive



**CBA7/0004**  
Paprika



**CBA7/0005**  
Cognac

■ Available in Coordinating Area Rugs ■ Available in Coordinating 26" Wide Roll Runners ■ Available in Coordinating 31" Wide Roll Runners ■ Available in Coordinating Special Shapes

# ROYAL TARTAN

SPECIFICATIONS

PILE

100% Heat-Set  
Courtron™ Polypropylene

WEAVE

Face-to-Face Woven Wilton  
Featuring One Million  
Points Per Square Meter

PATTERN REPEAT

9.84" W x 9.84" L  
(Straight Match)

WIDTH

13'2" (4 Meters)



**CB38/0504**  
Onyx/Classic Ivory



**CB38/6489**  
Sage/Classic Ivory

■ Available in Coordinating Area Rugs ■ Available in Coordinating 26" Wide Roll Runners ■ Available in Coordinating 31" Wide Roll Runners ■ Available in Coordinating Special Shapes

# SANTA BARBARA

SPECIFICATIONS

PILE  
100% Nylon

CONSTRUCTION  
Tufted Cut-Pile Print

PATTERN REPEAT  
17.48" W x 15.32" L  
(Straight Match)

WIDTH  
13'2" (4 Meters)



**CBI7/0001**  
Grey



**CBI7/0002**  
Soft Grey



**CBI7/0003**  
Chocolate



**CBI7/0004**  
Merlot



**CBI7/0005**  
Midnight



**CBI7/0006**  
Toffee



**CBI7/0007**  
Pewter

■ Available in Coordinating Area Rugs ■ Available in Coordinating 26" Wide Roll Runners ■ Available in Coordinating 31" Wide Roll Runners ■ Available in Coordinating Special Shapes



# SANTA CLARITA

SPECIFICATIONS

## PILE

100% Premium Nylon –  
Type 6,6

## CONSTRUCTION

Tufted Loop Pile Print

## PATTERN REPEAT

5.62" W x 6.87" L  
(Straight Match)

## WIDTH

13'2" (4 Meters)



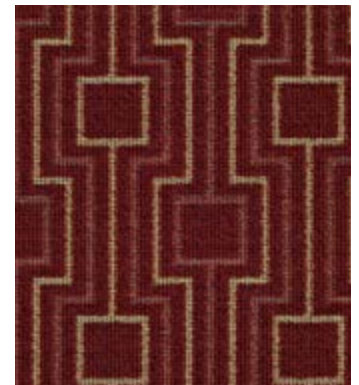
**CBH5/0001**  
Beige



**CBH5/0002**  
Goldenrod



**CBH5/0003**  
Toast



**CBH5/0004**  
Cranberry



**CBH5/0005**  
Silver



**CBH5/0006**  
Grey



**CBH5/0007**  
Midnight

■ Available in Coordinating Area Rugs ■ Available in Coordinating 26" Wide Roll Runners ■ Available in Coordinating 31" Wide Roll Runners ■ Available in Coordinating Special Shapes

# SANTA CRUZ

## SPECIFICATIONS

### PILE

100% Premium Nylon –  
Type 6,6

### CONSTRUCTION

Tufted Loop Pile Print

### PATTERN REPEAT

8.5" W x 4.37" L  
(Half-Drop Match)

### WIDTH

13'2" (4 Meters)



**CBH8/0001**  
Beige



**CBH8/0002**  
Goldenrod



**CBH8/0003**  
Taupe



**CBH8/0004**  
Cranberry



**CBH8/0005**  
Silver



**CBH8/0006**  
Khaki



**CBH8/0007**  
Midnight

■ Available in Coordinating Area Rugs ■ Available in Coordinating 26" Wide Roll Runners ■ Available in Coordinating 31" Wide Roll Runners ■ Available in Coordinating Special Shapes

# SANTA MARIA

## SPECIFICATIONS

PILE  
100% Nylon

CONSTRUCTION  
Tufted Cut-Pile Print

PATTERN REPEAT  
39.37" W x 39.88" L  
(Straight Match)

WIDTH  
13'2" (4 Meters)



**CB18/0001**  
Grey



**CB18/0002**  
Soft Grey



**CB18/0003**  
Chocolate



**CB18/0004**  
Merlot



**CB18/0005**  
Midnight



**CB18/0006**  
Slate

■ Available in Coordinating Area Rugs ■ Available in Coordinating 26" Wide Roll Runners ■ Available in Coordinating 31" Wide Roll Runners ■ Available in Coordinating Special Shapes

# SANTA MONICA

SPECIFICATIONS

**PILE**

100% Premium Nylon –  
Type 6,6

**CONSTRUCTION**

Tufted Loop Pile Print

**PATTERN REPEAT**

8.5" W x 10.5" L  
(Half-Drop Match)

**WIDTH**

13'2" (4 Meters)



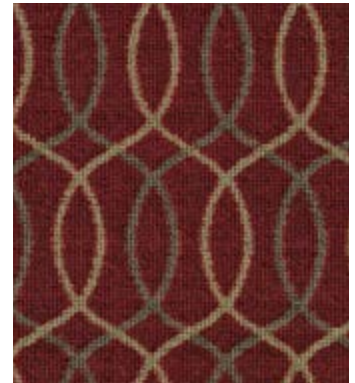
**CBH4/0001**  
Beige



**CBH4/0002**  
Goldenrod



**CBH4/0003**  
Toast



**CBH4/0004**  
Cranberry



**CBH4/0005**  
Silver



**CBH4/0006**  
Aqua



**CBH4/0007**  
Pewter



**CBH4/0008**  
Midnight

■ Available in Coordinating Area Rugs ■ Available in Coordinating 26" Wide Roll Runners ■ Available in Coordinating 31" Wide Roll Runners ■ Available in Coordinating Special Shapes

# SANTA ROSA

SPECIFICATIONS

PILE  
100% Nylon

CONSTRUCTION  
Tufted Cut-Pile Print

PATTERN REPEAT  
13.11" W x 14.37" L  
(Straight Match)

WIDTH  
13'2" (4 Meters)



**CBI6/0001**  
Grey



**CBI6/0002**  
Beige



**CBI6/0003**  
Chocolate



**CBI6/0004**  
Merlot



**CBI6/0005**  
Midnight



**CBI6/0006**  
Storm



**CBI6/0007**  
Slate

■ Available in Coordinating Area Rugs ■ Available in Coordinating 26" Wide Roll Runners ■ Available in Coordinating 31" Wide Roll Runners ■ Available in Coordinating Special Shapes

# SAUSALITO

## SPECIFICATIONS

**PILE**  
100% Nylon

**CONSTRUCTION**  
Tufted Cut-Pile Print

**PATTERN REPEAT**  
19.68" W x 19.29" L  
(Straight Match)

**WIDTH**  
13'2" (4 Meters)



**CB19/0001**  
Slate



**CB19/0002**  
Soft Grey



**CB19/0003**  
Chocolate



**CB19/0004**  
Merlot



**CB19/0005**  
Midnight



**CB19/0006**  
Storm

■ Available in Coordinating Area Rugs ■ Available in Coordinating 26" Wide Roll Runners ■ Available in Coordinating 31" Wide Roll Runners ■ Available in Coordinating Special Shapes

# SCROLL

## SPECIFICATIONS

**PILE**

100% Heat-Set  
Courtron™ Polypropylene

**WEAVE**

Face-to-Face Woven Wilton  
Featuring One Million  
Points Per Square Meter

**PATTERN REPEAT**

19.75" W x 19.75" L  
(Half-Drop Match)

**WIDTH**

13'2" (4 Meters)



**CB18/4830**  
Canvas



**CB18/4832** ■ ■  
Antique Linen



**CB18/4840**  
Tan



**CB18/4873** ■ ■  
Mahogany



**CB18/4880** ■ ■ ■  
Ebony



**CB18/4882** ■ ■  
Oriental Green

■ Available in Coordinating Area Rugs ■ Available in Coordinating 26" Wide Roll Runners ■ Available in Coordinating 31" Wide Roll Runners ■ Available in Coordinating Special Shapes

# SEA BRIGHT

INDOOR/  
OUTDOOR  
USE

SPECIFICATIONS

PILE  
100% Courtron™  
Polypropylene

WEAVE  
Structured Flatwoven

PATTERN REPEAT  
5.90" W x 6.29" L  
(Straight Match)

WIDTH  
12'6"



**CBK7/0001**  
Sand Dollar



**CBK7/0002**  
Dune



**CBK7/0003**  
Driftwood



**CBK7/0004**  
Sea Mist



**CBK7/0005**  
Starry Sky

■ Available in Coordinating Area Rugs ■ Available in Coordinating 26" Wide Roll Runners ■ Available in Coordinating 31" Wide Roll Runners ■ Available in Coordinating Special Shapes



# ST. CROIX

INDOOR/  
OUTDOOR  
USE

SPECIFICATIONS

PILE

100% Courtron™  
Polypropylene

WEAVE

Structured Flatwoven

PATTERN REPEAT

.24" W x .70" L  
(Straight Match)

WIDTH

13'2" (4 Meters)



**CBE7/0001**  
Dune



**CBE7/0002**  
Bronze



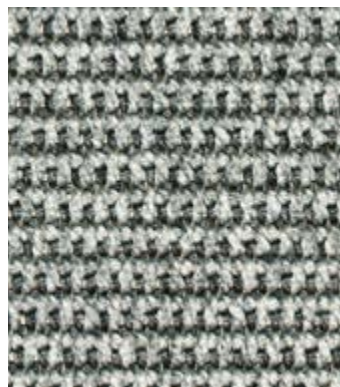
**CBE7/0003**  
Pewter



**CBE7/0004**  
Cobblestone



**CBE7/0005**  
Frost



**CBE7/0008**  
Slate

# ST. KITTS

INDOOR/  
OUTDOOR  
USE

SPECIFICATIONS

PILE

100% Courtron™  
Polypropylene

WEAVE

Structured Flatwoven

PATTERN REPEAT

3.71" W x 2.86" L  
(Straight Match)

WIDTH

13'2" (4 Meters)



**CBF3/0001**  
Dune



**CBF3/0002**  
Bronze



**CBF3/0003**  
Pewter



**CBF3/0004**  
Cobblestone



**CBF3/0005**  
Frost



**CBF3/0006**  
Ebony



**CBF3/0008**  
Slate

■ Available in Coordinating Area Rugs ■ Available in Coordinating 26" Wide Roll Runners ■ Available in Coordinating 31" Wide Roll Runners ■ Available in Coordinating Special Shapes

# ST. LUCIA

INDOOR/  
OUTDOOR  
USE

SPECIFICATIONS

PILE

100% Courtron™  
Polypropylene

WEAVE

Structured Flatwoven

PATTERN REPEAT

.86" W x .71" L  
(Straight Match)

WIDTH

13'2" (4 Meters)



**CBF4/0001**  
Dune



**CBF4/0002**  
Bronze



**CBF4/0003**  
Pewter



**CBF4/0004**  
Cobblestone



**CBF4/0005**  
Frost



**CBF4/0006**  
Ebony



**CBF4/0008**  
Slate

■ Available in Coordinating Area Rugs ■ Available in Coordinating 26" Wide Roll Runners ■ Available in Coordinating 31" Wide Roll Runners ■ Available in Coordinating Special Shapes

# SUNRISE

## SPECIFICATIONS

PILE  
100% Pure Wool

WEAVE  
Flatwoven

PATTERN REPEAT  
No Repeat

WIDTH  
13'2" (4 Meters)



**CB60/0001**  
Sisal/Beige



**CB60/0002**  
Sisal/Hunter Green



**CB60/0003**  
Sisal/Black

# TELLURIDE

## SPECIFICATIONS

### PILE

100% Heat-Set  
Courtron™ Polypropylene

### WEAVE

Face-to-Face  
Woven Wilton Shag

### PATTERN REPEAT

No Repeat

### WIDTH

13'2" (4 Meters)



**CBI5/0001**  
Frost



**CBI5/0002**  
Eggshell



**CBI5/0003**  
Cappuccino



**CBI5/0004**  
Ash



**CBI5/0005**  
Slate

# THOUSAND OAKS

SPECIFICATIONS

## PILE

100% Premium Nylon –  
Type 6,6

## CONSTRUCTION

Tufted Loop Pile Print

## PATTERN REPEAT

19" W x 13" L  
(Straight Match)

## WIDTH

13'2" (4 Meters)



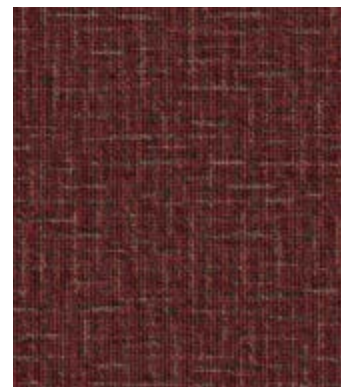
**CBH9/0001**  
Beige



**CBH9/0002**  
Goldenrod



**CBH9/0003**  
Toast



**CBH9/0004**  
Cranberry



**CBH9/0005**  
Cream



**CBH9/0006**  
Buttercream



**CBH9/0007**  
Khaki



**CBH9/0008**  
Midnight

# TORTOLA

INDOOR/  
OUTDOOR  
USE

SPECIFICATIONS

PILE

100% Courtron™  
Polypropylene

WEAVE

Structured Flatwoven

PATTERN REPEAT

3.44" W x 1.06" L  
(Straight Match)

WIDTH

13'2" (4 Meters)



**CBJ6/1001**  
Gunmetal



**CBJ6/1002**  
Silver



**CBJ6/1003**  
Ash



**CBJ6/1004**  
Cinnamon



**CBJ6/1005**  
Bronze

■ Available in Coordinating Area Rugs ■ Available in Coordinating 26" Wide Roll Runners ■ Available in Coordinating 31" Wide Roll Runners ■ Available in Coordinating Special Shapes

# TOSCANO

## SPECIFICATIONS

### PILE

100% Heat-Set  
Courtron™ Polypropylene

### WEAVE

Face-to-Face Woven Wilton

### PATTERN REPEAT

2.75" W x 4.75" L  
(Straight Match)

### WIDTH

13'2" (4 Meters)



**CBF7/0001**  
Camel



**CBF7/0002**  
Silver



**CBF7/0003**  
Midnight



**CBF7/0004**  
Cocoa



**CBF7/0006**  
Smoke Blue



**CBF7/0007**  
Cream



# ENEZIA

## SPECIFICATIONS

### PILE

100% Heat-Set  
Courtron™ Polypropylene

### WEAVE

Face-to-Face Woven Wilton

### PATTERN REPEAT

11.25" W x 11.25" L  
(Straight Match)

### WIDTH

13'2" (4 Meters)



**CBF8/0001**  
Camel



**CBF8/0002**  
Silver



**CBF8/0003**  
Midnight



**CBF8/0004**  
Cocoa



**CBF8/0005**  
Burgundy



**CBF8/0006**  
Smoke Blue

# VIENNA

## SPECIFICATIONS

### PILE

100% Heat-Set  
Courtron™ Polypropylene

### WEAVE

Face-to-Face Woven Wilton  
Featuring A Unique Two  
Color, Two-Ply Twist

### PATTERN REPEAT

1.57" W x 3.14" L  
(Half-Drop Match)

### WIDTH

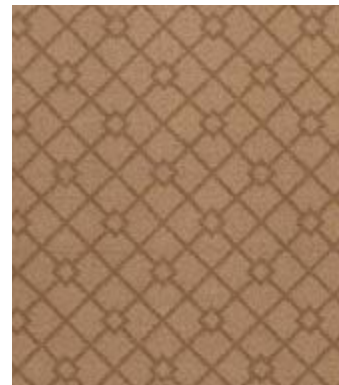
13'2" (4 Meters)



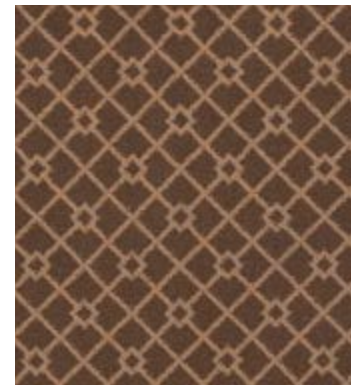
**CBB4/0001**  
Steel Blue/Brown



**CBB4/0002**  
Pistachio/Camel



**CBB4/0003**  
Camel/Brown



**CBB4/0004**  
Chocolate/Camel



**CBB4/0005**  
Ebony

# VIRGIN GORDA

INDOOR/  
OUTDOOR  
USE

SPECIFICATIONS

PILE

100% Courtron™  
Polypropylene

WEAVE

Structured Flatwoven

PATTERN REPEAT

5.51" W x 2.17" L  
(Straight Match)

WIDTH

13'2" (4 Meters)



**CBJ3/1001**  
Gunmetal



**CBJ3/1002**  
Silver



**CBJ3/1003**  
Ash



**CBJ3/1004**  
Cinnamon



**CBJ3/1005**  
Bronze

■ Available in Coordinating Area Rugs ■ Available in Coordinating 26" Wide Roll Runners ■ Available in Coordinating 31" Wide Roll Runners ■ Available in Coordinating Special Shapes

# VIVAR

## SPECIFICATIONS

### PILE

100% Heat-Set  
Courtron™ Polypropylene

### WEAVE

Face-to-Face Woven  
Wilton Featuring An  
Excess of One Million  
Points Per Square Meter

### PATTERN REPEAT

19.68" W x 28.34" L  
(Straight Match)

### WIDTH

13'2" (4 Meters)



**CB13/0001** ■ ■  
Champagne



**CB13/0002** ■ ■  
Oyster



**CB13/0003** ■ ■  
Pearl

# WILD PLAINS

COLLECTION

NAIROBI

SPECIFICATIONS

PILE

100% Heat-Set  
Courtron™ Polypropylene

WEAVE

Face-to-Face Woven Wilton  
Featuring One Million  
Points Per Square Meter

PATTERN REPEAT

39.37" W x 33.46" L  
(Straight Match)

WIDTH

13'2" (4 Meters)



**CBE2/0001** ■ ■  
Sable



**CBE2/0002** ■ ■  
Ebony

# WILD PLAINS

COLLECTION

NAMIBIA

SPECIFICATIONS

PILE

100% Heat-Set  
Courtron™ Polypropylene

WEAVE

Face-to-Face Woven Wilton  
Featuring One Million  
Points Per Square Meter

PATTERN REPEAT

22.50" W x 31.50" L  
(Straight Match)

WIDTH

13'2" (4 Meters)



**CBE3/0001** ■ ■  
Doeskin



**CBE3/0002**  
Sahara Tan

# WILD PLAINS

COLLECTION

UGANDA

SPECIFICATIONS

PILE

100% Heat-Set  
Courtron™ Polypropylene

WEAVE

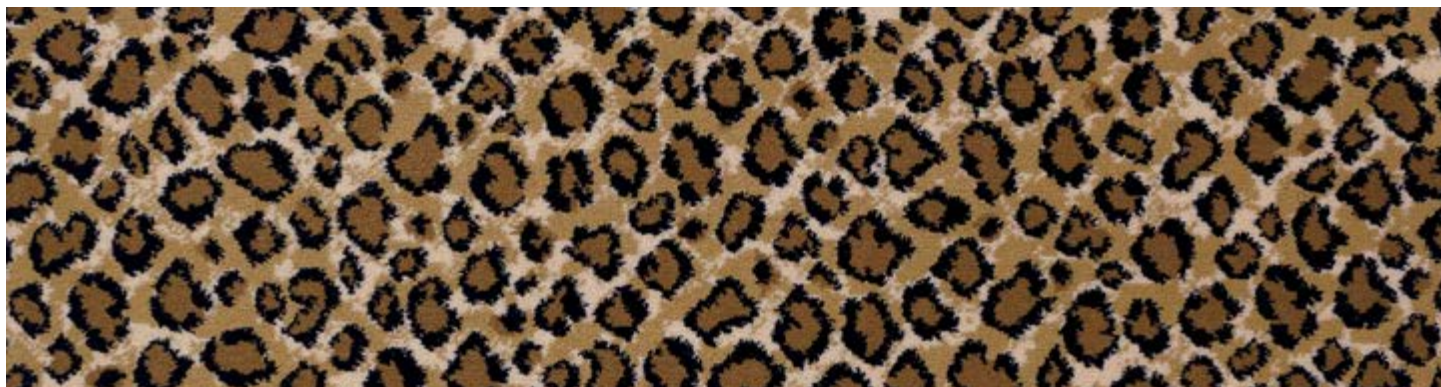
Face-to-Face Woven Wilton  
Featuring One Million  
Points Per Square Meter

PATTERN REPEAT

39.37" W x 37.55" L  
(Straight Match)

WIDTH

13'2" (4 Meters)



**CBE4/0001** ■ ■  
Ebony



TWO EXECUTIVE DRIVE, FORT LEE, NEW JERSEY 07024 • 800.223.6186 • COURISTAN.COM

WALL-TO-WALL CARPET • AREA RUGS • ROLL RUNNERS • CUSTOM CARPET

