



COURISTAN®

January–March
2016

Couri-er

SHORELINE COLLECTION

BRAND: Premiere, **PILE:** 100% Pure Wool, **WEAVE:** Wilton Woven Flatweave, **WIDTH:** 13'2" (4 Meters)
Casual Plaid and Stripe Patterns Featured in: Regatta Blue, Nantucket Red and Sand Dune (shown)

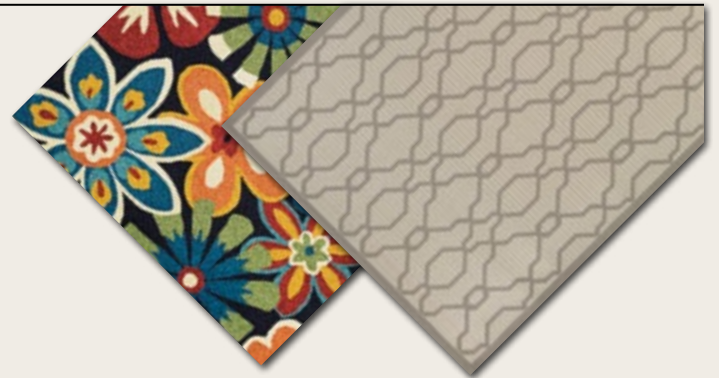


MERCHANDISING

OUTDOOR LIVING

Couristan will be offering its annual "Outdoor Living" merchandising promotion featuring its Outdoor Living Merchandising Box and "Without Walls" Display Unit. From March 21st through June 30th, authorized Couristan dealers can qualify for discounted rates on bundled orders of Couristan's most popular outdoor area rug collections.

Couristan will once again be offering the "Without Walls" Display Unit free of charge with a minimum purchase, which includes over 150 SKUs to choose from, and the Outdoor Living Merchandising Display Box, which gives dealers a ready-made option that markets Couristan's finest and freshest outdoor/indoor designs in one compact unit.



PROMOTIONS

COURISTAN'S 2016 WINTER/SPRING "SAVINGS EVENT" AND SALE PERIOD PROMOTIONS

For a limited time only, from March 1st – March 31st, Couristan's entire array of handmade and power-loomed area rugs will be available at their lowest dealer pricing of the year as part of the Winter/Spring 2016 "Savings Event" Program. Enhanced with fresh new designs in all categories, Couristan's assortment showcases a wide range of high-end fashions in a variety of price points ideal for today's cost-conscious consumers.

Contact your Couristan Territory Manager today about our "Savings Event" Program packages, pricing, minimum purchase requirements, complete co-op advertising opportunities and added merchandising benefits.

Be sure to stock up in time for our SPRING NATIONAL SALE PERIOD scheduled for April 1st – April 30th.

NEW

RESIDENTIAL BROADLOOM

VIEW THE COLLECTIONS



BEECH
PT29/0001 - Chocolate



BEECH
PT29/0002 - Taupe



BEECH
PT29/0004 - Oatmeal



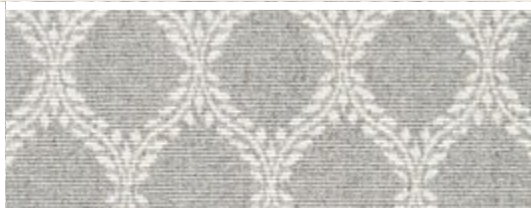
BEECH
PT29/0005 - Ivory

BRAND: Purity®, **PILE:** 100% Undyed Natural Wool, **WEAVE:** Hand-Loomed Cut and Loop Pile,
WIDTH: 15', **REPEAT:** 5.25" W x 5.25" L (Straight Match)

Available in: Chocolate, Taupe, Oatmeal, Ivory and Steel Grey (shown)



OLIVE
PT31/0001 - Sand



OLIVE
PT31/0001 - Alabaster



OLIVE
PT31/0004 - Chicory



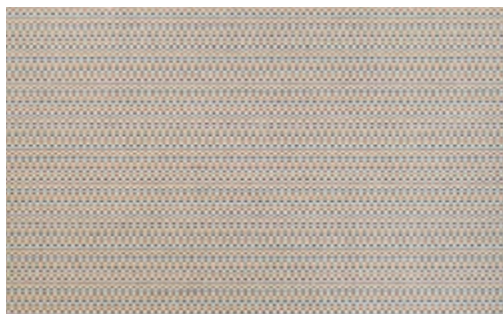
OLIVE
PT31/0001 - Flint

BRAND: Purity®, **PILE:** 100% Undyed Natural Wool, **WEAVE:** Woven Wilton Loop Pile,
WIDTH: 13'2" (4 Meters), **REPEAT:** 5.09" W x 9.44" L (Straight Match)

Available in: Sand, Alabaster, Chicory, Flint and Fossil (shown)



NEW AREA RUG COLLECTIONS



RIVERSIDE COLLECTION

STURDY 100% COURTRON™ POLYPROPYLENE
HEAVY STRUCTURED WEAVE WITH MULTI-COLORED YARN
UV STABILIZED, WATER RESISTANT, MOLD/MILDEW RESISTANT
PROVIDES DURABLE PERFORMANCE IN FREQUENTLY USED SPACES
INSIDE AND OUTSIDE THE HOME

NO PILE HEIGHT (FLAT WEAVE) | POWER-LOOMED IN BELGIUM

Available in 6 Area Rugs

SIZES | 2' x 3'7", 3'11" x 5'7", 5'3" x 7'6", 7'10" x 10'9",
9'2" x 12'5", 2'2" x 7'10" Runner



TRADITIONS COLLECTION

100% HEAT-SET COURTRON™ POLYPROPYLENE
FACE-TO-FACE WILTON WOVEN
TIME-HONORED, PERSIAN-INSPIRED DESIGNS
PILE HEIGHT: .35" | POWER-LOOMED IN BELGIUM



SPECTRUM COLLECTION

100% HEAT-SET COURTRON™
POLYPROPYLENE

FACE-TO-FACE WILTON WOVEN

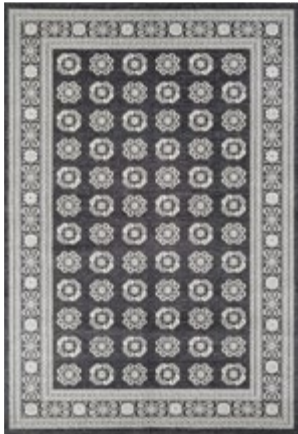
ULTRA-CONTEMPORARY DESIGNS INFUSED
WITH BRIGHT AND BOLD COLORS

PILE HEIGHT: .334"

POWER-LOOMED IN BELGIUM

Available in 5 Area Rugs

SIZES | 2' x 3'7", 3'11" x 5'7", 5'3" x 7'6",
7'10" x 10'9"



Available in 11 Area Rugs

SIZES | 2' x 3'7", 3'11" x 5'3", 5'3" x 7'6", 7'10" x 11'2",
9'2" x 12'5", 2'7" x 7'10" Runner

MADERA COLLECTION

100% LINEN

DESIGNS FEATURE CUT-PILE ACCENTS
OVER A SOUMAC WEAVE

APPROX. PILE HEIGHT: .196" | HAND-CRAFTED IN INDIA

Available in 7 Area Rugs

SIZES | 2' x 4', 3'5" x 5'5", 5'6" x 8', 8' x 11', 9'6" x 13'6"



BOWERY COLLECTION

100% PURE WOOL, FEATURING A UNIQUE MICRO HOOK CONSTRUCTION
FOR ADDED DIMENSION AND TEXTURE

CONTEMPORARY GEOMETRIC DESIGNS IN A FRESH BLEND OF MODERN COLORS

APPROX. PILE HEIGHT: .236" | HAND-CRAFTED IN INDIA | *Available in 12 Area Rugs*

SIZES | 2' x 4', 3'4" x 5'4", 5'2" x 7'4", 7'9" x 10'7",
9'5" x 13'4", 2'3" x 7'8" Runner



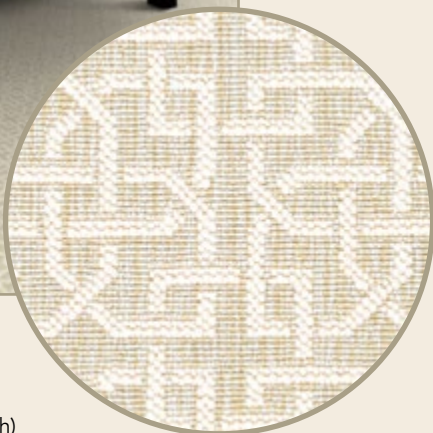
NEW BROADLOOM COLLECTIONS



MORGAN

BRAND: Premiere

Available in:
Khaki, Spruce,
Silver, Charcoal and
Natural (shown)



PILE 100% Pure Wool
WEAVE Woven Wilton Loop Pile
WIDTH 13'2" (4 Meters)
REPEAT 5.09"W x 6.14"L (Straight Match)

MURANO

BRAND Creations™
PILE 100% Heat-Set Courtron™ Polypropylene
WEAVE Face-To-Face Woven Wilton Featuring an Excess of One Million Points Per Square Meter
WIDTH 13'2" (4 Meters)
REPEAT 39.37"W x 33.46"L (Straight Match)



Champagne



Oyster



Pearl

** Available in 26" and 31" Wide Roll Runners*

SANTA MARIA



BRAND Creations™
PILE 100% Nylon
CONSTRUCTION Tufted Cut-Pile Print
WIDTH 13'2" (4 Meters)
REPEAT 39.37"W x 39.88"L (Straight Match)

Available in: Grey, Chocolate,
Merlot, Midnight, Slate
and Soft Grey (shown)



NOTE

RESIDENTIAL BROADLOOM

These products can be fabricated into a Custom Size Area Rug.

Finishing options include the following bindings: Chenille, Cotton Basketweave, Cotton Fabric, Linen, Genuine Leather and Courtron™ Polypropylene (For Outdoor/Indoor Usage). Programmed Borders, Wool and Synthetic Serging and 2" Length Wool Fringe are also available.

Contact your Couristan Territory Manager today in regard to our Custom Area Rug Board and Program.

SUTTON STRIPE

BRAND	Premiere
PILE	100% Pure New Zealand Wool
CONSTRUCTION	Tufted Loop Pile
WIDTH	13'2" (4 Meters)
REPEAT	.62" Wide

Available in: Sugar Snap, Cotton Candy, Sugar Cookie, Cobalt and Blue Bell (shown)



VIRGIN GORDA

FOR INDOOR/OUTDOOR USE

BRAND	Creations™
PILE	100% Courtron™ Polypropylene
WEAVE	Structured Flatwoven
WIDTH	13'2" (4 Meters)
REPEAT	5.51" W x 2.17" L (Straight Match)

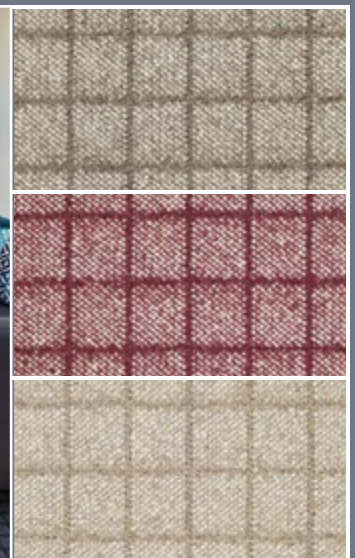
Available in: Gunmetal, Silver, Cinnamon, Bronze and Ash (shown)



DANBY SQUARE

Available in: Gingerbread, Garnet, Barley and Lapis (shown)

BRAND	Premiere
PILE	100% Pure Wool
CONSTRUCTION	Tufted Loop Pile
WIDTH	13'2" (4 Meters)
REPEAT	2.5" W x 2.5" L (Straight Match)



90TH ANNIVERSARY COLLECTION DEBUT



COURISTAN[®]
NINE DECADES OF ICONIC STYLING AND QUALITY

*visit our
showrooms!*

ATLANTA INTERNATIONAL AREA RUG MARKET

JANUARY
2016

13-16TH

SHOWROOM
6D11, 6TH FLOOR

WALL-TO-WALL CARPET | AREA RUGS | ROLL RUNNERS | CUSTOM CARPET

COURISTAN.COM

800.223.6168

