



# HOME RETREAT

Fashion and Value  
Collections



 **COURISTAN<sup>®</sup>**  
*Inspired by Life*

# FABULOUS FINDS FOR THE FRUGAL FASHIONISTA

Finding fashions to perfectly achieve that special unique vision, while staying within a budget, is often a decorator's biggest challenge. With these vivacious and visually stunning designs, it is a proven fact that extraordinary style doesn't have to break the bank.

Attractive in price, design and quality, the eclectic fashions featured in this brochure are fit for practically any budget and showcase a variety of coveted trends in the home décor category. From classic Persian motifs to modern-casual textures, there are dozens of choices to accommodate a wide range of aesthetics from traditional to contemporary. Each of these superbly constructed power-loomed collections are made with highly durable, cost-conscious materials, like Courtron™ polypropylene, viscose and polyester, that will provide years of toe-curling enjoyment.

Adding a sense of laid-back luxury to any home, these outstandingly well-dressed designs will rejuvenate interiors with a special verve and reflect a personal style that has room to evolve.

## **FEATURED ON COVER:**

TOP SETTING: CALINDA 5195/0758 SAMOVAR/STEEL BLUE-IVORY

TOP LEFT: CIRÉ 3836/2590 ESTATE/CANVAS-LINEN

BOTTOM SETTING: MARINA 8962/0910 IBIZA/PEARL

BOTTOM LEFT: EASTON 6989/9861 CITY BRICKS/GRAFFITI BLUE



# TABLE OF CONTENTS

Home Retreat

*Fashion and Value Collections*

\$\$\$

---

BROMLEY*	1-4
BRUGES	5-8
CALINDA	9-12
CIRÉ*	13-17
EASTON	18-29
EVEREST*	30-34
GAIA	35-37
GYPSY	38-41
MARINA*	42-49
SERENITY	50-53
URBAN SHAG	54-56

**\* Selected Area Rugs Featured in this Brochure  
are Available in Matching Special Shapes,  
Roll Runners and/or Coordinating  
Wall-To-Wall Carpeting.**

*Please Check Size Availability of Each Design  
Prior to Placing an Order.*

# BROMLEY *collection*

A Blend of Wool, Courtron™ Polypropylene and Polyester



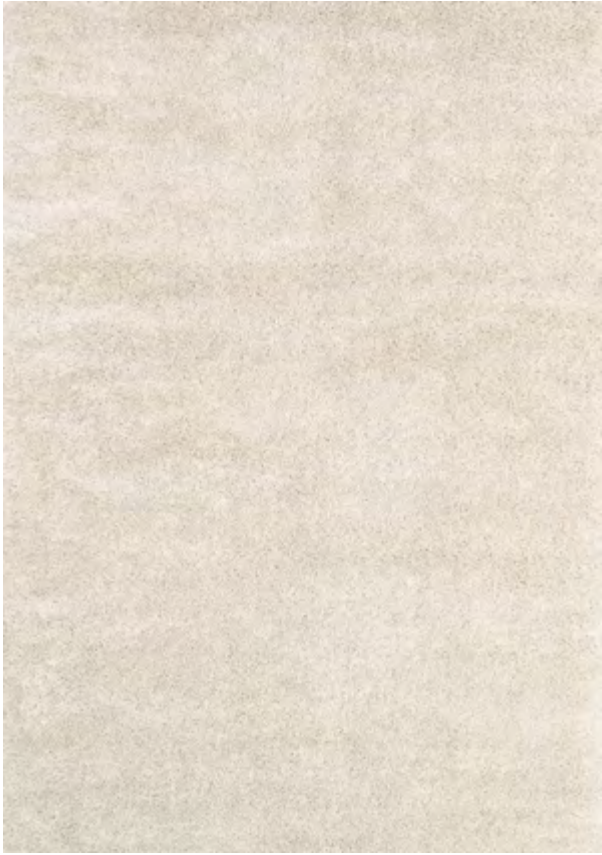
Featuring a Plush, Heavy Surface Pile  
Thickness of Differing Fiber  
Usage Creates a Unique Textured  
Appearance and Feel  
Solids and Moroccan-Inspired Designs  
Pile Height: 1.81"  
Power-Loomed in Belgium

## STOCKED SIZES

2' x 3'11" | 3'11" x 5'6" | 5'3" x 7'6" | 7'10" x 11'2" | 9'2" x 12'9" | 2'2" x 7'10" Runner

*\*ALL SIZES ARE APPROXIMATE*

■ Design is Available in Coordinating Wall-to-Wall Carpeting



**4311/0100**  
BRECKENRIDGE/SNOW ■



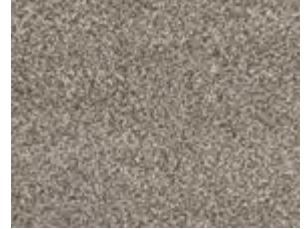
**4311/0110**  
BRECKENRIDGE/FROST ■



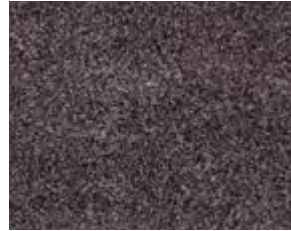
**4311/0120**  
BRECKENRIDGE/BRONZE ■



**4311/0509**  
BRECKENRIDGE/NAVY-GREY



**4311/0910**  
BRECKENRIDGE/COPPER ■



**4311/0920**  
BRECKENRIDGE/ASH ■



**4315/0102**  
PINNACLE/IVORY-CAMEL



**4315/0600**  
PINNACLE/CAMEL-IVORY



**4314/0910**  
DIAMONDBACK/MULTI-IVORY



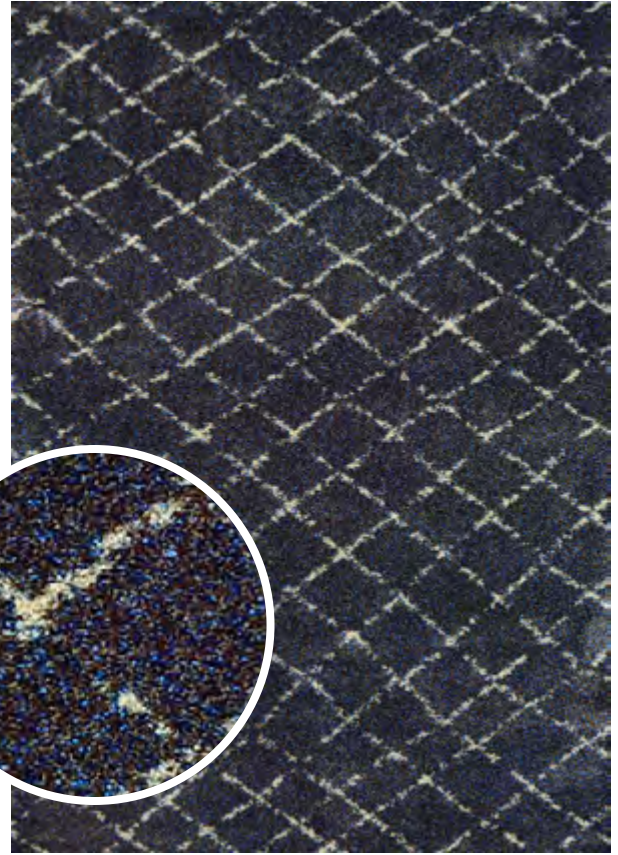
**4316/0336**  
DAVOS/SNOW-BROWN



**4317/0106**  
WHISTLER/BLUE-SNOW



**4319/2358**  
NOVIA/IVORY-CARAMEL-BLACK



**4331/7459**  
GIO/NAVY-GREY



**4353/3159**  
JAKARTA/IVORY-CARAMEL-BLACK



**4357/5100**  
KYOTO/SNOWFLAKE-BRONZE

# BRUGES *collection*

100% Ultra-Soft Polyester



Face-to-Face Wilton Woven  
Ethnic-Inspired Designs,  
Updated with a Modern Twist  
Featuring a Beautiful of-the-moment  
Color Palette  
Fringed Edges  
Pile Height: .276"  
Power-Loomed in Belgium

## STOCKED SIZES

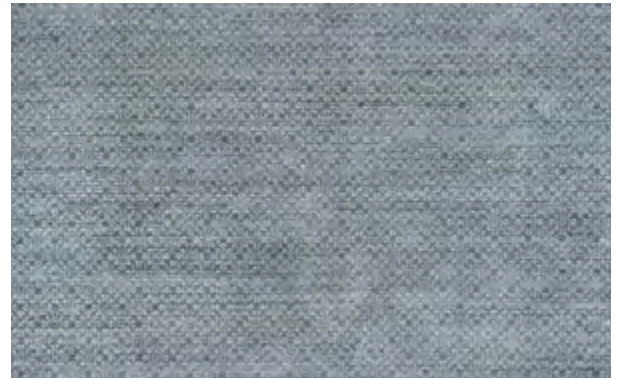
2' x 3'7" | 3'11" x 5'6" | 5'3" x 7'6" | 7'10" x 10'9" | 2'7" x 7'6" Runner

*\*ALL SIZES ARE APPROXIMATE*

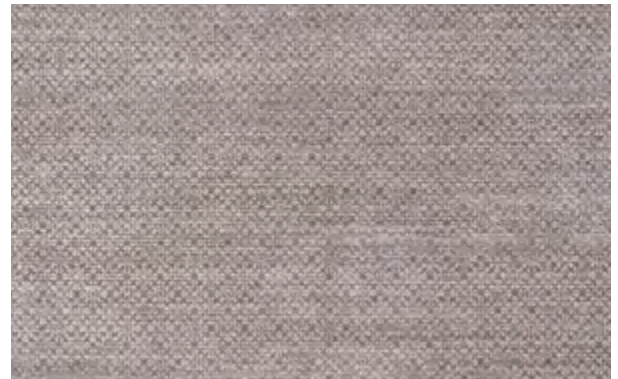




**8122/0614**  
TOREKEN/LINEN



**8122/0661**  
TOREKEN/MOSS



**8122/0691**  
TOREKEN/FLAX



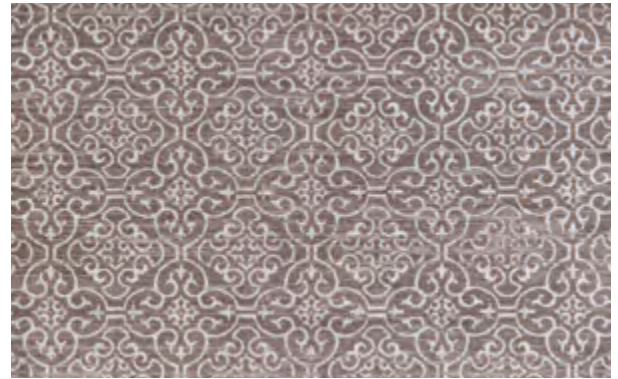
**8134/0712**  
BELFRY/LINEN-BLOSSOM



**8722/0712**  
GROTE/LINEN



**8825/0614**  
LIEGE/LINEN-NOUGAT



**8825/0691**  
LIEGE/FLAX



**8825/0702**  
LIEGE/BLOSSOM



**8828/0603**  
DIAMANTE/RIVER



**8828/0606**  
DIAMANTE/MOSS



**8828/0619**  
DIAMANTE/LINEN



**8828/0690**  
DIAMANTE/CHOCOLATE



**8828/0702**  
DIAMANTE/BLOSSOM

# CALINDA *collection*

A Unique Blend of 50% Heat-Set Courtron™ Polypropylene and 50% Polyester



Creates a High/Low Appearance  
in Each Area Rug

Face-to-Face Wilton Woven

Vintage-Inspired Designs Recreated  
with a Contemporary Twist

A Full Range of Today's Most Sought-After  
Colors Enhances the Appearance  
of Each Design

Pile Height: .393"

Power-Loomed in Turkey

## STOCKED SIZES

2' x 3' | 3'3" x 5'3" | 5'3" x 7'6" | 6'6" x 9'6" | 7'10" x 10'10" | 9'2" x 12'5"  
2'3" x 7'6" Runner

*\*ALL SIZES ARE APPROXIMATE*



**5173/0758**  
KINGSBURY/STEEL BLUE-IVORY



**5193/0747**  
EMMETT/GOLD-SILVER-IVORY



**5175/0747**  
SUMMER BLISS/GOLD-SILVER-IVORY



**5175/0758**  
SUMMER BLISS/STEEL BLUE-IVORY



**5176/0747**  
MONTEBELLO/GOLD-SILVER-IVORY



**5176/0758**  
MONTEBELLO/STEEL BLUE-IVORY



**5178/0747**  
MARLOWE/GOLD-SILVER-IVORY



**5178/0758**  
MARLOWE/STEEL BLUE-IVORY



**5179/0747**  
GRAND DAMASK/GOLD-SILVER-IVORY



**5179/0758**  
GRAND DAMASK/STEEL BLUE-IVORY



**5195/0747**  
SAMOVAR/GOLD-SILVER-IVORY



**5195/0758**  
SAMOVAR/STEEL BLUE-IVORY

# CIRÉ *collection*

Viscose and Courtron™ Polypropylene Chenille Yarn



Face-to-Face Wilton Woven  
Rich, Jewel-Toned Color Palette  
Chic Transitional Designs  
with a High-Low Carved Effect  
Plush, Textured Surface Adds Dimension  
Pile Height: .157"  
Power-Loomed in Belgium

#### STOCKED SIZES

2'1" x 3'7" | 3'11" x 5'5" | 5'3" x 7'6" | 7'10" x 11'2" | 2'7" x 7'6" Runner

#### SPECIAL SHAPES

7'10" Round

\*ALL SIZES ARE APPROXIMATE





1357/1210  
JERRICO/RUBY



1357/9271  
JERRICO/QUARTZ



1387/7272  
PALMER/MULTI



1438/6055  
CHERRINGTON/SMOKE-ANTIQUÉ CREAM



**1438/6539**

CHERRINGTON/GREIGE-ANTIQUÉ CREAM



**3855/5565**

AURORA REGAL/MUSHROOM-ANTIQUÉ CREAM



**3836/2590**

ESTATE/CANVAS-LINEN



**3836/8552**

ESTATE/MONARCH BLUE



**3887/6590**  
FLORAL MEDALLION/TAUPE



**3889/3530**  
DAMSEL/MULTI



**3929/6561**  
ROYAL GATE/LACE



**3894/6259**

VICTORIA MANSION/SADDLE



**3894/8585**

VICTORIA MANSION/MONARCH BLUE

# EASTON *collection*

100% Heat-Set Courtron™ Ultra-Fine Polypropylene



## STOCKED SIZES

2' x 3'7" | 3'11" x 5'3" | 5'3" x 7'6" | 6'6" x 9'6" | 7'10" x 11'2" | 9'2" x 12'5"  
2'7" x 7'10" Runner

*\*ALL SIZES ARE APPROXIMATE*

Face-to-Face Wilton Woven  
Designs are Created Using a Multi Point  
and Loom-Carved Technique

Soft Luxurious Finish In Excess of a  
Million Points of Yarn Per Square Meter

Pile Height: .35"

Power-Loomed in Belgium



**6335/3151**  
WINSLET/NAVY-SAPPHIRE



**6335/6343**  
WINSLET/BEIGE-BLACK



**6337/3282**  
ADALINE/ESPRESSO-CREAM



**6337/5191**  
ADALINE/NAVY-CREAM



6342/6151  
SURREY/BONE-MULTI



6342/6282  
SURREY/BONE-EARTHTONES



6343/6151  
DISTRESS PLANKING/BARK-NATURAL



6343/8282  
DISTRESS PLANKING/MOSS-DENIM



**6344/6676**  
FRISSON/IVORY



**6349/6191**  
FLORAL CHIC/BONE-MULTI



**6371/5161**  
TALAVERA/AQUARIUS



**6387/5897**  
ABSTRACT MURAL/ANTIQUE CREAM





**6989/9861**  
CITY BRICKS/GRAFFITI BLUE



**6398/0745**  
SHIMMERING/EARTHTONES-MULTI



**6398/9191**  
SHIMMERING/BONE-MULTI



**6590/4343**  
MIRADOR/GREY



6594/6424

CAMILLA/ANTIQUE CREAM-GREY



6597/3848

MOSAIC FLORALS/MULTI



6598/4848

PHOENIX/IVORY-SALMON



**6815/4343**  
MARIBEL/IVORY-GREY



**6815/6454**  
MARIBEL/ANTIQUÉ CREAM-GREY



**6822/3353**  
CAPELLA/BLACK-GREY



**6822/3848**  
CAPELLA/BROWN-MULTI



**6822/6575**  
CAPELLA/IVORY-LIGHT GREY



**6327/6823**  
SUFFOLK/BLACK-GREY



**6877/6353**  
PRESCOTT/IVORY-BLACK-GREY



**7392/5454**  
MAYNARD/ANTIQUÉ CREAM-TEAL



**7392/8868**  
MAYNARD/ANTIQUE CREAM-SALMON



**7928/4848**  
ZEN/EARTHTONES



**7933/6868**  
ROTHBURY/BEIGE-MULTI



**7964/4488**  
VIBE/DUSK



**6339/6343**  
TALON/BEIGE-NATURALS



**6345/5676**  
OGEE/DUSK BLUE



**6347/4343**  
SKYSCRAPER/BONE-NATURALS



**6842/6151**  
CHARLES/BONE-BLUE-MULTI



**6843/9191**

**WATERCOLORING/BONE-MULTI**



**6354/6696**

**CASTLE BLOCKS/STONE**



**6362/6656**

**ABSTRACT MOSAIC/SLATE**



**6437/6575**

**ANTIQUE LACE/FLAX**



**6437/7656**  
ANTIQUÉ LACE/OYSTER



**6373/8262**  
GRAVELSTONE/PEBBLE



**6373/9666**  
GRAVELSTONE/PEWTER



**6377/7676**  
BOUNTIFUL/PEWTER



# EVEREST *collection*

100% Heat-Set Courtron™ Polypropylene



## STOCKED SIZES

2' x 3'7" | 3'11" x 5'3" | 5'3" x 7'6" | 7'10" x 11'2" | 9'2" x 12'5" | 2'7" x 7'10" Runner

*\*ALL SIZES ARE APPROXIMATE*

- Design is Available in a Matching 26" Wide Roll Runner
- Design is Available in a Matching 31" Wide Roll Runner
- Design is Available in Coordinating Wall-to-Wall Carpeting
- Design is Loom-Carved with a Multi-Point Weaving Technique

Face-to-Face Wilton Woven

One Million Points of Yarn  
Per Square Meter

Soft, Luxurious Finish

Pile Height: .35"

Power-Loomed in Belgium and Bulgaria



**6033/6323**  
GRAPHITE/SEA MIST ■



**6316/6333**  
RETRO DAMASK/GREY-BLACK ■



**6303/6141**  
GEOMETRICS/NAVY-BONE ■



**6303/4343**  
GEOMETRICS/BROWN-MULTI ■ ■



**6303/6454**  
GEOMETRICS/TAN-TEAL ■ ■



**6351/5313**  
WILD DAISY/GREY-BLACK-WHITE ■



**6340/6323**

PERSIAN ARABESQUE/CHARCOAL-IVORY ■ ■



**6340/7565**

PERSIAN ARABESQUE/BONE



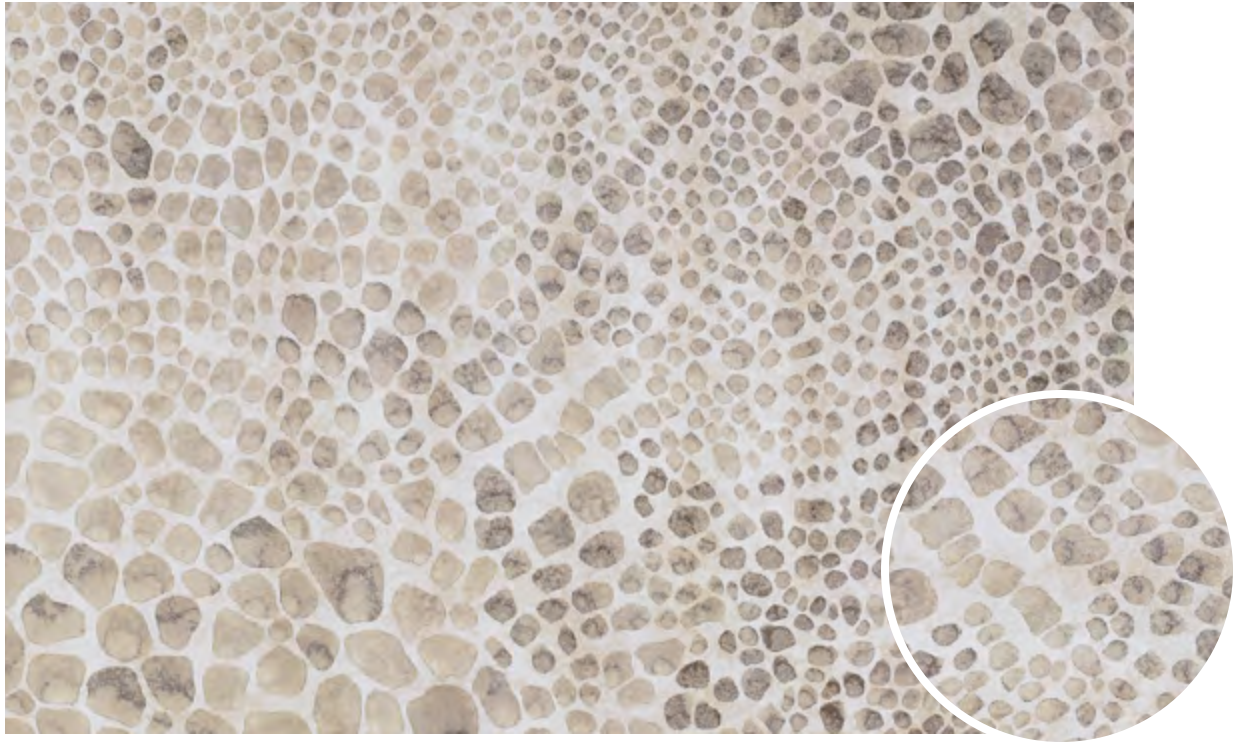
**8972/3363**

ROSETTA/EBONY ■ ■



**8972/6322**

ROSETTA/IVORY ■ ■



**6378/6575**  
STONE HARBOR/GREY ■

# GAIA *collection*

A Unique Blend of Polyester and Courtron™ Polypropylene



Face-to-Face Wilton Woven

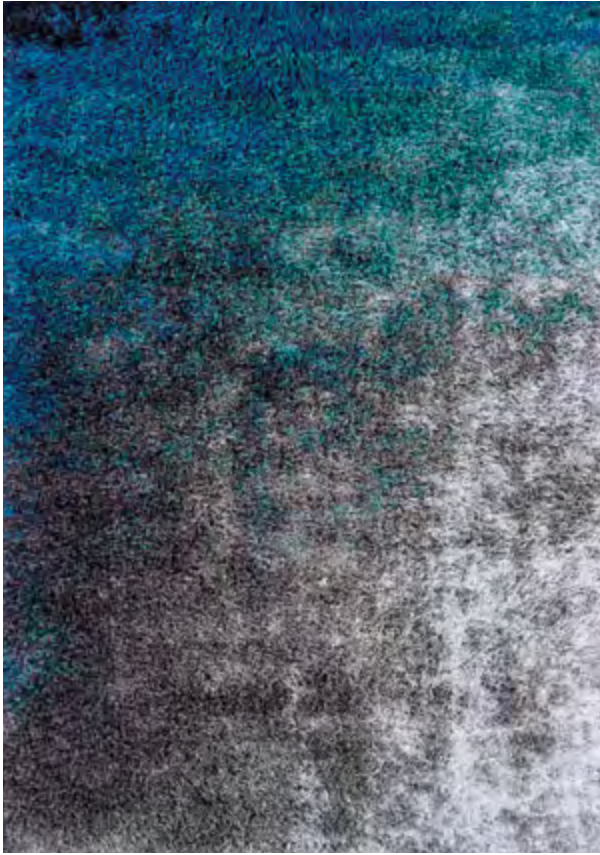
A Collection of Colorful Shag Area Rugs,  
Featuring Abstract Designs That Mirror the  
Elements

Approximate Pile Height: 1.97"  
Power-Loomed in Egypt

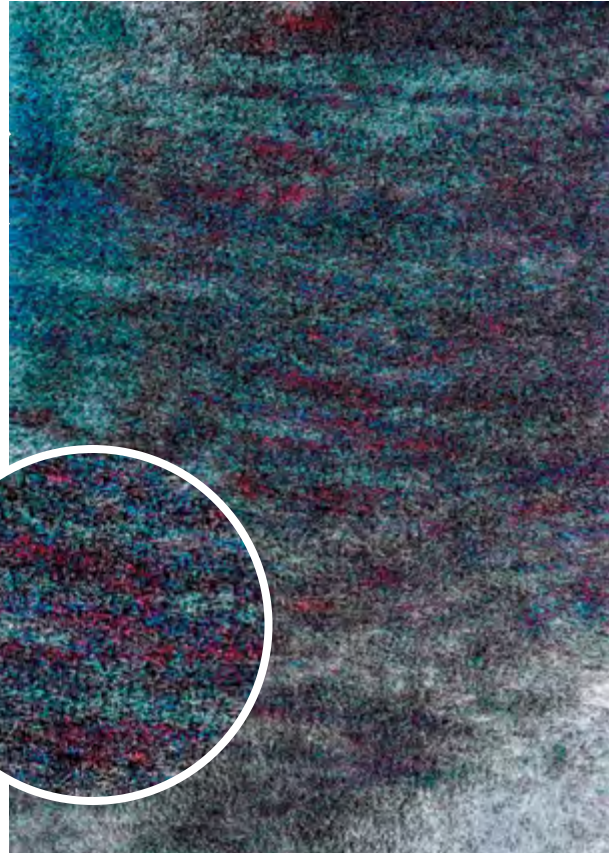
## STOCKED SIZES

3'3" x 5'5" | 5'3" x 7'6" | 6'6" x 9'6" | 7'10" x 10'10" | 9'10" x 12'10"  
2'2" x 7'6" Runner

*\*ALL SIZES ARE APPROXIMATE*



**3723/0723**  
OCEAN



**3724/0724**  
TWILIGHT



**3852/0825**  
DAYBREAK



**3922/0392**  
SUNSET



**4728/0728**  
FOG



# GYPSY *collection*

100% Heat-Set Courtron™ Polypropylene



## STOCKED SIZES

3'6" x 5'6" | 5'3" x 7'6" | 8' x 10'9" | 2'3" x 7'6" Runner

*\*ALL SIZES ARE APPROXIMATE*

Cross-Woven on Wilton Looms  
Each Traditional and Contemporary Design  
is Harmonized in a Carefully Sequenced  
Palette of Up to 48 Modern Hues

Soft, Low Pile

Pile Height: .354"

Power-Loomed in Turkey



**A035/0232**  
ROYALE/MOCHA-MULTI



**A168/0273**  
ELY/AQUA-MULTI-IVORY



**A700/0287**  
COLOGNE/BROWN-MULTI



**A702/0213**  
CHARTRES/ULTRAMARINE-MOCHA



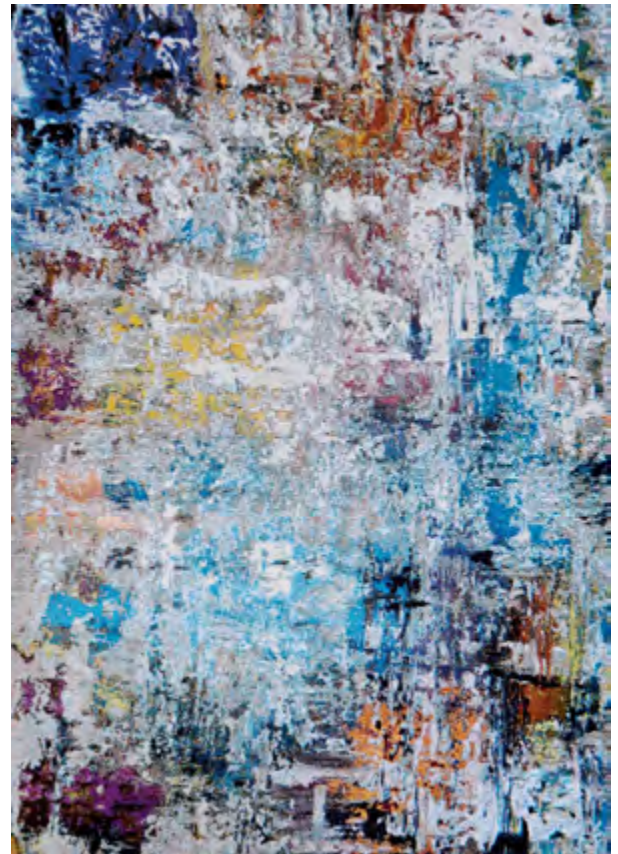
A711/0233

RETRO DAMSEL/IVORY-MUSHROOM-MULTI



A765/0233

REIMS/MAGENTA-BONE



AV29/0228

AQUARELLE/BONE-MULTI



**AV30/0227**

**ARTISTS PALETTE/OYSTER-MULTI**



**AV32/0236**

**STREET ART/BONE-MULTI**

# MARINA *collection*

100% Heat-Set Courtron™ Polypropylene



## STOCKED SIZES

2' x 3'11" | 3'11" x 5'6" | 5'3" x 7'6" | 6'6" x 9'6" | 7'10" x 10'9" | 9'2" x 12'9"  
2'2" x 7'10" Runner

*\*ALL SIZES ARE APPROXIMATE*

■ Design is Available in a Matching 26" Wide Roll Runner   ■ Design is Available in Coordinating Wall-to-Wall Carpeting

Face-to-Face Wilton Woven  
Designs are Created Using a Drop Stitch  
and Double Point Weaving Technique

Soft, Luxurious Finish  
In Excess of a Million Points of  
Yarn Per Square Meter

Pile Height: .393"

Power-Loomed in Belgium



**1255/0110**  
BARLETTA/CHAMPAGNE



**1255/0910**  
BARLETTA/PEARL-CHAMPAGNE



**1256/0110**  
SIENA/CHAMPAGNE

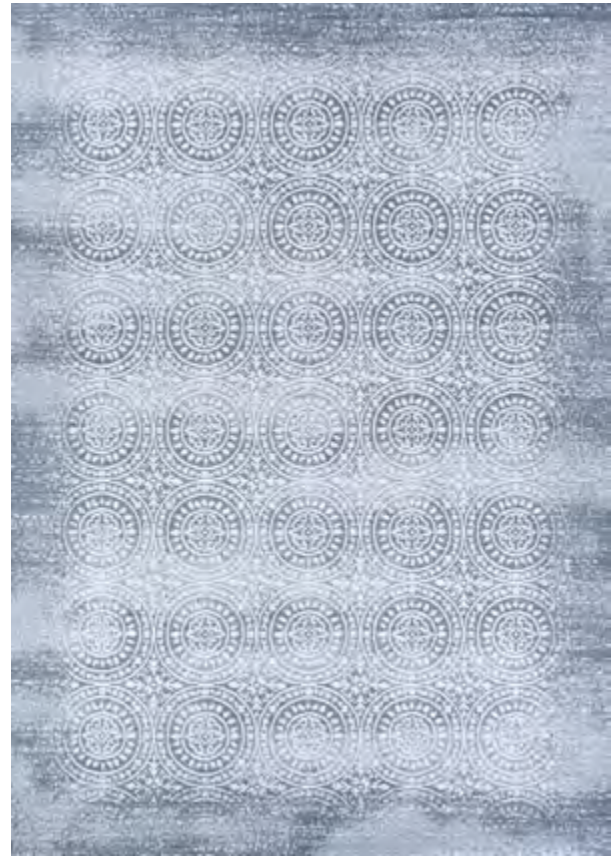


**1256/0910**  
SIENA/PEARL-CHAMPAGNE



**1264/0115**

GARDEN PATCHWORK/OYSTER-PEARL



**1267/0525**

UNISON/SLATE BLUE-PEARL



**1259/0225**

GRISAILLE/CONFEDERATE GREY-IVORY



**1259/0910**

GRISAILLE/PEARL-CHAMPAGNE



**8960/0100**  
ST. TROPEZ/CHAMPAGNE-PEARL ■ ■



**8962/0110**  
IBIZA/CHAMPAGNE ■ ■



**8962/0120**  
IBIZA/OYSTER ■ ■



**8962/0910**  
IBIZA/PEARL





**8961/0100**  
MALTA/CHAMPAGNE



**8963/0100**  
CAPRI/OYSTER ■



**8964/0110**  
CYPRUS/PEARL-OYSTER



**8964/0900**  
CYPRUS/OYSTER-PEARL



**8964/0910**  
CYPRUS/PEARL-CHAMPAGNE



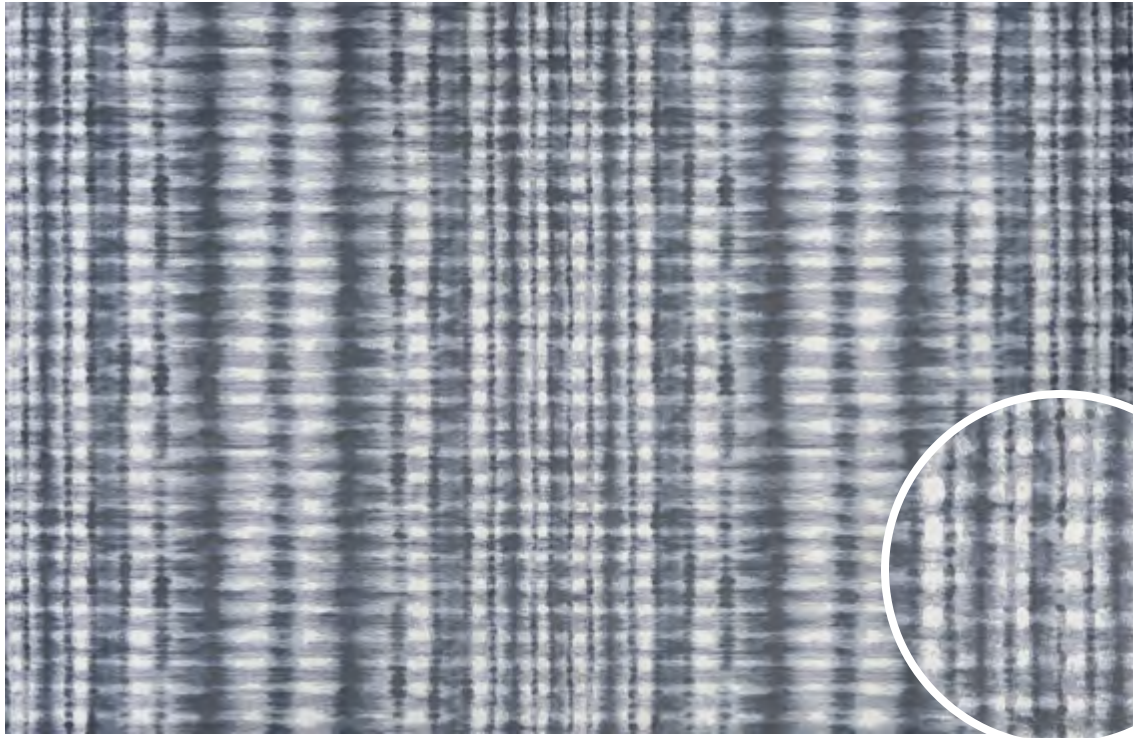
**8965/0130**  
CANNES/CHAMPAGNE



**8967/0902**  
VALLETTA/PEARL

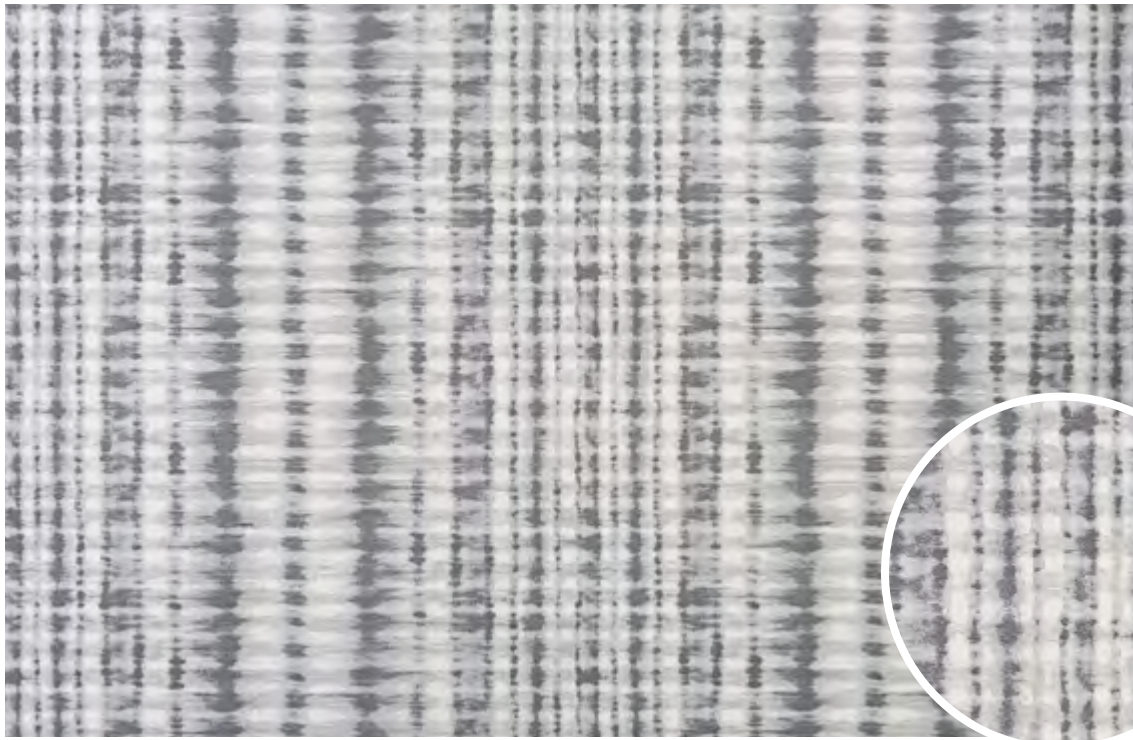


**8973/0672**  
RIMINI/PEARL-CHAMPAGNE



1257/0225

SHIBORI/CONFEDERATE-GREY-IVORY



1257/0719

SHIBORI/OYSTER-IVORY



**8974/0535**  
LILLIAN/SLATE BLUE-OYSTER



**8974/0567**  
LILLIAN/OYSTER-SLATE BLUE



**8976/0515**  
GARDEN GATE/OYSTER-SLATE BLUE

# SERENITY *collection*

100% Heat-Set Courtron™ Polypropylene



## STOCKED SIZES

2' x 3'11" | 3'11" x 5'6" | 5'3" x 7'6" | 6'6" x 9'6" | 7'10" x 10'9" | 9'2" x 12'9"  
2'2" x 7'10" Runner

*\*ALL SIZES ARE APPROXIMATE*

Face-to-Face Wilton Woven  
One Million Points of Yarn  
Per Square Meter  
Unique Abstract Designs Highlighted  
in Modern Colors  
Soft, Dense Luxurious Pile  
Pile Height: .393"  
Power-Loomed in Belgium



**5145/0100**  
CRYPTIC/BEIGE-CHAMPAGNE



**5145/0515**  
CRYPTIC/GREY-OPAL



**5145/0912**  
CRYPTIC/LIGHT GREY-CHAMPAGNE



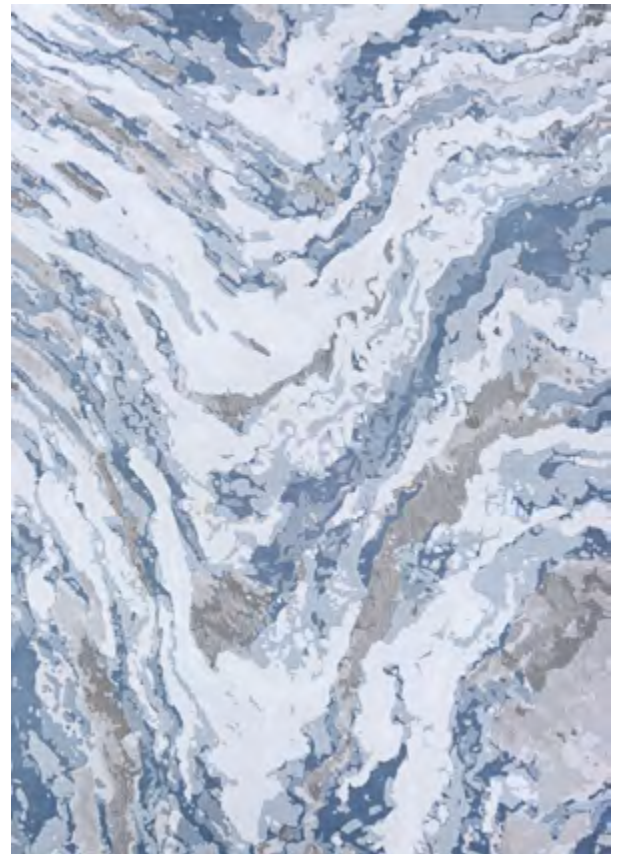
**5149/0910**  
WEATHERED/MUSHROOM-OPAL



**5158/0920**  
FIELD STONE/MUSHROOM-OPAL



**5161/0291**  
ABSTRACT MARBLE/OPAL-MUSHROOM



**5161/0505**  
ABSTRACT MARBLE/GREY-OPAL



**5159/0505**

**VIRGA/OPAL-GREY-MUSHROOM**



**5159/0910**

**VIRGA/MUSHROOM-OPAL**



**5159/0911**

**VIRGA/LIGHT GREY-OPAL**



# URBAN SHAG *collection*

100% Heat-Set Courtron™ Polypropylene



## STOCKED SIZES

2' x 3'11" | 3'11" x 5'3" | 5'3" x 7'6" | 6'6" x 9'6" | 7'10" x 10'10" | 9'2" x 12'3"  
2'2" x 7'7" Runner

*\*ALL SIZES ARE APPROXIMATE*

Face-to-Face Wilton Woven  
Ultra Soft, High Pile Reduces  
Tracking and Shading  
Featuring Contemporary-Casual  
Motifs and Solids  
Approximate Pile Height: 1.96"  
Power-Loomed in Turkey



**U017/0770**  
FES/WHITE-LIGHT GREY



**U157/0070**  
KAZA/WHITE-MINK



**U104/0014**  
TEMARA/NAVY-WHITE



**U104/0045**  
TEMARA/MINK-WHITE



**U223/0023**  
MEDINA/WHITE



**U223/0036**  
MEDINA/LIGHT GREY



**U223/0062**  
MEDINA/LIGHT BLUE

PULSE PRODUCT  
PORTFOLIO



SEPTEMBER 2018



TWO EXECUTIVE DRIVE, FORT LEE, NEW JERSEY 07024 • 800.223.6186 • COURISTAN.COM

*Wall-To-Wall Carpet • Area Rugs • Roll Runners • Custom Rugs*

