



COURISTAN®

July–September  
2018

# Couri-er

## HARPER COLLECTION

100% Fiber-Enhanced Courtron™ Polypropylene, Structured Flatwoven Construction  
Suitable for Outdoor/Indoor Use, UV Stabilized, Mold/Mildew Resistant  
Pile Height: No Pile (Flat Weave), Power-Loomed in Belgium, Available in 9 Area Rugs







# AREA RUG COLLECTIONS

## INDOOR/OUTDOOR INTRODUCTIONS

### TIMBER COLLECTION

66% Courtron™ Polypropylene/22% Polyester/12% Polyester-Cotton, Face-to-Face Wilton Woven  
Suitable for Outdoor/Indoor Use, UV Stabilized; Mold/Mildew/Water Resistant  
Pile Height: No Pile (Flat Weave) | Power-Loomed in Belgium  
SIZES: 2'2" x 4'3", 3'9" x 5'6", 5'1" x 7'6", 6'4" x 9'6", 7'7" x 10'9", 2'6" x 7'6" Runner, 7'10" Round



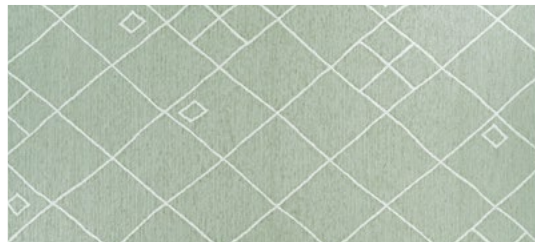
7761/0819 - Woodnote/Wheat  
(also available in Serenity Blue, Ash)



7725/0813 - Cascade/Serenity Blue  
(also available in Herb Green, Ash)



7734/0819 - Tenalach/Wheat  
(also available in Ash, Herb Green)



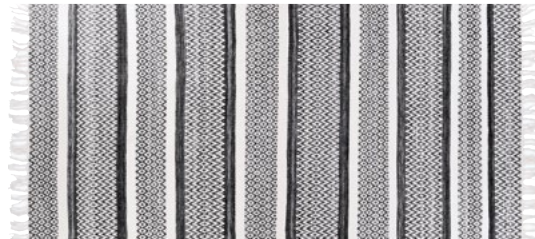
7762/0816 - Orion/Herb Green



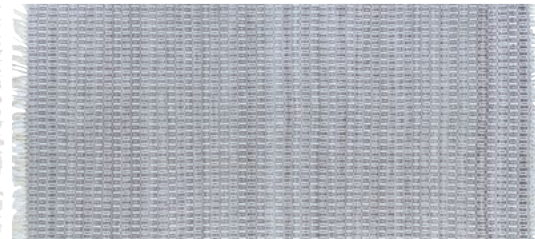
7765/0814 - Acorn/Ash  
(also available in Wheat)

### INLET COLLECTION

100% PET (High Content Recycled Materials), Hand-Woven  
Suitable for Outdoor/Indoor Use, UV Stabilized; Mold/Mildew/Water Resistant  
Pile Height: No Pile (Flat Weave) | Hand-Woven in India  
SIZES: 2' x 4', 5' x 8', 8' x 10'



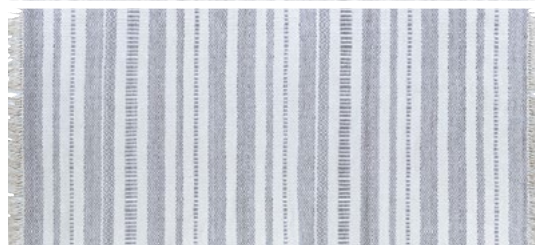
3445/0398 - Manasquan/Smoke  
(also available in Pebble)



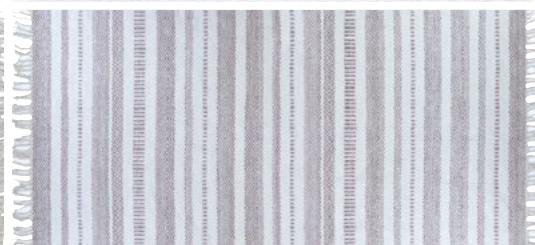
8946/0820 - Sea Girt/Boardwalk  
(also available in Pebble, Smoke)



3445/0445 - Manasquan/Pebble  
(also available in Smoke)



9362/0391 - Lavalette/Pebble  
(also available in Smoke)



9362/0392 - Lavalette/Boardwalk  
(also available in Smoke)







# INDOOR/OUTDOOR BROADLOOM

CREATIONS™ BRAND INTRODUCTIONS



**BERKSHIRE – 12' Width**

100% HEAT-SET COURTRON™ POLYPROPYLENE, WOVEN WILTON LOOP PILE



**ORTLEY – 12'6" Width**

100% COURTRON™ POLYPROPYLENE, STRUCTURED FLATWOVEN



**LENOX – 12' Width**

100% HEAT-SET COURTRON™ POLYPROPYLENE, WOVEN WILTON LOOP PILE



**MASQUE – 12' Width**

100% HEAT-SET COURTRON™ POLYPROPYLENE, WOVEN WILTON LOOP PILE



# NEW AREA RUG INTRODUCTIONS



## XANADU COLLECTION

100% SPACE-DYED POLYESTER, SUITABLE FOR OUTDOOR/INDOOR USE  
UV STABILIZED, MOLD/MILDEW RESISTANT, WATER RESISTANT  
INSPIRED BY OVER-DYED TURKISH DESIGNS IN BOLD AND DYNAMIC COLORS  
PILE HEIGHT: NO PILE (FLAT WEAVE) | POWER-LOOMED IN TURKEY

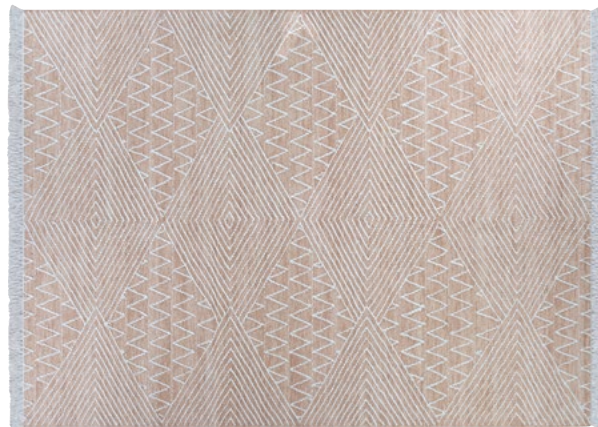
*Available in 8 Area Rugs*

**SIZES** | 2' x 3'7", 3'11" x 5'6", 5'3" x 7'2", 5'10" x 9'2", 7'6" x 10'9",  
8'6" x 12'11", 2'3" x 7'10" Runner, 7'2" Round



## CLOVER COLLECTION

100% PURE WOOL, HAND-WOVEN KILIM AREA RUGS  
CREATED BY UTILIZING AN OVER-TUFTED  
"EMBROIDERED" TECHNIQUE FOR A UNIQUE  
TEXTURED APPEARANCE





## SHIBUI COLLECTION

100% BLENDED WOOL  
INSPIRED BY ANCIENT JAPANESE SHIBORI  
TIE-DYED DESIGNS

CAREFULLY ENHANCED WITH A VIBRANT BLUE  
COLOR PALETTE FOR AN AUTHENTIC FEEL

APPROX. PILE HEIGHT: .393"

HAND-TUFTED IN INDIA

*Available in 4 Area Rugs*

**SIZES** | 2' x 4', 5' x 8', 6' x 9', 8' x 10'



## CLINTON HILL SHAG COLLECTION

100% ULTRA-SOFT POLYESTER

LUXURIOUS SHAG PILE IN A SOFT COLOR PALETTE

FEATURING A TABLE-TUFTED CONSTRUCTION FOR ADDED DEPTH AND TEXTURE

APPROX. PILE HEIGHT: 2.16" | HAND-CRAFTED IN CHINA | *Available in 5 Area Rugs*

**SIZES** | 2' x 4', 5'6" x 8', 8' x 10'



## BRUGES COLLECTION

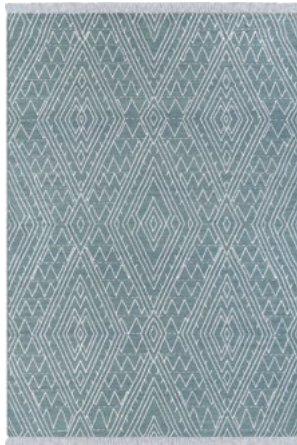
100% ULTRA-SOFT POLYESTER, FACE-TO-FACE WILTON WOVEN

INSPIRED BY TRADITIONAL ETHNIC DESIGNS

WITH A MODERN TWIST, FRINGED EDGES

PILE HEIGHT: .275" | POWER-LOOMED IN BELGIUM

*Available in 13 Area Rugs*



ZERO PILE FLATWOVEN | HAND-WOVEN IN INDIA

*Available in 4 Area Rugs*

**SIZES** | 2' x 4', 3' x 5', 5' x 8', 8' x 10', 9' x 12'





# NEW BROADLOOM INTRODUCTIONS

## INGENUITY



**BRAND:** Premiere

*Available in:*

Fawn, Soft Green, Seafoam, Oyster, and Teal (shown)

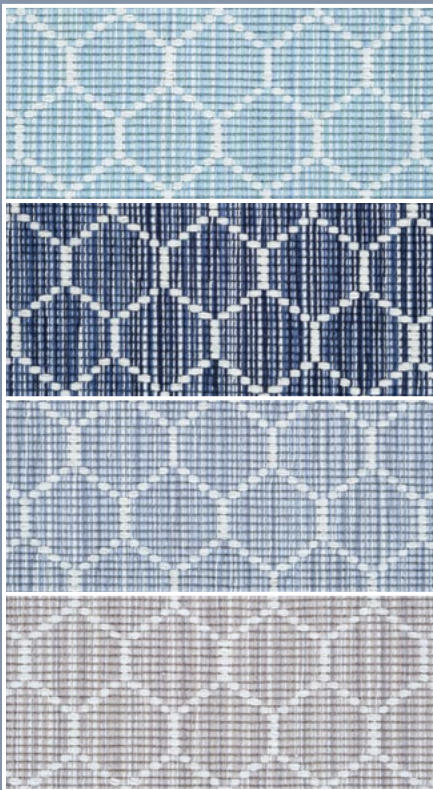
**PILE** 70% Tencel®/30% Wool  
**WEAVE** Woven Wilton Cut & Loop Pile  
**WIDTH** 13'2" (4 Meters)

## TROPICAL PARADISE

**BRAND** Premiere  
**PILE** 100% Pure Wool  
**WEAVE** Hand-Loomed Loop Pile  
**WIDTH** 15'

*Available in:*

Tidal Lagoon, Ocean Drive, Winter Chill, Beach Walk and River Wild (shown)



NOTE

## RESIDENTIAL BROADLOOM

*These products can be fabricated into a Custom Size Area Rug.*

Finishing options include the following bindings: Chenille, Cotton Basketweave, Cotton Fabric, Linen, Genuine Leather and Courtron™ Polypropylene (For Outdoor/Indoor Usage). Programmed Borders, Wool and Synthetic Serging and 2" Length Wool Fringe are also available.

Contact your Couristan Territory Manager today in regard to our Custom Area Rug Board and Program.

## ENVISION COLLECTION

**BRAND** Creations™  
**PILE** 50% Heat-Set Courtron™ Polypropylene/ 50% Polyester  
**WEAVE** Face-to-Face Woven Wilton High/Low Cut-Pile  
**WIDTH** 16'4" (5 Meters)

*Available in:* Oceania, Daring and Antiquity Designs

## OCEANIA

*Available in:* Urchin Gold, Aegean Blue and Jetty Stone





# MARRAKESH

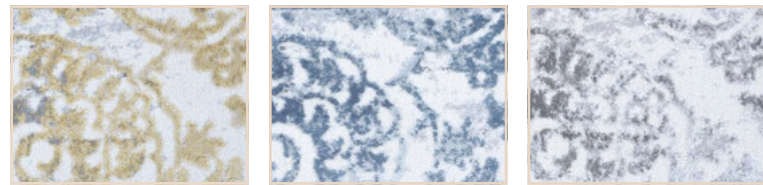
**BRAND** Creations™  
**PILE** 100% Heat-Set Courtron™ Polypropylene  
**WEAVE** Face-to-Face Woven Wilton  
**WIDTH** 13'2" (4 Meters)

*Available in:* Plum, Glacier, Charcoal, Latté, Cappuccino and Iceberg (shown)



## DARING

*Available in:* Urchin Gold, Aegean Blue and Jetty Stone



## ANTIQUITY

*Available in:* Urchin Gold, Aegean Blue and Jetty Stone





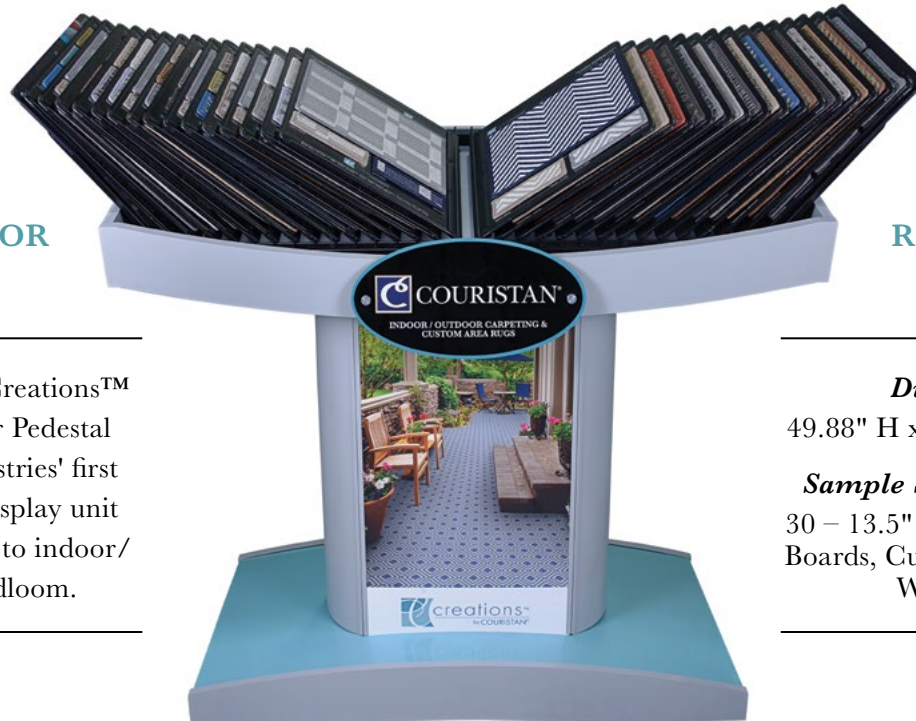
# CREATIONS™

## INDOOR/OUTDOOR PEDESTAL DISPLAY UNIT AN *EXCLUSIVE* MERCHANDISING OPPORTUNITY

**OVER 30  
INDOOR/OUTDOOR  
PRODUCTS**

**WIDTHS  
RANGING FROM  
12' TO 16'4"**

Introducing our Creations™  
Indoor/Outdoor Pedestal  
Display, the industries' first  
merchandising display unit  
dedicated entirely to indoor/  
outdoor broadloom.



***Dimension:***

49.88" H x 56.06" W x 23" D

***Sample Size-Dimension:***

30 – 13.5" W x 18" L Product  
Boards, Custom Rug Program  
Wing Cards

VISIT US

## UPCOMING MARKETS

### Las Vegas Market

July 29 – August 2, 2018 | World Market Center

### NEW SHOWROOM!

Building B, B360, 3<sup>RD</sup> Floor

### New York Home Fashions Week

Sept. 24 – 27, 2018 | 230 5th Ave., New York NY

Suite 1010, 10<sup>TH</sup> Floor

### Casual Market Chicago

Sept. 25 – 28, 2018 | Chicago Merchandise Mart

Booth 7-4029, 7<sup>TH</sup> Floor

#beautiful

## PROMOTIONS

### COURISTAN ANNOUNCES DATES FOR FALL 2018 "SAVINGS EVENT" AND SALE PERIOD PROMOTIONS

For a limited time only, from September 1st – September 30th, Couristan's entire array of handmade and power-loomed area rugs will be available at their lowest dealer pricing of the year as part of the Fall 2018 "Savings Event" Program.

Contact your Couristan Territory Manager today about our "Savings Event" Program packages, pricing, minimum purchase requirements, complete co-op advertising opportunities and added merchandising benefits.

Be sure to stock up in time for our FALL AREA RUG  
NATIONAL SALE PERIOD scheduled for  
October 1st – 31st.



WALL-TO-WALL CARPET | AREA RUGS  
ROLL RUNNERS | CUSTOM RUGS

Two Executive Drive, Fort Lee, New Jersey 07024 | 800.223.6186 | couristan.com