



# CASUAL SURROUNDINGS

Sensual and Tactile  
Hand-Crafted Collections



 **COURISTAN<sup>®</sup>**  
*Inspired by Life*

# SEEK YOUR OWN PERSONAL SANCTUARY

Offering a breathtaking balance between down-home comfort and bold, fashion-forward design, Couristan has a dynamic assortment of casual-contemporary area rugs that enrich any environment with a sense of pure warmth and refreshing verve. Visually captivating, these area rugs feature artisan-crafted details that add a special touch of luxury to each invigorating look. Textured accents are the hallmark of these indulgent designs, showcasing various types of toe-curling, tactile elements that create a welcoming foundation for spaces in the home where family and friends naturally gather.

Though lavish in their construction, these hand-crafted, hand-knotted, hand-tufted, hand-loomed and hand-woven area rugs complement a relaxed lifestyle, ideal for interiors with a calm, leisurely atmosphere. With a wide range of choices, from tranquil tones and soothing free-form motifs to passionate, colorful patterns bursting with personality, these enlightened fashions infuse inspiration into any room. Available in a range of low-to-modest price points, these fabulous floor covering finds utilize a full range of fibers, including wool, polyester, viscose, cotton, jute and repurposed materials.

Transforming cold spaces into coveted, cozy getaways, each of the collections featured in this brochure will excite the senses and provide a renewed perspective on the modern domestic oasis.

## **FEATURED ON COVER:**

TOP SETTING: SHIBUI 5696/0967 ITAJIME/INDIGO  
TOP LEFT: CHALET 9485/0458 DIAMONDBACK/DESERT MOON  
BOTTOM SETTING: CLOVER 4053/0303 GALWAY/WHISKEY  
BOTTOM LEFT: QUIXOTE 0443/0065 VALENCIA/TOMATINO



# TABLE OF CONTENTS

Casual Surroundings

*Sensual and Tactile Hand-Crafted Collections*

\$\$\$\$

---

CHALET*	1-6
CLINTON HILL SHAG*	7-8
CLOVER	9-10
CRAWFORD*	11-14
LIMA	15-17
NATURE'S ELEMENTS*	18-23
QUIXOTE*	24-26
REVIVAL	27-29
SHIBUI*	30-31
SICILY	32-34
XOCHI	35-36

## CUSTOM AREA RUGS

---

\* Indicates Area Rug Collection  
Featured in this Brochure  
May be Special Ordered in Custom Sizes.

*Please Check Size Availability of Each Design  
Prior to Placing an Order.*

# CHALET *collection*

Cowhide Leather Area Rugs



Materials Sourced Ethically

Unique Modern Stripe,  
Abstract and Geometric Designs

Felt Backing to Ensure Quality Durability  
and Lasting Beauty

Pile Height: No Pile (Animal Skin)

Hand-Crafted in India

DIAMONDS, HOMESTEAD, MEANDER, PLANK DESIGNS STOCKED SIZES

2' x 4' | 3'6" x 5'6" | 5'6" x 8' | 8' x 11' | 9'6" x 13'

BLOCKS, CELESTIAL, DIAMONBACK, OASIS, PIXELS, TETHER, TILE DESIGNS STOCKED SIZES

2' x 4' | 3'4" x 5'4" | 5'4" x 8' | 8' x 11'4" | 9'4" x 13'4"

MOO-NSTRUCK, REDINGOTE DESIGN STOCKED SIZES

7' x 7'4"

*\*ALL SIZES ARE APPROXIMATE*



**0027/0101**  
PLANK/GREY-IVORY



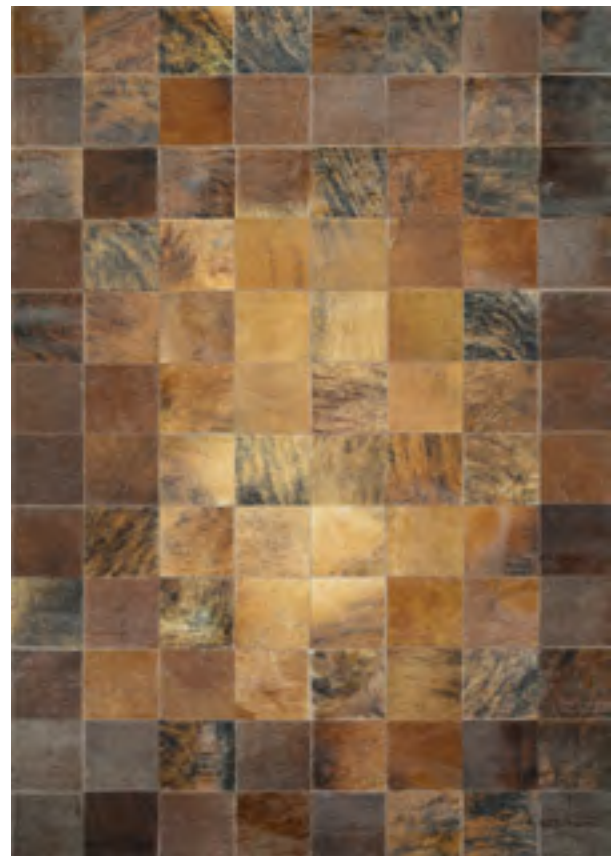
**0027/0404**  
PLANK/IVORY



**0027/0505**  
PLANK/BEIGE-BROWN



**0348/0611**  
TILE/IVORY



**0348/1579**  
TILE/BROWN



**0395/9276**  
BLOCKS/IVORY



**0761/0800**  
REDINGOTE/IVORY-BLACK



**0761/0920**  
REDINGOTE/IVORY-BROWN



**3256/0174**  
DIAMONDS/IVORY-GREY



3259/0243  
MEANDER/BLACK-IVORY



3268/9017  
PIXELS/BROWN



9067/0167  
TETHER/NATURALS



9485/0458  
DIAMONDBACK/DESERT-MOON



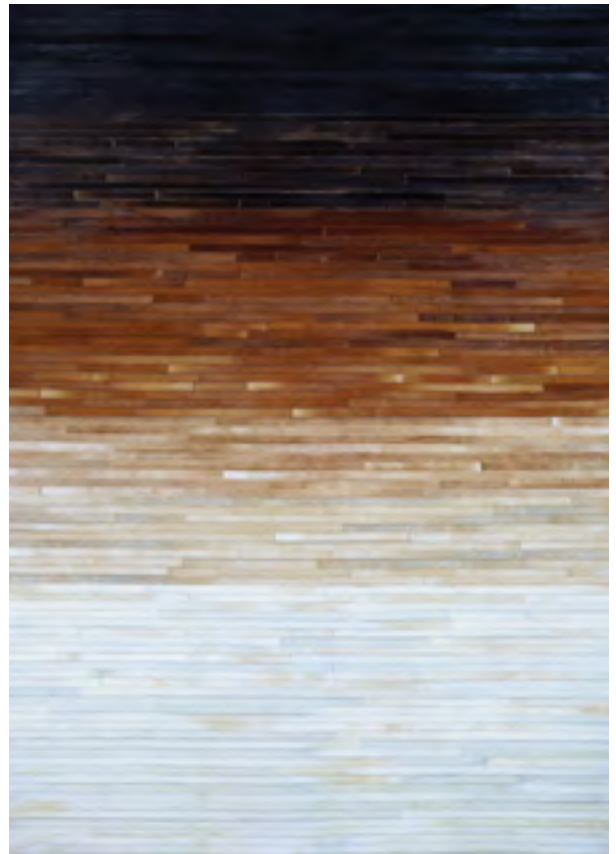
**9485/0488**  
DIAMONDBACK/DUSK



**9564/0564**  
OASIS/TWILIGHT



**9568/0596**  
CELESTIAL/NIGHT SKY



**9694/0901**  
HOMESTEAD/MULTI-DAWN





**9694/0902**  
HOMESTEAD/MULTI-DUSK



**9989/0110**  
MOO-NSTRUCK/BLACK



**9989/0220**  
MOO-NSTRUCK/PEPPER



**9989/0330**  
MOO-NSTRUCK/ROSE GOLD

# CLINTON HILL SHAG *collection*

100% Ultra-Soft Polyester



Luxurious Shag Pile  
Featuring a Table-Tufted Construction  
for Added Depth and Texture  
Soft Color Palette  
Approximate Pile Height: 2.16"  
Hand-Crafted in China

STOCKED SIZES  
2' x 4' | 5'3" x 8' | 8' x 10'

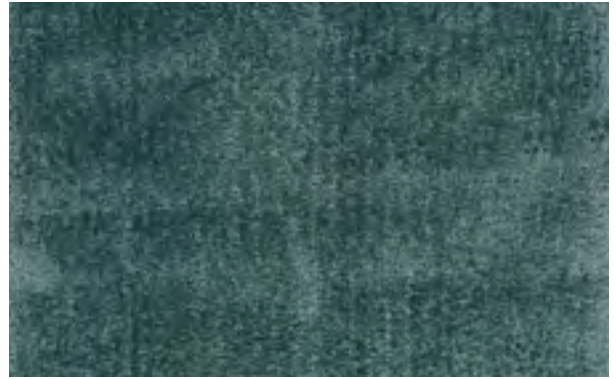
*\*ALL SIZES ARE APPROXIMATE*



**4144/0500**  
CHERRY BLOSSOM



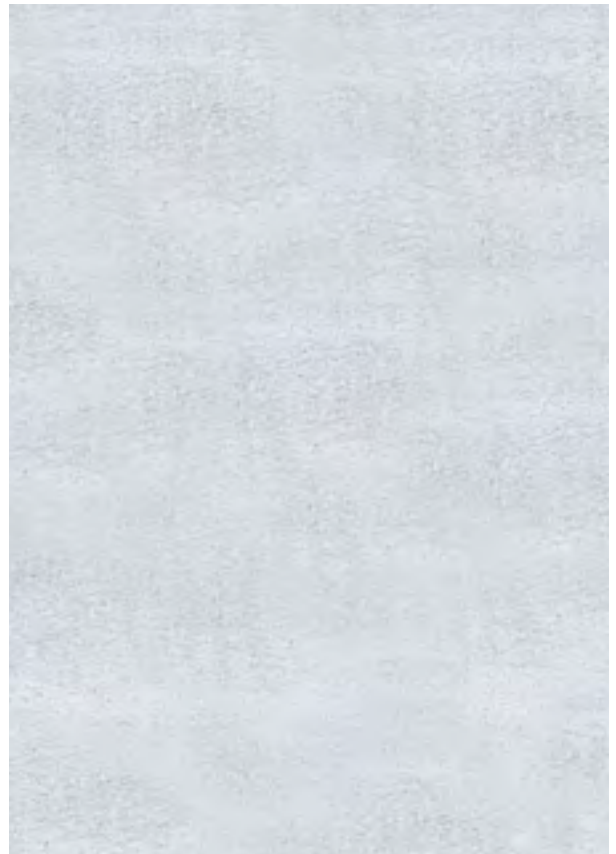
**4144/0600**  
GREYSTONE



**4144/0700**  
LIBERTY



**4144/0800**  
BARCLAY



**4144/0900**  
SNOW DAY

# CLOVER *collection*

100% Pure Wool



Hand-Woven Kilim Area Rugs

Featuring Tribal-Inspired Motifs,  
Designed as Casual Works of Art

Each Area Rug is Created by Utilizing an  
Over-Tufted “Embroidered” Technique for a  
Unique and Textured Appearance

Zero Pile Flat Weave

Hand-Woven in India

STOCKED SIZES

2' x 4' | 3' x 5' | 5' x 8' | 8' x 10' | 9' x 12'

*\*ALL SIZES ARE APPROXIMATE*



**4052/0202**  
KENMARE/FOAM



**4053/0303**  
GALWAY/WHISKEY



**4054/0404**  
DUBLIN/ISLE



**4059/0101**  
LIMERICK/HILLSIDE

# CRAWFORD *collection*

Blend of 80% Wool and 20% Nylon



Featuring a Dense Loop Pile that is  
Soft to the Touch

Fashion Forward Geometric and Floral  
Patterns Carefully Sequenced in a Series of  
Today's Most Desired Hues

Approximate Pile Height: .314"

Hand-Crafted in India

## STOCKED SIZES

2' x 3' | 3'5" x 5'5" | 5' x 8' | 8' x 10' | 2'3" x 7'6" Runner

*\*ALL SIZES ARE APPROXIMATE*



**3060/0381**  
AZALEA/BEIGE-NATURAL



**3060/0385**  
AZALEA/GREY-IVORY



**3061/0311**  
MADRID/NATURAL



**3062/0310**  
PRINCESS CUT/DENIM-IVORY



**3063/0303**  
TULIP LATTICE/BLUE-IVORY



**3063/0355**  
TULIP LATTICE/FLOWER POT-IVORY



**3064/0302**  
CONTEMPO GARDEN/PEWTER



**3064/0362**  
CONTEMPO GARDEN/HERRING BLUE





**3065/0305**  
ORNAMENT/MAGENTA



**3065/0310**  
ORNAMENT/BLUE JAY-IVORY



**3065/0325**  
ORNAMENT/POWDER BLUE



**3065/0339**  
ORNAMENT/IVORY-BLUE



**3065/0345**  
ORNAMENT/NATURAL-IVORY



**3065/0359**  
ORNAMENT/PEWTER

# LIMA *collection*

Featuring a Blend of Wools



Antique Moroccan-Inspired Designs

Hand-Knotted using a Persian Knot

Featuring a Unique Drop Stitch Technique that Provides Each Area Rug with Added Texture

Finished with Tasseled Edges for a Truly Antique Appearance

Approximate Pile Height: .591"

Hand-Knotted in India

## STOCKED SIZES

2' x 4' | 3'6" x 5'6" | 5'6" x 8'6" | 7'6" x 9'6" | 8'6" x 11'6"

*\*ALL SIZES ARE APPROXIMATE*



2309/3029  
AMAZON/MORNING MIST



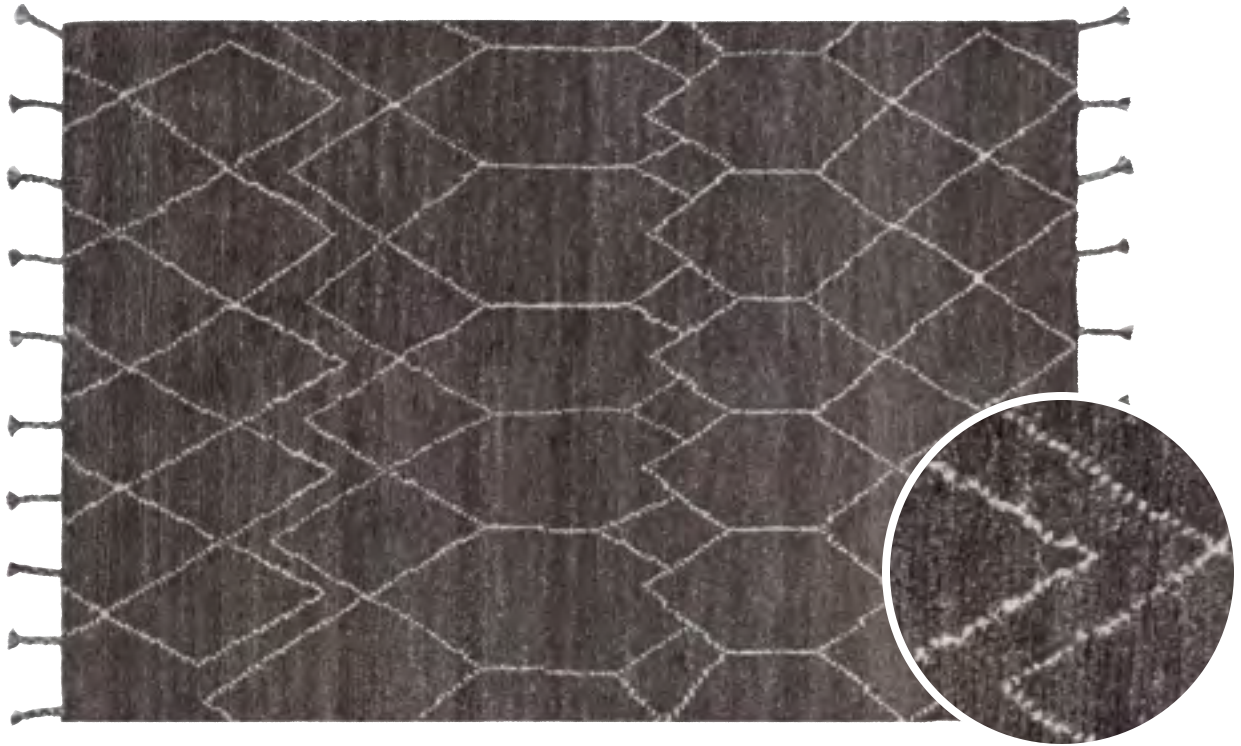
2311/3311  
ANDES/ELEVATION GREY



2314/3142  
INCA/STONE



2336/3336  
SECHIN/OPAL



**2337/3327**  
MACHU PICHU/EARTH



**2339/3339**  
AREQUIPA/ROSE WATER



**2388/3358**  
MISTI/ATMOSPHERE

# NATURE'S ELEMENTS *collection*

Featuring a Blend of Natural Materials Like Cotton, Jute and Grass



## STOCKED SIZES

2' x 3' | 3' x 5' | 4' x 6' | 5' x 8' | 6' x 9' | 7'10" x 10'10"

*\*ALL SIZES ARE APPROXIMATE*

*\*Please Note: 7293/3028 Henge/Straw is Available in 8' x 11' Size and Not Offered in 7'10" x 10'10"*

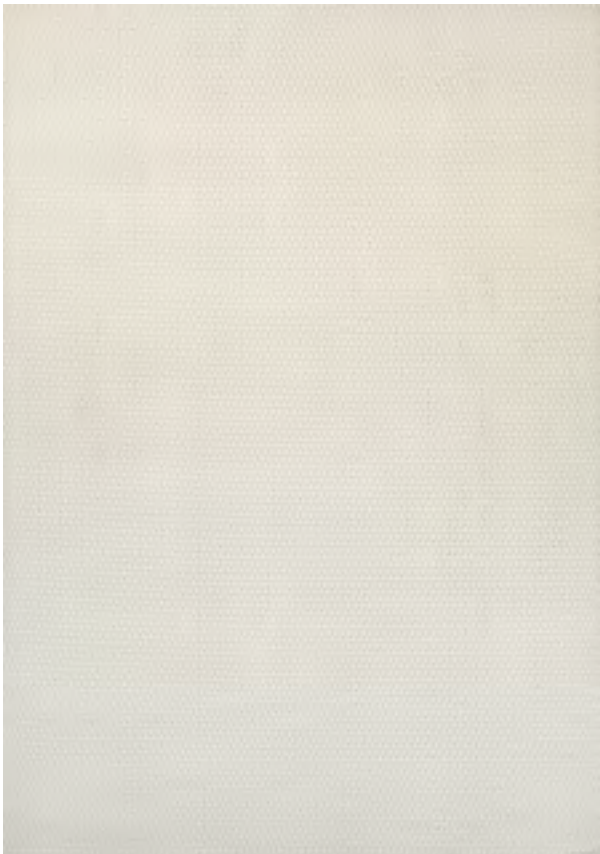
Textured Flatwoven Designs  
Durable and Lightweight  
Pile Height: No Pile (Flat Weave)  
Hand-Loomed in India



**7188/0431**  
DESERT/SAND DUNE-IVORY



**7189/0404**  
AIR/OATMEAL



**7189/0431**  
AIR/OFF WHITE



**7196/5102**  
SKYVIEW/DENIM



**7197/0611**  
TERRAIN/NATURAL BROWN-STONE



**7198/0712**  
CLOUDS/IVORY-OATMEAL-SKY BLUE



**7199/0822**  
ICE/BLACK



**7221/0165**  
SHADOWS/DENIM-MULTI



**7232/0442**  
DESERT/NATURAL-CAMEL

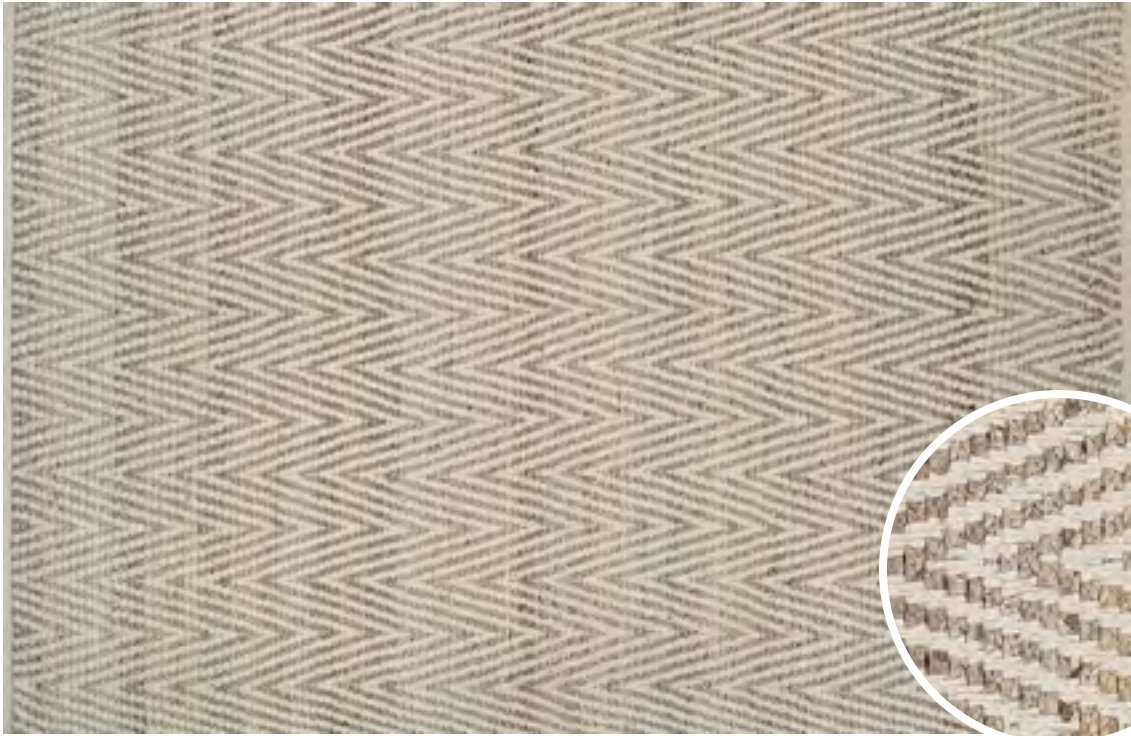


**7245/0237**  
GRAVITY/NATURAL-TAN



**7259/0343**  
RAY/NATURAL-IVORY





**7290/9060**  
FOOTHILLS/STRAW-TIMBER



**\*7293/3028**  
HENGE/STRAW



**7294/3125**  
AWNING STRIPES/STRAW-RED-WHITE



**7294/3155**  
AWNING STRIPES/STRAW-ARCTIC BLUE-WHITE



**7295/2400**  
LODGE/STRAW-TAUPE



**7295/2939**  
LODGE/STRAW-GREY

# QUIXOTE *collection*

Featuring a Unique Blend of Wools

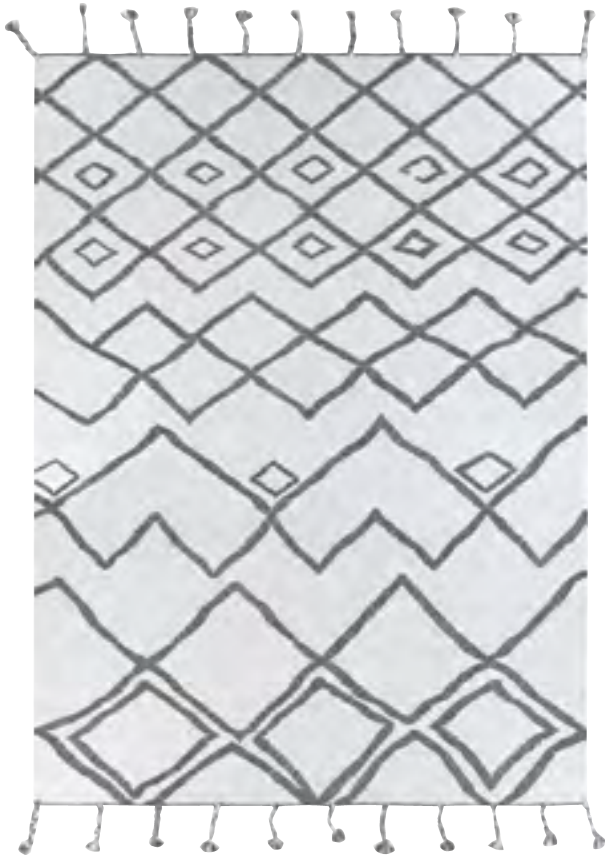


## STOCKED SIZES

2' x 4' | 3' x 5' | 5' x 8' | 8' x 10'

*\*ALL SIZES ARE APPROXIMATE*

Antique Moroccan-Inspired Designs  
Updated In a Casual Feel  
Hand-Woven Utilizing  
A Kilim Weaving Technique  
Finished with Braided Tasseled Edges  
Zero Pile Flat Weave  
Hand-Woven in India



0360/0059  
MADRID/TORO



0369/0061  
TOLEDO/BISCAY



0443/0043  
VALENCIA/FLAMENCO



0443/0065  
VALENCIA/TOMATINO



0443/0066  
VALENCIA/CASTILLE

# REVIVAL *collection*

Hand-Woven of Repurposed Textiles



Like Cotton, Wool & Denim  
All Designs Feature Ethnic &  
Geometric Patterns  
Zero Pile Flat Weave  
Hand-Woven in India

#### STOCKED SIZES

2' x 4' | 3' x 5' | 5' x 8' | 8' x 10'

*\*ALL SIZES ARE APPROXIMATE*



7346/0346  
LAKSHMI/DIWALI



7348/0348  
GANESHA/TUSK



7349/0349  
RANGOLI/DIWALI



7353/0353  
ONAM/UDAIPUR



7358/0835  
KALI/KRISHNA



# SHIBUI *collection*

100% Blended Wool



## STOCKED SIZES

2' x 4' | 5' x 8' | 6' x 9' | 8' x 10'

*\*ALL SIZES ARE APPROXIMATE*

Inspired By Ancient Japanese Shibori  
Tie-Dyed Designs

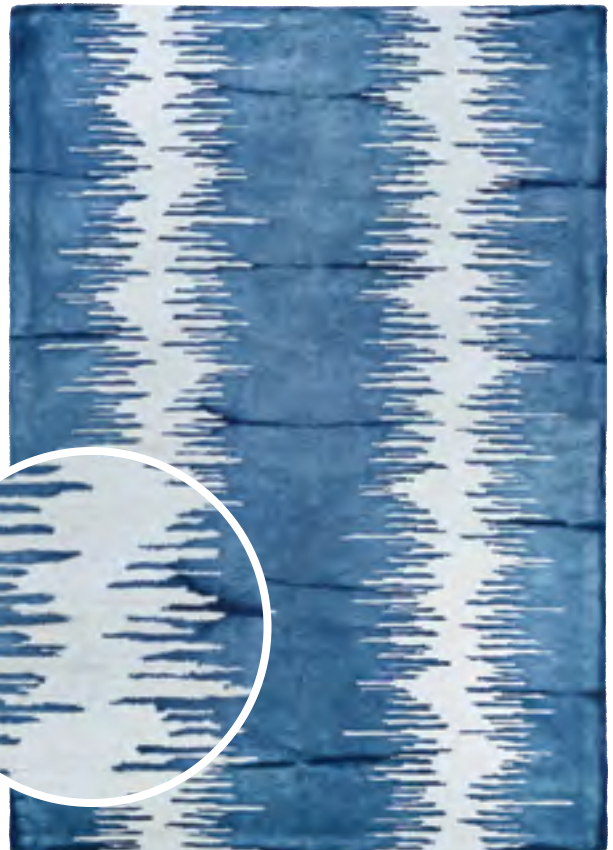
Each Design is Carefully Enhanced  
with a Vibrant Blue Color Palette for an  
Authentic Feel

Approximate Pile Height: .393"

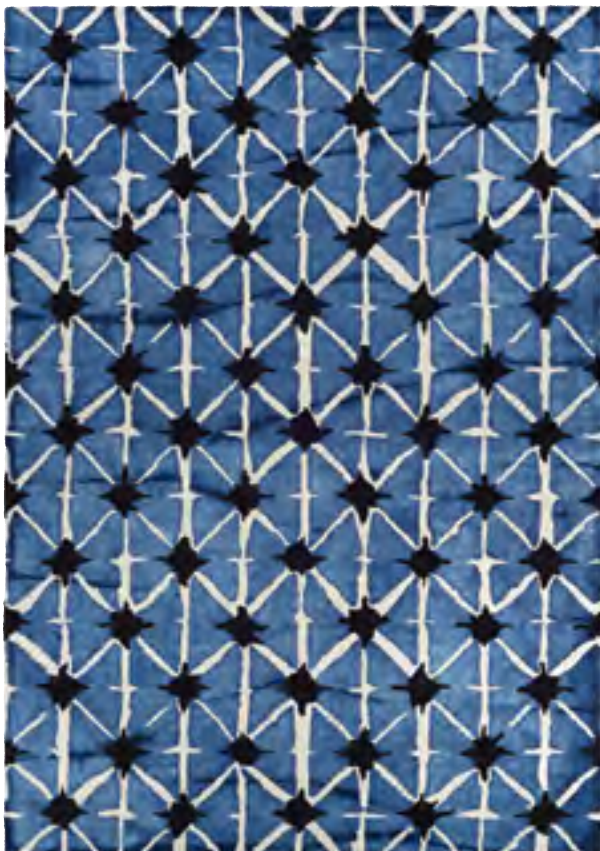
Hand-Tufted in India



4862/0626  
KARAMATSU/ETHER



4866/0486  
NUI/INK BLOT



5696/0967  
ITAJIME/INDIGO



6352/0526  
KUMO/HAZE

# SICILY *collection*

70% Wool / 20% Polyester / 10% Cotton



## STOCKED SIZES

2' x 4' | 5' x 8' | 8' x 10' | 9' x 12'

*\*ALL SIZES ARE APPROXIMATE*

Blends of Rich Colorations Add to each Area Rug's Textured, Nubby Appearance

Perfect for Casual, Transitional and Modern Areas within the Home

Zero Pile Flat Weave

Hand-Loomed in India



**2363/3010**  
MAGLIONE/ONDA



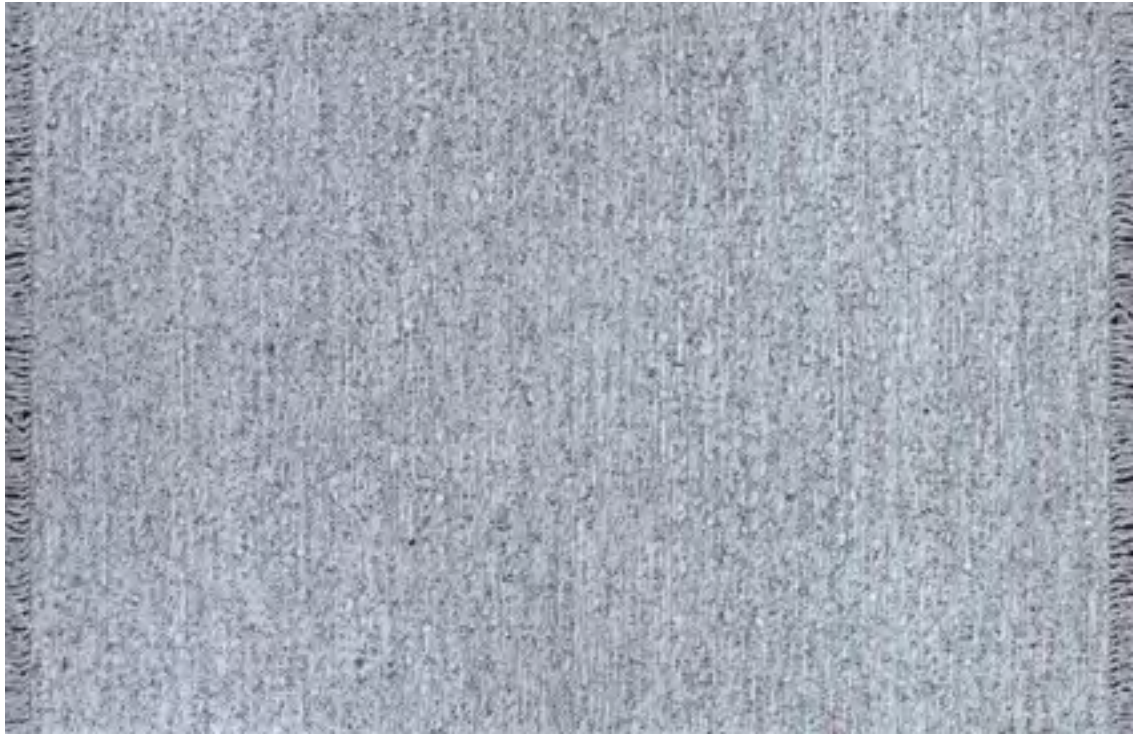
**2363/3020**  
MAGLIONE/CORALLO



**2363/3030**  
MAGLIONE/AMALFI



**2363/3040**  
MAGLIONE/CAPPUCCINO



**2363/3070**  
MAGLIONE/NATURALE



**2363/3080**  
MAGLIONE/ARGENTO

# XOCHI *collection*

Hand-Crafted of Repurposed Textiles



Like Cotton & Denim with Over-Tufted  
Accents of Wool  
Ethnic-Inspired Geometric Patterns  
Approximate Pile Height: 1.18"  
Hand-Crafted in India

STOCKED SIZES  
2' x 4' | 5' x 8' | 6' x 9' | 8' x 10'

*\*ALL SIZES ARE APPROXIMATE*



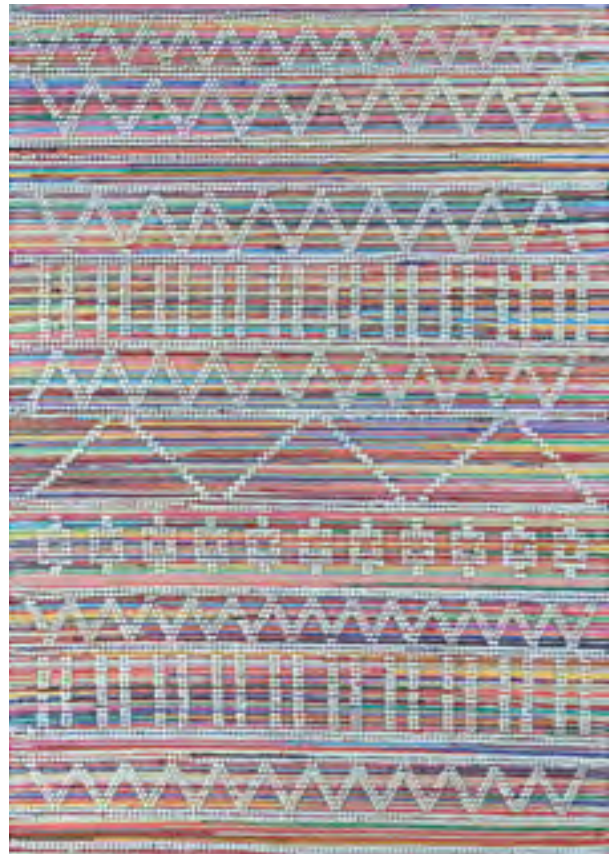
**5334/0334**  
LUPITA/DULCE



**5335/0335**  
TRAJINERA/VIVA



**5339/0339**  
CHINELO/DULCE



**5340/0340**  
MARISOL/VIVA

# PULSE PRODUCT PORTFOLIO



FEBRUARY 2019



TWO EXECUTIVE DRIVE, FORT LEE, NEW JERSEY 07024 • 800.223.6186 • [COURISTAN.COM](http://COURISTAN.COM)

*Wall-To-Wall Carpet • Area Rugs • Roll Runners • Custom Rugs*

