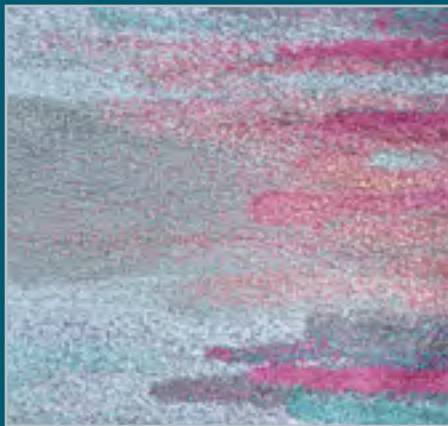




HOME RETREAT

Fashion and Value
Collections



 **COURISTAN[®]**
Inspired by Life

FABULOUS FINDS FOR THE FRUGAL FASHIONISTA

Finding fashions to perfectly achieve that special unique vision, while staying within a budget, is often a decorator's biggest challenge. With these vivacious and visually stunning designs, it is a proven fact that extraordinary style doesn't have to break the bank.

Attractive in price, design and quality, the eclectic fashions featured in this brochure are fit for practically any budget and showcase a variety of coveted trends in the home décor category. From classic Persian motifs to modern-casual textures, there are dozens of choices to accommodate a wide range of aesthetics from traditional to contemporary. Each of these superbly constructed power-loomed collections are made with highly durable, cost-conscious materials, like Courtron™ polypropylene, viscose and polyester, that will provide years of toe-curling enjoyment.

Adding a sense of laid-back luxury to any home, these outstandingly well-dressed designs will rejuvenate interiors with a special verve and reflect a personal style that has room to evolve.

FEATURED ON COVER:

TOP SETTING: RADIANCE 4104/0500 DONALBAIN/RIPTIDE

TOP LEFT: EASTON 6354/6696 CASTLE BLOCKS/STONE

BOTTOM SETTING: EVOLUTION 4992/0749 BASMA/CINNABAR

BOTTOM LEFT: GAIA 3852/0825 DAYBREAK



TABLE OF CONTENTS

Home Retreat

Fashion and Value Collections

\$\$\$

BROMLEY*	1-5
BRUGES	6-9
CALINDA	10-13
CIRÉ*	14-16
EASTON	17-27
EUROPA	28-30
EVEREST*	31-35
EVOLUTION	36-38
GAIA	39-41
GYPSY	42-45
KALEIDOSCOPE	46-48
MARINA*	49-56
NOMAD	57-59
RADIANCE	60-62
SERENITY	63-66
SEVILLA	67-69
URBAN SHAG	70-72

*** Selected Area Rugs Featured in this Brochure
are Available in Matching Special Shapes,
Roll Runners and/or Coordinating
Wall-To-Wall Carpeting.**

*Please Check Size Availability of Each Design
Prior to Placing an Order.*

BROMLEY *collection*

A Blend of Wool, Courtron™ Polypropylene and Polyester



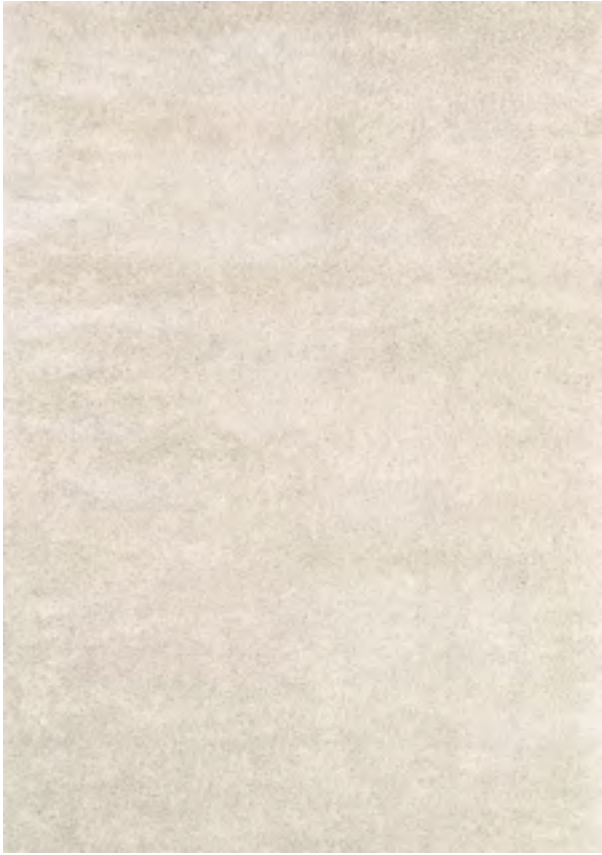
Featuring a Plush, Heavy Surface Pile
Thickness of Differing Fiber
Usage Creates a Unique Textured
Appearance and Feel
Solids and Moroccan-Inspired Designs
Pile Height: 1.81"
Power-Loomed in Belgium

STOCKED SIZES

2' x 3'11" | 3'11" x 5'6" | 5'3" x 7'6" | 7'10" x 11'2" | 9'2" x 12'9" | 2'2" x 7'10" Runner

**ALL SIZES ARE APPROXIMATE*

■ Design is Available in Coordinating Wall-to-Wall Carpeting



4311/0100
BRECKENRIDGE/SNOW ■



4311/0110
BRECKENRIDGE/FROST ■



4311/0120
BRECKENRIDGE/BRONZE ■



4311/0509
BRECKENRIDGE/NAVY-GREY



4311/0910
BRECKENRIDGE/COPPER ■



4311/0920
BRECKENRIDGE/ASH ■



4315/0102
PINNACLE/IVORY-CAMEL



4315/0600
PINNACLE/CAMEL-IVORY



4316/0336
DAVOS/SNOW-BROWN



4317/0106
WHISTLER/BLUE-SNOW



4319/2358
NOVIA/IVORY-CARAMEL-BLACK



4331/7459
GIO/NAVY-GREY



4353/3159

JAKARTA/IVORY-CARAMEL-BLACK



4357/5100

KYOTO/SNOWFLAKE-BRONZE



BRUGES *collection*

100% Ultra-Soft Polyester



STOCKED SIZES

2' x 3'7" | 3'11" x 5'6" | 5'3" x 7'6" | 7'10" x 10'9" | 2'7" x 7'6" Runner

**ALL SIZES ARE APPROXIMATE*

Face-to-Face Wilton Woven
Ethnic-Inspired Designs,
Updated with a Modern Twist
Featuring a Beautiful of-the-Moment
Color Palette
Fringed Edges
Pile Height: .275"
Power-Loomed in Belgium



8122/0614
TOREKEN/LINEN



8122/0661
TOREKEN/MOSS



8122/0691
TOREKEN/FLAX



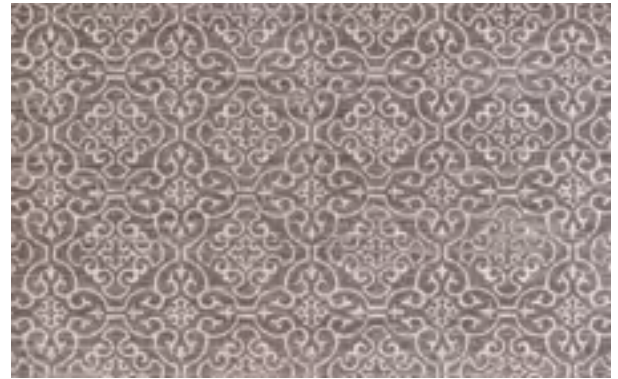
8134/0712
BELFRY/LINEN-BLOSSOM



8722/0712
GROTE/LINEN



8825/0614
LIEGE/LINEN-NOUGAT



8825/0691
LIEGE/FLAX



8825/0702
LIEGE/BLOSSOM



8828/0603
DIAMANTE/RIVER



8828/0606
DIAMANTE/MOSS



8828/0619
DIAMANTE/LINEN



8828/0690
DIAMANTE/CHOCOLATE



8828/0702
DIAMANTE/BLOSSOM

CALINDA *collection*

A Unique Blend of 50% Heat-Set Courtron™ Polypropylene and 50% Polyester



STOCKED SIZES

2' x 3' | 3'3" x 5'3" | 5'3" x 7'6" | 6'6" x 9'6" | 7'10" x 10'10" | 9'2" x 12'5"
2'3" x 7'6" Runner

**ALL SIZES ARE APPROXIMATE*

Creates a High/Low Appearance
in Each Area Rug

Face-to-Face Wilton Woven

Vintage-Inspired Designs Recreated
with a Contemporary Twist

A Full Range of Today's Most Sought-After
Colors Enhances the Appearance
of Each Design

Pile Height: .393"

Power-Loomed in Turkey



5173/0758
KINGSBURY/STEEL BLUE-IVORY



5193/0747
EMMETT/GOLD-SILVER-IVORY



5175/0747
SUMMER BLISS/GOLD-SILVER-IVORY



5175/0758
SUMMER BLISS/STEEL BLUE-IVORY



5176/0747
MONTEBELLO/GOLD-SILVER-IVORY



5176/0758
MONTEBELLO/STEEL BLUE-IVORY



5178/0747
MARLOWE/GOLD-SILVER-IVORY



5178/0758
MARLOWE/STEEL BLUE-IVORY



5179/0747
GRAND DAMASK/GOLD-SILVER-IVORY



5179/0758
GRAND DAMASK/STEEL BLUE-IVORY



5195/0747
SAMOVAR/GOLD-SILVER-IVORY



5195/0758
SAMOVAR/STEEL BLUE-IVORY

CIRÉ *collection*

Viscose and Courtron™ Polypropylene Chenille Yarn



STOCKED SIZES

2'1" x 3'7" | 3'11" x 5'5" | 5'3" x 7'6" | 7'10" x 11'2" | 2'7" x 7'6" Runner

SPECIAL SHAPES

7'10" Round

**ALL SIZES ARE APPROXIMATE*

Face-to-Face Wilton Woven

Rich, Jewel-Toned Color Palette

Chic Transitional Designs

with a High-Low Carved Effect

Plush, Textured Surface Adds Dimension

Pile Height: .157"

Power-Loomed in Belgium



1438/6539

CHERRINGTON/GREIGE-ANTIQUE CREAM



3836/2590

ESTATE/CANVAS-LINEN



3836/8552

ESTATE/MONARCH BLUE



3855/5565

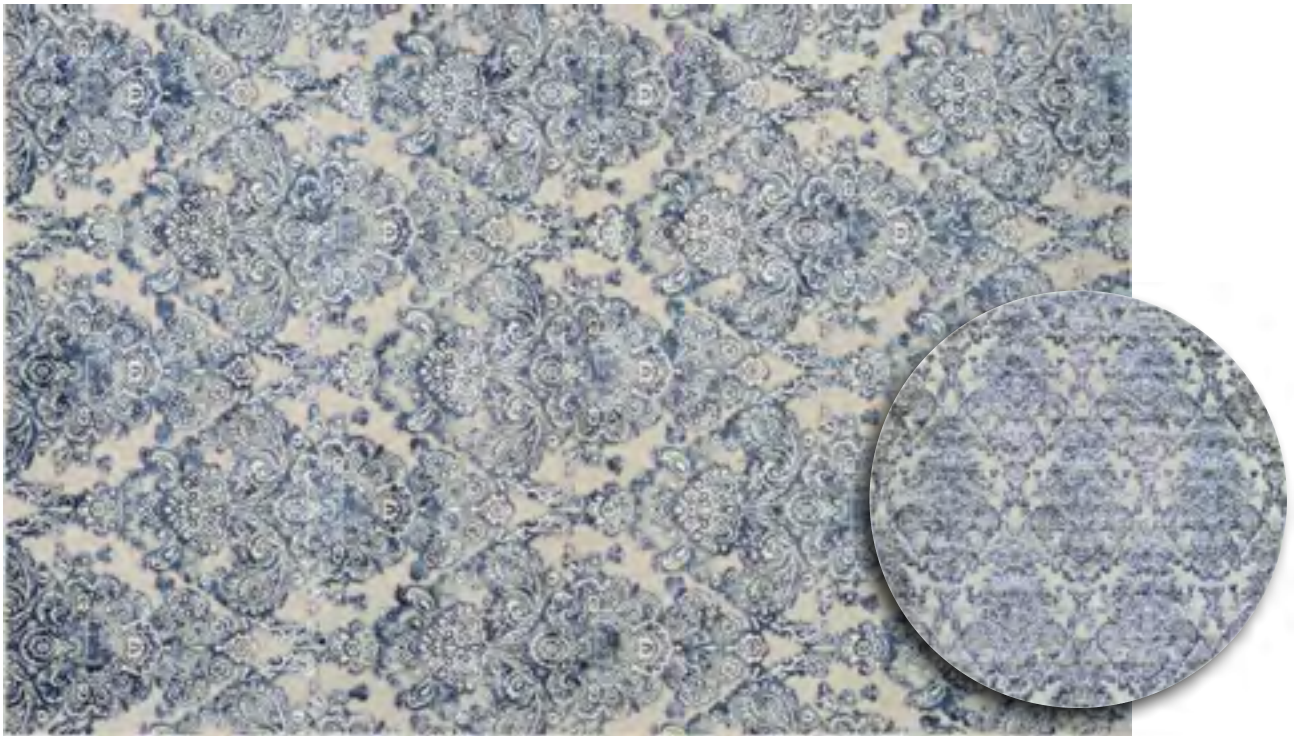
AURORA REGAL/MUSHROOM-ANTIQUE CREAM



3894/6259
VICTORIA MANSION/SADDLE



3894/8585
VICTORIA MANSION/MONARCH BLUE



3929/6561
ROYAL GATE/LACE

EASTON *collection*

100% Heat-Set Courtron™ Ultra-Fine Polypropylene



Face-to-Face Wilton Woven
Designs are Created Using a Multi Point
and Loom-Carved Technique
Soft Luxurious Finish In Excess of a
Million Points of Yarn Per Square Meter
Pile Height: .35"
Power-Loomed in Belgium

STOCKED SIZES

2' x 3'7" | 3'11" x 5'3" | 5'3" x 7'6" | 6'6" x 9'6" | 7'10" x 11'2" | 9'2" x 12'5"
2'7" x 7'10" Runner

*ALL SIZES ARE APPROXIMATE



6327/6823
SUFFOLK/BLACK-GREY



6335/3151
WINSLET/NAVY-SAPPHIRE



6335/6343
WINSLET/BEIGE-BLACK



6337/3282
ADALINE/ESPRESSO-CREAM



6337/5191
ADALINE/NAVY-CREAM



6342/6151
SURREY/BONE-MULTI



6342/6282
SURREY/BONE-EARTHTONES



6343/6151
DISTRESS PLANKING/BARK-NATURAL



6343/8282
DISTRESS PLANKING/MOSS-DENIM



6344/6676
FRISSON/IVORY



6345/5676
OGEE/DUSK BLUE



6347/4343
SKYSCRAPER/BONE-NATURALS



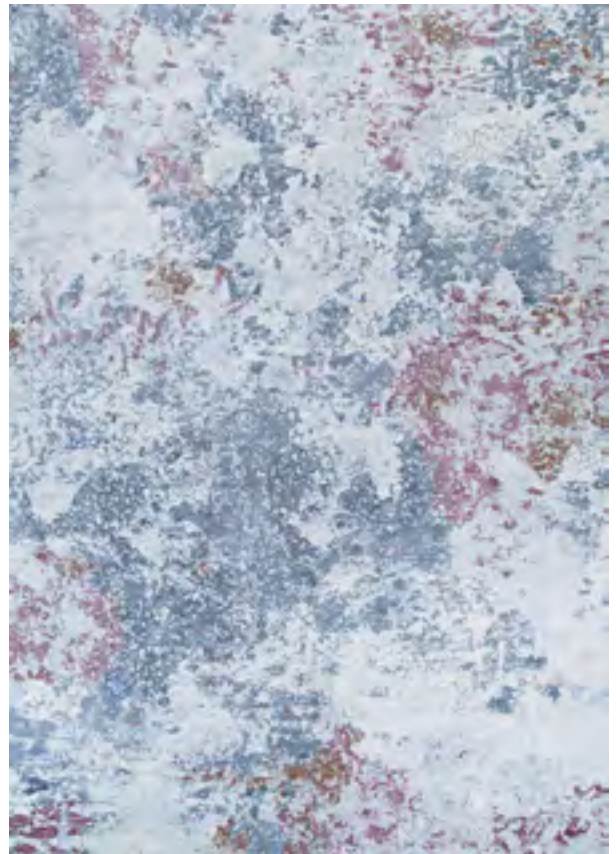
6349/6191
FLORAL CHIC/BONE-MULTI



6354/6696
CASTLE BLOCKS/STONE



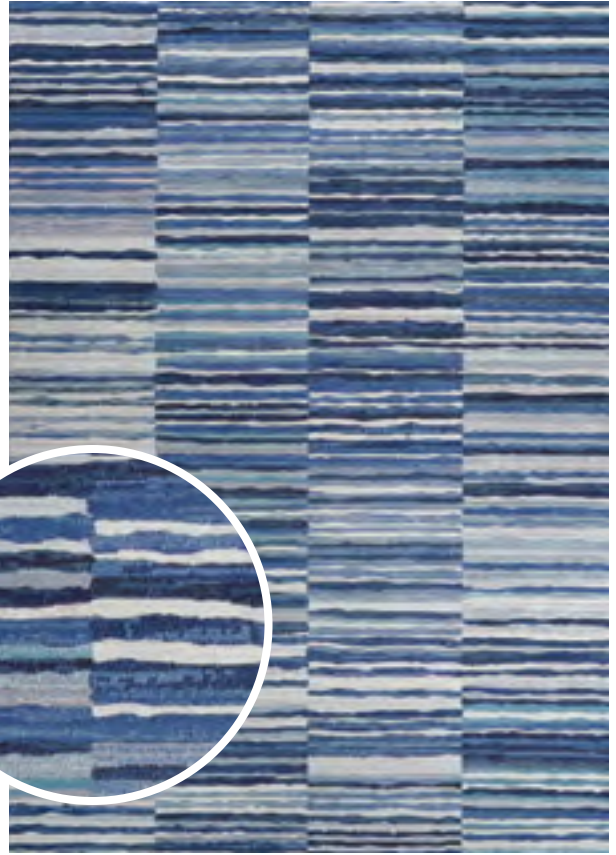
6362/6656
ABSTRACT MOSAIC/SLATE



6363/9616
CLOUD COVER/DUSK



6365/5626
ATMOS/MIST



6371/5161
TALAVERA/AQUARIUS



6373/9666
GRAVELSTONE/PEWTER



6377/7676
BOUNTIFUL/PEWTER



6387/5897
ABSTRACT MURAL/ANTIQUE CREAM



6398/0745
SHIMMERING/EARTHTONES-MULTI



6398/9191
SHIMMERING/BONE-MULTI



6437/6575
ANTIQUE LACE/FLAX



6437/7656
ANTIQUÉ LACE/OYSTER



6590/4343
MIRADOR/GREY



6594/6424
CAMILLA/ANTIQUÉ CREAM-GREY



6815/4343
MARIBEL/IVORY-GREY



6815/6454
MARIBEL/ANTIQUÉ CREAM-GREY



6822/3353
CAPELLA/BLACK-GREY



6822/3848
CAPELLA/BROWN-MULTI



6822/6575
CAPELLA/IVORY-LIGHT GREY



6842/6151
CHARLES/BONE-BLUE-MULTI



6843/9191
WATERCOLORING/BONE-MULTI



6989/9861
CITY BRICKS/GRAFFITI BLUE



7392/5454
MAYNARD/ANTIQUÉ CREAM-TEAL



7928/4848
ZEN/EARTHTONES



7933/6868
ROTHBURY/BEIGE-MULTI



7964/4488
VIBE/DUSK

EUROPA *collection*

100% Ultra-Soft Polyester



STOCKED SIZES

2' x 3'11" | 3'3" x 5'6" | 5'3" x 7'6" | 6'7" x 9'6" | 7'10" x 10'9" | 9'10" x 13'
2'2" x 7'7" Runner

**ALL SIZES ARE APPROXIMATE*

Face-to-Face Wilton Woven
Elegant Abstract Designs are Highlighted
in Poly-Viscose

Each Design has a Subtle Sheen
and a High/Low Texture

Pile Height: .275"

Power-Loomed in Turkey



0479/4790
AMALTHEA/MIST



0485/4485
CALISTO/STARLIGHT



0487/4807
GANYMEDE/GALAXY



0945/9540
ELARA/MIST



0955/9505
HIMALIA/LUNA GREY

EVEREST *collection*

100% Heat-Set Courtron™ Polypropylene



Face-to-Face Wilton Woven

One Million Points of Yarn
Per Square Meter

Soft, Luxurious Finish

Pile Height: .35"

Power-Loomed in Belgium and Bulgaria

STOCKED SIZES

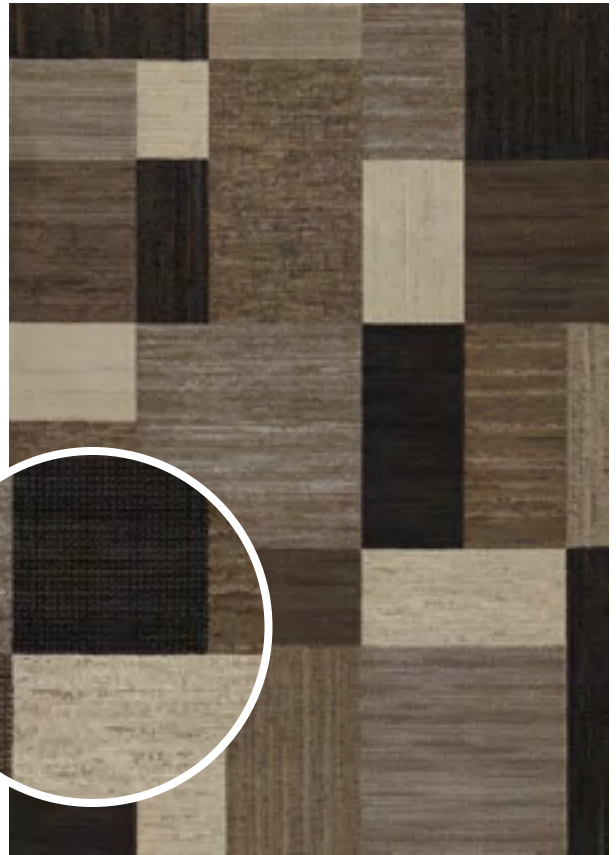
2' x 3'7" | 3'11" x 5'3" | 5'3" x 7'6" | 7'10" x 11'2" | 9'2" x 12'5" | 2'7" x 7'10" Runner

**ALL SIZES ARE APPROXIMATE*

- | | |
|--|--|
| ■ Design is Available in a Matching 26" Wide Roll Runner | ■ Design is Available in a Matching 31" Wide Roll Runner |
| ■ Design is Available in Coordinating Wall-to-Wall Carpeting | ■ Design is Loom-Carved with a Multi-Point Weaving Technique |



6033/6323
GRAPHITE/SEA MIST ■



6303/4343
GEOMETRICS/BROWN-MULTI ■ ■



6303/6141
GEOMETRICS/NAVY-BONE ■



6303/6454
GEOMETRICS/TAN-TEAL ■ ■



6316/6333

RETRO DAMASK/GREY-BLACK ■



6340/6323

PERSIAN ARABESQUE/CHARCOAL-IVORY ■ ■



6340/7565

PERSIAN ARABESQUE/BONE



8972/3363
ROSETTA/EBONY ■ ■



8972/6322
ROSETTA/IVORY ■ ■



EVOLUTION *collection*

100% Heat-Set Courtron™ Polypropylene



STOCKED SIZES

2' x 3'7" | 3'6" x 5'3" | 5'3" x 7'10" | 7'10" x 10'7" | 9'10" x 13'
2'2" x 7'10" Runner

*ALL SIZES ARE APPROXIMATE

Face-to-Face Wilton Woven
Striking Twists on Traditional Patterns
Utilizes a Multi-Hued Polypropylene
to Enhance the Design, Giving it
a Modern Edge
Features a Unique Tasseled Fringe
Pile Height: .236"
Power-Loomed in Turkey



4937/0379
TAMBUR/QUARTZ



4991/0792
ILMOK/ZIRCON



4992/0394
BASMA/LANGITE



4992/0749
BASMA/CINNABAR



4993/0791
NURATA/AMETHYST



4994/0733
BUKHARA/SERANDITE

GAIA *collection*

A Unique Blend of Polyester and Courtron™ Polypropylene



Face-to-Face Wilton Woven

A Collection of Colorful Shag Area Rugs,
Featuring Abstract Designs That Mirror the
Elements

Approximate Pile Height: 1.97"
Power-Loomed in Egypt

STOCKED SIZES

3'3" x 5'5" | 5'3" x 7'6" | 6'6" x 9'6" | 7'10" x 10'10" | 9'10" x 12'10"
2'2" x 7'6" Runner

**ALL SIZES ARE APPROXIMATE*



3723/0723
OCEAN



3724/0724
TWILIGHT



3852/0825
DAYBREAK



3922/0392
SUNSET



4728/0728
FOG

GYPSY *collection*

100% Heat-Set Courtron™ Polypropylene



STOCKED SIZES

3'6" x 5'6" | 5'3" x 7'6" | 8' x 10'9" | 2'3" x 7'6" Runner

**ALL SIZES ARE APPROXIMATE*

Cross-Woven on Wilton Looms
Each Traditional and Contemporary Design
is Harmonized in a Carefully Sequenced
Palette of Up to 48 Modern Hues

Soft, Low Pile

Pile Height: .354"

Power-Loomed in Turkey



A035/0232
ROYALE/MOCHA-MULTI



A168/0273
ELY/AQUA-MULTI-IVORY



A700/0287
COLOGNE/BROWN-MULTI



A702/0213
CHARTRES/ULTRAMARINE-MOCHA



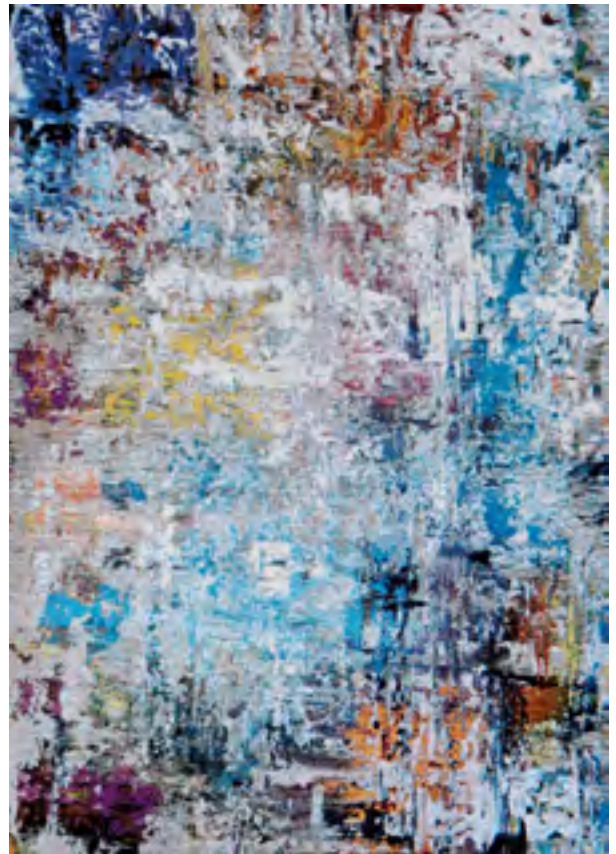
A711/0233

RETRO DAMSEL/IVORY-MUSHROOM-MULTI



A765/0233

REIMS/MAGENTA-BONE



AV29/0228

AQUARELLE/BONE-MULTI



AV30/0227
ARTISTS PALETTE/OYSTER-MULTI



AV32/0236
STREET ART/BONE-MULTI

KALEIDOSCOPE *collection*

100% Polyester



STOCKED SIZES

2' x 3'11" | 3'11" x 5'3" | 5'3" x 7'6" | 6'6" x 9'6" | 7'10" x 10'10" | 2'2" x 7'7" Runner

**ALL SIZES ARE APPROXIMATE*

Face-to-Face Wilton Woven
Machine-Crafted with a Unique Blend
of Polyester Yarns
Featuring Shrink Yarn Accents
to Add a High/Low Texture
Ethnic and Abstract Designs
Pile Height: .354"
Power-Loomed in Turkey



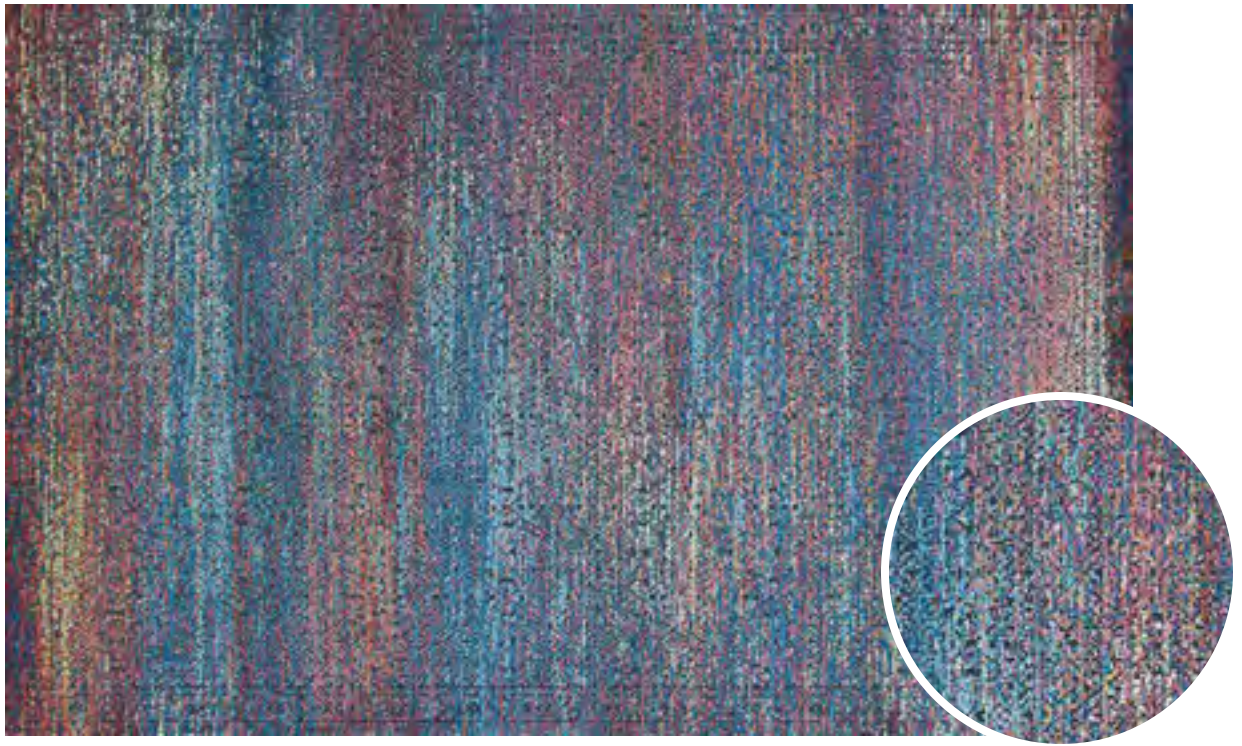
0023/0233
EMPYREAN/NIGHTFALL



0024/0420
SABALAN/MIRAGE



0897/0877
JAVA/GINGER



5549/0549
PENUMBRA/ECLIPSE



6600/0600
CELESTIAL/OASIS

MARINA *collection*

100% Heat-Set Courtron™ Polypropylene



Face-to-Face Wilton Woven
Designs are Created Using a Drop Stitch
and Double Point Weaving Technique

Soft, Luxurious Finish
In Excess of a Million Points of
Yarn Per Square Meter

Pile Height: .393"
Power-Loomed in Belgium

STOCKED SIZES

2' x 3'11" | 3'11" x 5'6" | 5'3" x 7'6" | 6'6" x 9'6" | 7'10" x 10'9" | 9'2" x 12'9"
2'2" x 7'10" Runner

**ALL SIZES ARE APPROXIMATE*

■ Design is Available in a Matching 26" Wide Roll Runner ■ Design is Available in Coordinating Wall-to-Wall Carpeting



1255/0110
BARLETTA/CHAMPAGNE



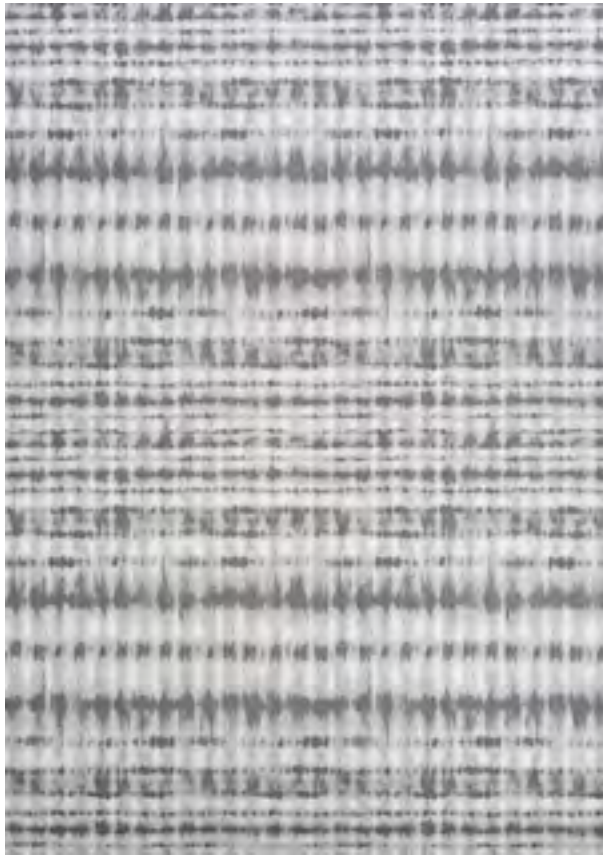
1255/0910
BARLETTA/PEARL-CHAMPAGNE



1256/0110
SIENA/CHAMPAGNE



1257/0225
SHIBORI/CONFEDERATE GREY-IVORY



1257/0719
SHIBORI/OYSTER-IVORY



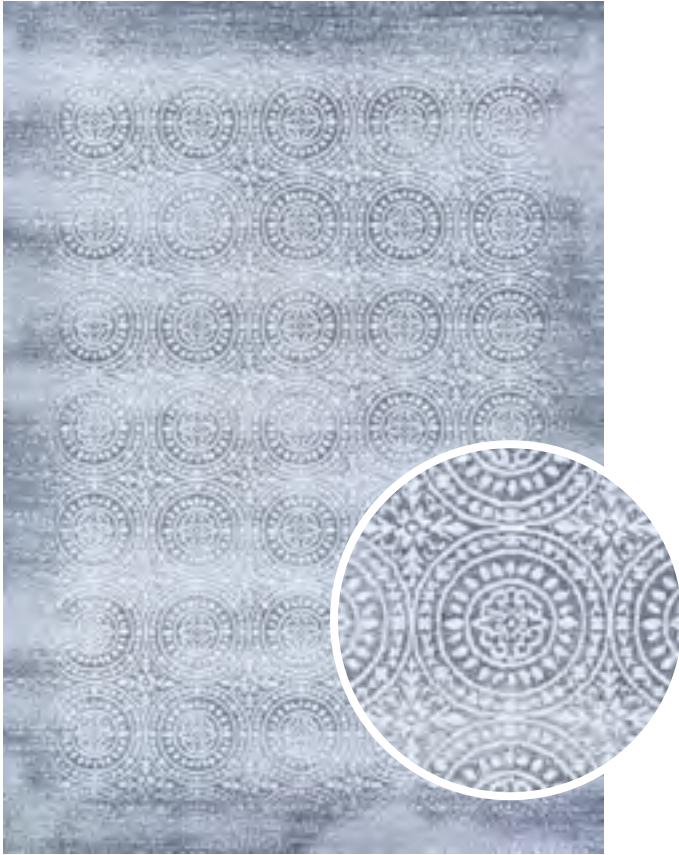
1259/0225
GRISAILLE/CONFEDERATE GREY-IVORY



1259/0910
GRISAILLE/PEARL-CHAMPAGNE



1264/0115
GARDEN PATCHWORK/OYSTER-PEARL



1267/0525
UNISON/SLATE BLUE-PEARL



1339/1230
MONTAGUE/OAK



1339/1399
MONTAGUE/BIRCH



1339/1911
MONTAGUE/HICKORY



8960/0100
ST. TROPEZ/CHAMPAGNE-PEARL ■ ■



8961/0100
MALTA/CHAMPAGNE



8962/0110
IBIZA/CHAMPAGNE ■ ■



8962/0120
IBIZA/OYSTER ■ ■



8962/0910
IBIZA/PEARL



8963/0100
CAPRI/OYSTER ■



8964/0910
CYPRUS/PEARL-CHAMPAGNE



8965/0130
CANNES/CHAMPAGNE



8973/0672
RIMINI/PEARL-CHAMPAGNE



8974/0535
LILLIAN/SLATE BLUE-OYSTER



8974/0567
LILLIAN/OYSTER-SLATE BLUE



8976/0515
GARDEN GATE/OYSTER-SLATE BLUE



NOMAD *collection*

100% Polyester with Poly Frisee Accents



Face-to-Face Wilton Woven
Simple Transitional and
Soft Contemporary Designs
Easy Fit for Any Décor
Pile Height: .433"
Power-Loomed in Belgium

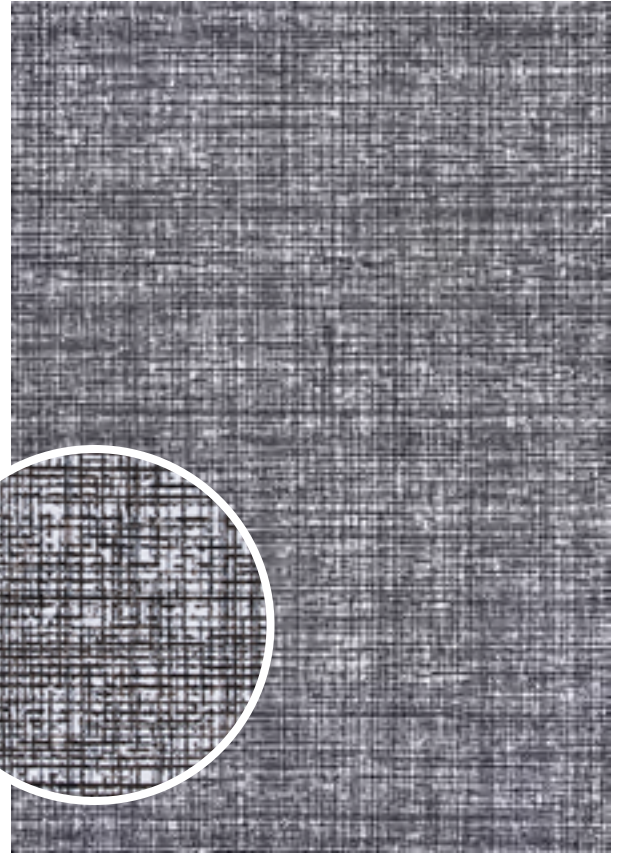
STOCKED SIZES

2' x 3'7" | 3'11" x 5'3" | 5'3" x 7'6" | 6'6" x 9'6" | 7'10" x 11'2" | 9'2" x 12'5"
2'7" x 7'10" Runner

**ALL SIZES ARE APPROXIMATE*



2611/6242
KANJAR/STONE



2611/6282
KANJAR/TERRA FIRMA



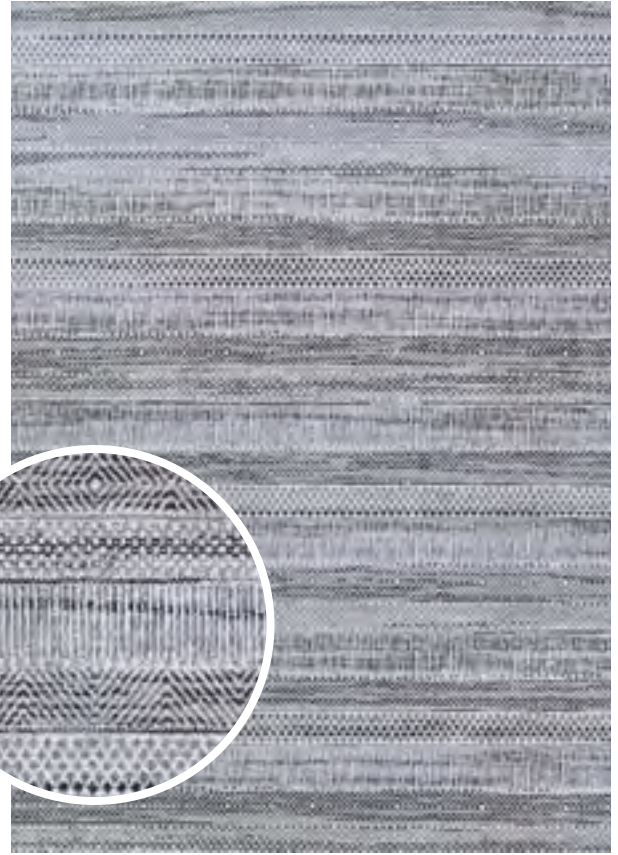
2617/6262
PAMARIA/DRIFT



2617/7242
PAMARIA/TERRA FIRMA



2662/4262
BORIA/EARTH



2662/6242
BORIA/STONE



2672/6272
AHERI/EARTH

RADIANCE *collection*

60% Heat-Set Courtron™ Polypropylene and 40% Polyester



STOCKED SIZES

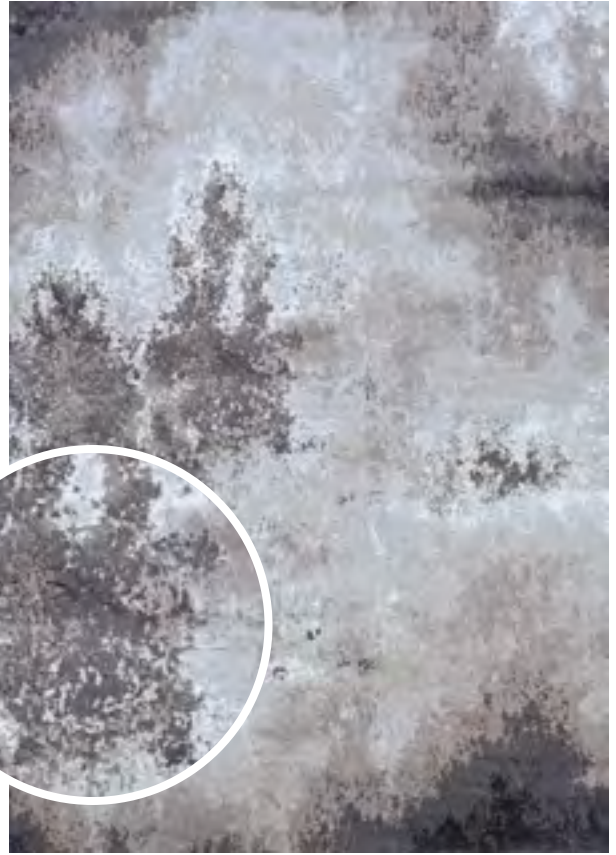
2' x 3'11" | 3'11" x 5'6" | 5'3" x 7'6" | 7'10" x 10'9" | 9'2" x 12'9" | 2'2" x 7'10" Runner

**ALL SIZES ARE APPROXIMATE*

Face-to-Face Wilton Woven
Polyester Accents Enhance the Soft
Contemporary Look of Each Area Rug
Fashionable Range of Fresh, Modern Colors
Soft, Luxurious Finish
In Excess of a Million Points of Yarn
Per Square Meter
Pile Height: .374"
Power-Loomed in Belgium



4104/0500
DONALBAIN/RIPTIDE



4104/0620
DONALBAIN/KOBICHA



4107/0500
TYBALT/RIPTIDE



4107/0620
TYBALT/KOBICHA



4107/0630
TYBALT/SAND



4108/0500
JULIETTE/RIPTIDE



4108/0620
JULIETTE/KOBICHA



4108/0702
JULIETTE/ZEAL

SERENITY *collection*

100% Heat-Set Courtron™ Polypropylene



Face-to-Face Wilton Woven

One Million Points of Yarn
Per Square Meter

Unique Abstract Designs Highlighted
in Modern Colors

Soft, Dense Luxurious Pile
Pile Height: .393"

Power-Loomed in Belgium

STOCKED SIZES

2' x 3'11" | 3'11" x 5'6" | 5'3" x 7'6" | 6'6" x 9'6" | 7'10" x 10'9" | 9'2" x 12'9"
2'2" x 7'10" Runner

**ALL SIZES ARE APPROXIMATE*



5145/0100
CRYPTIC/BEIGE-CHAMPAGNE



5145/0515
CRYPTIC/GREY-OPAL



5145/0912
CRYPTIC/LIGHT GREY-CHAMPAGNE



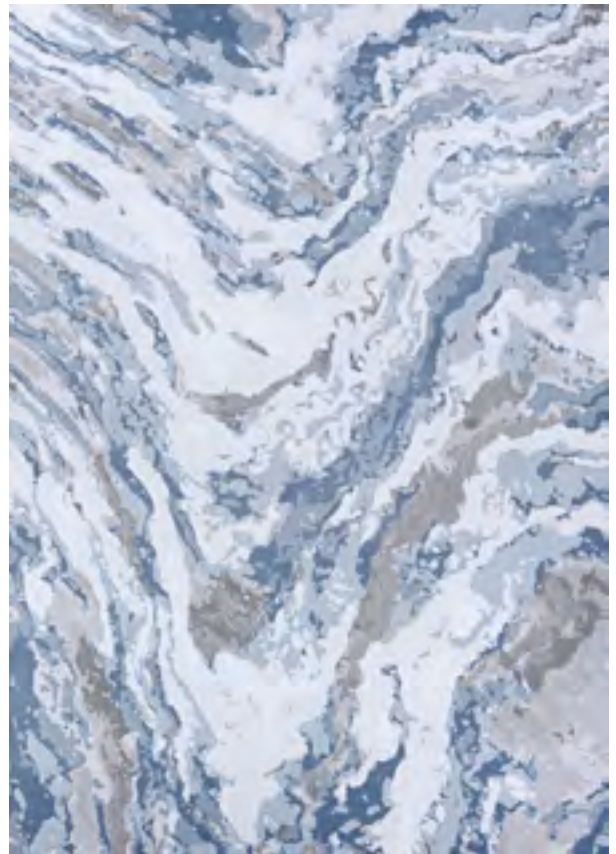
5149/0910
WEATHERED/MUSHROOM-OPAL



5158/0920
FIELD STONE/MUSHROOM-OPAL



5161/0291
ABSTRACT MARBLE/OPAL-MUSHROOM



5161/0505
ABSTRACT MARBLE/GREY-OPAL



5159/0505

VIRGA/OPAL-GREY-MUSHROOM



5159/0910

VIRGA/MUSHROOM-OPAL



5159/0911

VIRGA/LIGHT GREY-OPAL

SEVILLA *collection*

Machine-Loomed of 100% Polyester



Poly-Shrink Accents Give the Designs
a Tiled Effect

Inspired by the Beautiful Tilework
Found throughout Spain

Pile Height: .236"

Power-Loomed in Turkey

STOCKED SIZES

2' x 3'7" | 3'11" x 5'6" | 5'3" x 7'2" | 5'10" x 9'2" | 7'6" x 10'9" | 8'6" x 12'11"
2'3" x 7'10" Runner

*ALL SIZES ARE APPROXIMATE



7417/0417
TOMARES/INDIGO



7461/0004
UMBRETE/CREMA



7462/4188
ESPARTINAS/CREMA



7464/7423
OLIVARES/TULIP



7465/7498
ALGABA/AZUL



7466/7421
TORREPALMA/AZUL

URBAN SHAG *collection*

100% Heat-Set Courtron™ Polypropylene



STOCKED SIZES

2' x 3'11" | 3'11" x 5'3" | 5'3" x 7'6" | 6'6" x 9'6" | 7'10" x 10'10" | 9'2" x 12'3"
2'2" x 7'7" Runner

**ALL SIZES ARE APPROXIMATE*

Face-to-Face Wilton Woven
Ultra-Soft, High Pile Reduces
Tracking and Shading
Featuring Contemporary-Casual
Motifs and Solids
Approximate Pile Height: 1.96"
Power-Loomed in Turkey



U017/0770
FES/WHITE-LIGHT GREY



U157/0070
KAZA/WHITE-MINK



U104/0014
TEMARA/NAVY-WHITE



U104/0045
TEMARA/MINK-WHITE



U223/0023
MEDINA/WHITE



U223/0036
MEDINA/LIGHT GREY



U223/0062
MEDINA/LIGHT BLUE

PULSE PRODUCT
PORTFOLIO



FEBRUARY 2019



TWO EXECUTIVE DRIVE, FORT LEE, NEW JERSEY 07024 • 800.223.6186 • COURISTAN.COM

Wall-To-Wall Carpet • Area Rugs • Roll Runners • Custom Rugs

