



COURISTAN®

July–October
2019

Couri-er

PASHA COLLECTION

Machine-Woven Base of 100% Polyester, Digitally Printed Motifs with a Non-Skid Backing,
Saddle-Stitched Edges Featuring Old-World Designs in a Modern Interpretation
Pile Height: .276", Made in China, *Available in 8 Area Rugs*





AREA RUG COLLECTIONS

NEW DIGITALLY PRINTED

CALEDONIA COLLECTION

Machine-Woven Base of 100% Polyester, Digitally Printed Motifs with a Non-Skid Backing
Saddle-Stitched Edges, Tropical Florals Inspired by Sunsets Over Crystal Clear Lakes
Pile Height: .279" | **Available in 5 Area Rugs** | SIZES: 5' x 8', 8' x 10', 9' x 12', 2' x 8' Runner



5558/5158 - Eden/Magenta-Haze



5559/5159 - Arcadia/Peony



5560/5160 - Kamla/Plumeria



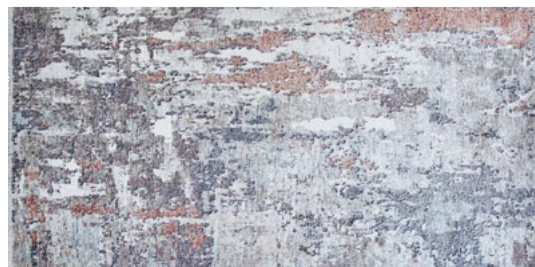
5561/5161 - Tangiers/Aquamarine



5562/5162 - Rhapsody/Honeysuckle

MYTHIC COLLECTION

100% Space-Dyed Polyester, Soothing Abstract and Contemporary Watercolor Designs
Accented in a Full Range of Inspirational Colors, Cross-Woven on Wilton Looms | Pile Height: .295"
Available in 6 Area Rugs | SIZES: 5'3" x 7'6", 5'10" x 8'10", 7'10" x 10'9", 8'6" x 12'11", 2'3" x 7'10" Runner



5296/0962 - Fulgora/Seacliff Grey



5679/0769 - Acolus/Stormy Blue



5687/0687 - Tempestas/Seashell



5690/0290 - Caelus/Twilight

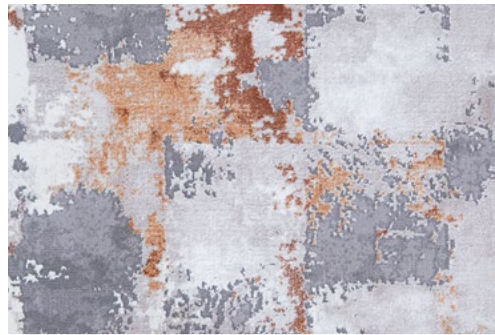


5689/0896 - Aether/Sol

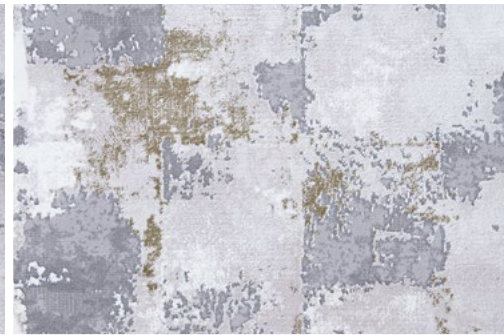


CREATIONS™ BROADLOOM

80% HEAT-SET COURTRON™ POLYPROPYLENE/
20% SHRINK POLYESTER



AMALFI - *Sunset Sky*



AMALFI - *Morning Dew*

BRAND: Creations™, **PILE:** 80% Heat-Set Courtron™ Polypropylene/20% Shrink Polyester,
WEAVE: Face-to-Face Woven Wilton High/Low Cut-Pile, **WIDTH:** 13'2" (4 Meters)
Available in: Sunset Sky, Morning Dew and Night Blue (shown)



ATLANTIS - *Sunset Sky*

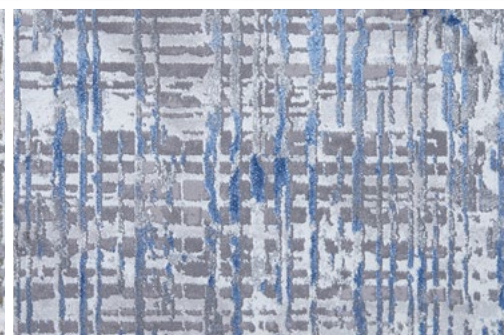


ATLANTIS - *Night Blue*

BRAND: Creations™, **PILE:** 80% Heat-Set Courtron™ Polypropylene/20% Shrink Polyester,
WEAVE: Face-to-Face Woven Wilton High/Low Cut-Pile, **WIDTH:** 13'2" (4 Meters)
Available in: Sunset Sky, Night Blue and Morning Dew (shown)



AUBREY - *Morning Dew*



AUBREY - *Night Blue*

BRAND: Creations™, **PILE:** 80% Heat-Set Courtron™ Polypropylene/20% Shrink Polyester,
WEAVE: Face-to-Face Woven Wilton High/Low Cut-Pile, **WIDTH:** 13'2" (4 Meters)
Available in: Morning Dew, Night Blue and Sunset Sky (shown)

NEW AREA RUG INTRODUCTIONS



CHARM COLLECTION

100% SPACE-DYED HEAT-SET COURTRON™ POLYPROPYLENE
FEATURING SOPHISTICATED MOTIFS SUITABLE FOR OUTDOOR/INDOOR USE
UV STABILIZED; MOLD/MILDEW/WATER RESISTANT
PILE HEIGHT: NO PILE (FLAT WEAVE) | POWER-LOOMED IN TURKEY

Available in 6 Area Rugs

SIZES | 2'2" x 4'3", 3'3" x 5'6", 5'3" x 7'6", 6'6" x 9'6",
7'10" x 10'9", 2'2" x 7'6" Runner



PRAIRIE HIDES COLLECTION

100% POLYESTER MACHINE-WOVEN BASE WITH A COTTON
MICRO-SUEDE BACKING EMULATING SHAPED COW HIDES
A UNIQUE COLLECTION OF DIGITALLY PRINTED AREA RUGS





BLISS COLLECTION

100% ULTRA-SOFT POLYESTER
FACE-TO-FACE WILTON WOVEN
TRADITIONAL DESIGNS WITH A MODERN
EDGE IN FRESH COLORS
EACH DESIGN FEATURES A PATINA FINISH
PILE HEIGHT: .315"

POWER-LOOMED IN TURKEY

Available in 5 Area Rugs

SIZES | 2' x 3', 3'11" x 5'11", 5'3" x 7',
7'10" x 10'3", 9' x 13',
2'6" x 7'10" Runner



DOLCE COLLECTION

100% FIBER-ENHANCED COURTRON™ POLYPROPYLENE WITH DURABLE POLYESTER
A STRUCTURED TAPESTRY CONSTRUCTION, SUITABLE FOR OUTDOOR/INDOOR USE
UV STABILIZED; WATER, MOLD/MILDEW RESISTANT
PILE HEIGHT: NO PILE HEIGHT (FLAT WEAVE) | POWER-LOOMED IN BELGIUM

Available in 13 Area Rugs

SIZES | 2'3" x 3'11", 4' x 5'10", 5'3" x 7'6", 8'1" x 11'2", 2'3" x 7'10" Runner



SULTAN TREASURES COLLECTION

100% HEAT-SET COURTRON™ POLYPROPYLENE, FACE-TO-FACE WILTON WOVEN
1 MILLION POINTS OF YARN PER SQUARE METER, SOFT, LUXURIOUS FINISH
TRADITIONAL PERSIAN DESIGNS HIGHLIGHTED IN A RANGE OF MODERN COLORS
PILE HEIGHT: .43" | POWER-LOOMED IN BELGIUM | *Available in 12 Area Rugs*

SIZES | 2' x 3'7", 3'11" x 5'3", 5'3" x 7'6", 6'6" x 9'6",
7'10" x 11'2", 9'2" x 12'5", 2'7" x 7'10" Runner



PILE HEIGHT: .079"
MADE IN CHINA

Available in 3 Area Rugs

SIZES | 3'10" x 5'1", 5'1" x 6'6", 6'4" x 8'

NEW BROADLOOM INTRODUCTIONS

YAKIMA



BRAND:
Premiere

Available in:
Coffee, Beige
and Blue (shown)

PILE | 100% Pure Wool
CONSTRUCTION | Hand-Tufted Loop Pile
WIDTH | 15'

NOTE RESIDENTIAL BROADLOOM

*These products can be fabricated
into a Custom Size Area Rug.*

Finishing options include the following bindings: Chenille, Cotton Basketweave, Cotton Fabric, Linen, Genuine Leather and Courtron™ Polypropylene (For Outdoor/Indoor Usage). Programmed Borders, Wool and Synthetic Serging and 2" Length Wool Fringe are also available.

Applied Backing Options Include:
Outdoor Living, Non Skid and Felt (*Standard*)

Contact your Couristan Territory Manager today in regard to our Custom Area Rug Online Calculator, Board and Program.

ARIANA STRIA



BRAND | Premiere
PILE | 100% Pure Virgin Wool
WEAVE | Woven Wilton Loop Pile
WIDTH | 13'2" (4 Meters)

Available in: Light Grey, Sunburst,
Soft Blue, Black and
Denim (shown)



BOTETI

BRAND	Creations™
PILE	80% Heat-Set Courtron™ Polypropylene/ 20% Shrink Polyester
WEAVE	Face-to-Face Woven Wilton
WIDTH	13'2" (4 Meters)

Available in: Goldenwood, Shadow, Aegean, Chinchilla and Arctic (shown)



CREEKSIDE

BRAND	Premiere
PILE	70% Wool/30% Polyester
WEAVE	Hand-Loomed Loop Pile
WIDTH	15'

Available in: Steel, Earth, Mink, Natural, Denim and Granite (shown)



FIRE DIAMONDS

Available in: Blue, Turquoise, Lemon-Lime, Oyster and Dune

BRAND	Premiere
PILE	100% Pure Wool
CONSTRUCTION	Hand-Tufted Loop Pile
WIDTH	15'



ROYALAX II® TARTAN

**Brand: Premiere, Pile: 80% Wool, 20% Nylon, Weave: 9-Row Axminster Cut-Pile,
Width: 13'2" (4 Meters), Available in 5 Colors**



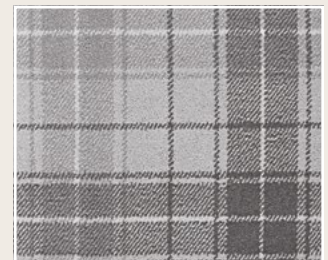
8501/0001 – Scottish Red



8501/0002 – Scottish Green



8501/0003 – Driftwood



8501/0005 – Winter Fog

VISIT US

UPCOMING MARKETS

Las Vegas Market

July 28 – August 1, 2019

World Market Center

Building B, Showroom B360, 3RD Floor

New York Home Fashions Market Week

September 16 – 19, 2019

230, 5TH Avenue, New York, NY

Suite 1010, 10TH Floor

High Point Market

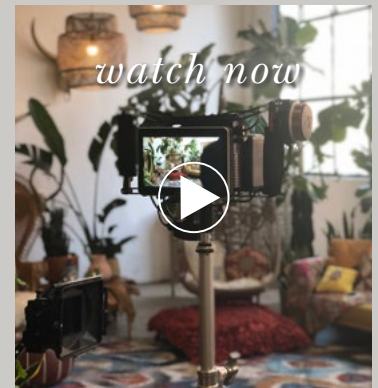
October 19 – 23, 2019

Showplace Building

Showroom 2350, 2ND Floor

#beautiful

TREND REPORT



“2019 is all about inclusion. Couristan identifies five key trends in the Home Furnishings Industry by embracing some of last year's influences and giving them new life in this year's trends.”

VISIT OUR YOUTUBE + VIMEO CHANNELS



WALL-TO-WALL CARPET | AREA RUGS
ROLL RUNNERS | CUSTOM RUGS

Two Executive Drive, Fort Lee, New Jersey 07024 | 800.223.6186 | couristan.com