



COURISTAN®

January–March
2020

Couri-er

PLANTATION KEY

BRAND: Creations™, **PILE:** 100% Heat-Set Courtron™ Polypropylene, UV Stabilized

WEAVE: Woven Wilton Loop Pile, **WIDTH:** 15'

Available in: Aqua, Blue, Navy, Orange and Grey (shown)





AREA RUG COLLECTIONS

NEW INTRODUCTIONS

NIRVANA COLLECTION

Unique Blend of 70% Heat-Set Courtron™ Polypropylene and 30% Shrink Polyester, Face-To-Face Wilton Woven
Pile Height: .275" | Power-Loomed in Turkey | **Available in 6 Area Rugs**

SIZES: 3'3" x 5'3", 5'3" x 7'6", 6'6" x 9', 7'10" x 10'3", 9'10" x 13'2" and a 2'7" x 7'10" Runner



8443/4585 - Wellington/Greystone



8046/4383 - Topiary/Antique Lace



8046/4585 - Topiary/Greystone



8580/4585 - Thames/Greystone



8580/4383 - Thames/Antique Lace

COUTURE COLLECTION

100% Space-Dyed Polyester, Cross-Woven on Wilton Looms for a Full Range of Colors and a Unique Abrash Effect, Traditional Chobi-Inspired Designs Elegantly Colored
Power-Loomed in Turkey | Pile Height: .275" | **Available in 3 Area Rugs** | SIZES: 2' x 3'7", 3'9" x 5'5", 5'3" x 7'6", 7'10" x 10'9", 9'10" x 13'9" and a 2'2" x 8'11" Runner



6755/6775 - Aquarelle/Pewter-Mode Beige



6795/6759 - Bordado/Light Grey-Multi



6930/6695 - Renaissance/Pewter-Mode Beige



OUTDOOR/INDOOR BROADLOOM

CREATIONS™ BRAND INTRODUCTIONS



TAHITI - *Festival Galore*



TAHITI - *Tropical Rainforest*



TAHITI - *Golden Canary*



TAHITI - *Pink Flamingo*

BRAND: Creations™, **PILE:** 100% Space-Dyed Polyester, UV Stabilized
WEAVE: Structured Flatwoven, **WIDTH:** 13'2" (4 Meters)

Available in: Festival Galore, Tropical Rainforest, Golden Canary,
Pink Flamingo and Chameleon (shown)



BELIZE - *Festival Galore*



BELIZE - *Tropical Rainforest*



BELIZE - *Golden Canary*



BELIZE - *Pink Flamingo*

BRAND: Creations™, **PILE:** 100% Space-Dyed Polyester, UV Stabilized
WEAVE: Structured Flatwoven, **WIDTH:** 13'2" (4 Meters)

Available in: Festival Galore, Tropical Rainforest, Golden Canary,
Pink Flamingo and Chameleon (shown)



NEW AREA RUG INTRODUCTIONS



MARSEILLE COLLECTION

100% FIBER-ENHANCED COURTRON™ POLYPROPYLENE
STRUCTURED FLATWOVEN CONSTRUCTION SUITABLE FOR OUTDOOR/INDOOR USE
UV STABILIZED; MOLD/MILDEW/WATER RESISTANT
PILE HEIGHT: NO PILE (FLAT WEAVE) | POWER-LOOMED IN BELGIUM

Available in 7 Area Rugs

SIZES | 2' x 3'7", 3'9" x 5'5", 5'3" x 7'6", 5'10" x 9'2", 7'6" x 10'9",
8'6" x 13', 2'3" x 7'10" Runner, 2'3" x 11'9" Runner



BLISS COLLECTION

100% ULTRA-SOFT POLYESTER, FACE-TO-FACE WILTON WOVEN
TRADITIONAL DESIGNS AND INSPIRATIONS GIVE EACH AREA
RUG A MODERN EDGE IN FRESH COLORS



MARBLEHEAD COLLECTION

SOFT TOUCH OF FRIESE AND SHRINK POLYESTER

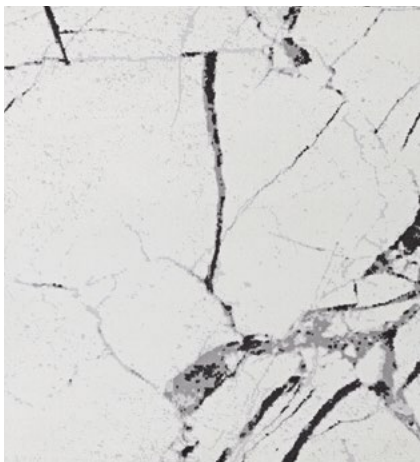
EMULATING BEAUTIFUL, YET BOLD MARBLE FLOOR DESIGNS

PILE HEIGHT: .354"

POWER-LOOMED IN TURKEY

Available in 5 Area Rugs

SIZES | 3'11" x 5'11", 5'3" x 7'6",
with fringe | 7'10" x 10'3", 9' x 13',
2'6" x 7'10" Runner



PRAIRIE COLLECTION

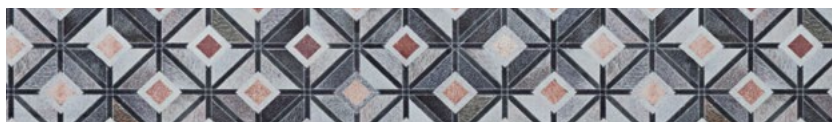
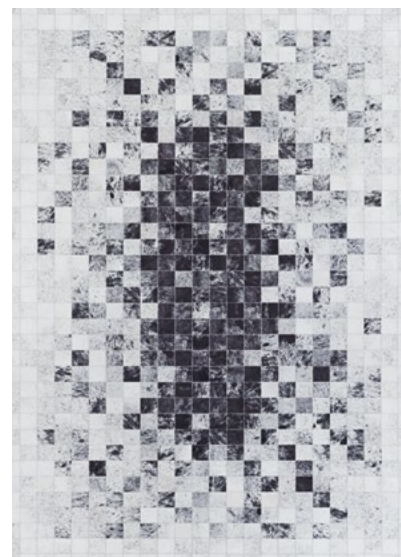
100% POLYESTER MACHINE-WOVEN BASE WITH A NON-SKID BACKING
EMULATING COWHIDES IN VARIOUS PATTERNS

A UNIQUE COLLECTION OF DIGITALLY PRINTED RUGS

PILE HEIGHT: .079" | MADE IN CHINA

Available in 8 Area Rugs

SIZES | 2' x 3'7", 3'9" x 5'5", 5'3" x 7'6", 7'6" x 10', 2'3" x 7'10" Runner



GYPSY COLLECTION

100% HEAT-SET COURTRON™ POLYPROPYLENE, SOFT, LOW PILE
CROSS-WOVEN ON WILTON LOOMS

EACH TRADITIONAL AND CONTEMPORARY DESIGN IS HARMONIZED IN A
CAREFULLY SEQUENCED PALETTE OF UP TO 48 MODERN HUES

PILE HEIGHT: .354" | POWER-LOOMED IN TURKEY | *Available in 14 Area Rugs*

SIZES | 3'6" x 5'6", 5'3" x 7'6", 8' x 10'9", 2'3" x 7'6" Runner



PILE HEIGHT: .315"
POWER-LOOMED IN TURKEY

Available in 8 Area Rugs

SIZES | 2' x 3', 3'11" x 5'11", 5'3" x 7', 7'10" x 10'3", 9'
with fringe | x 13', 2'6" x 7'10" Runner



NEW BROADLOOM INTRODUCTIONS

MARATHON KEY



BRAND:
Creations™

Available in:
Aqua, Blue, Grey,
Orange and
Navy (shown)



PILE | 100% Heat-Set Courtron™
Polypropylene, UV Stabilized
WEAVE | Hand-Loomed Loop Pile
WIDTH | 16'4"

SAMANTHA



BRAND | Premiere
PILE | 100% Pure Wool
WEAVE | Woven Wilton Loop Pile
WIDTH | 13'

Available in: Bisque, Mist, Mushroom,
Sky and Onyx (shown)

NOTE

RESIDENTIAL BROADLOOM

*These products can be fabricated
into a Custom Size Rug.*

Finishing options include the following bindings:
Chenille, Cotton Basketweave, Cotton Fabric, Linen,
Genuine Leather, and Courtron™ Polypropylene,
3/8" Synthetic Binding (For Outdoor/Indoor Usage).
Programmed Borders, Wool and Synthetic Serging
and 2" Length Wool Fringe are also available.

Applied Backing Options Include:
Outdoor Living, Non Skid and Felt (*Standard*)

Contact your Couristan Territory Manager today in
regard to our Custom Rug Online Calculator, Boards
and Program.



SARAH

BRAND | Premiere
PILE | 100% Pure Wool
WEAVE | Woven Wilton Loop Pile
WIDTH | 13'

Available in: Bisque, Mist, Mushroom, Onyx and Sky (shown)



CAROUSEL

BRAND | Premiere
PILE | 100% Pure Wool
CONSTRUCTION | Hand-Tufted Loop Pile
WIDTH | 15'

Available in: Apple, Fog, Mist, Seafoam and Navy (shown)



RIDGE VIEW

Available in: Charcoal, Ice, Platinum, Sage and Denim

BRAND | Premiere
PILE | 100% Pure Wool
CONSTRUCTION | Hand-Tufted Loop Pile
WIDTH | 15'



ANAKENA

Brand: Premiere, Pile: 100% Pure Wool, Construction: Hand-Tufted Loop Pile
Width: 15', Available in 5 Colors



6750/0004 – Denim



6750/0001 – Fern



6750/0002 – Natural



6750/0003 – Tusk



6750/0005 – Turquoise

VISIT US

UPCOMING MARKETS

Las Vegas Market

January 26 – 30, 2020

World Market Center, Las Vegas

Building B, **Showroom B360, 3RD Floor**

The International Surface Event

January 28 – 30, 2020

Mandalay Bay Convention Center, Las Vegas

Booth 6033

New York Home Fashions Market Week

March 23 – 26, 2020 | 230, 5TH Ave., New York, NY

Suite 1010, 10TH Floor

High Point Market

April 25 – 29, 2020

Showplace Building, **Showroom 2350, 2ND Floor**

UNIVERSAL DESIGN GALLERY II

DISPLAY: 60 – 24" x 36" Product Boards

