

# CUSTOM RUG PROGRAM





**YOUR PERSONALITY  
YOUR LIFE —**  
*Personalize your décor!*



---

## *CREATE THE PERFECT RUG*

---

At Couristan, we consider choosing the right look for any home décor to be a personal decision. We understand that you not only want a rug that adds warmth to your floor, but you also want a rug that addresses your needs and reflects your own personal style. With our Custom Rug Program, creating a unique rug to personalize your space is as easy as four simple steps.

### CREATE THE PERFECT RUG IN 4 SIMPLE STEPS

**1**

FIELD  
DESIGN

**2**

SIZE &  
SHAPE

**3**

FINISHING  
OPTION

**4**

BACKING  
OPTION



**1.**

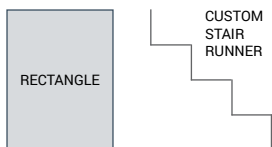
### *CHOOSE THE CARPET YOU WOULD LIKE TO FABRICATE INTO A CUSTOM RUG.*

*Choose a field design from our vast assortment of residential carpets. Make your decision based on pattern, style, color, construction or fiber.*

**2.**

### *CHOOSE THE SIZE OR SHAPE OF YOUR RUG.*

*Carefully measure the space in your home in which you are planning to place the rug. Make sure the size you choose fits the designated space appropriately. Consider the room's activity, as well as the impact you would like it to make.*





### 3. *CHOOSE YOUR FINISHING OPTION.*

*Choose from an assortment of available finishings, each constructed with the finest materials to ensure quality, durability and lasting beauty.*

**AVAILABLE FINISHING OPTIONS**

- Chenille Bindings
- Cotton Fabric Bindings
- Linen Bindings
- 3/8" Synthetic Binding
- Wool Serging

*For Outdoor/Indoor Usage:*

- Courtron™ Polypropylene Bindings
- Synthetic Serging



**HAND SERGED WOOL**

#### **HAND SERGE WOOL**

*The process where the serging of the rug is completed by hand. This type of serging shows less of the wool finishing yarn on the face of the rug.*



**MITERED CORNER**  
(Hidden Stitch)

#### **MITERED CORNER**

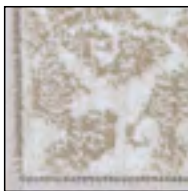
*Provides an elegantly framed appearance using a binding tape. Binding stitching means the thread is hidden and not visible on the binding or face of the rug. Top stitching means that the thread is visible on top of the binding and face of rug.*



**MACHINE SERGED WOOL**

#### **MACHINE SERGED WOOL**

*In this process the serged edge forms a continuous wrap of the wool yarn around the edges of the rug.*



**MACHINE SERGED  
POLYPROPYLENE**

#### **MACHINE SERGED POLY**

*In this process the serged edge forms a continuous wrap of the polypropylene yarn around the edges of the rug. Polypropylene finishing is suitable for both indoor and outdoor use.*



## *BINDING OPTIONS*

In the Couristan tradition, each custom created rug is constructed with the finest materials to ensure quality, durability and lasting beauty.

### ONE-YEAR LIMITED WARRANTY

*Our superior craftsmanship is guaranteed with a one-year limited warranty from the date of shipment.*

### IN STOCK CARPET

*Our quality residential carpets are kept in stock so that delivery of your custom crafted rug can be expected within four weeks of placing your order.*

*\*Expedited Services Are Available Upon Request.*

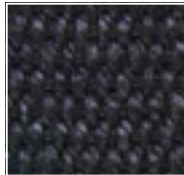
### VALUE-PRICED

*Value-priced options available, providing a world of possibilities for your custom needs.*

### *Linen Bindings*



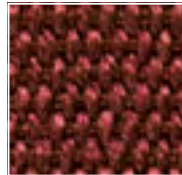
**LINE/0001**  
Midnight



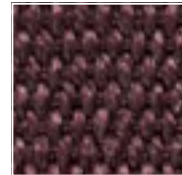
**LINE/0002**  
Prussian Blue



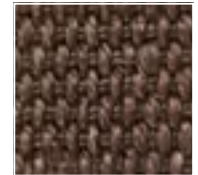
**LINE/0003**  
Umber



**LINE/0004**  
Merlot



**LINE/0005**  
Raspberry



**LINE/0006**  
Hot Cocoa



**LINE/0007**  
Husk



**LINE/0008**  
Marigold



**LINE/0009**  
Straw

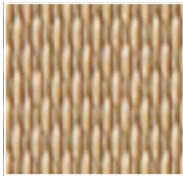


**LINE/0010**  
Taupe

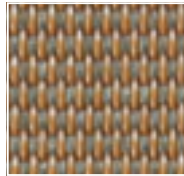
#### FINISHING SPECS

Width: 4¾"  
Approx. Width on Face of Rug: 2¼"  
Mitered or Overlapped: YES

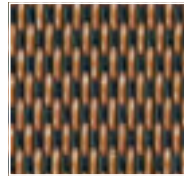
*Courtron™ Polypropylene Bindings*  
(FOR OUTDOOR/INDOOR USAGE)



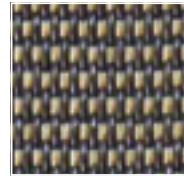
**CBPP/0218**  
**Oak**



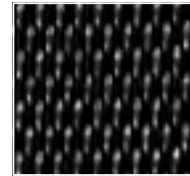
**CBPP/1312**  
**Warm Beige**



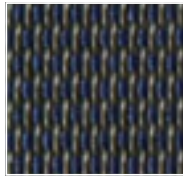
**CBPP/2422**  
**Natural/Ebony**



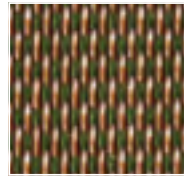
**CBPP/3519**  
**Grey/Natural**



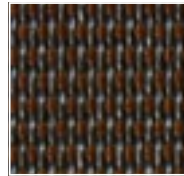
**CBPP/4625**  
**Ebony**



**CBPP/5730**  
**Denim**



**CBPP/6815**  
**Moss**



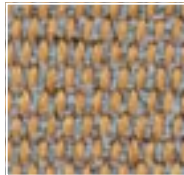
**CBPP/8013**  
**Brown**

**FINISHING SPECS**  
Width: 4¾"  
Approx. Width on Face of Rug: 2¼"  
Mitered or Overlapped: YES

*Chenille Bindings*



**CHEN/0001**  
**Steel**



**CHEN/0002**  
**Camel**



**CHEN/0003**  
**Taupe**



**CHEN/0004**  
**Espresso**



**CHEN/0005**  
**Champagne**



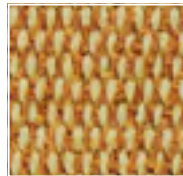
**CHEN/0006**  
**Tusk**



**CHEN/0007**  
**Brick**



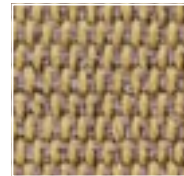
**CHEN/0008**  
**Khaki**



**CHEN/0009**  
**Mustard**



**CHEN/0010**  
**Navy Blue**



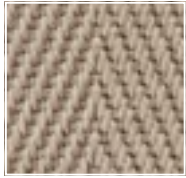
**CHEN/0011**  
**Wicker**



**CHEN/0012**  
**Sage**

**FINISHING SPECS**  
Width: 4¾"  
Approx. Width on Face of Rug: 2¼"  
Mitered or Overlapped: YES

## Cotton Fabric Bindings



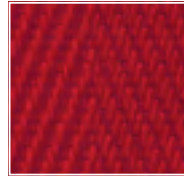
**COTT/8306**  
Tan



**COTT/8307**  
Taupe



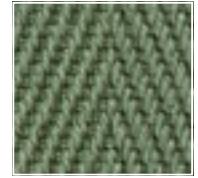
**COTT/8316**  
Brown Beige



**COTT/8317**  
Red



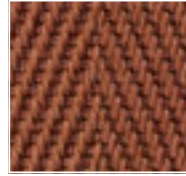
**COTT/8326**  
Medium Brown



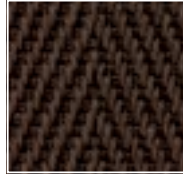
**COTT/8329**  
Green



**COTT/8332**  
Navy Blue



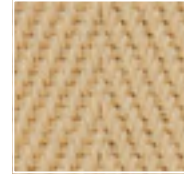
**COTT/8338**  
Ochre



**COTT/8401**  
Chocolate



**COTT/8423**  
Light Beige



**COTT/8434**  
Natural



**COTT/8445**  
Warm Beige



**COTT/8478**  
Black



**COTT/8489**  
White

### FINISHING SPECS

Width: 4¾"  
Approx. Width on Face of Rug: 2¼"  
Mitered or Overlapped: YES

## FINISHING SPECIFICATIONS

OPTIONS	WIDTH	APPROX. WIDTH ON FACE OF RUG	MITERED OR OVERLAPPED
1. Chenille Bindings	4¾"	2¼"	YES
2. Cotton Fabric Bindings	4¾"	2¼"	YES
3. Courtron™ Polypropylene Bindings <i>(Outdoor/Indoor Usage)</i>	4¾"	2¼"	YES
4. Linen Bindings	4¾"	2¼"	YES
5. Synthetic Binding	¾"	¾"	YES
6. Wool or Synthetic Serging <i>(Synthetic Serging will be used for Outdoor/Indoor Usage)</i>	¾"	¾"	N/A



# 4.

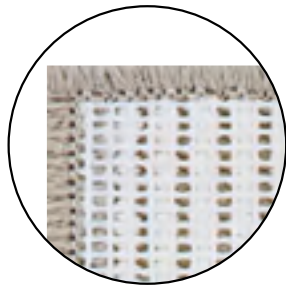
## ***CHOOSE YOUR APPLIED BACKING OPTION.***

*Ensure the protection of ceramic and hardwood floors against scratches and increase the life of your rug.*

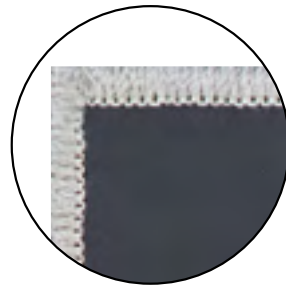
*Provide an extra sense of comfort and a soft underfoot.*

*Eliminate the potential for curling edges and corners.*

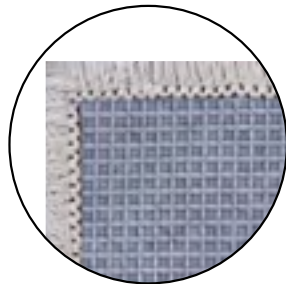
*Outdoor backing provides weather-resistant durability while keeping the rug in its place.*



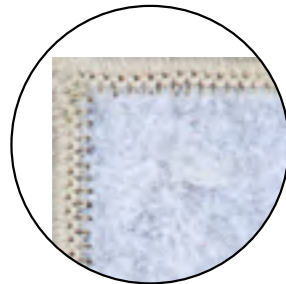
***NO BACKING***  
(Must Be Specified)



***OUTDOOR LIVING CUSHION***  
(For Outdoor/Indoor Usage)



***NON-SKID BACKING***  
(For Indoor Use Only)



***FELT BACKING***  
(Standard for Indoor Use Only)





# CREATE THE PERFECT RUG WITH OUR CUSTOM RUG VISUALIZER

[HTTPS://WWW.COURISTAN.COM/CUSTOM-RUG-TOOL/](https://www.couristan.com/custom-rug-tool/)

The screenshot displays the 'CUSTOM RUG TOOL' interface on the Couristan website. At the top, the Couristan logo is visible, followed by a navigation menu and a search bar. The main heading is 'CUSTOM RUG TOOL' with a sub-heading: 'In just 4 simple steps you can design the perfect rug for your room. Let's get started.' The interface is divided into four numbered steps:

- 1. CHOOSE YOUR DESIGN:** A large image of a brown and tan geometric patterned rug is shown. To its right is a 'CUSTOM RUG SPEC' box containing fields for 'Rug Size (ft x ft)', 'Rug Shape', 'Rug Color', 'Rug Style', 'Rug Length', 'Rug Width', 'Rug Weight', 'Rug Material', 'Rug Backing', and 'Rug Binding'. Below this is a 'Visualized Rug' section with a 'VIEW' button.
- 2. CHOOSE SIZE & SHAPE:** A diagram shows a rug with dimensions and a 'VIEW' button.
- 3. CHOOSE FINISHING:** A section for selecting 'Binding' and 'Color' with a 'VIEW' button.
- 4. CHOOSE BACKING:** A section titled 'Please make your selection below' with four circular options for different backing materials and a 'VIEW' button.

At the bottom of the page, there is a footer with the Couristan logo, 'ABOUT US', 'CONTACT US', and 'SEARCH' sections. A 'NEWSLETTER SIGNUP' form is also present. The page is styled with a clean, modern aesthetic using a color palette of blues, greys, and browns.







TWO EXECUTIVE DRIVE, FORT LEE, NEW JERSEY 07024 • 800.223.6186 • [COURISTAN.COM](http://COURISTAN.COM)

WALL-TO-WALL CARPET • AREA RUGS • ROLL RUNNERS • CUSTOM RUGS

