



COURISTAN®

October–December  
2020

# Couri-er

## LUXOR COLLECTION

A Unique Blend of Polyester, Viscose and Space-Dyed Yarns,  
Cross-Woven on Wilton Looms, One Million Points of Yarn Per Square Meter  
Pile Height: .314", Power-Loomed in Turkey, *Available in 4 Area Rugs*







# AREA RUG COLLECTIONS

## NEW INTRODUCTIONS

### EVEREST COLLECTION

100% Heat-Set Courtron™ Polypropylene, Face-To-Face Wilton Woven, One Million Points of Yarn Per Square Meter, Soft, Luxurious Finish  
Pile Height: .35" | Power-Loomed in Belgium and Bulgaria | **Available in 10 Area Rugs**  
SIZES: 2' x 3'7", 3'11" x 5'3", 5'3" x 7'6", 7'10" x 11'2", 9'2" x 12'5" and a 2'7" x 7'10" Runner



6374/6636 - Bohemia/Denim-Ivory



6374/6757 - Bohemia/Greystone-Lime

### PRAIRIE HIDES COLLECTION

100% Polyester Machine-Woven Base with a Cotton Micro-Suede Backing, Emulating Shaped Cowhides, A Unique Collection of Digitally Printed Area Rugs  
Made in China | Pile Height: .079" | **Available in 7 Area Rugs** | SIZES: 3'10" x 5'1", 5'1" x 6'6", 6'4" x 8'



1814/5074 - Larvik/Ivory-Black



1813/2993 - Geilo/Ivory-Buck



1817/5074 - Alesund/Ivory-Black





Passes Class-1 Test  
ASTM E648-08

# OUTDOOR/INDOOR BROADLOOM

COMMERCIAL / RESIDENTIAL INTRODUCTIONS



**EXECUTIVE SUITES** - *Ash*



**EXECUTIVE SUITES** - *Flint*



**EXECUTIVE SUITES** - *Tobacco*



**EXECUTIVE SUITES** - *Pearl*

**BRAND:** Creations™, **PILE:** 100% Courtron™ Polypropylene, UV Stabilized

**WEAVE:** Structured Flatwoven, **WIDTH:** 13'2" (4 Meters)

**RADIANT PANEL TEST:** Passes Class-1 Test ASTM E648-08

*Available in:* Ash, Flint, Oyster (shown), Tobacco and Pearl



**VILLA SUITES** - *Ash*



**VILLA SUITES** - *Oyster*



**VILLA SUITES** - *Tobacco*



**VILLA SUITES** - *Pearl*

**BRAND:** Creations™, **PILE:** 100% Courtron™ Polypropylene, UV Stabilized

**WEAVE:** Structured Flatwoven, **WIDTH:** 13'2" (4 Meters)

**RADIANT PANEL TEST:** Passes Class-1 Test ASTM E648-08

*Available in:* Ash, Flint (shown), Oyster, Tobacco and Pearl





# NEW AREA RUG INTRODUCTIONS



## BROCATELLE COLLECTION

A UNIQUE BLEND OF 70% HEAT-SET COURTRON™ POLYPROPYLENE / 30% SHRINK POLYESTER

FACE-TO-FACE WILTON WOVEN

FEATURING TRADITIONAL DESIGNS WITH A MODERN TWIST

SOFT COLOR PALETTE OF MODERN MOOD HUES PROVIDES AN EYE-CATCHING APPEAL

PILE HEIGHT: .354" | POWER-LOOMED IN TURKEY

*Available in 5 Area Rugs*

**SIZES** | 5'3" x 7'6", 7'10" x 10'9", 2'7" x 7'10" Runner



## DOLCE COLLECTION

100% FIBER-ENHANCED COURTRON™ POLYPROPYLENE WITH DURABLE POLYESTER, A STRUCTURED TAPESTRY CONSTRUCTION  
SUITABLE FOR OUTDOOR/INDOOR USE  
UV STABILIZED, MOLD/MILDEW/WATER RESISTANT





## COUTURE COLLECTION

100% SPACE-DYED POLYESTER  
CROSS-WOVEN ON WILTON LOOMS  
FOR A FULL RANGE OF COLORS  
AND A UNIQUE ABRASH EFFECT  
TRADITIONAL CHOBI-INSPIRED DESIGNS  
ELEGANTLY COLORED IN A SOFT  
YET VIBRANT PALETTE

PILE HEIGHT: .275"

POWER-LOOMED IN TURKEY

*Available in 4 Area Rugs*

**SIZES** | 2' x 3'7", 3'9" x 5'5", 5'3" x 7'6",  
7'10" x 10'9", 9'10" x 13'9",  
2'6" x 7'10" Runner

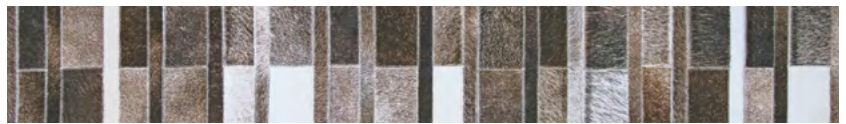


## PRAIRIE COLLECTION

100% POLYESTER MACHINE-WOVEN BASE WITH A NON-SKID BACKING  
EMULATING COWHIDES IN VARIOUS PATTERNS  
A UNIQUE COLLECTION OF DIGITALLY PRINTED AREA RUGS  
PILE HEIGHT: .079" | MADE IN CHINA

*Available in 8 Area Rugs*

**SIZES** | 2' x 3'7", 3'9" x 5'5", 5'3" x 7'6", 7'6" x 10', 2'3" x 7'10" Runner



## CHARM COLLECTION

100% SPACE-DYED HEAT-SET COURTRON™ POLYPROPYLENE, SOPHISTICATED MOTIFS  
SUITABLE FOR OUTDOOR/INDOOR USE  
UV STABILIZED, MOLD/MILDEW/WATER RESISTANT  
PILE HEIGHT: NO PILE (FLAT WEAVE) | POWER-LOOMED IN TURKEY

*Available in 8 Area Rugs*

**SIZES** | 2'2" x 4'3", 3'3" x 5'6", 5'3" x 7'6", 6'6" x 9'6", 7'10" x 10'9", 2'2" x 7'6" Runner



PILE HEIGHT: NO PILE (FLAT WEAVE)  
POWER-LOOMED IN BELGIUM

*Available in 19 Area Rugs*

**SIZES** | 2'3" x 3'11", 4' x 5'10", 5'3" x 7'6", 8'1" x 11'2",  
2'3" x 7'10" Runner





# NEW BROADLOOM INTRODUCTIONS

## BARBADOS



**BRAND:**  
Creations™

*Available in:*  
Morning Fog,  
Aegean Coast (shown)  
and Sea Shell



**PILE** | 100% Courtron™  
Polypropylene, UV Stabilized  
**WEAVE** | Structured Flatwoven  
**WIDTH** | 12'7"

## NOTE

## RESIDENTIAL BROADLOOM

*These products can be fabricated  
into a Custom Size Rug.*

Finishing options include the following bindings: Chenille, Cotton Fabric, Linen and Courtron™ Polypropylene, 3/8" Synthetic Binding (For Outdoor/Indoor Usage). Programmed Borders, Wool and Synthetic Serging and 2" Length Wool Fringe are also available.

Applied Backing Options Include:  
Outdoor Living, Non-Skid and Felt (*Standard*)

Contact your Couristan Territory Manager today in regard to our Custom Rug Online Calculator, Boards and Program.

## ROYALAX II® NEW KESHAN



**BRAND** | Premiere  
**PILE** | 80% Wool, 20% Nylon  
**WEAVE** | 9-Row Axminster Cut-Pile  
**WIDTH** | 13'2" (4 Meters)

*Available in:* Ebony Sky (shown),  
Robin's Egg, Royal Blue,  
Green Leaf and London Fog

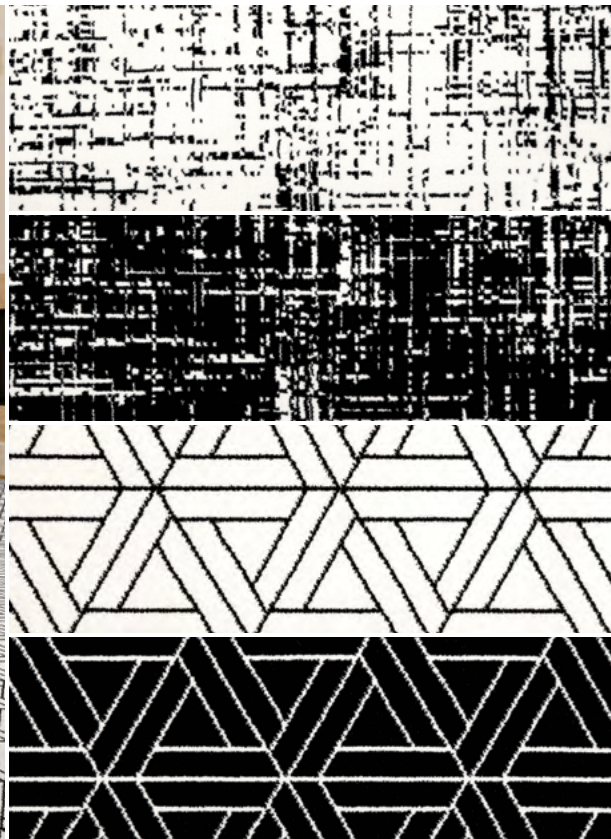
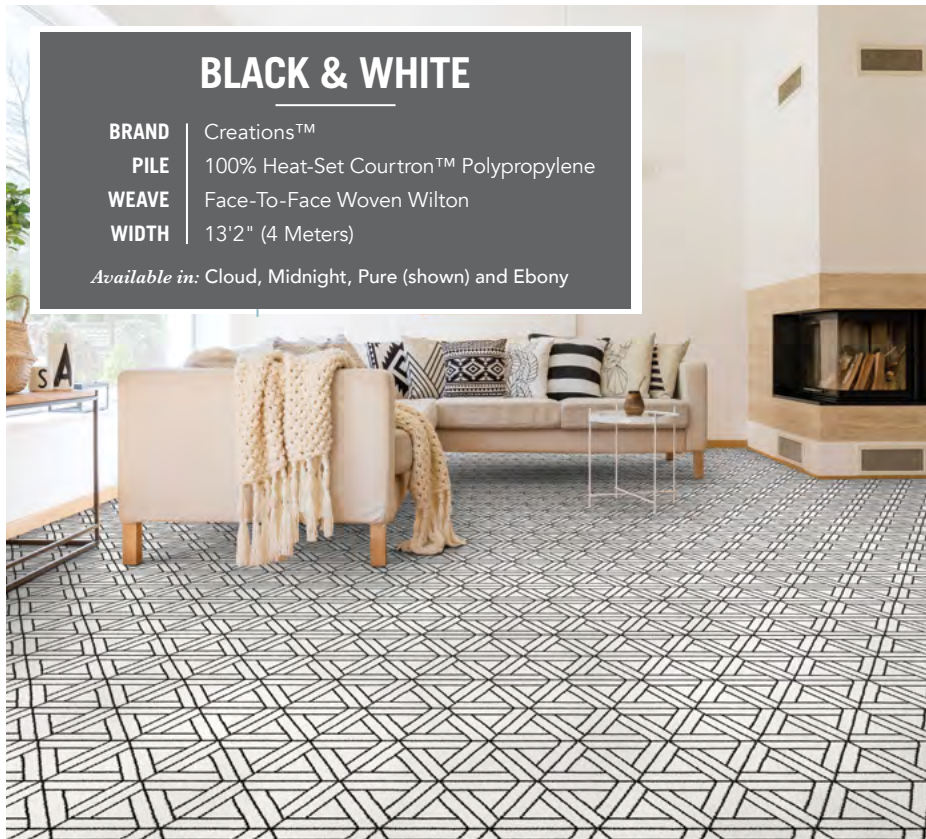




## BLACK & WHITE

**BRAND** Creations™  
**PILE** 100% Heat-Set Courtron™ Polypropylene  
**WEAVE** Face-To-Face Woven Wilton  
**WIDTH** 13'2" (4 Meters)

*Available in:* Cloud, Midnight, Pure (shown) and Ebony



## DOWNTOWN

**BRAND** Creations™  
**PILE** 50% Heat-Set Courtron™ Polypropylene  
50% Shrink Polyester  
**WEAVE** Face-To-Face Woven Wilton  
High/Low Cut-Pile  
**WIDTH** 13'2" (4 Meters)

*Available in:* Pearl, Stone and Denim (shown)



## RIDGE VIEW

*Available in:* Charcoal, Ice, Platinum,  
Sage and Denim

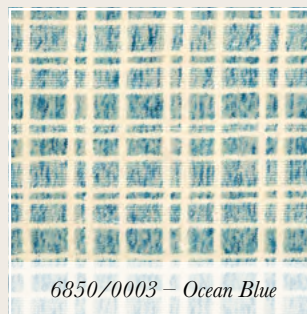
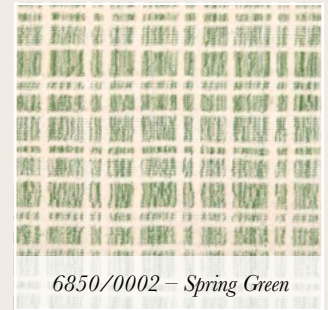
**BRAND** Premiere  
**PILE** 100% Pure Wool  
**CONSTRUCTION** Hand-Tufted Loop Pile  
**WIDTH** 15'





## CROSSWEAVE

**Brand: Premiere, Pile: 100% Pure Wool, Weave: Hand-Loomed Cut and Loop Pile**  
**Width: 15', Available in 4 Colors**



## OCEANSIDE

**Brand: Creations™, Pile: 100% Courtron™ Polypropylene, Weave: Hand-Loomed Flatweave**  
**Width: 16'4" (5 Meters), Available in 4 Colors**

