



COURISTAN®

September–November  
2021

# Courier

## HALLI COLLECTION

100% Space-Dyed Polyester, Cross-Woven on Wilton Looms Allowing For Up to 72 Colors Per Design, 500,000 Points of Yarn Per Square Meter, Modern Classic Designs in a Multitude of Colors, Cotton Backing  
Pile Height: .236", Power-Loomed in Turkey, Available in 6 Area Rugs







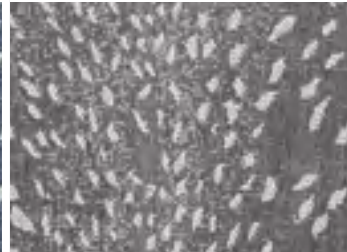
# OUTDOOR/INDOOR BROADLOOM

CREATIONS™ BRAND INTRODUCTIONS

## LEBOMBO LODGE



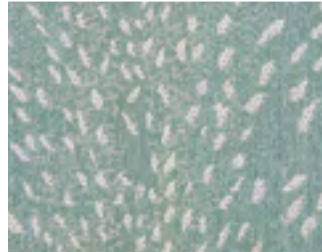
CBLL/0001 Navy



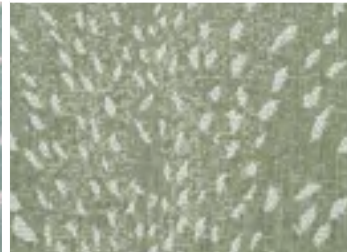
CBLL/0002 Charcoal



CBLL/0004 Platinum



CBLL/0005 Soft Blue



CBLL/0006 Forest

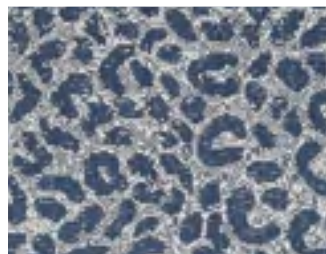


CBLL/0007 Goldenrod

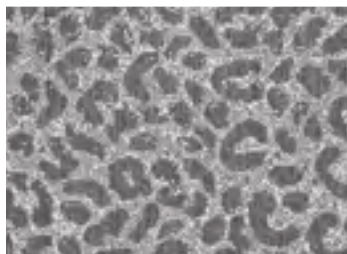
**BRAND:** Creations™, **PILE:** 100% Courtron™ Polypropylene

**WEAVE:** Structured Flatwoven, **WIDTH:** 13'2" (4 Meters)

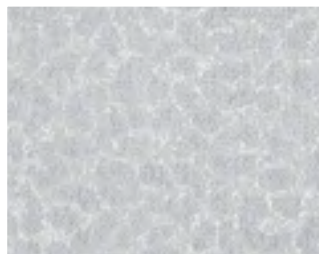
*Available in:* Navy (shown), Charcoal, Platinum,  
Soft Blue, Forest and Goldenrod



CBVP/0001 Navy



CBVP/0002 Charcoal



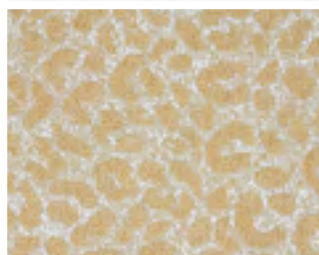
CBVP/0004 Platinum



CBVP/0005 Soft Blue



CBVP/0006 Forest



CBVP/0007 Goldenrod

**BRAND:** Creations™, **PILE:** 100% Courtron™ Polypropylene

**WEAVE:** Structured Flatwoven, **WIDTH:** 13'2" (4 Meters)

*Available in:* Navy, Charcoal (shown), Platinum,  
Soft Blue, Forest and Goldenrod

## VUMBURA PLAINS







# RECIFE COLLECTION

## NEW INTRODUCTIONS

100% Fiber-Enhanced Courtron™ Polypropylene, Featuring a Structured Flatwoven Construction,  
Suitable for Outdoor/Indoor Use, UV Stabilized; Mold/Mildew/Water Resistant, Pet-Friendly  
Pile Height: No Pile Height (Flat Weave) | Power-Loomed in Belgium | **Available in 56 Area Rugs**

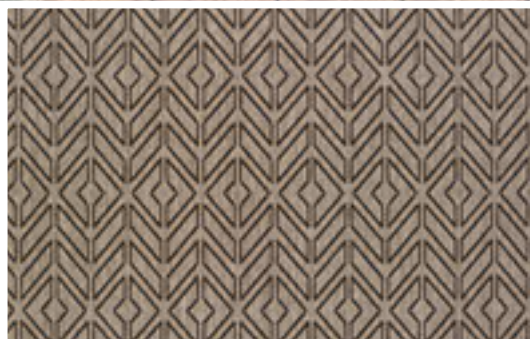
SIZES: 2' x 3'7", 3'9" x 5'5", 5'3" x 7'6", 5'10" x 9'2", 7'6" x 10'9", 8'6" x 13', 2'3" x 7'10" & 2'3" x 11'9" Runners and 7'6" & 8'6" Rounds & Squares



1318/3312 - Cabana Tile/Alloy-Ivory



1318/1222 - Cabana Tile/Regatta-Ivory



1318/2550 - Cabana Tile/Driftwood-Black



1318/4412 - Cabana Tile/Sage Leaf-Ivory



1078/4412 - Antique Medallion/Sage Leaf-Ivory



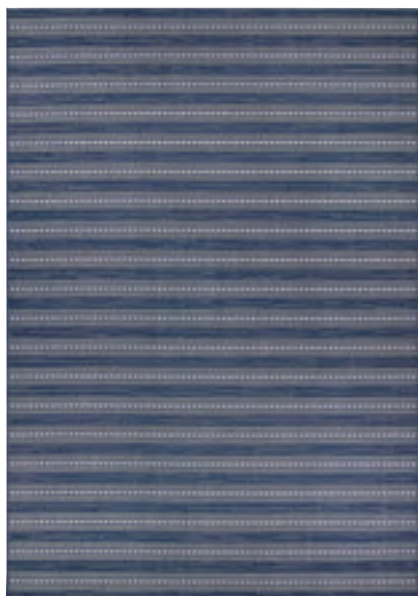
1681/2500 - Wicker Stitch/Cocoa-Black



5313/4412 - Gazebo Stripe/Sage Leaf-Ivory



# NEW AREA RUG INTRODUCTIONS



## AFUERA COLLECTION

100% FIBER-ENHANCED COURTRON™ POLYPROPYLENE  
FEATURING A STRUCTURED FLATWOVEN CONSTRUCTION  
SUITABLE FOR OUTDOOR/INDOOR USE

UV STABILIZED; WATER, MOLD/MILDEW RESISTANT

PILE HEIGHT: NO PILE (FLAT WEAVE) | POWER-LOOMED IN BELGIUM

*Available in 18 Area Rugs*

**SIZES** | 2' x 3'7", 3'11" x 5'7", 5'3" x 7'6", 6'6" x 9'6", 7'10" x 10'9",  
9'2" x 12'5", 2'2" x 7'10" and 2'2" x 11'9" Runners



## BROCATELLE COLLECTION

A UNIQUE BLEND OF 70% HEAT-SET COURTRON™ POLYPROPYLENE  
AND 30% SHRINK POLYESTER, FACE-TO-FACE WILTON WOVEN

FEATURING TRADITIONAL DESIGNS WITH A MODERN TWIST

SOFT COLOR PALETTE OF MODERN MOOD HUES  
PROVIDES AN EYE-CATCHING APPEAL







## SAVOY COLLECTION

85% SHRINK POLYESTER  
AND 15% SPACE-DYED POLYESTER

SOFT, LUXURIOUS FINISH IN EXCESS OF  
650,000 POINTS OF YARN PER SQUARE METER

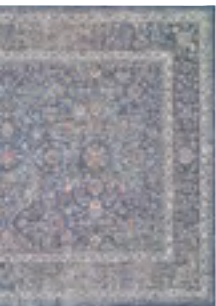
TRADITIONAL, PERSIAN-INSPIRED DESIGNS  
RECOLORED FOR TODAY'S HOUSEHOLDS

PILE HEIGHT: .472"

POWER-LOOMED IN TURKEY

*Available in 5 Area Rugs*

**SIZES** | 5'3" x 7'2", 6'6" x 9'6",  
7'10" x 10'5", 10'5" x 15'8",  
2'7" x 7'2" Runner



PILE HEIGHT: .354"  
POWER-LOOMED IN TURKEY

*Available in 8 Area Rugs*

**SIZES** | 5'3" x 7'6", 7'10" x 10'9", 2'7" x 7'10" Runner

## NIRVANA COLLECTION

A UNIQUE BLEND OF 70% HEAT-SET COURTRON™ POLYPROPYLENE  
AND 30% SHRINK POLYESTER

FACE-TO-FACE WILTON WOVEN

PILE HEIGHT: .275" | POWER-LOOMED IN TURKEY

*Available in 8 Area Rugs*

**SIZES** | 3'3" x 5'3", 5'3" x 7'6", 6'6" x 9', 7'10" x 10'3", 9'10" x 13'2",  
2'7" x 7'10" Runner



## MARBLEHEAD COLLECTION

80% HEAT-SET COURTRON™ POLYPROPYLENE / 20% SHRINK POLYESTER  
EMULATING BEAUTIFUL, YET BOLD MARBLE FLOOR DESIGNS

PILE HEIGHT: .354" | POWER-LOOMED IN TURKEY | *Available in 9 Area Rugs*

**SIZES** | 3'11" x 5'11", 5'3" x 7'6", 7'10" x 10'3",  
*with fringe* 9' x 13', 2'6" x 7'10" Runner





# NEW BROADLOOM INTRODUCTIONS

## CHEYENNE



**BRAND:**  
Premiere

*Available in:*  
Snowcap, Glacier Trail,  
Riverbank (shown),  
Forest Trail and  
Bison Brown



**PILE** | 75% Wool/25% Polyester  
**WEAVE** | Hand-Loomed Loop Pile  
**WIDTH** | 15'

## SAN ONOFRE



**BRAND** | Premiere  
**PILE** | 100% Pure Wool  
**WEAVE** | Hand-Loomed Loop Pile  
**WIDTH** | 15'

*Available in:* Denim, Forest, Granite,  
Silver (shown) and Natural

## NOTE

## RESIDENTIAL BROADLOOM

*These products can be fabricated  
into a Custom Size Rug.*

Finishing options include the following bindings: Chenille, Cotton Fabric, Linen and Courtron™ Polypropylene, 3/8" Synthetic Binding (For Outdoor/Indoor Usage). Programmed Borders, Wool and Synthetic Serging and 2" Length Wool Fringe are also available.

Applied Backing Options Include:  
Outdoor Living, Non-Skid and Felt (*Standard*)

Contact your Couristan Territory Manager today in regard to our Custom Rug Online Calculator, Boards and Program.





## OLDE CHATHAM

<b>BRAND</b>	Creations™
<b>PILE</b>	100% Heat-Set Courtron™ Polypropylene
<b>WEAVE</b>	Face-To-Face Woven Wilton
<b>WIDTH</b>	13'2" (4 Meters)

*Available in:* Navy (shown), Platinum, Charcoal and Sky



## OGEE

<b>BRAND</b>	Premiere
<b>PILE</b>	100% Pure Wool
<b>CONSTRUCTION</b>	Hand-Tufted Loop Pile
<b>WIDTH</b>	15'

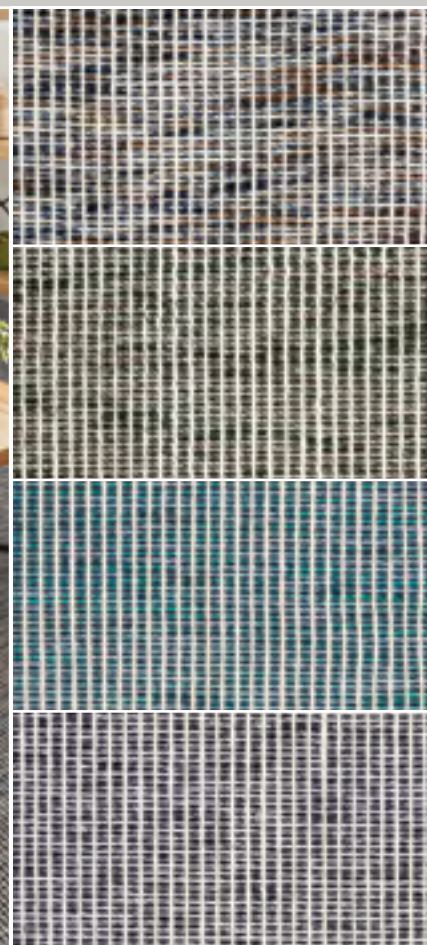
*Available in:* Cornflower, Indigo (shown) and Musk



## TETON

*Available in:* Natural (shown), Stone, Lagoon and Tusk

<b>BRAND</b>	Premiere
<b>PILE</b>	100% Pure Wool
<b>WEAVE</b>	Hand-Loomed Loop Pile
<b>WIDTH</b>	15'





# *Celebrating 95 Years in Business We Thank Our Dalton Distribution Staff*



 **COURISTAN®**

TREND REPORT

COLORADO



SCAN TO WATCH VIDEO

